

# Outre®

NOVEMBER 2021



STYLE & COLOR SHOWN:  
WIG-POP COLORPLAY- LEO\_COSMIC LOVE STAR (LEFT), VIRGO\_COSMIC GALAXY(RIGHT)

Outre®  
85 Oxford Drive,  
Moonachie, NJ 07074  
USA

A COLOR FOR  
EVERY MOOD

# IN THIS ISSUE

Get funky with WIGPOP's Color Play collection. These vibrant multi-tone colored wigs are ready-to-wear and go! Self-expression has never been so easy!

<b>BRAID</b> <b>03</b> Braid Up™ PRE-STRETCHED BRAID 46" 3X PRE-STRETCHED BRAID 56" 3X	<b>BRAID</b> <b>04</b> X-PreStion™ NEW COLORS PRE-STRETCHED BRAID 42" 3X PRE-STRETCHED BRAID 52" 3X PRE-STRETCHED BRAID 72" 3X	<b>BRAID</b> <b>06</b> X-PreStion™ Twisted Up™ BUTTERFLY JUNGLE BOX BRAID 20" BUTTERFLY JUNGLE ROSE BRAID 18" 2X PASSION WATERWAVE 11 14" 3X PASSION BUTTERFLY CURL 26" SUPERLONG 3X	<b>BRAID</b> <b>08</b> X-PreStion™ Twisted Up™ MADE WITH THE BESTSELLING TWISTED UP SPRINGY AFRO TWIST
<b>BRAID</b> <b>10</b> X-PreStion™ Twisted Up™ MADE WITH WATERWAVE FRO TWIST- BUTTERFLY STYLES	<b>BRAID</b> <b>12</b> X-PreStion™ Twisted Up™ BEST OF BOTH WORLDS—MADE WITH THE LEGENDARY PRE-STRETCHED & LONG-LASTING WATERWAVE FRO TWIST	<b>BRAID</b> <b>14</b> X-PreStion™ Twisted Up™ PASSION WATERWAVE—CROCHET STYLES	<b>BRAID</b> <b>16</b> X-PreStion™ Twisted Up™ PASSION WATERWAVE—CURLY STYLES
<b>HH-LACE WIG</b> <b>18</b> My TRESSES™ BLACK LABEL 13" x 4" LACE FRONTAL WIG HH-VIRGIN STRAIGHT 24"	<b>HH-FULL WIG</b> <b>19</b> My TRESSES™ PURPLE LABEL NO KNOT PART WIG HH-ANDORA	<b>HH-LACE WIG</b> <b>20</b> My TRESSES™ GOLD LABEL Lace Front Wig HH-ADAYSHA HH-HAISLEY HH-KENNA HH-SYMPHONY	<b>HH-LACE PART WIG</b> <b>22</b> THE DAILY WIG™ 100% UNPROCESSED HUMAN HAIR LACE PART WIG HH-W&W DEEP CURL 14" HH-W&W NATURAL WAVE 16" HH-W&W NATURAL CURLY 14" HH-W&W NATURAL DEEP 16"
<b>HH-LACE PART WIG</b> <b>24</b> THE DAILY WIG™ 100% UNPROCESSED HUMAN HAIR LACE PART WIG CURLY 16", CURLY 20" HH-DEEP CURL 16" HH-DEEP CURL 20" HH-OCEAN BODY 16" HH-OCEAN BODY 20"	<b>HH-FULL WIG</b> <b>26</b> My TRESSES™ PURPLE LABEL FULL WIG HH-PALMER HH-TRUE HH-ASAMI HH-RASHINA	<b>HH-FULL WIG</b> <b>28</b> Fab & Fly™ 100% UNPROCESSED HUMAN HAIR HH-BLOOM HH-ADHARA HH-TULIA HH-VIVIA	<b>HH-FULL WIG</b> <b>30</b> premium DUBY WIG™ 100% HUMAN HAIR HH-KADENCE HH-ASPEN HH-TERRA HH-SAYRA
<b>HH-HEADBAND WIG</b> <b>32</b> Ourre™ HEADBAND WIG HH-W&W BOHEMIAN CURL 20" HH-KINKY COILY 14"	<b>LACE WIG</b> <b>33</b> PERFECT HAIRLINE™ 13X6_JULIANNE 24" 13X6_MAILYN	<b>LACE WIG</b> <b>34</b> melted HAIRLINE™ LACE FRONT WIG DELUXE WIDE LACE PART_TORIANA	<b>LACE WIG</b> <b>35</b> Lace front™ AZALIA MARION
<b>LACE FRONT WIG</b> <b>36</b> Ourre™ 4"x4" LACE FRONT WIG BOX BRAID BOB 12" MIDDLE PART FEED-IN BOX BRAIDS 36"	<b>LACE BRAID WIG</b> <b>37</b> X-PreStion™ Twisted Up™ LACE FRONT BRAID WIG BOHO PASSION SUMMER TWIST 12" ISLAND SUMMER LOCS 24"	<b>FULL WIG</b> <b>38</b> wigpop™ SYNTHETIC FULL WIG colorplay LEO, VIRGO LIBRA, SCORPIO TAURUS	<b>FULL WIG</b> <b>40</b> wigpop™ SYNTHETIC FULL WIG ANNETTE LEEDA MARILU
<b>CONVERTI-CAP</b> <b>41</b> converti-cap™ WATER WAVES DIVINE JEWELRY	<b>CONVERTI-CAP</b> <b>42</b> converti-cap™ VELVETY SWIRL VIVA LAVIDA SLAYCATION GLITZ & GLAM CURVY ADDICTION	<b>BRAID</b> <b>44</b> X-PreStion™ Twisted Up™ WATERWAVE FRO TWIST 22" 2X	

# Braid Up™

## 100% Kanekalon®

BRAID UP LIKE A PRO

# 3X

- ✓ MADE WITH 100% KANEKALON
- ✓ PROFESSIONAL GRADE HAIR
- ✓ PRE-STRETCHED
- ✓ MORE VOLUME PER PACK
- ✓ ULTRA LIGHTWEIGHT
- ✓ HOT WATER SETTING



AVAILABLE STYLES:  
PRE-STRETCHED BRAID 46" 3X,  
PRE-STRETCHED BRAID 56" 3X  
AVAILABLE COLORS:  
1, 1B, 2, 4, 2T1B/27, 2T1B/30,  
2T1B/350, 2T1B/425

Flame Retardant Fiber



### PRE-STRETCHED BRAID 72" 2X

AVAILABLE COLORS :  
 1, 1B, 2, 4, 613, 2T1B/27, 2T1B/30, 2T1B/350, 2T1B/425,  
 2T1B/613, DRAGON FRUIT, M4/27/30, M4/27/613,  
 M27/30/613

### PRE-STRETCHED BRAID 42" 3X

AVAILABLE COLORS :  
 1, 1B, 2, 4, 27, 30, 33, 350, 425, 51, 60, 613, 613A, 99J,  
 130S, BLUE, BURGUNDY, DRAGON FRUIT, PURPLE,  
 VIOLET, 2T1B/27, 2T1B/2730, 2T1B/27613, 2T1B/30,  
 2T1B/33, 2T1B/350, 2T1B/60, 2T1B/130S, 2T1B/BLUE,  
 2T1B/BURGUNDY, 2T1B/PURPLE, M4/27/30, M4/27/613,  
 M27/613, M27/30/613, M27/30



# X-Pression®

## PRE-STRETCHED

X-Pression offers ultra long braids in platinum blondes, beautiful ombres and more. Get all the new hues in gorgeous long lengths that will make women want to buy multiple packs for their next look.

- Pre-Stretched & Pre-Layered
- Easy to Braid
- Ultra Lightweight
- Hot Water Setting
- Tangle-Free



### NEW COLORS



42", 52", 72"

52"

### PRE-STRETCHED BRAID 52" 3X

AVAILABLE COLORS :  
 1, 1B, 2, 4, 27, 30, 33, 51, 60, 99J, 130S, 350, 425, 613, 613A, BLUE, BLUE RASPBERRY, BRIGHT RED, BURGUNDY, DEEP BLUE,  
 DRAGON FRUIT, GREEN SHAKE, HOT PINK, MOODY SKY BLUE, PARTY PUNCH, PUMPKIN SPICE, PURPLE, PURPLE RAIN, RASTA,  
 2T1B/130S, 2T1B/27, 2T1B/2730, 2T1B/27613, 2T1B/30, 2T1B/33, 2T1B/350, 2T1B/60, 2T1B/BLUE, 2T1B/BURGUNDY, 2T1B/PURPLE,  
 2T1B/ROSE GOLD, 2T1B/SKY BREEZY, 2T1B/SILVER GRAY, 2T1B/SMOKEY LILAC, M4/27/30, M4/27/613, M27/30, M27/613, M27/30/613

# X-pression Twisted Up®

100% PREMIUM SYNTHETIC FIBER

Twists and braids should never be boring. Stock up on the new Jungle and Butterfly Braid crochet looks, and new Passion options that can create countless eye-catching styles.

- Premium Synthetic Fibers
- Quick, Long Lasting Protective Style
- Soft Texture
- Lightweight
- Nonflammable



**18**  
STRANDS

COLOR SHOWN : 2T1B/425



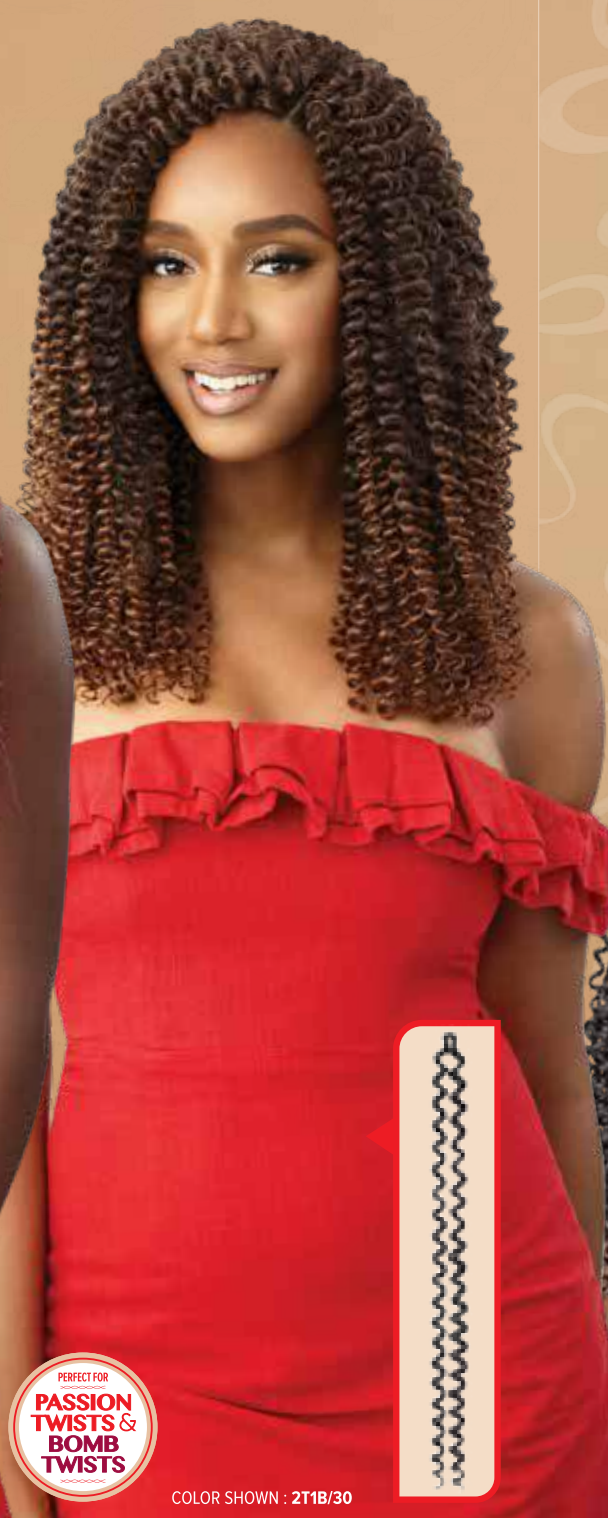
**12**  
STRANDS

COLOR SHOWN : DRAGON FRUIT



PERFECT FOR  
**PASSION  
TWISTS &  
BOMB  
TWISTS**

COLOR SHOWN : 2T1B/30



PERFECT FOR  
**PASSION  
TWISTS &  
BOMB  
TWISTS**

**26"**

COLOR SHOWN : 1B



**BUTTERFLY JUNGLE  
ROSE BRAID 18" 2X**

**BUTTERFLY JUNGLE  
BOX BRAID 20"**

**PASSION  
WATERWAVE II 14" 3X**

**PASSION BUTTERFLY CURL 26"  
SUPER LONG 3X**

**AVAILABLE COLORS**

BUTTERFLY JUNGLE BOX BRAID 20" : 1, 1B, 2, 4, 2T1B/27, 2T1B/30, MACCHIATO, DRAGON FRUIT

BUTTERFLY JUNGLE ROSE BRAID 18" 2X : 1, 1B, 2, 4, 2T1B/27, 2T1B/30, 2T1B/350, 2T1B/425

PASSION WATERWAVE II 14" 3X : 1, 1B, 2, 4, 2T1B/27, 2T1B/30, 2T1B/350, 2T1B/425

PASSION BUTTERFLY CURL 26" SUPER LONG 3X : 1, 1B, 2, 4, 2T1B/27, 2T1B/30, 2T1B/425, 3T1B/3027

**SPECIAL COLORS**



2T1B/27



2T1B/30



2T1B/350



2T1B/425



3T1B/3027



MACCHIATO



DRAGON FRUIT

*DISTRESSED LOOKS PRE-STYLED WITH*  
**BEST-SELLING**  
**SPRINGY AFRO TWIST**

Our Bestselling, long-lasting and Lightweight Springy Afro Twist now comes in Pre-Styled Distressed Locs! Offer something unexpected this Fall with these eclectic crochet styles that are 100% Handcrafted!

X-Pression  
**Twisted Up®**  
**SPRINGY AFRO TWIST**

100% KANEKALON FIBER

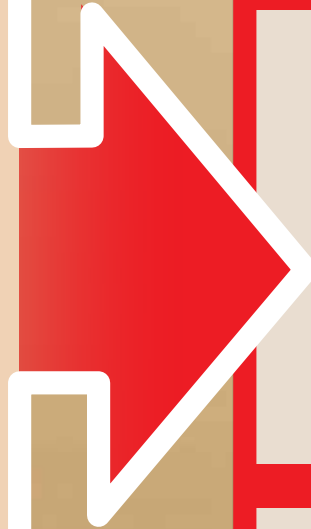














AVAILABLE LENGTHS & COLORS  
 SPRINGY AFRO TWIST 12" 2X : 1, 1B, 2, 4, 27, 30, 2T1B/27, 2T1B/30, 2T1B/350, 2T1B/425  
 SPRINGY AFRO TWIST 16" 3X : 1, 1B, 2, 4, 27, 30, 350, 425, 950, 51, 613, 2T1B/27, 2T1B/30, 2T1B/350, 2T1B/425, 2T1B/BLUE, 2T1B/PURPLE, 2T4/30, 2T99J/350, SUNKISS, SHERBERT, MERMAID, LATTE, HOTPINK, STRIKE, CARNIVAL, CHAMPAGNE AMBER, ORANGE SODA, SNOW BISCUIT  
 SPRINGY AFRO TWIST 24" 3X : 1, 1B, 2, 4, 27, 30, 350, 2T1B/27, 2T1B/30, 2T1B/350, 2T1B/425, 2T1B/BLUE, 2T1B/PURPLE, 2T4/30, 2T99J/350, HOTPINK

PRE-SEPARATED & PRE-FLUFFED



See what the users are saying about these styles!



# BUTTERFLY LOOKS PRE-STYLED WITH THE LONG-LASTING WATERWAVE FRO TWIST

Our lightweight, long-lasting Waterwave Fro Twist now comes in Pre-Styled Butterfly crochet options. It's the trendiest style that's faster and easier than ever to wear.

## X-Pression Twisted Up® WATERWAVE FRO TWIST 22" 2X



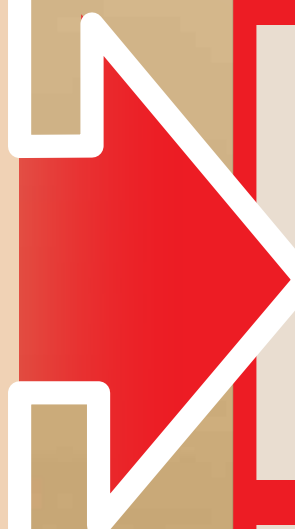
PERFECT FOR PASSION TWISTS & BOMB TWISTS

CROCHET BRAID

LIGHTWEIGHT

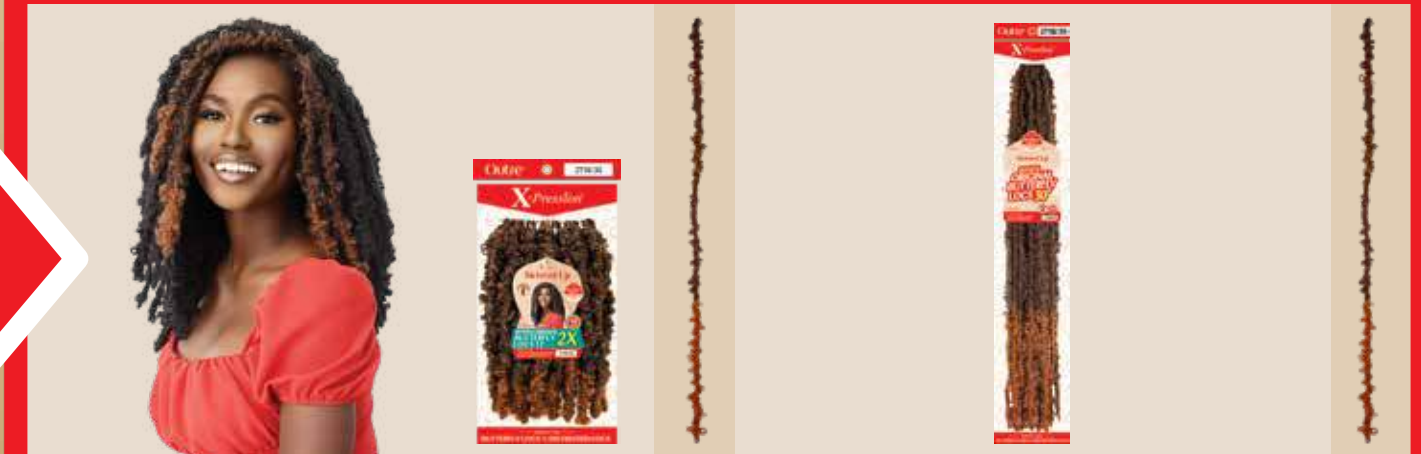
100% Kanekalon®

Flame Retardant Fiber



BUTTERFLY BOMB TWIST 12"

BUTTERFLY BOMB TWIST 18"



BONITA ORIGINAL BUTTERFLY LOCS 12" 2X

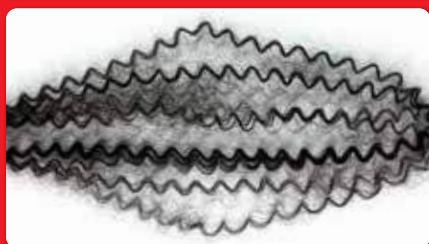
BONITA ORIGINAL BUTTERFLY LOCS 30"



BUTTERFLY PASSION TWIST 18"

BUTTERFLY BOX BRAID 24"

PRE-SEPARATED & PRE-FLUFFED



CREATES BUTTERFLY LOCS & DISTRESSED LOCS



See what the users are saying about these styles!

# JUNGLE LOOKS PRE-STYLED WITH THE LEGENDARY X-PRESSION PRE-STRETCHED & LONG-LASTING WATERWAVE FRO TWIST

Give your customers exactly what they want: fast Jungle styles in braids, twists and locs! These new Pre-Styled crochet selections from X-Pression are the hottest, on-trend Jungle looks for women who are low on time.

## X-Pression® PRE-STRETCHED



## X-Pression Twisted Up® WATERWAVE FRO TWIST 22" 2X



BONITA JUNGLE BOX BRAID 20"



BUTTERFLY JUNGLE ROSE BRAID 18" 2X



BUTTERFLY JUNGLE SENEGAL TWIST 18"



# X-Pression Twisted Up<sup>®</sup>

100% PREMIUM SYNTHETIC FIBER

Add some spice to your aisles with these new Passion Waterwave Pre-Styled Crochet options. These ready-to-wear styles are perfect for the cooler months ahead.

- Made with 100% Premium Synthetic Fiber
- Quick, Long Lasting Protective Style
- Soft Texture
- Lightweight

12 STRANDS

COLOR SHOWN : 2T1B/425



12 STRANDS

COLOR SHOWN : 2T1B/30



12 STRANDS

COLOR SHOWN : 2T1B/350



20 STRANDS

COLOR SHOWN : 2T1B/27



**PRE-TWISTED BOHO PASSION WATERWAVE 24"**

**PRE-TWISTED BOHO KINKY PASSION WATERWAVE 24"**

**PRE-TWISTED PASSION WATERWAVE 20"**

**PASSION WATERWAVE FEED TWIST 18"**

### AVAILABLE COLORS

BOHO PASSION WATERWAVE 24", BOHO KINKY PASSION WATERWAVE 24",  
PRE-TWISTED PASSION WATERWAVE 20" : 1, 1B, 2, 4, 2T1B/27, 2T1B/30, 2T1B/350, 2T1B/425, WHITE BLONDE, PEACH BLONDE  
PASSION WATERWAVE FEED TWIST 18" : 1, 1B, 2, 4, 2T1B/27, 2T1B/30, 2T1B/350, 2T1B/425



See what the users are saying about these styles!

X-Pression Twisted Up<sup>®</sup>  
100% PREMIUM SYNTHETIC FIBER

# PASSION WATERWAVE CROCHET STYLE





PASSION WATERWAVE II 14" 3X



PASSION WATERWAVE II 22"



PASSION BUTTERFLY CURL 20"



PASSION BUTTERFLY CURL 26" SUPER LONG 3X



KINKY PASSION WATERWAVE 24"



PASSION WATERWAVE 24"



PASSION WATERWAVE II 26" SUPER LONG



PASSION WATERWAVE II 26" SUPER LONG 3X

AVAILABLE COLORS :

PASSION WATERWAVE 24" : 1, 1B, 2, 4, 27, 30, 33, 425, 950, 2T1B/27, 2T1B/30, 2T1B/425  
 PASSION WATERWAVE II 14" 3X : 1, 1B, 2, 4, 2T1B/27, 2T1B/30, 2T1B/350, 2T1B/425  
 PASSION WATERWAVE II 22", KINKY PASSION WATERWAVE 24" : 1, 1B, 2, 4, 27, 30, 950,  
 CHAMPAGNE BLONDE, WHITE BLONDE, PEACH BLONDE, OM27, OM30, OM350, OM425  
 PASSION WATERWAVE II 26" SUPER LONG, PASSION WATERWAVE II 26" SUPER LONG 3X,  
 PASSION BUTTERFLY CURL 20", PASSION BUTTERFLY CURL 26" SUPER LONG 3X :  
 1, 1B, 2, 4, 2T1B/27, 2T1B/30, 2T1B/425, 3T1B/3027



See what the users are saying about these styles!

This new, versatile Passion Waterwave and Butterfly Curl lineup can be used to create any look your shoppers want. Whether their next style is a distressed loc hairdo, butterfly loc look, or hip-length twists, they'll find the perfect hair to create it.

- Made with 100% Premium Synthetic Fiber
- Creates the trendy passion twists style
- Soft Texture
- Variety of Colors

X-Pression  
**Twisted Up**<sup>®</sup>  
 100% PREMIUM SYNTHETIC FIBER

**PASSION WATERWAVE**  
**CURLY STYLE**

**My**  
**TRESSES**

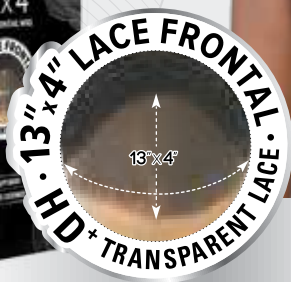
PREMIUM 100% UNPROCESSED HUMAN HAIR

BLACK LABEL

**13" X 4"**  
LACE FRONTAL WIG

Introducing premium hair with true versatility. MyTresses® Black Label Lace Frontal Wig has ample lace area to allow the wearer to part how they please, and the 10+ quality grade hair that can be customized to achieve the color they want. It's their tresses, their way.

- 100% Premium Unprocessed Human Hair
- Hand-Tied 13" x 4" Lace Frontal
- HD+ Transparent Lace
- Bleach/Dye/Customize
- 3 Pre-Attached Comb for a Secure Fit



COLOR SHOWN : NATURAL BROWN

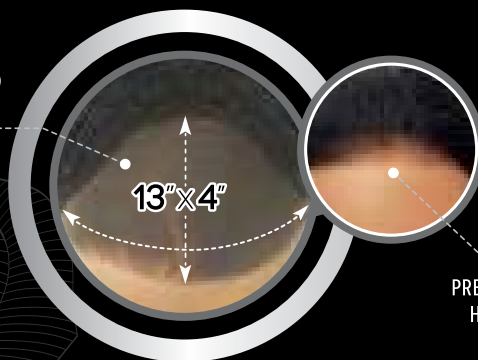


**HH-VIRGIN STRAIGHT 24"**

**10+ QUALITY GRADE**  
**BLEACH / DYE / CUSTOMIZE**

AVAILABLE COLORS : NATURAL BLACK, NATURAL BROWN

13"X4" HAND-TIED LACE FRONTAL



PRE-PLUCKED HAIRLINE



COLOR SHOWN : NATURAL BROWN



**HH-ANDORA**

AVAILABLE COLORS : NATURAL BLACK, NATURAL BROWN

- 100% Unprocessed Human Hair
- No Knot Parting
- Lays Flat
- Real Scalp Appearance
- Bleach, Color & Customize
- Soft, Natural Luster
- Easy to Style & Maintain

**My**  
**TRESSES**

100% UNPROCESSED HUMAN HAIR

PURPLE LABEL

**NO KNOT PART WIG**

BLEACH / DYE / CUSTOMIZE

Finally a realistic finished look can be achieved in no time! MyTresses® Purple Label is an easy-to-wear wig that features a special material that looks like real scalp. There's no need to hide any knots, so skip the tinting, and other fussiness.

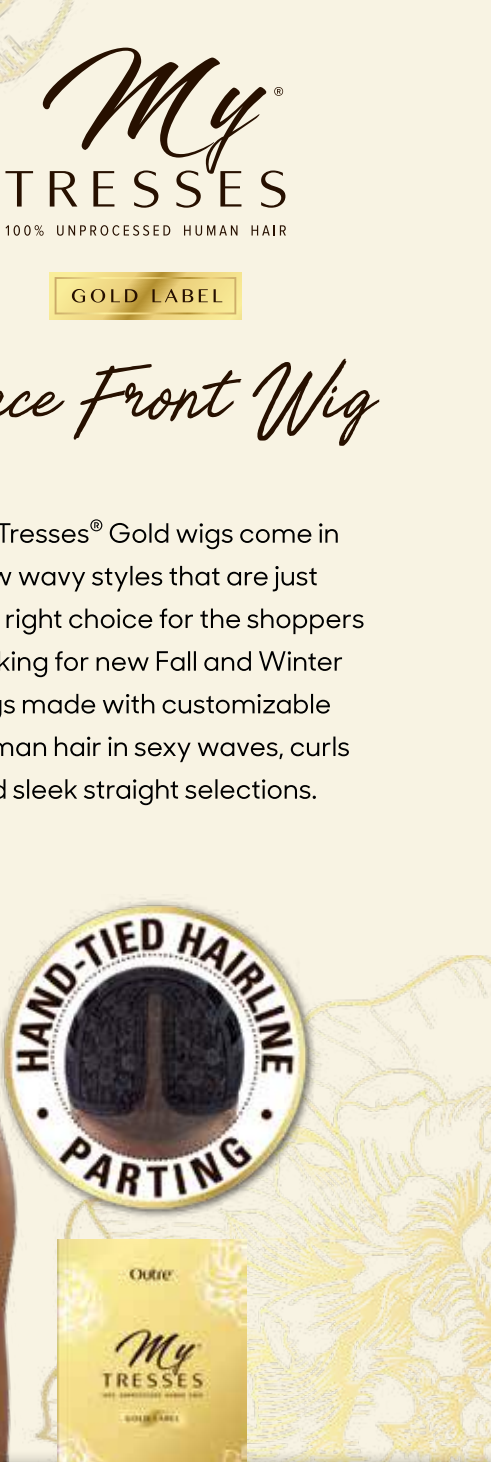


My  
TRESSES  
100% UNPROCESSED HUMAN HAIR

GOLD LABEL

# Lace Front Wig

MyTresses® Gold wigs come in new wavy styles that are just the right choice for the shoppers looking for new Fall and Winter wigs made with customizable human hair in sexy waves, curls and sleek straight selections.



COLOR SHOWN : NATURAL BROWN

COLOR SHOWN : NATURAL BROWN

COLOR SHOWN : NATURAL BROWN

COLOR SHOWN : NATURAL BROWN



HH-ADAYSHA LENGTH 18"

HH-HAISLEY LENGTH 24"

HH-KENNA LENGTH 24"

HH-SYMPHONY LENGTH 16"

## 9+ QUALITY GRADE BUNDLE HAIR

## BLEACH / DYE / CUSTOMIZE

- 100% Unprocessed Human Hair
- Bleach / Dye / Customize
- 9+ Quality Grade
- Fuller Density
- Natural Luster
- Long-Lasting Bundle Hair

AVAILABLE COLORS :  
NATURAL BLACK, NATURAL BROWN



100% UNPROCESSED HUMAN HAIR LACE PART WIG

The easiest wig to wear has been paired with the prettiest Wet & Wavy Styles. These everyday-friendly styles are made with 100% Human Hair on a cap designed to wear in a snap.



HH-W&W NATURAL DEEP 16"

HH-W&W NATURAL WAVE 16"

HH-W&W DEEP CURL 14"

HH-W&W NATURAL CURLY 14"



AVAILABLE COLORS : NATURAL BLACK, NATURAL BROWN



- 100% Unprocessed Human Hair
- Bleach & Dye Friendly
- Voluminous & Full
- Hand-Tied Deep Lace Part
- Breathable Mesh Cap
- Elastic Band for Secure Fit



100% UNPROCESSED HUMAN HAIR LACE PART WIG

Curls and waves are not just for special occasions. With The Daily Wig you can look stylish 7 days a week. This pop-on-and-go construction makes looking polished as simple as 1-2-3.



COLOR SHOWN : NATURAL BLACK

COLOR SHOWN : NATURAL BLACK

COLOR SHOWN : NATURAL BROWN

COLOR SHOWN : NATURAL BROWN

COLOR SHOWN : NATURAL BROWN

COLOR SHOWN : NATURAL BROWN

HH-OCEAN BODY 16"

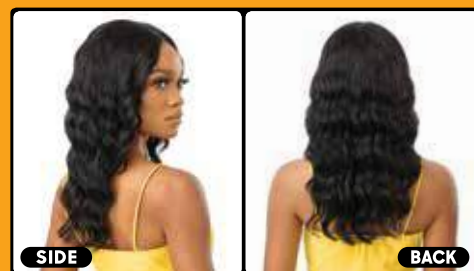
HH-OCEAN BODY 20"

CURLY 16"

CURLY 20"

HH-DEEP CURL 16"

HH-DEEP CURL 20"



AVAILABLE COLORS : NATURAL BLACK, NATURAL BROWN

- 100% Unprocessed Human Hair
- Hand-Tied Deep Lace Part
- Bleach & Dye Friendly
- Breathable Mesh Cap
- Voluminous & Full
- Elastic Band for Secure Fit



COLOR SHOWN : NATURAL BROWN



COLOR SHOWN : NATURAL BROWN



COLOR SHOWN : NATURAL BROWN



COLOR SHOWN : NATURAL BROWN

# My<sup>®</sup> TRESSES

100% UNPROCESSED HUMAN HAIR

PURPLE LABEL

FULL WIG

BLEACH / DYE / CUSTOMIZE

MyTresses<sup>®</sup> Purple Label wigs are made with 100% Unprocessed Human Hair designed to bleach, dye, and customize effortlessly. These newest short styles are easy to wear, ready to customize and absolutely gorgeous.

## HH - TRUE

## HH - PALMER

## HH - ASAMI

## HH - RASHINA



- 100% Unprocessed Human Hair
- Bleach, Color & Customize
- Soft, Natural Luster
- Easy to Style & Maintain



AVAILABLE COLORS : NATURAL BLACK, NATURAL BROWN

*Fab & Fly*<sup>TM</sup>  
100% UNPROCESSED HUMAN HAIR



Your customers have never settled for anything less than fabulous, and won't start now! Fab & Fly is available in 4 new chic curly and wavy styles for the mature woman that never compromises.

- 100% Unprocessed Human Hair
- Breathable Mesh Cap
- Comfortable & Secure Fit
- Voluminous & Full
- Easy-to-Wear & Style
- Bleach & Dye Friendly



# HH-BLOOM

# HH-ADHARA

# HH-TULIA

# HH-VIVIA



AVAILABLE COLORS : NATURAL BLACK, NATURAL BROWN

Bleach  Dye  Customize



PRE-BUMPED

COLOR SHOWN :  
DBH 4/HONEY (TOP),  
DBH 1B/COPPER (BOTTOM)



HH-ASPEN



Wavy Bob Style

COLOR SHOWN :  
DR613 (TOP),  
DR DEEP VIOLET (BOTTOM)



HH-KADENCE



PRE-BUMPED

COLOR SHOWN :  
DBH 1B/AMBER (TOP),  
DBH 1B/BURGUNDY (BOTTOM)



HH-TERRA



CLIPPER CUT

COLOR SHOWN :  
DBH 4/HONEY (TOP),  
DR VIVID BURGUNDY (BOTTOM)



HH-SAYRA

# premium DUBY® WIG

100% HUMAN HAIR

Wig season is here, and DUBY has the sassy styles your shoppers are seeking this Fall. Made with 100% Premium Human Hair, these wigs feature a variety of classic styles and color options.

- 100% Premium Human Hair
- A Variety of Classic Styles & Color Options
- Affordable
- Durable and Long Lasting



AVAILABLE COLORS :

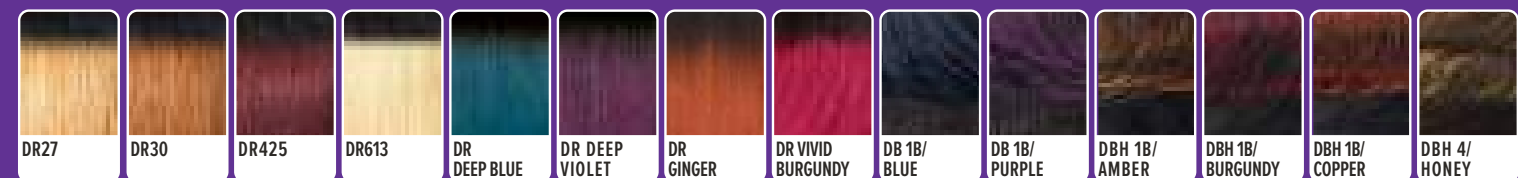
HH-ASPEN : 1, 1B, 2, 27, 30, 613, 950, DB 1B/BLUE, DB 1B/PURPLE, DBH 1B/AMBER, DBH 1B/BURGUNDY, DBH 1B/COPPER, DBH 4/HONEY

HH-KADENCE : 1, 1B, 2, S1B/30, S4/30, DR27, DR30, DR425, DR613, DR DEEP BLUE, DR DEEP VIOLET

HH-TERRA : 1, 1B, 2, 27, 30, 613, 950, DB 1B/BLUE, DB 1B/PURPLE, DBH 1B/AMBER, DBH 1B/BURGUNDY, DBH 1B/COPPER, DBH 4/HONEY

HH-SAYRA : 1, 1B, 2, 27, 30, 613, 950, DR GINGER, DR VIVID BURGUNDY, DB 1B/BLUE, DB 1B/PURPLE, DBH 4/HONEY

SPECIAL COLORS





# Outre® HEADBAND WIG

100% UNPROCESSED HUMAN HAIR

Outre's Headband Wigs are the pop-on-and-go styling superhero! These curly style wigs include an adjustable, satin-like, pre-attached Headband for a fast, snug fit, and are made with 100% unprocessed human hair for a realistic look.



COLOR SHOWN : NATURAL BLACK



**HH-KINKY COILY 14"**

AFTER WET

STRAIGHT STYLE

COLOR SHOWN : NATURAL BROWN



**HH-W&W BOHEMIAN CURL 20"**



**9+ QUALITY GRADE**  
BLEACH / DYE / CUSTOMIZE

AVAILABLE COLORS : NATURAL BLACK, NATURAL BROWN

- 100% Unprocessed Human Hair
- Bleach / Dye / Customize
- Pre-Attached Headband
- Soft, Satin-Like Headband Material
- Easy & Fast Styling, No Glue Needed
- Reveal or Conceal Your Natural Hairline
- Great for Wig Beginners



# PERFECT HAIRLINE™

FULLY HAND-TIED 13"X6" LACE WIG

Featuring a fully hand-tied 13" x 6" frontal with a pre-plucked finish, Perfect Hairline provides a picture perfect hairline paired with our newest styles - Julianne 24" and Mailyn.

- Fully Hand-Tied 13" x 6" Lace Area
- Ear-to-Ear Soft Lace HD Transparent Lace
- Natural Baby Hairs
- Comes with Pre-Attached Elastic Band
- Pre-Plucked Hairline
- Heat Styling Friendly



COLOR SHOWN :  
DR JAVA FROST (MAIN)  
3DRFF CAJUN SPICE, DR2/GOLDEN AMBER  
(BOTTOM LEFT TO RIGHT)



**MAILYN 13" X 6"**

COLOR SHOWN :  
DR4 HONEY BROWN (MAIN)  
2 (BOTTOM LEFT TO RIGHT)

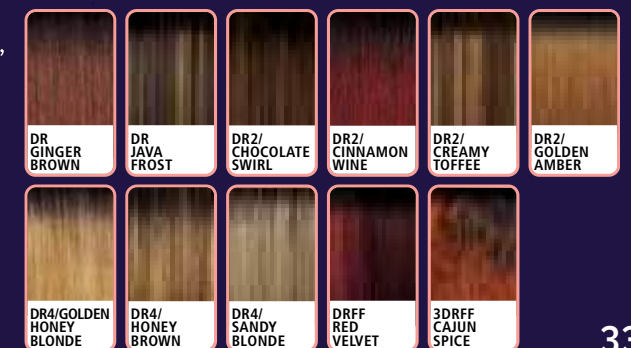


**JULIANNE 24" 13" X 6"**

AVAILABLE COLORS :

**JULIANNE 24"** : 1, 1B, 2, 613, DR GINGER BROWN, DR2/CHOCOLATE SWIRL, DR4/GOLDEN HONEY BLONDE, DR4/HONEY BROWN, DRFF RED VELVET  
**MAILYN** : 1, 1B, 2, 613, DR JAVA FROST, DR2/CINNAMON WINE, DR2/CREAMY TOFFEE, DR2/GOLDEN AMBER, DR4/SANDY BLONDE, 3DRFF CAJUN SPICE

SPECIAL COLORS



# melted HAIRLINE®

LACE FRONT WIG

Outre's cult favorite wig collection, Melted Hairline, is back with a new style that's going to be flying off the shelves. Meet Toriana! She has an unbelievably real hairline and is available in a range of gorgeous, rich colors.

- Soft HD Transparent Lace
- Deluxe Wide Lace Part
- Pre-Plucked Hairline & Sideburns
- Pre-Attached Wide Elastic Band for a Secure Fit
- Redesigned ComfortFit Ear Contour
- Salon-Inspired Colors
- Natural Baby Hairs



COLOR SHOWN :  
DRFF2/SUNKISS HONEY (MAIN)  
DR BROWN SUGAR SWIRL,  
DR4/GOLDEN HONEY  
(BOTTOM LEFT TO RIGHT)



**TORIANA**



AVAILABLE COLORS :

1, 1B, 2, 613, DR BROWN SUGAR SWIRL,  
DR4/GOLDEN HONEY, DRFF2/CHERRY RED,  
DRFF2/CINNAMON MOCHA, DRFF2/SUNKISS HONEY

SPECIAL COLORS



DR BROWN SUGAR SWIRL

DR4/ GOLDEN HONEY

DRFF2/ CHERRY RED

DRFF2/ CINNAMON MOCHA

DRFF2/ SUNKISS HONEY



COLOR SHOWN :  
DR CHOCOLATE SWIRL (TOP)  
DR4/HONEY GINGER (BOTTOM)



**AZALIA** 28"



COLOR SHOWN :  
DRFF GOLDEN AMBER (TOP)  
1B (BOTTOM)



**MARION**



AVAILABLE COLORS :

**AZALIA** : 1, 1B, 2, 613, DR CHOCOLATE SWIRL, DR4/FAIRLY BLONDE,  
DR4/HONEY GINGER, DRFF BLACK CHERRY, DRFF HONEY BROWN,  
DRFF SUNKISS BROWN, DRFF2/CINNAMON SPICE  
**MARION** : 1, 1B, 2, 613, DR CHOCOLATE SWIRL, DR2/BUTTERED PECAN,  
DR2/GINGER BROWN, DR4/GOLDEN HONEY BLONDE,  
DRFF GOLDEN AMBER, DRFF RED VELVET

# Lace front™

LACE FRONT WIG

Azalia and Marion are Outre's newest Lace Front wigs designed to be on-trend and natural-looking. These super long and Wet & Wavy styled beauties are perfect for Fall and Winter and come in a range of warm, beautiful colors.

- HD Transparent Lace
- Breathable, Comfortable Cap
- Natural Baby Hair
- Premium Synthetic Fibers



SPECIAL COLORS



DR CHOCOLATE SWIRL

DR2/ BUTTERED PECAN

DR2/ GINGER BROWN

DR4/ FAIRLY BLONDE

DR4/GOLDEN HONEY BLONDE

DR4/ HONEY GINGER

DRFF BLACK CHERRY

DRFF GOLDEN AMBER

DRFF HONEY BROWN

DRFF RED VELVET

DRFF SUNKISS BROWN

DRFF2/ CINNAMON SPICE

# Outre®

## 4" x 4" LACE FRONT WIG

Outre's Pre-Braided 4"x4" Lace Front Wigs are your braid fantasies come to life. Get the professional braided look you love without an all-day salon visit, the price tag, or being stuck with one style! Pop the wig on and off whenever and part it any way.



COLOR SHOWN : 1B



### BOX BRAID BOB 12"

COLOR SHOWN : 1B



### MIDDLE PART FEED-IN BOX BRAIDS 36"

AVAILABLE COLORS :

MIDDLE PART FEED-IN BOX BRIDS 36" : 1, 1B, 2, DR BURGUNDY, DR1B/2T3027, DR4/2T27613  
 BOX BRAID BOB 12" : 1, 1B, 2, DR1B/2T425, DR1B/2T3027, DR4/2T27613

- 4"x4" Ear-to-Ear Lace Area
- Hand-Tied HD Lace
- Lightweight & Natural Density
- Soft, Flexible Braids
- Baby Hair Included
- Pre-Attached Elastic Band For a Flat Finish

SPECIAL COLORS



# X-Pression Twisted Up®

100% PREMIUM SYNTHETIC FIBER

## LACE FRONT BRAID WIG

Your customers can skip the trip to the braiding salon with these new pre-styled units. Give your shoppers fast, affordable alternatives to pricey salon services with these ready-to-wear wigs.



COLOR SHOWN : 1B (TOP), 2T4/2730 (BOTTOM)



### ISLAND SUMMER LOCS 24"

COLOR SHOWN : 1B (TOP), 2T1B/30 (BOTTOM)



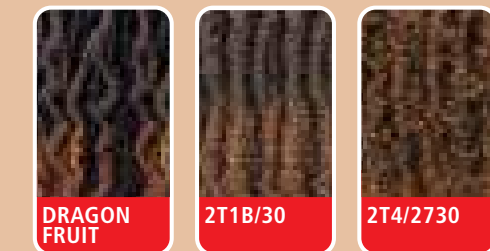
### BOHO PASSION SUMMER TWIST 12"

KEY FEATURES & AVAILABLE COLORS :

- ISLAND SUMMER LOCS 24" :**  
 1, 1B, 2, 613, DRAGON FRUIT, 2T1B/30, 2T4/2730
- 100% Premium Synthetic Fiber
  - 4x4 Hand-Tied Lace Front
  - Pre-Plucked Ear-to-Ear HD Lace
  - Natural Baby Hair

- BOHO PASSION SUMMER TWIST 12" :**  
 1, 1B, 2, DRAGON FRUIT, 2T1B/30
- 100% Premium Synthetic Fiber
  - Pre-Plucked Ear-to-Ear HD Lace
  - Natural Baby Hair

SPECIAL COLORS



wigpop™

SYNTHETIC FULL WIG

colorplay

Get funky with WIGPOP's Color Play collection. These vibrant multi-tone colored wigs are ready-to-wear and go! Self-expression has never been so easy!



COLOR SHOWN:  
COSMIC RAINBOW (TOP),  
COSMIC LOVE STAR (BOTTOM)

COLOR SHOWN:  
COSMIC GALAXY (TOP),  
COSMIC UNICORN (BOTTOM)

COLOR SHOWN:  
COSMIC RAINBOW (TOP),  
COSMIC RED COMET (BOTTOM)

COLOR SHOWN:  
COSMIC LOVE STAR (TOP),  
COSMIC UNICORN (BOTTOM)

COLOR SHOWN:  
COSMIC RED COMET (TOP),  
COSMIC GALAXY (BOTTOM)



LIBRA

SCORPIO

TAURUS

LEO

VIRGO

AVAILABLE COLORS

**LIBRA**  
1, 1B, 2, 613, COSMIC GALAXY, COSMIC LOVE STAR,  
COSMIC RAINBOW, COSMIC UNICORN

**LEO**  
1, 1B, 2, 613, COSMIC GALAXY, COSMIC LOVE STAR,  
COSMIC RAINBOW, COSMIC UNICORN

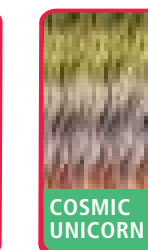
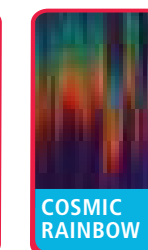
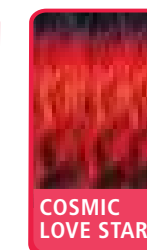
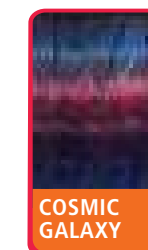
**SCORPIO**  
1, 1B, 2, 613, COSMIC GALAXY, COSMIC LOVE STAR,  
COSMIC RAINBOW, COSMIC UNICORN

**VIRGO**  
1, 1B, 2, 613, COSMIC GALAXY, COSMIC RAINBOW,  
COSMIC RED COMET, COSMIC UNICORN

**TAURUS**  
1, 1B, 2, 613, COSMIC GALAXY, COSMIC RAINBOW,  
COSMIC RED COMET, COSMIC UNICORN

- Custom Designed Multi-Tone Colors
- Ready to Wear & Go
- 100% Synthetic Fibers
- Heat-Styling Friendly

SPECIAL COLORS



# wigpop™

## SYNTHETIC FULL WIG

WIGPOP is back with more new styles in more trendy colors. Find your perfect wig to fit your mood, and then switch it up for another with these ready-to-wear and go wigs that are made with quality synthetic fibers and the best value.



COLOR SHOWN : TIRAMISU

COLOR SHOWN : GINGER SWIRL

COLOR SHOWN : DR2/GOLDEN AMBER



### ANNETTE

### LEEDA

### MARILU

#### SPECIAL COLORS



#### AVAILABLE COLORS

**ANNETTE**  
1, 1B, 2, 613, GINGER BROWN, MAPLE BROWN, RED VELVET, TIRAMISU, DR CHOCOLATE SWIRL, DR COPPER ORANGE, DR HONEY AUBURN

**LEEDA**  
1, 1B, 2, 613, CARAMEL, GINGER SWIRL, MACCHIATO, MAPLE BROWN, DR HONEY AUBURN, DR2/CINNAMON WINE, DR4/GOLDEN HONEY BLONDE,

**MARILU**  
1, 1B, 2, 613, CHOCOLATE SWIRL, GINGER BROWN, DR COPPER ORANGE, DR2/CINNAMON WINE, DR2/GOLDEN AMBER, DR4/GOLDEN HONEY BLONDE

# converti-cap™

PREMIUM SYNTHETIC FIBER



Styles are truly limitless with Outre's Converti-Cap wigs. Wear these wavy wigs up, down, pulled back, or with a cute scarf. There are so many looks to try. Wear them all this Fall!

- Limitless styling possibilities
- Reveal your own hairline for a realistic look
- Breathable and flexible cap that lays flat
- Adjustable drawstring for a custom fit
- Premium Synthetic Fibers
- Bacteria-Resistant Net



COLOR SHOWN : 1B (TOP), DR2/GINGER BROWN (BOTTOM)

COLOR SHOWN : CHOCOLATE FROST (TOP), HT MIDNIGHT GRAY, 1B (BOTTOM LEFT TO RIGHT)



### WATER WAVES

### DIVINE JEWELRY

#### SPECIAL COLORS



#### AVAILABLE COLORS

**DIVINE JEWELRY**  
1, 1B, 2, CHOCOLATE FROST, DR BLACK CHERRY, DR2/CINNAMON SPICE, DR2/GOLDEN HONEY BLONDE, DR2/HAZELNUT, DR2/HONEY BROWN, DX POLAR GRAY, DX MISTY SMOKE GRAY, HT MIDNIGHT GRAY

**WATER WAVES**  
1, 1B, 2, DR CHOCOLATE SWIRL, DR JAVA FROST, DR RED VELVET, DR2/CREAMY TOFFEE, DR2/GINGER BROWN, DR2/GOLDEN AMBER, DR2/GOLDEN HONEY BLONDE



COLOR SHOWN : DR2/CREAMY TOFFEE (TOP),  
DX MISTY GRAY, 1B (BOTTOM LEFT TO RIGHT)



COLOR SHOWN : DR2/CINNAMON WINE (TOP),  
DR2/27613 (BOTTOM)



COLOR SHOWN : DR2/GINGER BROWN (TOP),  
1B, DR2/GINGER BROWN (BOTTOM LEFT TO RIGHT)



COLOR SHOWN : 1B (TOP),  
1B, DR2/GINGER BROWN (BOTTOM LEFT TO RIGHT)



COLOR SHOWN : 1B (TOP),  
1B, DR2/CINNAMON SPICE (BOTTOM LEFT TO RIGHT)

# converti-cap™

PREMIUM SYNTHETIC FIBER



Styles are truly limitless with Outre's Converti-Cap wigs. Wear it up, down, flipped to one side, pulled back, with a cute scarf, or all fluffed out! These styles range in textures, lengths, and are available in so many different colors. 1 Wig, 1 Million Ways!

- *Reveal your own hairline for a realistic look*
- *Breathable And Flexible Cap That Lays Flat*
- *Adjustable Drawstring For A Custom Fit*
- *Premium Synthetic Fibers*
- *Bacteria-Resistant Net*



## VELVET SWIRLS

## VIVA LAVIDA

## SLAYCATION

## GLITZ & GLAM

## CURVY ADDICTION

### AVAILABLE COLORS

#### VELVETY SWIRLS :

1, 1B, 2, TWILIGHT GRAY,  
DX MISTY GRAY, ST BROWN GRAY,  
DR CHOCOLATE SWIRL,  
DR COPPER ORANGE,  
DR RED VELVET,  
DR2/CREAMY TOFFEE,  
DR2/GINGER BROWN,  
DR2/GOLDEN AMBER,  
DR2/GOLDEN HONEY BLONDE

#### VIVA LAVIDA :

1, 1B, 2, DR2/27613,  
DR CHOCOLATE SWIRL,  
DR RED VELVET,  
DR2/CINNAMON WINE,  
DR2/GINGER BROWN,  
DR2/GOLDEN AMBER

#### SLAYCATION :

1, 1B, 2, 4, 2T1/30, S1B/30,  
DR RED VELVET,  
DR2/GINGER BROWN,  
DR2/HONEY BROWN,  
DR4/GOLDEN HONEY BLONDE

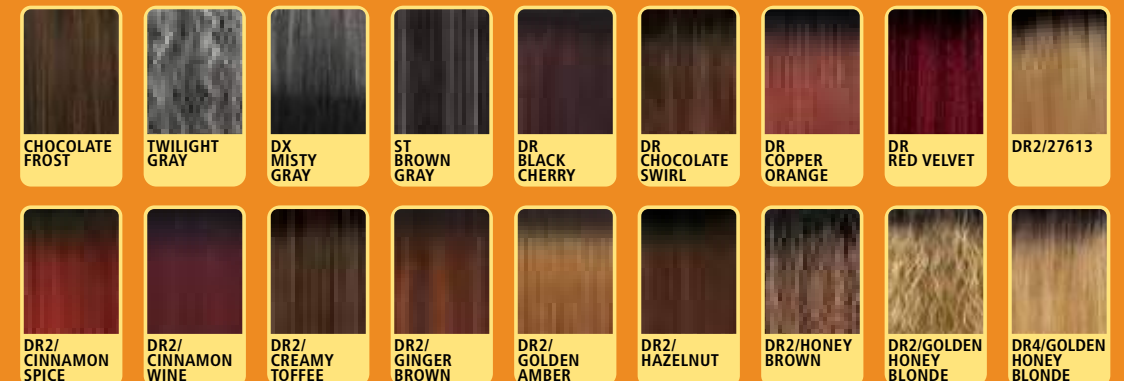
#### GLITZ & GLAM :

1, 1B, 2, DR2/27613,  
DR CHOCOLATE SWIRL,  
DR RED VELVET,  
DR2/CINNAMON WINE,  
DR2/GINGER BROWN,  
DR2/GOLDEN AMBER

#### CURVY ADDICTION :

1, 1B, 2, CHOCOLATE FROST,  
DR BLACK CHERRY,  
DR2/27613,  
DR2/CINNAMON SPICE,  
DR2/HAZELNUT,  
DR2/HONEY BROWN

### SPECIAL COLORS



X-Pression

Twisted Up®

# WATERWAVE FRO TWIST 22" 2X

Consumers Rave,  
"THE BEST WATERWAVE OF 2021"



“Soft On Skin & Ultra Lightweight”

1

THE SAFEST BRAIDING HAIR

2

THE MOST CONVENIENT  
BRAIDING HAIR

“100% Kanekalon Fiber  
Pre-Separated into 3 Pieces”



3

THE BEST VALUE  
BRAIDING HAIR

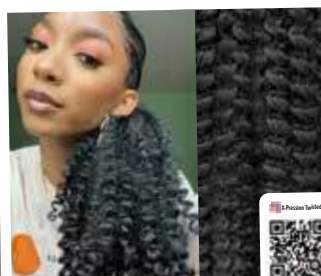
“Tangle-Free for Easy Installation &  
Pre-Fluffed for Faster Installation”



4

THE MOST  
NATURAL LOOKING  
BRAIDING HAIR

“Human Hair Like Sheen made with  
100% Kanekalon”



5

THE MOST STYLISH  
BRAIDING HAIR

“Finished Styles Do Not Unravel  
and Look Polished”



Outre®

BEAUTIFUL HAIR FOR ALL

OUTRE.COM

Copyright © 2021 Sun Beauty Co., Ltd. All rights reserved.

