

Outre®

DECEMBER 2021

THE MOST WONDERFUL TIME OF THE YEAR



STYLE & COLOR SHOWN: SPRINGY AFRO TWIST 16" 3X + BRAID UP PRE-STRETCHED / 1B

Outre®
85 Oxford Drive,
Moonachie, NJ 07074
USA



IN THIS ISSUE

Nothing beats the #1 best-selling Springy Afro Twist! It's the top pick for professional braiders that prefer hair that blends beautifully for the popular Mix & Match styling, and can create flawless finished styles easily. It's made from superior 100% Kanekalon fiber that looks more natural than anything else on the market, and is known for its lightweight, comfortable wear.

BRAID 03 SPRINGY AFRO TWIST 24" 3X <i>NEW COLORS</i>	BRAID 04 BUTTERFLY JUNGLE BOX BRAID 12" 2X BUTTERFLY JUNGLE BOX BRAID 20" BUTTERFLY JUNGLE ROSE BRAID 18" 2X BUTTERFLY JUNGLE SENEGAL TWIST 12" 2X BUTTERFLY JUNGLE SENEGAL TWIST 18" BUTTERFLY JUNGLE ISLAND SUMMER LOCS 18"	BRAID 06 BONITA BOHO CRUSH LOCS 12" BONITA BOHO CRUSH LOCS 20" PASSION BOHO WATER CURL 20"	HH-BUNDLE & CLOSURE 08 NATURAL STRAIGHT 10"-26" 13"x4" HD LACE CLOSURE 12" 13"x4" HD LACE CLOSURE 14" 4"x4" HD LACE CLOSURE 12" 4"x4" HD LACE CLOSURE 16"
HH-LACE WIG 09 HH-VIRGIN STRAIGHT 24"	HH-LACE WIG 10 HH-ADAYSHA HH-HAISLEY HH-KENNA	HH-LACE PART WIG 12 THE DAILY WIG 100% UNPROCESSED HUMAN HAIR LACE PART WIG	HH-FULL WIG 14 HH-RASHINA
HH-FULL WIG 15 HH-SAYRA	HH-U-PART WIG 16 HH-DOMINICAN STRAIGHT 14"	HH-FULL WIG 17 HH-ANDORA	HH-HEADBAND WIG 18 HH-BODY CURL 16"
BLEND U-PART WIG 19 COILY FRO 14" CURLY TWIST 14"	BLEND LACE WIG 20 MAXIMINA NORVINA	LACE WIG 21 PROMISE	LACE WIG 22 THAIS LUELLEN CEIDY
LACE WIG 24 ADELAIDE APOLIA	LACE WIG 25 NORIA	LACE WIG 26 LISSARA AVIANNA ELODIE	LACE PART WIG 28 DAMIANA COLBY ROXANNA
FULL WIG 30 TROY YADIRA NELI GAVINA	CONVERTI-CAP 32 CELESTIAL WAVES DAZZLING GLAM	HALF WIG 33 NEESHA H306	BRAID 34 SPRINGY AFRO TWIST

NEW COLORS



COLOR SHOWN : 51 (LEFT), 613 (RIGHT)

X-Pression Twisted Up[®] SPRINGY AFRO TWIST 24" 3X

The one and only, the Original Springy Afro Twist introduces new colors to its line up offering more variety for even the choosiest customers.



SPRINGY AFRO TWIST 24" 3X

AVAILABLE COLORS

- 1, 1B, 2, 4, 27, 30, 51, 350, 613, 2T1B/27, 2T1B/30, 2T1B/350, 2T1B/425, 2T1B/BLUE, 2T1B/PURPLE, 2T4/30, 2T99J/350, HOT PINK



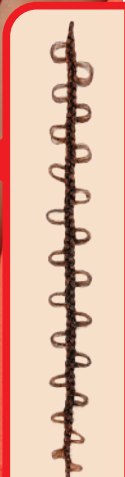
- Made with 100% Kanekalon
- Soft on skin & ultra lightweight
- Matches your kinks and curls
- Ideal for knotless styles, faux ponytails and crochet
- Pre-separated & pre-fluffed for easy installation

PRE-SEPARATED & PRE-FLUFFED



COLOR SHOWN : DRAGON FRUIT

18 STRANDS



COLOR SHOWN : DRAGON FRUIT
STYLE SHOWN : BUTTERFLY JUNGLE BOX BRAID 20"

12 STRANDS



COLOR SHOWN : 2T1B/425

18 STRANDS



COLOR SHOWN : 2T1B/30
BUTTERFLY JUNGLE SENEGAL TWIST 18"

18 STRANDS

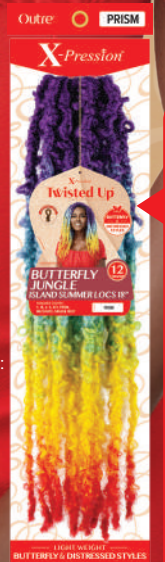


12 STRANDS



COLOR SHOWN : PRISM

12 STRANDS



X-Pression
Twisted Up
100% PREMIUM SYNTHETIC FIBER
JUNGLE STYLES



JUNGLE LOOKS PRE-STYLED WITH THE LEGENDARY X-PRESSION PRE-STRETCHED & LONG-LASTING WATERWAVE FRO TWIST

Give your customers exactly what they want - fast Jungle styles in braids and twists pre-styled with the legendary X-Pression® Pre-Stretched and Long-lasting Twisted Up® Waterwave Fro Twist!



BUTTERFLY JUNGLE BOX BRAID 12" 2X **NEW**

BUTTERFLY JUNGLE BOX BRAID 20" / 24" 2X **NEW**

BUTTERFLY JUNGLE ROSE BRAID 18" 2X **NEW**

BUTTERFLY JUNGLE SENEGAL TWIST 12" 2X **NEW**

BUTTERFLY JUNGLE ISLAND SUMMER LOCS 18" 2X **NEW**

AVAILABLE COLORS

- BUTTERFLY JUNGLE BOX BRAID 12" 2X : 1, 1B, 2, 4, 2T1B/27, 2T1B/30, MACCHIATO, DRAGON FRUIT
- BUTTERFLY JUNGLE BOX BRAID 20" : 1, 1B, 2, 4, 2T1B/27, 2T1B/30, MACCHIATO, DRAGON FRUIT
- BUTTERFLY JUNGLE BOX BRAID 24" : 1, 1B, 2, 4, 2T1B/27, 2T1B/30, MACCHIATO, DRAGON FRUIT
- BUTTERFLY JUNGLE ROSE BRAID 18" 2X : 1, 1B, 2, 4, 2T1B/27, 2T1B/30, 2T1B/350, 2T1B/425
- BUTTERFLY JUNGLE SENEGAL TWIST 12" 2X : 1, 1B, 2, 4, 2T1B/27, 2T1B/30, MACCHIATO, DRAGON FRUIT
- BUTTERFLY JUNGLE SEBEGAL TWIST 18" : 1, 1B, 2, 4, 2T1B/27, 2T1B/30, MACCHIATO, DRAGON FRUIT
- BUTTERFLY JUNGLE ISLAND SUMMER LOCS 18" : 1, 1B, 2, 4, 613, PRISM, MACCHIATO, DRAGON FRUIT

SPECIAL COLORS



2T1B/27 2T1B/30 2T1B/350 2T1B/425 MACCHIATO DRAGON FRUIT PRISM



COLOR SHOWN : 2T1B/30



COLOR SHOWN : 2T1B/30



COLOR SHOWN : 1B

X-Pression® Twisted Up®

100% PREMIUM SYNTHETIC FIBER

BONITA BOHO CRUSH LOCS 12" / 20"

The Bonita Boho Crush Locs 20" are the longer version of the popular twin 12". These locs are perfect for any time you want to switch it up! This light weight style can achieve the butterfly locs and distressed locs style, all without the hassle of a salon appointment. Get a quick, long-lasting and protective style.

- 100% Handcrafted
- Premium Synthetic Fiber
- Quick Long Lasting Protective Style
- Soft Texture & Lightweight
- Nonflammable
- Perfect match with Twisted Up Springy Afro Twist and Twisted Up Passion Twist

PASSION BOHO WATER CURL 20"

Twisted Up Passion Boho Water Curl 20" brings another unique style to the market that is perfect for passion twists and bomb twists. Better yet, have your customers create their own one-of-a-kind style by mix and matching the classic X-Pression Pre-Stretched, Twisted Up Springy Afro Twist and/or Waterwave Fro Twist!

- Premium Synthetic Fiber
- Quick Long Lasting Protective Style
- Soft Texture & Lightweight
- Nonflammable
- Perfect match with items from X-Pression, Twisted Up Springy Afro Twist and Twisted Up Passion Twist

BONITA BOHO CRUSH LOCS 12" | BONITA BOHO CRUSH LOCS 20"

PASSION BOHO WATER CURL 20"

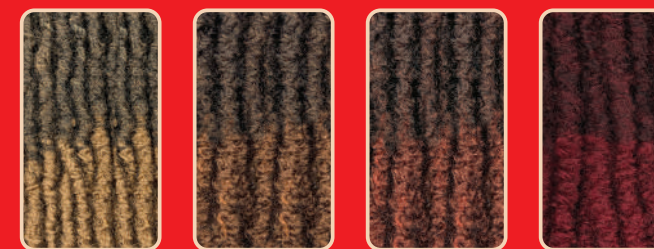
AVAILABLE COLORS

BONITA BOHO CRUSH LOCS 12" : 1, 1B, 2, 4, 2T1B/27, 2T1B/30, 2T1B/425

BONITA BOHO CRUSH LOCS 20" : 1, 1B, 2, 4, 2T1B/27, 2T1B/30, 2T1B/425

PASSION BOHO WATER CURL 20" : 1, 1B, 2, 4, 51, 613, 2T1B/27, 2T1B/30, 2T1B/350, 2T1B/425

SPECIAL COLORS



2T1B/27

2T1B/30

2T1B/350

2T1B/425



My
TRESSES
100% VIRGIN HUMAN HAIR

BLACK LABEL

Customize as you desire and style as you please, MyTresses Black Label is premium 100% Unprocessed Human Hair designed at a 10+ quality grade. Just in time for the human hair peak season, MyTresses Black Label Single Bundle packs now offer additional lengths and matching closure to please all consumers. The hair is healthier, thicker, and longer-lasting. Available in easy-to-blend textures that are designed to bleach/dye/customize, MyTresses is your tresses, your way.

- Bleach / Dye / Customize
- 100% Virgin Human Hair
- 10 Plus Quality Grade
- Fuller Density
- Natural Luster
- Long-Lasting Bundle Hair



SINGLE BUNDLE

HD CLOSURE



New
LENGTHS
10"-20"

AVAILABLE STYLES : NATURAL STRAIGHT / AVAILABLE COLORS : NATURAL BROWN
AVAILABLE LENGTHS : 10", 12", 14", 16", 18", 20", 22", 24", 26", 28", 30", 32", 34", 36", 38"

4"x4" & 13"x4"

AVAILABLE STYLES : 4"x4" NATURAL STRAIGHT, 4"x4" NATURAL BODY, 13"x4" NATURAL STRAIGHT
AVAILABLE COLORS : NATURAL BROWN
AVAILABLE LENGTHS : 4"x4" HD CLOSURE - 10", 12", 14", 16", 18" / 13"x4" HD CLOSURE - 12", 14"

My
TRESSES
PREMIUM 100% UNPROCESSED HUMAN HAIR

BLACK LABEL

13" x 4"
LACE FRONTAL WIG



Introducing premium hair paired with true versatility. MyTresses Black Label Lace Frontal Wig in Virgin Straight 24" has 13"x4" HD+ Transparent Lace that allows you to part how you please, and 10+ quality grade hair that can be customized to achieve the color you want.

- Premium 100% Unprocessed Human Hair
- Hand-Tied 13" x 4" Lace Frontal
- HD+ Transparent Lace
- Bleach/Dye/Customize
- Pre-plucked Hairline Edges with Baby Hairs
- Elastic Band for a Secure Fit

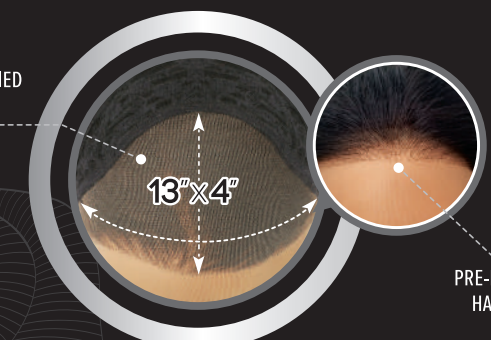


HH-VIRGIN STRAIGHT 24"

10+ QUALITY GRADE
BLEACH / DYE / CUSTOMIZE

AVAILABLE COLORS : NATURAL BLACK, NATURAL BROWN

13"x4" HAND-TIED
LACE FRONTAL



PRE-PLUCKED
HAIRLINE

My
TRESSES
100% UNPROCESSED HUMAN HAIR

GOLD LABEL

Lace Front Wig

9+ QUALITY GRADE BUNDLE HAIR
BLEACH / DYE / CUSTOMIZE

MyTresses Gold wigs come in new styles that are just the right choice for the shoppers looking for new Winter wigs made with customizable human hair in sexy waves, curls and sleek straight selections.



AVAILABLE COLORS :
NATURAL BLACK, NATURAL BROWN



COLOR SHOWN : NATURAL BROWN

HH-ADAYSHA LENGTH 18"



COLOR SHOWN : NATURAL BROWN

HH-HAISLEY LENGTH 24"



COLOR SHOWN : NATURAL BROWN

HH-KENNA LENGTH 24"



- 100% Unprocessed Human Hair
- Bleach / Dye / Customize
- 9+ Quality Grade
- Fuller Density
- Natural Luster
- Long-Lasting Bundle Hair



100% UNPROCESSED HUMAN HAIR LACE PART WIG

The easiest wig to wear has been paired with the prettiest Wet & Wavy Styles. These everyday-friendly styles are made with 100% Unprocessed Human Hair on a cap designed to wear in a snap.



HH-W&W DEEP CURL 14"

HH-W&W DEEP CURL 20"

HH-W&W NATURAL CURLY 14"

HH-W&W NATURAL DEEP 22"

HH-W&W NATURAL DEEP 16"



AVAILABLE COLORS : NATURAL BLACK, NATURAL BROWN

- 100% Unprocessed Human Hair
- Hand-Tied Deep Lace Part
- Shiftable Parting Option
- Bleach & Dye Friendly
- Breathable Mesh Cap with Elastic Band
- Full and Natural Wet & Wavy Styles

My TRESSES

100% UNPROCESSED HUMAN HAIR

PURPLE LABEL

FULL WIG

BLEACH / DYE / CUSTOMIZE

MyTresses Purple Label wigs are made with 100% Unprocessed Human Hair designed to bleach, dye, and customize effortlessly. HH-Rashina is a short cute style that is easy to wear, ready to customize and absolutely gorgeous.



COLOR SHOWN : NATURAL BROWN

HH - RASHINA



AVAILABLE COLORS :
NATURAL BLACK, NATURAL BROWN



- 100% Unprocessed Human Hair
- Bleach, Color & Customize
- Soft, Natural Luster
- Easy to Style & Maintain



COLOR SHOWN :
DBH 4/HONEY (LEFT), DR VIVID BURGUNDY (RIGHT)

HH-SAYRA

premium DUBY WIG

100% HUMAN HAIR

Wig season is here, and DUBY Wig has the sassy styles your shoppers are seeking this Winter. Made with 100% Premium Human Hair, HH-Sayra features a sophisticated clipper cut.

- 100% Premium Human Hair



AVAILABLE COLORS : 1, 1B, 2, 27, 30, 613, 950, DR GINGER, DR VIVID BURGUNDY, DB 1B/BLUE, DB 1B/PURPLE, DBH 4/HONEY

My TRESSES

100% UNPROCESSED HUMAN HAIR

GOLD LABEL

LEAVE OUT WIG

9+ QUALITY GRADE BUNDLE HAIR
BLEACH / DYE / CUSTOMIZE

MyTresses Gold Leave Out Wig is like a sew-in weave but better. This new style features a U-Part cap designed for leave out to reveal the wearer's own hair and part. The high grade human hair can be curled, straightened, bleached and dyed any way you like. Clip it in fast, then take it off - no commitment or salon appointment required.



COLOR SHOWN : NATURAL BROWN



HH-DOMINICAN STRAIGHT 14"

- 100% Unprocessed Human Hair
- Reveals Your Own Part for a Natural Look
- Narrower U-Part Opening for Less Leave Out
- Clips & Combs for Security
- Color & Customize - For optimal results, we suggest using the Natural Brown color
- Soft, Natural Luster
- Bacteria-Resistant Wig Cap



AVAILABLE COLORS : NATURAL BLACK, NATURAL BROWN



COLOR SHOWN : NATURAL BROWN



HH-ANDORA

AVAILABLE COLORS : NATURAL BLACK, NATURAL BROWN

- 100% Unprocessed Human Hair
- No Knot Parting
- Lays Flat
- Real Scalp Appearance
- Bleach, Color & Customize
- Soft, Natural Luster
- Easy to Style & Maintain



My TRESSES

100% UNPROCESSED HUMAN HAIR

PURPLE LABEL

NO KNOT PART WIG

BLEACH / DYE / CUSTOMIZE

Finally a realistic finished look can be achieved in no time! MyTresses® Purple Label is an easy-to-wear wig that features a special material that looks like real scalp. There's no need to hide any knots, so skip the tinting, and other fussiness.



Outre® HEADBAND WIG

100% UNPROCESSED HUMAN HAIR

The Outre Headband Wig is your pop-on-and-go styling superhero! Whether you need a speedy style when you're low on time, or you're a wig newbie - the 100% Unprocessed Human Hair Outre Headband Wig is the easy solution that will come to the rescue.



COLOR SHOWN : NATURAL BROWN



HH-BODY CURL 16"

9+ QUALITY GRADE
BLEACH / DYE / CUSTOMIZE

AVAILABLE COLORS : NATURAL BLACK, NATURAL BROWN

- 100% Unprocessed Human Hair
- Bleach / Dye / Customize
- Pre-Attached Headband
- Soft, Satin-Like Headband Material
- Easy & Fast Styling, No Glue Needed
- Reveal or Conceal Your Natural Hairline
- Great for Wig Beginners



COLOR SHOWN : NATURAL BLACK (TOP),
DR DRAGON FRUIT (BOTTOM)



COLOR SHOWN : NATURAL BLACK (TOP),
DR CHAI LATTE (BOTTOM)



COILY FRO 14" CURLY TWIST 14"

SPECIAL COLORS



AVAILABLE COLORS :

COILY FRO 14" : JET BLACK, NATURAL BLACK, NATURAL BROWN, CHOCOLATE BROWN, DR1B/2T3027, DR CHAI LATTE, DR DRAGON FRUIT, DR4/2T27613

CURLY TWIST 14" : JET BLACK, NATURAL BLACK, NATURAL BROWN, CHOCOLATE BROWN, DR1B/2T3027, DR CHAI LATTE, DR DRAGON FRUIT, DR4/2T27613



LEAVE OUT WIG

Big Beautiful Hair Leave Out Wig's Coily Fro 14" and Curly Twist 14" are the newest styles with a U-Part cap design for an undetectable unit. Simply place the U-Part opening where you would like your part to be, clip it in, and blend your hair. Big Beautiful Hair's natural textures paired with your own part creates an unmatched, realistic look.

- 100% Human Hair Premium Blend
- Reveals Your Own Part for a Natural Look
- Narrower U-Part Opening for Less Leave Out
- Shiftable - Place the Part Anywhere
- Clips & Combs for Security
- Easy-to-Blend Natural Curly Textures
- Bacteria-Resistant Wig Cap



Outre®

100% HUMAN HAIR BLEND

360 HAND-TIED
FRONTAL LACE WIG LACE FRONTAL

If customers are looking for a wig that feels custom made, then Outre Human Hair Blend 360 Frontal Lace wigs are meant to be theirs. Maximina and Norvina have natural curvy hairlines with frontal lace areas that provide full 360, temple and sideburn-to-sideburn coverage for the most flawless fit!

- 100% Human Hair Blend
- 360 All Around Hand-Tied Lace Edges
- HD Lace Frontal
- Pre-Plucked Hairline with a Natural Shape
- Full Temple Coverage & Sideburn-to-Sideburn Hand-Tied Lace
- Pre-Attached Elastic Band for a Flat Fit



COLOR SHOWN : HAVANA BROWN (TOP)
DRST2/CHOCOLATE CARAMEL (LEFT)
DRFF GOLDEN AMBER (RIGHT)

COLOR SHOWN : DRST2/CHOCOLATE CARAMEL (TOP)
DRFF2/GINGER BROWN (LEFT)
DRST MAPLE BROWN (RIGHT)



NORVINA 13" X 4"

MAXIMINA 13" X 6"

AVAILABLE COLORS :

NORVINA : 1, 1B, 2, 613, CHOCOLATE SWIRL, CINNAMON WINE, HAVANA BROWN, DR4/GOLDEN HONEY BLONDE, DRST2/CHOCOLATE CARAMEL, DRFF GOLDEN AMBER, DRFF2/GINGER BROWN

MAXIMINA : 1, 1B, 2, 613, HAVANA BROWN, DR4/GOLDEN HONEY BLONDE, DRST MAPLE BROWN, DRST2/CHOCOLATE CARAMEL, DRFF RED VELVET, DRFF GOLDEN AMBER, DRFF2/GINGER BROWN

SPECIAL COLORS



PERFECT HAIRLINE™

FULLY HAND-TIED 13"X6" LACE WIG

New 13"x6" Perfect Hairline Wig - Promise features a beautifully hand-tied frontal lace area with pre-plucked strands for the most natural finish! This ready-to-wear and easy-to-style unit will be an everyday classic for your consumers!

- Fully Hand-tied 13"x6" Frontal Lace
- Ear-to-ear soft HD Transparent Lace
- Natural Baby Hairs
- Comes with Pre-attached Elastic Band
- Pre-plucked Hairline
- Heat-styling Friendly



DRFF2/GINGER BROWN (TOP), DRFF RED VELVET (LEFT), DR2/CREAMY TOFFEE (RIGHT)



PROMISE 13" X 6"



AVAILABLE COLORS :

1, 1B, 2, 613, DR JAVA FROST, DR2/CREAMY TOFFEE, DR4/SANDY BLONDE, DRFF GOLDEN AMBER, DRFF RED VELVET, DRFF2/GINGER BROWN, 3DRFF CAJUN SPICE

SPECIAL COLORS



melted HAIRLINE

LACE FRONT WIG



DELUXE WIDE LACE PART

It's a hairline you won't want to hide! Melted Hairline Thais features ear-to-ear HD lace and a Deluxe Wide Lace Part with more hand-tied lace, so it blends beautifully with your skin to create a realistic finished look.

- Soft HD Transparent Lace
- Deluxe Wide Lace Part
- Pre-Plucked Hairline & Sideburns
- Pre-Attached Wide Elastic Band for a Secure Fit
- Redesigned ComfortFit Ear Contour
- Salon-Inspired Colors
- Natural Baby Hairs



COLOR SHOWN :
DR2/MAPLE BROWN (MAIN)
DR4/GOLDEN HONEY BLONDE,
DR CHERRY CRUSH
(BOTTOM LEFT TO RIGHT)



THAIS 12"

melted HAIRLINE

LACE FRONT WIG

Seamless hairline for the realest illusion – Melted Hairline lets you show off those edges! Go ahead and slick your hair back, tuck it behind your ear, and swoop the natural-looking baby hairs with the new Luellen and Ceidy.

- Soft HD Transparent Lace
- 5" Deep Parting
- Completely Pre-Plucked Hairline & Sideburns
- Pre-Attached Wide Elastic Band for a Secure Fit
- Natural Baby Hairs
- Redesigned ComfortFit Ear Contour



COLOR SHOWN :
DRFF2/GINGER BROWN (TOP)
DR CREAMY TRUFFLE (LEFT) DR4/GOLDEN HONEY BLONDE (RIGHT)

COLOR SHOWN :
DR COPPER BROWN (TOP)
MACCHIATO (LEFT), DRFF GOLDEN AMBER (RIGHT)



LUELLEN 14"



CEIDY 16"



SPECIAL COLORS



AVAILABLE COLORS :

THAIS : 1, 1B, 2, 613, MACCHIATO, DR CHERRY CRUSH, DR2/GINGER BROWN, DR2/GOLDEN AMBER, DR2/MAPLE BROWN, DR4/GOLDEN HONEY BLONDE

LUELLEN : 1, 1B, 2, 613, DR CREAMY TRUFFLE, DR2/MAPLE BROWN, DR4/GOLDEN HONEY BLONDE, DRFF GOLDEN AMBER, DRFF RED VELVET, DRFF2/GINGER BROWN

CEIDY : 1, 1B, 2, 613, MACCHIATO, DR COPPER BROWN, DR2/MAPLE BROWN, DR2/CINNAMON WINE, DR4/GOLDEN HONEY BLONDE, DRFF GOLDEN AMBER



SleekLay[®]

LACE FRONT WIG Part

Lace Front Wig SleekLay Part introduces new styles, Adelaide and Apolia. With more hand-tied lace near the part creates a sleek and flat look, get a hump-less and laid finish with no heat styling!

- Wider Hand-tied Lace Part
- Extra Hand-tied Lace Edges
- Pre-plucked Hairline
- Natural Baby Hairs
- Hump-less, Laid finish
- Heat-Friendly



COLOR SHOWN :
1B (TOP)
DRFF SUNKISS BROWN (BOTTOM)

COLOR SHOWN :
3DRFF AMBER BLONDE (TOP)
DR4/FAIRY BLONDE (BOTTOM)



APOLIA 18"

ADELAIDE 30"

AVAILABLE COLORS :

APOLIA : 1, 1B, 2, 613, CHOCOLATE FROST, DR4/CREAM BLONDE, DRFF BLACK CHERRY, DRFF HONEY BROWN, DRFF SUNKISS BROWN, DRFF2/CINNAMON SPICE

ADELAIDE : 1, 1B, 2, 613, CHOCOLATE FROST, DR2/CINNAMON SPICE, DR2/HAZELNUT, DR4/FAIRY BLONDE, DRFF BLACK CHERRY, 3DRFF AMBER BLONDE

SPECIAL COLORS



Outre[®]

LACE FRONT DELUXE

PREMIUM SYNTHETIC FIBER

The new Outre Lacefront Deluxe Wig features deeper lace edges for an upgraded hairline and more hand-tied lace at the part. The additional lace creates a flatter finish where it matters most, and the ear-to-ear HD lace will melt beautifully onto your skin. Experience the benefits of extra lace with Lacefront Deluxe Noria.

- Ear-to-Ear HD Transparent Lace
- Deeper Pre-Plucked, Hand-Tied Lace Edges
- 5" Deep Parting
- Natural Baby Hairs
- Heat Resistant



COLOR SHOWN : DR2/CREAMY TOFFEE (RIGHT)
DRFF2/GINGER BROWN (LEFT)



NORIA 12"

AVAILABLE COLORS :

1, 1B, 2, 613, DRST MAPLE BROWN, DR2/CINNAMON WINE, DR2/CREAMY TOFFEE, DR4/SANDY BLONDE, DRFF GOLDEN AMBER, DRFF2/GINGER BROWN



SPECIAL COLORS



Lace front™

LACE FRONT WIG

Meet Avianna, Elodie, and Lissara, Outre's newest Lace Front wigs designed to be on-trend and durable. These beauties are perfect for Winter and the holidays in a range of warm, beautiful colors.

- HD Transparent Lace
- Breathable, Comfortable Cap
- Natural Baby Hair
- Premium Synthetic Fibers



COLOR SHOWN :
3DRFF CAJUN SPICE (TOP)
STRAWBERRY BLONDE (BOTTOM)



COLOR SHOWN :
UC BRUNETTE HONEY MELT (TOP)
UC GINGER BROWN (BOTTOM)



COLOR SHOWN :
1B (LEFT)
DR JAVA FROST (RIGHT)



ELODIE 12" NATURAL BABY HAIRS

AVIANNA 26" PRE-PLUCKED LACE PARTING NATURAL BABY HAIRS

LISSARA 36" PRE-PLUCKED LACE PARTING NATURAL BABY HAIRS

AVAILABLE COLORS :

ELODIE : 1, 1B, 2, 613, STRAWBERRY BLONDE, DR RED VELVET, DR2/GINGER BROWN, DRST DRAGON FRUIT, DRST MAPLE BROWN, DRFF GOLDEN AMBER, 3DRFF CAJUN SPICE

AVIANNA : 1, 1B, 2, 613, MAPLE BROWN, UC BRUNETTE HONEY MELT, UC GINGER BROWN, DR CHOCOLATE CREAM, DR4/GOLDEN HONEY BLONDE, DRFF GOLDEN AMBER, DRFF RED VELVET

LISSARA : 1, 1B, 2, GINGER BROWN, MAPLE BROWN, DR JAVA FROST, DR2/CINNAMON WINE, DR4/GOLDEN HONEY BLONDE, DRFF GOLDEN AMBER, 3DRFF CAJUN SPICE

SPECIAL COLORS





Ready, set, go! The Daily Wig makes being beautiful quick & easy. With a natural hand-tied lace part in a variety of styles, this collection is ready-to-wear anywhere, and beautiful right out of the box. The Daily Wig is your everyday wig for life.

- Premium Synthetic Fibers
- Pre-Plucked & Hand-Tied Lace Part
- Breathable Mesh Cap
- Heat-Styling Friendly



COLOR SHOWN : CREAM SODA (TOP), DR2/MAPLE BROWN (BOTTOM)

ROXANNA 12"



COLOR SHOWN : GINGER BROWN

COLBY 12"



COLOR SHOWN : DRFF GOLDEN AMBER (LEFT), DR JAVA FROST (RIGHT)

DAMIANA 22"



AVAILABLE COLORS :

ROXANNA : 1, 1B, 2, 613, CREAM SODA, GINGER BROWN, DR CHOCOLATE CREAM, DR2/MAPLE BROWN, DRFF GOLDEN AMBER, DRFF RED VELVET

DAMIANA : 1, 1B, 2, 613, DR JAVA FROST, DR2/MAPLE BROWN, DR4/GOLDEN HONEY BLONDE, DRFF GOLDEN AMBER, DRFF RED VELVET, DRFF2/GINGER BROWN

COLBY : 1, 1B, 2, 613, GINGER BROWN, 430/PEEKA 3527, 425/PEEKA RED99J, DRFF GOLDEN AMBER

SPECIAL COLORS



wigpop™

SYNTHETIC FULL WIG

WIGPOP is back with more new styles in more trendy colors. Find your perfect wig to fit your mood, and then switch it up for another with these ready-to-wear and go wigs that are made with quality synthetic fibers and the best value.

- 100% Synthetic Fiber
- Range of Trendy Colors & Styles
- Great Value
- Ready to Wear & Go
- Heat-Styling Friendly



COLOR SHOWN: CREAM SODA



TROY



COLOR SHOWN: DR CARAMEL



YADIRA



COLOR SHOWN: DR2/CINNAMON WINE



NELI



COLOR SHOWN: DR RED VELVET



GAVINA



SPECIAL COLORS



AVAILABLE COLORS :

TROY : 1, 1B, 2, HT280/44, DX51, HT1B/350, DRB/1B425, CREAM SODA, GINGER BROWN, GOLDEN AMBER, DR CARAMEL, DRB CHOCOLATE SWIRL

YADIRA : 1, 1B, 2, 613, GINGER BROWN, MAPLE BROWN, DR CARAMEL, DR COPPER ORANGE, DR2/CINNAMON WINE, DR4/GOLDEN HONEY BLONDE

NELI : 1, 1B, 2, CHOCOLATE SWIRL, GINGER BROWN, GOLDEN BLONDE, DR2/CINNAMON WINE, DR2/GOLDEN AMBER

GAVINA : 1, 1B, 2, 613, CHOCOLATE SWIRL, GINGER BROWN, DR COPPER ORANGE, DR RED VELVET, DR2/CREAMY TOFFEE, DR2/GOLDEN AMBER, DR4/GOLDEN HONEY BLONDE

converti-cap™

PREMIUM SYNTHETIC FIBER



1 Wig, 1 Million Ways. The styling switch ups are limitless. Want a low ponytail today and a half up half down style tonight? You've got it. But that's not all! Fluff for extra volume and texture or shift the cap from side to side to reveal your own hairline for a realistic look. The Converti-Cap™ is the wig, re-imagined.

- Limitless styling possibilities
- Reveal your own hairline for a realistic look
- Breathable And Flexible Cap That Lays Flat
- Adjustable Drawstring For A Custom Fit
- Premium Synthetic Fibers



COLOR SHOWN : DR2/HAZELNUT (TOP),
DX POLAR GRAY, 1B (BOTTOM LEFT TO RIGHT)

COLOR SHOWN : DR2/CINNAMON SPICE (TOP),
1B, HT MIDNIGHT GRAY (BOTTOM LEFT TO RIGHT)

CELESTIAL WAVES DAZZLING GLAM

Quick WEAVE.

NEESHA
SOFT & NATURAL

Self-styled in 60 seconds, the new style Neesha H306 from Quick Weave is the classic go-to for all the classy holiday gatherings.

- Half Wig with New Cap Construction
- Lays Flat, Requires Less Leave Out, Fuller Style
- Soft and Natural NEESHA Texture
- High Heat Resistant Fiber



COLOR SHOWN : BLACK CHERRY MOUSSE (LEFT)
DR2/HONEY BROWN (RIGHT)



NEESHA H306



AVAILABLE COLORS
1, 1B, 2, S1B/30,
BLACK CHERRY MOUSSE,
CHOCOLATE FROST,
DR2/CINNAMON SPICE,
DR2/HAZELNUT,
DR2/HONEY BROWN,
DR4/GOLDEN HONEY MELT

SPECIAL COLORS



AVAILABLE COLORS

CELESTIAL WAVES :
1, 1B, 2, CHOCOLATE FROST,
DR BLACK CHERRY,
DR2/CINNAMON SPICE,
DR2/GOLDEN HONEY BLONDE,
DR2/HAZELNUT, DR2/HONEY BROWN,
DX POLAR GRAY,
DX MISTY SMOKE GRAY,
HT MIDNIGHT GRAY

DAZZLING GLAM :
1, 1B, 2, CHOCOLATE FROST,
DR BLACK CHERRY,
DR2/CINNAMON SPICE,
DR2/GOLDEN HONEY BLONDE,
DR2/HAZELNUT, DR2/HONEY BROWN,
DX POLAR GRAY,
DX MISTY SMOKE GRAY,
HT MIDNIGHT GRAY

SPECIAL COLORS



DISTRESSED LOOKS PRE-STYLED WITH
BEST-SELLING
SPRINGY AFRO TWIST

Our Bestselling, long-lasting and Lightweight Springy Afro Twist now comes in Pre-Styled Distressed Locs! Offer something unexpected this Winter with these eclectic crochet styles that are 100% Handcrafted!

X-Pression
Twisted Up®
SPRINGY AFRO TWIST
 100% KANEKALON FIBER



AVAILABLE LENGTHS & COLORS
 SPRINGY AFRO TWIST 12" 2X : 1, 1B, 2, 4, 27, 30, 2T1B/27, 2T1B/30, 2T1B/350, 2T1B/425
 SPRINGY AFRO TWIST 16" 3X : 1, 1B, 2, 4, 27, 30, 350, 425, 950, 51, 613, 2T1B/27, 2T1B/30, 2T1B/350, 2T1B/425, 2T1B/BLUE, 2T1B/PURPLE, 2T4/30, 2T99J/350, SUNKISS, SHERBERT, MERMAID, LATTE, HOTPINK, STRIKE, CARNIVAL, CHAMPAGNE AMBER, ORANGE SODA, SNOW BISCUIT
 SPRINGY AFRO TWIST 24" 3X : 1, 1B, 2, 4, 27, 30, 350, 51, 613, 2T1B/27, 2T1B/30, 2T1B/350, 2T1B/425, 2T1B/BLUE, 2T1B/PURPLE, 2T4/30, 2T99J/350, HOTPINK

PRE-SEPARATED & PRE-FLUFFED



See what the users are saying about these styles!



Braid Up™

100% Kanekalon®

GO PRO WITH BRAID UP

3X

- ✓ MADE WITH 100% KANEKALON
- ✓ PROFESSIONAL GRADE HAIR
- ✓ PRE-STRETCHED
- ✓ MORE VOLUME PER PACK
- ✓ ULTRA LIGHTWEIGHT
- ✓ HOT WATER SETTING



AVAILABLE STYLES:
PRE-STRETCHED BRAID 46" 3X,
PRE-STRETCHED BRAID 56" 3X
AVAILABLE COLORS:
1, 1B, 2, 4, 2T1B/27, 2T1B/30,
2T1B/350, 2T1B/425

Flame
Retardant
Fiber

