

Outre®

2022 VOL.1

BRAID BETTER WITH OUTRE

X-PRESSION | BRAID UP | TWISTED UP

LIL LOOKS | CURLETTE

85 Oxford Drive,
Moonachie, NJ 07074
USA

Outre®



04	X-PRESSION	X-PRESSION PRE-STRETCHED BRAID 42" 2X / 3X X-PRESSION PRE-STRETCHED BRAID 52" 3X / 6X X-PRESSION PRE-STRETCHED BRAID 72" 3X		
06	BRAID UP	BRAID UP PRE-STRETCHED BRAID 46" 3X BRAID UP PRE-STRETCHED BRAID 56" 3X		
08	TWISTED UP	TWISTED UP DIY PRE-STRETCHED BRAID 40" 4X TWISTED UP DIY PRE-STRETCHED BRAID 50" 2X / 4X TWISTED UP DIY PRE-STRETCHED BRAID 60" 4X		
10	X-PRESSION	X-PRESSION ULTRA BRAID X-PRESSION ULTRA BRAID 84" 3X		
11	JUMBO BRAID	JUMBO BRAID JUMBO BRAID 3X		
12	TWISTED UP	MARLEY TYPE SPRINGY AFRO TWIST 12" 2X / 16" 3X / 24" 3X SPRING TWIST 12" / 8"	WATERWAVE FRO TWIST 22" 2X WATERWAVE FRO TWIST SUPER LONG 3X	
18	TWISTED UP	CURLY BRAID SINGLE PASSION WATERWAVE 24" KINKY PASSION WATERWAVE 24" PASSION WATERWAVE II 22"	PASSION WATERWAVE II 26" SUPER LONG PASSION BOHO WATER CURL 20" PASSION BUTTERFLY CURL 20" PASSION CRUSH TWIST 24"	PASSION BOHEMIAN CURL 24" PASSION JERRY CURL 22" PASSION TROPICAL CURL 22"
22	TWISTED UP	CURLY BRAID MULTI PASSION WATERWAVE II 14" 3X PASSION BUTTERFLY CURL 14" 3X	PASSION WATERWAVE II 26" SUPER LONG 3X PASSION BUTTERFLY CURL 26" SUPER LONG 3X	
24	TWISTED UP	BOMB TWIST STYLES ORIGINAL BOMB TWIST 12" / 18" WAVY BOMB TWIST 12" / 18" / 24"	BOHO WAVY BOMBTWIST 10" 2X BOHO WAVY BOMB TWIST 20" WAVY BOMB TWIST CURLY TIP 12"	TWISTED OUT WAVY BOMB TWIST 14"
28	TWISTED UP	PASSION TWIST STYLES BOHO PASSION WATERWAVE 24" BOHO KINKY PASSION WATERWAVE 24"	PRE-TWISTED PASSION WATERWAVE 20" PASSION WATERWAVE FEED TWIST 18" BOHO PASSION SUMMER TWIST 10" 2X	PASSION BOHEMIAN PRE-TWISTED 30" PASSION BOHEMIAN FEED TWIST 22"
32	TWISTED UP	DISTRESSED STYLES BONITA CRUSH LOCS 12" BONITA CRUSH LOCS 24" 2X BONITA BOHO CRUSH LOCS 12"	BONITA BOHO CRUSH LOCS 20" BONITA SUMMER SPLASH LOCS 18" 2X BONITA TEMPTATION LOCS 20" 2X BONITA INFINITY LOCS 40"	BONITA BUTTERFLY TWIST LOCS 20" BOHO SPRING MERMAID LOCS 18" 3X MANGO LOCS 18" 3X
36	TWISTED UP	BUTTERFLY STYLES BUTTERFLY BOMBTWIST 12" / 18" BONITA ORIGINAL BUTTERFLY LOCS 12" 2X	BONITA ORIGINAL BUTTERFLY LOCS 30" BUTTERFLY PASSION TWIST 18" BUTTERFLY BOX BRAID 24"	BONITA BUTTERFLY LOCS 18" 2X BONITA BUTTERFLY LOCS COILY TIP 12"
40	TWISTED UP	JUNGLE STYLES BUTTERFLY JUNGLE BOX BRAID 20" / 24" BUTTERFLY JUNGLE BOX BRAID 12" 2X	BUTTERFLY JUNGLE ISLAND SUMMER LOCS 18" BUTTERFLY JUNGLE ROSE BRAID 18" 2X BUTTERFLY JUNGLE SENEGAL TWIST 18"	BUTTERFLY JUNGLE SENEGAL TWIST 12" 2X
44	LIL LOOKS	PRE-STRETCHED BRAID 32" 3X BOX BRAID 10" SENEGAL TWIST 10" BONITA BUTTERFLY LOCS COILY TIP 8"	STRAIGHT BAHAMA LOCS 10" WAVY BAHAMA LOCS 10" BOUNCE & BOUNCE 5" BUTTERFLY PASSION TWIST 8"	BOUNCE ROD 6" BOUNCY WAND 5" COCO FRO 5" / TWIST ROD 6" WAVY BOMB TWIST 8"
48	X-PRESSION	NATURAL KINKY TWIST 18" / 24" / 30" SOFT REGGAE BRAID 18" 2X BEACH CURL 14" 3X		
50	CURLETTE	4X BOUNCE ROD SET 8" 4X COIL ROD SET 8" 4X DEEP ROD SET 8"	4X LOOSE SPIRAL ROD SET 8" 4X TWIST ROD SET 10" CURLETTE LARGE 10" / 20"	CURLETTE MEDIUM 10" / 20" CURLETTE SMALL 10" / 20"
54	XPRESSION	4C - COILY LOOP 4A - KINKY LOOP 3C - WHIRLY LOOP CUEVANA BOUNCE	DEEP WAVE LOOP 14" OCEAN WAVE LOOP 14" WATER WAVE LOOP 14" 4 IN 1 LOOP_DEEP TWIST 14"	4 IN 1 LOOP_JERRY CURL 14" 4 IN 1 LOOP_KINKY CURL 14" 4 IN 1 LOOP_BAHAMAS CURL 14" 4 IN 1 LOOP_BOHEMIAN CURL 14"
60	XPRESSION	SENEGAL TWIST MEDIUM NATURAL TIP 45 STRANDS 14" / 20" / 26" SENEGAL TWIST MEDIUM NATURAL TIP 90 STRANDS 14" / 26" SENEGAL TWIST SMALL NATURAL TIP 45 STRANDS 20"		SENEGAL TWIST SMALL NATURAL TIP 90 STRANDS 20" BOX BRAID MEDIUM NATURAL TIP 45 STRANDS 14" / 20" / 26"
62	XPRESSION	NATURAL BOHO LOC 24" NATURAL BOX BRAID 24" STRAIGHT BAHAMA LOCS 14" / 18"	WAVY BAHAMA LOCS 14" / 18" STRAIGHT KINKY BAHAMA LOCS 12" WAVY KINKY BAHAMA LOCS 12"	

Outre's X-Pression and Twisted Up brands have a product to create all the timeless and trendy **braid, twist, loc and crochet braid styles** that women want. Preferred for their innovation and reliability, Xpression and Twisted Up continue to design and refine products that **create beautiful, natural looks easier**; wear comfortably; and inspire new styles on social media and in salons everywhere. Discover the always-expanding selection of **styles, textures, lengths and colors** from the brands that braiders trust and ask for by name.



X-Pression®

PRE-STRETCHED



PRE-STRETCHED BRAID 42" 2X

AVAILABLE COLORS : 18 COLORS AVAILABLE
 1, 1B, 2, 4, 27, 30, 350, 60, 613, BURGUNDY, 2T1B/27, 2T1B/30, 2T1B/350, 2T1B/BLUE, 2T1B/60, 2T1B/BURGUNDY, 2T1B/PURPLE, 2T1B/130S

PRE-STRETCHED BRAID 42" 3X

AVAILABLE COLORS : 36 COLORS AVAILABLE
 1, 1B, 2, 4, 27, 30, 33, 350, 425, 51, 60, 613, 613A, 99J, 130S, BLUE, BURGUNDY, DRAGON FRUIT, PURPLE, VIOLET, 2T1B/27, 2T1B/2730, 2T1B/27613, 2T1B/30, 2T1B/33, 2T1B/350, 2T1B/60, 2T1B/130S, 2T1B/BLUE, 2T1B/BURGUNDY, 2T1B/PURPLE, M4/27/30, M4/27/613, M27/613, M27/30/613, M27/30

PRE-STRETCHED BRAID 52" 3X

AVAILABLE COLORS : 59 COLORS AVAILABLE
 1, 1B, 2, 4, 27, 30, 33, 51, 60, 99J, 130S, 350, 425, 613, 613A, BLUE, BLUE RASPBERRY, BRIGHT RED, BURGUNDY, DEEP BLUE, DRAGON FRUIT, GREEN SHAKE, HOT PINK, MOODY SKY BLUE, PARTY PUNCH, PUMPKIN SPICE, PURPLE, PURPLE RAIN, RASTA, RED, ROSE GOLD, SKY BREEZY, SILVER GRAY, SMOKEY LILAC, SUNFLOWER, SUNSET, SWEDISH BLONDE, UNICORN, VIOLET, 2T1B/130S, 2T1B/27, 2T1B/2730, 2T1B/27613, 2T1B/30, 2T1B/33, 2T1B/350, 2T1B/60, 2T1B/BLUE, 2T1B/BURGUNDY, 2T1B/PURPLE, 2T1B/ROSE GOLD, 2T1B/SKY BREEZY, 2T1B/SILVER GRAY, 2T1B/SMOKEY LILAC, M4/27/30, M4/27/613, M27/30, M27/613, M27/30/613

PRE-STRETCHED BRAID 52" 6X

AVAILABLE COLORS : 8 COLORS AVAILABLE
 1, 1B, 2, 4, 2T1B/27, 2T1B/30, 2T1B/350, 2T1B/425

PRE-STRETCHED BRAID 72" 3X

AVAILABLE COLORS : 14 COLORS AVAILABLE
 1, 1B, 2, 4, 613, 2T1B/27, 2T1B/30, 2T1B/350, 2T1B/425, 2T1B/613, DRAGON FRUIT, M4/27/30, M4/27/613, M27/30/613

- Made with 100% Kanekalon
- Pre-Stretched & Pre-Layered
- Quickest Install
- Easy to Braid & Manage
- Ultra Lightweight
- Hot Water Set Friendly



Braid Up™
100% Kanekalon®



Braid Up™

100% Kanekalon®

Braid Up like a pro with the braiding hair that sets the standard! Each full pack of Braid Up is pre-stretched, made of soft, easy-to-braid fibers and creates voluminous, long-lasting styles. Whether you're an at-home braider or professional braider, Braid Up is the right choice to achieve every style you want to create.

3X

- ✓ MORE VOLUME
- ✓ PRE-STRETCHED



- Made with 100% Kanekalon
- Professional Grade Hair
- Pre-Stretched for Quick Braiding
- More Volume Per Pack
- Ultra Lightweight
- Hot Water Setting



AVAILABLE STYLES :
PRE-STRETCHED BRAID 46" 3X,
PRE-STRETCHED BRAID 56" 3X

AVAILABLE COLORS :
1, 1B, 2, 4, 2T1B/27, 2T1B/30,
2T1B/350, 2T1B/425

Twisted Up®

DIY PRE-STRETCHED



Made with the 100% Premium Synthetic Fiber, X-Pression Twisted Up DIY is bundles of pre-stretched & pre-layered braiding hair that creates neat, beautiful braids faster. Ultra lightweight and extra soft, these braids are as easy to wear as they are to install.

40"



DIY PRE-STRETCHED 4X 40"

AVAILABLE COLORS
1, 1B, 2, 4, 27, 30, 613, 2T1B/27, 2T1B/30, 2T1B/350, 2T1B/BURGUNDY, 2T1B/PURPLE

DIY PRE-STRETCHED 2X 50"

AVAILABLE COLORS
VIOLET, PUMPKIN SPICE, OCEAN SPLASH, HOT PINK, FUCHSIA, APPLE, MIDNIGHT, PURPLE, RED COPPER, ORANGE, GOLD, MINT

50"



DIY PRE-STRETCHED 4X 50"

AVAILABLE COLORS
1, 1B, 2, 27, 2T1B/27, 2T1B/30, 2T1B/350, 2T1B/APPLE, 2T1B/BLUE, 2T1B/BURGUNDY, 2T1B/FUSCHSIA, 2T1B/GOLD, 2T1B/HOT PINK, 2T1B/MINT, 2T1B/OCEAN SPLASH, 2T1B/ORANGE, 2T1B/PUMPKIN SPICE, 2T1B/PURPLE, 2T1B/RED COPPER, 2T1B/VIOLET, 30, 3T/CHERRY, 3T/FUCHSIA, 3T/OCEAN MINT, 3T/PLUM, 3T/TANGERINE, 3T/VIOLET MINT, 4, 613

60"



DIY PRE-STRETCHED 4X 60"

AVAILABLE COLORS
1, 1B, 2, 4, 2T1B/27, 2T1B/30, 2T1B/350, 2T1B/BURGUNDY, 2T1B/PURPLE

SPECIAL COLORS



- Pre-Stretched for Quick Braiding
- Pre-Layered for Easy, Natural Layers
- Tangle Free
- Hot Water Setting Friendly
- Flame Retardant

X-PRESSION TWISTED UP DIY

PRE-STRETCHED BRAID

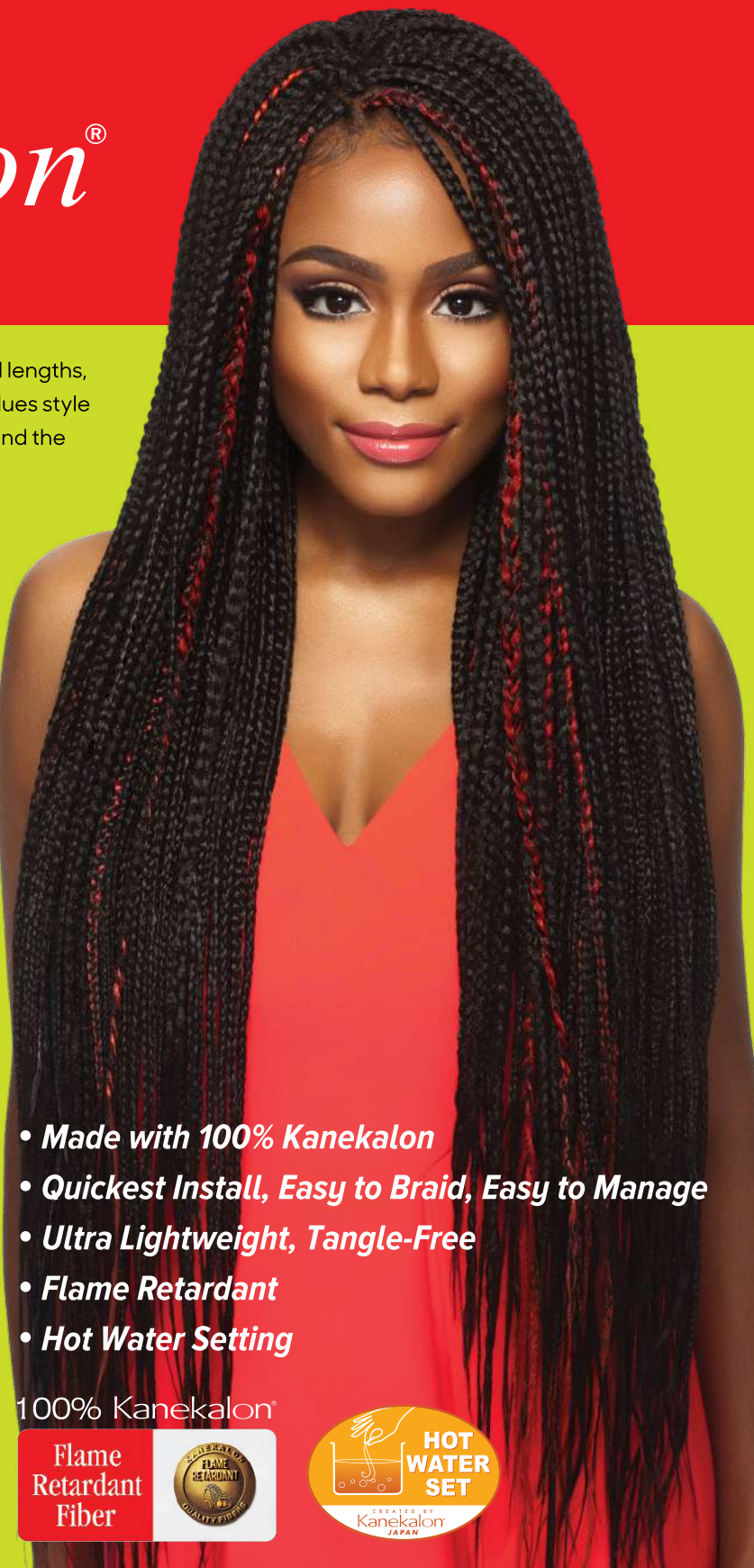
X-Pression®

Made with the finest Kanekalon fibers in a variety of colors and lengths, X-Pression Ultra Braid was created for the woman that values style and high-performance braiding hair. This hair is easy to style and the resilient fibers means that styles look neater longer.

**ORIGINAL
SINGLE PACK**



**3X TRIPLE
PACK VALUE**



- Made with 100% Kanekalon
- Quickest Install, Easy to Braid, Easy to Manage
- Ultra Lightweight, Tangle-Free
- Flame Retardant
- Hot Water Setting

100% Kanekalon®



JUMBO BRAID

Jumbo Braid is made with 100% Kanekalon hair, and has a soft yaki texture perfect for creating all styles of braids, Senegalese twists, crochet braid styles and more. Designed for incredible styling versatility, Jumbo Braid creates beautiful curls using hot water, and locks & holds extra securely when braiding.

- Made with 100% Kanekalon
- Hot Water Setting
- Flame Retardant



100% Kanekalon®



X-PRESSION ULTRA BRAID

AVAILABLE COLORS

1, 12, 130S, 144, 1B, 2, 24, 27, 280, 2T1B/130S, 2T1B/27, 2T1B/30, 2T1B/33, 2T1B/350, 2T1B/60, 2T1B/BLUE, 2T1B/BURGUNDY, 2T1B/PURPLE, 2T1B/VIOLET, 2T27/613, 30, 33, 34, 350, 4, 425, 44, 51, 6, 60, 613, 8, 99J, BLUE, BURGUNDY, M1B/30, M1B/33, M1B/350, M1B/BURGUNDY, M27/30, M27/613, M4/27, M4/30, PURPLE, RED, VIOLET, M1B/27, YELLOW, PINK

X-PRESSION ULTRA BRAID 3X 84"

AVAILABLE COLORS

1, 1B, 2, 4

JUMBO BRAID

AVAILABLE COLORS

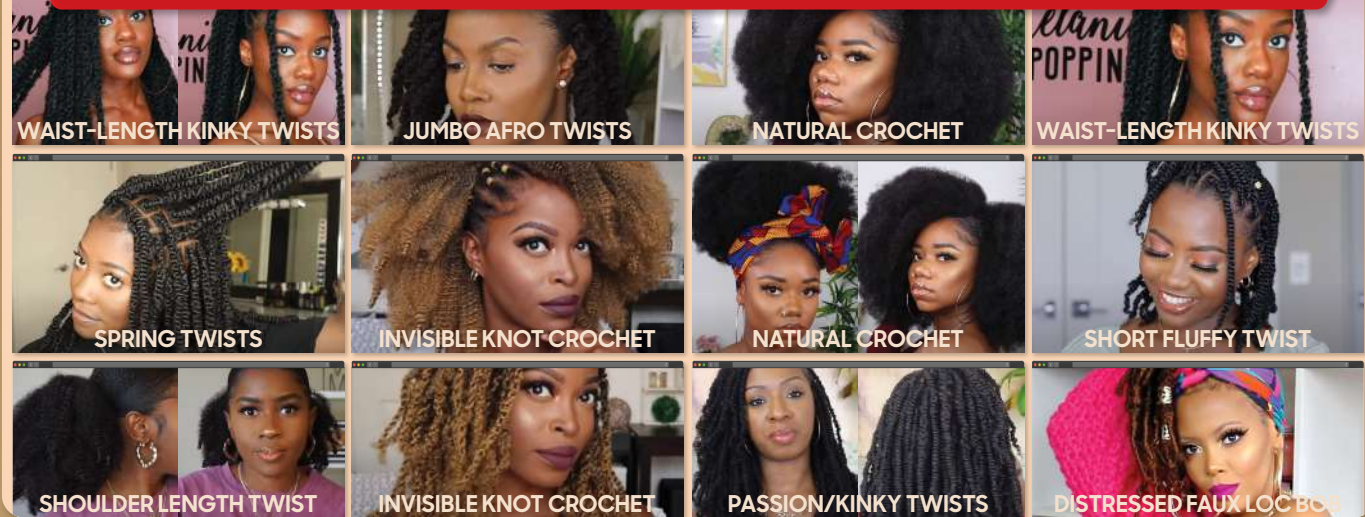
1, 1B, 2, 4, 130S, 144, 27, 280, 30, 33, 34, 350, 44, 51, 6, 60, 613, 8, 950, BU, M1B/27, M1B/30, M1B/33, M1B/350, M1B/BU, M30/144, M4/27, M4/30, NPINK, NPU, NRED, 2T1B/130S, 2T1B/27, 2T1B/30, 2T1B/33, 2T1B/350, 2T1B/60, 2T1B/BLU, 2T1B/BU, 2T1B/PUR, 2T1B/VIO, 2T27/613, NBL, BLUE CRUSH, PINK CRUSH

JUMBO BRAID 3X

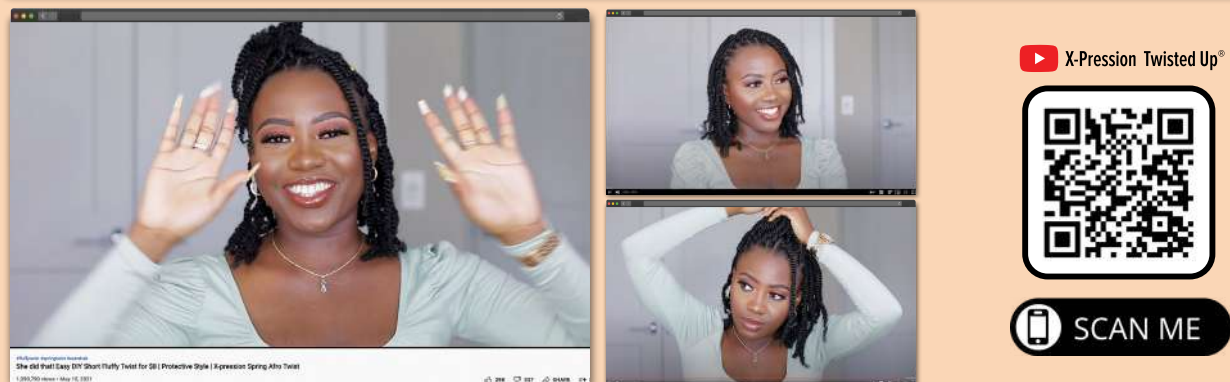
AVAILABLE COLORS

1, 1B, 2, 4, 27, 30, 33, 350, 613, BU, 2T1B/27, 2T1B/30, 2T1B/350, 2T1B/BU

1 LOYAL FANS ARE CONSTANTLY FINDING NEW LOOKS TO TRY!



2 1M+ VIEWS AND STILL COUNTING, CHECK OUT THIS VIDEO!



3 PRE-SEPARATED & PRE-FLUFFED FOR EASY INSTALLATION



100% Kanekalon®
Flame Retardant Fiber

AVAILABLE LENGTH & COLORS

- SPRINGY AFRO TWIST 12" 3X** : 1, 1B, 2, 4, 27, 30, 2T1B/27, 2T1B/30, 2T1B/350, 2T1B/425 (10 COLORS AVAILABLE)
- SPRINGY AFRO TWIST 16" 3X** : 1, 1B, 2, 4, 27, 30, 350, 425, 950, 51, 613, 2T1B/27, 2T1B/30, 2T1B/350, 2T1B/425, 2T1B/BLUE, 2T1B/PURPLE, 2T4/30, 2T99J/350, SUNKISS SHERBERT, MERMAID, LATTE, HOTPINK, STRIKE, CARNIVAL, CHAMPAGNE AMBER, ORANGE SODA, SNOW BISCUIT (28 COLORS AVAILABLE)
- SPRINGY AFRO TWIST 24" 3X** : 1, 1B, 2, 4, 27, 30, 51, 350, 613, 2T1B/27, 2T1B/30, 2T1B/350, 2T1B/425, 2T1B/BLUE, 2T1B/PURPLE, 2T4/30, 2T99J/350, HOT PINK (18 COLORS AVAILABLE)



X-Pression
Twisted Up®
SPRINGY AFRO TWIST

100% KANEKALON FIBER

Nothing beats the #1 best-selling, original Springy Afro Twist! This innovative hair with its unique, natural texture and its reliable, high-quality 100% Kanekalon fibers is the top pick for professional braiders. It blends beautifully, styles easily, and creates flawless finished looks consistently.



CREATES BUTTERFLY LOC'S & DISTRESSED LOC'S
 PERFECT FOR SPRING TWISTS & BOMB TWISTS

PRE-SEPARATED & PRE-FLUFFED

- Made with 100% Kanekalon
- Ideal For Butterfly Locs, Distressed Locs, Knotless Styles, Crochet Styles, Kinky Curly Ponytails and more
- Soft on Skin & Ultra Lightweight
- Variety of Lengths & Colors
- Matches Kinky Curly Hair



X-PRESSION TWISTED UP

SPRINGY AFRO TWIST

SPRING TWIST



SPRINGY AFRO TWIST



- 1** Grab a piece of Twisted Up® **SPRING TWIST**
- 2** Fluff & separate it
- 3** Or skip a step—Twisted Up® **SPRINGY AFRO TWIST** is pre-separated and pre-fluffed for you
- 4** Twist it up!



“ BOMB TWIST ”
Style

“ DISTRESSED ”
Style

“ BUTTERFLY ”
Style

5 Even better yet, we have **BOMB TWIST / DISTRESSED / BUTTERFLY** locs pre-made for you to finish the style in less than 2 hours!

- Made with 100% Kanekalon
- Ideal For Butterfly Locs, Distressed Locs, Knotless Styles And More
- Soft on Skin & Ultra Lightweight

- Matches Kinky Curly Hair
- Pre-Separated & Pre-Fluffed for Easy Installation



X-Pression
Twisted Up®
SPRING TWIST

100% KANEKALON FIBER

Whether it's locs and twists, or ponytails and curly fro crochet braids, Twisted Up's Spring Twist can do it all. This coily, customizable hair is made from 100% Kanekalon fibers that braiders prefer, and can create countless styles. Spring Twist is unmatched hair with unbeatable versatility.

100% Kanekalon
Flame Retardant Fiber

CREATES
BUTTERFLY LOCs & DISTRESSED LOCs

PERFECT FOR
SPRING TWISTS & BOMB TWISTS



AVAILABLE LENGTH & COLORS

SPRING TWIST 8" : 1, 1B, 2, 4, 51, 425, 613, 950, 2T1B/27, 2T1B/30, 2T1B/350, 2T1B/425

SPRING TWIST 12" : 1, 1B, 2, 4, 2T1B/27, 2T1B/30, 2T1B/350, 2T1B/425

- Made with 100% Kanekalon
- Ideal For Butterfly Locs, Distressed Locs, Knotless Styles And More
- Soft on Skin & Ultra Lightweight
- Matches Kinky Curly Hair
- Pre-Separated & Pre-Fluffed for Easy Installation

WATERWAVE FRO TWIST 22" 2X



STYLE & COLOR SHOWN : BUTTERFLY LOCS / 1B + DRAGON FRUIT (TOP) PASSION TWISTS / 1B (BOTTOM LEFT) CROCHET / 1B (BOTTOM RIGHT)

WATERWAVE FRO TWIST SUPER LONG 3X



COLOR SHOWN : 2T1B/30 (TOP), 1B (BOTTOM)

X-Pression
Twisted Up®

WATERWAVE FRO TWIST STYLE

100% KANEKALON FIBER

Not all braiding hair is equal. Meet the next generation of Waterwave hair. Customers have asked for a faster-to-install, tangle-free, pre-separated, and pre-fluffed hair made with the reliable Kanekalon fiber, and it's finally here! Get Waterwave Fro Twist - the innovative hair designed to style easier and create more consistent results than any Waterwave hair on the market.



“Soft On Skin & Ultra Lightweight”

1 THE SAFEST BRAIDING HAIR

2 THE MOST CONVENIENT BRAIDING HAIR

“Pre-Separated into 3 Pieces”



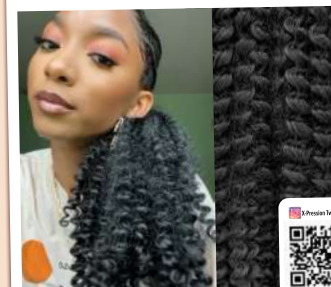
3 THE BEST VALUE BRAIDING HAIR

“Tangle-Free & Pre-Fluffed for Faster Installation”



4 THE MOST NATURAL LOOKING BRAIDING HAIR

“Human Hair Like Sheen made with 100% Kanekalon”



5 THE MOST STYLISH BRAIDING HAIR

“Finished Styles Look Polished and Won't Unravel”

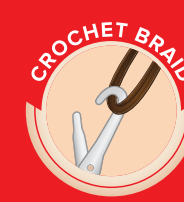


AVAILABLE COLORS

1, 1B, 2, 4, 51, 613, 2T1B/27, 2T1B/30, MACCHIATO, DRAGON FRUIT

AVAILABLE COLORS

1, 1B, 2, 4, 27, 30, 51, 425, 613, 2T1B/27, 2T1B/30, MACCHIATO, DRAGON FRUIT, BLUE, PURPLE, RED, HOT PINK



LIGHTWEIGHT

X-Pression
Twisted Up
100% PREMIUM SYNTHETIC FIBER

PASSION CURLY BRAID SINGLE

Take twists, braids, crochet styles and more to the next level with the new Twisted Up Passion Waterwave lineup. This customizable hair comes in a variety of Passion-inspired options that women can use to create countless looks.

- Premium Synthetic Fibers
- Soft & Lightweight
- Quick & Easy to Style
- Nonflammable

SPECIAL COLORS



X-PRESSION TWISTED UP

PASSION CURLY BRAID SINGLE



KINKY PASSION WATERWAVE 24"

AVAILABLE COLORS
1, 1B, 2, 4, 27, 30, 950, CHAMPAGNE BLONDE,
WHITE BLONDE, PEACH BLONDE, OM27, OM30,
OM350, OM425



PASSION WATERWAVE II 22"

AVAILABLE COLORS
1, 1B, 2, 4, 27, 30, 950, CHAMPAGNE BLONDE,
WHITE BLONDE, PEACH BLONDE, OM27, OM30,
OM350, OM425



PASSION WATERWAVE 24"

AVAILABLE COLORS
1, 1B, 2, 4, 27, 30, 33, 425, 950, 2T1B/27, 2T1B/30,
2T1B/425



PASSION WATERWAVE II 26" SUPER LONG

AVAILABLE COLORS
1, 1B, 2, 4, 2T1B/27, 2T1B/30, 2T1B/425, 3T1B/3027



PASSION BOHO WATER CURL 20"

AVAILABLE COLORS
1, 1B, 2, 4, 51, 613, 2T1B/27, 2T1B/30, 2T1B/350, 2T1B/425

X-Pression
Twisted Up
PASSION
CURLY BRAID
SINGLE

Take twists, braids, crochet styles and more to the next level with the new Twisted Up Passion Waterwave lineup. This customizable hair comes in a variety of Passion-inspired options that women can use to create countless looks.

- Premium Synthetic Fibers
- Soft & Lightweight
- Quick & Easy to Style
- Nonflammable

SPECIAL COLORS



X-PRESSION TWISTED UP

PASSION CURLY BRAID SINGLE

PASSION BUTTERFLY CURL 20"

AVAILABLE COLORS
1, 1B, 2, 4, 2T1B/27, 2T1B/30, 2T1B/425, 3T1B/3027

PASSION CRUSH TWIST 24"

AVAILABLE COLORS
1, 1B, 2, 4, 27, 30, 950, CHAMPAGNE BLONDE, WHITE BLONDE, PEACH BLONDE, OM27, OM30, OM350, OM425

PASSION BOHEMIAN CURL 24"

AVAILABLE COLORS
1, 1B, 2, 4, 27, 30, 33, 425, 950, 2T1B/27, 2T1B/30, 2T1B/425

PASSION JERRY CURL 22"

AVAILABLE COLORS
1, 1B, 2, 4, 27, 30, 950, CHAMPAGNE BLONDE, WHITE BLONDE, PEACH BLONDE, OM27, OM30, OM350, OM425

PASSION TROPICAL CURL 22"

AVAILABLE COLORS
1, 1B, 2, 4, 2T1B/27, 2T1B/30, 2T1B/350, 2T1B/425



X-Pression
Twisted Up®
100% PREMIUM SYNTHETIC FIBER

PASSION CURLY BRAID MULTI 3X

(14" 3X) Get 3 times the style and versatility with the new Passion-inspired styles from Twisted Up. This line up couples the convenience of a 3 pack with unlimited styling options and a variety of curl choices.

(26" 3X) Offer length and luscious curls in one grab-and-go 3 pack! For the crochet braids, locs, twists and braid looks that customers want, these 26" curly styles are a must-have on your shelf.

- Premium Synthetic Fibers
- Soft & Lightweight
- Quick & Easy to Style
- Nonflammable



PASSION WATERWAVE II 14" 3X

AVAILABLE COLORS
1, 1B, 2, 4, 2T1B/27, 2T1B/30,
2T1B/350, 2T1B/425

PASSION BUTTERFLY CURL 14" 3X

AVAILABLE COLORS
1, 1B, 2, 4, 2T1B/27, 2T1B/30,
2T1B/350, 2T1B/425

PASSION WATERWAVE II 26" SUPER LONG 3X

AVAILABLE COLORS
1, 1B, 2, 4, 2T1B/27, 2T1B/30,
2T1B/425, 3T1B/3027

PASSION BUTTERFLY CURL 26" SUPER LONG 3X

AVAILABLE COLORS
1, 1B, 2, 4, 2T1B/27, 2T1B/30,
2T1B/425, 3T1B/3027

SPECIAL COLORS



2T1B/27 2T1B/30 2T1B/350 2T1B/425 3T1B/3027

X-PRESSION TWISTED UP

PASSION CURLY BRAID MULTI



- Quick, Long Lasting Protective Style
- Crochet Loop
- Soft Texture
- Lightweight
- 100% Handcrafted
- Nonflammable
- Premium Synthetic Fiber



20 STRANDS
100% Kanekalon®
Flame Retardant Fiber

LIGHTWEIGHT

COLOR SHOWN : 1B

X-Preasion
Twisted Up®
100% PREMIUM SYNTHETIC FIBER

BOMB TWIST

Bomb Twists have been kicked up a notch with Twisted Up's varieties in classic, wavy and twist out styles. Not only are these pre-styled twists on-trend, they've been crafted with care to create the long-lasting, natural looks that women expect from Twisted Up crochet braids. It's style, speed, quality and variety together in one line.



LIGHTWEIGHT
100% Kanekalon®
Flame Retardant Fiber

COLOR SHOWN : 2T1B/350

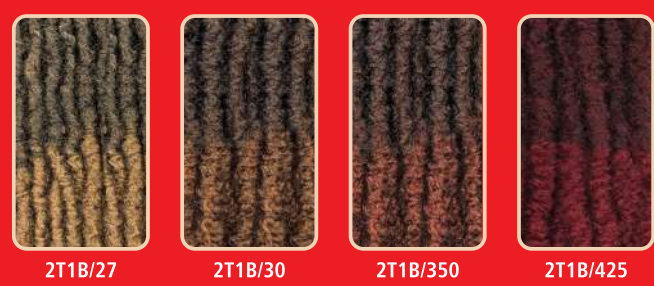
ORIGINAL BOMB TWIST 12" & 18"

WAVY BOMB TWIST 12", 18", 24"

AVAILABLE COLORS

ORIGINAL BOMB TWIST 12" & ORIGINAL BOMB TWIST 18" :
1, 1B, 2, 4, 51, 425, 613, 950, 2T1B/27, 2T1B/30, 2T1B/350, 2T1B/425

SPECIAL COLORS



AVAILABLE COLORS

WAVY BOMB TWIST 12" & 18" :
1, 1B, 2, 4, 51, 425, 613, 950, 2T1B/27, 2T1B/30, 2T1B/350, 2T1B/425, CHAMPAGNE BLONDE, WHITE BLONDE, PEACH BLONDE

WAVY BOMB TWIST 24" :
1, 1B, 2, 4, 2T1B/30, 2T1B/425

SPECIAL COLORS



X-Pression
Twisted Up®
100% PREMIUM SYNTHETIC FIBER

BOMB TWIST

- Quick, Long Lasting Protective Style
- Crochet Loop
- Soft Texture
- Lightweight
- 100% Handcrafted
- Nonflammable
- Premium Synthetic Fiber



20 STRANDS

18 STRANDS

20 STRANDS

36 STRANDS



BOHO WAVY BOMB TWIST 10" 2X

BOHO WAVY BOMB TWIST 20"

WAVY BOMB TWIST CURLY TIP 12"

TWISTED OUT WAVY BOMB TWIST 14"

AVAILABLE COLORS
1, 1B, 2, 4, 2T1B/27, 2T1B/30, MACCHIATO, DRAGON FRUIT

AVAILABLE COLORS
1, 1B, 2, 4, 51, 425, 613, 950, 2T1B/27, 2T1B/30, 2T1B/350, 2T1B/425

AVAILABLE COLORS
1, 1B, 2, 4, 51, 425, 613, 950, 2T1B/27, 2T1B/30, 2T1B/350, 2T1B/425

AVAILABLE COLORS
1, 1B, 2, 4, 51, 425, 613, 950, 2T1B/27, 2T1B/30, 2T1B/350, 2T1B/425

SPECIAL COLORS



X-Pression

Twisted Up[®]
100% PREMIUM SYNTHETIC FIBER

PASSION TWIST STYLES

Spice things up with Passion Waterwave Twists from Twisted Up. This selection of pre-styled crochet braids is the perfect blend of reliably high-quality hair, and quick, gorgeous styles.

- Quick, Long Lasting Protective Style
- Crochet Loop
- Soft Texture
- Lightweight
- Nonflammable
- Premium Synthetic Fiber



LIGHTWEIGHT



12 STRANDS

COLOR SHOWN : 2T1B/425

BOHO PASSION WATERWAVE 24"



12 STRANDS

COLOR SHOWN : 2T1B/30

BOHO KINKY PASSION WATERWAVE 24"



12 STRANDS

COLOR SHOWN : 2T1B/350

PRE-TWISTED PASSION WATERWAVE 20"

AVAILABLE COLORS
1, 1B, 2, 4, 2T1B/27, 2T1B/30,
2T1B/350, 2T1B/425,
PEACH BLONDE, WHITE BLONDE

AVAILABLE COLORS
1, 1B, 2, 4, 2T1B/27, 2T1B/30,
2T1B/350, 2T1B/425,
PEACH BLONDE, WHITE BLONDE

AVAILABLE COLORS
1, 1B, 2, 4, 2T1B/27, 2T1B/30,
2T1B/350, 2T1B/425,
PEACH BLONDE, WHITE BLONDE

SPECIAL COLORS



2T1B/27 2T1B/30 2T1B/350 2T1B/425 PEACH BLONDE WHITE BLONDE



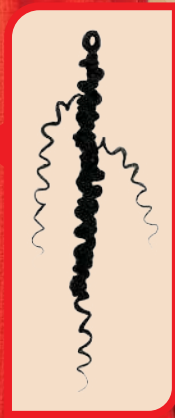
12
STRANDS

COLOR SHOWN : 2T1B/30



20
STRANDS

COLOR SHOWN : MACCHIATO



20
STRANDS

COLOR SHOWN : 2T1B/27



20
STRANDS

COLOR SHOWN : 2T1B/425



X-Pression®
Twisted Up®
100% PREMIUM SYNTHETIC FIBER

PASSION TWIST STYLES

- Quick, Long Lasting Protective Style
- Crochet Loop
- Soft Texture
- Lightweight
- Nonflammable
- Premium Synthetic Fiber



LIGHTWEIGHT



**PASSION BOHEMIAN
PRE-TWISTED 30"**

**BOHO PASSION
SUMMER TWIST 10" 2X**

**PASSION WATERWAVE
FEED TWIST 18"**

**PASSION BOHEMIAN
FEED TWIST 22"**

AVAILABLE COLORS

1, 1B, 2, 613, 2T1B/27, 2T1B/30,
2T1B/350, 2T1B/425

AVAILABLE COLORS

1, 1B, 2, 4, 2T1B/27, 2T1B/30,
MACCHIATO, DRAGON FRUIT

AVAILABLE COLORS

1, 1B, 2, 4, 2T1B/27, 2T1B/30,
2T1B/350, 2T1B/425

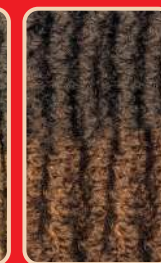
AVAILABLE COLORS

1, 1B, 2, 4, 2T1B/27, 2T1B/30,
2T1B/350, 2T1B/425

SPECIAL COLORS



2T1B/27



2T1B/30



2T1B/350



2T1B/425



MACCHIATO



DRAGON FRUIT

X-Pression
Twisted Up

DISTRESSED STYLES

Offer something unexpected! We've taken the eclectic Bonita loc style and created multiple crochet braid options. With so many pre-styled crochet braid looks to choose from, we've created the perfect product line for the woman that loves to switch up her look as much as she loves saving time.

- Quick, Long Lasting Protective Style
- Crochet Loop
- Soft Texture
- Lightweight
- 100% Handcrafted
- Nonflammable
- Premium Synthetic Fiber

SPECIAL COLORS



BONITA CRUSH LOCS 12"

AVAILABLE COLORS
1, 1B, 2, 4, 2T1B/27, 2T1B/30, 2T1B/425, MACCHIATO

BONITA CRUSH LOCS 24" 2X

AVAILABLE COLORS
1, 1B, 2, 4, 2T1B/27, 2T1B/30, 2T1B/425, MACCHIATO, ESPRESSO, CAPPUCCINO

BONITA BOHO CRUSH LOCS 12"

AVAILABLE COLORS
1, 1B, 2, 4, 2T1B/27, 2T1B/30, 2T1B/425

BONITA BOHO CRUSH LOCS 20"

AVAILABLE COLORS
1, 1B, 2, 4, 2T1B/27, 2T1B/30, 2T1B/425

BONITA SUMMER SPLASH LOCS 18" 2X

AVAILABLE COLORS
1, 1B, 2, 4, 2T1B/27, 2T1B/30, 2T1B/425, 3T1B/3027

X-PRESSION TWISTED UP
DISTRESSED STYLES

X-Pression
Twisted Up
 100% PREMIUM SYNTHETIC FIBER

DISTRESSED STYLES

- Quick, Long Lasting Protective Style
- Crochet Loop
- Soft Texture
- Lightweight
- 100% Handcrafted
- Nonflammable
- Premium Synthetic Fiber

SPECIAL COLORS



X-PRESSION TWISTED UP
 DISTRESSED STYLES

BONITA TEMPTATION LOCS 20" **2X**

AVAILABLE COLORS
 1, 1B, 2, 4, 2T1B/27, 2T1B/30, 2T1B/425, MACCHIATO, ESPRESSO, CAPPUCINO

BONITA INFINITY LOCS 40"

AVAILABLE COLORS
 1, 1B, 2, 4, 613, 2T1B/30, 2T1B/425, 2T4/27

BONITA BUTTERFLY TWIST LOCS 20"

AVAILABLE COLORS
 1, 1B, 2, 4, 2T1B/27, 2T1B/30, 2T1B/350, 2T1B/425

BOHO SPRING MERMAID LOCS 18" **3X**

AVAILABLE COLORS
 1, 1B, 2, 4, 2T1B/30, 2T1B/350, DRAGON FRUIT, MACCHIATO

MANGO LOCS 18" **3X**

AVAILABLE COLORS
 1, 1B, 2, 24K GOLD, DRAGON FRUIT, MACCHIATO, LT1B/30, LT1B/350, CALIFORNIA SUNSET, BERRY



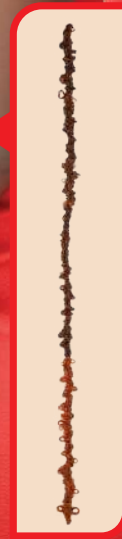
10
STRANDS

BUTTERFLY
LOCS &
DISTRESSED
LOCS
STYLE



18
STRANDS

BUTTERFLY
LOCS &
DISTRESSED
LOCS
STYLE



12
STRANDS

BUTTERFLY
&
DISTRESSED
STYLES



12
STRANDS

BUTTERFLY
&
DISTRESSED
STYLES



**BONITA ORIGINAL
BUTTERFLY LOCS 30"**

AVAILABLE COLORS
1, 1B, 2, 4, 2T1B/27,
2T1B/30, MACCHIATO,
DRAGON FRUIT

**BONITA ORIGINAL
BUTTERFLY LOCS 12" 2X**

AVAILABLE COLORS
1, 1B, 2, 4, 613, 2T1B/30,
2T1B/425, 2T4/2730,
MACCHIATO, DRAGON FRUIT,
OCEAN BLUE

**BUTTERFLY
BOMBTWIST 12"**

AVAILABLE COLORS
1, 1B, 2, 4, 2T1B/27,
2T1B/30, MACCHIATO,
DRAGON FRUIT

BUTTERFLY BOMBTWIST 18"

AVAILABLE COLORS
1, 1B, 2, 4, 2T1B/27, 2T1B/30,
MACCHIATO, DRAGON FRUIT

X-Pression
Twisted Up
100% PREMIUM SYNTHETIC FIBER
**BUTTERFLY
STYLES**

Butterfly twists and locs are the hottest styles in salons and social media. Now get them the easy way - no fuss or salon appointment needed! For women that want trendy looks fast and affordably - Twisted Up has the perfect pre-styled Butterfly options.

- Quick, Long Lasting Protective Style
- Crochet Loop
- Soft Texture
- Lightweight
- 100% Handcrafted
- Nonflammable
- Premium Synthetic Fiber



SPECIAL COLORS



2T1B/27 2T1B/30 2T1B/425 2T4/2730 MACCHIATO DRAGON FRUIT OCEAN BLUE

X-Pression
Twisted Up®
100% PREMIUM SYNTHETIC FIBER

BUTTERFLY STYLES

- Quick, Long Lasting Protective Style
- Crochet Loop
- Soft Texture
- Lightweight
- 100% Handcrafted
- Nonflammable
- Premium Synthetic Fiber



12 STRANDS

BUTTERFLY & DISTRESSED STYLES

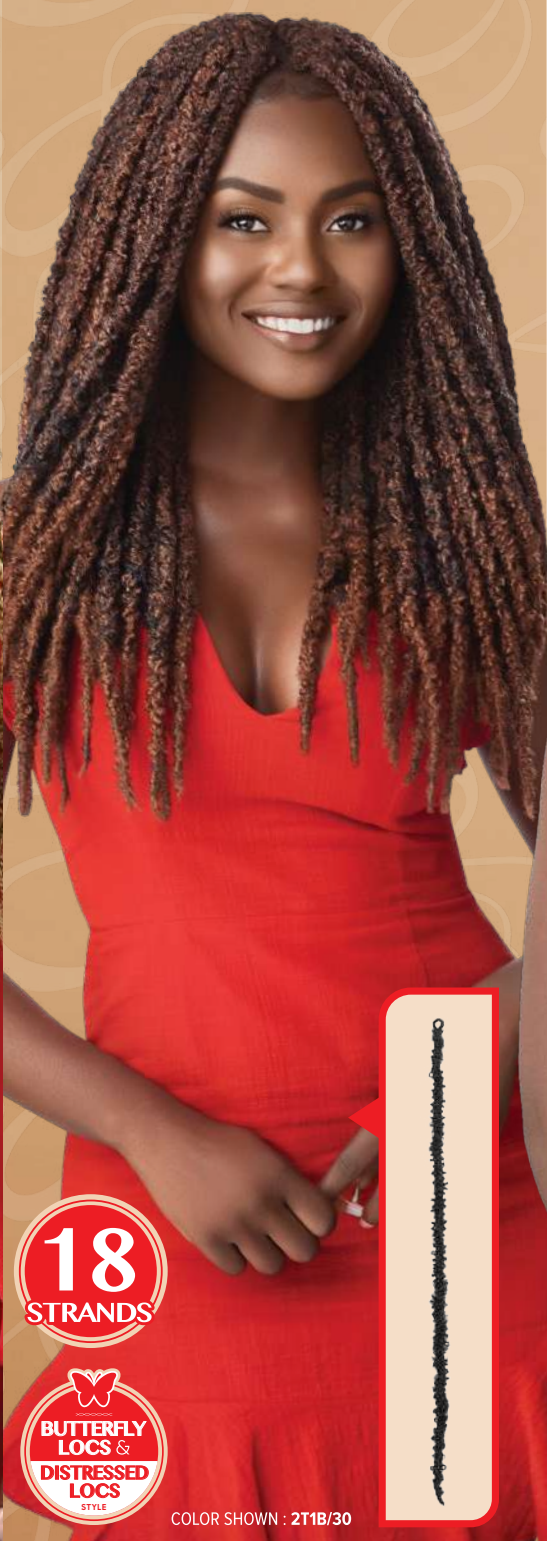
COLOR SHOWN : 2T1B/30



12 STRANDS

BUTTERFLY & DISTRESSED STYLES

COLOR SHOWN : 2T1B/27



18 STRANDS

BUTTERFLY LOCS & DISTRESSED LOCS STYLE

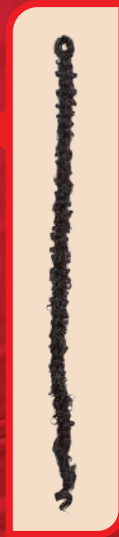
COLOR SHOWN : 2T1B/30



12 STRANDS

BUTTERFLY LOCS & DISTRESSED LOCS STYLE

COLOR SHOWN : EMERALD BLUE



BUTTERFLY PASSION TWIST 18"

BUTTERFLY BOX BRAID 24"

BONITA BUTTERFLY LOCS 18" 2X

BONITA BUTTERFLY LOCS COILY TIP 12"

AVAILABLE COLORS

BUTTERFLY PASSION TWIST 18" : 1, 1B, 2, 4, 2T1B/27, 2T1B/30, MACCHIATO, DRAGON FRUIT

BUTTERFLY BOX BRAID 24" : 1, 1B, 2, 4, 2T1B/27, 2T1B/30, MACCHIATO, DRAGON FRUIT

BONITA BUTTERFLY LOCS 18" 2X : 1, 1B, 2, 4, 2T1B/30, 2T1B/425, 2T4/27, 2T99J/350, EMERALD BLUE, FOREST GREEN, FRENCH GRAY, SUNKISS

BONITA BUTTERFLY LOCS COILY TIP 12" : 1, 1B, 2, 4, 613, 2T1B/30, 2T4/27, 2T99J/350, EMERALD BLUE, FRENCH GRAY

SPECIAL COLORS



2T1B/27

2T1B/30

2T1B/425

2T4/27

2T99J/350

MACCHIATO

DRAGON FRUIT

EMERALD BLUE

FOREST GREEN

FRENCH GRAY

SUNKISS



12
STRANDS

STYLE SHOWN : BUTTERFLY JUNGLE BOX BRAID 20" | COLOR SHOWN : DRAGON FRUIT

BUTTERFLY JUNGLE BOX BRAID 20"/24"

AVAILABLE COLORS

BUTTERFLY JUNGLE BOX BRAID 20" :
1, 1B, 2, 4, 2T1B/27, 2T1B/30,
MACCHIATO, DRAGON FRUIT

AVAILABLE COLORS

BUTTERFLY JUNGLE BOX BRAID 24" :
1, 1B, 2, 4, 2T1B/27, 2T1B/30,
MACCHIATO, DRAGON FRUIT



18
STRANDS

COLOR SHOWN : DRAGON FRUIT

BUTTERFLY JUNGLE BOX BRAID 12" 2X

AVAILABLE COLORS

BUTTERFLY JUNGLE BOX BRAID 12" 2X :
1, 1B, 2, 4, 2T1B/27, 2T1B/30,
MACCHIATO, DRAGON FRUIT

SPECIAL COLORS



2T1B/27 2T1B/30 MACCHIATO DRAGON FRUIT

X-Pression
Twisted Up
100% PREMIUM SYNTHETIC FIBER
JUNGLE STYLES

Twists, locs and braids don't have to be boring, or take all day to create. Twisted Up's Jungle crochet braids makes this eye-catching style fast. Get stunning styles in half the time right at home. It's style made easy!

- Quick, Long Lasting Protective Style
- Crochet Loop
- Soft Texture
- Lightweight
- Nonflammable
- Premium Synthetic Fiber



X-Pr^{ession}
Twisted Up[®]
100% PREMIUM SYNTHETIC FIBER

JUNGLE STYLES

- Quick, Long Lasting Protective Style
- Crochet Loop
- Soft Texture
- Lightweight
- Nonflammable
- Premium Synthetic Fiber



LIGHTWEIGHT



12 STRANDS

COLOR SHOWN : PRISM



18 STRANDS

COLOR SHOWN : 2T1B/425



12 STRANDS

COLOR SHOWN : 2T1B/30



18 STRANDS

COLOR SHOWN : 2T1B/30



BUTTERFLY JUNGLE ISLAND SUMMER LOCS 18"

BUTTERFLY JUNGLE ROSE BRAID 18" 2X

BUTTERFLY JUNGLE SENEGAL TWIST 18"

BUTTERFLY JUNGLE SENEGAL TWIST 12" 2X

AVAILABLE COLORS

- BUTTERFLY JUNGLE ISLAND SUMMER LOCS 18" : 1, 1B, 2, 4, 613, PRISM, MACCHIATO, DRAGON FRUIT
- BUTTERFLY JUNGLE ROSE BRAID 18" 2X : 1, 1B, 2, 4, 2T1B/27, 2T1B/30, 2T1B/350, 2T1B/425
- BUTTERFLY JUNGLE SENEGAL TWIST 18" : 1, 1B, 2, 4, 2T1B/27, 2T1B/30, MACCHIATO, DRAGON FRUIT
- BUTTERFLY JUNGLE SENEGAL TWIST 12" 2X : 1, 1B, 2, 4, 2T1B/27, 2T1B/30, MACCHIATO, DRAGON FRUIT

SPECIAL COLORS



X-Pression®

Lil LOOKS™

100% PREMIUM SYNTHETIC FIBER

- Quick, Long-Lasting Protective Style
- Kid-Friendly Sizes & Lengths
- Crochet Loop
- Easy to Maintain & Manage
- Soft Texture & Lightweight
- Premium Synthetic Fiber

PERFECT LIL LENGTHS & LIL SIZES

X-Pression Lil Looks creates long-lasting, kid-friendly crochet styles for your little cutie. Now there is no need to cut and customize traditional crochet braids, this hair is the perfect size and made of resilient fibers that maintain a neat look longer.



BONITA BUTTERFLY LOCS COILY TIP 8"



STRAIGHT BAHAMA LOCS 10"
COLOR SHOWN: 1B + 30



WAVY BAHAMA LOCS 10"
COLOR SHOWN: 1B + BU



BOX BRAID 10"
COLOR SHOWN: 1B



SENEGAL TWIST 10"
COLOR SHOWN: 1B + BU



PRE-STRETCHED BRAID 32" 3X
COLOR SHOWN: 1B

AVAILABLE COLORS

- BONITA BUTTERFLY LOCS COILY TIP 8" : 1, 1B, 2, 4, 2T1B/30, 2T4/27
 STRAIGHT BAHAMA LOCS 10", WAVY BAHAMA LOCS 10" : 1, 1B, 2, 4, 27, 30, 99J, BU
 BOX BRAID 10", SENEGAL TWIST 10" : 1, 1B, 2, 27, 30, 4, 99J, BU
 PRE-STRETCHED BRAID 32" 3X : 1, 1B, 2, 4, 2T1B/27, 2T1B/30, 2T1B/350, 2T1B/425



X-Pression®

Lil LOOKS™

100% PREMIUM SYNTHETIC FIBER



BUTTERFLY PASSION TWIST 8"



BOUNCE ROD 6"
COLOR SHOWN: 1B

TWIST ROD 6"
COLOR SHOWN: 99J

BOUNCE & BOUNCE 5"
COLOR SHOWN: 1B + 2T1B/27

WAVY BOMB TWIST 8"
COLOR SHOWN: 1B

COCO FRO 5"
COLOR SHOWN: 2T1B/350

BOUNCY WAND 5"
COLOR SHOWN: 2T1B/30

AVAILABLE COLORS

- BOUNCE ROD 6"** : 1, 1B, 2, 27, 30, 4, 99J, BU
- TWIST ROD 6"** : 1, 1B, 2, 27, 30, 4, 99J, BU
- BOUNCE & BOUNCE 5"** : 1, 1B, 2T1B/27, 2T1B/30, 4, 99J, BU
- WAVY BOMB TWIST 8"** : 1, 1B, 2, 27, 2T1B/27, 2T1B/30, 30, 4, 99J, BU, DRAGON FRUIT, MACCHIATO

AVAILABLE COLORS

- COCO FRO 5"** : 1, 1B, 2, 4, 2T1B/27, 2T1B/30, 2T1B/350, 2T1B/425
- BOUNCY WAND 5"** : 1, 1B, 2T1B/30, 99J, BU
- BUTTERFLY PASSION TWIST 8"** : 1, 1B, 2, 4, 2T1B/27, 2T1B/30, DRAGON FRUIT, MACCHIATO



X-Pression®

Natural Kinky Twist

18" 24" 30"



STYLE & COLOR SHOWN : NATURAL KINKY TWIST 30" | 1B+27+30

AVAILABLE COLORS :

NATURAL KINKY TWIST 18", 24" : 1, 1B, 2, 4, 27, 30, 33, 350, 425, 613, 950, 51, 2T1B/30, 2T1B/350, 2T1B/425, 2T4/30

NATURAL KINKY TWIST 30" : 1, 1B

X-Pression®

Soft Reggae BRAID 2X

18"



COLOR SHOWN : 1B

AVAILABLE COLORS :

1, 1B, 2, 27, 30, 33, 350, 4, 425, 51, 613, 950, M1B/30, M4/30

X-Pression®

3X BEACH CURL 14"



COLOR SHOWN : 2T1B/425

AVAILABLE COLORS :

1, 1B, 2, 4, 51, 613, 2T1B/27, 2T1B/30, 2T1B/350, 2T1B/425

- Made with Premium Synthetic Fiber
- Natural-Looking Texture
- Perfect for Twists, Faux Locs, Braids, and Crochet Styles
- Flame Retardant • Hot Water Setting



SMALL
10"



MEDIUM
10"



LARGE
10"



SMALL
20"



MEDIUM
20"



LARGE
20"

X-Pression®

Curlette™

100% TOYOKALON FIBER

Not your ordinary curl.

Created with ease and style in mind, Curlette is a new crochet braid made with the world-renowned X-Pression braiding hair texture. It takes the best part of gorgeous, voluminous curls and makes them even easier to wear. Explore the full range of curl styles, lengths, and colors.



PROTECTIVE STYLE



PRE-LOOPED



SOFT & LIGHT



TIME-SAVING



S
SMALL

CURLETTE SMALL 10"/20"

1, 1B, 2, 4, 27, 30, 950, 2T1B/27, 2T1B/30, 2T1B/BU

M
MEDIUM

CURLETTE MEDIUM 10"/20"

1, 1B, 2, 4, 27, 30, 950, 2T1B/27, 2T1B/30, 2T1B/BU

L
LARGE

CURLETTE LARGE 10"/20"

1, 1B, 2, 4, 27, 30, 950, 2T1B/27, 2T1B/30, 2T1B/BU

Mix & Match

- EASIEST MAINTENANCE
- LONG-LASTING WEAR
- SOFT & FLUFFY TEXTURE
- NATURAL SHEEN

X-PRESSION

CURLETTE



4X

X-Pression
Curlette
100% PREMIUM SYNTHETIC FIBER

X-PRESSION

CURLETTE



COLOR SHOWN : 3T4/27/613

COLOR SHOWN : 1B

COLOR SHOWN : 3T4/27/613

COLOR SHOWN : 2T1B/30

COLOR SHOWN : 1B

TWIST ROD SET 10"

DEEP ROD SET 8"

COIL ROD SET 8"

LOOSE SPIRAL ROD SET 8"

BOUNCE ROD SET 8"

AVAILABLE COLORS : 1, 1B, 2, 4, 950, 2T1B/27, 2T1B/30, 2T1B/BU, 3T4/27/613

3c-WHIRLY LOOP

4a-KINKY LOOP

4c-COILY LOOP

X-Pression®

For women that want fast styles and won't settle for less than excellent, X-Pression offers the best in crochet braids. These coily, whirly, kinky styles featuring crochet loops, not only look natural and beautiful, but are beyond easy to install.



COLOR SHOWN : 425



COLOR SHOWN : 950



COLOR SHOWN : 2



-  **3c** 3c-WHIRLY LOOP
-  **4a** 4a-KINKY LOOP
-  **4c** 4c-COILY LOOP



INNOVATIVE LOOP



FLAME RETARDANT



PERFECT PROTECTIVE STYLE

3C - WHIRLY LOOP | 4A - KINKY LOOP | 4C - COILY LOOP

AVAILABLE COLORS : 1, 1B, 2, 4, 27, 30, 425, 950, F1B/30, F4/30

CUEVANA BOUNCE

DEEP WAVE LOOP 14"

OCEAN WAVE LOOP 14"

WATER WAVE LOOP 14"



COLOR SHOWN: 2 + 350



COLOR SHOWN: 1B+BU



COLOR SHOWN: 1B



COLOR SHOWN: 950



CUEVANA BOUNCE

AVAILABLE COLORS :
1, 1B, 2, 4, 27, 30, 33, 34,
44, 51, 27, 30, 33, 34,
350, 613, 950, BU



INNOVATIVE LOOP
Easy to Loop & Lock



FLAME RETARDANT

DEEP WAVE LOOP 14" | OCEAN WAVE LOOP 14" | WATER WAVE LOOP 14"

AVAILABLE COLORS : 1, 1B, 2, 4, 27, 30, 425, 950, F1B/30, F4/30

- Quick, Long Lasting Protective Style
- Crochet Loop
- Soft Texture
- Lightweight
- Non Flammable
- Premium Synthetic Fiber



X-Pression®



Less time, more hair. With X-Pression's 4-in-1 Crochet, achieve 4x the volume in half the time. Designed with an innovative loop construction, each piece comes with 4 strands of hair that easily loop through, and lay smooth for a seamless finish. 4-in-1 Crochet offers the quickest install, endless styling versatility, and minimal maintenance.



KINKY CURL 14"



COLOR SHOWN: 950 + 27 + 30

JERRY CURL 14"



COLOR SHOWN : 1

DEEP TWIST 14"



COLOR SHOWN : 2

BOHEMIAN CURL 14"



COLOR SHOWN : 2 + 4

BAHAMAS CURL 14"



COLOR SHOWN : 1B + F1B/30



4-IN-1 CROCHET
1 Loop with 4 Strands



INNOVATIVE LOOP
Easy to Loop & Lock



FLAME RETARDANT

BAHAMAS CURL 14"
BOHEMIAN CURL 14"
DEEP TWIST 14"

AVAILABLE COLORS : 1, 1B, 2, 4, 27, 30, 425, 950, F1B/30, F4/30

JERRY CURL 14"
KINKY CURL 14"

AVAILABLE COLORS : 1, 1B, 2, 4, 27, 30, 425, 950, F1B/30, F4/30



45 Strands
BOX BRAID
 MEDIUM SIZE
 AVAILABLE LENGTHS
 14", 20", 26"
 LOW FRIZZ | WON'T UNRAVEL | LIGHT WEIGHT | CROCHET LOOP

STYLE SHOWN:
 BOX BRAID 20" MEDIUM



45, 90 Strands
SENEGAL TWIST
 MEDIUM SIZE
 AVAILABLE LENGTHS
 14", 20", 26"
 LOW FRIZZ | WON'T UNRAVEL | LIGHT WEIGHT | CROCHET LOOP

STYLE SHOWN:
 SENEGAL TWIST 20" MEDIUM

X-Pression®

X-Pression, the brand that braiders recognize around the world, has a line of crochet braids in classic Box Braid and Senegal Twist styles. Available in multiple lengths and sizes with natural tips, these crochet braids create beautiful, realistic finished looks. Explore endless styling possibilities with X-Pression.

- Made with Premium Synthetic Fiber
- Easy to Crochet
- Natural Tips
- Hot Water Setting
- Flame Retardant
- Crochet Loop



SENEGAL TWIST MEDIUM (45 STRANDS)
 14" : 1, 1B, 2, 27, 2T1B/27, 2T1B/30, 2T1B/350, 2T1B/425, 30, 4, 425
 20" : 1, 1B, 2, 27, 2T1B/27, 2T1B/30, 2T1B/350, 2T1B/425, 30, 350, 4, 425, 613, 950
 26" : 1, 1B, 2, 27, 2T1B/27, 2T1B/30, 2T1B/350, 2T1B/425, 350, 4, 613, 950

SENEGAL TWIST MEDIUM (90 STRANDS)
 14", 26" : 1, 1B, 2, 4

SENEGAL TWIST SMALL (45 STRANDS)
 20" : 1, 1B, 2, 4, 27, 30, 350, 425, 613, 950

SENEGAL TWIST SMALL (90 STRANDS)
 20" : 1, 1B, 2, 4

BOX BRAID MEDIUM (45 STRANDS)
 14", 20" : 1, 1B, 2, 27, 2T1B/27, 2T1B/30, 2T1B/350, 2T1B/425, 30, 350, 4, 425, 613, 950
 26" : 1, 1B, 2, 27, 2T1B/27, 2T1B/30, 2T1B/350, 2T1B/425, 30, 4, 425

X-Pression®

Natural Boho Loc 24"



COLOR SHOWN : PEACH BLONDE



100% Kanekalon®

Flame Retardant Fiber



AVAILABLE COLORS :
1, 1B, 2, CHAMPAGNE BLONDE, WHITE BLONDE, PEACH BLONDE

- 100% Kanekalon
- Easy to Crochet
- Natural Tips
- Hot Water Setting
- Flame Retardant
- Crochet Loop

X-Pression®

Natural Box Braid 24"



COLOR SHOWN : WHITE BLONDE

X-Pression®

BAHAMA LOCS 14" 18"



WAVY BAHAMA LOCS

STYLE & COLOR SHOWN : WAVY BAHAMA LOCS 18" | OM425

STRAIGHT BAHAMA LOCS

STYLE & COLOR SHOWN : STRAIGHT BAHAMA LOCS 18" | OM30 + OM425

AVAILABLE COLORS :

STRAIGHT BAHAMA LOCS 14" : 1, 1B, 2, 4, 51, 613, OM27, OM30, OM350, OM425

STRAIGHT BAHAMA LOCS 18" : 1, 1B, 2, 4, 51, 613, OM27, OM30, OM350, OM425, 3TONE ORANGE OMBRE, 3TONE WINE OMBRE, MIDNIGHT BLUE, MIDNIGHT PURPLE, MIDNIGHT GREEN

WAVY BAHAMA LOCS 14" : 1, 1B, 2, 4, 51, 613, OM27, OM30, OM350, OM425

WAVY BAHAMA LOCS 18" : 1, 1B, 2, 4, 51, 613, OM27, OM30, OM350, OM425, 3TONE ORANGE OMBRE, 3TONE WINE OMBRE, MIDNIGHT BLUE, MIDNIGHT PURPLE, MIDNIGHT GREEN

X-Pression®

KINKY BAHAMA LOCS 12"



STRAIGHT KINKY BAHAMA LOCS

COLOR SHOWN : 1B + OM27

WAVY KINKY BAHAMA LOCS

COLOR SHOWN : 1B + OM27

AVAILABLE COLORS :

STRAIGHT KINKY BAHAMA LOCS 12", WAVY KINKY BAHAMA LOCS 12" : 1, 1B, 2, 4, 51

- Made With Premium Synthetic Fiber
- Easy to Crochet
- Natural Tips
- Hot Water Setting
- Flame Retardant
- Crochet Loop





STYLE & COLOR SHOWN :
SPRINGY AFRO TWIST 30" | 1B

X-Pression
Twisted Up®

SPRINGY AFRO TWIST

100% KANEKALON FIBER



100% Kanekalon®

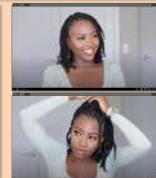


PRE-SEPARATED & PRE-FLUFFED

1 LOYAL FANS ARE CONSTANTLY FINDING NEW LOOKS TO TRY!



2 1M+ VIEWS AND STILL COUNTING, CHECK OUT THIS VIDEO!



X-Pression Twisted Up®



SCAN ME

3 PRE-SEPARATED & PRE-FLUFFED FOR EASY INSTALLATION



100% Kanekalon®



AVAILABLE LENGTHS & COLORS

SPRINGY AFRO TWIST 12" 2X : 1, 1B, 2, 4, 27, 30, 2T1B/27, 2T1B/30, 2T1B/350, 2T1B/425
 SPRINGY AFRO TWIST 16" 3X : 1, 1B, 2, 4, 27, 30, 350, 425, 950, 51, 613, 2T1B/27, 2T1B/30, 2T1B/350, 2T1B/425,
 2T1B/BLUE, 2T1B/PURPLE, 2T4/30, 2T99J/350, SUNKISS, SHERBERT, MERMAID, LATTE, HOTPINK, STRIKE,
 CARNIVAL, CHAMPAGNE AMBER, ORANGE SODA, SNOW BISCUIT
 SPRINGY AFRO TWIST 24" 3X : 1, 1B, 2, 4, 27, 30, 350, 2T1B/27, 2T1B/30, 2T1B/350, 2T1B/425, 2T1B/BLUE,
 2T1B/PURPLE, 2T4/30, 2T99J/350, HOTPINK

SPECIAL COLORS

