

FEBRUARY 2022

Outre®



BLONDES READY TO WEAR & DYE

STYLE SHOWN: HH-BLONDE BOB 12, HH-BLONDE BOB 10, HH-BLONDE BOB 14 (LEFT TO RIGHT)
COLOR SHOWN: AFTER COLORED, 613, AFTER COLORED (LEFT TO RIGHT)

Outre.
85 Oxford Drive,
Moonachie, NJ 07074
USA

IN THIS ISSUE

Whether your customers want a bold blonde bob that's ready to wear, or a pre-bleached wig that's ready to color, MyTresses Purple Label ColorMore is their perfect pick. ColorMore wigs let them skip the tricky bleaching steps, so they can wear platinum blonde wigs right away, or color them their way.

BRAID 03 WAVY BOMB TWIST 8" NEW COLORS	BRAID 04 DIY PRE-STRETCHED BRAID 50" 4X NEW COLORS	HH-YAKI 06 OUTRE'S HUMAN HAIR YAKI VELVET MYLK GEM PNY SASHA PREMIUM NEW YAKI PREMIUM PURPLE PACK	HH-U-PART WIG 08 HH-DOMINICAN STRAIGHT 14"
HH-LACE WIG 09 HH-NASHIRA HH-KRISTABEL GOLD LABEL Lace Front Wig	HH-FULL WIG 10 HH-BLONDE BOB 10" HH-BLONDE BOB 12" HH-BLONDE BOB 14" COLORMORE FULL WIG	HH-FULL WIG 12 HH-KIMI PURPLE LABEL FULL WIG	HH-LACE PART WIG 13 HH-W&W NATURAL DEEP 12" THE DAILY WIG 100% UNPROCESSED HUMAN HAIR LACE PART WIG
LACE BRAID WIG 14 BUTTERFLY BOMB TWIST 14" BUTTERFLY BOMB TWIST 24" BUTTERFLY PASSION TWIST 26" LACE FRONT BRAID WIG	LACE WIG 16 SOVEIDA melted HAIRLINE LACE FRONT WIG	LACE WIG 17 ELINA Lace front	FULL WIG 18 MIKI RIMA wigpop SYNTHETIC FULL WIG
CONVERTI-CAP 19 DREAMY BOUNCE CHARMING WAVES converti:cap	HALF WIG 20 NEESHA H303 NEESHA H304 NEESHA H305 Quick WEAVE NEESHA SOFT & NATURAL	PONYTAIL 22 DEEP TWIST CURL BUTTERFLY JUNGLE LOCS 20" Pretty Quick PREMIUM SYNTHETIC FIBER PONY	

WAVY BOMB TWIST 8"

X-Pression Lil LOOKS™

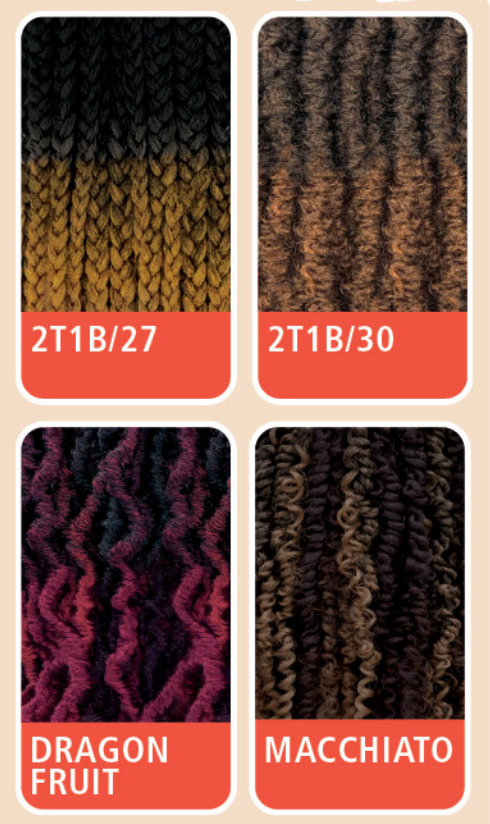
100% PREMIUM SYNTHETIC FIBER

Lil Looks offers the trendy Wavy Bomb Twist style in the perfect lengths and sizes for kids. It's easy to install for parents and comfortable to wear for little girls.

- Quick, Long-Lasting Protective Style
- Easy to Maintain & Manage
- Soft Texture & Lightweight
- Made with 100% Premium Synthetic Fiber



NEW COLORS



COLOR SHOWN : 1B

WAVY BOMB TWIST 8"

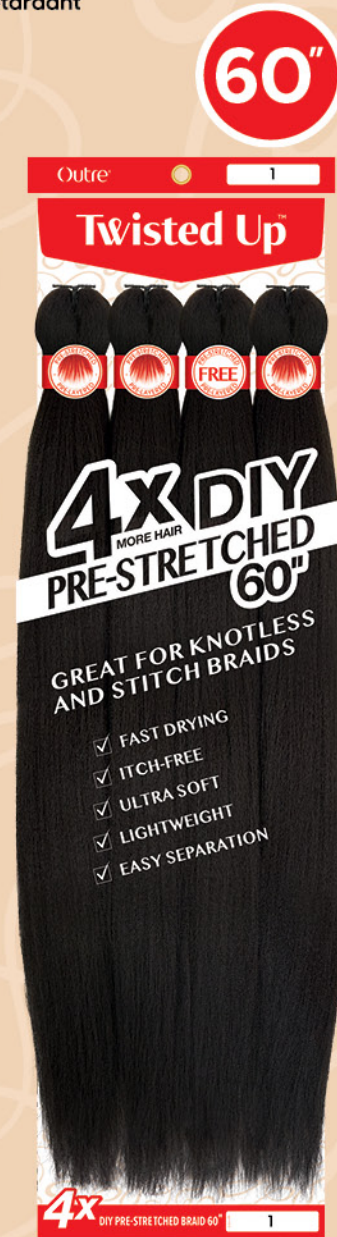
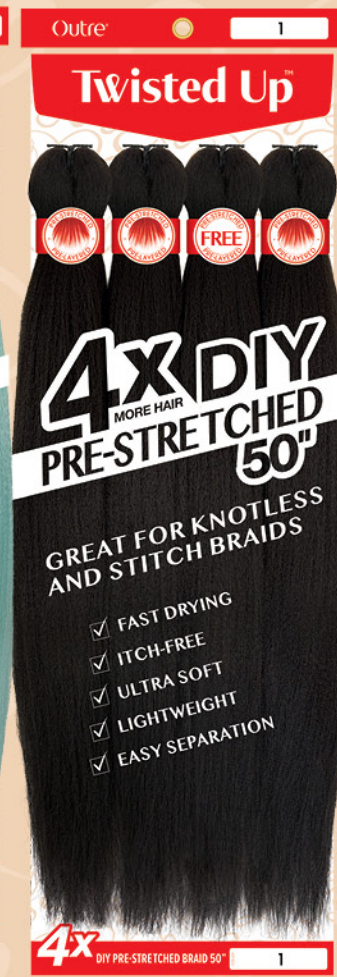
AVAILABLE COLORS:
1, 1B, 2, 4, 27, 30, 99J, 2T1B/27, 2T1B/30, BURGUNDY, DRAGON FRUIT, MACCHIATO

Twisted Up® DIY PRE-STRETCHED



Your customers are craving colorful braids in ultra long lengths. Give them 16 new colors of hip-grazing braiding hair in a convenient 4X package.

- Pre-Stretched for Quick Braiding
- Pre-Layered for Easy, Natural Layers
- Tangle Free
- Hot Water Setting Friendly
- Flame Retardant



DIY PRE-STRETCHED 4X 40"

AVAILABLE COLORS
1, 1B, 2, 4, 27, 30, 613, 2T1B/27, 2T1B/30, 2T1B/350, 2T1B/BURGUNDY, 2T1B/PURPLE

DIY PRE-STRETCHED 2X 50"

AVAILABLE COLORS
VIOLET, PUMPKIN SPICE, OCEAN SPLASH, HOT PINK, FUCHSIA, APPLE, MIDNIGHT, PURPLE, RED COPPER, ORANGE, GOLD, MINT

DIY PRE-STRETCHED 4X 50"

AVAILABLE COLORS
1, 1B, 2, 27, 2T1B/27, 2T1B/30, 2T1B/350, 2T1B/APPLE, 2T1B/BLUE, 2T1B/BURGUNDY, 2T1B/FUSCHSIA, 2T1B/GOLD, 2T1B/HOT PINK, 2T1B/MINT, 2T1B/OCEAN SPLASH, 2T1B/ORANGE, 2T1B/PUMPKIN SPICE, 2T1B/PURPLE, 2T1B/RED COPPER, 2T1B/VIOLET, 30, 3T/CHERRY, 3T/FUCHSIA, 3T/OCEAN MINT, 3T/PLUM, 3T/TANGERINE, 3T/VIOLET MINT, 4, 613

DIY PRE-STRETCHED 4X 60"

AVAILABLE COLORS
1, 1B, 2, 4, 2T1B/27, 2T1B/30, 2T1B/350, 2T1B/BURGUNDY, 2T1B/PURPLE

4x 50"

NEW COLORS



Outre®

Say yes to the legendary outre's human hair yaki line up ranging from Velvet Remi, Mylk, Gem, Sasha, PNY, Premium New Yaki to Premium Purple Pack, the reliable texture that blends better without compromising quality. Boost your sales with outre human hair yaki items during the peak tax season.



VELVET
REMI

mylk™

GEM™

PNY™
Premium New Yaki

SASHA™

Premium
New
Yaki™

premium
purple
pack



My[®]
TRESSES
100% UNPROCESSED HUMAN HAIR

GOLD LABEL

LEAVE OUT WIG

9+ QUALITY GRADE BUNDLE HAIR
BLEACH / DYE / CUSTOMIZE

Mytresses Gold Leave Out Wig creates an undetectable, lace-free hairline and part! This superior u-part wig line now features a new easy-to-blend Dominican Straight bob style for a finished look that anyone will believe it's your own natural hairstyle.



COLOR SHOWN : NATURAL BROWN



COLOR SHOWN : NATURAL BROWN



COLOR SHOWN : NATURAL BROWN

My[®]
TRESSES
100% UNPROCESSED HUMAN HAIR

GOLD LABEL

Lace Front Wig

9+ QUALITY GRADE BUNDLE HAIR
BLEACH / DYE / CUSTOMIZE

There are only two things wig-lovers want this winter and spring - flawless hairlines and fabulous styles. Pair them together with the new HH-Nashira and HH-Kristabel styles from MyTresses Gold Lace Front Wig.

- 100% Unprocessed Human Hair
- Bleach / Dye / Customize
- 9+ Quality Grade
- Fuller Density
- Natural Luster
- Long-Lasting Bundle Hair



HH-DOMINICAN STRAIGHT 14"

- 100% Unprocessed Human Hair
- Reveals Your Own Part for a Natural Look
- Narrower U-Part Opening for Less Leave Out
- Shiftable - Place the Part Anywhere
- Clips & Combs for Security
- Color & Customize - For optimal results, we suggest using the Natural Brown color
- Soft, Natural Luster
- Bacteria-Resistant Wig Cap



AVAILABLE COLORS : NATURAL BLACK, NATURAL BROWN

HH-NASHIRA



AVAILABLE COLORS : NATURAL BLACK, NATURAL BROWN

HH-KRISTABEL 22"





AFTER COLORED

COLOR SHOWN : 613 (TOP), AFTER COLORED (BOTTOM)



AFTER COLORED

COLOR SHOWN : 613 (TOP), AFTER COLORED (BOTTOM)



AFTER COLORED

COLOR SHOWN : 613 (TOP), AFTER COLORED (BOTTOM)

My TRESSES

100% HUMAN HAIR

PURPLE LABEL

COLORMORE

FULL WIG

Whether your customers want a blonde bob that's ready to wear, or a pre-bleached option that's ready to color, MyTresses Purple Label ColorMore is their perfect pick.

- 100% Unprocessed Human Hair
- Gorgeous Platinum Blondes
- Pre-Bleached & Ready-to-Dye
- Customize Effortlessly
- Soft, Natural Luster
- Easy to Style & Maintain



HH - BLONDE BOB 10"

HH - BLONDE BOB 12"

HH - BLONDE BOB 14"



AVAILABLE COLOR : 613

My[®] TRESSES

100% UNPROCESSED HUMAN HAIR

PURPLE LABEL

FULL WIG

BLEACH / DYE / CUSTOMIZE

Classic looks and customization comes together in this 100% Unprocessed Human Hair wig. HH-Kimi is a chic, finger wave style that is made to bleach, dye, and customize effortlessly.



COLOR SHOWN : NATURAL BROWN

HH - KIMI



AVAILABLE COLORS:
NATURAL BLACK, NATURAL BROWN



- 100% Unprocessed Human Hair
- Bleach, Color & Customize
- Soft, Natural Luster
- Easy to Style & Maintain



COLOR SHOWN : NATURAL BROWN

HH-W&W NATURAL DEEP 12"



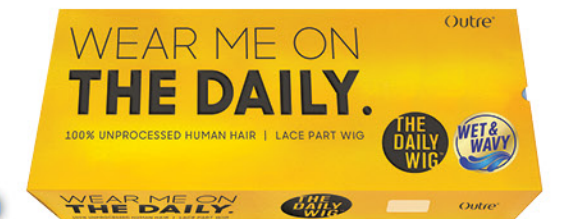
AVAILABLE COLORS:
NATURAL BLACK, NATURAL BROWN

- 100% Unprocessed Human Hair
- Hand-Tied Deep Lace Part
- Bleach & Dye Friendly
- Breathable Mesh Cap
- Voluminous & Full
- Elastic Band for Secure Fit



100% UNPROCESSED
HUMAN HAIR
LACE PART WIG

Wet & Wavy meets customization and an easy-to-wear construction with this new lace part unit from The Daily Wig. Stock up on the fan-favorite, "pop on and go" wig in Wet & Wavy Natural Deep 12".





COLOR SHOWN : 1B (TOP), DR BURGUNDY (BOTTOM)



COLOR SHOWN : 1B (TOP), DR4/2T27613 (BOTTOM)



COLOR SHOWN : 1B (TOP), 2T1B/30 (BOTTOM)

X-Pression Twisted Up®

LACE FRONT BRAID WIG

Your customers can skip the trip to the braiding salon with these new 4"x4" lace front wig options in Butterfly Twist styles. Give your shoppers fast, time-saving alternatives to pricey salon services.



BUTTERFLY BOMB TWIST 14"

BUTTERFLY BOMB TWIST 24"

BUTTERFLY PASSION TWIST 26"



- 4x4 Hand-Tied Lace Front
- Pre-Plucked Ear-to-Ear Lace
- Natural Baby Hair
- 100% Premium Synthetic Fiber

SPECIAL COLORS



AVAILABLE COLORS : 1, 1B, 2, 2T1B/30, DR BURGUNDY, DR1B/2T3027, DR4/2T27613

melted HAIRLINE

LACE FRONT WIG



DELUXE WIDE LACE PART

Outre's cult favorite wig collection, Melted Hairline, is back with a new style. Meet Soveida! She has an unbelievably real hairline and is available in a range of gorgeous, rich colors.

- Soft HD Transparent Lace
- Deluxe Wide Lace Part
- Pre-Plucked Hairline & Sideburns
- Pre-Attached Wide Elastic Band for a Secure Fit
- Redesigned ComfortFit Ear Contour
- Salon-Inspired Colors
- Natural Baby Hairs



COLOR SHOWN :
DRS COCOA/GINGER (MAIN)
DRS PLUM/BLONDE,
SS-BLACK/CHERRY
(BOTTOM LEFT TO RIGHT)



SOVEIDA 12"

AVAILABLE COLORS :

1, 1B, 2, 613, DR2/CINNAMON WINE, DR2/MAPLE BROWN, DR4/GOLDEN HONEY BLONDE, DRFF GOLDEN AMBER, SS BLACK/CHERRY, DRS PLUM/BLONDE, DRS COCOA/GINGER

SPECIAL COLORS



DR2/CINNAMON WINE, DR2/MAPLE BROWN, DR4/GOLDEN HONEY BLONDE, DRFF GOLDEN AMBER, SS BLACK/CHERRY, DRS PLUM/BLONDE, DRS COCOA/GINGER



Lace front

LACE FRONT WIG

Elina is Lacefront's newest style designed to be on-trend and natural-looking. This unit is perfect for Winter and Spring and comes in a range of beautifully blended colors.

- Ear to Ear Lace Front
- HD Transparent Lace
- Breathable, Comfortable Cap
- Natural Baby Hairs
- Premium Synthetic Fibers



COLOR SHOWN :
DRFF4/BUTTERED TOAST (LEFT)
430/PEEKA 3527 (RIGHT)

ELINA 16"



NATURAL BABY HAIRS

5" DEEP PARTING

AVAILABLE COLORS :

1, 1B, 2, 613, 430/PEEKA 3527, 425/PEEKA RED99J, 27613/PEEKA 30, DR4/GOLDEN HONEY BLONDE, DRFF GOLDEN AMBER, DRFF2/GINGER BROWN, DRFF4/BUTTERED TOAST

SPECIAL COLORS



430/PEEKA 3527, 425/PEEKA RED99J, 27613/PEEKA 30, DR4/GOLDEN HONEY BLONDE, DRFF GOLDEN AMBER, DRFF2/GINGER BROWN, DRFF4/BUTTERED TOAST

wigpop™

SYNTHETIC FULL WIG

With WIGPOP, new styles and trendy colors never stop! Meet Miki and Rima, the newest additions in a variety of rich colors for your customers who love to switch up their look.

- 100% Synthetic Fibers
- Range of Trendy Colors & Styles
- Great Value
- Ready to Wear & Go
- Heat-Styling Friendly



COLOR SHOWN : DR RED VELVET

COLOR SHOWN : DR4/GOLDEN HONEY BLONDE



MIKI

RIMA

SPECIAL COLORS



AVAILABLE COLORS

MIKI
1, 1B, 2, 613, S1B/30, DR CHAI LATTE, DR RED VELVET, DR2/CHOCOLATE SWIRL, DR2/HONEY BROWN, DR4/HONEY GOLD

RIMA
1, 1B, 2, 613, DR CHAI LATTE, DR GINGER TOFFEE, DR RED VELVET, DR2/CHOCOLATE SWIRL, DR4/GOLDEN HONEY BLONDE

converti-cap™

PREMIUM SYNTHETIC FIBER



COLOR SHOWN : DR CHOCOLATE CREAM (TOP), DR CHOCOLATE CREAM, 1B (BOTTOM LEFT TO RIGHT)

COLOR SHOWN : DR JAVA FROST (TOP), DR JAVA FROST, 1B (BOTTOM LEFT TO RIGHT)

Styles are truly limitless with Outre's Converti-Cap wigs. Wear these wavy styles up, down, pulled back into a pony, or with a cute scarf. These styles can be worn in so many ways!

- Limitless styling possibilities
- Reveal your own hairline for a realistic look
- Breathable and flexible cap that lays flat
- Adjustable drawstring for a custom fit
- Premium Synthetic Fibers
- Bacteria-Resistant Net



DREAMY BOUNCE

CHARMING WAVES

SPECIAL COLORS



AVAILABLE COLORS

DREAMY BOUNCE & CHARMING WAVES:
1, 1B, 2, DR CHOCOLATE CREAM, DR CHOCOLATE SWIRL, DR JAVA FROST, DR RED VELVET, DR2/GINGER BROWN, DR2/GOLDEN AMBER, DR2/GOLDEN HONEY BLONDE

Quick WEAVE.

NEESHA

SOFT & NATURAL

There's never enough Neesha options! Quick Weave has expanded its selection to include more colors and style in this insanely popular Soft & Natural texture.

- Natural Texture & Volume
- New Cap Lays Flatter
- High Heat Resistant Fiber
- Easy to Wear Styles
- Less Leave Out Required



COLOR SHOWN : DR GINGER BROWN (TOP), 1B (BOTTOM)



COLOR SHOWN : DR2/CHOCOLATE SWIRL (TOP), 1B (BOTTOM)



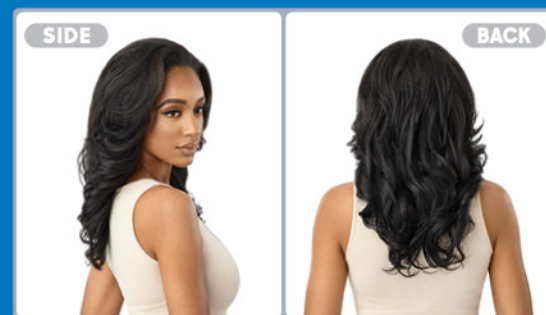
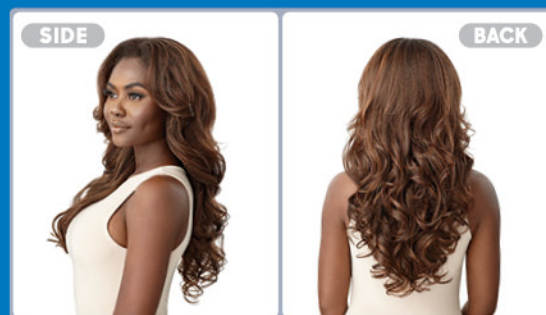
COLOR SHOWN : 1B (TOP), DR2/HONEY BROWN (BOTTOM)



NEESHA H303 28"

NEESHA H304 24"

NEESHA H305 18"



SPECIAL COLORS



AVAILABLE COLORS: 1, 1B, 2, DR GINGER BROWN, DR RED VELVET, DR2/CHOCOLATE SWIRL, DR2/HONEY BROWN, DR4/GOLDEN HONEY BLONDE

Pretty Quick™

PREMIUM SYNTHETIC FIBER

PONY

Get a pretty style fast! Pretty Quick's new Butterfly Jungle Locs style creates a ready-to-go look in a snap. Deep Twist Curl makes a natural & trendy ponytail style in no time.



COLOR SHOWN : 1B

BUTTERFLY JUNGLE LOCS 20" 20"



COLOR SHOWN : 1B (LEFT), DR2 GINGER BROWN (RIGHT)

DEEP TWIST CURL 12"



SPECIAL COLORS



CHOCOLATE SWIRL DRST HONEY BROWN DR2/CINNAMON WINE DR2/GINGER BROWN DR2/GOLDEN AMBER

AVAILABLE COLORS

BUTTERFLY JUNGLE LOCS 20"
1, 1B
DEEP TWIST CURL
1, 1B, 2, CHOCOLATE SWIRL, DRST HONEY BROWN,
DR2/CINNAMON WINE, DR2/GINGER BROWN, DR2/GOLDEN AMBER

- Great for High & Low Ponytails/Buns
- Salon Style Wrap Ponytail
- Bulk-Free Ponytail Base
- Quick and Easy Styling
- Lightweight
- Soft Feel & Natural Luster
- Made with Premium Synthetic Fiber

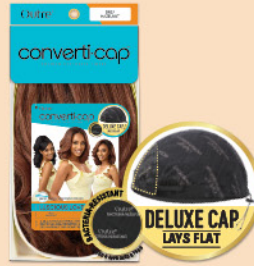


converti-cap™

PREMIUM SYNTHETIC FIBERS

FROM WIG TO PONY IN A FLASH

WITH PONYTAILS AND UPDOS, UNLOCK ENDLESS STYLES
WITH THE VERSATILE CONVERTI-CAP WIG.



LUSCIOUS LOVE

COLOR SHOWN : 1B
AVAILABLE COLORS : 1, 1B, 2, CHOCOLATE FROST,
DR BLACK CHERRY, DR2/27613, DR2/CINNAMON SPICE,
DR2/HAZELNUT, DR2/HONEY BROWN

TEAZY DOES IT

COLOR SHOWN : DR2/CHOCOLATE SWIRL
AVAILABLE COLORS : 1, 1B, 2, S1B/30, DR CHAI LATTE,
DR GINGER TOFFEE, DR RED VELVET, DR2/CHOCOLATE
SWIRL, DR2/GOLDEN AMBER, HT TWILIGHT GRAY,
FF MIDNIGHT GRAY, DX MOONSTONE GRAY



COLOR SHOWN : 1B

DIVINE JEWELRY

AVAILABLE COLORS : 1, 1B, 2, CHOCOLATE FROST, DR BLACK CHERRY, DR2/CINNAMON SPICE,
DR2/GOLDEN HONEY BLONDE, DR2/MISTY SMOKE GRAY, DR2/HONEY BROWN,
DX POLAR GRAY, DX MISTY SMOKE GRAY, HT MIDNIGHT GRAY



COLOR SHOWN : DR RED VELVET

HONEY BUNCHES

AVAILABLE COLORS : 1, 1B, 2, 4, 2T/30, S1B/30, DR RED VELVET, DR2/GINGER BROWN,
DR2/HONEY BROWN, DR2/GOLDEN HONEY BLONDE



COLOR SHOWN : DR RED VELVET

LADY LIONESS

AVAILABLE COLORS : 1, 1B, 2, DR CHAI LATTE, DR GINGER TOFFEE, DR RED VELVET, DR2/CHOCOLATE SWIRL,
DR2/GOLDEN HONEY BLONDE, HT TWILIGHT GRAY, DX MOONSTONE GRAY, DX SILVER BROWN



COLOR SHOWN : 1B

MAMA MAJESTY

AVAILABLE COLORS : 1, 1B, 2, DR CHAI LATTE, DR GINGER TOFFEE, DR RED VELVET, DR2/CHOCOLATE SWIRL,
DR2/GOLDEN HONEY BLONDE, HT TWILIGHT GRAY, FF MIDNIGHT GRAY, DX MISTY SMOKE GRAY



COLOR SHOWN : DR2/27613

VIVA LAVIDA

AVAILABLE COLORS : 1, 1B, 2, DR2/27613, DR CHOCOLATE SWIRL, DR RED VELVET,
DR2/CINNAMON WINE, DR2/GINGER BROWN, DR2/GOLDEN AMBER



COLOR SHOWN : 1B

VELVETY SWIRLS

AVAILABLE COLORS : 1, 1B, 2, TWILIGHT GRAY, DX MISTY GRAY, ST BROWN GRAY, DR CHOCOLATE SWIRL,
DR COPPER ORANGE, DR RED VELVET, DR2/CREAMY TOFFEE, DR2/GINGER BROWN,
DR2/GOLDEN AMBER, DR2/GOLDEN HONEY BLONDE



COLOR SHOWN : 1B

ROSEY WAVES

AVAILABLE COLORS : 1, 1B, 2, DR CHAI LATTE, DR GINGER TOFFEE, DR RED VELVET, DR2/CHOCOLATE SWIRL,
DR2/GOLDEN HONEY BLONDE, HT TWILIGHT GRAY, FF MIDNIGHT GRAY, DX SILVER BROWN



COLOR SHOWN : 1B

POPPIN CURLS

AVAILABLE COLORS : 1, 1B, 2, MACCHIATO, DR2/CINNAMON WINE, DR2/GINGER BROWN,
DR2/GOLDEN AMBER, DR2/GOLDEN HONEY BLONDE, DR2 DRAGON FRUIT