

# Outre®

APRIL 2022



STYLE & COLOR SHOWN :  
INANNA/DRSD SIENNA COPPER (LEFT), LEVANA/DRSD CHERRY BOMB (RIGHT)

F A C E  
FRAMING  
SPLIT DYE



Outre  
85 Oxford Drive,  
Moonachie, NJ 07074  
USA

**SAY HI TO SPLIT-DYE,  
GORGEOUS, UNIQUE  
MULTI-TONE COLORS**

# IN THIS ISSUE

Customers crave new colors and COLORBOMB's got it! Our newest styles come together with salon-designed, face framing split dye colors that takes wigs to a whole new level. For customers that are constantly craving new looks, COLORBOMB is the line they're sure to fall in love with.

<b>BRAID</b> 03 X-Pression <b>Twisted Up</b> SPRINGY AFRO TWIST	<b>BRAID</b> 04 X-Pression <b>Twisted Up</b> WATERWAVE FRO TWIST, SUPER LONG 3X	<b>BRAID</b> 06 X-Pression <b>Twisted Up</b> BUTTERFLY JUNGLE BOX BRAID 12" 2X BUTTERFLY JUNGLE BOX BRAID 20" BUTTERFLY JUNGLE BOX BRAID 24" BUTTERFLY JUNGLE ROSE BRAID 18" 2X BUTTERFLY JUNGLE SENEGAL TWIST 12" 2X BUTTERFLY JUNGLE SENEGAL TWIST 18" BUTTERFLY JUNGLE ISLAND SUMMER LOCS 18"	<b>BRAID</b> 08 X-Pression <b>Twisted Up</b> BOHO KINKY PASSION WATERWAVE 24" BONITA BOHO CRUSH LOCS 20" BOHO PASSION WATERWAVE 24" BOHO WAVY BOMB TWIST
<b>HH-LACE WIG</b> 10 My TRESSES 13"x4" LACEFRONTAL WIG	<b>HH-LACE WIG</b> 11 My TRESSES Lace Front Wig	<b>HH-U-PART WIG</b> 12 My TRESSES LEAVE OUT WIG	<b>HH-LACE PART WIG</b> 14 THE DAILY WIG LACE PART WIG
<b>HH-FULL WIG</b> 15 Fab & Fly color queen	<b>LACE WIG</b> 16 PERFECT HAIRLINE	<b>LACE WIG</b> 18 melted HAIRLINE	<b>LACE WIG</b> 19 SleekLay Part
<b>LACE WIG</b> 21 COLOR BOMB	<b>LACE WIG</b> 22 EveryWear	<b>FULL WIG</b> 24 wigpop	<b>FULL WIG</b> 26 wigpop
<b>CONVERTI-CAP</b> 28 converti-cap	<b>PONYTAIL</b> 30 Outre Pretty Quick	<b>PONYTAIL</b> 31 Pretty Quick	

X-Pression  
**Twisted Up**  
**SPRINGY AFRO TWIST**

PRE-SEPARATED & PRE-FLUFFED

**1 LOYAL FANS ARE CONSTANTLY FINDING NEW LOOKS TO TRY!**

**2 1M+ VIEWS AND STILL COUNTING, CHECK OUT THIS VIDEO!**

**AVAILABLE LENGTHS & COLORS**

SPRINGY AFRO TWIST 12" 2X : 1, 1B, 2, 4, 27, 30, 2T1B/27, 2T1B/30, 2T1B/350, 2T1B/425  
 SPRINGY AFRO TWIST 16" 3X : 1, 1B, 2, 4, 27, 30, 350, 425, 950, 51, 613, 2T1B/27, 2T1B/30, 2T1B/350, 2T1B/425, 2T1B/BLUE, 2T1B/PURPLE, 2T4/30, 2T99J/350, SUNKISS, SHERBERT, MERMAID, LATTE, HOTPINK, STRIKE, CARNIVAL, CHAMPAGNE AMBER, ORANGESODA, SNOW BISCUIT  
 SPRINGY AFRO TWIST 24" 3X : 1, 1B, 2, 4, 27, 30, 350, 2T1B/27, 2T1B/30, 2T1B/350, 2T1B/425, 2T1B/BLUE, 2T1B/PURPLE, 2T4/30, 2T99J/350, HOTPINK

**SPECIAL COLORS**

**3 PRE-SEPARATED & PRE-FLUFFED FOR EASY INSTALLATION**

100% Kanekalon  
Flame Retardant Fiber

TWISTED UP - WATERWAVE FRO TWIST STYLE

**“100% Kanekalon Fiber Pre-Separated into 3 Pieces”**

**“Tangle-Free for Easy Installation & Pre-Fluffed for Faster Installation”**

**“Human Hair Like Sheen made with 100% Kanekalon”**

**1 THE MOST CONVENIENT BRAIDING HAIR**

**2 THE BEST VALUE BRAIDING HAIR**

**3 THE MOST NATURAL LOOKING BRAIDING HAIR**

WATERWAVE FRO TWIST 22"

**“Finished Styles Do Not Unravel and Look Polished”**

**“Soft On Skin & Ultra Lightweight”**

**4 THE MOST STYLISH BRAIDING HAIR**

**5 THE SAFEST BRAIDING HAIR**



X-Pression  
**Twisted Up**  
**WATERWAVE FRO TWIST**  
**SUPER LONG 3X**

100% KANEKALON FIBER



**LIGHTWEIGHT**

**WATERWAVE FRO TWIST 22" AVAILABLE COLORS**

1, 1B, 2, 4, 51, 613, 2T1B/27, 2T1B/30, MACCHIATO, DRAGON FRUIT

**WATERWAVE FRO TWIST SUPER LONG AVAILABLE COLORS**

1, 1B, 2, 4, 27, 30, 51, 425, 613, 2T1B/27, 2T1B/30, MACCHIATO, DRAGON FRUIT, BLUE, PURPLE, RED, HOT PINK



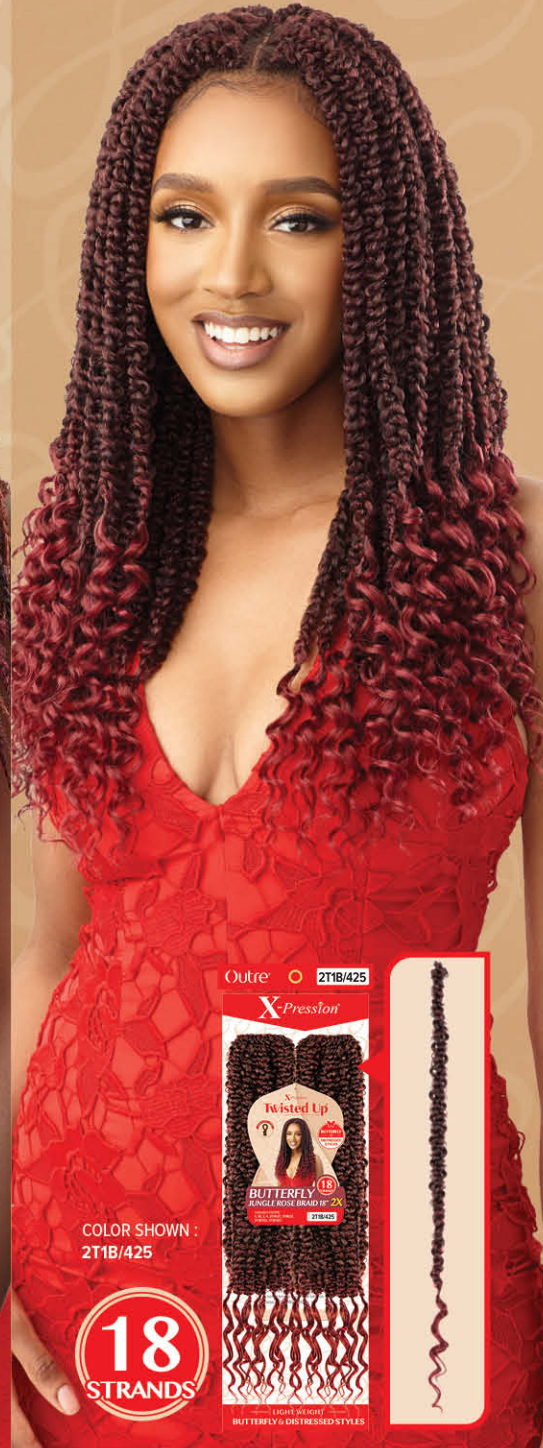
COLOR SHOWN : DRAGON FRUIT

18 STRANDS



COLOR SHOWN : DRAGON FRUIT  
STYLE SHOWN : BUTTERFLY JUNGLE BOX BRAID 20"

12 STRANDS



COLOR SHOWN : 2T1B/425

18 STRANDS



COLOR SHOWN : 2T1B/30

BUTTERFLY JUNGLE SENEGAL TWIST 18"

COLOR SHOWN : 2T1B/30

18 STRANDS



COLOR SHOWN : PRISM

12 STRANDS



X-Pression  
**Twisted Up**  
100% PREMIUM SYNTHETIC FIBER  
**JUNGLE STYLES**



JUNGLE LOOKS PRE-STYLED WITH THE LEGENDARY X-PRESSION PRE-STRETCHED & LONG-LASTING WATERWAVE FRO TWIST

Give your customers exactly what they want – fast Jungle styles in braids and twists pre-styled with the legendary X-Pression® Pre-Stretched and Long-lasting Twisted Up® Waterwave Fro Twist!



**BUTTERFLY JUNGLE BOX BRAID 12" 2X** **NEW**

**BUTTERFLY JUNGLE BOX BRAID 20" / 24" 2X** **NEW**

**BUTTERFLY JUNGLE ROSE BRAID 18" 2X**

**BUTTERFLY JUNGLE SENEGAL TWIST 12" 2X** **NEW**

**BUTTERFLY JUNGLE ISLAND SUMMER LOCS 18" 2X** **NEW**

AVAILABLE COLORS

- BUTTERFLY JUNGLE BOX BRAID 12" 2X : 1, 1B, 2, 4, 2T1B/27, 2T1B/30, MACCHIATO, DRAGON FRUIT
- BUTTERFLY JUNGLE BOX BRAID 20" : 1, 1B, 2, 4, 2T1B/27, 2T1B/30, MACCHIATO, DRAGON FRUIT
- BUTTERFLY JUNGLE BOX BRAID 24" : 1, 1B, 2, 4, 2T1B/27, 2T1B/30, MACCHIATO, DRAGON FRUIT
- BUTTERFLY JUNGLE ROSE BRAID 18" 2X : 1, 1B, 2, 4, 2T1B/27, 2T1B/30, 2T1B/350, 2T1B/425
- BUTTERFLY JUNGLE SENEGAL TWIST 12" 2X : 1, 1B, 2, 4, 2T1B/27, 2T1B/30, MACCHIATO, DRAGON FRUIT
- BUTTERFLY JUNGLE SEBEGAL TWIST 18" : 1, 1B, 2, 4, 2T1B/27, 2T1B/30, MACCHIATO, DRAGON FRUIT
- BUTTERFLY JUNGLE ISLAND SUMMER LOCS 18" : 1, 1B, 2, 4, 613, PRISM, MACCHIATO, DRAGON FRUIT

SPECIAL COLORS



2T1B/27

2T1B/30

2T1B/350

2T1B/425

MACCHIATO

DRAGON FRUIT

PRISM

X-Pression  
**Twisted Up**  
100% PREMIUM SYNTHETIC FIBER  
**BOHO STYLES**

Customers can create unique Boho looks by mixing and matching styles or keep it simple by using just one. Imagine the possibilities with Twisted Up's Boho crochet lineup!



**BOHO KINKY PASSION WATERWAVE 24"**

**BONITA BOHO CRUSH LOCS 20"**

**BOHO PASSION WATERWAVE 24"**

**BOHO WAVY BOMB TWIST 20"**

**AVAILABLE COLORS**

- BOHO KINKY PASSION WATERWAVE 24" : 1, 1B, 2, 4, 2T1B/27, 2T1B/30, 2T1B/350, 2T1B/425, WHITE BLONDE, PEACH BLONDE
- BONITA BOHO CRUSH LOCS 20" : 1, 1B, 2, 4, 2T1B/27, 2T1B/30, 2T1B/425
- BOHO PASSION WATERWAVE 24" : 1, 1B, 2, 4, 2T1B/27, 2T1B/30, 2T1B/350, 2T1B/425, WHITE BLONDE, PEACH BLONDE
- BOHO WAVY BOMB TWIST 20" : 1, 1B, 2, 4, 425, 51, 613, 950, 2T1B/27, 2T1B/30, 2T1B/350, 2T1B/425

**SPECIAL COLORS**



# My<sup>®</sup> TRESSES

PREMIUM 100% UNPROCESSED HUMAN HAIR

**BLACK LABEL**

**10+ QUALITY GRADE**  
**BLEACH / DYE / CUSTOMIZE**

Get 26" of luxurious straight hair on a 13"x4" lace frontal from MyTresses Black Label. This natural unprocessed human hair wig can be dyed with ease and parted however customers please.



**13" x 4"**  
LACE FRONTAL WIG



COLOR SHOWN : NATURAL BROWN

## HH-VIRGIN STRAIGHT 26"



- 100% Premium Unprocessed Human Hair
- Hand-Tied 13" x 4" Lace Frontal
- HD+ Transparent Lace
- Bleach/Dye/Customize
- 3 Pre-Attached Combs for a Secure Fit



AVAILABLE COLORS : NATURAL BLACK, NATURAL BROWN



COLOR SHOWN : NATURAL BROWN

## HH-ANTOINETTE 22"



AVAILABLE COLORS : NATURAL BLACK, NATURAL BROWN

- 100% Unprocessed Human Hair
- Natural Luster
- HD Transparent Lace
- Bleach / Dye / Customize
- Fuller Density
- Long-Lasting Bundle Hair

# My<sup>®</sup> TRESSES

100% UNPROCESSED HUMAN HAIR

**GOLD LABEL**

*Lace Front Wig*

**9+ QUALITY GRADE BUNDLE HAIR**  
**BLEACH / DYE / CUSTOMIZE**

It's Spring, and no style is more perfect for warm weather and selfies than HH-Antoinette's gorgeous waves.



*My*<sup>®</sup>  
TRESSES  
100% UNPROCESSED HUMAN HAIR

GOLD LABEL

LEAVE OUT WIG

9+ QUALITY GRADE BUNDLE HAIR  
BLEACH / DYE / CUSTOMIZE

We brought easy-to-blend, soft waves, afros, and textured straight styles together with an undetectable, U-Part cap construction to create a natural look.



\*\* USE PERM RODS TO CURL & BLEND YOUR HAIR.



COLOR SHOWN : NATURAL BROWN



COLOR SHOWN : NATURAL BROWN



COLOR SHOWN : NATURAL BROWN

**HH-LOOSE DEEP 20"**

**HH-DOMINICAN STRAIGHT 20"**

**HH-NATURAL AFRO**



SIDE BACK

AVAILABLE COLORS :  
NATURAL BLACK, NATURAL BROWN



SIDE BACK

AVAILABLE COLORS :  
NATURAL BLACK, NATURAL BROWN



SIDE BACK

AVAILABLE COLORS :  
NATURAL BLACK, NATURAL BROWN

- 100% Unprocessed Human Hair
- Reveals Your Own Part for a Natural Look
- Narrower U-Part Opening for Less Leave Out
- Shiftable - Place the Part Anywhere
- Clips & Combs for Security
- Color & Customize - For optimal results, we suggest using the Natural Brown color
- Soft, Natural Luster
- Bacteria-Resistant Wig Cap





100% UNPROCESSED HUMAN HAIR LACE PART WIG

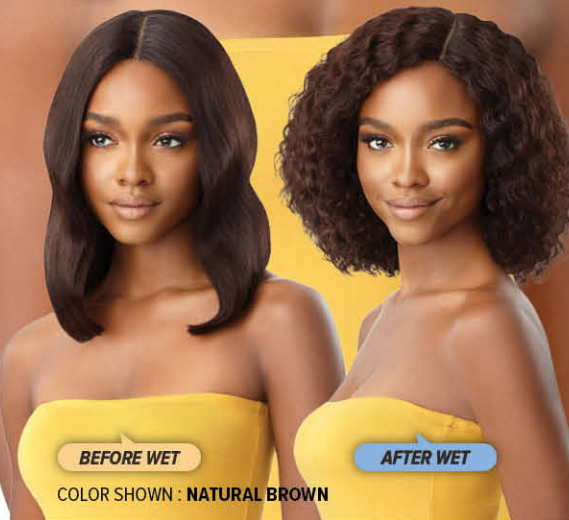
Wear new Wet & Wavy styles the easy way with The Daily Wig that features a pop-on-and-go lace part construction and 100% human hair.



12"



14"



BEFORE WET

AFTER WET

COLOR SHOWN : NATURAL BROWN



BEFORE WET

AFTER WET

COLOR SHOWN : NATURAL BROWN

## HH-W&W NATURAL DEEP 12" & 14"



- 100% Unprocessed Human Hair
- Hand-Tied Lace Part
- Bleach & Dye Friendly
- Breathable Mesh Cap
- Voluminous & Full
- Elastic Band for Secure Fit



SIDE

BACK



SIDE

BACK

AVAILABLE COLORS : NATURAL BLACK, NATURAL BROWN

Fab & Fly™  
100% HUMAN HAIR

color queen



SIDE

BACK

COLOR SHOWN : DX GOLD RUSH (MAIN), NATURAL BROWN, DR SANDY BLONDE (BOTTOM LEFT TO RIGHT)



HH-Sofina is our new curly cut pre-colored in a variety of options for our customers' convenience. Choose a classic color or something unexpected - the hue is up to you!

## HH-SOFINA

AVAILABLE COLORS



NATURAL BLACK

NATURAL BROWN

DR SANDY BLONDE

DX GOLD RUSH

DX CHERRY ROUGE

DX MIDNIGHT BLUE

DX MIDNIGHT PURPLE

DX STONE GRAY

AVAILABLE COLORS : NATURAL BLACK, NATURAL BROWN, DR SANDY BLONDE, DX GOLD RUSH, DX CHERRY ROUGE, DX MIDNIGHT BLUE, DX MIDNIGHT PURPLE, DX STONE GRAY

- 100% Human Hair
- Breathable Mesh Cap
- Comfortable & Secure Fit
- Voluminous & Full
- Easy-to-Wear & Style





# PERFECT HAIRLINE™

FULLY HAND-TIED LACE WIG



Lace Frontal, Perfect Hairline 13x6's newest straight, wavy and curly styles feature plenty of lace, length, and premium color options!

- Fully Hand-Tied 13" x 6" and 13" x 4" Frontal
- Ear-to-Ear Soft HD Transparent Lace
- Pre-Plucked Hairline with Natural Baby Hairs
- Pre-Attached Elastic Band
- Heat-Styling Friendly



COLOR SHOWN :  
DR CHERRY CRUSH (MAIN)  
DR JAVA FROST, 1B (BOTTOM LEFT TO RIGHT)



**LISSIE 13" X 4" 12"**



COLOR SHOWN :  
DR2/BUTTERED PECAN (MAIN)  
DR4/GOLDEN HONEY BLONDE, DRFF2/GINGER BROWN  
(BOTTOM LEFT TO RIGHT)



**EVERETTE 13" X 6" 26"**



COLOR SHOWN :  
DRFF2/GINGER BROWN (MAIN)  
27, 1B (BOTTOM LEFT TO RIGHT)



**BEXLEY 13" X 6" 28"**



COLOR SHOWN :  
DRFF6/HONEY OVER CHOCOLATE (MAIN)  
DRST MAPLE BROWN, 3DRFF CAJUN SPICE  
(BOTTOM LEFT TO RIGHT)



**FREYA 13" X 6" 22"**

AVAILABLE COLORS :

**LISSIE** : 1, 1B, 2, 613, DR CHERRY CRUSH, DR CHOCOLATE SWIRL, DR JAVA FROST, DR4/GOLDEN HONEY BLONDE, 3DRFF CAJUN SPICE

**EVERETTE** : 1, 1B, 2, 613, DR CHOCOLATE SWIRL, DR2/BUTTERED PECAN, DR4/SANDY BLONDE, DR4/GOLDEN HONEY BLONDE, DRFF RED VELVET, DRFF2/GINGER BROWN, DRFF4/BUTTERED TOAST

**BEXLEY** : 1, 1B, 2, 27, 613, CHOCOLATE SWIRL, CINNAMON WINE, DR RED VELVET, DR4/GOLDEN HONEY BLONDE, DRFF GOLDEN AMBER, DRFF2/GINGER BROWN, DRFF4/BUTTERED TOAST

**FREYA** : 1, 1B, 2, 613, DR4/GOLDEN HONEY BLONDE, DRST MAPLE BROWN, DRFF GOLDEN AMBER, DRFF RED VELVET, DRFF6/HONEY OVER CHOCOLATE, 3DRFF CAJUN SPICE

SPECIAL COLORS



# melted HAIRLINE®

LACE FRONT WIG

Mariella is our newest curly look from Melted Hairline. This unit is available in an assortment of stunning shades and includes HD lace and Frontal Effect lace front construction for a natural-look.

- Soft, Ear-to-Ear HD Transparent Lace
- Great for Slicked Back Styles
- 5" Deep Parting
- Completely Pre-Plucked Hairline & Sideburns
- Pre-Attached Wide Elastic Band for a Secure Fit
- Natural Baby Hairs
- Redesigned ComfortFit Ear Contour



COLOR SHOWN : DRFF GOLDEN AMBER (MAIN)  
DR COPPER BROWN, DR JAVA DROST (BOTTOM LEFT TO RIGHT)



## MARIELLA 18"

AVAILABLE COLORS :

**MARIELLA** : 1, 1B, 2, 613, DR CHOCOLATE SWIRL, DR COPPER BROWN, DR JAVE FROST, DR4/GOLDEN HONEY BLONDE, DRFF GOLDEN AMBER, DRFF RED VELVET

### SPECIAL COLORS



# SleekLay® Part

LACE FRONT WIG Part

Asmara features mesmerizing waves with a part designed with more lace to create a flat, ultra-realistic look.

- Wider Hand-Tied Lace Part
- Extra Hand-Tied Lace Edges
- Pre-plucked Hairline
- Natural Baby Hairs
- Hump-less, Laid finish
- Heat-Friendly



COLOR SHOWN : DR4/HONEY BLONDE (LEFT)  
CHOCOLATE FROST (RIGHT)



## ASMARA 26"

AVAILABLE COLORS :

1, 1B, 2, 613, CHOCOLATE FROST, DR2/CINNAMON SPICE, DR2/HAZELNUT, DR4/HONEY BLONDE, DRFF BLACK CHERRY, 3DRFF AMBER BLONDE



### SPECIAL COLORS





**KIANDA**

**26"**

DRSD CHOCOLATE CARAMEL

DRSD SIENNA COPPER

DRSD CHERRY BOMB

DRSD SUNFIRE NIGHT

DRSD IVORY BLONDE

AVAILABLE COLORS :

1, 1B, DRSD CHERRY BOMB, DRSD CHOCOLATE CARAMEL, DRSD IVORY BLONDE, DRSD SIENNA COPPER, DRSD SUNFIRE NIGHT



**COLOR BOMB™**

PREMIUM SYNTHETIC FIBERS

These face-framing split dye colors are absolute stunners. These new shades put a new spin on classic straight styles, trendy crimps and soft waves to deliver a new daring look.

- Exclusive Split Dye Colors
- Premium Synthetic Fibers
- Selfie-Worthy Styles

**FACE FRAMING SPLIT DYE**



- ✓ 5" DEEP LACE PARTING
- ✓ NATURAL BABY HAIRS
- ✓ PRE-PLUCKED HD LACE

**INANNA**

**24"**

COLOR SHOWN  
DRSD CHOCOLATE CARAMEL (LEFT)  
DRSD IVORY BLONDE (RIGHT)



**LEVANA**

**22"**

DRSD CHOCOLATE CARAMEL

DRSD SIENNA COPPER

DRSD CHERRY BOMB

DRSD SUNFIRE NIGHT

DRSD IVORY BLONDE

AVAILABLE COLORS :

1, 1B, DRSD CHERRY BOMB, DRSD CHOCOLATE CARAMEL, DRSD IVORY BLONDE, DRSD SIENNA COPPER, DRSD SUNFIRE NIGHT



DRSD CHOCOLATE CARAMEL

DRSD SIENNA COPPER

DRSD CHERRY BOMB

DRSD SUNFIRE NIGHT

DRSD IVORY BLONDE

AVAILABLE COLORS :

1, 1B, DRSD CHERRY BOMB, DRSD CHOCOLATE CARAMEL, DRSD IVORY BLONDE, DRSD SIENNA COPPER, DRSD SUNFIRE NIGHT



Lace<sup>™</sup>  
Front

# EveryWear<sup>™</sup>

LACE FRONT WIG

Introducing new short cuts in curly and sleek styles available from EveryWear. These affordable lace wigs are made to wear every day and flatter every woman.

- Ear-to-Ear HD Lace
- Easy, Goes-with-Everything Styles
- High Heat Resistant Fiber
- Premium Synthetic Fiber

COLOR SHOWN :  
DR4/FROSTED HONEY BROWN (TOP)  
DRFF2/GINGER BROWN (BOTTOM)



**EVERY18** 10"

COLOR SHOWN :  
DR2/CINNAMON WINE (TOP)  
DRST2/CHOCOLATE CARAMEL (BOTTOM)



**EVERY19** 10"

COLOR SHOWN :  
DR CHOCOLATE SWIRL (LEFT)  
STRAWBERRY BLONDE (RIGHT)



**EVERY20** 16"



AVAILABLE COLORS :

**EVERY18** : 1, 1B, 2, 613, CHOCOLATE SWIRL, DR2/CINNAMON WINE, DR4/FROSTED HONEY BROWN, DR4/GOLDEN HONEY BLONDE, DR4/SANDY BLONDE, DRFF GOLDEN AMBER, DRFF2/GINGER BROWN

**EVERY19** : 1, 1B, 2, 613, CHOCOLATE SWIRL, DR2/CINNAMON WINE, DR2/GINGER BROWN, DR2/GOLDEN AMBER, DRST2/CHOCOLATE CARAMEL, DR4/GOLDEN HONEY BLONDE, DR4/SANDY BLONDE

**EVERY20** : 1, 1B, 2, 613, HAVANA BROWN, STRAWBERRY BLONDE, DR CHOCOLATE SWIRL, DRST2/CHOCOLATE CARAMEL, DR4/GOLDEN HONEY BLONDE, DRFF RED VELVET, DRFF2/GINGER BROWN

SPECIAL COLORS



wigpop™

SYNTHETIC FULL WIG

Wow your customers with WIGPOP's newest styles. Choose Brett's chic and short cut; Jasmiyah's soft, voluminous curls; or Bowie's feathered bob and wispy bang.

- Range of Trendy Colors & Styles
- Great Value
- Ready to Wear & Go
- Heat-Styling Friendly
- 100% Synthetic Fibers



COLOR SHOWN: DR GINGER BROWN



**BOWIE** 12"



COLOR SHOWN: DR RED VELVET



**BRETT**



COLOR SHOWN: DR GINGER BROWN



**JASMIYAH** 20"



AVAILABLE COLORS :

**BOWIE, BRETT, :** 1, 1B, 2, 613, DR GINGER BROWN, DR RED VELVET, DR2/CHOCOLATE SWIRL, DR2/HONEY BROWN, DR4/GOLDEN HONEY BLONDE

**JASMIYAH :** 1, 1B, 2, DR GINGER BROWN, DR HONEY AUBURN, DR RED VELVET, DR2/CHOCOLATE SWIRL, DR4/GOLDEN HONEY BLONDE

SPECIAL COLORS



wigpop™

SYNTHETIC FULL WIG

Find the perfect wig with WIGPOP. This lineup of ready-to-wear looks has a new layered bob; razor cut pixie; and trendy, 70s-inspired style.

- Range of Trendy Colors & Styles
- Great Value
- Ready to Wear & Go
- Heat-Styling Friendly
- 100% Synthetic Fibers



COLOR SHOWN: DR4/STRAWBERRY GOLD



**MERIDA** 14"



COLOR SHOWN: DR JADE BLUE (TOP), CHOCOLATE SWIRL (BOTTOM)



**LACEY**



COLOR SHOWN: DR2/GOLDEN BALAYAGE



**FIDELIA** 28"



AVAILABLE COLORS :

**MERIDA** : 1, 1B, 2, 613, DR GINGER TOFFEE, DR RED VELVET, DR2/HONEY BROWN, DR2/CHOCOLATE SWIRL, DR4/STRAWBERRY GOLD

**LACEY** : 1, 1B, 2, CHOCOLATE SWIRL, CREAM SODA, GINGER BROWN, GOLDEN AMBER, DR COPPER ORANGE, DR JADE BLUE, DR RED VELVET

**FIDELIA** : 1, 1B, 2, 613, DR CHERRY WINE, DR GINGER COPPER BALAYAGE, DR HAZELNUT BROWN, DR MILK CHOCOLATE, DR2/GOLDEN BALAYAGE, DR2/BL SANDY BLONDE

SPECIAL COLORS





COLOR SHOWN : DR2/HONEY BROWN (TOP),  
1B, DR GINGER TOFFEE (BOTTOM LEFT TO RIGHT)



COLOR SHOWN : DRTD/WALNUT TOFFEE (TOP),  
DRTD WALNUT TOFFEE, 1B (BOTTOM LEFT TO RIGHT)



COLOR SHOWN : DR PAPRIKA SPICE (TOP),  
1B, DR HONEY AUBURN (BOTTOM LEFT TO RIGHT)



COLOR SHOWN : DR GINGER BROWN (TOP),  
1B (BOTTOM LEFT TO RIGHT)

**converti-cap™**  
PREMIUM SYNTHETIC FIBER

**1 WIG, 1 MILLION WAYS.**

Converti-Cap has more styles to satisfy the girls that love textures, curls, and swirls. Get this versatile unit in new colors and styles that can be styled as up do's, ponytails, half wigs and more!

- Limitless styling possibilities
- Reveal your own hairline for a realistic look
- Breathable and flexible cap that lays flat
- Adjustable drawstring for a custom fit
- Easy-to-Blend Textures
- Premium Synthetic Fibers



**SASSY BELLE**

**TWIST & TURN**

**LUSCIOUS ANGEL**

**FOREVER ANNIE**

AVAILABLE COLORS

**SASSY BELLE :**  
1, 1B, 2, DR CHAI LATTE,  
DR GINGER TOFFEE,  
DR RED VELVET,  
DR2/CHOCOLATE SWIRL,  
DR2/HONEY BROWN,  
DR4/GOLDEN HONEY BLONDE

**TWIST & TURN :**  
1, 1B, 2, DR CHERRY CRUSH,  
DR2/GINGER BROWN,  
DR2/GOLDEN AMBER,  
DRST DRAGON FRUIT,  
DRST GINGER PLUM,  
DRST MAPLE BROWN,  
DRTD WALNUT TOFFEE

**LUSCIOUS ANGEL :**  
1, 1B, 2, DR GINGER TOFFEE,  
DR HONEY AUBURN,  
DR PAPRIKA SPICE,  
DR RED VELVET,  
DR2/CHOCOLATE SWIRL,  
DR2/HONEY BROWN,  
DR4/GOLDEN HONEY BLONDE

**FOREVER ANNIE :**  
1, 1B, 2, S1B/30,  
DR GINGER BROWN,  
DR HAZELNUT BROWN,  
DR HONEY BROWN,  
DR MULLED WINE,  
DR2/CHOCOLATE SWIRL,  
DR2/GOLDEN HONEY

SPECIAL  
COLORS



# Pretty Quick™

PREMIUM SYNTHETIC FIBER

## BANG X PONY

Inspired by social media, Alaid features a swooped bang and wavy pony that's just right for a night out. This stylish duo can be worn separately or together for a variety of quick looks.

- Clip-On Bangs + Drawstring Construction
- Combs for Secure Hold
- Made with 100% Heat Resistant Fiber



Pre-attached  
**BANG X PONY**

COLOR SHOWN :  
2T1/425 (LEFT), DR2730 (RIGHT)

**ALAID 20"**

### AVAILABLE COLORS

1, 1B, 2, 613, 99J, S1B/30, S4/27, 2T1/30, 2T1/425, DR2730, DR425

### SPECIAL COLORS



# Pretty Quick™

PREMIUM SYNTHETIC FIBER

## PONY

The popular Wet & Wavy style is on the easy-to-wear Pretty Quick Pony. This new Deep Wave option will have the wearer stylish and out the door in 60 seconds.

- Secure Fit with Combs & Drawstring
- Quick and Easy Styling
- Soft Feel & Natural Luster
- Premium Synthetic Fiber



**Wet & Wavy**  
STYLE

COLOR SHOWN :  
1B (LEFT), DRST HONEY BROWN (RIGHT)

**DEEP WAVE 20"**

### AVAILABLE COLORS

1, 1B, 2, CHOCOLATE SWIRL, DRST HONEY BROWN, DR2/CINNAMON WINE, DR2/GINGER BROWN, DR2/GOLDEN AMBER

### SPECIAL COLORS





# X-Pression®

“Made to Braid Better”

**PRE-STRETCHED**

**72" 3X**



**6X 52"**



**3X 52"**



**3X 42"**



**2X 42"**



AVAILABLE STYLES

**PRE-STRETCHED BRAID 72" 3X • PRE-STRETCHED BRAID 52" 6X**

**PRE-STRETCHED BRAID 52" 3X • PRE-STRETCHED BRAID 42" 3X • PRE-STRETCHED BRAID 42" 2X**