

Outre®

MAY 2022



STYLE & COLOR SHOWN :
SPRINGY AFRO TWIST 10" 3X/2T1B/30 (LEFT), PRE-STRETCHED BRAID 32" 3X/1B (RIGHT)

Outre
85 Oxford Drive,
Moonachie, NJ 07074
USA

**PRETTIEST
LOOKS ON THE
PLAYGROUND**

Pre-customized for perfectly sized pieces

IN THIS ISSUE

Trendy styles, convenience and quality products aren't just for adults. Made with resilient fibers, X-Pression Pre-Stretched Braid 32" and X-Pression Lil Looks Springy Afro Twist 10" are just the right sizes for children, and everyone else that want short faux locs, box braids, twists and more. No cutting required!

BRAID 03 PRE-STRETCHED BRAID 32" 3X	BRAID 04 SPRINGY AFRO TWIST 10" 3X	BRAID 05 SPRINGY AFRO TWIST 30" 3X	BRAID 06 LIL LOOKS
BRAID 08 BORABORA LOCS 24" 3X BORABORA LOCS 40" 3X	BRAID 10 BRAID UP	HH-BLEND WEAVE 12 PURPLE PACK 3PCS	BLEND LACE WIG 14 ANDREINA
LACE WIG 15 COLLINA	LACE WIG 16 ETIENNE	LACE WIG 17 BEGONIA	LACE WIG 18 DIONE LIANNE MANUELLA
LACE WIG 20 BETTINA STINA	LACE WIG 22 GIOVANNA	LACE WIG 23 LEDINA NOELIA	LACE WIG 24 EVERY21
LACE PART WIG 25 SYLVIE	PONYTAIL 26 SARAID	PONYTAIL 27 NATURAL WAVE 22"	



Superior braiding meets speed. Take the shortcut to creating braided styles with this pre-stretched 32" length braiding hair from X-Pression.

- Pre-Stretched & Pre-Layered
- Quickest Install
- Easy to Braid
- Easy to Manage
- Ultra Lightweight
- Hot Water Set Friendly
- Tangle-Free



PRE-STRETCHED BRAID 32" 3X

AVAILABLE COLORS :

1, 1B, 2, 4, 2T1B/27, 2T1B/30, 2T1B/350, 2T1B/425

X-Pression
Lil LOOKS
SPRINGY AFRO TWIST
100% KANEKALON FIBER

No cutting or customizing pieces with Lil Looks!
Create short styles quicker with Lil Looks Springy Afro Twist in this versatile 10" option.



100% Kanekalon®
Flame Retardant Fiber



COLOR SHOWN : 2T1B/30

SPRING AFRO TWIST 10" 3X

- Pre-Stretched & Pre-Layered
- Quickest Install
- Easy to Braid
- Easy to Manage
- Ultra Lightweight
- Hot Water Set Friendly
- Tangle-Free

SPECIAL COLORS



AVAILABLE COLORS :
1, 1B, 2, 4,
2T1B/27,
2T1B/30,
MACCHIATO,
DRAGON FRUIT



X-Pression
Twisted Up
SPRINGY AFRO TWIST
100% KANEKALON FIBER

The best-selling Twisted Up line just got better with Springy Afro Twist in 30" for easier, faster long length styles.

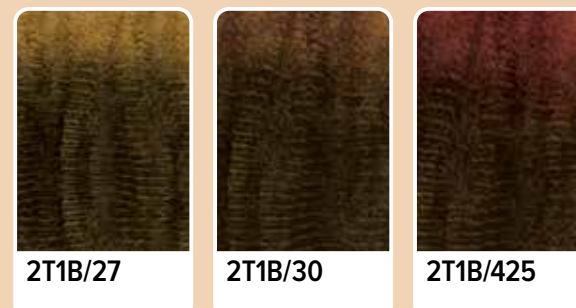


PRE-SEPARATED & PRE-FLUFFED

COLOR SHOWN : 1B

SPRING AFRO TWIST 30" 3X

SPECIAL COLORS



AVAILABLE COLORS :
1, 1B, 2, 4,
613,
2T1B/27,
2T1B/30,
2T1B/425

- Made with 100% Kanekalon
- Soft on skin & ultra lightweight
- Matches your kinks and curls
- Ideal for butterfly locs, distressed locs, ponytails and crochet
- Pre-separated & pre-fluffed for easy installation

X-Pression[®] Lil LOOKS[™]

100% PREMIUM SYNTHETIC FIBER

X-Pression Lil Looks creates long-lasting, kid-friendly crochet styles for your little cutie. Now there is no need to cut and customize traditional crochet braids, this hair is the perfect size and made of resilient fibers that maintain a neat look longer.



BOX BRAID 10"

SENEGAL TWIST 10"

STRAIGHT BAHAMA LOCS 10"

WAVY BAHAMA LOCS 10"



BUTTERFLY PASSION TWIST 8"

BUTTERFLY LOCS SWEETIE 8" 2X

WAVY BOMB TWIST 8"

PASSION WATERWAVE FEED TWIST 10" 3X



PASSION BOHEMIAN FEED TWIST 10" 3X

TWIST ROD 6"

COCO FRO 5"

BOUNCE & BOUNCE 5"



BOUNCY WAND 5"

BOUNCE ROD 6"

KEY FEATURES

- Quick, Long-Lasting Protective Style
- Kid-Friendly Sizes & Lengths
- Crochet Loop
- Easy to Maintain & Manage
- Soft Texture & Lightweight



COLOR SHOWN: 2T1B/30

3X SPRINGY AFRO TWIST 10"

COLOR SHOWN: 1B

3X PRE-STRETCHED BRAID 32"

COLOR SHOWN: MACCHIATO

2X BOX BRAID SWEETIE 8"

AVAILABLE COLORS :

BOX BRAID 10" : 1, 1B, 2, 4, 27, 30, 99J, BURGUNDY
SENEGAL TWIST 10" : 1, 1B, 2, 4, 27, 30, 99J, BURGUNDY
STRAIGHT BAHAMA LOCS 10" : 1, 1B, 2, 4, 27, 30, 99J, BURGUNDY
WAVY BAHAMA LOCS 10" : 1, 1B, 2, 4, 27, 30, 99J, BURGUNDY

BUTTERFLY PASSION TWIST 8" : 1, 1B, 2, 4, 2T1B/27, 2T1B/30, DRAGON FRUIT, MACCHIATO
BUTTERFLY LOCS SWEETIE 8" 2X : 1, 1B, 2, 4, DRAGON FRUIT, MACCHIATO
WAVY BOMB TWIST 8" : 1, 1B, 2, 4, 27, 30, 99J, BURGUNDY, 2T1B/27, 2T1B/30, DRAGON FRUIT, MACCHIATO
PASSION WATERWAVE FEED TWIST 10" 3X : 1, 1B, 2, 4, 2T1B/27, 2T1B/30, 2T1B/350, 2T1B/425

AVAILABLE COLORS :

PASSION BOHEMIAN FEED TWIST 10" 3X : 1, 1B, 2, 4, 2T1B/27, 2T1B/30, 2T1B/350, 2T1B/425
TWIST ROD 6" : 1, 1B, 2, 4, 27, 30, 99J, BURGUNDY
COCO FRO 5" : 1, 1B, 2, 4, 2T1B/27, 2T1B/30, 2T1B/350, 2T1B/425
BOUNCE & BOUNCE 5", **BOUNCY WAND 5"** : 1, 1B, 99J, BURGUNDY

BOUNCY ROD 6" : 1, 1B, 2, 4, 27, 30, 99J, BURGUNDY
SPRINGY AFRO TWIST 10" 3X : 1, 1B, 2, 4, 2T1B/27, 2T1B/30, DRAGON FRUIT, MACCHIATO
PRE-STRETCHED BRAID 32" 3X : 1, 1B, 2, 4, 2T1B/27, 2T1B/30, 2T1B/350, 2T1B/425
BOX BRAID SWEETIE 8" 2X : 1, 1B, 2, 4, DRAGON FRUIT, MACCHIATO

X-Pression
Twisted Up®

BORABORA LOCS
24" 3X & 40" 3X

Borabora locs are a new bold crochet braid style available in a variety of eye-catching colors, and waist-length and hip-length options.

- Quick, Long Lasting Protective Style
- Soft Texture & Lightweight
- 100% Handcrafted
- Nonflammable
- Mix & Match with Other Twisted Up Styles
- Premium Synthetic Fiber

MIX & MATCH WITH
SPRINGY AFRO
TWIST



COLOR SHOWN : OMBRE 613

COLOR SHOWN : 3T OMBRE BERRY

BORABORA LOCS 40" 3X **BORABORA LOCS 24" 3X**

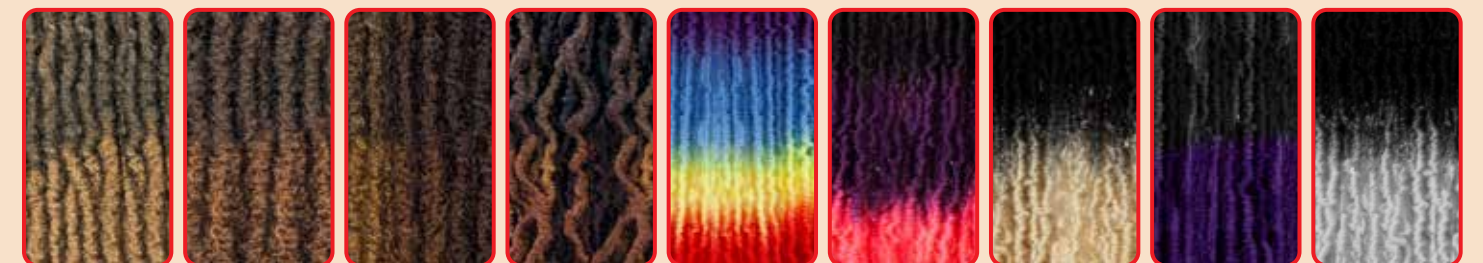


LIGHTWEIGHT

AVAILABLE COLORS

1, 1B, 2, 4, 613, 2T1B/27, 2T1B/30, MACCHIATO, DRAGON FRUIT, 3T OMBRE PRISM, 3T OMBRE BERRY, OMBRE 613, OMBRE PURPLE, OMBRE SILVER

SPECIAL COLORS



2T1B/27 2T1B/30 MACCHIATO DRAGON FRUIT 3T OMBRE PRISM 3T OMBRE BERRY OMBRE 613 OMBRE PURPLE OMBRE SILVER

Braid Up™
100% Kanekalon®



Braid Up®

100% Kanekalon®

3X

- ✓ MORE VOLUME
- ✓ PRE-STRETCHED



AVAILABLE STYLES:
PRE-STRETCHED BRAID 46" 3X,
PRE-STRETCHED BRAID 56" 3X

AVAILABLE COLORS:
1, 1B, 2, 4, 2T1B/27, 2T1B/30,
2T1B/350, 2T1B/425



premium **3** PCS
purple pack®

100% HUMAN HAIR PREMIUM BLEND

From the popular Purple Pack Collection, get Purple Pack 3PCS in endless short, pre-set styles to fit every budget and desired look.

- Premium Human Hair Blend
- 3-piece set of 6" to 12" lengths
- Variety of wavy and curly patterns
- Multiple color options



JERRY CURL **JADE SWIRL** **ROMANCE CURL**

SPRINGY AFRO TWIST **TWIST JADE SWIRL LONG** **TEXTURED LOOSE CURL** **TEXTURED LOOSE WAVE**

4C-COILY **4A-KINKY** **3C-WHIRLY**



SWEET CURL **SEA WAVE** **TWIN DEEP**

BEACH CURL **BOHO CURL** **FRENCH CURL**

WILD CURLY **WILD SPIRAL**

AVAILABLE COLORS :

BABY SOFT : 1, 1B, 2, 4, C1B/30, C4/30, DR2730, DR27613, DR30, DR425
DISCO CURL : 1, 1B, 2, 34, 4, 44, 51, C1B/30, C4/30, DR2730, DR27613, DR30, DR425
FRENCH KISS : 1, 1B, 2, 4, C1B/30, C4/30, DR2730, DR27613, DR30, DR425
JERRY CURL : 1, 1B, 2, 34, 4, 44, 51, C1B/30, C4/30, DR2730, DR27613, DR30, DR425
JADE SWIRL : 1, 1B, 2, 34, 4, 44, 51, C1B/30, C4/30, DR2730, DR27613, DR30, DR425
ROMANCE CURL : 1, 1B, 2, 34, 4, 44, 51, C1B/30, C4/30, DR2730, DR27613, DR30, DR425
SWEET CURL : 1, 1B, 2, 4, C1B/30, C4/30, DR2730, DR27613, DR30, DR425
SEA WAVE : 1, 1B, 2, 34, 4, 44, 51, C1B/30, C4/30, DR2730, DR27613, DR30, DR425
TWIN DEEP : 1, 1B, 2, 34, 4, 44, 51, C1B/30, C4/30, DR2730, DR27613, DR30, DR425

BOUNCE CURL LONG : 1, 1B, 2, 4, 613, DR2730, DR30, DR425, DR2/27613, 99J
DIVA WAVE LONG : 1, 1B, 2, 4, 613, DR2730, DR30, DR425, DR2/27613, 99J
JERRY CURL LONG : 1, 1B, 2, 4, 613, DR2730, DR30, DR425, DR2/27613, 99J
SPRINGY AFRO TWIST : 1, 1B, 2, 2T/27, 2T/30, 2T/425, DR CHAI LATTE, DR GINGER TOFFEE
TWIST JADE SWIRL LONG : 1, 1B, 2, 4, 613, DR2730, DR30, DR425, DR2/27613, 99J
TEXTURED LOOSE CURL, TEXTURED LOOSE WAVE : 1, 1B, 2, DR4/GOLDEN HONEY BLONDE, DR CHOCOLATE SWIRL, DR GINGER BROWN, DR HONEY BROWN, DR RED VELVET
BEACH CURL : 1, 1B, 2, 613, 2T/350, DR2730, DR30, DR425, DR2/27613
BOHO CURL : 1, 1B, 2, 613, 2T/350, DR2730, DR30, DR425, DR2/27613

FRENCH CURL : 1, 1B, 2, 613, 2T/350, DR2730, DR30, DR425, DR2/27613
LARGE ROLLER SET : 1, 1B, 2, 4, 950, C1B/30, C4/30, DR2730, DR30, DR425
ROD SET : 1, 1B, 2, 4, 950, C1B/30, C4/30, DR2730, DR30, DR425
SMALL ROLLER SET : 1, 1B, 2, 4, 950, C1B/30, C4/30, DR2730, DR30, DR425
STRAW SET : 1, 1B, 2, 4, 950, C1B/30, C4/30, DR2730, DR30, DR425
4C-COILY : 1, 1B, 2, 4, 950, BU, C1B/30, C4/30, DR2730, DR30, DR425
4A-KINKY : 1, 1B, 2, 4, 950, BU, C1B/30, C4/30, DR2730, DR30, DR425
3C-WHIRLY : 1, 1B, 2, 4, 950, BU, C1B/30, C4/30, DR2730, DR30, DR425
WILD CURLY : 1, 1B, 2, 4, 950, C1B/30, C4/30, DR2730, DR30, DR425, DR27613
WILD SPIRAL : 1, 1B, 2, 4, 950, C1B/30, C4/30, DR2730, DR30, DR425, DR27613



Outre®

100% HUMAN HAIR BLEND

360 | **13" x 6"**
FRONTAL LACE WIG | HAND-TIED LACE FRONTAL



This versatile wig features soft waves and beautifully blended colors with a hairline pre-customized to look realistic, and a construction that provides multiple parting options.

- Premium Human Hair Blend
- 360 All Around Hand-Tied Lace Edges
- 13" x 6" HD Lace Frontal
- Pre-Plucked Hairline with a Natural Shape
- Full Temple Coverage & Sideburn-to-Sideburn Hand-Tied Lace
- Pre-Attached Elastic Band for a Flat Fit



COLOR SHOWN : DRFF4/BUTTERED TOAST, DRST MAPLE BROWN, DRST2/CHOCOLATE CARAMEL (LEFT TO RIGHT)

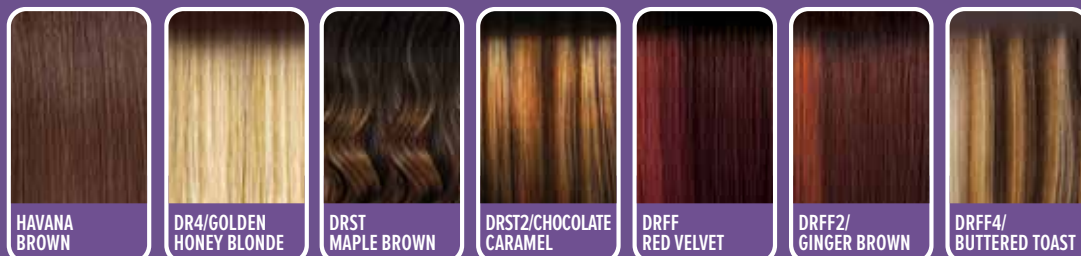


ANDREINA 13" X 6" 24"

AVAILABLE COLORS :

- 1, 1B, 2, HAVANA BROWN, DR4/GOLDEN HONEY BLONDE, DRST MAPLE BROWN, DRST2/CHOCOLATE CARAMEL, DRFF RED VELVET, DRFF2/GINGER BROWN, DRFF4/BUTTERED TOAST

SPECIAL COLORS



COLOR SHOWN : DRFF CHOCOLATE TRUFFLE, DRFF CARAMEL MOCHA (LEFT TO RIGHT)

COLLINA 12"

AVAILABLE COLORS :

- 1, 1B, 2, 613, DR RED VELVET, DR2/CINNAMON SPICE, DR4/BL GOLDEN HONEY, DRFF CARAMEL MOCHA, DRFF CHOCOLATE TRUFFLE, DRFF HAZELNUT



Outre®

LACE FRONT DELUXE

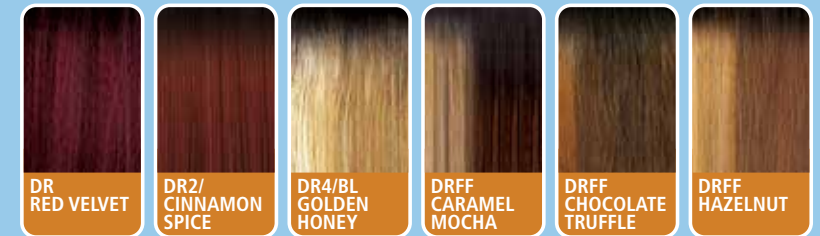
PREMIUM SYNTHETIC FIBER

This bob's anything but boring! Paired with beautifully blended colors and deeper-hand tied lace edges for a natural finished effect.

- Ear-to-Ear HD Transparent Lace
- Deeper Pre-Plucked, Hand-Tied Lace Edges
- 5" Deep Lace Parting
- Natural Baby Hairs
- Heat Resistant



SPECIAL COLORS



Lace Front
PERFECT HAIRLINE™
FULLY HAND-TIED 13" X 6" LACE WIG



Achieve a Perfect Hairline with this pretty 13"x6" unit that can be parted in a variety of ways for plenty of styling options.

- Fully Hand-Tied 13" x 6" Frontal
- Ear-to-Ear Soft HD Transparent Lace
- Natural Baby Hairs
- Comes with Pre-Attached Elastic Band
- Pre-Plucked Hairline
- Heat Styling Friendly



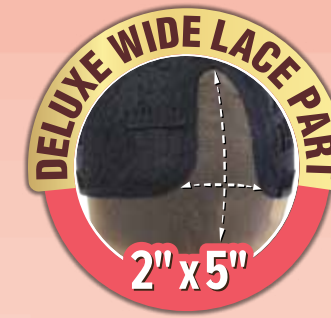
COLOR SHOWN: DRFF4/BUTTERED TOAST (TOP), DRFF RED VELVET, DRST2/CHOCOLATE CARAMEL (BOTTOM LEFT TO RIGHT)

ETIENNE 13" X 6" 26"

AVAILABLE COLORS :

1, 1B, 2, 613, DR CHOCOLATE SWIRL, DRST2/CHOCOLATE CARAMEL, DR4/SANDY BLONDE, DRFF GOLDEN AMBER, DRFF RED VELVET, DRFF2/GINGER BROWN, DRFF4/BUTTERED TOAST

SPECIAL COLORS



melted HAIRLINE®

LACE FRONT WIG

DELUXE WIDE LACE PART

This future top-seller features face-framing highlights, flattering layers, and a wider lace part area all with a hairline your customers won't want to hide.

- Soft HD Transparent Lace
- Deluxe Wide Lace Part
- Pre-Plucked Hairline & Sideburns
- Pre-Attached Wide Elastic Band for a Secure Fit
- Redesigned ComfortFit Ear Contour
- Salon-Inspired Colors
- Natural Baby Hairs



COLOR SHOWN: DRFF CARAMEL MOCHA (TOP), DRFF AMBER SUNSET, DR2/CINNAMON SPICE (BOTTOM LEFT TO RIGHT)

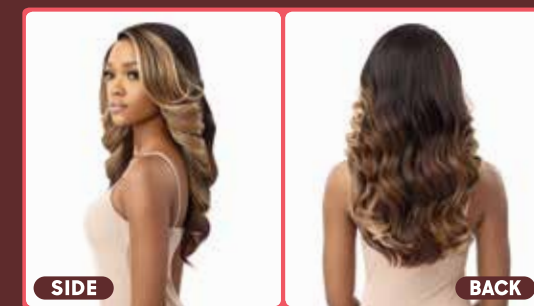
BEGONIA 22"



AVAILABLE COLORS :

1, 1B, 2, 613, DR RED VELVET, DR2/CINNAMON SPICE, DR2/BL HAZELNUT, DR4/BL GOLDEN HONEY, DRFF AMBER SUNSET, DRFF CARAMEL MOCHA

SPECIAL COLORS



melted HAIRLINE®

LACE FRONT WIG

Seen on the streets and in the salons, this Dionne is a wig-lovers dream. Featuring a hairline that melts onto the skin coupled with gorgeous curls and colors.

Shoppers will fall in love with Lianne. This wig has been carefully crafted to create a style that turns heads paired with our Frontal Effect feature.

This style is a stunner! Manuella has large wand curls in colors that customers crave. Available in a variety of hot-selling hues: honey, cinnamon, mocha and more.

- Soft HD Transparent Lace
- 5" Deep Parting
- Completely Pre-Plucked Hairline & Sideburns
- Pre-Attached Wide Elastic Band for a Secure Fit
- Redesigned ComfortFit Ear Contour
- Natural Baby Hairs



COLOR SHOWN :
DRFF RED VELVET (TOP)
DRFF4/BUTTERED TOAST (LEFT) DRFF CHOCOLATE TOFFEE (RIGHT)



COLOR SHOWN :
DR4/BL GOLDEN HONEY (TOP)
CHOCO CARAMEL (LEFT) DR4/DEEP PAPRIKA RED (RIGHT)



COLOR SHOWN :
DRFF CARAMEL MOCHA (TOP)
DR4/BL GOLDEN HONEY (LEFT),
DRFF AMBER SUNSET (RIGHT)



DIONE 20"

LIANNE 24"

MANUELLA 28"

AVAILABLE COLORS :

DIONE : 1, 1B, 2, 613, DR CHOCOLATE SWIRL, DR4/SANDY BLONDE, DRFF CHOCOLATE TOFFEE, DRFF GOLDEN AMBER, DRFF RED VELVET, DRFF2/GINGER BROWN, DRFF4/BUTTERED TOAST

LIANNE : 1, 1B, 2, 613, CHOCO CARAMEL, DR RED VELVET, DR2/BL HAZELNUT, DR4/BL GOLDEN HONEY, DR4/DEEP PAPRIKA RED, DRFF CHOCOLATE TRUFFLE

MANUELLA : 1, 1B, 2, 613, DR RED VELVET, DR2/BL HAZELNUT, DR2/CINNAMON SPICE, DR4/BL GOLDEN HONEY, DRFF AMBER SUNSET, DRFF CARAMEL MOCHA





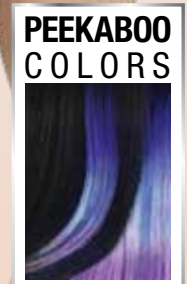
COLOR BOMB™

PREMIUM SYNTHETIC FIBERS

Just in time for spring and summer! Bettina has a touch of vibrant, peekaboo accent colors for a warm-weather style that stands out.

Stina was made to sell out! This simple bob style is kicked up a notch with a touch of vibrant color.

- Salon-Inspired Peekaboo Accent Colors
- Pre-Plucked HD Transparent Lace
- Natural Baby Hairs
- Premium Synthetic Fibers
- Selfie-Worthy Styles



NATURAL BABY HAIRS



STINA 12"

COLOR SHOWN
1B/3DR CHERRY BOMB (LEFT)
1B/3DR PINK FUCHSIA (RIGHT)



BETTINA 10"

COLOR SHOWN
1B/3DR BLUE SAPPHIRE (LEFT)
1B/3DR PINK FUCHSIA (RIGHT)



1B/3DR PINK FUCHSIA 1B/3DR CHERRY BOMB 1B/3DR BLUE SAPPHIRE 1B/3DR FIRE SUNSET 4/3DR HONEYCOMB 1B/3DR BLUE SAPPHIRE 4/3DR HONEYCOMB 1B/3DR CHERRY BOMB 1B/3DR FIRE SUNSET 1B/3DR PINK FUCHSIA

AVAILABLE COLORS :
1, 1B, 613, 1B/3DR BLUE SAPPHIRE, 1B/3DR CHERRY BOMB,
1B/3DR FIRE SUNSET, 1B/3DR PINK FUCHSIA, 4/3DR HONEYCOMB



AVAILABLE COLORS :
1, 1B, 613, 1B/3DR BLUE SAPPHIRE, 1B/3DR CHERRY BOMB,
1B/3DR FIRE SUNSET, 1B/3DR PINK FUCHSIA, 4/3DR HONEYCOMB



SleekLay[®]

LACE FRONT WIG Part

Geovanna is for the girls that love curls, realistic parts and a unit that lays super flat! Why choose one favorite feature when customers can have it all?

- Wider Hand-Tied Lace Part
- Extra Hand-Tied Lace Edges
- Pre-plucked Hairline
- Natural Baby Hairs
- Hump-less, Laid finish
- Heat-Friendly



COLOR SHOWN :
DR CHOCOLATE SWIRL (LEFT)
DRFF4/FROSTED DARK BLONDE (RIGHT)



SIDE

BACK

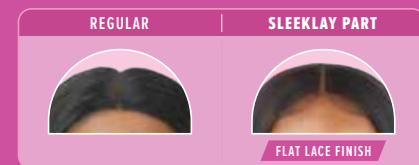


GEOVANNA 22"



AVAILABLE COLORS :

1, 1B, 2, 613, DR CHOCOLATE SWIRL, DR4/HONEY GINGER, DR4/SUMMER BLONDE, DRFF BLACK CHERRY, DRFF HONEY BROWN, DRFF2/CINNAMON SPICE, DRFF4/FROSTED DARK BLONDE



SPECIAL COLORS



Lace front[®]

LACE FRONT WIG

Shoppers don't have to choose between pretty waves and a blunt bob. Ledina has both and in an assortment of salon-quality colors. If they like layers, they'll love Noelia! This unit features a variety of special colors and a style that shoppers will feel beautiful wearing.

- Pre-Plucked Lace Parting With Natural Baby Hairs
- HD Transparent Lace
- Breathable, Comfortable Cap
- Natural Baby Hairs
- Premium Synthetic Fibers



COLOR SHOWN :
DRFF2/GINGER COPPER (TOP)
DRFF BLACK CHERRY (BOTTOM)



SIDE

BACK

COLOR SHOWN :
DR4/CHAMPAGNE (TOP)
DRFF2/GINGER COPPER (BOTTOM)



SIDE

BACK

LEDINA 10"

NATURAL BABY HAIRS

NOELIA 18"



NATURAL BABY HAIRS



AVAILABLE COLORS :

LEDINA : 1, 1B, 2, 613, CHOCOLATE SWIRL, DR2/GOLDEN HONEY BLONDE, DRFF BLACK CHERRY, DRFF GINGER COCO BROWN, DRFF HONEY BROWN, DRFF2/GINGER COPPER

NOELIA : 1, 1B, 2, 613, CHOCOLATE SWIRL, CINNAMON SPICE, DR4/CHAMPAGNE, DRFF BLACK CHERRY, DRFF HONEY BROWN, DRFF2/GINGER COPPER

SPECIAL COLORS



Lace Front
EveryWearTM
LACE FRONT WIG

This new style can go from day to night, and office desk to dinner reservations. Every21's cut and colors are wearable, not wild but will get attention in your stores and everywhere women go.

- Ear-to-Ear HD Lace
- Easy, Goes-with-Everything Styles
- High Heat Resistant Fiber



COLOR SHOWN :
DRFF GOLDEN AMBER (LEFT)
DRFF CHOCOLATE TOFFEE (RIGHT)



EVERY21 16"

SPECIAL COLORS



AVAILABLE COLORS :
1, 1B, 2, 613,
CHOCOLATE SWIRL,
DR4/GOLDEN HONEY BLONDE,
DR4/SANDY BLONDE,
DRFF CHOCOLATE TOFFEE,
DRFF GOLDEN AMBER,
DRFF RED VELVET,
DRFF2/GINGER BROWN



Sylvie is the sassy short wig that's perfect for busy women that need to get out of the door quick! Pick the wig that's made to pop-on-and-go.

- Pre-Plucked & Hand-Tied Lace Part
- Breathable Mesh Cap
- Heat-Styling Friendly
- Premium Synthetic Fibers



COLOR SHOWN :
CHOCOLATE SWIRL (LEFT)
DR COPPER ORANGE (RIGHT)



SYLVIE



SPECIAL COLORS



AVAILABLE COLORS :
1, 1B, 2, 613,
CHOCOLATE SWIRL,
GINGER BROWN,
DR COPPER ORANGE,
DR2/CINNAMON WINE,
DR4/SANDY BLONDE,
DRFF GOLDEN AMBER

Pretty Quick™

PREMIUM SYNTHETIC FIBER

BANG X PONY

Styling is simple with Quick Pony's new Saraid style. A sleek, swooped bang and cascading curls creates a style that's chic but surprisingly fast.

- Clip-On Bangs + Drawstring Construction
- Combs for Secure Hold
- Made with 100% Heat Resistant Fiber



COLOR SHOWN :
S4/27 (LEFT), DR425 (RIGHT)



COLOR SHOWN :
1B (LEFT), DR2/GOLDEN AMBER (RIGHT)



Pretty Quick™

PREMIUM SYNTHETIC FIBER

PONY

It's heating up outside and women want easy, fast Wet & Wavy styles. Stock the shelves with Natural Wave 22", a summer-favorite style.

- Natural Look & Soft Texture
- Quick and Easy Styling
- Lightweight Drawstring Construction
- Made with Premium Synthetic Fiber



Pre-attached
BANG X PONY



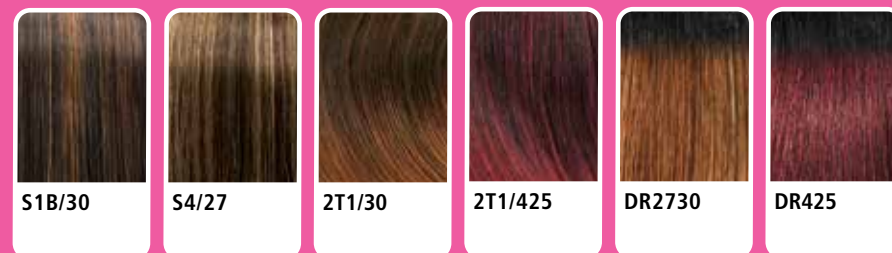
Wet & Wavy
STYLE

SARAID 22"

AVAILABLE COLORS

1, 1B, 2, 613, 99J, S1B/30, S4/27, 2T1/30, 2T1/425, DR2730, DR425

SPECIAL COLORS

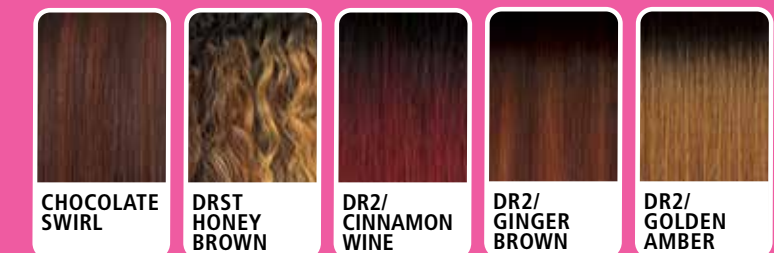


NATURAL WAVE 22"

AVAILABLE COLORS

1, 1B, 2, CHOCOLATE SWIRL, DRST HONEY BROWN, DR2/CINNAMON WINE, DR2/GINGER BROWN, DR2/GOLDEN AMBER

SPECIAL COLORS



T W I S T E D U P - W A T E R W A V E F R O T W I S T S T Y L E

X-Pression
Twisted Up®

WATERWAVE FRO TWIST

SUPER LONG 3X

100% KANEKALON FIBER

LONG LENGTH WATERWAVE!

- ✓ Made with 100% Kanekalon / Premium Fiber
- ✓ Pre-separated, pre-fluffed & Minimal Tangling for easy installation
- ✓ Just the Right Amount of Natural Sheen, not so shiny or dull
- ✓ Finished styles do not unravel and look polished
- ✓ Soft on skin & ultra-lightweight

**SUPER
Long**



**PRE-SEPARATED
& PRE-FLUFFED**



SPECIAL COLORS



COLOR SHOWN : 2T1B/30

WATERWAVE FRO TWIST SUPER LONG AVAILABLE COLORS

1, 1B, 2, 4, 27, 30, 51, 425, 613, 2T1B/27, 2T1B/30, MACCHIATO, DRAGON FRUIT, BLUE, PURPLE, RED, HOT PINK