

APRIL 2023

Outree®



STYLE & COLOR SHOWN:
VIRGIN BODY 26", 28", 30" | DR425 (LEFT)
SLEEK PRESSED 26", 28", 30" | DR27 (RIGHT)

**SPEND LESS,
STYLE MORE WITH**
PURPLE PACK BRAZILIAN BUNDLES

IN THIS ISSUE

Get the luxurious look and feel of bundles at a price that's just right. One pack of our Purple Pack Brazilian Boutique includes 3 bundles of luscious hair in long lengths with a matching 4" Deep Part Closure.

BRAID 03 ORIGINAL BUTTERFLY LOCS 22" X-Pression Twisted Up	BRAID 04 SPRINGY AFRO TWIST SPRINGY BOHEMIAN TWIST WATERWAVE FRO TWIST X-Pression Twisted Up	HH-CLOSURE 06 MYLK YAKI 4X4 HD CLOSURE 10", 12", 14" 100% REMI HUMAN HAIR Remi	HH-CLOSURE 07 PURPLE PACK YAKI 4X4 HD CLOSURE 10", 12", 14" premium purple pack
HH BLEND - WEAVE 08 VIRGIN BODY 26" 28" 30" VIRGIN SLEEK PRESSED 26" 28" 30" VIRGIN VOLUME PRESSED 26" 28" 30" premium purple pack BRAZILIAN BOUTIQUE LOOK HUMAN HAIR PREMIUM BLEND NEW LENGTHS	LACE WIG 10 CHLORIS melted HAIRLINE LACE FRONT WIG	LACE WIG 11 KEOLA SleekLay Part	LACE WIG 12 SEORA Outre LACE FRONT DELUXE
LACE WIG 13 ABRIYANA Lace front	LACE WIG 14 KIMISHA CHANDICE YAVANNA COLOR BOMB PREMIUM SYNTHETIC FIBRE	FULL WIG 16 VIVI wigpop SYNTHETIC FULL WIG Style SELECTS	CONVERTI-CAP 17 W&W ISLAND CURLS converti:cap
CATALOG 18 ALL ITEMS SleekLay Part			

Twisted Up®

Create the latest trendy look with Original Butterfly Locs that come in 22" + various color options for quick, colorful, hip-length looks!

- Quick, Long Lasting Protective Style
- Easy to Maintain & Manage
- Soft Texture & Light Weight
- 100% Premium Synthetic Fiber



COLOR SHOWN : DRAGON FRUIT



ORIGINAL BUTTERFLY LOCS 22"

AVAILABLE COLORS :
1, 1B, 2, 4, 2T1B/27, 2T1B/30,
MACCHIATO, DRAGON FRUIT, 613,
RED, BABY PINK, BLUE, PURPLE

SPECIAL COLORS



SMALLER CURL

MEDIUM

BIGGER CURL



MIX & MATCH

SPRINGY AFRO TWIST

SPRINGY BOHEMIAN TWIST

WATERWAVE FRO TWIST

THE HAIR THAT DOES IT ALL
Crochet, ponytails, twists and more. It's up to you how you twist it up.



STYLE & COLOR SHOWN - SPRINGY AFRO TWIST 34" | 2T99J/350 + 1B



STYLE & COLOR SHOWN - SPRINGY BOHEMIAN TWIST 30" | DRAGON FRUIT



STYLE & COLOR SHOWN - WATERWAVE FRO TWIST SUPER LONG 3X / 1B



STYLE & COLOR SHOWN - SPRINGY AFRO TWIST 16" 3X + BRAID UP PEE STRETCHED / 1B



AVAILABLE LENGTHS & COLORS :

SPRINGY AFRO TWIST 12" 2X : 1, 1B, 2, 4, 27, 30, 2T1B/27, 2T1B/30, 2T1B/350, 2T1B/425

SPRINGY AFRO TWIST 16" 3X : 1, 1B, 2, 4, 27, 30, 51, 350, 425, 613, 950, 2T1B/27, 2T1B/30, 2T1B/350, 2T1B/425, 2T1B/BLUE, 2T1B/LIME GREEN, 2T1B/PURPLE, 2T4/30, 2T99J/350. BRIGHT RED, CARNIVAL, CHAMPAGNE AMBER, DEEP BLUE, DEEP PURPLE, HOT PINK, LATTE, LIME GREEN, MERMAID, ORANGE SODA, SHERBERT, SNOW BISCUIT, STRIKE, SUNKISS

SPRINGY AFRO TWIST 24" 3X : 1, 1B, 2, 4, 27, 30, 51, 350, 613, 2T1B/27, 2T1B/30, 2T1B/350, 2T1B/425, 2T1B/BLUE, 2T1B/LIME GREEN, 2T1B/PURPLE, 2T4/30, 2T99J/350, BRIGHT RED, DEEP BLUE, DEEP PURPLE, HOT PINK, LIME GREEN

SPRINGY AFRO TWIST 30" 3X : 1, 1B, 2, 4, 613, 2T1B/27, 2T1B/30, 2T1B/350, 2T1B/425



AVAILABLE LENGTHS & COLORS :

SPRINGY BOHEMIAN TWIST 16" / 24" / 30" 3X :

1, 1B, 2, 4, 613, 2T1B/27, 2T1B/30, 2T1B/425, MACCHIATO, DRAGON FRUIT

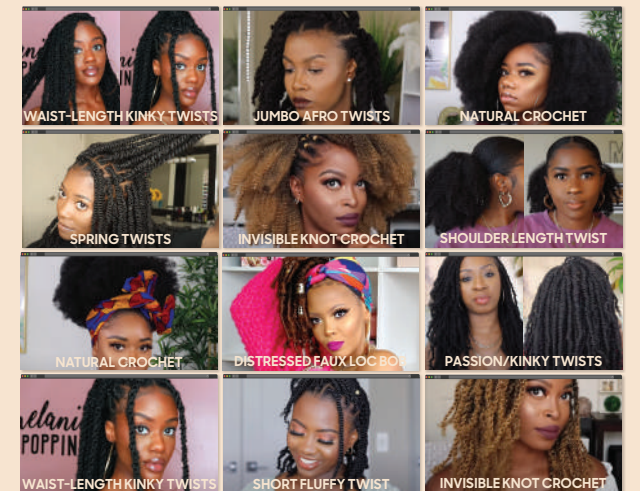


AVAILABLE LENGTHS & COLORS :

WATERWAVE FRO TWIST 22" 2X : 1, 1B, 2, 4, 51, 613, 2T1B/27, 2T1B/30, MACCHIATO, DRAGON FRUIT

WATERWAVE FRO TWIST SUPER LONG 3X : 1, 1B, 2, 4, 27, 30, 51, 425, 613, 2T1B/27, 2T1B/30, MACCHIATO, DRAGON FRUIT, BLUE, PURPLE, RED, HOT PINK

WATERWAVE FRO TWIST 26" EXTRA SUPER LONG 3X : 1, 1B, 2, 4, 2T1B/27, 2T1B/30, MACCHIATO, DRAGON FRUIT



mylk™

100% REMI HUMAN HAIR

HD LACE CLOSURE

NOURISHED WITH
COCONUT MILK CONDITIONER

Meet the new Yaki 4"x4" HD closure. Easy to pair with MYLK bundles and just as easy to blend!



STYLE SHOWN : MYLK YAKI 18"
COLOR SHOWN : 1B

MYLK 4"X4" HD LACE CLOSURE

**4" X 4" 100% REMI HUMAN HAIR
HD LACE CLOSURE**
100% Fully HAND-TIED

AVAILABLE COLORS:
1, 1B, 2

AVAILABLE LENGTHS:
10", 12", 14"

- 4"x4" Fully Hand-Tied HD Lace Closure
- 100% Remi Human Hair
- Natural Texture & Perfectly Pairs with MYLK Yaki Bundles
- Nourished with Coconut Milk Conditioner
- Tangle-Free & Shed-Free

premium purple pack®

100% HUMAN HAIR

HD LACE CLOSURE

The popular Purple Pack brand has a new Yaki 4"x4" HD closure. Blends beautifully and priced right for everyone's budget.



STYLE SHOWN : PURPLE PACK YAKI 18"
COLOR SHOWN : 1B

PURPLE PACK 4"X4" HD LACE CLOSURE



AVAILABLE COLORS:
1, 1B, 2

AVAILABLE LENGTHS:
10", 12", 14"

- 100% Human Hair
- 4"x4" HD Lace Closure
- Natural Texture & Perfectly Pairs with Purple Pack Yaki
- Tangle-Free & Shed-Free

**4" X 4" 100% HUMAN HAIR
HD LACE CLOSURE**
100% Fully HAND-TIED



COLOR SHOWN : DR425



COLOR SHOWN : DR27



COLOR SHOWN : DR30

VIRGIN BODY 26" | 28" | 30"

VIRGIN SLEEK PRESSED 26" | 28" | 30"

VIRGIN VOLUME PRESSED 26" | 28" | 30"



AVAILABLE COLORS :
JET BLACK, NATURAL BLACK,
NATURAL BROWN,
DR27, DR30, DR425, DR27613

premium
purple pack

BRAZILIAN
BOUTIQUE

100% HUMAN HAIR PREMIUM BLEND

Get on-trend with waist-length bundles that have the perfect volume, body AND a free matching, deep-part closure!

- 100% Human Hair Premium Blend
- 3 Full Bundles
- 4"x4" HD Hand-Tied Lace Closure
- Center, Left & Right Parting
- Baby Hairs Included
- Variety of Trendy Colors
- Straight, Textured, Wavy & Curly Styles

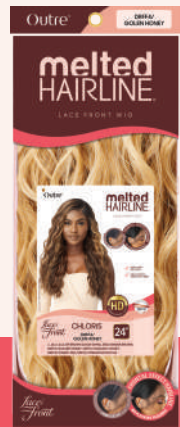


melted HAIRLINE

LACE FRONT WIG

Chloris is the glueless, warm-weather style for women that want gorgeous waves and a realistic hairline.

- Soft HD Transparent Lace
- 5" Deep Parting
- Completely Pre-Plucked Hairline & Sideburns
- Pre-Attached Wide Elastic Band for Secure Fit
- Fast, Easy & Effortless Glueless Installs
- Natural Baby Hairs
- Redesigned ComfortFit Ear Contour
- Heat-Resistant Fiber



COLOR SHOWN :
DRFF4/GOLDEN HONEY (LEFT), DR2/GINGER BROWN (BOTTOM), DR BROWN SUGAR SWIRL (TOP)



CHLORIS 24"

AVAILABLE COLORS :

- 1, 1B, 2, 613,
- DR BROWN SUGAR SWIRL,
- DR2/GINGER BROWN,
- DRFF4/GOLDEN HONEY,
- DRFF4/HAZELNUT HONEY,
- DRFF2/CHERRY RED,
- DRFF2/CINNAMON MOCHA

SPECIAL COLORS



COLOR SHOWN :
DRFF2/GINGER BROWN (LEFT), DR JAVA FROST (RIGHT)



KEOLA 22"

AVAILABLE COLORS :

- 1, 1B, 2, 613, DR CHOCOLATE SWIRL,
- DR JAVA FROST, DR2/CINNAMON WINE,
- DR4/GOLDEN HONEY BLONDE,
- DRFF GOLDEN AMBER,
- DRFF2/GINGER BROWN

SleekLay[®] Part

LACE FRONT WIG

Fall in love with Keola's waves and its flat, SleekLay Part.

- Wider Hand-Tied Lace Part
- Extra Hand-Tied Lace Edges
- Hump-less, Laid finish
- Pre-Plucked Hairline & Natural Baby Hairs
- Heat-Resistant Fiber



SPECIAL COLORS



Outre®

LACE FRONT DELUXE

PREMIUM SYNTHETIC FIBER



Secora features luscious, defined waves and extra hand-tied lace for an upgraded hairline and part.

- Ear-to-Ear HD Transparent Lace
- Deeper Pre-Plucked, Hand-Tied Lace Edges
- 5" Deep Parting
- Natural Baby Hairs
- Heat-Resistant Fiber



COLOR SHOWN:
1B (LEFT), DRFF2/GINGER BROWN (RIGHT)



SECORA 24"

AVAILABLE COLORS :

- 1, 1B, 2, 613,
- DR CHOCOLATE SWIRL,
- DR4/GOLDEN HONEY BLONDE,
- DEFF GOLDEN AMBER,
- DRFF RED VELVET,
- DRFF2/GINGER BROWN



Lace front®

LACE FRONT WIG

Abriyana brings together big, soft curls and face-framing layers for a fabulous look.

- HD Transparent Lace
- 5" Deep Parting
- Breathable, Comfortable Cap
- Natural Baby Hair
- Premium Synthetic Fibers
- Heat-Resistant Fiber



COLOR SHOWN :
DR4/NATURAL HONEY (LEFT), DRST2/CHOCOLATE CARAMEL (RIGHT)



ABRIYANA 22"



AVAILABLE COLORS :

- 1, 1B, 2, 613,
- DR CHOCOLATE SWIRL,
- DRST2/CHOCOLATE CARAMEL,
- DR4/NATURAL HONEY,
- DR4/TIRAMISU, DRFF RED VELVET,
- DRFF2/GINGER BROWN





KIMISHA

36"



MC/UL MIDNIGHT PARADISE DR/UL FAIRY FLOSS 3DR4/UL FROSTED PASTEL DR4/UL ORANGE SHERBET DR/UL PHOENIX SUN DR/UL PINK UNICORN

AVAILABLE COLORS :

1, 1B, DR/UL FAIRY FLOSS, DR/UL PHOENIX SUN, DR/UL PINK UNICORN, DR4/UL ORANGE SHERBET, 3DR4/UL FROSTED PASTEL, MC/UL MIDNIGHT PARADISE



YAVANNA

22"

COLOR SHOWN
35/PEEKA 27613 (LEFT)
1B/PEEKA 27613 (RIGHT)

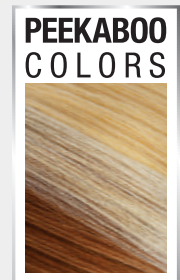


COLOR BOMB®

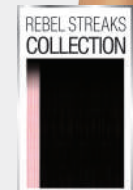
PREMIUM SYNTHETIC FIBERS

Kimisha, Chandice, and Yavanna feature beautiful styles with bold bursts of color!

- Trendy, Social Media-Inspired Styles
- Natural Baby Hair
- Stunning, Salon-Quality Colors
- Premium Synthetic Fibers
- Heat-Styling Friendly



- NATURAL BABY HAIRS
- PRE-PLUCKED HD LACE



COLOR SHOWN
1B/DRFF COTTON CANDY PINK

CHANDICE

26"

1B/DRFF DEEP VIOLET 1B/DRFF DIAMOND BLONDE 1B/DRFF ELECTRIC BLUE

1B/DRFF EMERALD GREEN 1B/DRFF ORANGE BLAZE 1B/DRFF VIVID RED

AVAILABLE COLORS :

1, 1B, 613, 1B/DRFF COTTON CANDY PINK, 1B/DRFF DEEP VIOLET, 1B/DRFF DIAMOND BLONDE, 1B/DRFF ELECTRIC BLUE, 1B/DRFF EMERALD GREEN, 1B/DRFF ORANGE BLAZE, 1B/DRFF VIVID RED



AVAILABLE COLORS :

1, 1B, 1B/PEEKA 425, 1B/PEEKA 27613, 4/PEEKA 2730, 430/PEEKA 3527, 425/PEEKA RED99J, 35/PEEKA 27613, 27613/PEEKA 30



wigpop®

SYNTHETIC FULL WIG

Style
SELECTS

Vivi has it all! Color variety, volume and curls that POP.

- Easy to Wear, Elevated Looks
- Special Styles: More curls, more textures, more length
- Ready to Wear & Go
- Heat-Styling Friendly



COLOR SHOWN:
DR GINGER TOFFEE(LEFT) , DR RED VELVET (RIGHT)



VIVI 12"

AVAILABLE COLORS :

- 1, 1B, 2, S1B/30,
- DRAGON FRUIT,
- DR GINGER TOFFEE,
- DR RED VELVET,
- DR2/CHOCOLATE SWIRL,
- DR2/GOLDEN AMBER,
- DR4/HONEY GOLD

SPECIAL COLORS



converti-cap®
PREMIUM SYNTHETIC FIBERS



Wet & Wavy-inspired, Island Curls has a cap that's made to create a million curly, summer styles with no glue needed!

- Limitless styling possibilities
- Reveal your own hairline for a realistic look
- Breathable And Flexible Cap That Lays Flat
- Adjustable Drawstring For A Custom Fit
- Premium Synthetic Fibers
- Bacteria-Resistant Cap



COLOR SHOWN :
DR HAZELNUT BROWN (LEFT), 1B (RIGHT)



ISLAND CURLS 24"



AVAILABLE COLORS :

- 1, 1B, 2, S1B/30,
- DR GINGER BROWN,
- DR HAZELNUT BROWN,
- DR HONEY BROWN,
- DR MULLED WINE,
- DR2/CHOCOLATE SWIRL,
- DR2/GOLDEN HONEY

SPECIAL COLORS



What is SleekLay® Part?

More hand-tied lace near the part creates a sleek, flat look. Get a hump-less, laid finish with no heat styling required.

REGULAR



SLEEKLAY PART



FLAT LACE FINISH

ORIGINAL FLAT LACE FINISH



DEEP-C LACE PART



KEY FEATURES

- Wider Hand-Tied Lace Part
- Deep C-Shape Side Parting (Only Deep-C Lace Part)
- Extra Hand-Tied Lace Edges
- Pre-plucked Hairline
- Natural Baby Hairs
- Hump-less, Laid Finish
- HD Transparent Lace
- Heat-Friendly

CONSTRUCTION

- Cap Size : 21.5" Circumference
- Original Flat Lace Finish : 4.5" Deep Lace Part
- Deep-C Lace Part : 5" Deep & Extreme Side Part



SleekLay®

LACE FRONT WIG Part

Lays Flatter, Lays Better.



COLOR SHOWN : DRFF2/GINGER BROWN

KEOLA 22"

AVAILABLE COLORS :

1, 1B, 2, 613, DR CHOCOLATE SWIRL, DR JAVA FROST, DR2/CINNAMON WINE, DR4/GOLDEN HONEY BLONDE, DRFF GOLDEN AMBER, DRFF2/GINGER BROWN



COLOR SHOWN : DR RED VELVET

PERI 10"

AVAILABLE COLORS :
1, 1B, 2, 613, DR CHOCOLATE SWIRL, DR COPPER ORANGE, DR RED VELVET, DR4/GOLDEN HONEY BLONDE, DR4/NATURAL HONEY, DRFF2/GINGER BROWN



COLOR SHOWN : DR4/BL SANDY BLONDE

LILIBETH 20"

AVAILABLE COLORS :
1, 1B, 2, 613, DR CHOCOLATE SWIRL, DR4/BL SANDY BLONDE, DR4/SUMMBER BLONDE, DRFF BLACK CHERRY, DRFF HONEY BROWN, DRFF2/GINGER COPPER



COLOR SHOWN : DR4/SUMMBER BLONDE

CHANELLE 24"

AVAILABLE COLORS :
1, 1B, 2, 613, CHOCOLATE FROST, CINNAMON SPICE, GOLDEN AMBER, GOLDEN PEACH, RED VELVET, DR2/SANDSTONE BLONDE, DR4/SUMMBER BLONDE



COLOR SHOWN : 3DRFF WHEAT BLONDE

NOALANI 28"

AVAILABLE COLORS :
1, 1B, 2, 613, CHOCOLATE FROST, RED VELVET, DR2/CINNAMON SPICE, DR2/HAZELNUT, 3DRFF WHEAT BLONDE, 3DRFF AMBER BLONDE



COLOR SHOWN : 3DRFF WHEAT BLONDE

ELMIRAH 34"

AVAILABLE COLORS :
1, 1B, 2, 613, CHOCOLATE FROST, RED VELVET, DR2/CINNAMON SPICE, DR2/HAZELNUT, DR4/CREAM BLONDE, 3DRFF AMBER BLONDE, 3DRFF WHEAT BLONDE



COLOR SHOWN : DRST2/CHOCOLATE CARAMEL

NYLA 14"

AVAILABLE COLORS :
1, 1B, 2, 613, DR HAVANA BROWN, DR4/GOLDEN HONEY BLONDE, DRST2/CHOCOLATE CARAMEL, DRFF GOLDEN AMBER, DRFF RED VELVET, DRFF2/GINGER BROWN



BRIZELLA 18"

DARIANA 20"

GENEVIVE 22"

GEOVANNA 22"

MARIPOSA 22"

ANALIA 24"

IDINA 26"

JOANNA 26"

AVAILABLE COLORS :
1, 1B, 2, CHOCOLATE FROST, DRFF BLACK CHERRY,
DRFF HONEY BROWN, DRFF SUNKISS BROWN,
DRFF2/BUTTERSCOTCH, DRFF2/CINNAMON SPICE

AVAILABLE COLORS :
1, 1B, 2, 613, DR CHOCOLATE SWIRL,
DR4/BL SANDY BLONDE, DR4/GOLDEN AMBER,
DRFF BLACK CHERRY, DRFF HONEY BROWN, DRFF2/
CINNAMON SPICE, DRFF2/GINGER COPPER

AVAILABLE COLORS :
1, 1B, 2, DR CHOCOLATE SWIRL,
DR4/BL SANDY BLONDE, DR4/GOLDEN AMBER,
DRFF BLACK CHERRY, DRFF SUNKISS BROWN,
DRFF2/GINGER COPPER, ROM IRISH COFFEE

AVAILABLE COLORS :
1, 1B, 2, 613, DR CHOCOLATE SWIRL,
DR4/HONEY GINGER, DR4/SUMMER BLONDE,
DRFF BLACK CHERRY, DRFF HONEY BROWN,
DRFF2/CINNAMON SPICE,
DRFF4/FROSTED DARK BLONDE

AVAILABLE COLORS :
1, 1B, 2, 613, CHOCOLATE COVERED HONEY,
DR4/GOLDEN AMBER, DRFF BLACK CHERRY,
DRFF HONEY BROWN, DRFF2/CINNAMON SPICE,
DRFF2/GINGER COPPER, 3DRFF SALTED CARAMEL

AVAILABLE COLORS :
1, 1B, 2, 613, DR CHOCOLATE SWIRL,
DR2/GOLDEN HONEY BLONDE, DR4/GOLDEN AMBER,
DRFF BLACK CHERRY, DRFF HONEY BROWN,
DRFF2/GINGER COPPER,
DRFF4/FROSTED DARK BLONDE

AVAILABLE COLORS :
1, 1B, 2, 613, CHOCOLATE FROST,
CINNAMON SPICE, GOLDEN AMBER, GOLDEN PEACH,
RED VELVET, DR2/SANDSTONE BLONDE,
DR4/SUMMER BLONDE

AVAILABLE COLORS :
1, 1B, 2, 613, DR CHOCOLATE SWIRL,
DR4/BL SANDY BLONDE, DR4/GOLDEN AMBER,
DRFF BLACK CHERRY, DRFF HONEY BROWN,
DRFF2/GINGER COPPER



LARISSA 28"

SHALINI 28"

DALILAH 34"

ZAYLEE 16"

ASMARA 26"

DONATELLA 28"

APOLIA 18"

PERLA 22"

AVAILABLE COLORS :
1, 1B, 2, 613, DR4/GOLDEN HONEY BLONDE,
DRFF CHOCOLATE TOFFEE, DRFF GOLDEN AMBER,
DRFF RED VELVET, DRFF2/GINGER BROWN

AVAILABLE COLORS :
1, 1B, 2, 613, DR RED VELVET, DR2/CINNAMON SPICE,
DR4/BL GOLDEN HONEY, DR4/COPPER GOLD,
DRFF CARAMEL MOCHA, DRFF CHOCOLATE TRUFFLE

AVAILABLE COLORS :
1, 1B, 2, CHOCOLATE FROST, RED VELVET,
DR2/CINNAMON SPICE, DR2/HAZELNUT,
DR4/CREAM BLONDE, 3DRFF AMBER BLONDE,
3DRFF WHEAT BLONDE

AVAILABLE COLORS :
1, 1B, 2, 4, 613, DR CHOCOLATE SWIRL,
DR2/CINNAMON WINE, DR2/GINGER BROWN,
DR4/GOLDEN HONEY BLONDE, DRFF GOLDEN AMBER

AVAILABLE COLORS :
1, 1B, 2, 613, CHOCOLATE FROST,
DR2/CINNAMON SPICE, DR2/HAZELNUT,
DR4/HONEY BLONDE, DRFF BLACK CHERRY,
3DRFF AMBER BLONDE

AVAILABLE COLORS :
1, 1B, 2, 613, DR RED VELVET, DRST GINGER BROWN,
DR2/BL BROWN SUGAR, DR2/CINNAMON SPICE,
DRFF CHOCOLATE TRUFFLE, DRFF4/GOLDEN HONEY

AVAILABLE COLORS :
1, 1B, 2, 613, CHOCOLATE FROST, DR4/CREAM BLONDE,
DRFF BLACK CHERRY, DRFF HONEY BROWN,
DRFF SUNKISS BROWN, DRFF2/CINNAMON SPICE

AVAILABLE COLORS :
1, 1B, 2, 613, CHOCOLATE COVERED HONEY,
BLACK CHERRY MOUSSE, DR2/HAZELNUT,
DR4/GOLDEN HONEY MELT, DR4/HONEY GINGER,
DRFF2/CINNAMON SPICE



**5" DEEP
EXTREME SIDE PART**



COLOR SHOWN : DR CHOCOLATE SWIRL
NELLA 12"

AVAILABLE COLORS :
1, 1B, 2, 613, CHOCOLATE SWIRL, DR4/HONEY GINGER,
DR4/SUMMER BLONDE, DRFF BLACK CHERRY, DRFF HONEY BROWN,
DRFF2/GINGER COPPER



COLOR SHOWN : DR4/BL SANDY BLONDE
ARA 14"

AVAILABLE COLORS :
1, 1B, 2, 613, DR CHOCOLATE SWIRL, DR4/BL SANDY BLONDE,
DR4/GOLDEN AMBER, DRFF BLACK CHERRY, DRFF HONEY BROWN,
DRFF2/CINNAMON SPICE, DRFF2/GINGER COPPER



COLOR SHOWN : MC GOLDEN CARAMEL SPLASH
VERNISHA 18"

AVAILABLE COLORS :
1, 1B, 2, 613, DR CHOCOLATE SWIRL, DRFF BLACK CHERRY,
DRFF SUNKISS BROWN, DRFF2/GINGER COPPER,
MC GOLDEN CARAMEL SPLASH



COLOR SHOWN : DR2/HAZELNUT
DARBY 32"

AVAILABLE COLORS :
1, 1B, 2, DR2/CINNAMON SPICE, DR2/HAZELNUT, DR4/CREAM BLONDE,
DRFF BLACK CHERRY, DRFF SUNKISS BROWN,
3DRFF AMBER BLONDE, 3DRFF WHEAT BLONDE



COLOR SHOWN : DRFF2/GINGER COPPER
SHADORA 14"

AVAILABLE COLORS :
1, 1B, 2, 613, DR CHOCOLATE SWIRL, DR2/GOLDEN HONEY BLONDE,
DR4/HONEY GINGER, DRFF BLACK CHERRY, DRFF HONEY BROWN,
DRFF SUNKISS BROWN, DRFF2/GINGER COPPER



COLOR SHOWN : DRFF4/CHAMPAGNE
FLARA 16"

AVAILABLE COLORS :
1, 1B, 2, DR CHOCOLATE SWIRL, DR4/STAWBERRY BLONDE,
DRFF BLACK CHERRY, DRFF SUNKISS BROWN,
DRFF2/GINGER COPPER, DRFF4/CHAMPAGNE



COLOR SHOWN : DRFF2/GINGER COPPER
ANTALIA 18"

AVAILABLE COLORS :
1, 1B, 2, 613, DR CHOCOLATE SWIRL, DR4/CREAM BLONDE,
DRFF BLACK CHERRY, DRFF SUNKISS BROWN,
DRFF2/GINGER COPPER, DRFF4/FROSTED DARK BLONDE



COLOR SHOWN : DRFF SUNKISS BROWN
EMERALDA 18"

AVAILABLE COLORS :
1, 1B, 2, DR CHOCOLATE SWIRL, DR2/GOLDEN HONEY BLONDE,
DR4/STRAWBERRY BLONDE, DRFF BLACK CHERRY,
DRFF SUNKISS BROWN, DRFF2/GINGER COPPER



COLOR SHOWN : DR4/GOLDEN AMBER
EMMERIE 20"

AVAILABLE COLORS :
1, 1B, 2, 613, DR CHOCOLATE SWIRL, DR2/SANDSTONE BLONDE,
DR4/GOLDEN AMBER, DRFF BLACK CHERRY, DRFF HONEY BROWN,
DRFF2/GINGER COPPER



COLOR SHOWN : DRFF4/CHAMPAGNE
LAVETTE 22"

AVAILABLE COLORS :
1, 1B, 2, 613, DR CHOCOLATE SWIRL, DR4/GOLDEN AMBER,
DRFF BLACK CHERRY, DRFF HONEY BROWN,
DRFF2/GINGER COPPER, DRFF4/CHAMPAGNE



COLOR SHOWN : DR2/CINNAMON SPICE
OSIANNA 26"

AVAILABLE COLORS :
1, 1B, 2, 613, DR CHOCOLATE SWIRL, DR2/CINNAMON SPICE,
DR4/CREAM BLONDE, DRFF BLACK CHERRY, DRFF HONEY BROWN

premium
purple pack®

100% HUMAN HAIR



NEW

4" x 4"

100% HUMAN HAIR
HD LACE CLOSURE

100% Fully
HAND-TIED



STYLE & COLOR SHOWN : PURPLE PACK YAKI 20" | 1B

NOW CURLY STYLES ARE AVAILABLE!



COLOR SHOWN : 1B

DEEP WAVE



COLOR SHOWN : 1B/30

HAWAIIAN WAVE



COLOR SHOWN : C1B/30

FRENCH KISS



COLOR SHOWN : 1B/BU

WATER WAVE

PURPLE PACK YAKI

AVAILABLE LENGTHS : 8", 10", 12", 14", 16", 18", 20", 22", 24", 26", 28", 30"

AVAILABLE COLORS :

8" : 1, 130S, 1B, 2, 27, 30, 33, 350, 4, 425, 950, BURGUNDY, C1B/30, C1B/33, C27/30, C4/30
10", 12", 14" : 1, 130S, 1B, 2, 27, 30, 33, 350, 4, 425, 613, 950, BURGUNDY, C1B/30, C1B/33, C27/30, C27/30/33, C27/613, C4/27/30, C4/30, T1B/27, T1B/27/30, T1B/30, T1B/350, T1B/BURGUNDY, T1B/RED
16", 18" : 1, 130S, 1B, 2, 27, 30, 33, 350, 4, 425, 613, 950, BURGUNDY, C1B/30, C1B/33, C27/30/33, C27/613, C4/27/30, C4/30, T1B/27, T1B/27/30, T1B/30, T1B/350, T1B/BURGUNDY, T1B/RED
20" : 1, 1B, 2, 4 | 22", 24", 26", 28", 30" : 1, 1B, 2

PURPLE PACK CURLY

AVAILABLE STYLES :
DEEP WAVE, HAWAIIAN WAVE : 10"/ 12"/ 14"/ 18"
FRENCH KISS, WATER WAVE : 10"/ 12"/ 14"

AVAILABLE COLORS :

1, 1B, 2, 950, C1B/30, C4/30, T1B/27, T1B/30, T1B/BU

PURPLE PACK CLOSURE

AVAILABLE LENGTHS : 10", 12", 14"
AVAILABLE COLORS : 1, 1B, 2