

APRIL 2024

®

Outre



BOHEMIAN
NATURAL

DEEP
NATURAL BLACK

OCEAN
NATURAL

Outre
85 Oxford Drive,
Moonachie, NJ 07074
USA

SUGARPUNCH
THE HAIR THAT
PACKS A PUNCH

IN THIS ISSUE

Experience beauty with a bite! Introducing SUGARPUNCH—the hair that packs a punch. These strands of hair won't back down—they're strong, smooth, and sweet. Our hair is unprocessed to keep its strong structure to resist tangles with ease during multiple wears and washes.

But this hair is more than just powerful; it's also pretty. Our one-directional, double-drawn strands are thick from root to tip and ready to be dyed and customized however you choose. Thick, reliable, and reusable, SUGARPUNCH can handle any style you throw at it.

BRAID 03 X-Pression Twisted Up NEW COLORS	SPRINGY AFRO TWIST 16" 3X, 24" 3X PRE-STRETCHED BRAID 42" 3X PRE-STRETCHED BRAID 52" 3X	BRAID 04 X-Pression Twisted Up	BOHO WET & WAVY VIBE BOX BRAID 24" 3X BOHO WET & WAVY VIBE OCEAN BRAID 24" 3X BOHO WET & WAVY VIBE BEACH BRAID 30" 3X	HH-BULK 06 My TRESSES 100% UNPROCESSED HUMAN HAIR GOLD LABEL PRE-STRETCHED 100% UNPROCESSED HUMAN HAIR BULK	ALL BULK ITEMS	HH-BLEND BULK 08 purple Brazilian BUNDLE PRE-STRETCHED	DOMINICAN CURL BULK LOOSE DEEP BULK NATURAL FRENCH BULK STRAIGHT BULK
HH-WEAVE 10 Sugar Punch 100% UNPROCESSED REMY HUMAN HAIR	MULTI PACK 3PCS STRAIGHT, BODY 10" 12" 14" / 12" 14" 16" / 14" 16" 18" / 16" 18" 20" / 18" 20" 22" / 20" 22" 24"	HH-WEAVE 12 Sugar Punch 100% UNPROCESSED REMY HUMAN HAIR	SINGLE BOHEMIAN 10", 12", 14", 16", 18", 20", 22", 24" DEEP 10", 12", 14", 16", 18", 20", 22", 24" OCEAN 10", 12", 14", 16", 18", 20", 22", 24"	HH-WEAVE 14 VELVET Lush REMY 100% REMY HUMAN HAIR	VELVET LUSH 10", 12", 14", 16", 18", 20", 22", 24"	LACE WIG 16 PERFECT HAIRLINE Swoop SERIES	SWOOP 6 SWOOP 7
LACE WIG 18 PERFECT HAIRLINE	ATLAS BRIELLA CHARLYN	LACE WIG 20 melted HAIRLINE SWIRLISTA LACE FRONT WIG	SWIRL 107 SWIRL 108 SWIRL 109	LACE WIG 22 melted HAIRLINE LACE FRONT WIG	KAIRI	LACE PART WIG 23 THE DAILY WIG LACE PART WIG	AVRIL
LACE WIG 24 SleekLay Part	SAHARI ALUNA	LACE WIG 26 Lace front LACE FRONT WIG	FLEUR GAIA ZAYDELL HUDSON ALIKA NURU	LACE WIG 30 EveryWear LACE FRONT WIG	EVERY 37 EVERY 38	FULL WIG 32 wigpop SYNTHETIC FULL WIG Style SELECTS	DANETTE ELIN FARRA
HALF WIG 34 Quick WEAVE	LUMI	PONYTAIL 35 Outre Pretty Quick PREMIUM SYNTHETIC FIBER PONY	OLA				

X-Pression Twisted Up SPRINGY AFRO TWIST



NEW COLOR 16" 24"



WILD CHERRY

SPRINGY AFRO TWIST
16" 3X, 24" 3X

100% KANEKALON BRAID // TWISTED UP, X-PRESSION PRE-STRETCHED

X-Pression PRE-STRETCHED



Spice up this year's springtime braids, locs, and twists with our new Wild Cherry and Mint colors from XP Pre-Stretched Braid and Springy Afro Twist items.

NEW COLORS 42" 52"



MINT



WILD CHERRY

PRE-STRETCHED BRAID
42" 3X, 52" 3X



COLOR SHOWN : 2T1B/425

COLOR SHOWN : CT/27

COLOR SHOWN : CT/MACCHIATO

X-Pression® Twisted Up®

Ready, set, boho and go! We've got a new selection of ready-to-wear Wet & Wavy style Boho Braids that are fast and DIY-friendly.

You've booked your vacation, now let's plan your look. Get the new fast & easy Vibe Box, Ocean and Beach crochet braids.

- Premium Synthetic Fiber
- Quick, Long Lasting Protective Style
- Soft Texture
- Lightweight
- Flame Retardant



BOHO WET & WAVY VIBE BOX BRAID 24" 3X

BOHO WET & WAVY VIBE OCEAN BRAID 24" 3X

BOHO WET & WAVY VIBE BEACH BRAID 30" 3X

AVAILABLE COLORS

1, 1B, 2, 350, MACCHIATO, DRAGON FRUIT, 2T1B/27, 2T1B/30, 2T1B/350, 2T1B/425



AVAILABLE COLORS

1, 1B, 2, 4, CT/27, CT/30, CT/COPPER ORANGE, CT/425, CT/MACCHIATO, CT/DRAGON FRUIT

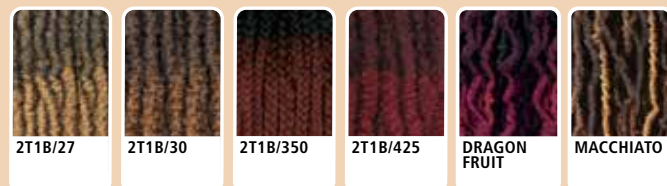


AVAILABLE COLORS

1, 1B, 2, 4, CT/27, CT/30, CT/COPPER ORANGE, CT/425, CT/MACCHIATO, CT/DRAGON FRUIT



SPECIAL COLORS



SPECIAL COLORS





NATURAL DEEP BULK
10", 12", 14", 18", 22", 24"

AVAILABLE LENGTHS
10", 12", 14", 18", 22", 24"
AVAILABLE COLORS
NATURAL BLACK, NATURAL, 27, 30, 425, T1B/27, T1B/30, T1B/425



LOOSE DEEP BULK 18"

AVAILABLE COLORS
NATURAL BLACK, NATURAL, 27, 30, 425, T1B/27, T1B/30, T1B/425



NATURAL 4C KINKY BULK 12"

AVAILABLE COLORS
NATURAL, NATURAL BLACK, 27, 30, 425, DEEP BLUE, DEEP PURPLE, HOT PINK



W&W SPLASH CORK BULK 14", 18", 24"

AVAILABLE LENGTHS
14", 18", 24"
AVAILABLE COLORS
NATURAL, NATURAL BLACK



NATURAL STRAIGHT BULK 14", 18", 24"

AVAILABLE LENGTHS
14", 18", 24"
AVAILABLE COLORS
NATURAL, NATURAL BLACK



NATURAL BODY BULK 18", 24"

AVAILABLE LENGTHS
18", 24"
AVAILABLE COLORS
NATURAL, NATURAL BLACK



GYPSY WAVE BULK 18", 24"

AVAILABLE LENGTHS
18", 24"
AVAILABLE COLORS
NATURAL, NATURAL BLACK

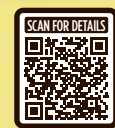


W&W SPLASH DEEP BULK 18", 24"

AVAILABLE LENGTHS
18", 24"
AVAILABLE COLORS
NATURAL, NATURAL BLACK

My TRESSES
100% UNPROCESSED HUMAN HAIR
GOLD LABEL
BULK
PRE-STRETCHED
100% UNPROCESSED HUMAN HAIR BULK

Unprocessed. Top Quality. Pre-Stretched. And the perfect pick for your next boho look.



- 100% Unprocessed Human Hair
- Pre-Stretched & Gentle on Fingers
- 9+ Quality Grade Bundle Hair
- Soft on Skin & Lightweight
- Comfortable, Itch-Free Wear
- Dye & Customize

AVAILABLE COLORS





DOMINICAN CURL BULK 18" / 24"

AVAILABLE LENGTHS : 18", 24"
AVAILABLE COLORS :
JET BLACK, NATURAL BLACK, NATURAL, 27, 30, 130S,
425, 950, C1B/30, C1B/350, C1B/425, C4/27/30,
C950/425/350, DR27, DR30, DR425, COPPER ORANGE



LOOSE DEEP BULK 18" / 24"

AVAILABLE LENGTHS : 18", 24"
AVAILABLE COLORS :
JET BLACK, NATURAL BLACK, NATURAL, 27, 30, 130S,
425, 950, C1B/30, C1B/350, C1B/425, C4/27/30,
C950/425/350, DR27, DR30, DR425, COPPER ORANGE



NATURAL FRENCH BULK 18" / 24"

AVAILABLE LENGTHS : 18", 24"
AVAILABLE COLORS :
JET BLACK, NATURAL BLACK, NATURAL,
27, 30, 425, 950



STRAIGHT BULK 18" / 24"

AVAILABLE LENGTHS : 18", 24"
AVAILABLE COLORS :
JET BLACK, NATURAL BLACK, NATURAL,
27, 30, 425, 950

premium
purple pack
Brazilian
BUNDLE
100% HUMAN HAIR PREMIUM BLEND

BULK
PRE-STRETCHED
HUMAN HAIR BLEND BULK

Affordable, blendable, and designed for the newest bohemian looks.

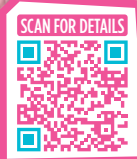
- 100% Human Hair Premium Blend
- Pre-Stretched & Tangle Free
- Lightweight, Soft on Skin, Itch-Free Wear
- Curling Iron Safe
- Perfect for Boho Styles, Knotless Styles, Goddess Braids and More



SPECIAL COLORS



MULTI PACK

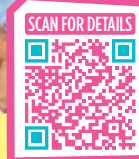


STRAIGHT

COLOR SHOWN : NATURAL

AVAILABLE COLORS **NATURAL BLACK, NATURAL**

AVAILABLE LENGTHS
10", 12", 14" | 12", 14", 16" | 14", 16", 18"
16", 18", 20" | 18", 20", 22" | 20", 22", 24"



BODY

COLOR SHOWN : NATURAL BLACK

AVAILABLE COLORS **NATURAL BLACK, NATURAL**

AVAILABLE LENGTHS
10", 12", 14" | 12", 14", 16" | 14", 16", 18"
16", 18", 20" | 18", 20", 22" | 20", 22", 24"



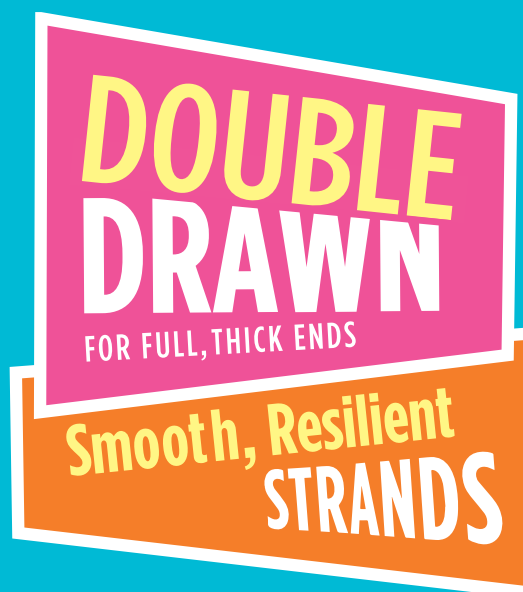
100% UNPROCESSED REMY HUMAN HAIR



SUGARPUNCH's 3-in-1 pack features a triple-punch of premium features that make it tangle-resistant, shampoo-friendly, and durable enough to wear multiple times. It is unprocessed, double-drawn, and one-directional.



STRAIGHT **BODY**



- 100% Unprocessed Remy Human Hair
- Double Drawn for Thick, Lush Ends
- One Directional Cuticles for Tangle Resistance
- Smooth, Resilient Hair & Long-Lasting Bundles
- Bleach & Dye, Wash & Reuse • No Shedding



Sugar Punch™

100% UNPROCESSED REMY HUMAN HAIR

Remy

Experience a sugar rush of curly, lush bundles designed for girls who love curls. They're thick from root to tip and hold up to multiple washes and wears.

- 100% Unprocessed Remy Human Hair
- Double Drawn for Thick, Lush Ends
- One Directional Cuticles for Tangle Resistance
- Smooth, Resilient Hair & Long-Lasting Bundles
- Bleach & Dye, Wash & Reuse
- No Shedding
- Available in Curly, Body and Straight Styles

BOHEMIAN

COLOR SHOWN : NATURAL



DEEP

COLOR SHOWN : NATURAL BLACK



OCEAN

COLOR SHOWN : NATURAL



DOUBLE DRAWN

FOR FULL, THICK ENDS

Smooth, Resilient STRANDS

AVAILABLE COLORS : NATURAL BLACK, NATURAL
AVAILABLE LENGTHS : 10", 12", 14", 16", 18", 20", 22", 24"

AVAILABLE COLORS : NATURAL BLACK, NATURAL
AVAILABLE LENGTHS : 10", 12", 14", 16", 18", 20", 22", 24"

AVAILABLE COLORS : NATURAL BLACK, NATURAL
AVAILABLE LENGTHS : 10", 12", 14", 16", 18", 20", 22", 24"



VELVET Lush™

REMY

100% REMY HUMAN HAIR

- 100% Remy Human Hair / One-Directional Cuticles
- Moisture-Rich
- Wear, Wash and Repeat
- Smooth, Soft, & Strong
- Healthy Natural Luster
- Full & Thick from Weft to Tip
- Bone Straight
- Double Drawn Hair

AVAILABLE COLORS :
1, 1B, 2

AVAILABLE LENGTHS :
10", 12", 14", 16", 18", 20", 22", 24"



MULTIPLE WASHES & WEARS

WORRY-FREE WASHING	AFTER WASHING	
<ul style="list-style-type: none"> • MULTIPLE WEARS • MULTIPLE WASHES • MADE TO LAST 	<ul style="list-style-type: none"> • NOT WASH & RE-WEAR FRIENDLY • FRIZZY, DRY & HARD TO DETANGLE 	



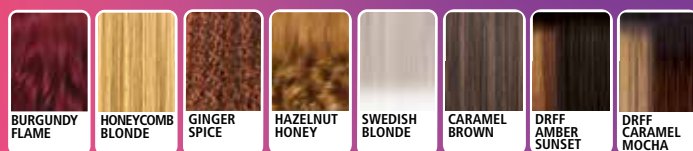
COLOR SHOWN : HONEYCOMB BLONDE (LEFT), CARAMEL BROWN (RIGHT)

SWOOP 6 16"



COLOR SHOWN : BURGUNDY FLAME, CARAMEL BROWN, CARAMEL BROWN (LEFT TO RIGHT)

AVAILABLE COLORS
1, 1B, 2, BURGUNDY FLAME, HONEYCOMB BLONDE, GINGER SPICE, HAZELNUT HONEY, SWEDISH BLONDE, CARAMEL BROWN, DRFF AMBER SUNSET, DRFF CARAMEL MOCHA



COLOR SHOWN : HONEYCOMB BLONDE

PERFECT HAIRLINE Swoop™ SERIES

LACE FRONTAL WIG

Get that new, super on-trend springtime look with Swoop 6's soft barrel curl style then create baby hairs for an extra touch of glam.

Create that Instagram look with our Swoop 7 style, an ultra-long wavy unit upgraded with more lace space for styling swooped edges.

PERFECTED HAND-TIED LACE FRONTAL, HAIRLINE & SIDEBURNS

- Fully Hand-Tied 13" x 4" Frontal
- Deeper, Wider, Ear-to-Ear Soft HD Lace
- Pre-Plucked with Precision
- Super Natural Shape and Density

EASY STYLING & SIMPLE INSTALLS

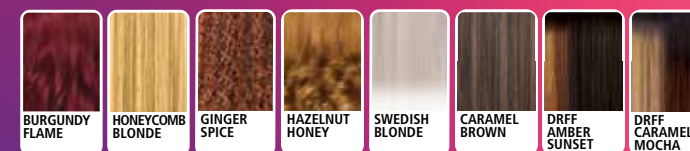
- More HD Lace Space to Swoop your Baby Hairs
- Pre-Styled Volume Lift at Lace Area
- Pre-Attached Wide Elastic Band for Glueless Installs
- Heat-Styling Friendly

SWOOP 7 28"



COLOR SHOWN : DRFF CARAMEL MOCHA, 1B, HONEYCOMB BLONDE (LEFT TO RIGHT)

AVAILABLE COLORS
1, 1B, 2, BURGUNDY FLAME, HONEYCOMB BLONDE, GINGER SPICE, HAZELNUT HONEY, SWEDISH BLONDE, CARAMEL BROWN, DRFF AMBER SUNSET, DRFF CARAMEL MOCHA



MORE LACE SPACE FOR SWOOPS



DEEPER, MORE HAND-TIED LACE AREA & BABY HAIRS STYLING SPACE





COLOR SHOWN : CR FUCHSIA DREAM



COLOR SHOWN : DR4/CHOCOLATE GOLD



COLOR SHOWN : HONEY BUTTER



PERFECT HAIRLINE™

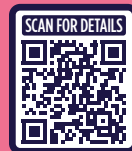
FULLY HAND-TIED 13"X6" LACE WIG

Pick the part and select the shade! Atlas and Briella are classic styles with a touch of glamour that's made to match your whims.

Put on Charlyn's big, full curls and take on her charm: sweet, flirty, and carefree.

- Fully Hand-Tied 13" x 6" Frontals
- Ear-to-Ear Soft HD Transparent Lace
- Natural Baby Hairs
- Comes With a Pre-Attached Elastic Band
- Fast, Easy & Effortless Glueless Installs
- Pre-Plucked Hairline
- Heat-Styling Friendly

ATLAS 22"



BRIELLA 20"



CHARLYN 20"



COLOR SHOWN : SOFT BLONDE, 3DR4/CHESTNUT OMBRE, CR FUCHSIA DREAM (LEFT TO RIGHT)



COLOR SHOWN : DR4/RICH AUBURN, DRFF4/GOLDEN HONEY BROWN, DR4/CHOCOLATE GOLD (LEFT TO RIGHT)



COLOR SHOWN : DRFF4/GINGER COPPER, DRFF4/HONEY AUBURN, HONEY BUTTER (LEFT TO RIGHT)

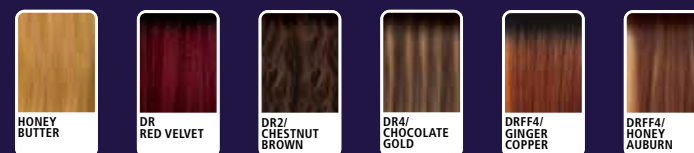
AVAILABLE COLORS
1, 1B, 2, COPPER, NATURAL BROWN, SOFT BLONDE, CR FUCHSIA DREAM, DRP PASSION ROSE, DR4/HONEY BLONDE, 3DR2/GINGER OMBRE, 3DR4/CHESTNUT OMBRE



AVAILABLE COLORS
1, 1B, 2, HONEY BUTTER, RUBY ESPRESSO, DR4/CHOCOLATE GOLD, DR4/RICH AUBURN, DRFF4/COPPER BALAYAGE, DRFF4/GOLDEN HONEY BROWN, DRFF4/HONEY AUBURN, DRST4/HONEY WALNUT



AVAILABLE COLORS
1, 1B, 2, HONEY BUTTER, DR RED VELVET, DR2/CHESTNUT BROWN, DR4/CHOCOLATE GOLD, DRFF4/GINGER COPPER, DRFF4/HONEY AUBURN



13 X 6





COLOR SHOWN : DRST2/CHOCOLATE CARAMEL



COLOR SHOWN : DRST6/VANILLA TART



COLOR SHOWN : DRST VAMPIRE RED

melted
HAIRLINE.
SWIRLISTA™
L A C E F R O N T W I G

Finesse your edges, bounce your curls then strut your style in Swirl 107.

Swirl 108 features sultry, soft, Hollywood curls paired with a spacious lace area and trendy c-shape part.

Sleek meets cool with Swirl 109. It's 34" of bold length for only the ultra-stylish.

PERFECTED HAND-TIED LACE PART, HAIRLINE & SIDEBURNS

- More Space to Finesse your Baby Hairs
- Pre-Plucked with Precision
- Super Natural Shape and Density
- 5" Deep C-Shape Parting

BEAUTIFUL BLENDING & EASY INSTALLS

- Pre-Attached Wide Elastic Band for Glueless Installs
- Redesigned ComfortFit Ear Contour
- Soft HD Transparent Lace

SWIRL 107 14"



COLOR SHOWN : SANDY BLONDE, SPICED COGNAC, DRST2/CHOCOLATE CARAMEL (LEFT TO RIGHT)

AVAILABLE COLORS
1, 1B, 2, BURGUNDY, FROSTED ASH BLONDE, GOLDEN AMBER, SANDY BLONDE, SPICED COGNAC, DR GINGER TOFFEE, DR2/CHOCOLATE SWIRL, DRST2/CHOCOLATE CARAMEL

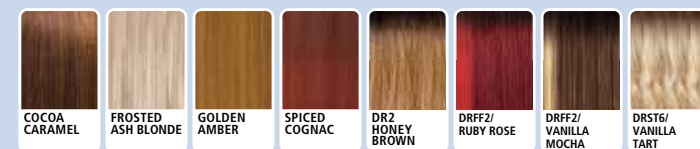


SWIRL 108 18"



COLOR SHOWN : GOLDEN AMBER, DR2/HONEY BROWN, DRST6/VANILLA TART (LEFT TO RIGHT)

AVAILABLE COLORS
1, 1B, 2, COCOA CARAMEL, FROSTED ASH BLONDE, GOLDEN AMBER, SPICED COGNAC, DR2/HONEY BROWN, DRFF2/RUBY ROSE, DRFF2/VANILLA MOCHA, DRST6/VANILLA TART

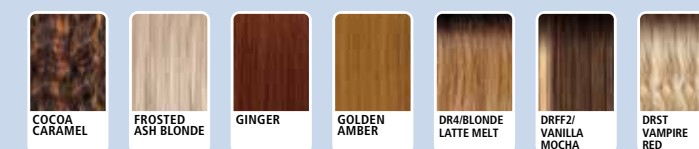


SWIRL 109 34"

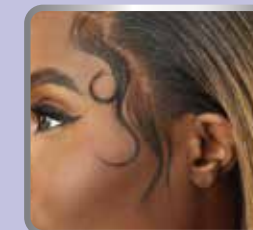


COLOR SHOWN : GOLDEN AMBER, GOLDEN AMBER, DRST VAMPIRE RED (LEFT TO RIGHT)

AVAILABLE COLORS
1, 1B, 2, COCOA CARAMEL, FROSTED ASH BLONDE, GINGER, GOLDEN AMBER, DR4/BLONDE LATTE MELT, DRFF2/VANILLA MOCHA, DRST VAMPIRE RED



DEEPER, WIDER HAND-TIED LACE HAIRLINE



5" DEEP C-SHAPE PARTING



melted HAIRLINE



LACE FRONT WIG

With Kairi, you can achieve an effortless look with its touch of texture, a bit of volume, and elevated hairline.

- Soft HD Transparent Lace
- 5" Deep Parting
- Completely Pre-Plucked Hairline & Sideburns
- Pre-Attached Wide Elastic Band for Secure Fit
- Fast, Easy & Effortless Glueless Installs
- Natural Baby Hairs
- Redesigned ComfortFit Ear Contour
- Heat Resistant Fiber



COLOR SHOWN : COCOA CARAMEL

KAIRI 24"



COLOR SHOWN : DR2/SUNSET COPPER, DR2/SUNSET COPPER, COCOA CARAMEL (LEFT TO RIGHT)

AVAILABLE COLORS
1, 1B, 2, 99J, COCOA CARAMEL, FROSTED ASH BLONDE, GINGER, DR2/SUNSET COPPER, DR4/HONEY GOLD, DRFF2/VANILLA MOCHA



COLOR SHOWN : COCOA CARAMEL

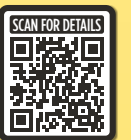
THE DAILY WIG™

PREMIUM SYNTHETIC FIBERS
LACE PART WIG

Easy and sexy come together with this 40" unit. Avril is a bundle-inspired look that's styled in 30 seconds. Just pop-on-and-go!

- Premium Synthetic Fibers
- Pre-Plucked & Hand-Tied Lace I-Part
- Breathable Mesh Cap
- Heat-Styling Friendly

AVRIL 40"



COLOR SHOWN : FROSTED ASH BLONDE, COCOA CARAMEL (LEFT TO RIGHT)

AVAILABLE COLORS
1, 1B, 2, BLUE STEEL, COCOA CARAMEL, FROSTED ASH BLONDE, GINGER, DR HONEY AUBURN, DR RED VELVET





COLOR SHOWN : DRFF6/TIRAMISU

SleekLay[®]

LACE FRONT WIG *Part*

For any woman who loves the spotlight, Sahari's movie-star look will make heads spin and eyes stare with its blonde color options!

- Wider Hand-Tied Lace Part
- Deep C-Shape Side Parting
- Extra Hand-Tied Lace Edges
- Hump-Less, Laid finish
- Pre-Plucked Hairline
- Natural Baby Hairs
- Pre-Attached Wide Elastic Band for Glueless Installs
- Heat-Friendly



COLOR SHOWN : SOFT BLONDE

SleekLay[®]

LACE FRONT WIG *Part*

Add some pizzazz to your appearance with Aluna's face-framing curls and layers. Available in dazzling shades like fiery copper and flamingo pink.

- Wider Hand-Tied Lace Part
- Deep C-Shape Side Parting
- Extra Hand-Tied Lace Edges
- Hump-Less, Laid finish
- Pre-Plucked Hairline
- Natural Baby Hairs
- Pre-Attached Wide Elastic Band for Glueless Installs
- Heat-Friendly

SAHARI 26"



—THE— BLONDE COLLECTION



COLOR SHOWN : 3DRFF AMBER BLONDE, DRFF6/TIRAMISU, DRFF6/TIRAMISU (LEFT TO RIGHT)

AVAILABLE COLORS
1, 1B, 2, SOFT BLONDE, DR4/CREAM BLONDE, DRFF6/TIRAMISU, 3DRFF AMBER BLONDE,
3DRFF BUTTERY BLONDE, 3DRFF IVORY BLONDE, 3DRFF SANDSTONE BLONDE, 3DRFF WHEAT BLONDE



ALUNA 16"



COLOR SHOWN : RICH RED, SOFT BLONDE, SOFT BLONDE (LEFT TO RIGHT)

AVAILABLE COLORS
1, 1B, 2, CHOCOLATE SWIRL, COPPER, FIERY ORANGE, FLAMINGO PINK, RICH RED, SOFT BLONDE,
DR4/CREAM BLONDE, DRFF HONEY BROWN





5" DEEP PARTING

COLOR SHOWN : COCOA CARAMEL



COLOR SHOWN : DRF ESPRESSO BROWN



COLOR SHOWN : 2



Lace front[®]
LACE FRONT WIG

Fleur is confidence in a wig! This easy-to-wear, blunt-cut bob will make every woman feel more beautiful.

With Gaia, experience the elegance of swooping bangs and 22" of lush, layered curls.

You've found your Easter hairstyle. Zaydell combines curtain bangs and long layers to create a flattering holiday look.

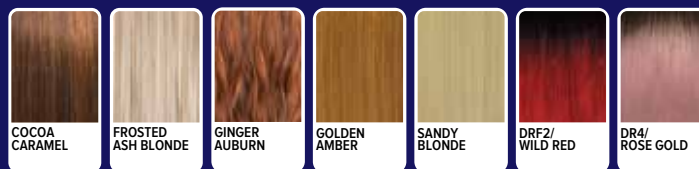
- HD Transparent Lace
- Breathable, Comfortable Cap
- Natural Baby Hairs
- Pre-Plucked Parting
- Fast, Easy & Effortless Glueless Installs
- Heat Resistant Fiber

FLEUR 14"



COLOR SHOWN : DRF2/WILD RED, COCOA CARAMEL, COCOA CARAMEL (LEFT TO RIGHT)

AVAILABLE COLORS
1, 1B, 2, COCOA CARAMEL, FROSTED ASH BLONDE, GINGER AUBURN, GOLDEN AMBER, SANDY BLONDE, DRF2/WILD RED, DR4/ROSE GOLD



GAIA 22"



COLOR SHOWN : GINGER, DRF ESPRESSO BROWN, DRF ESPRESSO BROWN (LEFT TO RIGHT)

AVAILABLE COLORS
1, 1B, 2, GINGER, SANDY BLONDE, DR RED VELVET, DRF ESPRESSO BROWN, DRF2/AUBURN SPICE, DR4/HONEY GOLD

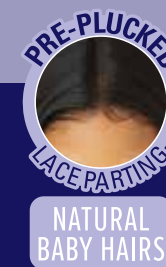
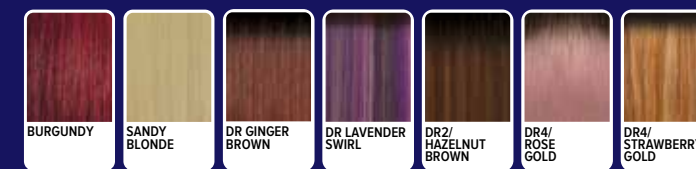


ZAYDELL 26"



COLOR SHOWN : DR4/ROSE GOLD, 2, 2 (LEFT TO RIGHT)

AVAILABLE COLORS
1, 1B, 2, BURGUNDY, SANDY BLONDE, DR GINGER BROWN, DR LAVENDER SWIRL, DR2/HAZELNUT BROWN, DR4/ROSE GOLD, DR4/STRAWBERRY GOLD





5" DEEP PARTING

COLOR SHOWN : DR4/HONEY BLONDE



COLOR SHOWN : GINGER COPPER



COLOR SHOWN : COSMO RED



Lace front[®]
LACE FRONT WIG

Curls have never looked this hot! Hudson is the wig that makes you feel gorgeous and ready for a night out.

Alika has a retro vibe with a modern twist -- trending colors mixed with salon-perfect layers.

Nuru updates the classic sleek bob with wispy curtain bangs for a fresh look.

- HD Transparent Lace
- Breathable, Comfortable Cap
- Natural Baby Hairs
- Pre-Plucked Parting
- Fast, Easy & Effortless Glueless Installs
- Heat Resistant Fiber

HUDSON 24"



COLOR SHOWN : COPPER, DR4/HONEY BLONDE, DR4/HONEY BLONDE (LEFT TO RIGHT)

AVAILABLE COLORS
1, 1B, 2, CHOCOLATE SWIRL, COPPER, SOFT BLONDE, DR2/SANDSTONE BLONDE, DR4/HONEY BLONDE, DRFF HONEY BROWN, DRP PASSION ROSE

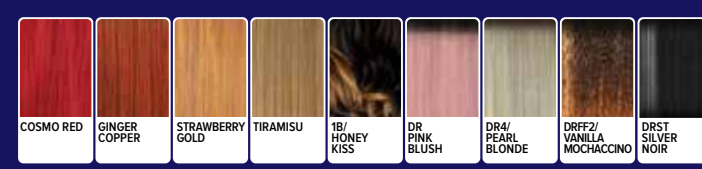


ALIKA 26"



COLOR SHOWN : TIRAMISU, GINGER COPPER, GINGER COPPER (LEFT TO RIGHT)

AVAILABLE COLORS
1, 1B, 2, COSMO RED, GINGER COPPER, STRAWBERRY GOLD, TIRAMISU, 1B/HONEY KISS, DR PINK BLUSH, DR4/PEARL BLONDE, DRFF2/VANILLA MOCHACCINO, DRST SILVER NOIR

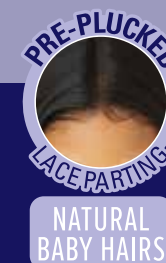


NURU 12"



COLOR SHOWN : GOLDEN AMBER, COSMO RED, COSMO RED (LEFT TO RIGHT)

AVAILABLE COLORS
1, 1B, 2, COSMO RED, GINGER COPPER, GOLDEN AMBER, HAVANA BROWN, TIRAMISU, DR BROWN SUGAR SWIRL, DR PINK BLUSH, DR4/PEARL BLONDE, DRFF2/DARK HONEY MELT





COLOR SHOWN : 1B



COLOR SHOWN : DX GINGER COPPER



COLOR SHOWN : DRFF4/NEAPOLITAN SWIRL

EveryWear™

LACE FRONT WIG

Every37 is truly a working woman's dream wig. The tousled curls boosts this bob's sass while still keeping it classy.

Upgrade your daily style with the new, wavy Every38 wig. Now available in new exclusive colors.

- Ear-to-Ear HD Lace
- Easy, Goes-with-Everything Style
- Heat Resistant Fiber

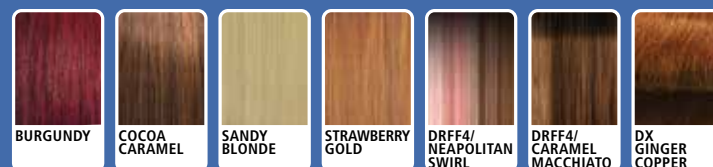


EVERY37 12"



COLOR SHOWN : DX GINGER COPPER, DX GINGER COPPER (LEFT TO RIGHT)

AVAILABLE COLORS
1, 1B, 2, BURGUNDY, COCOA CARAMEL, SANDY BLONDE, STRAWBERRY GOLD, DRFF4/NEAPOLITAN SWIRL, DRFF4/CARAMEL MACCHIATO, DX GINGER COPPER



EVERY38 24"



COLOR SHOWN : DR RED VELVET, DRFF4/NEAPOLITAN SWIRL, DRFF4/NEAPOLITAN SWIRL (LEFT TO RIGHT)

AVAILABLE COLORS
1, 1B, 2, COCOA CARAMEL, GOLDEN AMBER, GOLDEN HONEY BLONDE, SPICED COGNAC, DR LAVENDER SWIRL, DR RED VELVET, DR4/SANDY BLONDE MELT, DRFF4/NEAPOLITAN SWIRL





COLOR SHOWN : BLUE STEEL



COLOR SHOWN : DR4/CANDY PINK



COLOR SHOWN : MILK CHOCOLATE

wigpop®

Style SELECTS

SYNTHETIC FULL WIG

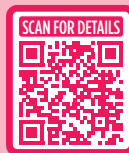
Look stunning without the fuss. Danette is a beginner-friendly wig with delicately trimmed bangs and 22" layers.

Put your face on display with Elin. This unit's flattering, face-framing layers are curled back so your beauty can stand out.

Bangs are the star of this style! Farra features a feathered fringe that can be flipped to the side or worn classically.

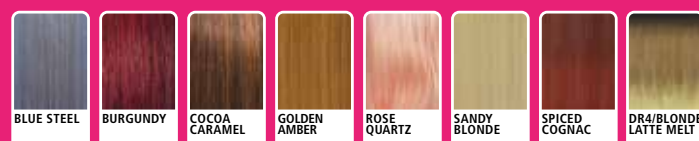
- *Easy to Wear, Elevated Looks*
- *Special Styles: More curls, more textures, more length*
- *Ready to Wear & Go*
- *Heat-Styling Friendly*

DANETTE 22"

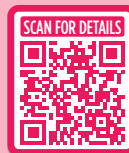


COLOR SHOWN : GOLDEN AMBER, BLUE STEEL, BLUE STEEL (LEFT TO RIGHT)

AVAILABLE COLORS
1, 1B, 2, BLUE STEEL, BURGUNDY, COCOA CARAMEL, GOLDEN AMBER, ROSE QUARTZ, SANDY BLONDE, SPICED COGNAC, DR4/BLENDE LATTE MELT

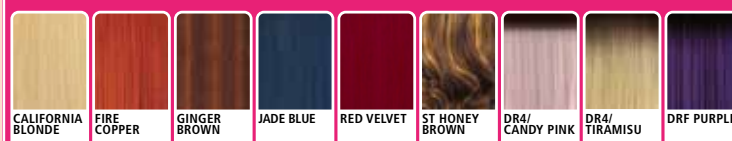


ELIN 18"



COLOR SHOWN : DR4/TIRAMISU, DR4/CANDY PINK, DR4/CANDY PINK (LEFT TO RIGHT)

AVAILABLE COLORS
1, 1B, 2, CALIFORNIA BLONDE, FIRE COPPER, GINGER BROWN, JADE BLUE, RED VELVET, ST HONEY BROWN, DR4/CANDY PINK, DR4/TIRAMISU, DRF PURPLE

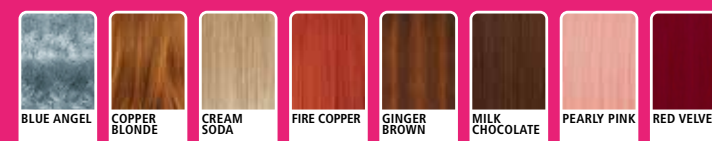


FARRA 20"



COLOR SHOWN : PEARLY PINK, MILK CHOCOLATE, MILK CHOCOLATE (LEFT TO RIGHT)

AVAILABLE COLORS
1, 1B, 2, BLUE ANGEL, COPPER BLONDE, CREAM SODA, FIRE COPPER, GINGER BROWN, MILK CHOCOLATE, PEARLY PINK, RED VELVET



Quick WEAVE®

Get ready for sunnier days and spring holidays with Lumi! This half-wig's springy coils can be worn in endless ways.

- Natural Texture & Volume
- New Cap Lays Flatter
- High Heat Resistant Fiber
- Easy-to-Wear Styles
- Less Leave Out Required



COLOR SHOWN : DRF ESPRESSO BROWN

Outre® Pretty Quick™

PREMIUM SYNTHETIC FIBER

PONY



COLOR SHOWN : 1B

Make an effortless style statement this spring with Ola's ponytail ringlets.

- Natural Look & Soft Texture
- Quick & Easy Styling
- Lightweight Drawstring Construction
- Premium Synthetic Fiber



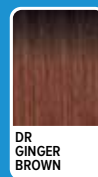
AVAILABLE COLORS

- 1, 1B, 2,
DR GINGER BROWN,
DR RED VELVET,
DR2/CHOCOLATE SWIRL,
DR2/SUNSET COPPER,
DR2/VANILLA COCOA,
DRF ESPRESSO BROWN

LUMI 26"



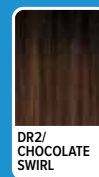
COLOR SHOWN : DR2/VANILLA COCOA, DRF ESPRESSO BROWN, DRF ESPRESSO BROWN (LEFT TO RIGHT)



DR GINGER BROWN



DR RED VELVET



DR2/CHOCOLATE SWIRL



DR2/SUNSET COPPER



DR2/VANILLA COCOA



DRF ESPRESSO BROWN

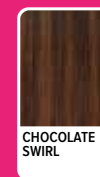
OLA 20"



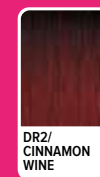
COLOR SHOWN : DR2/TIRAMISU, 1B, 1B (LEFT TO RIGHT)

AVAILABLE COLORS

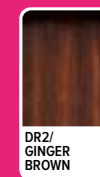
- 1, 1B, 2,
CHOCOLATE SWIRL,
DR2/CINNAMON WINE,
DR2/GINGER BROWN,
DR2/GOLDEN AMBER,
DR2/TIRAMISU,
DRST HONEY BROWN



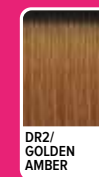
CHOCOLATE SWIRL



DR2/CINNAMON WINE



DR2/GINGER BROWN



DR2/GOLDEN AMBER



DR2/TIRAMISU



DRST HONEY BROWN





SWOOP 6

CARAMEL BROWN



SWOOP 7

HONEYCOMB BLONDE



SWOOP 5

GINGER SPICE

PERFECT
HAIRLINE
*Swoop*TM
SERIES

LACE FRONTAL WIG

**MORE
 LACE SPACE
 FOR SWOOPS**



**DEEPER, MORE
 HAND-TIED
 LACE AREA &
 BABY HAIRS STYLING SPACE**



Slick, swoop, define, and have a perfect hairline every time with Swoop Series.



SWOOP 1

SWEDISH BLONDE



SWOOP 2

BURGUNDY FLAME



SWOOP 3

GINGER SPICE



SWOOP 4

SWEDISH BLONDE

AVAILABLE COLORS :

- 1, 1B, 2,
- BURGUNDY FLAME,
- BUTTERSCOTCH BLONDE,
- GINGER SPICE,
- HAZELNUT HONEY,
- SWEDISH BLONDE,
- SWISS BROWN,
- DRFF AMBER SUNSET,
- DRFF CARAMEL MOCHA

