

Outre®

AUGUST 2023



STYLE & COLOR SHOWN:
LIL LOOKS DRAWSTRING PONYTAIL_DUO PUFFS | 1B (LEFT)
LIL LOOKS BRAID_3C WHIRLY 6" 2X | 2T1B/27 (RIGHT)

**BACK TO
SCHOOL**

SMART STYLES & LIL LOOKS:

BACK-TO-SCHOOL EDITION

IN THIS ISSUE

Lil Looks is available in kid-friendly, pre-customized pieces in plenty of style options. It's the beautiful time saving solution for the busy school season.

<p>BRAID 03</p> <p>Twisted Up</p> <p>BOHO BOX BRAID 12" 3X BOHO BOX BRAID 22" 3X</p> <p><small>NEW COLORS</small></p>	<p>BRAID 04</p> <p>Twisted Up</p> <p>DIY PRE-STRETCHED BRAID FRENCH CURL 52" 3X</p>	<p>BRAID 05</p> <p>Twisted Up</p> <p>BOX BRAID FRENCH CURL 22" 3X</p>	<p>BRAID 06</p> <p>Twisted Up</p> <p>CURL PATTERN COMPARISON SPRINGY AFRO TWIST SPRINGY BOHEMIAN TWIST WATERWAVE FRO TWIST</p>
<p>LACE WIG 08</p> <p>PERFECT HAIRLINE</p> <p>13X4 IMANI 13X5 ELANOR</p>	<p>LACE WIG 10</p> <p>melted HAIRLINE</p> <p>ELISSA LEXANNE JINEAN</p>	<p>LACE WIG 12</p> <p><i>Lace front</i></p> <p>MANDI YURI</p>	<p>LACE PART WIG 14</p> <p>THE DAILY WIG</p> <p>TESSINA HANNA KERRYANN</p>
<p>FULL WIG 16</p> <p>wigpop</p> <p>MADDOX CRUZ KORI</p>	<p>HALF WIG 18</p> <p>Quick WEAVE</p> <p>LYRICA ALEENA LUCETTE</p>	<p>PONYTAIL 20</p> <p>Outre Pretty Quick</p> <p>PREMIUM SYNTHETIC FIBER WRAP PONY</p> <p>NATURAL WAVE 28"</p>	<p>PONYTAIL 21</p> <p>Outre Pretty Quick</p> <p>PREMIUM SYNTHETIC FIBER PONY</p> <p>TESS</p>
<p>BRAID 22</p> <p>LIL LOOKS BRAIDS</p>	<p>DRAWSTRING PONY 26</p> <p>LIL LOOKS DRAWSTRING PONYTAIL</p>		

X-Pression
Twisted Up
100% PREMIUM SYNTHETIC FIBER

Get colorful, flawless Boho Box Braids the fool-proof way. Now in new colors!

- Premium Synthetic Fiber
- Quick, Long-Lasting Protective Style
- Soft Texture & Lightweight
- 100% Handcrafted
- Nonflammable
- Mix & Match with the Twisted Up Line

BOHO

STYLE & COLOR SHOWN :
BOHO BOX BRAID 12" 3X | CT/MACCHIATO

NEW COLORS

BOHO BOX BRAID 12" & 22" 3X



AVAILABLE COLORS : 1, 1B, 2, 4, 613, 950, CT/BLUE, CT/DARK PURPLE, CT/DAGON FRUIT, CT/HOTPINK, CT/MACCHIATO, CT/RED, CT/27, CT/30, CT/350, CT/425, CT/613



LIGHTWEIGHT

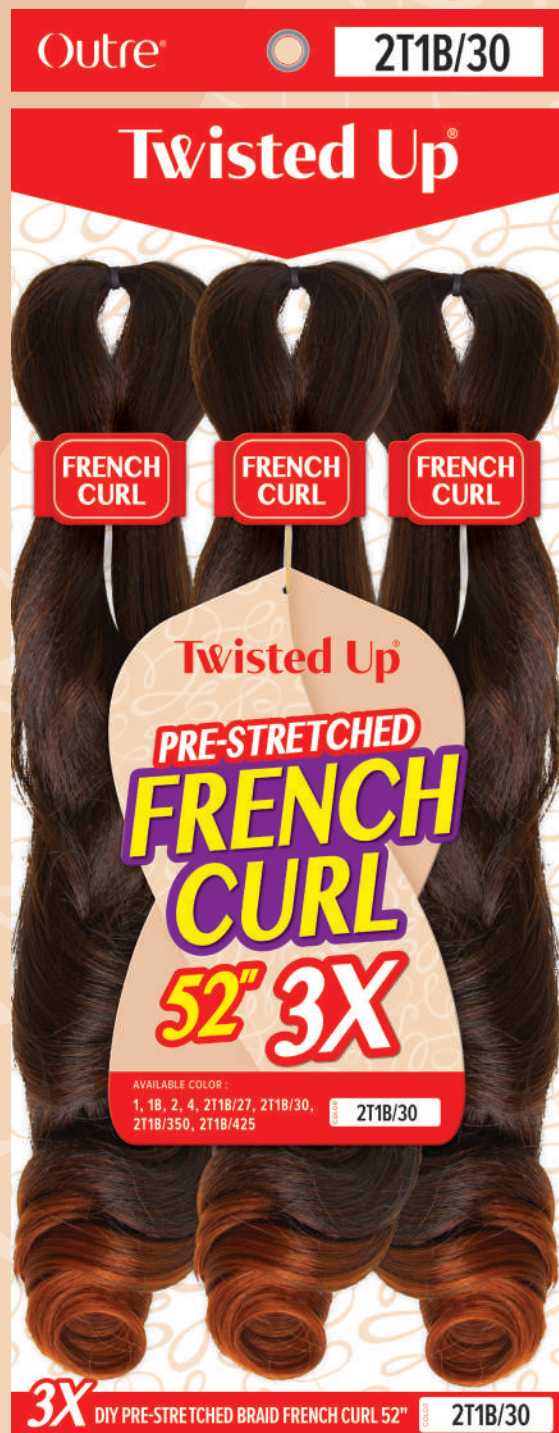
Twisted Up®

PRE-STRETCHED FRENCH CURL

52" 3X

The NEW Pre-Stretched French Curl 52" is the go-to pack for trendy braids with curly ends.

- Great for Knotless and Stitch Braids
- Fast Drying
- Itch-Free
- Ultra Soft
- Lightweight
- Pre-Stretched for Quick Braiding
- Pre-Layered for Easy, Natural Layers
- Bouncy French Curls
- Easy to Separate
- Unlimited Style Options



COLOR SHOWN : 2T1B/30

X-Pression® Twisted Up®

BOX BRAID FRENCH CURL

22" 3X

Get Box Braids with French Curl ends for a feminine finish that's on-trend.

- Made with 100% Premium Synthetic Fiber
- Quick, Long-Lasting Protective Style
- Easy to Maintain & Manage
- Soft Texture & Lightweight

LIGHTWEIGHT



AVAILABLE COLORS

1, 1B, 2, 4, 2T1B/27, 2T1B/30, 2T1B/350, 2T1B/425

SPECIAL COLORS



2T1B/27

2T1B/30

2T1B/350

2T1B/425

SPECIAL COLORS



2T1B/27

2T1B/30

2T1B/425

MACCHIATO

DRAGON FRUIT

AVAILABLE COLORS

1, 1B, 2, 4, 2T1B/27, 2T1B/30, 2T1B/425, MACCHIATO, DRAGON FRUIT



Never Pick the Wrong Hair Again



4C

SPRINGY AFRO TWIST



4A

SPRINGY BOHEMIAN TWIST



3C

WATERWAVE FRO TWIST



Made to mimic 4C tight curls. It has medium sheen, and lots of volume. Creates classic, spring twists; voluminous, kinky ponytails; highly-textured faux locs and more! 4c hair type.



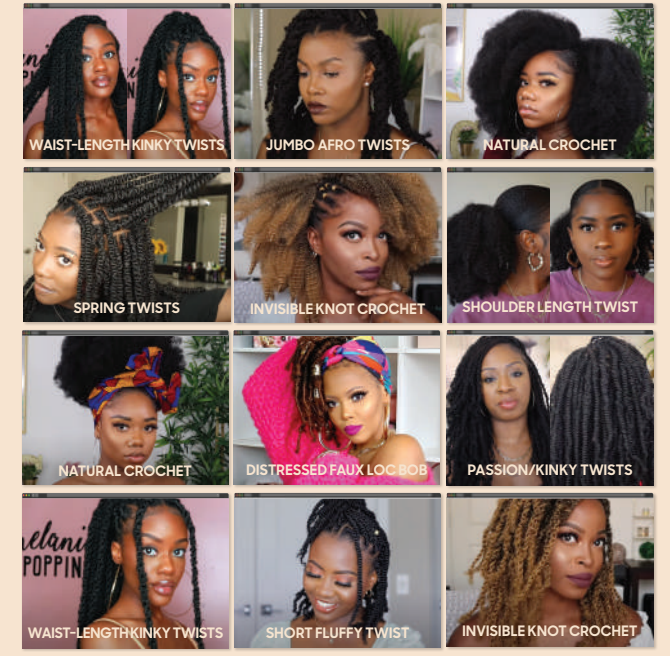
Springy Bohemian Twist has more texture than Waterwave Fro Twist, and looser curls than Springy Afro Twist. These 4A curls are voluminous and silky with a hint of texture. Creates slightly textured Passion Twist, locs with sheen and endless additional styles. 4A hair type.



For small, defined 3C waves with a natural sheen, select Waterwave Fro Twist. Like the classic waterwave style, but pre-fluffed, and with a touch of texture added. Creates passion locs with a bit more sheen, Passion Twists that features less springiness and less volume than Springy Afro Twist.

MIX & MATCH

THE HAIR THAT DOES IT ALL
Crochet, ponytails, twists and more. It's up to you how you twist it up.





COLOR SHOWN : DRFF4/HONEY BROWN (LEFT) DRFF2/VANILLA MOCHA (RIGHT)



COLOR SHOWN : 1B

SIDE

BACK

IMANI 13" X 4" 16"



COLOR SHOWN : DRFF LUMINOUS NIGHT



COLOR SHOWN : FF RUBY ESPRESSO

COLOR SHOWN : DRFF4/COPPER BALAYAGE

SIDE

BACK

ELANOR 13" X 5" 26"



PERFECT HAIRLINE™

FULLY HAND-TIED 13"X4" & 13" X 5" LACE WIG

Volume, curls, layers and colors! Get more than you could dream up with the new Imani style.

Elanor offers pretty waves, salon-quality shades, and a versatile 13"x5" lace frontal!

- Fully Hand-Tied 13" x 4" and 13" x 5" Frontal
- Ear-to-Ear Soft HD Transparent Lace
- Natural Baby Hairs
- Comes With Pre-Attached Elastic Band
- Fast, Easy & Effortless Glueless Installs
- Pre-Plucked Hairline
- Heat-Styling Friendly



AVAILABLE COLORS :

IMANI : 1, 1B, 2, GOLDEN HONEY BLONDE, DRFF GINGER BROWN, DRFF RED VELVET, DRFF2/VANILLA MOCHA, DRFF4/GOLDEN AMBER, DRFF4/HONEY BROWN

ELANOR : 1, 1B, 2, FF RUBY ESPRESSO, DR CHOCOLATE SWIRL, DR4/RICH AUBURN, DR4/VANILLA CREAM, DRFF LUMINOUS NIGHT, DRFF4/COPPER BALAYAGE, DRFF4/SUN GLOW BROWN

SPECIAL COLORS



melted HAIRLINE®

LACE FRONT WIG

Elissa's timeless style features soft, 22" length curls that's paired with the most natural hairline.

Lexanne is the go-anywhere bob with tousled waves for an easy, everyday look.

Jinean is a curly bob that is cut just right. These spirals are full and layered for a flattering look.

- Soft HD Transparent Lace
- 5" Deep Parting
- Completely Pre-Plucked Hairline & Sideburns
- Pre-Attached Wide Elastic Band for Secure Fit
- Fast, Easy & Effortless Glueless Installs
- Natural Baby Hairs
- Redesigned ComfortFit Ear Contour



COLOR SHOWN : DRFF2/CINNAMON MOCHA



COLOR SHOWN : DRFF2/HONEY GINGER BROWN



COLOR SHOWN : DRF ESPRESSO BROWN



COLOR SHOWN : DRFF4/HAZELNUT HONEY & DR MULLED WINE

SIDE

BACK



COLOR SHOWN : DR4/BLONDE LATTE MELT & 1B

SIDE

BACK



COLOR SHOWN : DR DRAGON FRUIT & DR2 VANILLA COCOA

SIDE

BACK



ELISSA 22"



LEXANNE 14"



JINEAN 12"



AVAILABLE COLORS

ELISSA : 1, 1B, 2, DR MULLED WINE, DR2/CHOCOLATE SWIRL, DR4/GOLDEN HONEY, DR4/PEARL BLONDE, DRFF CAJUN SPICE, DRFF2/CINNAMON MOCHA, DRFF4/HAZELNUT HONEY

LEXANNE : 1, 1B, 2, DR HONEY AUBURN, DR2/HAZELNUT BROWN, DR4/BLONDE LATTE MELT, DRFF GINGER BROWN, DRFF RED VELVET, DRFF2/HONEY GINGER BROWN

JINEAN : 1, 1B, 2, DR DRAGON FRUIT, DR GINGER TOFFEE, DR2/VANILLA COCOA, DR4/GOLDEN HONEY BLONDE, DRF ESPRESSO BROWN, DRF2/AUBURN SPICE

SPECIAL COLORS



Lace front[®]

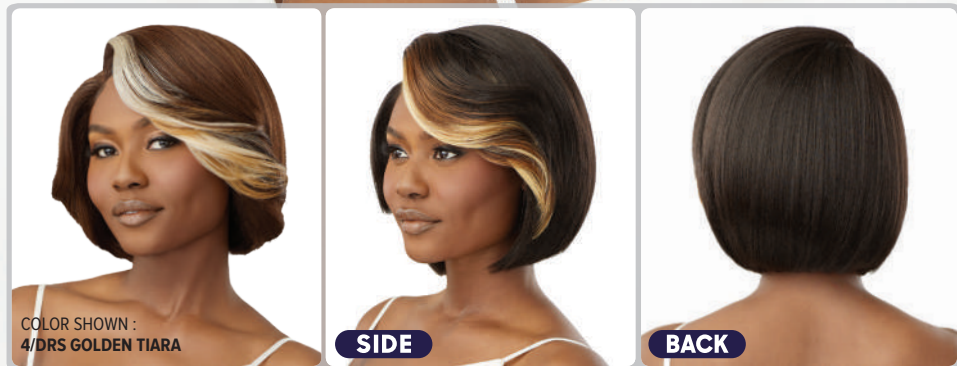
LACE FRONT WIG

Mandi and Yuri are our newest bobs with a natural and realistic fullness. These are the perfect additions for your summer collection!

- HD Transparent Lace
- Pre-Plucked Lace Parting
- Breathable, Comfortable Cap
- Natural Baby Hair
- Heat Resistant Fiber



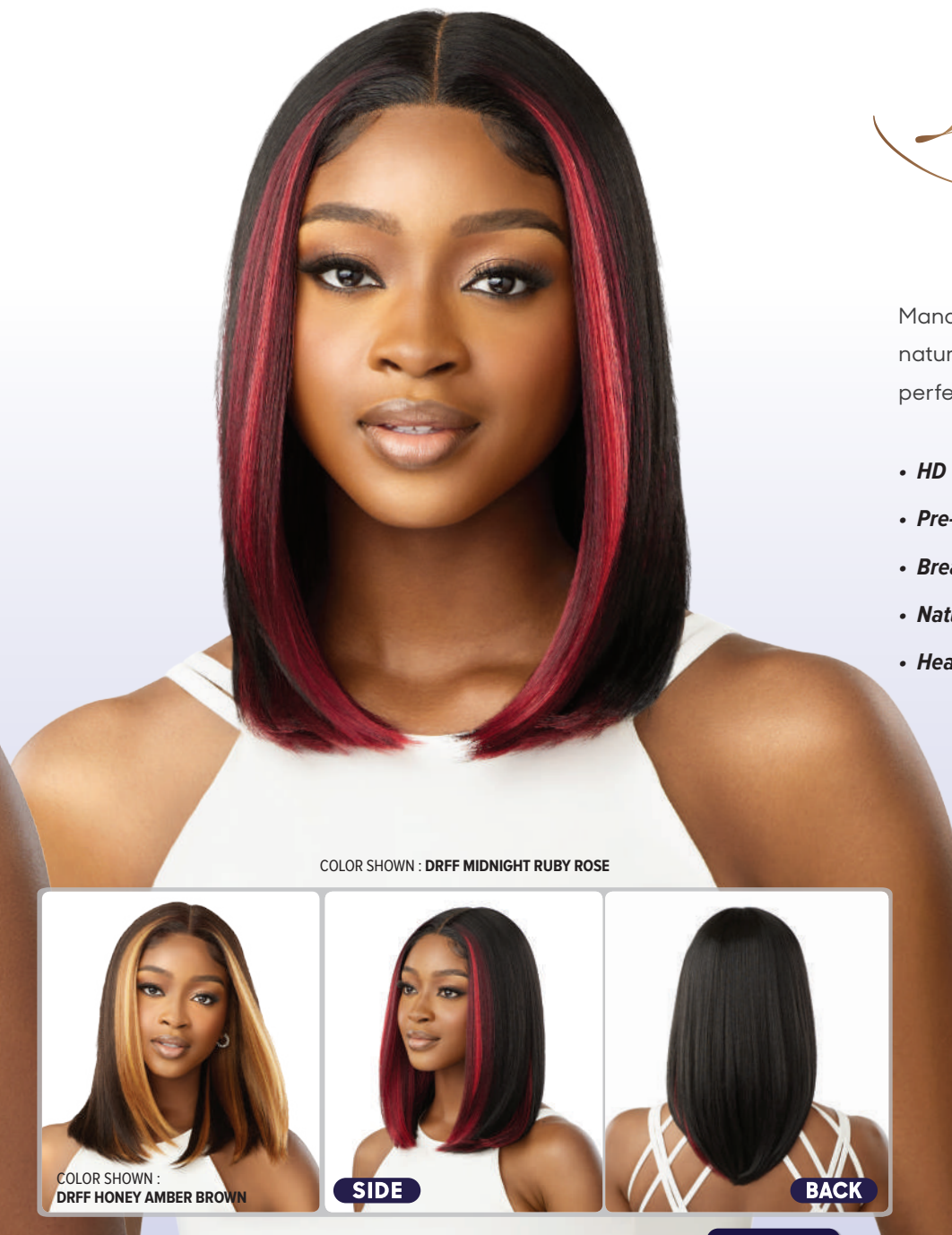
COLOR SHOWN : 1/DRS ORANGE SANGRIA (LEFT), 1B/DRS CARAMEL FUDGE (RIGHT)



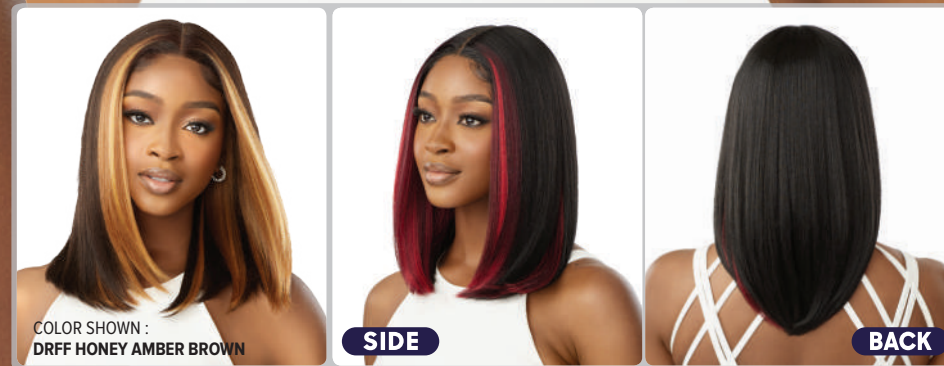
COLOR SHOWN : 4/DRS GOLDEN TIARA

SIDE

BACK



COLOR SHOWN : DRFF MIDNIGHT RUBY ROSE



COLOR SHOWN : DRFF HONEY AMBER BROWN

SIDE

BACK



MANDI

10"

5" DEEP PARTING



NATURAL BABY HAIRS



YURI

16"



NATURAL BABY HAIRS



AVAILABLE COLORS

MANDI : 1, 1B, DR RED VELVET, DR2/GINGER BROWN, DR4/SANDY BLONDE, 1/DRS ORANGE SANGRIA, 1B/DRS CARAMEL FUDGE, 2/DRS HONEY AMBER, 4/DRS GOLDEN TIARA

YURI : 1, 1B, 2, DR CHOCOLATE SWIRL, DR4/NATURAL HONEY, DR4/TIRAMISU, DRFF HONEY AMBER BROWN, DRFF MIDNIGHT RUBY ROSE, DRFF2/GINGER BROWN

SPECIAL COLORS





Tessina, Hanna, and Kerryann are easy-to-wear, wavy wigs in 3 lengths, special colors and an effortless lace part!

- Premium Synthetic Fibers
- Pre-Plucked & Hand-Tied Lace I-Part
- Breathable Mesh Cap
- Heat-Styling Friendly



COLOR SHOWN : DR4/PEARL BLONDE



COLOR SHOWN : DR BROWN SUGAR SWIRL



COLOR SHOWN : DR2/CHOCOLATE SWIRL



COLOR SHOWN : DRFF2/CINNAMON MOCHA

SIDE

BACK



COLOR SHOWN : DR2/GINGER BROWN

SIDE

BACK



COLOR SHOWN : DR4/PEARL BLONDE

SIDE

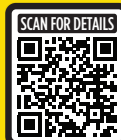
BACK



TESSINA 14"



HANNA 22"



KERRYANN 18"



AVAILABLE COLORS :

TESSINA : 1, 1B, 2,
DR2/CHOCOLATE SWIRL,
DR4/GOLDEN HONEY,
DR4/PEARL BLONDE, DRFF CAJUN SPICE,
DRFF2/CHERRY RED,
DRFF2/CINNAMON MOCHA,
DRFF4/HAZELNUT HONEY

HANNA : 1, 1B, 2,
DR BROWN SUGAR SWIRL,
DR MULLED WINE,
DR2/GINGER BROWN,
DR4/PEARL BLONDE,
DRFF4/GOLDEN HONEY,
DRFF4/HAZELNUT HONEY

KERRYANN : 1, 1B, 2,
DR2/CHOCOLATE SWIRL,
DR2/GINGER BROWN,
DR4/GOLDEN HONEY,
DR4/PEARL BLONDE,
DRFF2/CHERRY RED,
DRFF4/HAZELNUT HONEY

SPECIAL COLORS



wigpop®

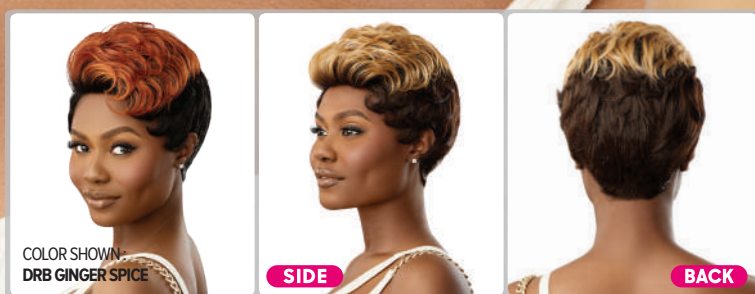
SYNTHETIC FULL WIG

Pop on a short and chic wig! Maddox, Cruz and Kori are new cuts in show-stopping shades.

- Range of Trendy Colors & Styles
- Great Value
- Ready to Wear & Go
- Heat-Styling Friendly



COLOR SHOWN : DRB4/HONEY AMBER



COLOR SHOWN : DRB GINGER SPICE

SIDE

BACK



COLOR SHOWN : DR ROYAL BLUE



SIDE

BACK



COLOR SHOWN : DRF2/WILD RED



SIDE

BACK



MADDOX



CRUZ



KORI



AVAILABLE COLORS :

MADDOX : 1, 1B, 2, CHOCOLATE SWIRL, CREAM SODA, DRB GINGER SPICE, DRB4/HONEY AMBER, DRB4/TIRAMISU, DRB99J/CHERRY RED, DX MISTY GRAY

CRUZ : 1, 1B, 2, 34, 44, 280, GOLDEN HONEY BLONDE, DR GINGER BROWN, DR HONEY AUBURN, DR RED VELVET, DR ROYAL BLUE, DR ROYAL PURPLE, DR2/CHOCOLATE SWIRL

KORI : 1, 1B, 2, 34, 44, 280, GOLDEN HONEY BLONDE, DR GINGER BROWN, DR ROYAL BLUE, DR ROYAL PURPLE, DR2/CHOCOLATE SWIRL, DR2/GOLDEN AMBER, DRF2/WILD RED

SPECIAL COLORS



Quick WEAVE®



COLOR SHOWN : DR GINGER TOFFEE



COLOR SHOWN : DR HONEY AUBURN



COLOR SHOWN : 1B

The Lucette bob has bounce, body, flattering layers and the most natural texture!

Install this summery look in a flash! With the Lyrica half wig, you can skip lace tinting, cutting and gluing completely!

Get the realest hairline with Aleena. Blend this half wig's curls with your leave out and go!

- Natural Texture & Volume
- New Cap Lays Flatter
- High Heat Resistant Fiber
- Easy to Wear Styles
- Less Leave Out Required



COLOR SHOWN : DX MISTY SMOKE GRAY

SIDE

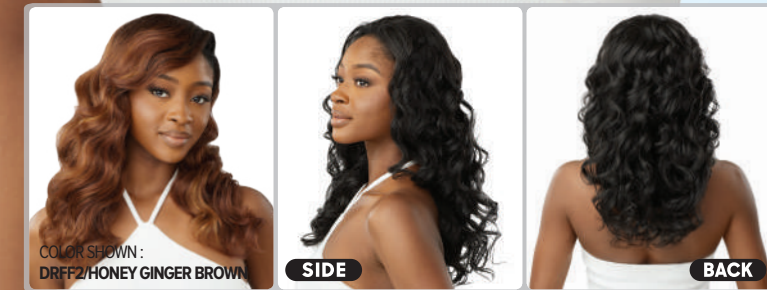
BACK



COLOR SHOWN : 1B

SIDE

BACK



COLOR SHOWN : DRFF2/HONEY GINGER BROWN

SIDE

BACK



LUCETTE 14"



LYRICA 12"



ALEENA 20"



AVAILABLE COLORS :

LUCETTE : 1, 1B, 2, S1B/30, DR GINGER TOFFEE, DR RED VELVET, DR2/CHOCOLATE SWIRL, DR2/GOLDEN AMBER, DR4/GOLDEN HONEY BLONDE, FF MIDNIGHT GRAY, HT TWILIGHT GRAY,DX MISTY SMOKE GRAY

LYRICA : 1, 1B, 2, S1B/30, DR GINGER TOFFEE, DR HONEY AUBURN, DR RED VELVET, DR2/CHOCOLATE SWIRL, DXH SILVER BROWN, FF MIDNIGHT GRAY, HT TWILIGHT GRAY

ALEENA : 1, 1B, 2, 4, DR CHAI LATTE, DR RED VELVET, DR2/GOLDEN AMBER, DR4/GOLDEN HONEY BLONDE, DRFF2/HONEY GINGER BROWN, DRFF2/VANILLA MOCHA

SPECIAL COLORS



Pretty Quick™

PREMIUM SYNTHETIC FIBER

WRAP PONY

DIY a wavy ponytail anytime with our Natural Wave 28" wrap-around pony.

- Made with Premium Synthetic Fiber
- Great for High & Low Ponytails
- Salon Style Wrap Ponytail
- Bulk-Free Ponytail Base
- Quick and Easy Styling
- Lightweight
- Soft Feel & Natural Luster



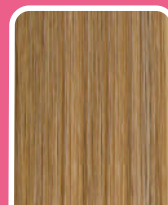
COLOR SHOWN : 1B (LEFT & RIGHT)



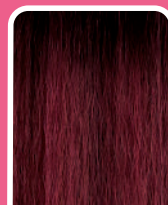
NATURAL WAVE 28"



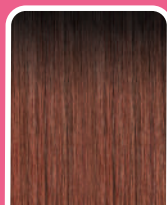
SPECIAL COLORS



TIRAMISU



DR RED VELVET



DR GINGER BROWN



DRST HONEY BROWN

AVAILABLE COLORS

1, 1B, 2,
TIRAMISU,
DR RED VELVET,
DR GINGER BROWN,
DRST HONEY BROWN

Pretty Quick™

PREMIUM SYNTHETIC FIBER

PONY

Re-introducing our popular ponytail - Tess! This Timeless, textured pony is a now a Pretty Quick option.

- Natural Look & Soft Texture
- Quick & Easy Styling
- Lightweight Drawstring Construction
- Premium Synthetic Fiber



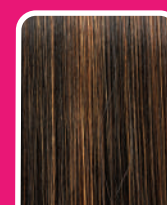
COLOR SHOWN : 1B (LEFT & RIGHT)



TESS 22"



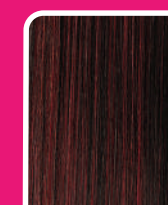
SPECIAL COLORS



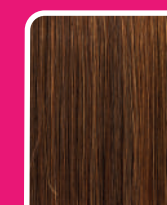
S1B/30



S1B/33



S1B/BURGUNDY



S4/30

AVAILABLE COLORS

1, 1B, 2, 4,
S1B/30,
S1B/33,
S1B/BURGUNDY,
S4/30



COLOR SHOWN : 1B



BOX BRAID 10"

AVAILABLE COLORS : 1, 1B, 2, 4, 27, 30, 99J, BURGUNDY



COLOR SHOWN : 1B + BU



SENEGAL TWIST 10"

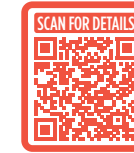
AVAILABLE COLORS : 1, 1B, 2, 4, 27, 30, 99J, BURGUNDY

X-Pression LIL LOOKS®

100% PREMIUM SYNTHETIC FIBER

BRAIDS

SMART STYLES FOR BACK TO SCHOOL



- Made with 100% Premium Synthetic Fiber
- Quick, Long-Lasting Protective Style
- Easy to Maintain & Manage
- Soft Texture & Lightweight

18 STRANDS



COLOR SHOWN : MACCHIATO



BUTTERFLY LOCS SWEETY 8" 2X

AVAILABLE COLORS : 1, 1B, 2, 4, DRAGON FRUIT, MACCHIATO

20 STRANDS



COLOR SHOWN : 1B



WAVY BOMB TWIST 8"

AVAILABLE COLORS : 1, 1B, 2, 4, 27, 30, 99J, BURGUNDY, 2T1B/27, 2T1B/30, DRAGON FRUIT, MACCHIATO



COLOR SHOWN : 2T1B/350



COCO FRO 5"

AVAILABLE COLORS : 1, 1B, 2, 4, 2T1B/27, 2T1B/30, 2T1B/350, 2T1B/425

12 STRANDS



BONITA BUTTERFLY LOCS COILY TIP 8"

AVAILABLE COLORS : 1, 1B, 2, 4, 2T1B/30, 2T4/27

BOUNCE ROD 6"

COLOR SHOWN: 1B

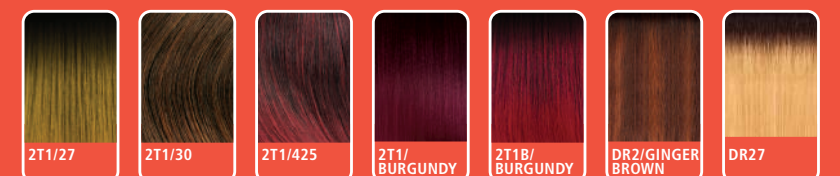
AVAILABLE COLORS : 1, 1B, 2, 4, 27, 30, 99J, BURGUNDY

TWIST ROD 6"

COLOR SHOWN: 99J



SPECIAL COLORS





COLOR SHOWN : 2T1B/30

BOUNCY WAND 5"

AVAILABLE COLORS : 1, 1B, 99J, BURGUNDY



12 STRANDS
CROCHET LOOP
EASY FAST STYLING

BUTTERFLY & DISTRESSED STYLES

BUTTERFLY PASSION TWIST 8"

AVAILABLE COLORS : 1, 1B, 2, 4, 2T1B/27, 2T1B/30, DRAGON FRUIT, MACCHIATO



20 STRANDS
CROCHET LOOP
EASY FAST STYLING

COLOR SHOWN : DRAGON FRUIT

4A KINKY 6" 2X

AVAILABLE COLORS : 1, 1B, 2, 4, 2T1B/27, 2T1B/30, DRAGON FRUIT, MACCHIATO



20 STRANDS
CROCHET LOOP
EASY FAST STYLING

COLOR SHOWN : 2T1B/27

WATER CURL 6" 2X

AVAILABLE COLORS : 1, 1B, 2, 4, 2T1B/27, 2T1B/30, DRAGON FRUIT, MACCHIATO



30 STRANDS
CROCHET LOOP
EASY FAST STYLING

COLOR SHOWN : 2T1B/350

PASSION WATERWAVE FEED TWIST 10" 3X

AVAILABLE COLORS : 1, 1B, 2, 4, 2T1B/27, 2T1B/30, 2T1B/350, 2T1B/425



30 STRANDS
CROCHET LOOP
EASY FAST STYLING

COLOR SHOWN : 2T1B/30

PASSION BOHEMIAN FEED TWIST 10" 3X

AVAILABLE COLORS : 1, 1B, 2, 4, 2T1B/27, 2T1B/30, 2T1B/350, 2T1B/425



20 STRANDS
CROCHET LOOP
EASY FAST STYLING

COLOR SHOWN : DRAGON FRUIT

DEEP CURL 6" 2X

AVAILABLE COLORS : 1, 1B, 2, 4, 2T1B/27, 2T1B/30, DRAGON FRUIT, MACCHIATO



18 STRANDS
CROCHET LOOP
EASY FAST STYLING

COLOR SHOWN : MACCHIATO

BOX BRAID SWEETIE 8" 2X

AVAILABLE COLORS : 1, 1B, 2, 4, DRAGON FRUIT, MACCHIATO



100% Kanekalon
Flame Retardant Fiber

30 STRANDS
CROCHET LOOP
EASY FAST STYLING

COLOR SHOWN : 2T1B/30

SPRINGY AFRO TWIST 10" 3X

AVAILABLE COLORS : 1, 1B, 2, 4, 2T1B/27, 2T1B/30, DRAGON FRUIT, MACCHIATO



100% Kanekalon
Flame Retardant Fiber

PRE-STRETCHED
PRE-LAYERED

COLOR SHOWN : 1B

PRE-STRETCHED BRAID 32" 3X

AVAILABLE COLORS : 1, 1B, 2, 4, 2T1B/27, 2T1B/30, 2T1B/350, 2T1B/425



24 STRANDS
CROCHET LOOP
EASY FAST STYLING

BUTTERFLY & DISTRESSED STYLES

BORABORA LOCS 8" 3X

AVAILABLE COLORS : 1, 1B, 2, 4, 2T1B/27, 2T1B/30, DRAGON FRUIT, MACCHIATO



20 STRANDS
CROCHET LOOP
EASY FAST STYLING

COLOR SHOWN : 2T1B/27

3C WHIRLY 6" 2X

AVAILABLE COLORS : 1, 1B, 2, 4, 2T1B/27, 2T1B/30, DRAGON FRUIT, MACCHIATO



20 STRANDS
CROCHET LOOP
EASY FAST STYLING

COLOR SHOWN : MACCHIATO

4C COILY 6" 2X

AVAILABLE COLORS : 1, 1B, 2, 4, 2T1B/27, 2T1B/30, DRAGON FRUIT, MACCHIATO

Lil LOOKS®

100% PREMIUM SYNTHETIC FIBER

DRAWSTRING PONYTAIL



- Kid-Friendly Styles, Lengths and Sizes
- Easy to Blend, Wear and Style
- Soft, Natural Textures & Lightweight
- Adjustable Drawstring
- Made with 100% Premium Synthetic Fiber



COLOR SHOWN : 1B



BEADED BOX BRAIDS 12"

AVAILABLE COLORS : 1, 1B, 2, 4, 2T1/27, 2T1/30, 2T1/BURGUNDY



COLOR SHOWN : 1B



BRIA

AVAILABLE COLORS : 1, 1B, 2, 4, 2T1/425, DR27, DR2/GINGER BROWN



COLOR SHOWN : 1B



BEADED TWISTS 12"

AVAILABLE COLORS : 1, 1B, 2, 4, 2T1/27, 2T1/30, 2T1/BURGUNDY



COLOR SHOWN : 1B



COILY PUFF

AVAILABLE COLORS : 1, 1B, 2, 4, 2T1/27, 2T1/30, 2T1B/BURGUNDY



COLOR SHOWN : 2T1B/30



DUO PUFFS

AVAILABLE COLORS : 1, 1B, 2, 4, 2T1/27, 2T1/30, 2T1B/BURGUNDY



COLOR SHOWN : 1B



GOLD ACCENTED NATURAL WAVE 12"

AVAILABLE COLORS : 1, 1B, 2, 4, 2T1/27, 2T1/30, 2T1/BURGUNDY



COLOR SHOWN : 1B



GOLD CUFFED BOMB TWISTS 12"

AVAILABLE COLORS : 1, 1B, 2, 4, 2T1/27, 2T1/30, 2T1/BURGUNDY



COLOR SHOWN : 1B



MINI COILY PUFF

AVAILABLE COLORS : 1, 1B, 2, 4, 2T1/27, 2T1/30, 2T1B/BURGUNDY



COLOR SHOWN : 1B



MINI DUO PUFFS

AVAILABLE COLORS : 1, 1B, 2, 4, 2T1/27, 2T1/30, 2T1B/BURGUNDY



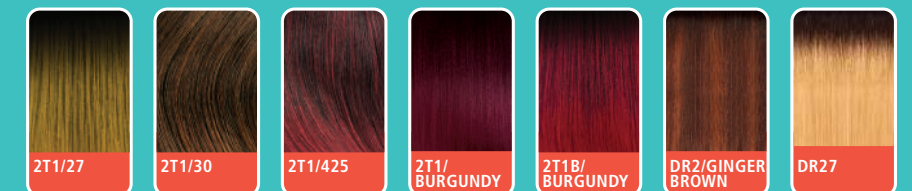
SPRINGY COILS 8"

AVAILABLE COLORS : 1, 1B, 2, 4, 2T1/27, 2T1/30, 2T1/BURGUNDY

COLOR SHOWN : 1B (LEFT), 2T1/30 (RIGHT)



SPECIAL COLORS





X-Pression®

Twisted Up®

100% KANEKALON FIBER

SPRINGY BOHEMIAN TWIST

A NEW TWIST FOR NEW STYLES

Springy Bohemian Twist has everything braiders love about Springy Afro Twist but with looser curls and a little less texture to unlock even more style options!



100% Kanekalon®

Flame Retardant Fiber

PRE-SEPARATED & PRE-FLUFFED

STYLE & COLOR SHOWN :
SPRINGY BOHEMIAN TWIST 30" | DRAGON FRUIT

Outre® BEAUTIFUL HAIR FOR ALL

800.874.8804 OUTRE.COM
Copyright © 2022 Sun Taiyang Co., Ltd. All rights reserved.

