

AUGUST 2024

Outre®



STYLE & COLOR SHOWN:

PERFECT HAIRLINE 13X4_MILANI | DR99J/ROSY SPICE (LEFT)
PERFECT HAIRLINE 13X4_MALIBU | 3DR4/CREAM OMBRE (RIGHT)

PERFECT HAIRLINE:

Heat up your hair game

Outre®
85 Oxford Drive,
Moonachie, NJ 07074
USA

IN THIS ISSUE

Embrace effortless summer hair with Perfect Hairline.

Summer is here—with sun, sand, and endless fun—but the heat and humidity can ruin a style. Perfect Hairline's new wigs offer an impeccable hairline and the perfect solution for summer-ready styles that keep you looking good, no matter your plans or the temperature.

BRAID 03 PRE-STRETCHED BRAID 52" 3X <i>X-Pression</i> NEW COLORS	HH-WEAVE 04 <i>Sugar Punch</i> 4" X 4" LACE CLOSURE 10", 12", 14" 13" X 4" LACE CLOSURE 10", 12", 14" MULTI BUNDLE, STRAIGHT, BODY 22" 24" 26" / 24" 26" 28" / 26" 28" 30"	HH-LACE WIG 06 <i>My TRESSES</i> 13" X 4" LACE FRONTAL WIG HH-VIRGIN STRAIGHT BOB 10" HH-VIRGIN WAVY BOB 10"	LACE WIG 08 PERFECT HAIRLINE MILANI MALIBU LORENA IRINA
LACE WIG 10 PERFECT HAIRLINE JAINA FIORINA KIHARA	LACE WIG 12 melted HAIRLINE LACE FRONT WIG JUDI DILARA SHELBY	LACE WIG 14 melted HAIRLINE LACE FRONT WIG ELIANNE MATILDA PRIMROSE	LACE WIG 16 <i>Lace front</i> ELLIS GIO VIETTA
LACE WIG 18 <i>Lace front</i> ALEIDA MELANIE MORIAH	LACE PART WIG 20 THE DAILY WIG LACE PART WIG PRIANNA	HH-LACE PART WIG 21 PREMIUM DUBY DIAMOND 100% HUMAN HAIR HH - DOTTIE	HH-FULL WIG 22 <i>Fab & Fly</i> HH - LAVINA
HH-FULL WIG 23 <i>Fab & Fly</i> GRAY GLAMOUR HH - CARLIE	FULL WIG 24 wigpop SYNTHETIC FULL WIG colorplay JORDAN	PONYTAIL 25 <i>Outre</i> Pretty Quick PREMIUM SYNTHETIC FIBER PONY KATE VV	CATALOG 26 PONYTAIL COLLECTION

NEW COLOR 52"



X-Pression®

PRE-STRETCHED



Crank up the heat with 3 fiery colors in a vibrant, new multi-pack that creates red-hot styles.

- Pre-Stretched & Pre-Layered
- Quickest Install
- Easy to Braid
- Easy to Manage
- Ultra Lightweight
- Hot Water Set Friendly
- Tangle-Free

RED ROSE & AMBER & CAJUN SPICE

PRE-STRETCHED BRAID 52" 3X

PRE-STRETCHED BRAID 52" 3X:

1, 1B, 2, 4, 27, 27+30+613, 30, 33, 34, 44, 51, 60, 99J, 130S, 280, 350, 425, 613, 613A, AMBER, APPLE RED, APRICOT, AQUA MARINE, BABY PINK, BLUE, BLUE RASPBERRY, BRIGHT RED, BURGUNDY, DRAGON FRUIT, FORSYTHIA, GLOW NEON HOTPINK, GLOW NEON LEMON YELLOW, GLOW NEON ORANGE, GLOW NEON PUMPKIN, GREEN SHAKE, HOT PINK, INDIGO, LUXE BLUE, MINT, MINT VIBES, MOODY SKY BLUE, OLIVE, PARTY PUNCH, PUMPKIN SPICE, PURPLE, PURPLE RAIN, RASTA, ROSE GOLD, RED ROSE & AMBER & CAJUN SPICE, SHOCKING PINK, SKY BREEZY, SILVER GRAY, SMOKEY LILAC, SUN FLOWER, SWEDISH BLONDE, UNICORN, VIOLET, WARM VIOLET, WILD CHERRY, 2T1B/130S, 2T1B/27, 2T1B/2730, 2T1B/27613, 2T1B/30, 2T1B/33, 2T1B/350, 2T1B/60, 2T1B/BLUE, 2T1B/BURGUNDY, 2T1B/FORSYTHIA, 2T1B/INDIGO, 2T1B/LUXE BLUE, 2T1B/MINT VIBES, 2T1B/OLIVE, 2T1B/PURPLE, 2T1B/ROSE GOLD, 2T1B/SHOCKING PINK, 2T1B/SILVER GRAY, M1B/27, M1B/30, M1B/350, M1B/425, M4/30, M4/27/30, M4/27/613, M4/27/30/613, M27/613, M27/30/613, M27/30, M950/425/350/130S

Remy
Sugar Punch™
100% UNPROCESSED REMY HUMAN HAIR

4"x4" 13"x4"
LACE CLOSURE

These SUGARPUNCH 4"x4" / 13"x4" HD closures have the look of a frontal, the ease of a ponytail, and all the styles of your dreams.

- 100% Unprocessed Remy Human Hair
- 4"x4" HD Transparent Lace Closure / 13"x4" HD Transparent Lace Frontal
- Double Drawn Process with Cuticle Retained Strands
- Thick, Lush, Tangle-Free Ends
- Smooth, Resilient Hair & Long-Lasting Bundles
- One Directional Strands for More Tangle Resistance
- Pre-Plucked Hairline & Natural-Looking Baby Hair
- Bleach / Dye / Customize • No Shedding



STYLE & COLOR SHOWN: BODY / NATURAL BLACK

MULTI PACK 3PCS
NEW LENGTHS

22" 24" 26" 24" 26" 28" 26" 28" 30"



STRAIGHT **BODY**

AVAILABLE STYLES: BODY, STRAIGHT
AVAILABLE COLORS: NATURAL BLACK, NATURAL
AVAILABLE LENGTHS: 10", 12", 14" / 12", 14", 16" / 14", 16", 18" / 16", 18", 20" / 18", 20", 22" / 20", 22", 24" / 22", 24", 26" / 24", 26", 28" /

Sugar Punch™

100% UNPROCESSED REMY HUMAN HAIR

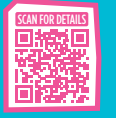
Remy

Strong, smooth, resilient strands that are lush & full with new length options.

Wear it, wash it, and repeat with SugarPunch's long-lasting hair.

DOUBLE DRAWN
FOR FULL, THICK ENDS
Smooth, Resilient STRANDS

- 100% Unprocessed Remy Human Hair
- Double Drawn for Thick, Lush Ends
- One Directional Cuticles for Tangle Resistance
- Smooth, Resilient Hair & Long-Lasting Bundles
- Bleach & Dye, Wash & Reuse
- No Shedding



4"x4" LACE CLOSURE



STRAIGHT **BODY** **DEEP** **OCEAN** **BOHEMIAN**

AVAILABLE LENGTHS: 10", 12", 14" | AVAILABLE COLORS: NATURAL BLACK, NATURAL

13"x4" LACE FRONTAL



STRAIGHT **BODY**

My[®] TRESSES

PREMIUM 100% UNPROCESSED HUMAN HAIR

BLACK LABEL

13" X 4"

LACE FRONTAL WIG

Your go-to Straight Bob just got upgraded with 10+ grade hair and a first-class, 13"x4" lace frontal.

- 100% Unprocessed Human Hair
- Hand-Tied 13" X 4" Lace Frontal
- HD+ Transparent Lace
- Bleach / Dye / Customize
- 3 Pre-Attached Combs for a Secure Fit
- Pre-attached Elastic Band for a Glueless Fit



My[®] TRESSES

PREMIUM 100% UNPROCESSED HUMAN HAIR

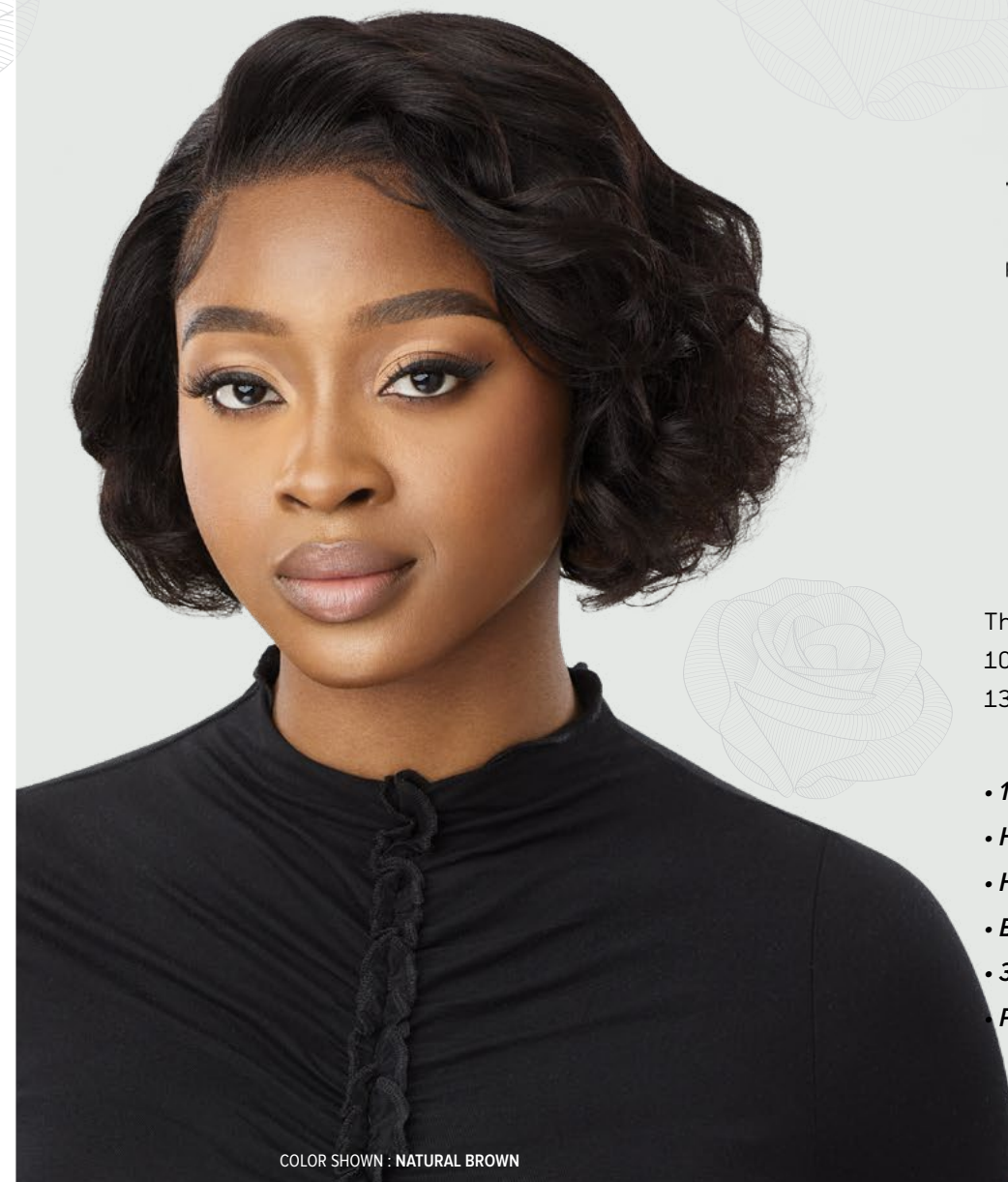
BLACK LABEL

13" X 4"

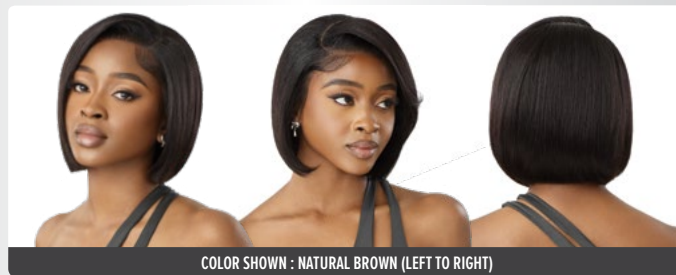
LACE FRONTAL WIG

The Virgin Wavy Bob boasts unmatched 100% human hair quality and a luxurious 13"x4" lace frontal.

- 100% Unprocessed Human Hair
- Hand-Tied 13" X 4" Lace Frontal
- HD+ Transparent Lace
- Bleach / Dye / Customize
- 3 Pre-Attached Combs for a Secure Fit
- Pre-attached Elastic Band for a Glueless Fit



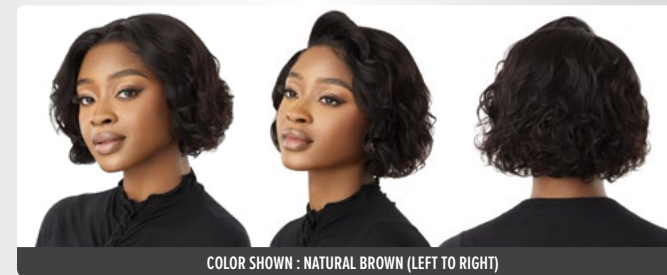
HH-VIRGIN STRAIGHT BOB 10"



AVAILABLE COLORS : NATURAL BLACK, NATURAL BROWN



HH-VIRGIN WAVY BOB 10"



AVAILABLE COLORS : NATURAL BLACK, NATURAL BROWN





COLOR SHOWN : DR99J/ROSY SPICE

MILANI 14"



COLOR SHOWN : DR4/CHOCOLATE GOLD, 3DRFF/BUTTERY BLONDE, DR99J/ROSY SPICE (LEFT TO RIGHT)

AVAILABLE COLORS
1, 1B, 2, HAVANA BROWN, RICH RED, SOFT GINGER, DR CHOCOLATE SWIRL, DR4/CHOCOLATE GOLD, DR4/MUSHROOM BLONDE, DR99J/ROSY SPICE, 3DRFF BUTTERY BLONDE

13" X 4"



COLOR SHOWN : 3DR4/CREAM OMBRE

MALIBU 16"



COLOR SHOWN : WARM APRICOT, DR JADE BLUE, 3DR4/CREAM OMBRE (LEFT TO RIGHT)

AVAILABLE COLORS
1, 1B, 2, CHOCOLATE SWIRL, RED VELVET, TIRAMISU, WARM APRICOT, DR COPPER BROWN, DR JADE BLUE, DR SOFT PINK, DR4/ASH BROWN, 3DR4/CREAM OMBRE

13" X 4"



COLOR SHOWN : DRFF4/HONEY GLAZE BROWN

LORENA 26"



COLOR SHOWN : DR/OL MOONLIT NIGHT, ROUGE PINK, DRFF4/HONEY GLAZE BROWN (LEFT TO RIGHT)

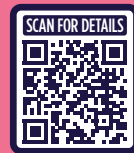
AVAILABLE COLORS
1, 1B, 2, ROUGE PINK, SOFT BLONDE, DR DEEP BURGUNDY, DR/OL MOONLIT NIGHT, DRFF BLACK JADE, DRFF4/COPPER BALAYAGE, DRFF4/HONEY GLAZE BROWN

13" X 6"



COLOR SHOWN : DRST4/GINGER SPICE

IRINA 24"



COLOR SHOWN : DRFF2/BRONDE BALAYAGE, DR2/CHOCOLATE SWIRL, DRST4/GINGER SPICE (LEFT TO RIGHT)

AVAILABLE COLORS
1, 1B, 2, STRAWBERRY GOLD, TIRAMISU, DR RAGING RED, DR2/CHOCOLATE SWIRL, DRFF2/BRONDE BALAYAGE, DRFF2/CINNAMON MOCHA, DRST4/GINGER SPICE



PERFECT HAIRLINE™

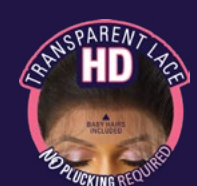
FULLY HAND-TIED 13"X6" & 13"X4" LACE WIG

Milani and Malibu are more than basic bobs. Get layers, 13x4 lace, and a blast of color with this pair.

It's all about those waves and curls! Pick Lorena's long, wand curls or Irina's wet & wavy-inspired style to add spark to your look.

- Fully Hand-Tied 13" x 6" and 13" x 4" Frontals
- Ear-to-Ear Soft HD Transparent Lace
- Natural Baby Hairs
- Comes With a Pre-Attached Elastic Band
- Fast, Easy & Effortless Glueless Installs
- Pre-Plucked Hairline
- Heat-Styling Friendly

13" X 6"





COLOR SHOWN : DRST BLACK PINK



COLOR SHOWN : DR4/FROSTED ASH BROWN



COLOR SHOWN : DRFF4/ROSE BROWN



PERFECT HAIRLINE™

FULLY HAND-TIED 13"X6" LACE WIG

Choose your 22" style: Jaina's soft and sultry waves or Fiorina's curls with body and bounce.

Kihara's mid-length layers and special colors will have you collecting compliments all summer long.

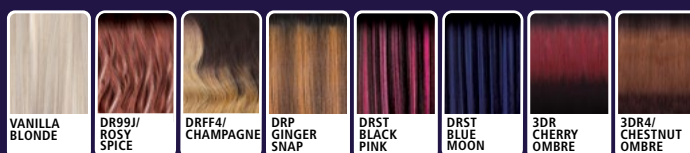
- Fully Hand-Tied 13" x 6" Frontals
- Ear-to-Ear Soft HD Transparent Lace
- Natural Baby Hairs
- Comes With a Pre-Attached Elastic Band
- Fast, Easy & Effortless Glueless Installs
- Pre-Plucked Hairline
- Heat-Styling Friendly

JAINA 22"

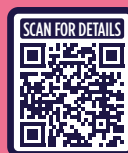


COLOR SHOWN : DRFF4/CHAMPAGNE, 3DR4/CHESTNUT OMBRE, DRST BLACK PINK, DRST BLACK PINK (LEFT TO RIGHT)

AVAILABLE COLORS
1, 1B, 2, VANILLA BLONDE, DR99J/ROSY SPICE, DRFF4/CHAMPAGNE, DRP GINGER SNAP, DRST BLACK PINK, DRST BLUE MOON, 3DR CHERRY OMBRE, 3DR4/CHESTNUT OMBRE



FIORINA 22"



COLOR SHOWN : OCEAN BLUE, DR DEEP BURGUNDY, DR4/FROSTED ASH BROWN, DR4/FROSTED ASH BROWN (LEFT TO RIGHT)

AVAILABLE COLORS
1, 1B, 2, HONEY BUTTER, OCEAN BLUE, DR DEEP BURGUNDY, DR4/FROSTED ASH BROWN, DR4/VANILLA CREAM, DRFF BLACK JADE, DRFF GINGER COPPER, DRST CHOCOLATE SWIRL



KIHARA 22"



COLOR SHOWN : LR613/HEAVENLY PINK, DRFF4/HONEY AUBURN, DRFF4/ROSE BROWN, DRFF4/ROSE BROWN (LEFT TO RIGHT)

AVAILABLE COLORS
1, 1B, 2, BLUE ANGEL, DR CHESTNUT DIP, DR DEEP BURGUNDY, DRFF4/COPPER BALAYAGE, DRFF4/HONEY AUBURN, DRFF4/ROSE BROWN, LR8/HONEY ASH BLONDE, LR613/HEAVENLY PINK



13 X 6





COLOR SHOWN : 2T/SANGRIA



COLOR SHOWN : DR COPPER BROWN



COLOR SHOWN : DEEP BURGUNDY



melted HAIRLINE®

LACE FRONT WIG

Judi is a low-maintenance style that hits right at the shoulder for a classy, office-ready look.

Vacation mode starts now! Dilara's wet & wavy-inspired style is the certified beach babe look.

Shelby's show-stopping cascading curls, and deep side part comes in pretty colors like Soft Pink and Warm Apricot.

- Soft HD Transparent Lace
- 5" Deep Parting
- Completely Pre-Plucked Hairline & Sideburns
- Pre-Attached Wide Elastic Band for Secure Fit
- Fast, Easy & Effortless Glueless Installs
- Natural Baby Hairs
- Redesigned ComfortFit Ear Contour
- Heat Resistant Fiber

JUDI 14"



COLOR SHOWN : ASH BROWN, TIRAMISU, 2T/SANGRIA, 2T/SANGRIA (LEFT TO RIGHT)

AVAILABLE COLORS
1, 1B, 2, 2T/SANGRIA, ASH BROWN, TIRAMISU, DR PINK BLUSH, DR2/CHOCOLATE SWIRL, DRFF2/DARK HONEY MELT, DRFF2/HONEY AMBER BROWN, DRST4/GINGER SPICE



DILARA 28"



COLOR SHOWN : 1B, DR2/CREAMY TOFFEE, DR COPPER BROWN, DR COPPER BROWN (LEFT TO RIGHT)

AVAILABLE COLORS
1, 1B, 2, 99J, S1B/30, CHOCOLATE SWIRL, TIRAMISU, WARM APRICOT, DR COPPER BROWN, DR JADE BLUE, DR2/CREAMY TOFFEE

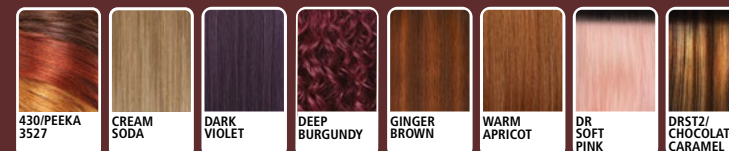


SHELBY 18"



COLOR SHOWN : CREAM SODA, DRST2/CHOCOLATE CARAMEL, DEEP BURGUNDY, DEEP BURGUNDY (LEFT TO RIGHT)

AVAILABLE COLORS
1, 1B, 2, 430/PEEKA 3527, CREAM SODA, DARK VIOLET, DEEP BURGUNDY, GINGER BROWN, WARM APRICOT, DR SOFT PINK, DRST2/CHOCOLATE CARAMEL





COLOR SHOWN : DRST4/GINGER SPICE



COLOR SHOWN : FROSTED ASH BLONDE



COLOR SHOWN : DARK VIOLET

PRE-STYLED BANGS

melted HAIRLINE®

LACE FRONT WIG

Leave the hot tools in the drawer! Elianne's wand curls are gorgeous and ready-to-wear.

Primrose is a new flirty bob featuring flipped, face-framing layers.

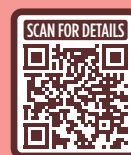
You can change your mind all the time with Matilda! Wear it with pre-styled bangs or without, half up/half down, or try the fun, and daring color options.

- Soft HD Transparent Lace
- 5" Deep Parting
- Completely Pre-Plucked Hairline & Sideburns
- Pre-Attached Wide Elastic Band for Secure Fit
- Fast, Easy & Effortless Glueless Installs
- Natural Baby Hairs
- Redesigned ComfortFit Ear Contour
- Heat Resistant Fiber

ELIANNE 22"



PRIMROSE 12"



MATILDA 26"



COLOR SHOWN : DR4/BL SOFT BLONDE, ASH BROWN, DRST4/GINGER SPICE, DRST4/GINGER SPICE (LEFT TO RIGHT)

AVAILABLE COLORS
1, 1B, 2, ASH BROWN, GOLDEN AMBER, TIRAMISU, DR BROWN SUGAR SWIRL, DR RAGING RED, DR4/BL SOFT BLONDE, DRST4/GINGER SPICE



COLOR SHOWN : DR2/CHOCOLATE SWIRL GINGER AUBURN, FROSTED ASH BLONDE, FROSTED ASH BLONDE (LEFT TO RIGHT)

AVAILABLE COLORS
1, 1B, 2, BURGUNDY, FROSTED ASH BLONDE, GINGER AUBURN, GOLDEN AMBER, DR GINGER TOFFEE, DR2/CHOCOLATE SWIRL, DR4/GOLDEN HONEY BLONDE



COLOR SHOWN : DEEP BURGUNDY, DR4/ASH BROWN, DARK VIOLET, DARK VIOLET (LEFT TO RIGHT)

AVAILABLE COLORS
1, 1B, 2, CHOCOLATE SWIRL, DARK VIOLET, DEEP BURGUNDY, GINGER BROWN, TIRAMISU, WARM APRICOT, DR2/CREAMY TOFFEE, DR4/ASH BROWN, DRF HOT PINK





5" DEEP PARTING

COLOR SHOWN : DRFF4/VANILLA COFFEE MELT

ELLIS 14"



COLOR SHOWN : DR LILAC PINK, DRFF4/VANILLA COFFEE MELT, DRFF4/VANILLA COFFEE MELT (LEFT TO RIGHT)

AVAILABLE COLORS
1, 1B, 2, CREAM SODA, GINGER BROWN, JADE BLUE, RED VELVET, ST CHOCOLATE GOLD, DR LILAC PINK, DR2/CREAMY TOFFEE, DRFF4/VANILLA COFFEE MELT



COLOR SHOWN : OM VANILLA AMBER

GIO



COLOR SHOWN : OM AMBER BROWN, OM VANILLA AMBER, OM VANILLA AMBER (LEFT TO RIGHT)

AVAILABLE COLORS
1, 1B, 2, CHOCOLATE SWIRL, GINGER BROWN, JADE BLUE, RED VELVET, DR4/SANDY BLONDE, OM AMBER BROWN, OM VANILLA AMBER



Lace front[®]
LACE FRONT WIG

Say hello to Ellis! She's a blunt-cut bob with soft feathered bangs available in bold and classic colors. The new Gio wig is an elegant style with a dramatic jaw-length cut. The Vietta bob is cut and curled for maximum volume. A side part adds more drama to the look.

- HD Transparent Lace
- Pre-Plucked Parting
- Breathable, Comfortable Cap
- Natural Baby Hairs
- Fast, Easy & Effortless Glueless Installs
- Heat Resistant Fiber
- Pre-attached Wide Elastic Band for a Secure Fit

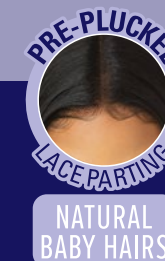
COLOR SHOWN : DRF GINGER BROWN

VIETTA 12"



COLOR SHOWN : DRFF2/CREAMY LATTE, DRF GINGER BROWN, DRF GINGER BROWN (LEFT TO RIGHT)

AVAILABLE COLORS
1, 1B, 2, 34, CREAM SODA, DR RED VELVET, DR2/CREAMY TOFFEE, DRF GINGER BROWN, DRFF2/CREAMY LATTE, ST CHOCOLATE GOLD





5" EXTREME SIDE PART

COLOR SHOWN : DEEP AUBURN



COLOR SHOWN : DRFF2/CREAMY LATTE



5" EXTREME SIDE PART

COLOR SHOWN : DR2/CREAMY TOFFEE



Lace front[®]
LACE FRONT WIG

Aleida is all your favorite trends in one unit: long, feathered side bangs, a 5" extreme part that falls deeper to the side, and colors like Hot Pink and Jade Blue.

Melanie is hotter than the weather! This spicy, wavy style is available in Ginger, Creamy Toffee, Soft Pink, and more!

The new Moriah wig has a blend of an everyday style, a 5" part that falls deeper to the side, and an easy-to-wear glueless construction.

- HD Transparent Lace
- Pre-Plucked Parting
- Breathable, Comfortable Cap
- Natural Baby Hairs
- Fast, Easy & Effortless Glueless Installs
- Heat Resistant Fiber
- Pre-attached Wide Elastic Band for a Secure Fit

ALEIDA 24"



COLOR SHOWN : DRST RED VELVET, DEEP AUBURN, DEEP AUBURN (LEFT TO RIGHT)

AVAILABLE COLORS
1, 1B, 2, CHOCOLATE SWIRL, DARK VIOLET, DEEP AUBURN, GINGER, JADE BLUE, TIRAMISU, DR4/NATURAL HONEY, DRF HOT PINK, DRST RED VELVET



MELANIE 20"



COLOR SHOWN : GINGER, DRFF2/CREAMY LATTE, DRFF2/CREAMY LATTE (LEFT TO RIGHT)

AVAILABLE COLORS
1, 1B, 2, GINGER, HAZELNUT BROWN, RED VELVET, TIRAMISU, DR SOFT PINK, DR2/CREAMY TOFFEE, DRFF2/CREAMY LATTE



MORIAH 12"



COLOR SHOWN : JADE BLUE, DR2/CREAMY TOFFEE, DR2/CREAMY TOFFEE (LEFT TO RIGHT)

AVAILABLE COLORS
1, 1B, 2, 34, CHOCOLATE SWIRL, GINGER, JADE BLUE, RED VELVET, TIRAMISU, 430/PEEKA 3527, DR2/CREAMY TOFFEE, DRF HOT PINK



NATURAL BABY HAIRS



THE DAILY WIG™

PREMIUM SYNTHETIC FIBERS
LACE PART WIG



COLOR SHOWN : TD BLUE SEA

Explore color with Prianna! Subtle highlights and vivid colors make these layers stand out.

- Premium Synthetic Fibers
- Pre-Plucked & Hand-Tied Lace I-Part
- Breathable Mesh Cap
- Heat-Styling Friendly

PRIANNA 20"



COLOR SHOWN : ST ORANGE CREAMSICLE, ST ORANGE CREAMSICLE, ST ORANGE CREAMSICLE (LEFT TO RIGHT)

AVAILABLE COLORS

- 1, 1B, 2, 1B/PEEKA 27613,
425/PEEKA RED99J, TIRAMISU,
DR CHOCOLATE CREAM,
DRFF4/VANILLA COFFEE MELT,
ST ORANGE CREAMSICLE,
TD BLUE SEA



COLOR SHOWN : 1B

premium DUBY®

DIAMOND

100% HUMAN HAIR

HAND-TIED LACE PART WIG

Meet your new signature style. HH-Dottie is a long-lasting, tapered cut with a lace part on a no-fuss cap.

- 100% Human Hair
- Hand-Tied Lace Part
- A Variety of Classic Styles & Color Options
- Sleek Sides
- Affordable
- Durable & Long-Lasting

DOTTIE



COLOR SHOWN : CHESTNUT BROWN, 1B, 1B (LEFT TO RIGHT)

AVAILABLE COLORS

- 1, 1B, 2, S4/30, CHESTNUT BROWN,
DR27, DR30, DR425, DR4/613,
DR GINGER



Fab & Fly™

100% UNPROCESSED HUMAN HAIR

HH-Lavina is the essential wig for mature ladies that want their hair to be as fabulous as their lifestyle.

- 100% Unprocessed Human Hair
- Breathable Mesh Cap
- Comfortable & Secure Fit
- Voluminous & Full
- Easy-to-Wear & Style
- Bleach & Dye Friendly



COLOR SHOWN : NATURAL BLACK

Fab & Fly™ GRAY GLAMOUR

100% HUMAN HAIR

HH-Carlie is cropped, curly, and specially crafted for stylish seniors who want to slay in gray.

- 100% Human Hair
- Breathable Mesh Cap
- Comfortable & Secure Fit
- Voluminous & Full
- Easy-to-Wear & Style
- Also Available in Natural Colors (100% Unprocessed Human Hair)



COLOR SHOWN : 34

HH-LAVINA



COLOR SHOWN : NATURAL BLACK, NATURAL BLACK, NATURAL BLACK (LEFT TO RIGHT)

AVAILABLE COLORS
NATURAL BLACK,
NATURAL BROWN



HH-CARLIE



COLOR SHOWN : 51, 34, 34 (LEFT TO RIGHT)

AVAILABLE COLORS
NATURAL BLACK,
NATURAL BROWN,
34,
44,
51



✓ Bleach ✓ Dye ✓ Customize



Natural Brown is bleach & dye friendly.

wigpop®

SYNTHETIC FULL WIG

colorplay

Jordan features peek-a-boo highlights for a burst of color that's easy to wear and budget-friendly.

- 100% Synthetic Fibers
- Custom Designed Multi-Tone Colors
- Great Value
- Ready to Wear & Go
- Heat-Styling Friendly



COLOR SHOWN : 4/PINK PETAL KISS



COLOR SHOWN : 1B



COLOR SHOWN : 1B

Pretty Quick™

PREMIUM SYNTHETIC FIBER

PONY

Pretty Quick is your party look in a box! Grab Kate for a sleek birthday girl pony or Viv for a wet and wavy-inspired, pool-side style.

- Natural Look & Soft Texture
- Quick & Easy Styling
- Lightweight Drawstring Construction
- Premium Synthetic Fiber

JORDAN 24"

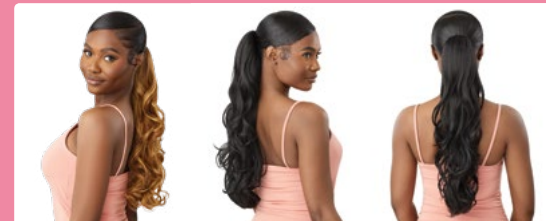


COLOR SHOWN : 4/SAPPHIRE KISS, 6/LEMON LIME KISS, 2/JADE KISS, 2/PURPLE KISS, 2/RED KISS, 4/ORANGE KISS (LEFT TO RIGHT)

AVAILABLE COLORS
1, 1B, 2, 2/JADE KISS, 2/PURPLE KISS, 2/RED KISS, 4/ORANGE KISS, 4/PINK PETAL KISS, 4/SAPPHIRE KISS, 6/LEMON LIME KISS



KATE 24"



COLOR SHOWN : DR2/GOLDEN AMBER, 1B, 1B (LEFT TO RIGHT)

AVAILABLE COLORS
1, 1B, 2, DR CHOCOLATE SWIRL, DR2/CINNAMON WINE, DR2/GINGER BROWN, DR2/GOLDEN AMBER, DR2/TIRAMISU

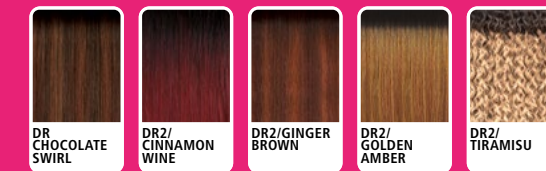



VIV 26"



COLOR SHOWN : DR CHOCOLATE SWIRL, 1B, 1B (LEFT TO RIGHT)

AVAILABLE COLORS
1, 1B, 2, DR CHOCOLATE SWIRL, DR2/CINNAMON WINE, DR2/GINGER BROWN, DR2/GOLDEN AMBER, DR2/TIRAMISU






AFRO LARGE

AVAILABLE COLORS
1, 1B, 2, 4,
2T1/27613, 2T1/30,
2T1/BURGUNDY

COLOR SHOWN : 1B



AFRO MEDIUM

AVAILABLE COLORS
1, 1B, 2, 4,
2T1/27613, 2T1/30,
2T1/BURGUNDY

COLOR SHOWN : 1B



AFRO SMALL

AVAILABLE COLORS
1, 1B, 2, 4,
2T1/27613,
2T1/30, 2T1/60,
2T1/BURGUNDY

COLOR SHOWN : 1B



JESS

AVAILABLE COLORS
1, 1B, 2,
CHOCOLATE SWIRL,
DR2/CINNAMON WINE,
DR2/GINGER BROWN,
DR2/GOLDEN AMBER,
DR2/TIRAMISU

26"

COLOR SHOWN : 1B



KAJO

AVAILABLE COLORS
1, 1B, 2,
DR2/GOLDEN AMBER,
DR CHAI LATTE,
DR DRAGON FRUIT,
DR GINGER TOFFEE,
DR HONEY AUBURN,
FT1B/30

10"

COLOR SHOWN : DR GINGER TOFFEE

Pretty QuickTM

PREMIUM SYNTHETIC FIBER

PONY




SCAN FOR DETAILS

DRAWSTRING PONY

24" KATE

26" VIV



AMBERLY

AVAILABLE COLORS
1, 1B, 2,
DR2/HONEY BROWN,
DR4/GOLDEN HONEY BLONDE,
DR CHAI LATTE,
DR GINGER TOFFEE,
DR RED VELVET,
S1B/30

18"

COLOR SHOWN : S1B/30




ANI

AVAILABLE COLORS
1, 1B, 2, 4, S16/22,
S18/22, S1B/30,
S1B/33, S22/27,
S4/27, S4/30, S6/27,
S6/30

22"

COLOR SHOWN : 1B



BERRY

AVAILABLE COLORS
1, 1B, 2,
2T1/2730,
2T1/30,
2T1/350

16"

COLOR SHOWN : 2T1/30



KATE

AVAILABLE COLORS
1, 1B, 2, DR
CHOCOLATE SWIRL,
DR2/CINNAMON WINE,
DR2/GINGER BROWN,
DR2/GOLDEN AMBER,
DR2/TIRAMISU

24"

COLOR SHOWN : 1B



KINA

AVAILABLE COLORS
1, 1B, 2,
DR CHOCOLATE SWIRL,
DR2/CINNAMON WINE,
DR2/GINGER BROWN,
DR2/GOLDEN AMBER,
DR2/TIRAMISU

22"

COLOR SHOWN : 1B



CORRIE

AVAILABLE COLORS
1, 1B, 2,
DR CHOCOLATE SWIRL,
DR2/CINNAMON WINE,
DR2/GINGER BROWN,
DR2/GOLDEN AMBER,
DR2/TIRAMISU

12"

COLOR SHOWN : 1B



CURLY PUFF

AVAILABLE COLORS
1, 1B, 2,
DR2/CHOCOLATE SWIRL,
DR CHAI LATTE,
DR GINGER TOFFEE,
DR RED VELVET,
S1B/30

12"

COLOR SHOWN : 1B



ELU

AVAILABLE COLORS
1, 1B, 2,
DR2/CHOCOLATE SWIRL,
DR4/GINGER BROWN,
DR4/HONEY BROWN,
DR4/MUSHROOM BLONDE,
DR RED VELVET

12"

COLOR SHOWN : DR4/HONEY BROWN



KINKY CURLY 12"

AVAILABLE COLORS
1, 1B, 2,
DR DRAGON FRUIT,
DR2/CHOCOLATE SWIRL,
DR2/GINGER BROWN,
DR2/MUSHROOM BLONDE,
DRF ESPRESSO BROWN

12"

COLOR SHOWN : DR DRAGON FRUIT



LYLA

AVAILABLE COLORS
1, 1B, 2,
CHOCOLATE SWIRL,
DR2/CINNAMON WINE,
DR2/GINGER BROWN,
DR2/GOLDEN AMBER,
DR2/TIRAMISU,
DRST HONEY BROWN

30"

COLOR SHOWN : DRST HONEY BROWN



MAHINA

AVAILABLE COLORS
1, 1B, 2, 613,
DR2/CHOCOLATE SWIRL,
DR2/GOLDEN AMBER,
DR4/GOLDEN HONEY BLONDE,
DR4/HONEY BROWN,
DR GINGER BROWN,
DR RED VELVET

22"

COLOR SHOWN : DR4/HONEY BROWN



ELVITA

AVAILABLE COLORS
1, 1B, 2,
DR2/CHOCOLATE SWIRL,
DR4/GINGER BROWN,
DR4/HONEY BROWN,
DR4/MUSHROOM BLONDE,
DR RED VELVET

10"

COLOR SHOWN : DR RED VELVET



GIA

AVAILABLE COLORS
1, 1B, 2, 4, 44,
280, 2T1/27,
2T1/30, 2T1B/350,
2T1B/BURGUNDY,
S1B/30

10"

COLOR SHOWN : 2T1/27



INES

AVAILABLE COLORS
1, 1B, 2,
DR2/CHOCOLATE SWIRL,
DR2/HONEY BROWN,
DR4/GOLDEN HONEY BLONDE,
DR CHAI LATTE,
DR GINGER TOFFEE,
DR RED VELVET

20"

COLOR SHOWN : DR GINGER TOFFEE



MAVE

AVAILABLE COLORS
1, 1B, 2,
DR CHOCOLATE SWIRL,
DR2/CINNAMON WINE,
DR2/GINGER BROWN,
DR2/GOLDEN AMBER,
DR2/TIRAMISU

30"

COLOR SHOWN : 1B



MAY

AVAILABLE COLORS
1, 1B, 2,
DR CHOCOLATE SWIRL,
DR2/CINNAMON WINE,
DR2/GINGER BROWN,
DR2/GOLDEN AMBER,
DR2/TIRAMISU

26"

COLOR SHOWN : 1B



MIMI 20"

AVAILABLE COLORS
1, 1B, 2, 4, S16/22,
S18/22, S1B/30, S1B/33,
S22/27, S4/27, S4/30,
S6/27, S6/30

20"

COLOR SHOWN : 1B

MIMI 24"

AVAILABLE COLORS
1, 1B, 2, 4,
LT1/30,
LT1B/2730,
LT1B/BU,
S1B/30,
S4/30

COLOR SHOWN : LT1B/2730

MIRI

AVAILABLE COLORS
1, 1B, 2, 4, 44,
280, 2T1/27,
2T1/30,
2T1B/350,
2T1B/BURGUNDY,
S1B/30

16"

COLOR SHOWN : 2T1B/30

MONET

AVAILABLE COLORS
1, 1B, 2, 4,
S1B/30, S1B/33,
S4/27, S4/30

28"

COLOR SHOWN : 1

TESS

AVAILABLE COLORS
1, 1B, 2, 4,
S1B/30,
S1B/33,
S1B/BURGUNDY,
S4/30

22"

COLOR SHOWN : 1B

VANNA

AVAILABLE COLORS
1, 1B, 2, 4,
S1B/30,
S1B/33,
S4/27,
S4/30

22"

COLOR SHOWN : S1B/30

VIV

AVAILABLE COLORS
1, 1B, 2,
DR CHOCOLATE SWIRL,
DR2/CINNAMON WINE,
DR2/GINGER BROWN,
DR2/GOLDEN AMBER,
DR2/TIRAMISU

26"

COLOR SHOWN : 1B

NADIRAH 32"

AVAILABLE COLORS
1, 1B, 2,
2T1/27, 2T1/30,
DR DARK TEAL,
DR RED BURGUNDY,
DR ROSE GOLD,
DR SMOKEY GRAY,
S1B/30

COLOR SHOWN : S1B/30

**NEESHA
BODY 16"**

AVAILABLE COLORS
1, 1B, 2,
DR2/CINNAMON SPICE,
DR2/HAZELNUT,
DR2/HONEY BROWN,
DR BLACK CHERRY,
DR SIENNA COPPER

**NEESHA
SOFT & NATURAL**

COLOR SHOWN : DR2/CINNAMON SPICE

**NEESHA
BODY
WAVE 18"**

AVAILABLE COLORS
1, 1B, 2,
DR2/CINNAMON SPICE,
DR2/HAZELNUT,
DR2/HONEY BROWN,
DR BLACK CHERRY,
DR SIENNA COPPER

**NEESHA
SOFT & NATURAL**

COLOR SHOWN : DR2/HAZELNUT

**BEACH
WAVE 28"**

AVAILABLE COLORS
1, 1B, 2, 4,
DR GINGER BROWN,
DR HAZELNUT BROWN,
DR HONEY BROWN,
DR MULLED WINE,
F4/30

**Wet Wavy
STYLE**

COLOR SHOWN :
DR HAZELNUT BROWN

**DEEP
CURL 24"**

AVAILABLE COLORS
1, 1B, 2, 4,
DR GINGER BROWN,
DR HAZELNUT BROWN,
DR HONEY BROWN,
DR MULLED WINE,
F4/30

**Wet Wavy
STYLE**

COLOR SHOWN : 1B

**DEEP
TWIST 22"**

AVAILABLE COLORS
1, 1B, 2,
CHOCOLATE SWIRL,
DR2/CINNAMON WINE,
DR2/GOLDEN AMBER,
DR2/GINGER BROWN,
DRST HONEY BROWN

**Wet Wavy
STYLE**

COLOR SHOWN : 1B

NENE

AVAILABLE COLORS
1, 1B, 2, 4,
S1B/30,
S1B/33,
S4/27,
S4/30

14"

COLOR SHOWN : 1

NENE 18"

AVAILABLE COLORS
1, 1B, 2, 4,
S1B/30,
S1B/33,
S4/30

18"

COLOR SHOWN : 1B

OLA

AVAILABLE COLORS
1, 1B, 2,
CHOCOLATE SWIRL,
DR2/CINNAMON WINE,
DR2/GINGER BROWN,
DR2/GOLDEN AMBER,
DR2/TIRAMISU,
DRST HONEY BROWN

20"

COLOR SHOWN : 1B

**DEEP
WAVE 20"**

AVAILABLE COLORS
1, 1B, 2,
CHOCOLATE SWIRL,
DR2/CINNAMON WINE,
DR2/GOLDEN AMBER,
DR2/GINGER BROWN,
DRST HONEY BROWN

**Wet Wavy
STYLE**

COLOR SHOWN : 1B

**NATURAL
WAVE 22"**

AVAILABLE COLORS
1, 1B, 2,
CHOCOLATE SWIRL,
DR2/CINNAMON WINE,
DR2/GOLDEN AMBER,
DR2/GINGER BROWN,
DRST HONEY BROWN

**Wet Wavy
STYLE**

COLOR SHOWN : 1B

CUTIE

AVAILABLE COLORS
1, 1B, 2, 4, 950,
2T1/30,
2T1B/BURGUNDY,
S1B/30,
S4/30

**pineapple
ponytail**

COLOR SHOWN : 2T1/30

SAANA

AVAILABLE COLORS
1, 1B, 2,
DR2/CHOCOLATE SWIRL,
DR2/HONEY BROWN,
DR4/GOLDEN HONEY BLONDE,
DR CHAI LATTE,
DR GINGER TOFFEE,
DR RED VELVET

24"

COLOR SHOWN : DR2/CHOCOLATE SWIRL

SHAYLA 36"

AVAILABLE COLORS
1, 1B, 2, 613,
DR2/CINNAMON WINE,
DR2/GOLDEN AMBER,
DR2/TIRAMISU,
S1B/30

36"

COLOR SHOWN : 1B

TAJO

AVAILABLE COLORS
1, 1B, 2,
DR2/GOLDEN AMBER,
DR CHAI LATTE,
DR DRAGON FRUIT,
DR GINGER TOFFEE,
DR HONEY AUBURN,
FT1B/30

16"

COLOR SHOWN : DR DRAGON FRUIT

HOTTIE

AVAILABLE COLORS
1, 1B, 2, 4, 950,
2T1/30,
2T1B/BURGUNDY,
S1B/30,
S4/30

**pineapple
ponytail**

COLOR SHOWN :
2T1B/BURGUNDY

SOFTIE

AVAILABLE COLORS
1, 1B, 2, 4, 950,
2T1/30,
2T1B/BURGUNDY,
S1B/30,
S4/30

**pineapple
ponytail**

COLOR SHOWN : 1B

SWEETIE

AVAILABLE COLORS
1, 1B, 2, 4,
2T1/30,
2T1B/BURGUNDY,
S1B/30,
S4/30

**pineapple
ponytail**

COLOR SHOWN : 2T1/30

Quick PONY



AFRO PUFF DUO SMALL

AVAILABLE COLORS
1, 1B, 2, 4,
2T1/30,
2T1/BURGUNDY,
S1B/30, S4/27

COLOR SHOWN : 1B



AFRO PUFF DUO LARGE

AVAILABLE COLORS
1, 1B, 2, 4,
2T1/30,
2T1/BURGUNDY,
S1B/30, S4/27

COLOR SHOWN : 1B



AFRO PUFF XL

AVAILABLE COLORS
1, 1B, 2, 4,
2T1/30,
2T1/BURGUNDY,
S1B/30, S4/27

COLOR SHOWN : 1B



ESSIE

AVAILABLE COLORS
1, 1B, 2, 4,
950,
2T1/27,
2T1/30,
2T1/BURGUNDY,
S1B/30,
S4/30

COLOR SHOWN : 2T1/30



TAMARA

AVAILABLE COLORS
1, 1B, 2, 4,
950,
2T1/27,
2T1/30,
2T1/BURGUNDY,
S1B/30,
S4/30

COLOR SHOWN : S4/30



Quick PONY

Bang x bun



KAY

AVAILABLE COLORS
1, 1B, 2, 4,
950, 2T1/30,
2T1/425,
S1B/30,
S4/30

COLOR SHOWN : 1B



NIKKA

AVAILABLE COLORS
1, 1B, 2, 4,
950, 2T1/30,
2T1/425,
S1B/30,
S4/30

COLOR SHOWN : 2T1/30



PALOMA

AVAILABLE COLORS
1, 1B, 2, 4,
950, 2T1/30,
2T1/425,
S1B/30,
S4/30

COLOR SHOWN : 2T1/30



TOYA

AVAILABLE COLORS
1, 1B, 2, 4,
950, 2T1/30,
2T1/425,
S1B/30,
S4/30

COLOR SHOWN : 2T1/30



CURLETTE SMALL

AVAILABLE COLORS
1, 1B, 2, 4, 950,
2T1B/27, 2T1B/30,
2T1B/BURGUNDY

COLOR SHOWN : 2T1B/27

CURLETTE MEDIUM

AVAILABLE COLORS
1, 1B, 2, 4, 950,
2T1B/27, 2T1B/30,
2T1B/BURGUNDY

COLOR SHOWN : 2T1B/BURGUNDY

TIMELESS

PINEAPPLE ponytail

Inspired by: *Curlette*



Quick PONY

Bang x pony




ASTRID

AVAILABLE COLORS
1, 1B, 2,
613, 2T1/30,
2T1/425,
99J, DR2730,
DR425,
S1B/30, S4/27

COLOR SHOWN : DR2730



CYNDI

AVAILABLE COLORS
1, 1B, 2, 4,
950,
2T1/27,
2T1/30,
2T1/BURGUNDY,
S1B/30,
S4/30

COLOR SHOWN : 950



INGRID

AVAILABLE COLORS
1, 1B, 2, 613,
2T1/30,
2T1/425,
99J,
DR2730,
DR425,
S1B/30,
S4/27

COLOR SHOWN : DR425



3B-BOUNCY CURLS 18"

AVAILABLE COLORS
1, 1B, 2,
2T1/30,
2T1/350,
2T1/BURGUNDY,
S1B/30

COLOR SHOWN : 1B

4C-COILY

AVAILABLE COLORS
1, 1B, 2, 4,
2T1/30,
2T1/BURGUNDY

COLOR SHOWN : 2



Big Beautiful Hair

DRAWSTRING PONYTAIL

PREMIUM SYNTHETIC FIBER



KAYLA

AVAILABLE COLORS
1, 1B, 2, 4,
950,
2T1/27,
2T1/30,
2T1/BURGUNDY,
S1B/30,
S4/30

COLOR SHOWN : S1B/30



NASHA

AVAILABLE COLORS
1, 1B, 2, 4,
950,
2T1/27,
2T1/30,
2T1/BURGUNDY,
S1B/30,
S4/30

COLOR SHOWN : 1B



SOLANO

AVAILABLE COLORS
1, 1B, 2, 4,
950,
2T1/27,
2T1/30,
2T1/BURGUNDY,
S1B/30,
S4/30

COLOR SHOWN : 2T1/27



4A-KINKY

AVAILABLE COLORS
1, 1B, 2, 4,
2T1/30,
2T1/BURGUNDY

COLOR SHOWN : 2T1/30



3C-WHIRLY

AVAILABLE COLORS
1, 1B, 2, 4,
2T1/30,
2T1/BURGUNDY

COLOR SHOWN : 2T1/BURGUNDY




4A-KINKY KOILS 14"



AVAILABLE COLORS
1, 1B, 2,
2T1/30,
2T1/350,
2T1/BURGUNDY,
S1B/30

COLOR SHOWN : 2T1/350

Lil LOOKS
100% PREMIUM SYNTHETIC FIBER


DRAWSTRING PONYTAIL



BRIA

AVAILABLE COLORS
1, 1B, 2, 4,
2T1/425,
DR2/GINGER BROWN,
DR27



COLOR SHOWN : 1B

BEADED BOX BRAIDS 12"

AVAILABLE COLORS
1, 1B, 2, 4,
2T1/27, 2T1/30,
2T1/BURGUNDY



COLOR SHOWN : 1B

COILY PUFF

AVAILABLE COLORS
1, 1B, 2, 4,
2T1/27,
2T1/30,
2T1B/BURGUNDY



COLOR SHOWN : 1B

BEADED TWISTS 12"

AVAILABLE COLORS
1, 1B, 2, 4,
2T1/27,
2T1/30,
2T1B/BURGUNDY



COLOR SHOWN : 1B

GOLD CUFFED BOMB TWISTS 12"

AVAILABLE COLORS
1, 1B, 2, 4,
2T1/27, 2T1/30,
2T1B/BURGUNDY



COLOR SHOWN : 1B

GOLD ACCENTED NATURAL WAVE 12"

AVAILABLE COLORS
1, 1B, 2, 4,
2T1/27, 2T1/30,
2T1B/BURGUNDY



COLOR SHOWN : 1B

DUO PUFFS

AVAILABLE COLORS
1, 1B, 2, 4,
2T1/27,
2T1/30,
2T1B/BURGUNDY



COLOR SHOWN : 2T1/30

SPRINGY COILS 8"

AVAILABLE COLORS
1, 1B, 2, 4,
2T1/27,
2T1/30,
2T1B/BURGUNDY



COLOR SHOWN : 1B

MINI DUO PUFFS

AVAILABLE COLORS
1, 1B, 2, 4,
2T1/27,
2T1/30,
2T1B/BURGUNDY



COLOR SHOWN : 1B

MINI COILY PUFF

AVAILABLE COLORS
1, 1B, 2, 4,
2T1/27,
2T1/30,
2T1B/BURGUNDY



COLOR SHOWN : 1B

BUN

BOA BOMB TWIST MEDIUM

AVAILABLE COLORS
1, 1B, 2, 4,
DRAGON FRUIT,
F1B/350,
MACCHIATO



COLOR SHOWN : MACCHIATO

BANG

CLASSIC BLUNT BANG

AVAILABLE COLORS
1, 1B, 2,
F1B/27, F1B/30,
F1B/350,
F1B/425



COLOR SHOWN : F1B/30

BANG

CRESCENT CHINA BANG

AVAILABLE COLORS
1, 1B, 2,
F1B/27, F1B/30,
F1B/350,
F1B/425



COLOR SHOWN : F1B/27

BANG

SLEEK SWOOPED BANG

AVAILABLE COLORS
1, 1B, 2,
F1B/27,
F1B/30,
F1B/350,
F1B/425



COLOR SHOWN : F1B/425

BUN & BANG

NICOLA

AVAILABLE COLORS
1, 1B, 2, 4,
2T1/30,
2T1B/BURGUNDY,
F1B/30,
F1B/350



COLOR SHOWN : F1B/350

BUN & BANG

ANGELINE

AVAILABLE COLORS
1, 1B, 2, 4,
2T1/BURGUNDY
F1B/30



COLOR SHOWN : 2T1/BURGUNDY

ALAID

AVAILABLE COLORS
1, 1B, 2,
613, 99J,
2T1/30,
2T1/425,
DR2730,
DR425,
S1B/30,
S4/27

20"



COLOR SHOWN : DR2730

ANNORA

AVAILABLE COLORS
1, 1B, 2,
613, 99J,
2T1/30,
2T1/425,
DR2730,
DR425,
S1B/30,
S4/27

18"



COLOR SHOWN : DR2730

AURYN

AVAILABLE COLORS
1, 1B, 2,
613, 99J,
2T1/30,
2T1/425,
DR2730,
DR425,
S1B/30,
S4/27

14"



COLOR SHOWN : 2T1/30

NOVELIA

AVAILABLE COLORS
1, 1B, 2,
613, 99J,
2T1/30,
2T1/425,
DR2730,
DR425,
S1B/30,
S4/27

16"



COLOR SHOWN : 1B

NOVIA

AVAILABLE COLORS
1, 1B, 2,
613, 99J,
2T1/30,
2T1/425,
DR2730,
DR425,
S1B/30,
S4/27

12"



COLOR SHOWN : 2T1/30

SARAID

AVAILABLE COLORS
1, 1B, 2,
613, 99J,
2T1/30,
2T1/425,
DR2730,
DR425,
S1B/30,
S4/27

22"



COLOR SHOWN : DR425

Pretty Quick
PREMIUM SYNTHETIC FIBER

PONY

BUN



BANG





BUN & BANG




Pretty Quick
PREMIUM SYNTHETIC FIBER

PONY

BANG X PONY



BOHEMIAN COILS 18"

AVAILABLE COLORS
1, 1B, 2, 2T1/30, 2T1/350, 2T1/BURGUNDY, 51B/30

COLOR SHOWN : 1B



BOHO BOX BRAID 32"

AVAILABLE COLORS
1, 1B, 2, DR1B/2T3027, DR1B/2T350, DR4/2T27613, DR BURGUNDY

COLOR SHOWN : 1B



BONE STRAIGHT 34"

AVAILABLE COLORS
1, 1B, 2, 4, 2T1/27613, 2T1/30, 2T1/60, 2T1/BURGUNDY

Velvety Soft

COLOR SHOWN : DR RED VELVET



NATURAL BRAIDED FISHTAIL 42"

AVAILABLE COLORS
1, 1B, DR2T1B/2730, DR2T1B/30, DR2T1B/350

COLOR SHOWN : DR2T1B/30



NATURAL BRAIDED PONYTAIL 32"

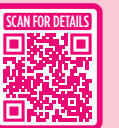
AVAILABLE COLORS
1, 1B, DR2T1B/2730, DR2T1B/30, DR2T1B/350

COLOR SHOWN : 1B

Pretty Quick™

PREMIUM SYNTHETIC FIBER


WRAP PONY




CRIMP WAVE 30"

AVAILABLE COLORS
1, 1B, 613, DR4/ASH BLONDE, DR COPPER ORANGE, ST HONEY BROWN

COLOR SHOWN : 1B



DEEP WAVE 24"

AVAILABLE COLORS
1, 1B, 613, DR4/ASH BLONDE, DR COPPER ORANGE, ST HONEY BROWN

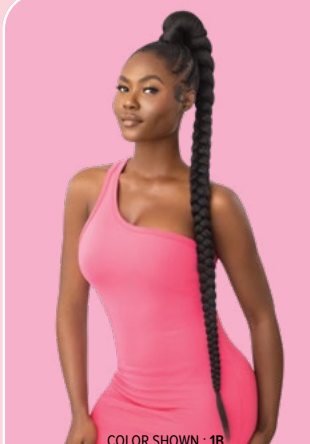
COLOR SHOWN : DR COPPER ORANGE



FINGER WAVE 24"

AVAILABLE COLORS
1, 1B, 2, 51B/30

COLOR SHOWN : 1B



NATURAL BRAIDED PONYTAIL 42"

AVAILABLE COLORS
1, 1B, DR2T1B/2730, DR2T1B/30, DR2T1B/350

COLOR SHOWN : 1B



NATURAL WAVE 24"

AVAILABLE COLORS
1, 1B, 613L, 3DR COPPER GOLD, 3DR FIRE SUNSET, 3DR SALTED CARAMEL, DRF2730

COLOR SHOWN : 1B



JUMBO KINKY STRAIGHT 24"

AVAILABLE COLORS
1, 1B, 2

COLOR SHOWN : 1B



JUMBO KINKY STRAIGHT 30"

AVAILABLE COLORS
1, 1B, 2


COLOR SHOWN : 1B



KINKY STRAIGHT 28"

AVAILABLE COLORS
1, 1B, 2, DR GINGER BROWN, DR HONEY AUBURN, DR RED VELVET, DR2/CHOCOLATE SWIRL, DRF ESPRESSO BROWN

COLOR SHOWN : 1B



NATURAL WAVE 28"

AVAILABLE COLORS
1, 1B, 2, DR GINGER BROWN, DR RED VELVET, DRST HONEY BROWN, TIRAMISU

COLOR SHOWN : 1B



SLEEK STRAIGHT 16"

AVAILABLE COLORS
1, 1B, 613, DR2/CINNAMON WINE, DR2/GOLDEN AMBER, DR4/ASH BLONDE, DR COPPER ORANGE

COLOR SHOWN : 1B



LOOSE BODY 28"

AVAILABLE COLORS
1, 1B, 2, PAPRIKA SPICE, DR2/SUNSET COPPER, DR4/BROWN SUGAR MELT, DR4/SANDY BLONDE MELT

COLOR SHOWN : 1B



LOOSE CURL 26"

AVAILABLE COLORS
1, 1B, 613, DR30, DR4/2730, 51B/30

COLOR SHOWN : 1B



MEDIUM BOX BRAID 26"

AVAILABLE COLORS
1, 1B, 2, 2T1/2730, 2T1/30, 2T1/350, DR BLUE, DR PINK, DR PURPLE, DR RAINBOW

COLOR SHOWN : 2T1/350



SLEEK STRAIGHT 24"

AVAILABLE COLORS
1, 1B, 613, DR2/CINNAMON WINE, DR2/GOLDEN AMBER, DR4/ASH BLONDE, DR COPPER ORANGE

COLOR SHOWN : 1B



SPRINGY AFRO

AVAILABLE COLORS
1, 1B, 2

COLOR SHOWN : 1B





My[®] TRESSES

100% UNPROCESSED HUMAN HAIR

GOLD LABEL



BULK

PRE-STRETCHED

100% UNPROCESSED HUMAN HAIR BULK

#1 BEST-SELLER FOR
BOHO
STYLES

WITH WATERWAVE
FRO TWIST +
MYTRESSES GOLD
BULK HAIR



Twisted Up
WATERWAVE FRO
TWIST 22" 2X



My
TRESSES
100% UNPROCESSED HUMAN HAIR
BULK



STYLE & COLOR SHOWN : NATURAL DEEP BULK 18" | T1B/30



NATURAL DEEP BULK

AVAILABLE LENGTHS
10", 12", 14", 18", 22", 24"
AVAILABLE COLORS
NATURAL BLACK, NATURAL,
27, 30, 425, T1B/27, T1B/30,
T1B/425 (FOR ALL LENGTHS)
130S, COPPER ORANGE
(ONLY FOR 18")



LOOSE DEEP BULK

AVAILABLE COLORS
NATURAL BLACK,
NATURAL, 27,
30, 425, T1B/27,
T1B/30, T1B/425



NATURAL STRAIGHT BULK

AVAILABLE LENGTHS
14", 18", 24"
AVAILABLE COLORS
NATURAL,
NATURAL BLACK



NATURAL BODY BULK

AVAILABLE LENGTHS
18", 24"
AVAILABLE COLORS
NATURAL,
NATURAL BLACK



GYPSY WAVE BULK

AVAILABLE LENGTHS
18", 24"
AVAILABLE COLORS
NATURAL,
NATURAL BLACK



NATURAL 4C KINKY BULK

AVAILABLE COLORS
NATURAL BLACK,
NATURAL, 27, 30,
425, DEEP BLUE,
DEEP PURPLE, HOT PINK



WET & WAVY

W&W SPLASH DEEP BULK

AVAILABLE LENGTHS
18", 24"
AVAILABLE COLORS
NATURAL,
NATURAL BLACK



WET & WAVY

W&W SPLASH CORK BULK

AVAILABLE LENGTHS
14", 18", 24"
AVAILABLE COLORS
NATURAL,
NATURAL BLACK