

DECEMBER 2023

®

Outre



STYLE & COLOR SHOWN:
SWIRLISTA | SWIRL 101 | FROSTED ASH BLONDE (LEFT)
SWIRLISTA | SWIRL 102 | DRST6/VANILLA TART (RIGHT)



TIS THE SEASON FOR
**BABYHAIR
SWIRLS**

Outre
85 Oxford Drive,
Moonachie, NJ 07074
USA

IN THIS ISSUE

Meet Swirlista! Featuring a more pre-plucked hairline for a high-end, customized wig look; extra lace space for baby hair styling; and a curvier hairline for an ultra-natural look.

HH-BULK 03  <p>PRE-STRETCHED BULK NATURAL DEEP BULK 22"</p>	BRAID 04  <p>PRE-STRETCHED BRAID 42" 3X PRE-STRETCHED BRAID 52" 3X</p>	BRAID 06  <p>ORIGINAL BOHO GODDESS LOCS 12" 3X, 24" 3X</p>	BRAID 08  <p>BOHO BOX BRAID 22" 3X ORIGINAL BOX BRAID 18" 3X, 24" 3X</p>
LACE WIG 10  <p>BOHO BOX BRAIDS 30" FRENCH CURL BOX BRAIDS 32" 13" x 4" LACE FRONTAL WIG</p>	LACE WIG 12  <p>SWIRL 101 SWIRL 102 SWIRL 103</p>	LACE WIG 16  <p>AIRTIED</p>	LACE WIG 18  <p>ALORA TAMALA ARIA</p>
LACE WIG 20  <p>KIE KRISTYN</p>	LACE WIG 22  <p>AUSTIN ROSALIA LEA</p>	LACE WIG 24  <p>EIDA ZANA</p>	LACE WIG 26  <p>EVERY29 EVERY30 EVERY31</p>
LACE PART WIG 28  <p>KERA</p>	FULL WIG 29  <p>LAINA</p>	HH-FULL WIG 30  <p>HH-DERIA</p>	HH-WEAVE 31  <p>YAKI NATURAL PERM YAKI + CLOSURE</p>
HH-WEAVE 32  <p>MYLK CURLY</p>	HH-WEAVE 34  <p>MYLK 3PCS</p>		

NEW LENGTH 22"



My TRESSES
100% UNPROCESSED HUMAN HAIR
GOLD LABEL

PRE-STRETCHED
100% UNPROCESSED HUMAN HAIR BULK

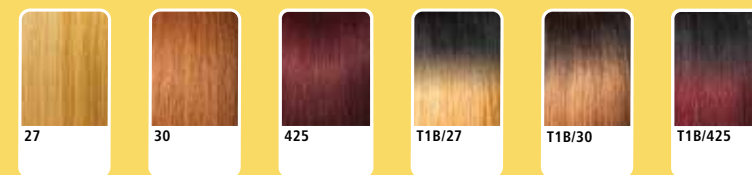
- 100% Unprocessed Human Hair
- 9+ Quality Grade Bundle Hair
- Comfortable, Itch-Free Wear
- Pre-Stretched & Gentle on Fingers
- Soft on Skin & Lightweight
- Dye & Customize

Create boho braids, locs and more with 100% Unprocessed Bulk Human Hair in the NEW Natural Deep 22" style.

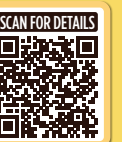
Explore the Mytresses Bulk Human Hair line and mix and match to make your unique boho box braids and locs styles.

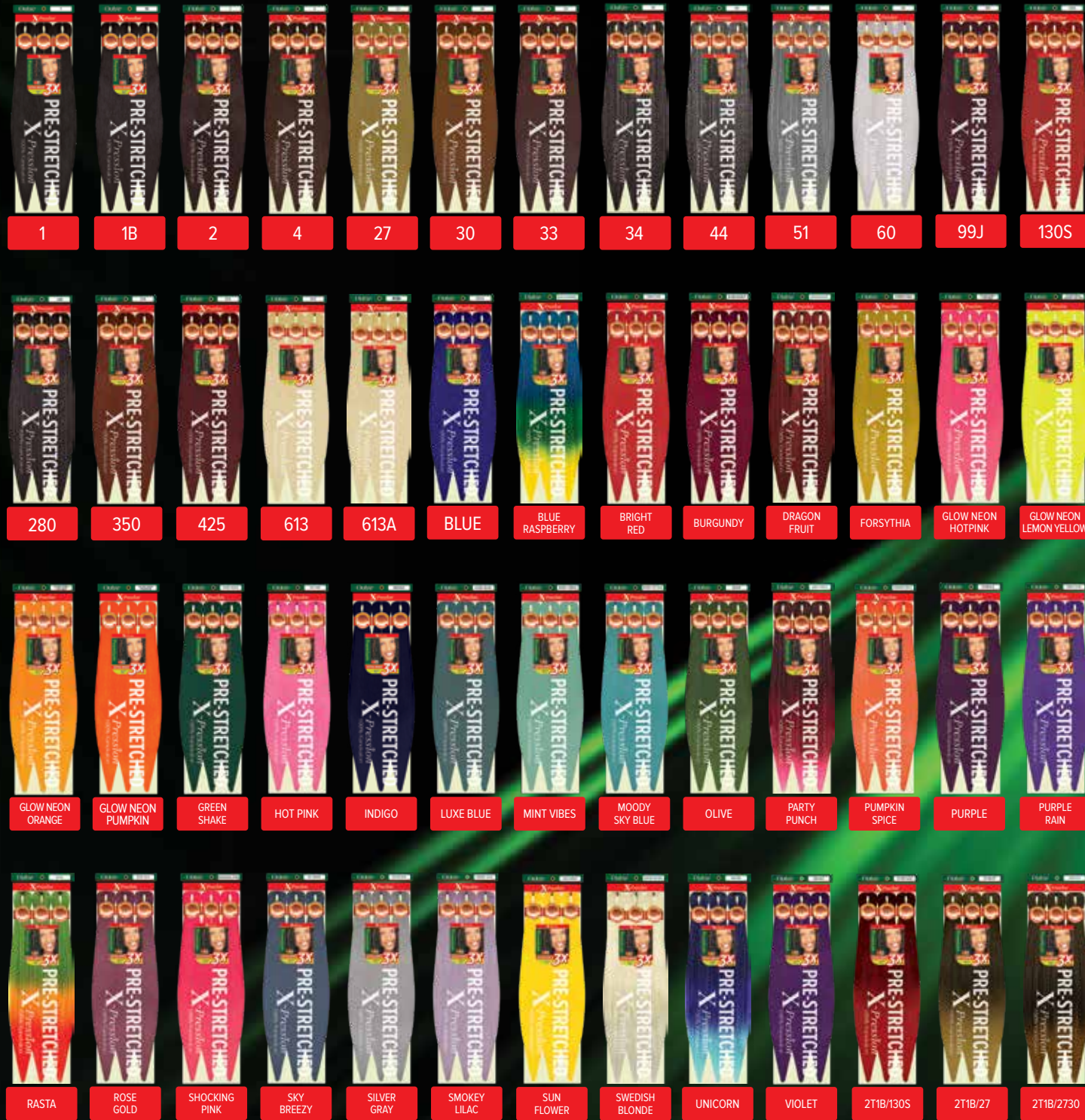


NATURAL DEEP BULK 22"



AVAILABLE COLORS:
NATURAL BLACK, NATURAL, 27,
30, 425, T1B/27, T1B/30, T1B/425





NEW COLORS

42" 52"



X-Pression®

PRE-STRETCHED

X-Pression's world famous fiber quality now has even more pre-mixed colors!

- Pre-Stretched & Pre-Layered
- Quickest Install
- Easy to Braid
- Easy to Manage
- Ultra Lightweight
- Hot Water Set Friendly
- Tangle-Free



PRE-STRETCHED BRAID 42" 3X

AVAILABLE COLORS :
 1, 130S, 1B, 2, 27, 30, 33, 34, 350, 4, 425, 44, 51, 60, 280, 613, 613A, 99J, 2T1B/130S, 2T1B/27, 2T1B/2730, 2T1B/27613, 2T1B/30, 2T1B/33, 2T1B/350, 2T1B/60, 2T1B/BLUE, 2T1B/BURGUNDY, 2T1B/FORSYTHIA, 2T1B/INDIGO, 2T1B/LUXE BLUE, 2T1B/MINT VIBES, 2T1B/OLIVE, 2T1B/SHOCKING PINK, BLUE, BURGUNDY, DRAGON FRUIT, FORSYTHIA, INDIGO, LUXE BLUE, MINT VIBES, OLIVE, PURPLE, SHOCKING PINK, VIOLET, M1B/30, M1B/350, M1B/425, M4/30, M4/27/30, M4/27/613, M4/27/30/613, M27/613, M27/30/613, M27/30, M950/425/350/130S

PRE-STRETCHED BRAID 52" 3X

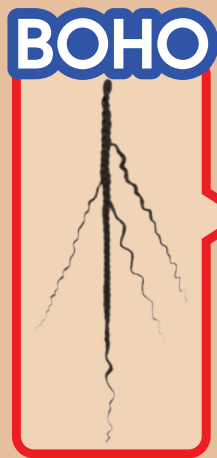
AVAILABLE COLORS :
 1, 1B, 2, 4, 27, 30, 33, 34, 44, 51, 60, 99J, 130S, 280, 350, 425, 613, 613A, BLUE, BLUE RASPBERRY, BRIGHT RED, BURGUNDY, DRAGON FRUIT, FORSYTHIA, GLOW NEON HOTPINK, GLOW NEON LEMON YELLOW, GLOW NEON ORANGE, GLOW NEON PUMPKIN, GREEN SHAKE, HOT PINK, INDIGO, LUXE BLUE, MINT VIBES, MOODY SKY BLUE, OLIVE, PARTY PUNCH, PUMPKIN SPICE, PURPLE, PURPLE RAIN, RASTA, ROSE GOLD, SHOCKING PINK, SKY BREEZY, SILVER GRAY, SMOKEY LILAC, SUN FLOWER, SWEDISH BLONDE, UNICORN, VIOLET, 2T1B/130S, 2T1B/27, 2T1B/2730, 2T1B/27613, 2T1B/30, 2T1B/33, 2T1B/350, 2T1B/60, 2T1B/BLUE, 2T1B/BURGUNDY, 2T1B/FORSYTHIA, 2T1B/INDIGO, 2T1B/LUXE BLUE, 2T1B/MINT VIBES, 2T1B/OLIVE, 2T1B/PURPLE, 2T1B/ROSE GOLD, 2T1B/SHOCKING PINK, 2T1B/SILVER GRAY, M1B/30, M1B/350, M1B/425, M4/30, M4/27/30, M4/27/613, M4/27/30/613, M27/613, M27/30/613, M27/30, M950/425/350/130S

X-Pression® Twisted Up® 100% PREMIUM SYNTHETIC FIBER



X-Pression's style-in-a-pack achieves Boho Goddess Locs look fast with DIY installs.

- Premium Synthetic Fiber
- Quick, Long Lasting Protective Style
- Soft Texture
- 100% Handcrafted
- Nonflammable
- Mix and Match with the Twisted Up line

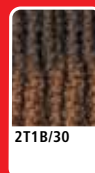
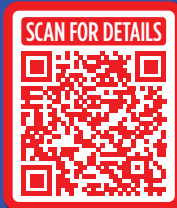


COLOR SHOWN : DRAGON FRUIT

AVAILABLE COLORS

- 1, 1B, 2, 4,
2T1B/27, 2T1B/30, CT/27,
CT/30, CT/350, CT/425,
MACCHIATO, DRAGON FRUIT

ORIGINAL BOHO GODDESS LOCS 24" 3X



X-Pression® Twisted Up® 100% PREMIUM SYNTHETIC FIBER

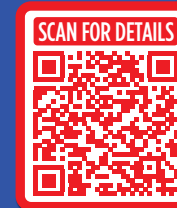
X-Pression's style-in-a-pack achieves Boho Goddess Locs look fast with DIY installs.

- Premium Synthetic Fiber
- Quick, Long Lasting Protective Style
- Soft Texture
- 100% Handcrafted
- Nonflammable
- Mix and Match with the Twisted Up line



COLOR SHOWN : 2T1B/27

ORIGINAL BOHO GODDESS LOCS 12" 3X



AVAILABLE COLORS

- 1, 1B, 2, 4, 2T1B/27,
2T1B/30, MACCHIATO,
DRAGON FRUIT



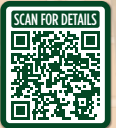


X-Pression®
Twisted Up®

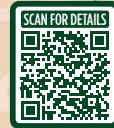
**OUTRE BOX BRAIDS:
SLAY THE DIY WAY**



Available in all new colors, Outre's style-in-a-pack makes boho braids and locs fast and easy. Simply cornrow, crochet, and go!



COLOR SHOWN : T1B/425



COLOR SHOWN : 2T1B/27



COLOR SHOWN : CT/Dragon Fruit

ORIGINAL BOX BRAID 18" / 24" 3X

BOHO BOX BRAID 22" 3X

SPECIAL COLORS

NEW COLORS



SPECIAL COLORS

NEW COLORS



Outre®

13"x4" LACE FRONTAL WIG

Get a professional long, knotless square part, Boho Box Braid look faster than ever, without an all-day salon visit.

- 13"x4" Frontal HD Lace
- Knotless Braid Style
- Any Way Parting
- Lightweight & Natural Density
- Soft, Flexible Braids
- Baby Hair Included
- Pre-Attached Elastic Band for a Flat Fit
- Fast, Easy & Effortless Glueless Installs



COLOR SHOWN : DR4/CREAMY CAPPUCCINO



BOHO BOX BRAIDS 30"



COLOR SHOWN : CT/Dragon Fruit, DR4/Creamy Cappuccino (Left to Right)

AVAILABLE COLORS
1, 1B, 2,
CT/Dragon Fruit,
CT/Macchiato,
DR4/Chocolate Caramel,
DR4/Creamy Cappuccino



COLOR SHOWN : DR4/VANILLA LATTE



Outre®

13"x4" LACE FRONTAL WIG

Wear natural-looking, French Curl Box braids, whenever and however you want.

- 13"x4" Frontal HD Lace
- Knotless Braid Style
- Any Way Parting
- Lightweight & Natural Density
- Soft, Flexible Braids
- Baby Hair Included
- Pre-Attached Elastic Band for a Flat Fit
- Fast, Easy & Effortless Glueless Installs

FRENCH CURL BOX BRAIDS 32"



COLOR SHOWN : DR4/Chocolate Caramel, DR4/Vanilla Latte (Left to Right)

AVAILABLE COLORS
1, 1B,
DR BURGUNDY,
DR4/Chocolate Caramel,
DR4/Creamy Cappuccino,
DR4/Vanilla Latte



NEW

**melted
HAIRLINE.**

SWIRLISTA™

L A C E F R O N T W I G

PRETTY GIRLS SWIRL.

Get more lace space to swirl your baby hairs, and achieve a supreme melt with Swirlista from Melted Hairline.

Scroll through social media and you'll see that all the hottest celebrity hairstyles have bold, swirly baby hairs and a super plucked hairline.

Swirlista makes these celebrity hairstyles easy and more affordable! It pairs convenient, ready-to-wear styles with an upgraded hairline, and baby hair friendly features.

What features make Swirlista different? It has a deeper, wider hand-tied lace area, and an improved, more contoured hairline shape that is impeccably pre-plucked. Slick your baby hairs into stunning swirls, and recreate the styled parting and edges of high-priced, human hair wigs.

Why settle when you can swirl with Swirlista!



**DEEPER, WIDER
HAND-TIED
LACE HAIRLINE**



**5" DEEP
C-SHAPE
PARTING**



STYLE / COLOR SHOWN:
SWIRL103_1B (LEFT)
SWIRL101_FROSTED ASH BLONDE (CENTER)
SWIRL102_DRST6/VANILLA TART (RIGHT)



COLOR SHOWN : SPICED COGNAC



COLOR SHOWN : GINGER AUBURN



COLOR SHOWN : DR GINGER TOFFEE

melted HAIRLINE.
SWIRLISTA™
L A C E F R O N T W I G

- More Space to Finesse your Baby Hairs
- Pre-Plucked with Precision
- Super Natural Shape and Density
- 5" Deep C-Shape Parting
- Pre-Attached Wide Elastic Band for Glueless Installs
- Redesigned ComfortFit Ear Contour
- Soft HD Transparent Lace

SWIRL 101 26"



SWIRL 102 28"



SWIRL 103 22"



COLOR SHOWN : FROSTED ASH BLONDE, DR2/HONEY BROWN, SPICED COGNAC (LEFT TO RIGHT)

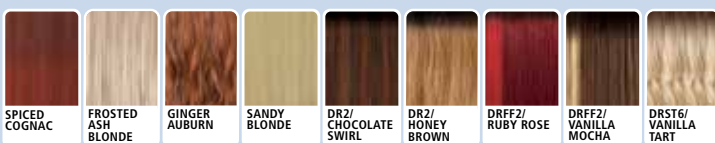


COLOR SHOWN : DRST6/VANILLA TART, DR2/CHOCOLATE SWIRL, GINGER AUBURN (LEFT TO RIGHT)

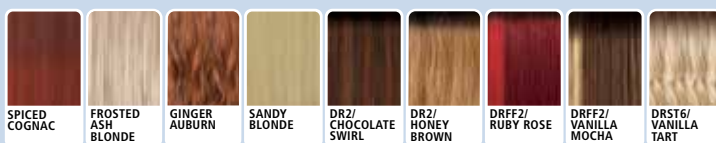


COLOR SHOWN : DR2/VANILLA COCOA, 1B, DR GINGER TOFFEE (LEFT TO RIGHT)

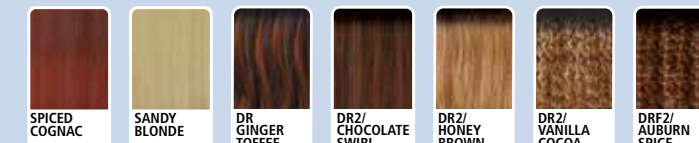
AVAILABLE COLORS
1, 1B, 2, SPICED COGNAC, FROSTED ASH BLONDE, GINGER AUBURN, SANDY BLONDE, DR2/CHOCOLATE SWIRL, DR2/HONEY BROWN, DRFF2/RUBY ROSE, DRFF2/VANILLA MOCHA, DRST6/VANILLA TART



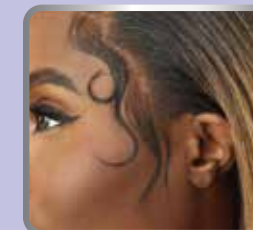
AVAILABLE COLORS
1, 1B, 2, SPICED COGNAC, FROSTED ASH BLONDE, GINGER AUBURN, SANDY BLONDE, DR2/CHOCOLATE SWIRL, DR2/HONEY BROWN, DRFF2/RUBY ROSE, DRFF2/VANILLA MOCHA, DRST6/VANILLA TART



AVAILABLE COLORS
1, 1B, 2, SPICED COGNAC, SANDY BLONDE, DR GINGER TOFFEE, DR2/CHOCOLATE SWIRL, DR2/HONEY BROWN, DR2/VANILLA COCOA, DR2/AUBURN SPICE



DEEPER, WIDER
HAND-TIED
LACE HAIRLINE



5" DEEP
C-SHAPE
PARTING





NEW

Airtied™

HUMAN HAIR BLEND

100% FULLY HAND-TIED WIG

LIGHTWEIGHT REDEFINED.
LACE REDESIGNED.

Airtied pairs gorgeous styles with exclusive features for an airy comfortable wear with its 100% Fully Hand-tied construction and NEW, thinner yet strong lace material.

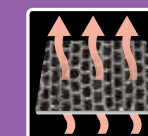
**VANISH
HD+ LACE**



SOFT & THIN MASTERFUL MELT



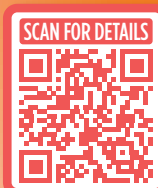
**GLUELESS
ELASTIC BAND**



**BREATHABLE
MESH CAP**



**13"X6"
LACE AREA**



STYLE / COLOR SHOWN:
HHB-SLEEK YAKI 28" DRF CHERRY WINE

STYLE / COLOR SHOWN:
HHB-GLAM WAVES 28" DRF GINGER BROWN

STYLE / COLOR SHOWN:
HHB-DOMINICAN CURLY 22" DR4/TIRAMISU





13" X 4"
FULLY HAND-TIED LACE WIG
COLOR SHOWN : DR4/CALIFORNIA BLONDE



13" X 6"
FULLY HAND-TIED LACE WIG
COLOR SHOWN : DRMC2/GINGER TOFFEE



13" X 6"
FULLY HAND-TIED LACE WIG
COLOR SHOWN : DRFF4/GOLDEN SWIRL



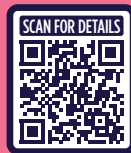
PERFECT HAIRLINE™

Alora features flattering curls on a shoulder-length bob with a versatile 13"x4" lace area.

Romantic curls or sexy waves...side part or half up half down style. It's your pick with Perfect Hairline's 13"x6" Aria and Tamala.

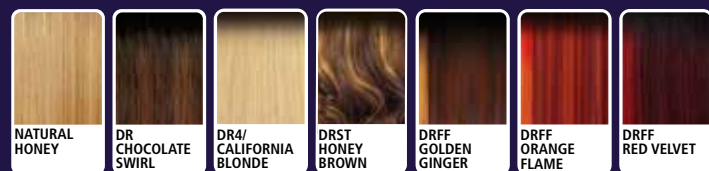
- Fully Hand-Tied 13" x 4" & 13" x 6" Frontal
- Ear-to-Ear Soft HD Transparent Lace
- Natural Baby Hairs
- Comes With Pre-Attached Elastic Band
- Fast, Easy & Effortless Glueless Installs
- Pre-Plucked Hairline
- Heat-Styling Friendly

ALORA 12"

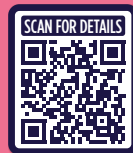


COLOR SHOWN : DRFF GOLDEN GINGER, DRFF ORANGE FLAME, DR4/CALIFORNIA BLONDE (LEFT TO RIGHT)

AVAILABLE COLORS
1, 1B, 2, NATURAL HONEY, DR CHOCOLATE SWIRL, DR4/CALIFORNIA BLONDE, DRST HONEY BROWN, DRFF GOLDEN GINGER, DRFF ORANGE FLAME, DRFF RED VELVET



ARIA 22"



COLOR SHOWN : DRMC4/SMORES DIP, MC DIPPED CHEERY, DRMC2/GINGER TOFFEE (LEFT TO RIGHT)

AVAILABLE COLORS
1, 1B, 2, DR BROWN SUGAR SWIRL, DRST SILVER NOIR, DRST4/VANILLA COCOA MELT, DRFF4/GOLDEN HONEY, DRMC2/GINGER TOFFEE, DRMC4/SMORES DIP, MC DIPPED CHERRY



TAMALA 30"



COLOR SHOWN : DR COPPER BROWN, DR CHERRY CRUSH, DRFF4/GOLDEN SWIRL (LEFT TO RIGHT)

AVAILABLE COLORS
1, 1B, 2, NATURAL HONEY, DR CHERRY CRUSH, DR CHOCOLATE SWIRL, DR COPPER BROWN, DR2/CREAMY TOFFEE, DRFF4/GOLDEN SWIRL





COLOR SHOWN : DRFF ORANGE FLAME



melted HAIRLINE®

LACE FRONT WIG

With Kie's color choices, this chin-length bob can achieve a simple or unexpectedly striking look.

- Soft HD Transparent Lace
- Deluxe Wide Lace Part
- Pre-Plucked Hairline & Sideburns
- Pre-Attached Wide Elastic Band for a Secure Fit
- Fast, Easy & Effortless Glueless Installs
- Redesigned ComfortFit Ear Contour
- Salon-Inspired Colors
- Natural Baby Hairs



COLOR SHOWN : 3DRST APRICOT PLUM



melted HAIRLINE®

LACE FRONT WIG

The key to the perfect style is a phenomenal cut and color, and Kristyn has both.

- Soft HD Transparent Lace
- 5" Deep Parting
- Completely Pre-Plucked Hairline & Sideburns
- Pre-Attached Wide Elastic Band for Secure Fit
- Fast, Easy & Effortless Glueless Installs
- Natural Baby Hairs
- Redesigned ComfortFit Ear Contour
- Heat Resistant Fiber

KIE



COLOR SHOWN : CALIFORNIA BLONDE, DRST HONEY BROWN, DRFF ORANGE FLAME, DRFF ORANGE FLAME (LEFT TO RIGHT)

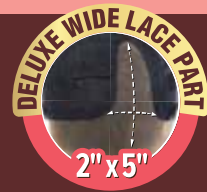
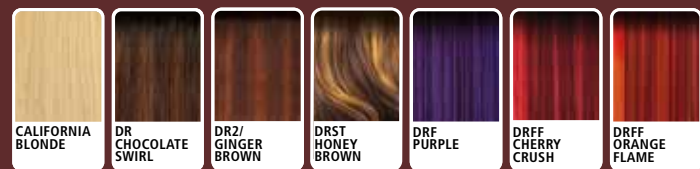
AVAILABLE COLORS
1, 1B, 2, CALIFORNIA BLONDE, DR CHOCOLATE SWIRL, DR2/ GINGER BROWN, DRST HONEY BROWN, DRF PURPLE, DRFF CHERRY CRUSH, DRFF ORANGE FLAME

KRISTYN 22"



COLOR SHOWN : NATURAL HONEY, 3DRST COCOA CREAM, 3DRST APRICOT PLUM, 3DRST APRICOT PLUM (LEFT TO RIGHT)

AVAILABLE COLORS
1, 1B, 2, NATURAL HONEY, RED VELVET, DR CHOCOLATE SWIRL, DR COPPER ORANGE, DR4/CALIFORNIA BLONDE, 3DRST APRICOT PLUM, 3DRST COCOA CREAM





COLOR SHOWN : 3DRST/APRICOT PLUM



COLOR SHOWN : DR4/CALIFORNIA BLONDE



COLOR SHOWN : DRFF2/VANILLA MOCHACCINO



melted HAIRLINE®

LACE FRONT WIG

Austin's gorgeous side-swept bangs and luscious waves come in a variety of special shades.

Rosalia is our new mid-length style with layers and subtle curtain bangs.

Lea's soft ripple waves and perfectly placed highlights will naturally turn heads with its stunning finished look.

- Soft HD Transparent Lace
- 5" Deep Parting
- Completely Pre-Plucked Hairline & Sideburns
- Pre-Attached Wide Elastic Band for Secure Fit
- Fast, Easy & Effortless Glueless Installs
- Natural Baby Hairs
- Redesigned ComfortFit Ear Contour
- Heat Resistant Fiber

AUSTIN 22"



COLOR SHOWN : DRST SMOKEY LILAC, DRFF4/ BUTTERED TOAST, DRFF4/ BUTTERED TOAST (LEFT TO RIGHT)

AVAILABLE COLORS
1, 1B, 2, DR4/CALIFORNIA BLONDE, DRST MAPLE BROWN, DRST SMOKEY LILAC, 3DRST APRICOT PLUM, DRF CHERRY WINE, DRFF GOLDEN GINGER, DRFF4/BUTTERED TOAST

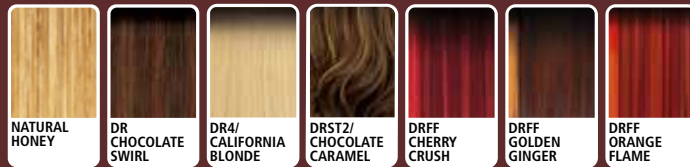


ROSALIA 16"



COLOR SHOWN : DRFF GOLDEN GINGER, DRFF ORANGE FLAME, DR4/CALIFORNIA BLONDE (LEFT TO RIGHT)

AVAILABLE COLORS
1, 1B, 2, NATURAL HONEY, DR CHOCOLATE SWIRL, DR4/CALIFORNIA BLONDE, DRST2/ CHOCOLATE CARAMEL, DRFF CHERRY CRUSH, DRFF GOLDEN GINGER, DRFF ORANGE FLAME

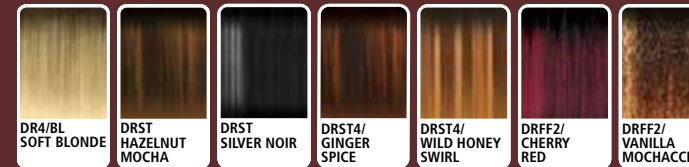


LEA 28"



COLOR SHOWN : DRST SILVER NOIR, DRST4/GINGER SPICE, DRFF2/VANILLA MOCHACCINO (LEFT TO RIGHT)

AVAILABLE COLORS
1, 1B, 2, DR4/BL SOFT BLONDE, DRST HAZELNUT MOCHA, DRST SILVER NOIR, DRST4/GINGER SPICE, DRST4/WILD HONEY SWIRL, DRFF2/CHERRY RED, DRFF2/VANILLA MOCHACCINO





Lace front[®]
LACE FRONT WIG

Eida's shaggy, razor-cut layers and original colors brings a new look to the classic bob.

- Pre-Plucked Lace Parting
- HD Transparent Lace
- Breathable, Comfortable Cap
- Natural Baby Hairs
- Heat Resistant Fiber

COLOR SHOWN : 1B/FF MOONLIT NIGHT



Lace front[®]
LACE FRONT WIG

Zana is more than a short cut. It features a deep, swooped side bangs for a chic, sexy twist.

- Pre-Plucked Lace Parting
- HD Transparent Lace
- Breathable, Comfortable Cap
- Natural Baby Hairs
- Heat Resistant Fiber

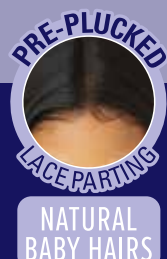
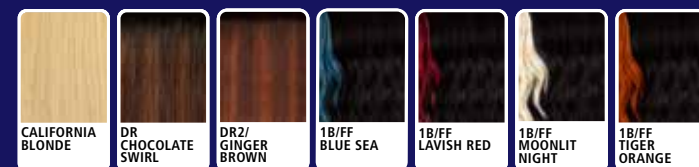
COLOR SHOWN : DRB GINGER SPICE

EIDA 12"



COLOR SHOWN : 1B/FF LAVISH RED, 1B/FF MOONLIT NIGHT, 1B/FF MOONLIT NIGHT (LEFT TO RIGHT)

AVAILABLE COLORS
1, 1B, 2, CALIFORNIA BLONDE, DR CHOCOLATE SWIRL, DR2/GINGER BROWN, 1B/FF BLUE SEA, 1B/FF LAVISH RED, 1B/FF MOONLIT NIGHT, 1B/FF TIGER ORANGE

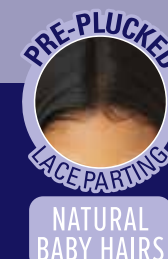


ZANA



COLOR SHOWN : CREAM SODA, CREAM SODA, CREAM SODA (LEFT TO RIGHT)

AVAILABLE COLORS
1, 1B, 2, CHOCOLATE SWIRL, CREAM SODA, RED VELVET, DRB GINGER SPICE, DRB4/HONEY AMBER, DRB4/TIRAMISU, DX MISTY GRAY





COLOR SHOWN : DR GINGER TOFFEE



COLOR SHOWN : DRFF2/RUBY ROSE



COLOR SHOWN : DRFF2/RUBY ROSE

EveryWear™

LACE FRONT WIG

Just in time for big, curly hair season, Every29's bob style is here and available in trending winter colors.

Every30's, face-framing layers with a deep side part creates a sultry look to wear Monday to Sunday!

Everywear 31 has long, gorgeous waves paired with plenty of color options.

- Ear-to-Ear HD Lace
- Easy, Goes-with-Everything Style
- Heat Resistant Fiber

EVERY29 12"



EVERY30 18"

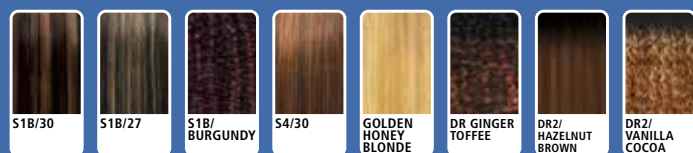


EVERY31 24"



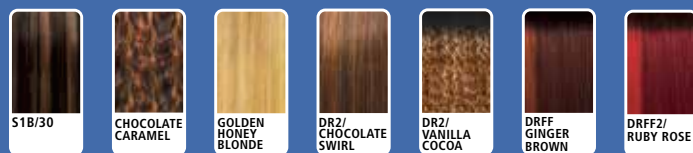
COLOR SHOWN : DR2/ VANILLA COCOA, DR GINGER TOFFEE (LEFT TO RIGHT)

AVAILABLE COLORS
1, 1B, 2, 44, S1B/30, S1B/27, S1B/BURGUNDY, S4/30, GOLDEN HONEY BLONDE,
DR GINGER TOFFEE, DR2/HAZELNUT BROWN, DR2/VANILLA COCOA



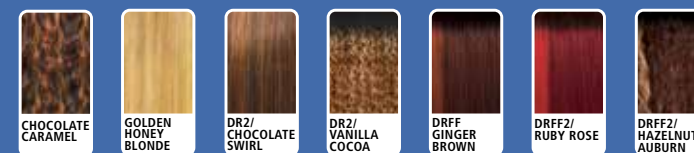
COLOR SHOWN : CHOCOLATE CARAMEL, DRFF2/RUBY ROSE (LEFT TO RIGHT)

AVAILABLE COLORS
1, 1B, 2, S1B/30, CHOCOLATE CARAMEL, GOLDEN HONEY BLONDE, DR2/CHOCOLATE SWIRL,
DR2/VANILLA COCOA, DRFF GINGER BROWN, DRFF2/RUBY ROSE



COLOR SHOWN : DRFF2/HAZELNUT AUBURN, DRFF2/RUBY ROSE (LEFT TO RIGHT)

AVAILABLE COLORS
1, 1B, 2, CHOCOLATE CARAMEL, GOLDEN HONEY BLONDE, DR2/CHOCOLATE SWIRL,
DR2/VANILLA COCOA, DRFF GINGER BROWN, DRFF2/RUBY ROSE, DRFF2/HAZELNUT AUBURN



THE DAILY WIG™
PREMIUM SYNTHETIC FIBERS
LACE PART WIG

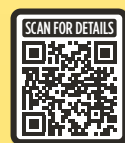
Keep up with the curtain bang trend with Kera! This style comes in chunky highlights, red, pinks and more!

- Premium Synthetic Fibers
- Pre-Plucked & Hand-Tied Lace I-Part
- Breathable Mesh Cap
- Heat-Styling Friendly



COLOR SHOWN : DRFF MOONLIT NIGHT

KERA 20"



AVAILABLE COLORS
1, 1B, CHOCOLATE SWIRL,
TIRAMISU,
DRST HONEY BROWN,
3DR DENIM OMBRE,
DRFF 1B/FUCHSIA,
DRFF GOLDEN GINGER,
DRFF MOONLIT NIGHT,
DRFF RUBY ROSE



COLOR SHOWN : DRFF 1B/FUCHSIA, DRFF GOLDEN GINGER, DRFF MOONLIT NIGHT (LEFT TO RIGHT)



wigpop®

SYNTHETIC FULL WIG



Laina is for the ladies who love special colors coupled with soft, wand curls.

- Easy to Wear, Elevated Looks
- Special Styles:
More Curls, More Textures, More Length
- Ready to Wear & Go
- Heat-Styling Friendly



COLOR SHOWN : UC AUBURN BLONDE

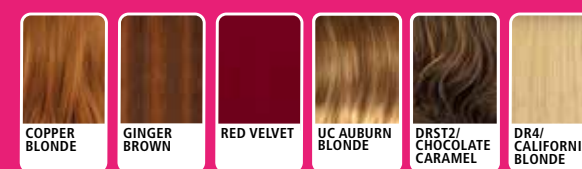
LAINA 18"



AVAILABLE COLORS
1, 1B, 2,
COPPER BLONDE,
GINGER BROWN,
RED VELVET,
UC AUBURN BLONDE,
DRST2/CHOCOLATE CARAMEL,
DR4/CALIFORNIA BLONDE



COLOR SHOWN : COPPER BLONDE, UC AUBURN BLONDE (LEFT TO RIGHT)





Fab & Fly™ GRAY GLAMOUR
100% HUMAN HAIR

HH-Deria features a bumped bob and blunt cut bangs for a mature, classy look.

- 100% Human Hair
- Breathable Mesh Cap
- Comfortable & Secure Fit
- Voluminous & Full
- Easy-to-Wear & Style
- Also Available in Natural Colors
- 100% Unprocessed Human Hair

COLOR SHOWN : 34

HH-DERIA

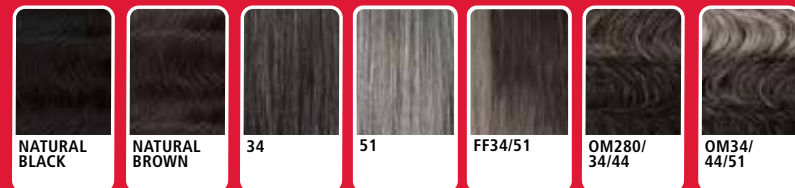


AVAILABLE COLORS

- NATURAL BLACK
- NATURAL BROWN
- 34
- 51
- FF 34/51
- OM280/34/44
- OM34/44/51



COLOR SHOWN : OM34/44/51, 34 (LEFT TO RIGHT)



mylk™

100% REMI HUMAN HAIR



NOURISHMENT YOU CAN FEEL.

MYLK 100% Remi Human Hair in Yaki and Natural Perm with closure blends with ease and creates a natural look that's straight but not too silky.



MYLK YAKI

AVAILABLE COLORS :

- 8" : 1, 1B, 2, 27, 30, 33, 350, 4, 425, 950, BURGUNDY
- 10", 12", 14" : 1, 130S, 1B, 2, 27, 30, 33, 350, 4, 425, 613, 950, BURGUNDY, C1B/30, C1B/33, C4/27, C4/30, T1B/27, T1B/30, T1B/425, T1B/BURGUNDY, T1B/RED
- 16", 18" : 1, 130S, 1B, 2, 27, 30, 33, 350, 4, 425, 613, 950, BURGUNDY
- 20", 22" : 1, 1B, 2, 4

MYLK PERM YAKI

AVAILABLE LENGTHS : 10", 12", 14"

AVAILABLE COLORS : 1, 1B, 2, 4

MYLK CLOSURE

AVAILABLE LENGTHS : 10", 12", 14"

AVAILABLE COLORS : 1, 1B, 2

STYLE & COLOR SHOWN / MYLK YAKI 18" | 1B

mylk™

100% REMI HUMAN HAIR

Remi

Curly

NOURISHMENT YOU CAN FEEL.

Grab coconut milk conditioned curls in a convenient 3pcs pack. It's lush, on-trend, 100% Remi human hair made easy!



COLOR SHOWN : T1B/30

BODY WAVE

AVAILABLE LENGTHS : 10", 12", 14", 18"

AVAILABLE COLORS : 1, 1B, 2, T1B/27, T1B/30, T1B/BU



COLOR SHOWN : T1B/30

BOHEMIAN

AVAILABLE LENGTHS : 10", 12", 14"

AVAILABLE COLORS : 1, 1B, 2, T1B/27, T1B/30, T1B/BU



COLOR SHOWN : T1B/27

LOOSE DEEP

AVAILABLE LENGTHS : 10", 12", 14", 18"

AVAILABLE COLORS : 1, 1B, 2, T1B/27, T1B/30, T1B/BU



COLOR SHOWN : T1B/BU

MODERN DEEP

AVAILABLE LENGTHS : 10", 12", 14", 18"

AVAILABLE COLORS : 1, 1B, 2, T1B/27, T1B/30, T1B/BU



COLOR SHOWN : T1B/27

WATER DEEP

AVAILABLE LENGTHS : 10", 12", 14"

AVAILABLE COLORS : 1, 1B, 2, T1B/27, T1B/30, T1B/BU



COLOR SHOWN : 1B

BOHEMIAN 3PCS

AVAILABLE COLORS : 1, 1B, 2, T1B/27, T1B/30, T1B/BU



COLOR SHOWN : T1B/30

LOOSE DEEP 3PCS

AVAILABLE COLORS : 1, 1B, 2, T1B/27, T1B/30, T1B/BU



COLOR SHOWN : T1B/BU

MODERN DEEP 3PCS

AVAILABLE COLORS : 1, 1B, 2, T1B/27, T1B/30, T1B/BU



COLOR SHOWN : T1B/27

WATER DEEP 3PCS

AVAILABLE COLORS : 1, 1B, 2, T1B/27, T1B/30, T1B/BU

mylk™

100% REMI HUMAN HAIR

Remi



NOURISHMENT YOU CAN FEEL.

Grab coconut milk conditioned curls in a convenient 3pcs pack. It's lush, on-trend, 100% Remi human hair made easy!



purple
pack

Brazilian BUNDLE

100% HUMAN HAIR PREMIUM BLEND

PRE-STRETCHED

Affordable human hair blend bulk in new colors, styles and lengths for Boho Braids, Locs and more!

- 100% Human Hair Premium Blend
- Pre-Stretched & Tangle Free
- Lightweight, Soft on Skin, Itch-Free Wear
- Curling Iron Safe
- Perfect for Boho Styles, Knotless Styles, Goddess Braids and More



NEW COLORS

130S, C1B/30, C1B/350,
C1B/425, C4/27/30,
C950/425/350, DR27,
DR30, DR425,
COPPER ORANGE



AVAILABLE STYLES : DOMINICAN CURL BULK 18" / 24", LOOSE DEEP BULK 18" / 24", NATURAL FRENCH BULK 18" / 24", STRAIGHT BULK 18" / 24"

AVAILABLE COLORS : JET BLACK, NATURAL BLACK, NATURAL, 27, 30, 130S, 425, 950, C1B/30, C1B/350, C1B/425, C4/27/30, C950/425/350, DR27, DR30, DR425, COPPER ORANGE