

FEBRUARY 2023

# Outre®



STYLE & COLOR SHOWN: MYLK YAKI 18" | 1B

**mylk™**

100% REMI HUMAN HAIR










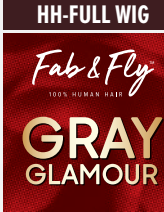



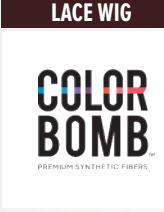

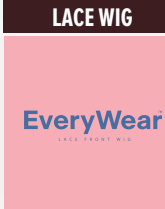
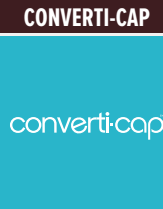
NOURISHED WITH  
COCONUT  
MILK CONDITIONER





# IN THIS ISSUE

Feel the difference with the lushest, softest curls from MYLK. MYLK's curls are designed to achieve the latest styles, and nourished with a rich coconut milk conditioner for a boost of softness and manageability. Made with 100% Remi Human Hair, these luxe strands will surpass your expectations.

<b>BRAID</b> <b>03</b> ORIGINAL BUTTERFLY LOCS 30" 	<b>BRAID</b> <b>04</b> BORABORA LOCS 3X 20", 24", 32", 40" LIL LOOKS BORABORA LOCS 8" 3X 	<b>HH-WEAVE</b> <b>06</b> mylk 100% REMI HUMAN HAIR MYLK CURLY BOHEMIAN 10", 12", 14" BODY WAVE 10", 12", 14", 18" LOOSE DEEP 10", 12", 14", 18" MODERN DEEP 10", 12", 14" WATER DEEP 10", 12", 14" 	<b>HH-WEAVE</b> <b>08</b> mylk 100% REMI HUMAN HAIR MYLK 3PCS BOHEMIAN 3PCS LOOSE DEEP 3PCS MODERN DEEP 3PCS WATERDEEP 3PCS 
<b>HH-WEAVE</b> <b>10</b> purple pack PURPLE PACK YAKI 8", 10", 12", 14", 16", 18", 20", 22", 24", 26", 28", 30" 	<b>HH-WEAVE</b> <b>11</b> purple pack COLOR FANATIC PURPLE PACK COLOR FANATIC 10", 12", 14" 	<b>HH-BLEND WEAVE</b> <b>12</b> purple pack 100% HUMAN HAIR PREMIUM BLEND BRAZILIAN DEEP WAVE 12" MALAYSIAN CURL 12" PERUVIAN CURL 12" 	<b>HH-FULL WIG</b> <b>14</b> Fab & Fly 100% HUMAN HAIR GRAY GLAMOUR HH-DINA 
<b>LACE WIG</b> <b>15</b> PERFECT HAIRLINE 13X6 KEIANA 	<b>LACE WIG</b> <b>16</b> Outre LACE FRONT DELUXE LILIAN 	<b>LACE WIG</b> <b>17</b> melted HAIRLINE MAKEIDA BREENA 	<b>LACE WIG</b> <b>18</b> COLOR BOMB MARINA KIMIA 
<b>LACE WIG</b> <b>20</b> Lace front NATURAL YAKI 18" NATURAL YAKI 26" KAITLIN 	<b>LACE WIG</b> <b>22</b> EveryWear EVERY24 	<b>CONVERTI-CAP</b> <b>23</b> converti-cap W&W - BEACH BEAUTY 	



COLOR SHOWN : BLUE, BABY PINK

Twisted Up®

**BONITA ORIGINAL BUTTERFLY LOCS 30"**

Explore the explosion of new colors of Twisted Up's Original Butterfly Locs 30" style.



## ORIGINAL BUTTERFLY LOCS 30"

AVAILABLE COLORS :  
 1, 1B, 2, 4, 27, 30, 350, 613, 2T1B/27,  
 2T1B/30, MACCHIATO, DRAGON FRUIT,  
 BABY PINK, BLUE, PURPLE, RED

- Premium Synthetic Fiber
- Quick, Long Lasting Protective Style
- Soft Texture & Light Weight
- 100% Handcrafted
- Nonflammable





X-Pression®  
Twisted Up®

# BORABORA LOCS 3X

Get the Borabora Locs trend the fast & easy way with Twisted Up. Available in a variety of lengths and colors.

Kids' trends are made easier with Lil Looks. Get Borabora Locs in pre-cut, kid-friendly lengths!

- Made with 100% Premium Synthetic Fiber
- Quick, Long-Lasting Protective Style
- Easy to Maintain & Manage
- Soft Texture & Lightweight



COLOR SHOWN : OMBRE PURPLE



COLOR SHOWN : OMBRE SILVER

**BORABORA LOCS 32" 3X**

**BORABORA LOCS 20" 3X**

**AVAILABLE COLORS**

BORABORA LOCS 20" 3X, 32" 3X & 40" 3X : 1, 1B, 2, 4, 613, 2T1B/27, 2T1B/30, MACCHIATO, DRAGON FRUIT, 3T OMBRE PRISM, 3T OMBRE BERRY, OMBRE 613, OMBRE PURPLE, OMBRE SILVER

BORABORA LOCS 24" 3X : 1, 1B, 2, 4, 613, 2T1B/27, 2T1B/30, MACCHIATO, DRAGON FRUIT, 3T OMBRE PRISM, 3T OMBRE BERRY, OMBRE 613, OMBRE PURPLE, OMBRE SILVER, BRIGHT RED, DEEP PURPLE, FOREST GREEN, HOT PINK, ROYAL BLUE

BORABORA LOCS 8" 3X : 1, 1B, 2, 4, 2T1B/27, 2T1B/30, MACCHIATO, DRAGON FRUIT



Borabora 20" 3X, Borabora 30" 3X & Lil Looks Borabora 8" 3X



Borabora 24" 3X & Borabora 40" 3X



LIGHTWEIGHT

**SPECIAL COLORS**



NEW COLORS FOR 24" ONLY





COLOR SHOWN : T1B/30

COLOR SHOWN : T1B/27

COLOR SHOWN : T1B/BU

COLOR SHOWN : T1B/27

COLOR SHOWN : T1B/30

## BODY WAVE

## LOOSE DEEP

## MODERN DEEP

## WATER DEEP

## BOHEMIAN

AVAILABLE COLORS  
1, 1B, 2, T1B/27, T1B/30, T1B/BU

AVAILABLE LENGTHS  
MYLK BOHEMIAN, MYLK MODERN DEEP, MYLK WATER DEEP : 10", 12" 14"  
MYLK LOOSE DEEP, MYLK BODY WAVE: 10", 12", 14", 18"

SPECIAL  
COLORS



- Nourished with Coconut Milk Conditioner
- 100% Remi Human Hair
- Variety of Curly Styles
- Smooth, Supple, & Strong

- Healthy Natural Luster
- Multi-Styling Versatility
- Tangle-Free & Shed-Free

# mylk™

100% REMI HUMAN HAIR

Remi

## Curly

NOURISHED WITH  
COCONUT MILK CONDITIONER

Coconut milk conditioner  
and 5 new curly styles come  
together in MYLK's, 100% Remi  
Human Hair line.







COLOR SHOWN : T1B/30

COLOR SHOWN : T1B/BU

COLOR SHOWN : T1B/27

COLOR SHOWN : 1B

### LOOSE DEEP 3PCS

### MODERN DEEP 3PCS

### WATER DEEP 3PCS

### BOHEMIAN 3PCS

# mylk™

100% REMI HUMAN HAIR

Remi



NOURISHED WITH COCONUT MILK CONDITIONER

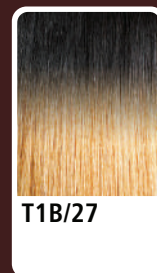
Grab coconut milk conditioned curls in a convenient 3pcs pack. It's lush, on-trend, 100% Remi human hair made easy!



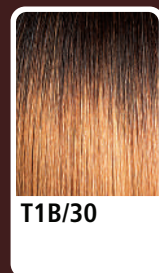
AVAILABLE COLORS

1, 1B, 2, T1B/27, T1B/30, T1B/BU

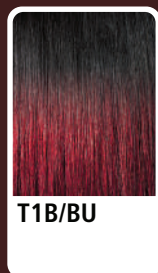
SPECIAL COLORS



T1B/27



T1B/30



T1B/BU

- Nourished with Coconut Milk Conditioner
- 3 Bundles of 100% Remi Human Hair
- Variety of Curly Styles
- Smooth, Supple, & Strong

- Healthy Natural Luster
- Multi-Styling Versatility
- Tangle-Free & Shed-Free









COLOR SHOWN : DR RED VELVET



COLOR SHOWN : DR GINGER BROWN



COLOR SHOWN : DR CHOCOLATE SWIRL



# premium purple pack<sup>®</sup>

3 PCS

100% HUMAN HAIR PREMIUM BLEND

## LONG SERIES

Meet the newest, curly, 100% Human Hair Blend styles from the classic Purple Pack 3pcs Long Series.

- 100% Human Hair Premium Blend
- Longer Version of Purple Pack 3PCS
- Tangle-Free & Shed-Free



### BRAZILIAN DEEP WAVE 12"

### MALAYSIAN CURL 12"

### PERUVIAN CURL 12"

#### AVAILABLE COLORS

1, 1B, 2, DR CHOCOLATE SWIRL, DR GINGER BROWN, DR HONEY BROWN, DR RED VELVET, DR4/GOLDEN HONEY BLONDE



# Fab & Fly™

100% HUMAN HAIR

## GRAY GLAMOUR

HH-Dina is the new chic, curly pixie in a variety of gray colors, designed for easy, everyday wear.



COLOR SHOWN : OM34/44/51 (LEFT), HL34/51 (RIGHT)



### HH-DINA

AVAILABLE COLORS :  
NATURAL BLACK, NATURAL BROWN,  
34, OM280/34/44, OM34/44/51, HL34/51

- Natural Colors:**
- 100% Human Hair
  - Breathable Mesh Cap
  - Comfortable & Secure Fit
  - Voluminous & Full
  - Easy-to-Wear & Style

- Gray Colors:**
- 100% Human Hair
  - Breathable Mesh Cap
  - Comfortable & Secure Fit
  - Voluminous & Full
  - Easy-to-Wear & Style

#### SPECIAL COLORS



\*NATURAL BROWN IS BLEACH & DYE FRIENDLY.



## PERFECT HAIRLINE™

FULLY HAND-TIED 13"X6" LACE WIG

Keiana has it all! Parting versatility, special colors that pop, loose curls that look natural, and the most realistic, perfect hairline.

- Fully Hand-Tied 13" x 6" Frontal
- Ear-to-Ear Soft HD Transparent Lace
- Natural Baby Hairs
- Comes with Pre-Attached Elastic Band
- Pre-Plucked Hairline
- Heat-Styling Friendly



COLOR SHOWN : 3DRFF CAJUN SPICE (TOP), DRFF RED VELVET, DR2/CREAMY TOFFEE (BOTTOM LEFT TO RIGHT)



### KEIANA 13" X 6" 24"

AVAILABLE COLORS :  
1, 1B, 2, DR CHOCOLATE SWIRL, DR2/CREAMY TOFFEE, DR4/GOLDEN HONEY BLONDE,  
DRFF RED VELVET, 3DRFF CAJUN SPICE

#### SPECIAL COLORS





# Outre®

## LACE FRONT DELUXE

PREMIUM SYNTHETIC FIBER

Lilian blends its mid-length bob and voluminous curls with more hand-tie at the top lace area for a seamless hairline.

- Ear-to-Ear HD Transparent Lace
- Deeper Pre-Plucked, Hand-Tied Lace Edges
- 5" Deep Parting
- Natural Baby Hairs
- Heat Resistant



COLOR SHOWN : DR2/CINNAMON SPICE (LEFT), 1B (RIGHT)



LILIAN 16"

AVAILABLE COLORS

- 1, 1B, 2, 613,
- DR RED VELVET,
- DR2/CINNAMON SPICE,
- DR4/BL GOLDEN HONEY,
- DRFF HAZELNUT,
- DRFF CHOCOLATE TRUFFLE



SPECIAL COLORS



COLOR SHOWN : DRFF MIDNIGHT SUNSET



MAKEIDA 34"



COLOR SHOWN : DRFF2/CINNAMON MOCHA



BREENA 10"

AVAILABLE COLORS :

- MAKEIDA:** 1, 1B, 2, 613, DRST HONEY BROWN, DRFF MIDNIGHT SUNSET, DRFF MIDNIGHT RUBY ROSE, DRFF4/VANILLA CARAMEL
- BREENA :** 1, 1B, 2, DR2/CHOCOLATE SWIRL, DR2/GINGER BROWN, DR4/GOLDEN HONEY, DRFF2/CHERRY RED, DRFF2/CINNAMON MOCHA, DRFF2/SUNKISS HONEY

SPECIAL COLORS



# melted HAIRLINE®

LACE FRONT WIG

Makeida and Breena make heads turn with a frontal effect hairline, flattering highlights and two fabulous styles - a bob and a hip-grazing length look!

- Soft HD Transparent Lace
- 5" Deep Parting
- Completely Pre-Plucked Hairline & Sideburns
- Pre-Attached Wide Elastic Band for a Secure Fit
- Natural Baby Hairs
- Redesigned ComfortFit Ear Contour







# COLOR BOMB®

PREMIUM SYNTHETIC FIBERS

Bomb Color, #nofilter

Marina and Kimia feature an unexpected blast of color with underlights in daring, yet wearable shades.

- Exclusive Salon-Inspired Underlights
- Pre-Plucked HD Transparent Lace
- Natural Baby Hair
- Premium Synthetic Fibers
- Selfie-Worthy Styles
- 5" Deep Lace Parting



**MARINA 14"**

COLOR SHOWN  
3DR4/UL FROSTED PASTEL (LEFT)  
DR/UL AQUAMARINE (RIGHT)



- ✓ NATURAL BABY HAIRS
- ✓ PRE-PLUCKED HD LACE



**KIMIA 14"**

COLOR SHOWN  
MC/UL MIDNIGHT PARADISE (TOP)  
DR/UL FAIRY FLOSS (BOTTOM)



- ✓ NATURAL BABY HAIRS
- ✓ PRE-PLUCKED HD LACE



DR/UL FAIRY FLOSS | DR/UL PHOENIX SUN | DR4/UL ORANGE SHERBET | MC/UL MIDNIGHT PARADISE | DR/UL PINK UNICORN | DR/UL PHOENIX SUN | DR/UL PINK UNICORN | 3DR4/UL FROSTED PASTEL | MC/UL ALASKAN NIGHT | DR4/UL ORANGE SHERBET

AVAILABLE COLORS :

1, 1B, 613, DR/UL AQUAMARINE, DR/UL FAIRY FLOSS, DR/UL PHOENIX SUN, DR/UL PINK UNICORN, DR4/UL ORANGE SHERBET, 3DR4/UL FROSTED PASTEL, MC/UL MIDNIGHT PARADISE



AVAILABLE COLORS :

1, 1B, 613, DR/UL FAIRY FLOSS, DR/UL PHOENIX SUN, DR/UL PINK UNICORN, DR4/UL ORANGE SHERBET, 3DR4/UL FROSTED PASTEL, MC/UL ALASKAN NIGHT, MC/UL MIDNIGHT PARADISE





# Lace front<sup>®</sup>

LACE FRONT WIG

Calling all curl lovers! Kaitlin offers a natural part and a curly bob cut that'll complete any look.

Natural Yaki 18" and 26" have a touch of texture and volume for women that want hair that looks and feels like their own.

- Pre-Plucked Lace Parting
- HD Transparent Lace
- Breathable, Comfortable Cap
- Natural Baby Hair
- Heat Resistant Fiber



COLOR SHOWN :  
1 (TOP),  
DRFF GOLDEN AMBER (BOTTOM)



COLOR SHOWN :  
DR2/GOLDEN BALAYAGE (TOP)  
1B (BOTTOM)



COLOR SHOWN :  
DRFF DUTCH COCOA (LEFT)  
1B (RIGHT)



**KAITLIN 14"** PRE-PLUCKED LACE PARTING NATURAL BABY HAIRS

**NATURAL YAKI 18"** PRE-PLUCKED LACE PARTING NATURAL BABY HAIRS

**NATURAL YAKI 26"** PRE-PLUCKED LACE PARTING NATURAL BABY HAIRS

AVAILABLE COLORS

**KAITLIN** : 1, 1B, 2, 613, 99J, CHOCOLATE SWIRL, DR COPPER ORANGE, DR2/GINGER BROWN, DRFF GOLDEN AMBER, DRFF RED VELVET

**NATURAL YAKI 18"** : 1, 1B, 2, 613, DR CHOCOLATE SWIRL, DR COPPER ORANGE, DR2/GOLDEN BALAYAGE, DRFF DUTCH COCOA, DRFF RED PLUM

**NATURAL YAKI 26"** : 1, 1B, 2, 613, DR CHOCOLATE SWIRL, DR COPPER ORANGE, DR2/GOLDEN BALAYAGE, DRFF DUTCH COCOA, DRFF RED PLUM

SPECIAL COLORS





Lace Front  
**EveryWear**<sup>™</sup>  
LACE FRONT WIG

Every24 takes a classic curly look and kicks up the style with gorgeous color options! Wear the shade of your dreams in a unit that's made for everyday life.

- Ear-to-Ear HD Lace
- Easy, Goes-with-Everything Styles
- High Heat Resistant Fiber



COLOR SHOWN :  
DR JAVA FROST (RIGHT)  
DR2/GOLDEN AMBER (LEFT)

**EVERY24 12"**

AVAILABLE COLORS :  
1, 1B, 2, 613, 99J, CHOCOLATE SWIRL, DR JAVA FROST, DR2/CINNAMON WINE, DR2/GINGER BROWN, DR2/GOLDEN AMBER, DR4/GOLDEN HONEY BLONDE

SPECIAL COLORS



**converti-cap**<sup>®</sup>  
PREMIUM SYNTHETIC FIBERS



COLOR SHOWN :  
DR2/CHOCOLATE SWIRL (TOP),  
1B (LEFT), DR2/CHOCOLATE SWIRL (RIGHT)

With Beach Beauty, add 28" of effortless waves to half up, half down styles; swooped bangs; quick, headband looks and more.

- Limitless styling possibilities
- Reveal your own hairline for a realistic look
- Breathable And Flexible Cap That Lays Flat
- Adjustable Drawstring For A Custom Fit
- Premium Synthetic Fibers
- Bacteria-Resistant Cap



**BEACH BEAUTY 28"**

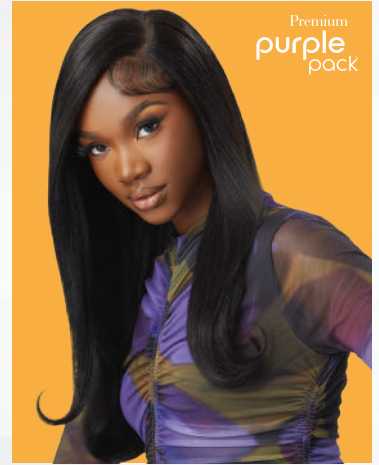


AVAILABLE COLORS  
1, 1B, 2, S1B/30, DR GINGER BROWN, DR HAZELNUT BROWN, DR HONEY BROWN, DR MULLED WINE, DR2/CHOCOLATE SWIRL, DR2/GOLDEN HONEY

SPECIAL COLORS







# Outre®

## 100% HUMAN HAIR YAKI

Say yes to the legendary Outre's human hair yaki line up ranging from Velvet Remi, DuveSSa, Mylk, Gem, Sasha, PNY, Premium New Yaki to Premium Purple Pack, the reliable texture that blends better without compromising quality. Boost your sales with Outre human hair yaki items.

