

FEBRUARY 2024

®

# Outre

STYLE & COLOR SHOWN:  
STRAIGHT | NATURAL (LEFT)  
BOHEMIAN | NATURAL (RIGHT)

Outre  
85 Oxford Drive,  
Moonachie, NJ 07074  
USA

**SWEET STYLES  
STRONG STRANDS**



# IN THIS ISSUE

Wear, wash, and reuse SUGARPUNCH BUNDLES. The smoothest strands are hand-picked and wefted at the root for tangle-free hair that's thick all the way to the ends.

<p><b>BRAID</b> 03</p> <p>SPRINGY AFRO TWIST 16" 3X, 24" 3X</p> <p><b>Twisted Up</b></p> <p>NEW COLORS</p>	<p><b>BRAID</b> 04</p> <p>TROPICAL BOUNCY LOCS 22" 3X WET &amp; WAVY VIBE BOX BRAID 22" BOHO BOX BRAID LOOSE DEEP 28" 3X</p> <p><b>Twisted Up</b></p>	<p><b>HH-WEAVE</b> 06</p> <p><b>Sugar Punch</b></p> <p>100% UNPROCESSED REMY HUMAN HAIR</p>	<p><b>HH-WEAVE</b> 08</p> <p><b>Sugar Punch</b></p> <p>100% UNPROCESSED REMY HUMAN HAIR</p> <p>STRAIGHT, BODY, BOHEMIAN, DEEP, OCEAN, 4"X4" LACE CLOSURE, 13"X4" LACE FRONTAL</p>
<p><b>HH-LACE FRONT WIG</b> 10</p> <p>HH-INEJ HH-SOVANI</p> <p><b>My TRESSES</b></p> <p>100% UNPROCESSED HUMAN HAIR</p> <p>GOLD LABEL</p> <p>Lace Front Wig</p>	<p><b>HH-FULL WIG</b> 12</p> <p>HH-CARTER HH-JILL HH-LUCILLE</p> <p>premium <b>DUBY</b> WIG</p> <p>100% HUMAN HAIR</p>	<p><b>FULLY HAND-TIED WIG</b> 14</p> <p>HHB-LOOSE BODY WAVE 18" HHB-PERM YAKI 26" HHB-NATURAL YAKI 12"</p> <p><b>Airtied</b></p> <p>100% FULLY HAND-TIED WIG</p>	<p><b>LACE FRONTAL WIG</b> 16</p> <p>PERFECT HAIRLINE</p> <p><b>Swoop</b> SERIES</p> <p>SWOOP 1 SWOOP 2 SWOOP 3</p>
<p><b>LACE WIG</b> 18</p> <p>SWIRL 104 SWIRL 105 SWIRL 106</p> <p><b>melted HAIRLINE</b></p> <p><b>SWIRLISTA</b></p> <p>LACE FRONTAL WIG</p>	<p><b>LACE WIG</b> 20</p> <p>ETINA KORAM RUDY</p> <p><b>Sleek Lay Part</b></p>	<p><b>LACE WIG</b> 22</p> <p>IRENA KYALA BRISTOL TALHA</p> <p><b>Lace front</b></p>	<p><b>LACE WIG</b> 24</p> <p>BESS ROSANNA TAVI</p> <p><b>Lace front</b></p>
<p><b>LACE WIG</b> 26</p> <p>EVERY32 EVERY33</p> <p><b>EveryWear</b></p> <p>LACE FRONTAL WIG</p>	<p><b>FULL WIG</b> 28</p> <p>ADLEY</p> <p>wigpop SYNTHETIC FULL WIG</p> <p>Style SELECTS</p>	<p><b>HH-YAKI</b> 29</p> <p>VELVET MYLK GEM PNY SASHA PREMIUM NEW YAKI PREMIUM PURPLE PACK</p> <p><b>OUTRE'S HUMAN HAIR YAKI</b></p>	<p><b>HH-WEAVE</b> 30</p> <p>MYLK CURLY</p> <p><b>mylk</b></p> <p>100% REMY HUMAN HAIR</p>
<p><b>HH-WEAVE</b> 32</p> <p>PURPLE PACK CURLY</p> <p>premium <b>purple pack</b></p> <p>100% HUMAN HAIR</p>	<p><b>HH-WEAVE</b> 34</p> <p>VELVET TARA</p> <p>VELVET REMY</p> <p><b>Tara</b></p>	<p><b>HH-WEAVE</b> 35</p> <p>VELVET DUBY PREMIUM DUBY DUBY EXPRESS</p> <p>VELVET <b>DUBY</b> WIG</p> <p>Outre <b>DUBY</b> X-PRESS</p>	

X-Pression  
**Twisted Up**  
100% PREMIUM SYNTHETIC FIBER

# SPRINGY AFRO TWIST

## NEW COLOR



## APPLE RED



# SPRINGY AFRO TWIST 16" 3X & 24" 3X

**SPRINGY AFRO TWIST 16" 3X:**  
1, 1B, 2, 4, 27, 30, 51, 350, 425, 950, 613, 2T1B/27, 2T1B/30, 2T1B/350, 2T1B/425, 2T1B/BUE, 2T1B/LIME GREEN, 2T1B/PURPLE, 2T4/30, 2T99J/350, APPLE RED, BRIGHT RED, CARNIVAL, CHAMPAGNE AMBER, DEEP BLUE, DEEP PURPLE, HOT PINK, LATTE, LIME GREEN, MERMAID, ORANGE SODA, SHERBERT, SNOW BISCUIT, STRIKE, SUNKISS

**SPRINGY AFRO TWIST 24" 3X:**  
1, 1B, 2, 4, 27, 30, 51, 350, 613, 2T1B/27, 2T1B/30, 2T1B/350, 2T1B/425, 2T1B/BUE, 2T1B/LIME GREEN, 2T1B/PURPLE, 2T4/30, 2T99J/350, APPLE RED, BRIGHT RED, DEEP BLUE, DEEP PURPLE, HOT PINK, LIME GREEN





COLOR SHOWN : MACCHIATO

COLOR SHOWN : 2T1B/350

COLOR SHOWN : CT/435

# X-Pression® Twisted Up®

Cornrow, crochet and go with these curly, wavy, DIY-approved boho braids and locs from Outre's Twisted Up!

- Premium Synthetic Fiber
- Quick, Long Lasting Protective Style
- Soft Texture
- Lightweight
- 100% Handcrafted
- Nonflammable
- Mix and Match with other items in the Twisted Up line

BOHO



## TROPICAL BOUNCY LOCS 22" 3X

## WET & WAVY VIBE BOX BRAID 22"

## BOHO BOX BRAID LOOSE DEEP 28" 3X

AVAILABLE COLORS

1, 1B, 2, 4, 613, 2T1B/27, 2T1B/30, 2T1B/425, MACCHIATO, DRAGON FRUIT



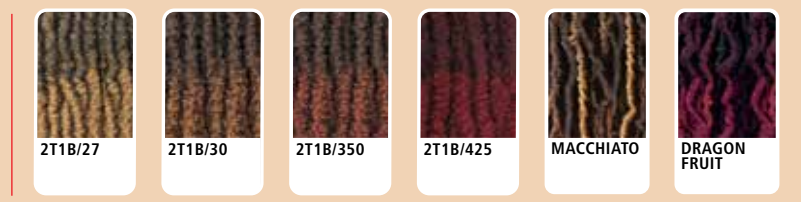
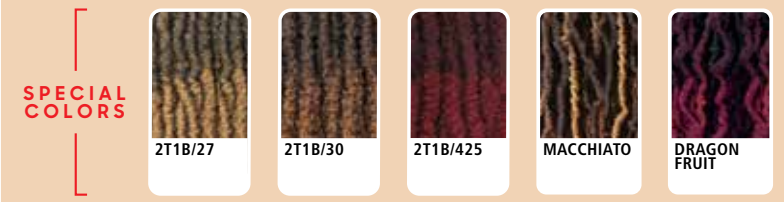
AVAILABLE COLORS

1, 1B, 2, 4, 350, 613, 2T1B/27, 2T1B/30, 2T1B/350, 2T1B/425, MACCHIATO, DRAGON FRUIT

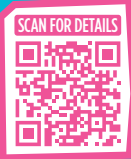


AVAILABLE COLORS

1, 1B, 2, 4, CT/27, CT/30, CT/350, CT/425, CT/MACCHIATO, CT/DRAGON FRUIT







New

# Sugar Punch™

100% UNPROCESSED REMY HUMAN HAIR

Remy

Gorgeous, strong and made to last.

Pair SUGARPUNCH bundles with matching 4"x4" and 13"x4" closures.

SINGLE BUNDLE

LACE CLOSURE  
4"X4", 13"X4"



**DOUBLE DRAWN**  
FOR FULL, THICK ENDS  
Smooth, Resilient STRANDS



STYLE: BOHEMIAN | COLOR SHOWN: NATURAL BLACK



LACE CLOSURE  
4"X4", 13"X4"



**STRAIGHT**  
color shown  
NATURAL

**BODY**  
color shown  
NATURAL BLACK

**OCEAN**  
color shown  
NATURAL

**DEEP**  
color shown  
NATURAL BLACK

**BOHEMIAN**  
color shown  
NATURAL

AVAILABLE LENGTHS : 10" 12" 14" 16" 18" 20" 22" 24"

AVAILABLE COLORS : NATURAL BLACK, NATURAL

AVAILABLE STYLES  
4"X4" : STRAIGHT, BODY, OCEAN, DEEP, BOHEMIAN  
13"X4" : STRAIGHT, BODY

AVAILABLE COLORS  
NATURAL BLACK, NATURAL

AVAILABLE LENGTHS  
10" 12" 14"

# Sugar Punch™

100% UNPROCESSED REMY HUMAN HAIR

## Remy

- 100% Unprocessed Remy Human Hair
- Double Drawn for Thick, Lush Ends
- One Directional Cuticles for Tangle Resistance
- Smooth, Resilient Hair & Long-Lasting Bundles
- Bleach & Dye, Wash & Reuse
- No Shedding



**DOUBLE DRAWN**  
FOR FULL, THICK ENDS  
**Smooth, Resilient STRANDS**



**My**  
TRESSES  
100% UNPROCESSED HUMAN HAIR

GOLD LABEL

*Lace Front Wig*

**9+ QUALITY GRADE BUNDLE HAIR**  
BLEACH / DYE / CUSTOMIZE

Choose HH-Inej for a short, natural 'fro with a naturally hand-tied front hairline.

- 100% Unprocessed Human Hair
- Natural Luster
- HD Transparent Lace
- Bleach / Dye / Customize
- Fuller Density
- 9+ Grade Quality
- Long-Lasting Bundle Hair



COLOR SHOWN : NATURAL BROWN

**My**  
TRESSES  
100% UNPROCESSED HUMAN HAIR

GOLD LABEL

*Lace Front Wig*

**9+ QUALITY GRADE BUNDLE HAIR**  
BLEACH / DYE / CUSTOMIZE

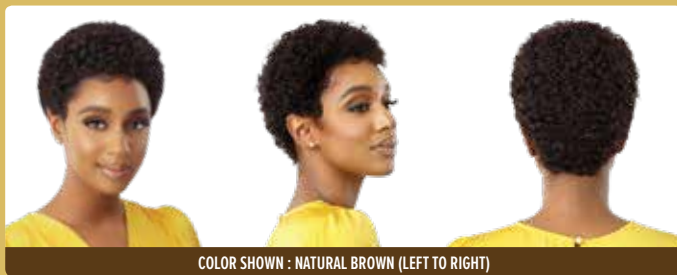
HH-Sovani is a soft, lustrous wavy bob that creates the most elegant, finished style.

- 100% Unprocessed Human Hair
- Natural Luster
- HD Transparent Lace
- Bleach / Dye / Customize
- Fuller Density
- 9+ Grade Quality
- Long-Lasting Bundle Hair



COLOR SHOWN : NATURAL BLACK

HH-INEJ



COLOR SHOWN : NATURAL BROWN (LEFT TO RIGHT)

AVAILABLE COLORS NATURAL BLACK, NATURAL BROWN

HH-SOVANI



COLOR SHOWN : NATURAL BLACK (LEFT TO RIGHT)

AVAILABLE COLORS NATURAL BLACK, NATURAL BROWN





COLOR SHOWN : DR BERRY BURGUNDY



COLOR SHOWN : 33



COLOR SHOWN : DR30

# premium DUBY<sup>®</sup> WIG

100% HUMAN HAIR

HH-Carter, HH-Jill and HH-Lucille are easy-to-wear, short styles with sass!

- 100% Premium Human Hair
- Variety of Classic Styles
- Affordable
- Durable & Long Lasting
- Easy to Style and Maintain
- More Colorful Selections

## HH-CARTER



COLOR SHOWN : DR4 HONEY BLONDE, DR BERRY BURGUNDY (LEFT TO RIGHT)

AVAILABLE COLORS  
1, 1B, DR BERRY BURGUNDY, DR DEEP BLUE, DR DEEP VIOLET, DR HOT RED, DR2/SOFT COPPER, DR4/GOLDEN BRONZE, DR4/HONEY BLONDE



## HH-JILL



COLOR SHOWN : 1B, 33 (LEFT TO RIGHT)

AVAILABLE COLORS  
1, 1B, 2, 27, 33, 425, 51B/30, 54/30, DR30



## HH-LUCILLE



COLOR SHOWN : 1B, DR30 (LEFT TO RIGHT)

AVAILABLE COLORS  
1, 1B, 2, 27, 425, 950, DR30, DR350, 54/30







COLOR SHOWN : DR2/CREAMY TOFFEE

## HHB-LOOSE BODY WAVE 18"



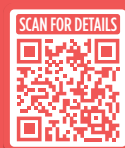
COLOR SHOWN : DRFF CHOCOLATE TOFFEE, DR4/CALIFORNIA BLONDE, DEEP BURGUNDY, DR2/CREAMY TOFFEE (LEFT TO RIGHT)

AVAILABLE COLORS  
1, 1B, 2, DEEP BURGUNDY, GINGER BROWN, NATURAL HONEY, DR2/CREAMY TOFFEE, DR4/CALIFORNIA BLONDE, DRST HONEY BROWN, DRFF CHOCOLATE TOFFEE



COLOR SHOWN : DRF GINGER BROWN

## HHB-PERM YAKI 26"



COLOR SHOWN : DR4/TIRAMISU, DRST MAPLE BROWN, DRF CHERRY WINE, DRF GINGER BROWN (LEFT TO RIGHT)

AVAILABLE COLORS  
1, 1B, 2, DR4/TIRAMISU, DRST2/CHOCOLATE CARAMEL, DRST MAPLE BROWN, DRF CHERRY WINE, DRF GINGER BROWN, DRFF4/GOLDEN SWIRL



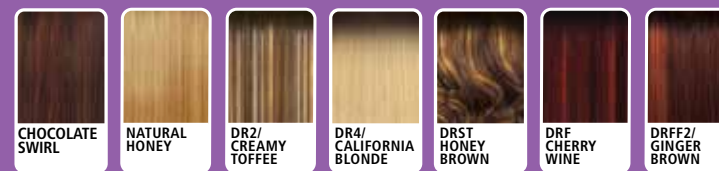
COLOR SHOWN : DR4/CALIFORNIA BLONDE

## HHB-NATURAL YAKI 12"



COLOR SHOWN : DR2/CREAMY TOFFEE, CHOCOLATE SWIRL, DRF CHERRY WINE, DR4/CALIFORNIA BLONDE (LEFT TO RIGHT)

AVAILABLE COLORS  
1, 1B, 2, CHOCOLATE SWIRL, NATURAL HONEY, DR2/CREAMY TOFFEE, DR4/CALIFORNIA BLONDE, DRST HONEY BROWN, DRF CHERRY WINE, DRFF2/GINGER BROWN



# Airtied™

HUMAN HAIR BLEND

100% FULLY HAND-TIED WIG

Get ready for a new way to wear wigs with Airtied. Featuring a ventilated cap for maximum comfort, and a redesigned hairline.

- Human Hair Blend
- 100% Fully Hand-Tied with Vanish HD+ Lace Frontal
- Track-Free, Lightweight & Breathable Mesh Cap
- Thinner & More Flexible for a Seamless Melt
- Pre-Plucked Hairline with Smaller Knots
- Contoured Lace Hairline
- Pre-attached Elastic Band for a Glueless Install

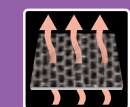


## VANISH HD+ LACE

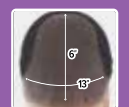
SOFT & THIN MASTERFUL MELT



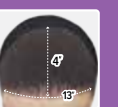
GLUELESS ELASTIC BAND



BREATHABLE MESH CAP



13"X6" LACE AREA



13"X4" LACE AREA





COLOR SHOWN : SWEDISH BLONDE



COLOR SHOWN : BURGUNDY FLAME



COLOR SHOWN : GINGER SPICE

PERFECT HAIRLINE Swoop™ SERIES

LACE FRONTAL WIG

We perfected the NEW Swoop Series to create a flawless hairline and beautiful baby hairs. It is pre-plucked, has more lace space for swooping baby hairs, and includes a curvier hairline shape with a pre-styled volume lift!

PERFECTED HAND-TIED LACE AREA, HAIRLINE & SIDEBURNS

- Fully Hand-Tied 13" x 4" Frontal
- Deeper, Wider, Ear-to-Ear Soft HD Lace
- Pre-Plucked with Precision
- Super Natural Shape and Density

EASY STYLING & SIMPLE INSTALLS

- More HD Lace Space to Swoop your Baby Hairs
- Pre-Styled Volume Lift at Lace Area
- Pre-Attached Wide Elastic Band for Glueless Installs
- Heat-Styling Friendly

SWOOP 1 24"



SWOOP 2 22"



SWOOP 3 26"



COLOR SHOWN : SWISS BROWN, DRFF AMBER SUNSET, SWEDISH BLONDE, SWEDISH BLONDE (LEFT TO RIGHT)



COLOR SHOWN : HAZELNUT HONEY, 1B, BURGUNDY FLAME, BURGUNDY FLAME (LEFT TO RIGHT)

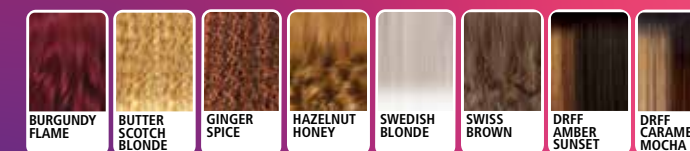
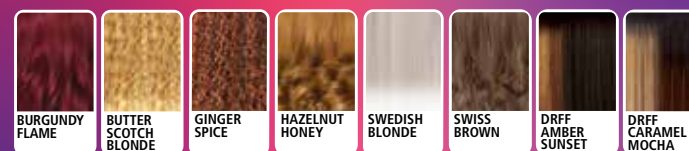
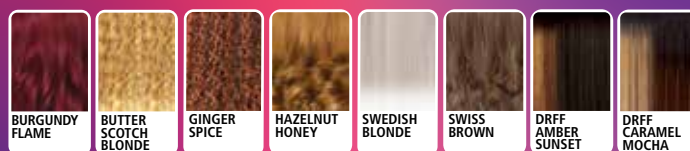


COLOR SHOWN : BUTTERSCOTCH BLONDE, GINGER SPICE, GINGER SPICE, GINGER SPICE (LEFT TO RIGHT)

AVAILABLE COLORS  
1, 1B, 2, BURGUNDY FLAME, BUTTERSCOTCH BLONDE, GINGER SPICE, HAZELNUT HONEY, SWEDISH BLONDE, SWISS BROWN, DRFF AMBER SUNSET, DRFF CARAMEL MOCHA

AVAILABLE COLORS  
1, 1B, 2, BURGUNDY FLAME, BUTTERSCOTCH BLONDE, GINGER SPICE, HAZELNUT HONEY, SWEDISH BLONDE, SWISS BROWN, DRFF AMBER SUNSET, DRFF CARAMEL MOCHA

AVAILABLE COLORS  
1, 1B, 2, BURGUNDY FLAME, BUTTERSCOTCH BLONDE, GINGER SPICE, HAZELNUT HONEY, SWEDISH BLONDE, SWISS BROWN, DRFF AMBER SUNSET, DRFF CARAMEL MOCHA



MORE LACE SPACE FOR SWOOPS

DEEPER, MORE HAND-TIED LACE AREA & BABY HAIRS STYLING SPACE



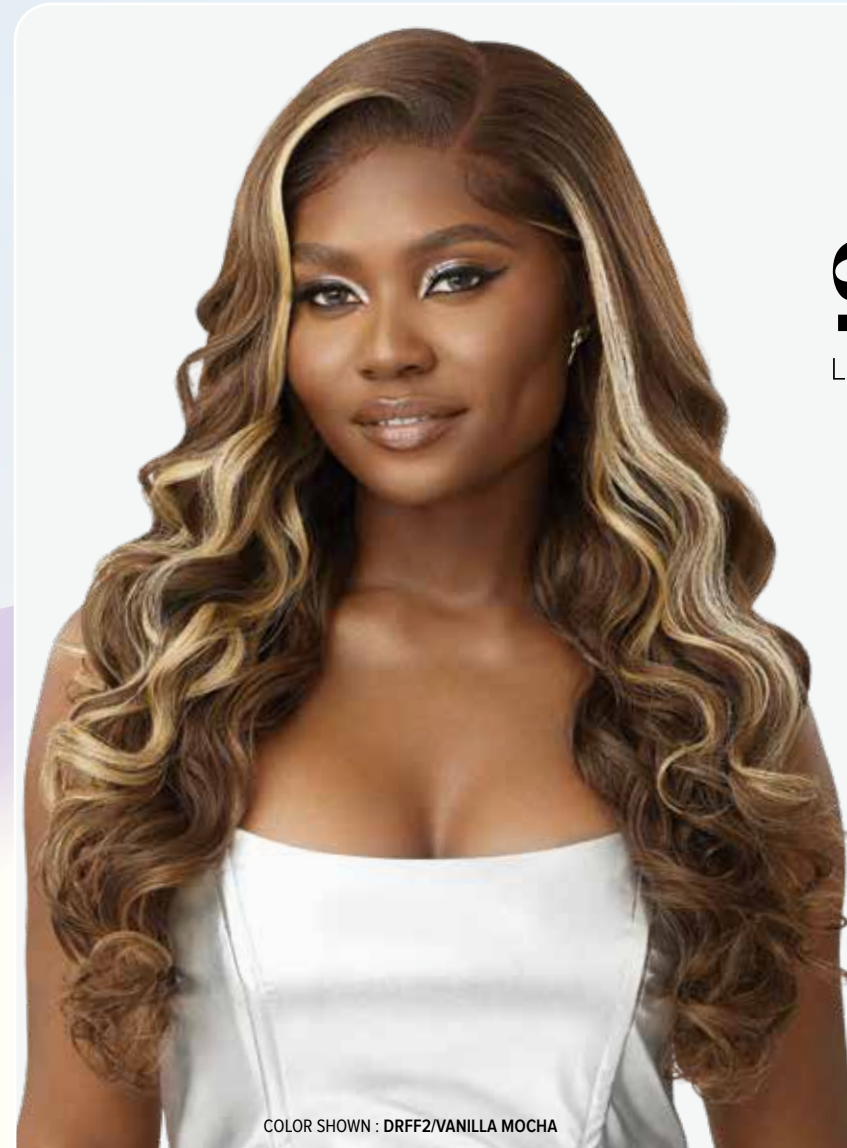




COLOR SHOWN : GOLDEN AMBER



COLOR SHOWN : DRFF2/RUBY ROSE



COLOR SHOWN : DRFF2/VANILLA MOCHA

melted  
HAIRLINE.  
**SWIRLISTA™**  
L A C E F R O N T W I G

New styles available that melts beautifully, with more lace for you to finesse and swirl your baby hairs.

**PERFECTED HAND-TIED LACE PART, HAIRLINE & SIDEBURNS**

- More Space to Finesse your Baby Hairs
- Pre-Plucked with Precision
- Super Natural Shape and Density
- 5" Deep C-Shape Parting

**BEAUTIFUL BLENDING & EASY INSTALLS**

- Pre-Attached Wide Elastic Band for Glueless Installs
- Redesigned ComfortFit Ear Contour
- Soft HD Transparent Lace

**SWIRL 104 20"**



**SWIRL 105 14"**



**SWIRL 106 24"**



COLOR SHOWN : DR2/CHOCOLATE SWIRL, FROSTED ASH BLONDE, GOLDEN AMBER (LEFT TO RIGHT)



COLOR SHOWN : SANDY BLONDE, 1B, SANDY BLONDE (LEFT TO RIGHT)



COLOR SHOWN : DRST6/VANILLA TART, SPICED COGNAC, DRFF2/VANILLA MOCHA (LEFT TO RIGHT)

AVAILABLE COLORS  
1, 1B, 2, FROSTED ASH BLONDE, GOLDEN AMBER, SANDY BLONDE, SPICED COGNAC, DR2/CHOCOLATE SWIRL, DR2/HONEY BROWN, DRFF2/RUBY ROSE, DRFF2/VANILLA MOCHA, DRST6/VANILLA TART



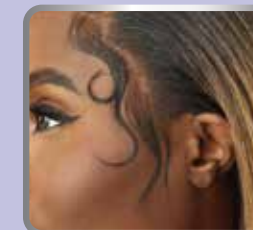
AVAILABLE COLORS  
1, 1B, 2, FROSTED ASH BLONDE, GOLDEN AMBER, SANDY BLONDE, SPICED COGNAC, DR2/CHOCOLATE SWIRL, DR2/HONEY BROWN, DRFF2/RUBY ROSE, DRFF2/VANILLA MOCHA, DRST6/VANILLA TART



AVAILABLE COLORS  
1, 1B, 2, FROSTED ASH BLONDE, GOLDEN AMBER, SANDY BLONDE, SPICED COGNAC, DR2/CHOCOLATE SWIRL, DR2/HONEY BROWN, DRFF2/RUBY ROSE, DRFF2/VANILLA MOCHA, DRST6/VANILLA TART



DEEPER, WIDER  
HAND-TIED  
LACE HAIRLINE



5" DEEP  
C-SHAPE  
PARTING







COLOR SHOWN : 1B/DRFF GRAPE CRUSH



COLOR SHOWN : DR4/CREAM BLONDE

—THE—  
**BLONDE**  
COLLECTION



COLOR SHOWN : DR RED BURGUNDY

# SleekLay<sup>®</sup>

LACE FRONT WIG Part

Nothing's better than bold highlights on Etina's layered bob. Get hip-length tresses in a variety of blondes with Korai. Rudy has the texture and body of a real blowout bob.

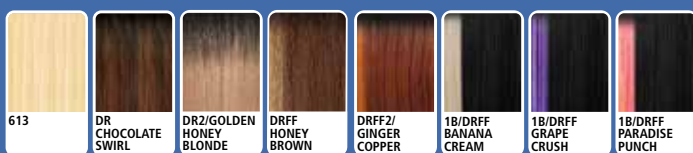
- Wider Hand-Tied Lace Part
- Deep C-Shape Side Parting
- Extra Hand-Tied Lace Edges
- Hump-Less, Laid finish
- Pre-Plucked Hairline
- Natural Baby Hairs
- Pre-Attached Wide Elastic Band for Glueless Installs
- Heat-Friendly

## ETINA 20"



COLOR SHOWN : 1B/DRFF PARADISE PUNCH, 1B/DRFF BANANA CREAM, 1B/DRFF GRAPE CRUSH (LEFT TO RIGHT)

AVAILABLE COLORS  
1, 1B, 2, 613, DR CHOCOLATE SWIRL, DR2/GOLDEN HONEY BLONDE, DRFF HONEY BROWN, DRFF2/GINGER COPPER, 1B/DRFF BANANA CREAM, 1B/DRFF GRAPE CRUSH, 1B/DRFF PARADISE PUNCH

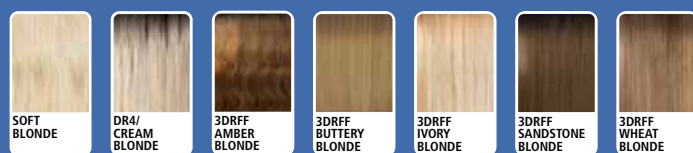


## KORAI 34"



COLOR SHOWN : 3DRFF SANDSTONE BLONDE, DR4/CREAM BLONDE, DR4/CREAM BLONDE (LEFT TO RIGHT)

AVAILABLE COLORS  
1, 1B, 2, SOFT BLONDE, DR4/CREAM BLONDE, 3DRFF AMBER BLONDE, 3DRFF BUTTERY BLONDE, 3DRFF IVORY BLONDE, 3DRFF SANDSTONE BLONDE, 3DRFF WHEAT BLONDE

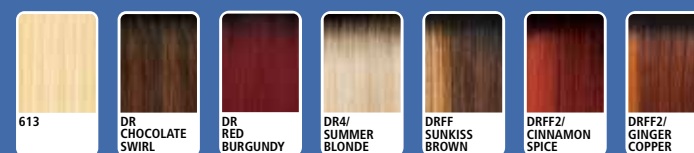


## RUDY 12"



COLOR SHOWN : 1B, DR RED BURGUNDY, DR RED BURGUNDY (LEFT TO RIGHT)

AVAILABLE COLORS  
1, 1B, 2, 613, DR CHOCOLATE SWIRL, DR RED BURGUNDY, DR4/SUMMER BLONDE, DRFF SUNKISS BROWN, DRFF2/CINNAMON SPICE, DRFF2/GINGER COPPER







COLOR SHOWN : CREAM SODA



COLOR SHOWN : BLUE ANGEL



COLOR SHOWN : TIRAMISU



COLOR SHOWN : DR BROWN SUGAR SWIRL



*Lace front*<sup>®</sup>  
LACE FRONT WIG

Get 4 new layered styles: Irena, Kyala, Bristol, and Talha.

- HD Transparent Lace
- Breathable, Comfortable Cap
- Pre-Plucked Lace Parting
- Natural Baby Hairs
- Fast, Easy & Effortless Glueless Installs
- Pre-Attached Wide Elastic Band for a secure fit
- Heat Resistant Fiber

**IRENA 24"**



COLOR SHOWN : FIRE COPPER, CREAM SODA, CREAM SODA (LEFT TO RIGHT)

**KYALA 22"**



COLOR SHOWN : 430/PEEKA 3527, BLUE ANGEL, BLUE ANGEL (LEFT TO RIGHT)

**BRISTOL 26"**



COLOR SHOWN : DRST4/GINGER SPICE, TIRAMISU, TIRAMISU (LEFT TO RIGHT)

**TALHA 24"**



COLOR SHOWN : DRFF2/CHERRY RED, DR BROWN SUGAR SWIRL, DR BROWN SUGAR SWIRL (LEFT TO RIGHT)

AVAILABLE COLORS  
1, 1B, 2, CHOCOLATE SWIRL, COSMO RED, GINGER COPPER, TIRAMISU, DR BROWN SUGAR SWIRL, DRFF2/CHERRY RED, DRFF4/GOLDEN HONEY



AVAILABLE COLORS

- 1, 1B, 2,  
BLUE ANGEL,  
CREAM SODA,  
FIRE COPPER,  
GINGER BROWN,  
PEARLY PINK,  
RED VELVET,  
DRFF4/GOLDEN SWIRL,  
DRST2/CHOCOLATE CARAMEL



AVAILABLE COLORS

- 1, 1B, 2,  
BLUE ANGEL,  
CREAM SODA,  
FIRE COPPER,  
MILK CHOCOLATE,  
PEARLY PINK,  
RED VELVET,  
430/PEEKA 3527,  
DRST HONEY BROWN



AVAILABLE COLORS

- 1, 1B, 2,  
COSMO RED,  
GOLDEN AMBER,  
HAVANA BROWN,  
TIRAMISU,  
DR MULLED WINE,  
DRST SILVER NOIR,  
DRST4/GINGER SPICE



NATURAL BABY HAIRS







COLOR SHOWN : 2/DRS BLONDE TIARA



5" DEEP PARTING

COLOR SHOWN : SOFT GINGER



COLOR SHOWN : COPPER



*Lace front*<sup>®</sup>  
LACE FRONT WIG

Keep it short and sweet with the new Bess bob. It's all about the waves with Rosanna. For the wet & wavy look, nothing tops Tavi.

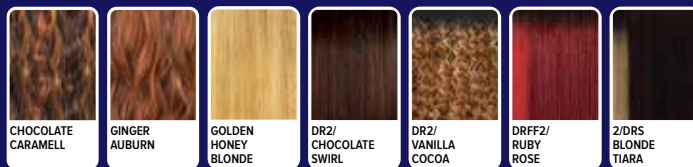
- HD Transparent Lace
- Breathable, Comfortable Cap
- Pre-Plucked Lace Parting
- Natural Baby Hairs
- Fast, Easy & Effortless Glueless Installs
- Pre-Attached Wide Elastic Band for a secure fit
- Heat Resistant Fiber

**BESS 14"**



COLOR SHOWN : GINGER AUBURN, 2/DRS BLONDE TIARA, 2/DRS BLONDE TIARA (LEFT TO RIGHT)

AVAILABLE COLORS  
1, 1B, 2, CHOCOLATE CARAMEL, GINGER AUBURN, GOLDEN HONEY BLONDE, DR2/CHOCOLATE SWIRL, DR2/VANILLA COCOA, DRFF2/RUBY ROSE, 2/DRS BLONDE TIARA

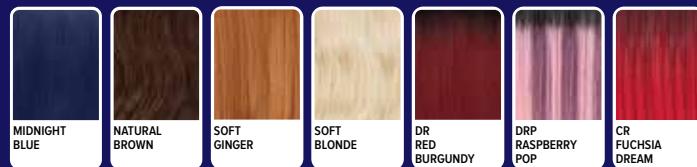


**ROSANNA 26"**



COLOR SHOWN : CR FUCHSIA DREAM, SOFT GINGER, SOFT GINGER (LEFT TO RIGHT)

AVAILABLE COLORS  
1, 1B, 2, MIDNIGHT BLUE, NATURAL BROWN, SOFT GINGER, SOFT BLONDE, DR RED BURGUNDY, DRP RASPBERRY POP, CR FUCHSIA DREAM

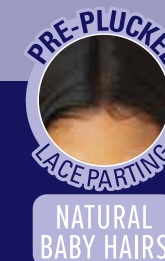
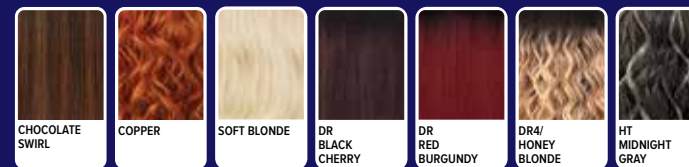


**TAVI 20"**



COLOR SHOWN : 1B, COPPER, COPPER (LEFT TO RIGHT)

AVAILABLE COLORS  
1, 1B, 2, CHOCOLATE SWIRL, COPPER, SOFT BLONDE, DR BLACK CHERRY, DR RED BURGUNDY, DR4/HONEY BLONDE, HT MIDNIGHT GRAY







COLOR SHOWN : ST CHOCOLATE CARAMEL (LEFT), DR DRAGON FRUIT (RIGHT)



COLOR SHOWN : DR4/MUSHROOM BLONDE

# EveryWear™

LACE FRONT WIG

Every32 features tight coils in a cute bob.

Every33 is a captivating style with cascading curls.

- Ear-to-Ear HD Lace
- Budget-Friendly Lace Front Wig
- Easy, Goes-with-Everything Style
- Variety of Colors Available
- High Heat Resistant Fiber

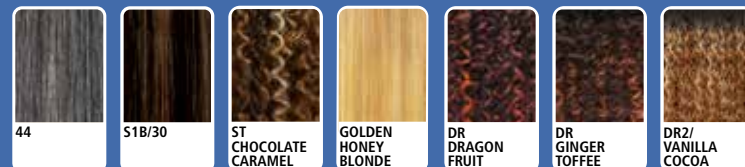


## EVERY32 12"



COLOR SHOWN : DR DRAGON FRUIT, DR DRAGON FRUIT (LEFT TO RIGHT)

AVAILABLE COLORS  
1, 1B, 2, 44, S1B/30, ST CHOCOLATE CARAMEL, GOLDEN HONEY BLONDE,  
DR DRAGON FRUIT, DR GINGER TOFFEE, DR2/VANILLA COCOA

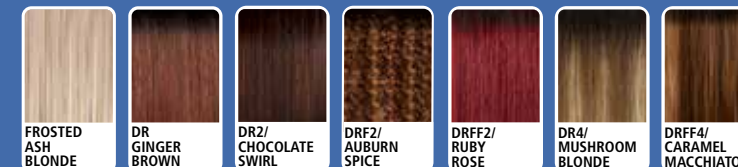


## EVERY33 24"



COLOR SHOWN : 1B, DR4/MUSHROOM BLONDE, DR4/MUSHROOM BLONDE (LEFT TO RIGHT)

AVAILABLE COLORS  
1, 1B, 2, FROSTED ASH BLONDE, DR GINGER BROWN, DR2/CHOCOLATE SWIRL, DRF2/AUBURN SPICE,  
DRFF2/RUBY ROSE, DR4/MUSHROOM BLONDE, DRFF4/CARAMEL MACCHIATO





# wigpop®

**SYNTHETIC FULL WIG**

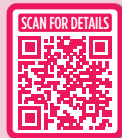
Adley is our NEW style featuring a curly bob cut and bangs.

- Great Value
- Ready to Wear & Go
- Range of Trendy Colors & Styles
- Heat-Styling Friendly



COLOR SHOWN : S1B/30

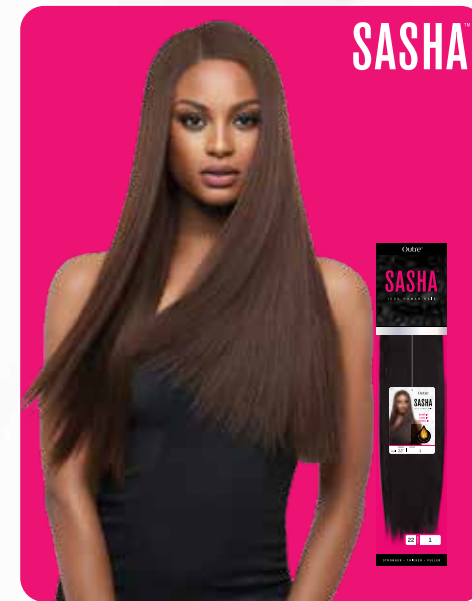
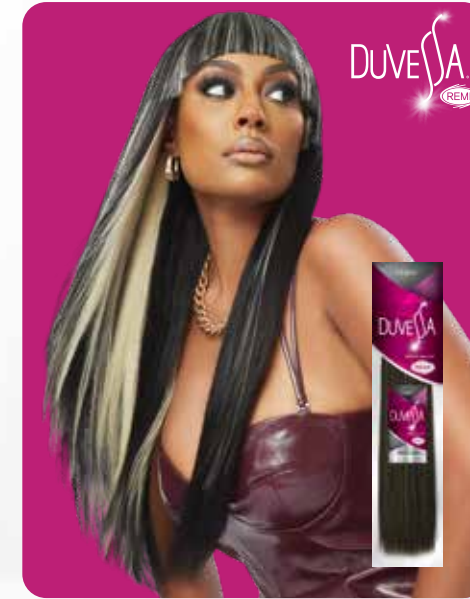
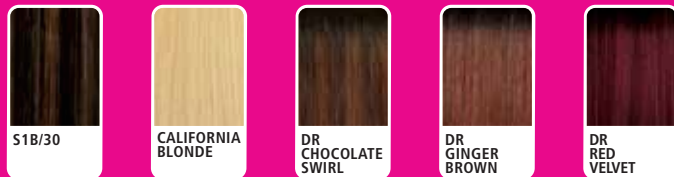
**ADLEY 12"**



AVAILABLE COLORS  
1, 1B, 2,  
S1B/30,  
CALIFORNIA BLONDE,  
DR CHOCOLATE SWIRL,  
DR GINGER BROWN,  
DR RED VELVET



COLOR SHOWN : S1B/30



## HUMAN HAIR YAKI

BEAUTIFUL HAIR FOR ALL.  
EVERY STYLE.  
EVERY BUDGET.

VELVET  
DUVESSA  
MYLK  
GEM  
PREMIUM NEW YAKI  
PNY  
SASHA  
PREMIUM PURPLE PACK





# mylk™

100% REMI HUMAN HAIR

Remi

Curly

## CURLS x COCONUT MILK FEEL THE NOURISHMENT



- Nourished with Coconut Milk
- 100% Remi Human Hair
- Smooth, Supple, Strong
- Healthy Natural Luster
- Tangle Free & Shed Free



COLOR SHOWN : T1B/30

### BODY WAVE

AVAILABLE LENGTHS : 10", 12", 14", 18"  
AVAILABLE COLORS : 1, 1B, 2, T1B/27, T1B/30, T1B/BU



COLOR SHOWN : T1B/30

### BOHEMIAN

AVAILABLE LENGTHS : 10", 12", 14"  
AVAILABLE COLORS : 1, 1B, 2, T1B/27, T1B/30, T1B/BU



COLOR SHOWN : T1B/27

### LOOSE DEEP

AVAILABLE LENGTHS : 10", 12", 14", 18"  
AVAILABLE COLORS : 1, 1B, 2, T1B/27, T1B/30, T1B/BU



COLOR SHOWN : T1B/BU

### MODERN DEEP

AVAILABLE LENGTHS : 10", 12", 14", 18"  
AVAILABLE COLORS : 1, 1B, 2, T1B/27, T1B/30, T1B/BU



COLOR SHOWN : T1B/27

### WATER DEEP

AVAILABLE LENGTHS : 10", 12", 14"  
AVAILABLE COLORS : 1, 1B, 2, T1B/27, T1B/30, T1B/BU





COLOR SHOWN : 1B

## DEEP WAVE

AVAILABLE LENGTHS : 14", 18", 20", 22"

AVAILABLE COLORS :

14", 18" : 1, 1B, 2, 27, 30, 4, 950, C1B/30, C4/30, T1B/27, T1B/30, T1B/BURGUNDY  
20", 22" : 1, 1B, 2, 4



COLOR SHOWN : C1B/30

## FRENCH KISS

AVAILABLE LENGTHS : 10", 12", 14"

AVAILABLE COLORS :

1, 1B, 2, 27, 30, 4, 950, C1B/30, C4/30, T1B/27, T1B/30, T1B/BURGUNDY



COLOR SHOWN : T1B/30

## HAWAIIAN WAVE

AVAILABLE LENGTHS : 10", 12", 14", 18", 20", 22"

AVAILABLE COLORS :

10", 12", 14", 18" : 1, 1B, 2, 27, 30, 4, 950, C1B/30, C4/30, T1B/27, T1B/30, T1B/BURGUNDY  
20", 22" : 1, 1B, 2, 4



COLOR SHOWN : 4+C4/30

## PARIS WAVE

AVAILABLE LENGTHS : 10", 12", 14", 18", 20", 22"

AVAILABLE COLORS :

10", 12", 14", 18" : 1, 1B, 2, 27, 30, 4, 950, C1B/30, C4/30, T1B/27, T1B/30, T1B/BURGUNDY  
20", 22" : 1, 1B, 2, 4



COLOR SHOWN : 1

## PINEAPPLE WAVE

AVAILABLE LENGTHS : 10", 12", 14", 18", 20", 22"

AVAILABLE COLORS :

10", 12", 14", 18" : 1, 1B, 2, 27, 30, 4, 950, C1B/30, C4/30, T1B/27, T1B/30, T1B/BURGUNDY  
20", 22" : 1, 1B, 2, 4



COLOR SHOWN : T1B/BURGUNDY

## WATER WAVE

AVAILABLE LENGTHS : 10", 12", 14"

AVAILABLE COLORS :

1, 1B, 2, 27, 30, 4, 950, C1B/30, C4/30, T1B/27, T1B/30, T1B/BURGUNDY

# premium purple pack®

100% HUMAN HAIR

## PURPLE PACK CURLY

### PURPLE PACK

#### LOW PRICES & QUALITY CURLS

- 100% Human Hair
- Soft to the Touch
- Low Maintenance
- Tangle-Free & Shed-Free





# VELVET<sup>®</sup>

REMI

## Tara

100% REMI HUMAN HAIR

A CHIC CUT IN EVERY BOX.

- 100% Human Hair
- Perfect Choice of Lengths for Cutting-Edge Looks
- Versatility of Multiple Creative Styles
- Single Weft, Thicker Density Hair
- One Pack, One Style



COLOR SHOWN : 4

### VELVET TARA 2-4-6



COLOR SHOWN : 1

COLOR SHOWN : 950

### VELVET TARA 1-2-3

### VELVET TARA 4-6-8

AVAILABLE STYLES & COLORS

**1-2-3** : 1, 1B, 2, 27, 30, 33, 4, 613, 950, BURGUNDY, DEEP BLUE, DEEP VIOLET, F1B/30, F1B/33, F4/30, RED, SILVER GRAY

**2-4-6** : 1, 1B, 2, 27, 30, 33, 4, 613, 950, BURGUNDY, DEEP BLUE, DR27, DR30, DR425, DR613, DEEP VIOLET, 2/30/27, DX280, DX44, DX51, F1B/30, F1B/33, F4/30, RED

**4-6-8** : 1, 1B, 2, 27, 4, 613, 950, BURGUNDY, DEEP BLUE, DR27, DR30, DR425, DR613, DEEP VIOLET, DX280, DX44, DX51, F1B/30, F1B/33, F4/30, RED



LENGTH & COLOR SHOWN : 8" | 950

### VELVET DUBY

AVAILABLE LENGTHS & COLORS

**8"** : 1, 1B, 2, 27, 280, 30, 33, 4, 425, 44, 51, 950, BURGUNDY, C1B/30, C1B/33, C4/27, C4/30, RED, T1B/2730, T1B/27613, T1B/3033, T1B/BURGUNDY, TC3027613, TC43027

**10"** : 1, 1B, 2, 280, 4, 425, 44, 51, 950, BURGUNDY, C1B/30, C4/30, RED



LENGTH & COLOR SHOWN : 8" | 1

### PREMIUM DUBY

AVAILABLE LENGTHS : 8", 10"

AVAILABLE COLORS : 1, 1B, 2, 27, 280, 30, 33, 4, 425, 44, 51, 950, BURGUNDY, C1B/27, C1B/30, C1B/33, C1B/350, C1B/425, C350/425, C4/27, C4/30, DR27, DR30, DR33, DR425, DR613, RED, TC3027613, TC43027



LENGTH & COLOR SHOWN : 8" | 1B + BURGUNDY

### DUBY XPRESS

AVAILABLE LENGTHS & COLORS

**8"** : 1, 1B, 2, 27, 30, 33, 4, 425, 950, BURGUNDY, C1B/30, C1B/33, C4/27, C4/27/30, C4/30, 8/22/144/613, 6/27/144/613, RED, T1B/2730, T1B/27613, T1B/3033, T1B/BURGUNDY, T1B/RED

**10"** : 1, 1B, 2, 27, 30, 33, 4, 425, 950, BURGUNDY, C1B/30, C1B/33, C4/27, C4/27/30, C4/30, 8/22/144/613, 6/27/144/613, RED

**12"** : 1, 1B, 2, 27, 30, 33, 4, 425, 950, BURGUNDY, C1B/30, C1B/33, C27/30/613, C4/27, C4/27/30, C4/30, RED





VELVET  
**Lush**<sup>TM</sup>  
REMY

100% REMY HUMAN HAIR

**BONE STRAIGHT**  
**DOUBLE DRAWN**  
**REUSABLE**



STYLE & COLOR SHOWN : VELVET LUSH | 1