

JANUARY 2024

# Outre®



STYLE & COLOR SHOWN:  
SWOOP 1 | DRFF AMBER SUNSET (LEFT)  
SWOOP 2 | BURGUNDY FLAME (RIGHT)

Outre  
85 Oxford Drive,  
Moonachie, NJ 07074  
USA

## 2024 Swoop Revolution

### Hairline Redefined



## IN THIS ISSUE

We perfected the NEW Swoop Series to create a flawless hairline and beautiful baby hairs. It is pre-plucked for a true human hair finish, has more lace space for swooping baby hairs, and includes a curvier hairline shape with a pre-styled volume lift!

<b>HH-BULK</b>  <b>03</b> PRE-STRETCHED BULK LOOSE DEEP BULK 18"	<b>HH-CLIP-IN</b>  <b>04</b> PURPLE PACK YAKI CLIP-IN 7PCS 18"	<b>BRAID</b>  <b>06</b> TROPICAL BOUNCY LOCS 22" 3X WET & WAVY VIBE BOX BRAID 22" BOHO BOX BRAID LOOSE DEEP 28" 3X	<b>BRAID</b>  <b>08</b> SPRINGY AFRO TWIST 16" 3X, 24" 3X <b>NEW COLORS</b>
<b>BRAID</b>  <b>09</b> PRE-STRETCHED BRAID 42" 3X PRE-STRETCHED BRAID 52" 3X <b>NEW COLORS</b>	<b>LACE FRONTAL WIG</b>  <b>10</b> PERFECT HAIRLINE Swoop SERIES	<b>LACE FRONTAL WIG</b>  <b>12</b> PERFECT HAIRLINE Swoop SERIES SWOOP 1 SWOOP 2 SWOOP 3	<b>LACE WIG</b>  <b>14</b> PERFECT HAIRLINE SIERRA ARIA
<b>FULLY HAND-TIED WIG</b>  <b>16</b> HHB-LOOSE BODY WAVE 18" HHB-PERM YAKI 26" HHB-NATURAL YAKI 12"	<b>LACE WIG</b>  <b>18</b> melted HAIRLINE SWIRLISTA LACE FRONT WIG SWIRL 101 SWIRL 102 SWIRL 103	<b>LACE WIG</b>  <b>20</b> melted HAIRLINE LACE FRONT WIG JOSS CIANA JULIET	<b>LACE WIG</b>  <b>22</b> COLOR BOMB PREMIUM VOLTAGE DYE ALECIA HONOR
<b>LACE WIG</b>  <b>24</b> JENNA BRISTOL TALHA IRENA KYALA ROSANNA	<b>HH-LACE FRONT WIG</b>  <b>28</b> My TRESSES 100% UNPROCESSED HUMAN HAIR GOLD LABEL Lace Front Wig HH-AMITA HH-ARLESSIA HH-NATURAL STRAIGHT 16"	<b>HH-FULL WIG</b>  <b>30</b> HH-JOAN Fab & Fly GRAY GLAMOUR	<b>FULL WIG</b>  <b>31</b> wigpop SYNTHETIC FULL WIG JAI
<b>HH-WEAVE</b>  <b>32</b> VELVET REMI YAKI	<b>HH-WEAVE</b>  <b>33</b> DUVESSA REMI YAKI	<b>HH-WEAVE</b>  <b>34</b> MYLK REMI YAKI	<b>HH-WEAVE</b>  <b>35</b> PURPLE PACK YAKI

**NEW** 18"

**PRE-STRETCHED**  
100% UNPROCESSED HUMAN HAIR BULK

**PRE-STRETCHED**  
100% UNPROCESSED HUMAN HAIR BULK

MyTresses Gold Label has 100% Unprocessed Human Hair in curly, wavy and silky styles to make the latest & trendiest boho looks.

- 100% Unprocessed Human Hair
- 9+ Quality Grade Bundle Hair
- Comfortable, Itch-Free Wear
- Pre-Stretched & Gentle on Fingers
- Soft on Skin & Lightweight
- Dye & Customize

**LOOSE DEEP BULK 18"**

27

30

425

T1B/27

T1B/30

T1B/425

AVAILABLE COLORS :

**NATURAL BLACK, NATURAL, 27, 30, 425, T1B/27, T1B/30, T1B/425**

SCAN FOR DETAILS

JANUARY 2024 | OUTRE.COM 3





premium  
**purple pack**<sup>®</sup>  
 100% HUMAN HAIR

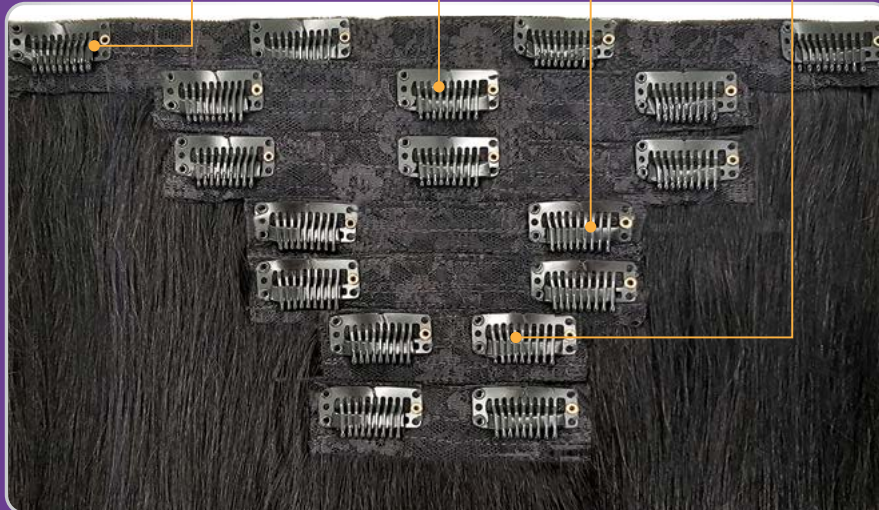
# CLIP-IN 7<sup>PCS</sup>

- 100% Human Hair
- Natural Look & Luster
- Easy to Install, Simple to Remove
- Add Volume & Length Fast
- Tangle-Free & Shed-Free



## LENGTHS & NUMBER OF PIECES

TOTAL <b>7</b> PCS	<b>1</b> PC	<b>2</b> PCS	<b>2</b> PCS	<b>2</b> PCS
	<b>11" WEFT</b>	<b>7" WEFT</b>	<b>4.5" WEFT</b>	<b>3" WEFT</b>



STYLE & COLOR SHOWN : PURPLE PACK YAKI 18" \_1B

premium  
**purple pack**<sup>®</sup>

**100% HUMAN HAIR**

Enhance a look or create a complete transformation with the easy-to-blend, Purple Pack Yaki Clip-ins.



**New**  
**CLIP-IN**  
**7 PCS**

AVAILABLE LENGTH :  
 18"

AVAILABLE COLORS :  
 1, 1B, 2, 613, 950, T1B/27,  
 T1B/30, T1B/425, C1B/30,  
 C1B/425, C27/613, C4/30,  
 C4/27/30





COLOR SHOWN : MACCHIATO

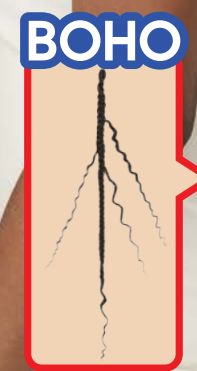
COLOR SHOWN : 2T1B/350

COLOR SHOWN : CT/435

# X-Pression® Twisted Up®

Cornrow, crochet and go with these curly, wavy, DIY-approved boho braids and locs from Outre's Twisted Up!

- Premium Synthetic Fiber
- Quick, Long Lasting Protective Style
- Soft Texture
- Lightweight
- 100% Handcrafted
- Nonflammable
- Mix and Match with other items in the Twisted Up line



## TROPICAL BOUNCY LOCS 22" 3X

## WET & WAVY VIBE BOX BRAID 22"

## BOHO BOX BRAID LOOSE DEEP 28" 3X

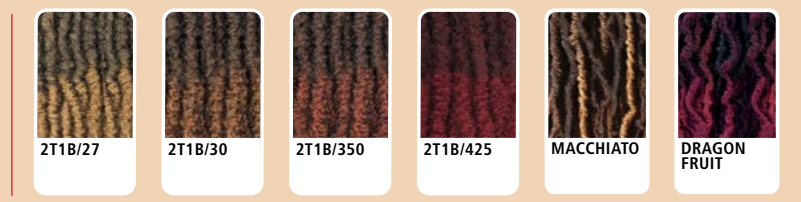
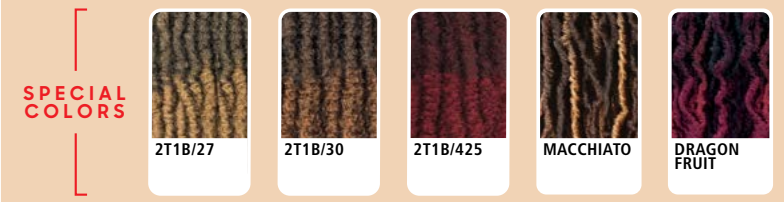
AVAILABLE COLORS  
1, 1B, 2, 4, 613, 2T1B/27, 2T1B/30, 2T1B/425, MACCHIATO, DRAGON FRUIT



AVAILABLE COLORS  
1, 1B, 2, 4, 350, 613, 2T1B/27, 2T1B/30, 2T1B/350, 2T1B/425, MACCHIATO, DRAGON FRUIT



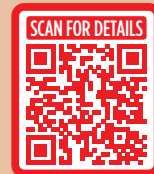
AVAILABLE COLORS  
1, 1B, 2, 4, CT/27, CT/30, CT/350, CT/425, CT/MACCHIATO, CT/DRAGON FRUIT





X-Pression  
**Twisted Up**  
100% PREMIUM SYNTHETIC FIBER

# SPRINGY AFRO TWIST



## NEW COLOR



APPLE RED

## SPRINGY AFRO TWIST 16" 3X & 24" 3X

### SPRINGY AFRO TWIST 16" 3X:

1, 1B, 2, 4, 27, 30, 350, 425, 950, 51, 613, 2T1B/27, 2T1B/30, 2T1B/350, 2T1B/425, 2T1B/BURGUNDY, 2T1B/LIME GREEN, 2T1B/PURPLE, 2T4/30, 2T99J/350, APPLE RED, BRIGHT RED, CARNIVAL, CHAMPAGNE AMBER, DEEP BLUE, DEEP PURPLE, HOT PINK, LATTE, LIME GREEN, MERMAID, ORANGE SODA, SHERBERT, SNOW BISCUIT, STRIKE, SUNKISS

### SPRINGY AFRO TWIST 24" 3X:

1, 1B, 2, 4, 27, 30, 51, 350, 613, 2T1B/27, 2T1B/30, 2T1B/350, 2T1B/425, 2T1B/BURGUNDY, 2T1B/LIME GREEN, 2T1B/PURPLE, 2T4/30, 2T99J/350, APPLE RED, BRIGHT RED, DEEP BLUE, DEEP PURPLE, HOT PINK, LIME GREEN

## NEW COLORS

42" 52"

# X-Pression

## PRE-STRETCHED



No matter the style, Springy Afro Twist and X-Pression's Pre-Stretched Braid have the perfect color and length options to create it all!

### FOR XPRESSION PRE-STRETCHED BRAID

- Made with 100% Kanekalon
- Soft on Skin & Ultra Lightweight
- Matches Kinky and Curly Hair
- Creates Faux Locs, Twists, Ponytails, Crochet Braids and More
- Pre-Separated & Pre-Fluffed for Easy Installation

### FOR TWISTED UP SPRINGY AFRO TWIST

- Pre-Stretched & Pre-Layered
- Quickest Install
- Easy to Braid
- Easy to Manage
- Ultra Lightweight
- Hot Water Set Friendly
- Tangle-Free



## PRE-STRETCHED BRAID 42" 3X, 52" 3X

### PRE-STRETCHED BRAID 42" 3X:

1, 130S, 1B, 2, 27, 30, 33, 34, 425, 44, 51, 60, 280, 613, 613A, 99J, 2T1B/130S, 2T1B/27, 2T1B/2730, 2T1B/27613, 2T1B/30, 2T1B/33, 2T1B/350, 2T1B/60, 2T1B/BURGUNDY, 2T1B/FORSYTHIA, 2T1B/INDIGO, 2T1B/LUXE BLUE, 2T1B/MINT VIBES, 2T1B/OLIVE, 2T1B/SHOCKING PINK, AMBER, APPLE RED, BLUE, BURGUNDY, DRAGON FRUIT, FORSYTHIA, INDIGO, LUXE BLUE, MINT VIBES, OLIVE, PURPLE, SHOCKING PINK, VIOLET, M1B/30, M1B/350, M1B/425, M4/30, M4/27/30, M4/27/613, M4/27/30/613, M27/613, M27/30/613, M27/30, M950/425/350/130S

### PRE-STRETCHED BRAID 52" 3X:

1, 1B, 2, 4, 27, 30, 33, 34, 44, 51, 60, 99J, 130S, 280, 350, 425, 613, 613A, AMBER, APPLE RED, BLUE, BLUE RASPBERRY, BRIGHT RED, BURGUNDY, DRAGON FRUIT, FORSYTHIA, GLOW NEON HOTPINK, GLOW NEON LEMON YELLOW, GLOW NEON ORANGE, GLOW NEON PUMPKIN, GREEN SHAKE, HOT PINK, INDIGO, LUXE BLUE, MINT VIBES, MOODY SKY BLUE, OLIVE, PARTY PUNCH, PUMPKIN SPICE, PURPLE, PURPLE RAIN, RASTA, ROSE GOLD, SHOCKING PINK, SKY BREEZY, SILVER GRAY, SMOKEY LILAC, SUN FLOWER, SWEDISH BLONDE, UNICORN, VIOLET, 2T1B/130S, 2T1B/27, 2T1B/2730, 2T1B/27613, 2T1B/30, 2T1B/33, 2T1B/350, 2T1B/60, 2T1B/BURGUNDY, 2T1B/FORSYTHIA, 2T1B/INDIGO, 2T1B/LUXE BLUE, 2T1B/MINT VIBES, 2T1B/OLIVE, 2T1B/PURPLE, 2T1B/ROSE GOLD, 2T1B/SHOCKING PINK, 2T1B/SILVER GRAY, M1B/30, M1B/350, M1B/425, M4/30, M4/27/30, M4/27/613, M4/27/30/613, M27/613, M27/30/613, M27/30, M950/425/350/130S





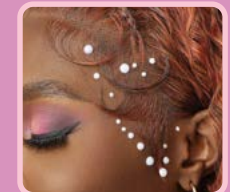
*New*  
PERFECT  
HAIRLINE  
*Swoop*<sup>TM</sup>  
SERIES  
LACE FRONTAL WIG

## SLICK SWOOP DEFINE

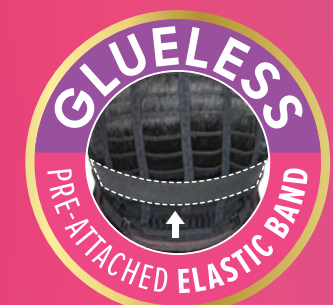
Design and define your baby hairs with the NEW Perfect Hairline - Swoop Series! Packed with new and reimagined features, this hairline doesn't need a filter to look phenomenal.



MORE  
LACE SPACE  
FOR SWOOPS



DEEPER, MORE  
HAND-TIED  
LACE AREA &  
BABY HAIRS STYLING SPACE



STYLE / COLOR SHOWN:  
SWOOP 2 / BURGUNDY FLAME (LEFT)  
SWOOP 1 / DREFF AMBER SUNSET (RIGHT)





COLOR SHOWN : SWEDISH BLONDE



COLOR SHOWN : BURGUNDY FLAME



COLOR SHOWN : GINGER SPICE

PERFECT HAIRLINE  
*Swoop*<sup>™</sup>  
SERIES  
LACE FRONTAL WIG

PERFECTED HAND-TIED LACE PART, HAIRLINE & SIDEBURNS

- Fully Hand-Tied 13" x 4" Frontal
- Deeper, Wider, Ear-to-Ear Soft HD Lace
- Pre-Plucked with Precision
- Super Natural Shape and Density

EASY STYLING & SIMPLE INSTALLS

- More HD Lace Space to Finesse your Baby Hairs
- Pre-Styled Volume Lift at Lace Area
- Pre-Attached Wide Elastic Band for Glueless Installs
- Heat-Styling Friendly

SWOOP 1 24"



SWOOP 2 22"



SWOOP 3 26"



COLOR SHOWN : SWISS BROWN, DRFF AMBER SUNSET, SWEDISH BLONDE (LEFT TO RIGHT)



COLOR SHOWN : HAZELNUT HONEY, 1B, BURGUNDY FLAME (LEFT TO RIGHT)

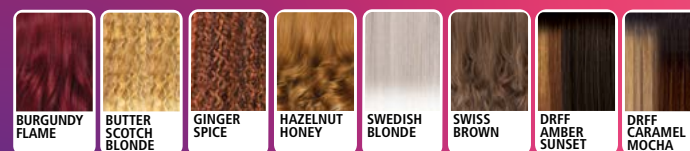
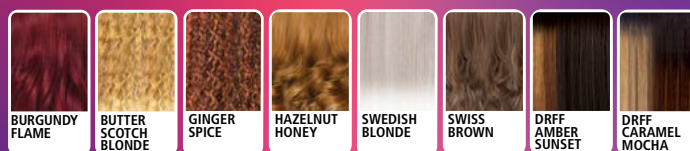
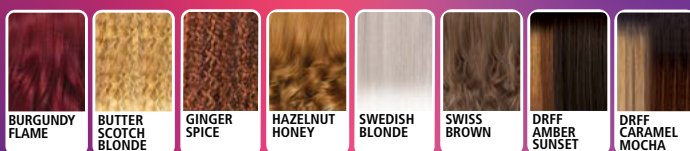


COLOR SHOWN : BUTTERSCOTCH BLONDE, GINGER SPICE (LEFT TO RIGHT)

AVAILABLE COLORS  
1, 1B, 2, BURGUNDY FLAME, BUTTERSCOTCH BLONDE, GINGER SPICE, HAZELNUT HONEY, SWEDISH BLONDE, SWISS BROWN, DRFF AMBER SUNSET, DRFF CARAMEL MOCHA

AVAILABLE COLORS  
1, 1B, 2, BURGUNDY FLAME, BUTTERSCOTCH BLONDE, GINGER SPICE, HAZELNUT HONEY, SWEDISH BLONDE, SWISS BROWN, DRFF AMBER SUNSET, DRFF CARAMEL MOCHA

AVAILABLE COLORS  
1, 1B, 2, BURGUNDY FLAME, BUTTERSCOTCH BLONDE, GINGER SPICE, HAZELNUT HONEY, SWEDISH BLONDE, SWISS BROWN, DRFF AMBER SUNSET, DRFF CARAMEL MOCHA



MORE LACE SPACE FOR SWOOPS

DEEPER, MORE HAND-TIED LACE AREA & BABY HAIRS STYLING SPACE

13" x 4" LACE FRONTAL

HD TRANSPARENT LACE

GLUELESS PRE-ATTACHED ELASTIC BAND





COLOR SHOWN : SPICY RED (LEFT), DRFF CARAMEL MOCHA (RIGHT)



COLOR SHOWN : DRMC2/GINGER TOFFEE



# PERFECT HAIRLINE™

FULLY HAND-TIED 13"X6" LACE WIG

Sierra's layers are naturally swooped away from the face for an on-trend, sexy look.

Aria's bouncy curls have the perfect soft texture for a beautiful, full look.

- Fully Hand-Tied 13" x 6" Frontal
- Ear-to-Ear Soft HD Transparent Lace
- Natural Baby Hairs
- Comes With Pre-Attached Elastic Band
- Fast, Easy & Effortless Glueless Installs
- Pre-Plucked Hairline
- Heat-Styling Friendly

13" X 6"

SIERRA 24"



ARIA 22"



13" X 6"



COLOR SHOWN : DR4/SANDY BLONDE , DRFF CARAMEL MOCHA (LEFT TO RIGHT)

AVAILABLE COLORS  
1, 1B, 2, SPICY RED, DR2/GINGER COPPER, DR4/SANDY BLONDE, DRFF AMBER SUNSET, DRFF CARAMEL MOCHA, DRFF4/GOLDEN HONEY



COLOR SHOWN : DRMC4/SMORES DIP, MC DIPPED CHERRY, DRMC2/GINGER TOFFEE (LEFT TO RIGHT)

AVAILABLE COLORS  
1, 1B, 2, DR BROWN SUGAR SWIRL, DRST SILVER NOIR, DRST4/VANILLA COCOA MELT, DRFF4/GOLDEN HONEY, DRMC2/GINGER TOFFEE, DRMC4/SMORES DIP, MC DIPPED CHERRY







COLOR SHOWN : DR2/CREAMY TOFFEE



COLOR SHOWN : DRF GINGER BROWN



COLOR SHOWN : DR4/CALIFORNIA BLONDE

# Airtied™

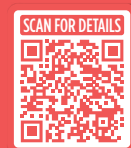
HUMAN HAIR BLEND

100% FULLY HAND-TIED WIG

Various yaki textures and a body wave style are paired with Airtied's comfortable, lightweight, track-free design!

- Human Hair Blend
- 100% Fully Hand-Tied with Vanish HD+ Lace Frontal
- Track-Free, Lightweight & Breathable Mesh Cap
- Thinner & More Flexible for a Seamless Melt
- Pre-Plucked Hairline with Smaller Knots
- Contoured Lace Hairline
- Pre-attached Elastic Band for a Glueless Install

## HHB-LOOSE BODY WAVE 18"



COLOR SHOWN : DRFF CHOCOLATE TOFFEE, DR4/CALIFORNIA BLONDE, DEEP BURGUNDY, DR2/CREAMY TOFFEE (LEFT TO RIGHT)

AVAILABLE COLORS  
1, 1B, 2, DEEP BURGUNDY, GINGER BROWN, NATURAL HONEY, DR2/CREAMY TOFFEE, DR4/CALIFORNIA BLONDE, DRST HONEY BROWN, DRFF CHOCOLATE TOFFEE

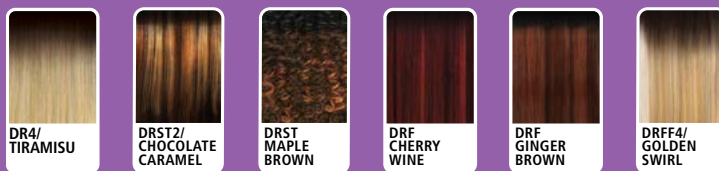


## HHB-PERM YAKI 26"



COLOR SHOWN : DR4/TIRAMISU, DRST2/CHOCOLATE CARAMEL, DRST MAPLE BROWN, DRF CHERRY WINE, DRF GINGER BROWN (LEFT TO RIGHT)

AVAILABLE COLORS  
1, 1B, 2, DR4/TIRAMISU, DRST2/CHOCOLATE CARAMEL, DRST MAPLE BROWN, DRF CHERRY WINE, DRF GINGER BROWN, DRFF4/GOLDEN SWIRL

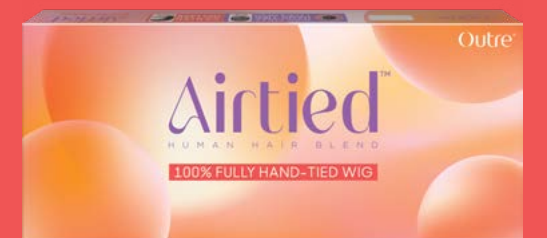
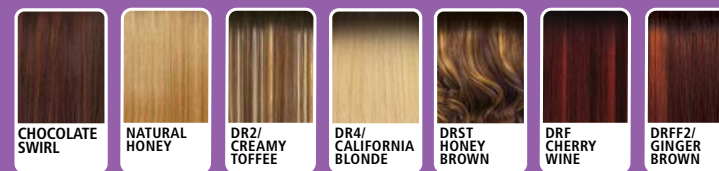


## HHB-NATURAL YAKI 12"



COLOR SHOWN : DR2/CREAMY TOFFEE, CHOCOLATE SWIRL, DRF CHERRY WINE, DR4/CALIFORNIA BLONDE (LEFT TO RIGHT)

AVAILABLE COLORS  
1, 1B, 2, CHOCOLATE SWIRL, NATURAL HONEY, DR2/CREAMY TOFFEE, DR4/CALIFORNIA BLONDE, DRST HONEY BROWN, DRF CHERRY WINE, DRFF2/GINGER BROWN

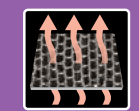


# VANISH HD+ LACE

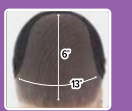
SOFT & THIN MASTERFUL MELT



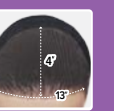
GLUELESS ELASTIC BAND



BREATHABLE MESH CAP



13"X6" LACE AREA



13"X4" LACE AREA





COLOR SHOWN : SPICED COGNAC



COLOR SHOWN : GINGER AUBURN



COLOR SHOWN : DR GINGER TOFFEE

melted HAIRLINE<sup>®</sup>  
**SWIRLISTA™**  
 L A C E F R O N T W I G

Get more lace space to swirl your baby hairs, and achieve an unmatched melt with Melted Hairline's NEW, Swirlista.

**PERFECTED HAND-TIED LACE PART, HAIRLINE & SIDEBURNS**

- More Space to Finesse your Baby Hairs
- Pre-Plucked with Precision
- Super Natural Shape and Density
- 5" Deep C-Shape Parting

**BEAUTIFUL BLENDING & EASY INSTALLS**

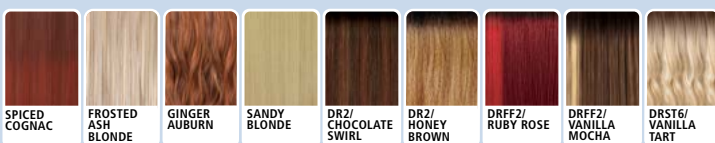
- Pre-Attached Wide Elastic Band for Glueless Installs
- Redesigned ComfortFit Ear Contour
- Soft HD Transparent Lace

**SWIRL 101 26"**



COLOR SHOWN : FROSTED ASH BLONDE, DR2/HONEY BROWN, SPICED COGNAC (LEFT TO RIGHT)

AVAILABLE COLORS  
 1, 1B, 2, SPICED COGNAC, FROSTED ASH BLONDE, GINGER AUBURN, SANDY BLONDE, DR2/CHOCOLATE SWIRL, DR2/HONEY BROWN, DRFF2/RUBY ROSE, DRFF2/VANILLA MOCHA, DRST6/VANILLA TART



**SWIRL 102 28"**



COLOR SHOWN : DRST6/VANILLA TART, DR2/CHOCOLATE SWIRL, GINGER AUBURN (LEFT TO RIGHT)

AVAILABLE COLORS  
 1, 1B, 2, SPICED COGNAC, FROSTED ASH BLONDE, GINGER AUBURN, SANDY BLONDE, DR2/CHOCOLATE SWIRL, DR2/HONEY BROWN, DRFF2/RUBY ROSE, DRFF2/VANILLA MOCHA, DRST6/VANILLA TART

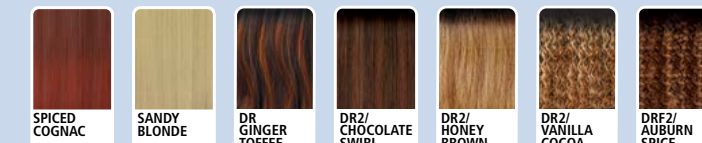


**SWIRL 103 22"**

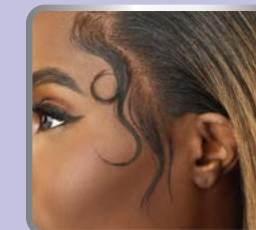


COLOR SHOWN : DR2/VANILLA COCOA, 1B, DR GINGER TOFFEE (LEFT TO RIGHT)

AVAILABLE COLORS  
 1, 1B, 2, SPICED COGNAC, SANDY BLONDE, DR GINGER TOFFEE, DR2/CHOCOLATE SWIRL, DR2/HONEY BROWN, DR2/VANILLA COCOA, DR2/AUBURN SPICE



DEEPER, WIDER  
 HAND-TIED  
 LACE HAIRLINE



5" DEEP  
 C-SHAPE  
 PARTING







COLOR SHOWN : RED VELVET



COLOR SHOWN : GINGER BROWN



COLOR SHOWN : 1B/HONEY KISS



# melted HAIRLINE®

LACE FRONT WIG

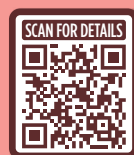
Joss's hip-length, elegant s-shaped waves are made for women with style!

Ciana is perfectly cut and colored with its naturally layered bob in special shades.

Juliet's soft curls in special colors are unforgettable.

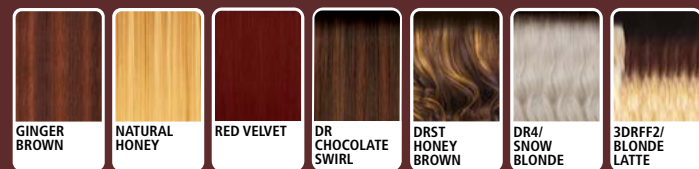
- Soft HD Transparent Lace
- 5" Deep Parting
- Completely Pre-Plucked Hairline & Sideburns
- Pre-Attached Wide Elastic Band for Secure Fit
- Fast, Easy & Effortless Glueless Installs
- Natural Baby Hairs
- Redesigned ComfortFit Ear Contour
- Heat Resistant Fiber

## JOSS 28"

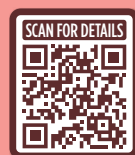


COLOR SHOWN : DR4/SNOW BLONDE, 3DRFF2/BLONDE LATTE, RED VELVET (LEFT TO RIGHT)

AVAILABLE COLORS  
1, 1B, 2, GINGER BROWN, NATURAL HONEY, RED VELVET, DR CHOCOLATE SWIRL, DRST HONEY BROWN, DR4/SNOW BLONDE, 3DRFF2/BLONDE LATTE

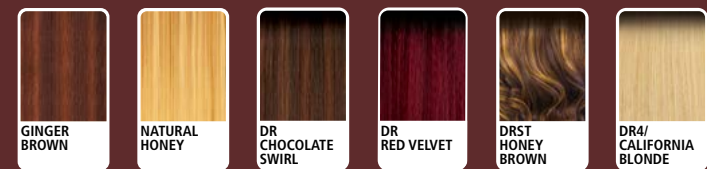


## CIANA 12"

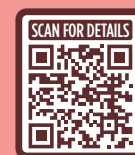


COLOR SHOWN : DR4/CALIFORNIA BLONDE, DR CHOCOLATE SWIRL (LEFT TO RIGHT)

AVAILABLE COLORS  
1, 1B, 2, GINGER BROWN, NATURAL HONEY, DR CHOCOLATE SWIRL, DR RED VELVET, DRST HONEY BROWN, DR4/CALIFORNIA BLONDE



## JULIET 20"



COLOR SHOWN : TIRAMISU, COSMO RED, 1B/HONEY KISS (LEFT TO RIGHT)

AVAILABLE COLORS  
1, 1B, 2, COSMO RED, GOLDEN AMBER, HAVANA BROWN, TIRAMISU, 1B/HONEY KISS, DR2/CHOCOLATE SWIRL, DRST4/GINGER SPICE





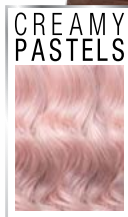


# COLOR BOMB®

PREMIUM SYNTHETIC FIBERS

For a style that pops with salon-inspired solid tone colors, choose Alecia from the Creamy Pastels color collection.

- Exclusive Salon-Inspired Colors
- Pre-Plucked HD Transparent Lace
- Natural Baby Hair
- Pre-Attached Wide Elastic Band for Secure Fit
- Fast, Easy & Effortless Glueless Installs
- Premium Synthetic Fibers
- Selfie-Worthy Styles
- 5" Deep Lace Parting



COLOR SHOWN : ROSY BLONDE



# COLOR BOMB®

PREMIUM SYNTHETIC FIBERS

With bold money piece highlights, all eyes will be on any woman that wears Honor.

- Exclusive Salon-Inspired Colors
- Pre-Plucked HD Transparent Lace
- Natural Baby Hair
- Pre-Attached Wide Elastic Band for Secure Fit
- Fast, Easy & Effortless Glueless Installs
- Premium Synthetic Fibers
- Selfie-Worthy Styles
- 5" Deep Lace Parting



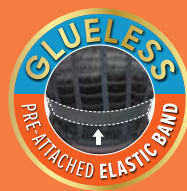
COLOR SHOWN : DRFF 1B/FUCHSIA

## ALECIA 22"



COLOR SHOWN : BLUE ANGEL, FRENCH LILAC, ICE BLONDE, PEACH GOLD, BLUSH BLONDE (LEFT TO RIGHT)

AVAILABLE COLORS  
1,1B, BLUE ANGEL, BLUSH BLONDE, FRENCH LILAC, ICE BLONDE, PEACH GOLD, ROSY BLONDE

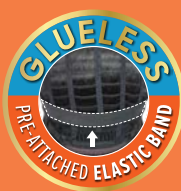


## HONOR 24"



COLOR SHOWN : DRFF 1B/PLATINUM SILVER, DRFF 1B/RICH BURGUNDY, DRFF 1B/ATOMIC BLUE, DRFF 1B/CALIFORNIA BLONDE, DRFF 1B/PURPLE VIOLET (LEFT TO RIGHT)

AVAILABLE COLORS  
DRFF 1B/ATOMIC BLUE, DRFF 1B/CALIFORNIA BLONDE, DRFF 1B/FUCHSIA, DRFF 1B/PLATINUM SILVER, DRFF 1B/PURPLE VIOLET, DRFF 1B/RICH BURGUNDY







COLOR SHOWN : DRFF HAZY BLUE



COLOR SHOWN : TIRAMISU



5" DEEP PARTING

COLOR SHOWN : DR BROWN SUGAR SWIRL



*Lace front*<sup>®</sup>  
LACE FRONT WIG

Jenna's edgy blunt bob comes in classic shades and electric colors!

Bristol features pretty drape bangs and soft barrel curls.

Grab Talha for curtain bangs and glamorous layers.

- HD Transparent Lace
- Breathable, Comfortable Cap
- Natural Baby Hairs
- Fast, Easy & Effortless Glueless Installs
- Pre-Attached Wide Elastic Band for a secure fit
- Heat Resistant Fiber

JENNA 12"



COLOR SHOWN : BLUSH BLONDE, DRFF HAZY BLUE, DRFF HAZY BLUE (LEFT TO RIGHT)

AVAILABLE COLORS

1, 1B, 2, BLUSH BLONDE, RED VELVET, DR CHOCOLATE SWIRL, DRFF BLACK JADE, DRFF BLACK PINK, DRFF HAZY BLUE, DRFF4/COPPER BALAYAGE, DRFF4/ROSE BROWN



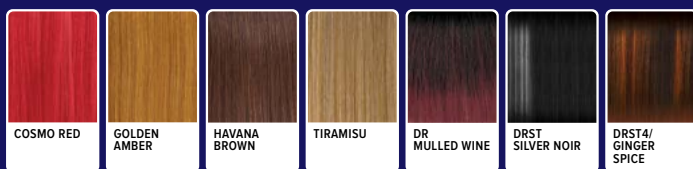
BRISTOL 26"



COLOR SHOWN : DRST4/GINGER SPICE, TIRAMISU, TIRAMISU (LEFT TO RIGHT)

AVAILABLE COLORS

1, 1B, 2, COSMO RED, GOLDEN AMBER, HAVANA BROWN, TIRAMISU, DR MULLED WINE, DRST SILVER NOIR, DRST4/GINGER SPICE



TALHA 24"



COLOR SHOWN : DRFF2/CHERRY RED, DR BROWN SUGAR SWIRL, DR BROWN SUGAR SWIRL (LEFT TO RIGHT)

AVAILABLE COLORS

1, 1B, 2, CHOCOLATE SWIRL, COSMO RED, GINGER COPPER, TIRAMISU, DR BROWN SUGAR SWIRL, DRFF2/CHERRY RED, DRFF4/GOLDEN HONEY



NATURAL BABY HAIRS







COLOR SHOWN : CREAM SODA



COLOR SHOWN : BLUE ANGEL



COLOR SHOWN : SOFT GINGER

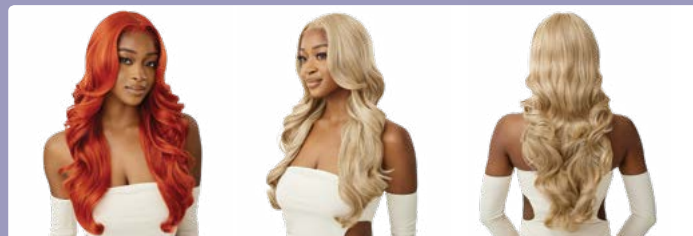


*Lace front*<sup>®</sup>  
LACE FRONT WIG

Irena features a natural density that is paired with endless, flattering layers. Keep it classic or eye-catching with Kyala's color variety. Rosanna's romantic curls will make women feel like a queen.

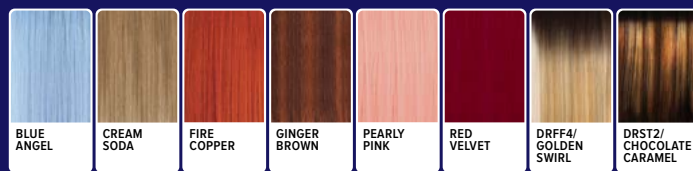
- Pre-Plucked Lace Parting
- HD Transparent Lace
- Breathable, Comfortable Cap
- Natural Baby Hair
- Fast, Easy & Effortless Glueless Installs
- Pre-Attached Wide Elastic Band for a Secure Fit
- Heat Resistant Fiber

**IRENA 24"**



COLOR SHOWN : FIRE COPPER, CREAM SODA, CREAM SODA (LEFT TO RIGHT)

AVAILABLE COLORS  
1, 1B, 2, BLUE ANGEL, CREAM SODA, FIRE COPPER, GINGER BROWN, PEARLY PINK, RED VELVET, DRFF4/GOLDEN SWIRL, DRST2/CHOCOLATE CARAMEL



**KYALA 22"**



COLOR SHOWN : 430/PEEKA 3527, BLUE ANGEL, BLUE ANGEL (LEFT TO RIGHT)

AVAILABLE COLORS  
1, 1B, 2, BLUE ANGEL, CREAM SODA, FIRE COPPER, MILK CHOCOLATE, PEARLY PINK, RED VELVET, 430/PEEKA 3527, DRST HONEY BROWN



**ROSANNA 26"**



COLOR SHOWN : CR FUCHSIA DREAM, SOFT GINGER, SOFT GINGER (LEFT TO RIGHT)

AVAILABLE COLORS  
1, 1B, 2, MIDNIGHT BLUE, NATURAL BROWN, SOFT GINGER, SWEDISH BLONDE, DR RED BURGUNDY, DRP RASPBERRY POP, CR FUCHSIA DREAM



NATURAL BABY HAIRS







COLOR SHOWN : NATURAL BROWN



COLOR SHOWN : NATURAL BROWN



COLOR SHOWN : NATURAL BLACK

My TRESSES  
100% UNPROCESSED HUMAN HAIR

GOLD LABEL

Lace Front Wig

9+ QUALITY GRADE BUNDLE HAIR

BLEACH / DYE / CUSTOMIZE

HH-Amita's mid-length bob is a look that any woman can wear.

HH-Arlessia has natural-looking waves with luscious volume in a beginner-friendly construction!

Get sleek hair the simple way with our new 100% unprocessed human hair, Natural Straight 16" wig.

- 100% Unprocessed Human Hair
- Natural Luster
- HD Transparent Lace
- Bleach / Dye / Customize
- 9+ Grade Quality
- Fuller Density
- Long-Lasting Bundle Hair

HH-AMITA 14"



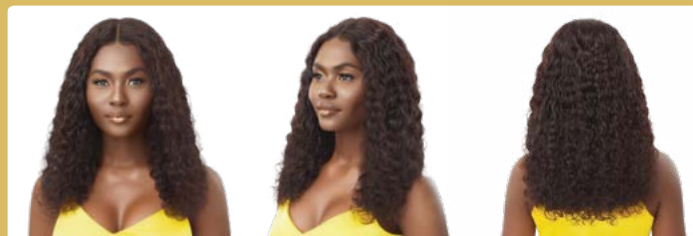
HH-ARLESSIA 20"



HH-NATURAL STRAIGHT 16"



COLOR SHOWN : NATURAL BROWN, NATURAL BROWN, NATURAL BROWN (LEFT TO RIGHT)



COLOR SHOWN : NATURAL BROWN, NATURAL BROWN, NATURAL BROWN (LEFT TO RIGHT)



COLOR SHOWN : NATURAL BLACK, NATURAL BLACK, NATURAL BLACK (LEFT TO RIGHT)

AVAILABLE COLORS  
NATURAL BLACK, NATURAL BROWN

AVAILABLE COLORS  
NATURAL BLACK, NATURAL BROWN

AVAILABLE COLORS  
NATURAL BLACK, NATURAL BROWN





**Fab & Fly**™ **GRAY GLAMOUR**  
100% HUMAN HAIR



COLOR SHOWN : 34

HH-Joan is a tapered pixie available in gorgeous gray tones.

- 100% Human Hair
- Breathable Mesh Cap
- Comfortable & Secure Fit
- Voluminous & Full
- Easy-to-Wear & Style
- Bacteria-Resistant Wig Cap
- Also Available in Natural Colors (100% Unprocessed Human Hair)

**HH-JOAN**



AVAILABLE COLORS

- NATURAL BLACK,  
NATURAL BROWN,  
34,  
HL34/51,  
OM34/44/51,  
OM280/34/44



COLOR SHOWN : OM34/44/51, 34, 34 (LEFT TO RIGHT)



**wigpop**®

**SYNTHETIC FULL WIG**



COLOR SHOWN : 1B

Get a quick & perfect finger coil style every time with Jai!

- Great Value
- Ready to Wear & Go
- Range of Trendy Colors & Styles
- Heat-Styling Friendly

**JAI**

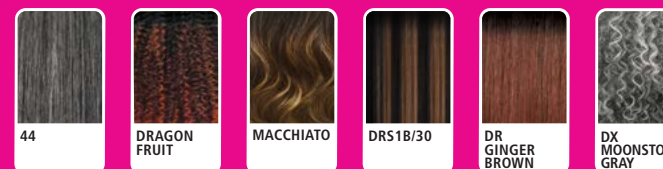


AVAILABLE COLORS

- 1, 1B, 2, 44,  
DRAGON FRUIT,  
MACCHIATO,  
DRS1B/30,  
DR GINGER BROWN,  
DX MOONSTONE GRAY



COLOR SHOWN : DX MOONSTONE GRAY, 1B, 1B (LEFT TO RIGHT)





# VELVET<sup>®</sup>

REMI

UNPROCESSED REMI.  
UNBELIEVABLE RESILIENCE.



## VELVET YAKI

### AVAILABLE LENGTHS & COLORS

- 8" : 1, 1B, 2, 27, 30, 33, 4
- 10" : 1, 1B, 2, 27, 30, 33, 4, 950, C1B/30, C1B/33, C27/30, C4/27, C4/30
- 10S" : 1, 1B, 2, 27, 30, 33, 4, 950, C1B/30, C1B/33, C4/27, C4/27/30, C4/30
- 12" : 1, 1B, 2, 27, 30, 33, 4, 613, 950, C1B/30, C1B/33, C27/30, C4/27, C4/30
- 14" : 1, 1B, 2, 27, 30, 33, 4, 613, 950, C1B/30, C1B/33, C27/30, C4/27, C4/27/30, C4/30
- 16" : 1, 1B, 2, 27, 30, 33, 4, 613, 950, C1B/30, C1B/33, C4/27, C4/30
- 18" : 1, 1B, 2, 27, 30, 33, 4, C1B/30, C1B/33, C27/30, C4/27, C4/30
- 20" : 1, 1B, 2, 4

STYLE & COLOR SHOWN : VELVET REMI YAKI 20" | 1B

# DUVESSA<sup>®</sup>

EXCEPTIONAL VALUE &  
EXQUISITE BEAUTY



## DUVESSA YAKI

### AVAILABLE LENGTHS & COLORS

- 10" : 1, 1B, 2, 27, 30, 33, 4, 613, 950, C1B/30, C1B/33, C4/27, C4/30
- 12" : 1, 1B, 2, 27, 30, 33, 4, 613, 950, C1B/30, C1B/33, C27/613, C4/27, C4/30
- 14" : 1, 1B, 2, 27, 30, 33, 4, 613, 950, C1B/30, C1B/33, C4/27, LT1/30, LT1B/427, LT1B/430, LT1B/433
- 16" : 1, 1B, 2, 27, 30, 33, 4, LT1/30, LT1B/427, LT1B/430, LT1B/433
- 18" : 1, 1B, 2, 27, 30, 33, 4, 613, 950, C1B/30, C1B/33, C4/30, LT1/30, LT1B/427, LT1B/430, LT1B/433
- 20", 22", 24" : 1, 1B, 2, 4

STYLE & COLOR SHOWN : DUVESSA YAKI 18" 22" 24" | 1B + 613



# mylk™

100% REMI HUMAN HAIR



NOURISHMENT YOU CAN FEEL.



## MYLK YAKI

### MYLK YAKI

AVAILABLE COLORS :

8" : 1, 1B, 2, 27, 30, 33, 350, 4, 425, 950, BURGUNDY  
10", 12", 14" : 1, 130S, 1B, 2, 27, 30, 33, 350, 4, 425, 613, 950, BURGUNDY, C1B/30, C1B/33, C4/27, C4/30, T1B/27, T1B/30, T1B/425, T1B/BURGUNDY, T1B/RED  
16", 18" : 1, 130S, 1B, 2, 27, 30, 33, 350, 4, 425, 613, 950, BURGUNDY  
20", 22" : 1, 1B, 2, 4

### MYLK PERM YAKI

AVAILABLE LENGTHS : 10", 12", 14"  
AVAILABLE COLORS : 1, 1B, 2, 4

### MYLK CLOSURE

AVAILABLE LENGTHS : 10", 12", 14"  
AVAILABLE COLORS : 1, 1B, 2

STYLE & COLOR SHOWN: MYLK YAKI 18" 1B

# premium purple pack®

100% HUMAN HAIR

PERFECT FOR EVERY STYLE



## PURPLE PACK YAKI

### AVAILABLE LENGTHS & COLORS

**PURPLE PACK YAKI 8" :**  
1, 130S, 1B, 2, 27, 30, 33, 350, 4, 425, 950, BURGUNDY, C1B/30, C1B/33, C27/30, C4/30

**PURPLE PACK YAKI 10" | 12" | 14" :**  
1, 130S, 1B, 2, 27, 30, 33, 350, 4, 425, 613, 950, BURGUNDY, C1B/30, C1B/33, C27/30, C27/30/33, C27/613, C4/27/30, C4/30, T1B/27, T1B/2730, T1B/30, T1B/350, T1B/BURGUNDY, T1B/RED

**PURPLE PACK YAKI 16" | 18" :**  
1, 130S, 1B, 2, 27, 30, 33, 350, 4, 425, 613, 950, BURGUNDY, C1B/30, C1B/33, C27/30/33, C27/613, C4/27/30, C4/30, T1B/27, T1B/2730, T1B/30, T1B/350, T1B/BURGUNDY, T1B/RED

**PURPLE PACK YAKI 20" :** 1, 1B, 2, 4

**PURPLE PACK YAKI 22" | 24" | 26" | 28" | 30" :** 1, 1B, 2

STYLE & COLOR SHOWN: PURPLE PACK YAKI 18" 1B



# My TRESSES

100% UNPROCESSED HUMAN HAIR

GOLD LABEL

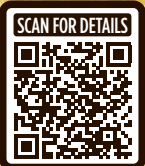
**PRE-STRETCHED**

100% UNPROCESSED HUMAN HAIR BULK

## ELEVATE YOUR BRAIDS WITH OUR HUMAN HAIR BULK

Create even more boho styles with our 100% Unprocessed Human Hair with easy-to-use, 10", 12" and 14" lengths - perfect lengths for a trendy, hassle-free look!

- 100% Unprocessed Human Hair
- 9+ Quality Grade Bundle Hair
- Comfortable, Itch-Free Wear
- Pre-Stretched & Gentle on Fingers
- Soft on Skin & Lightweight
- Dye & Customize



### NEW LENGTHS



<p><b>LOOSE DEEP BULK 18"</b></p>	<p><b>NATURAL 4C KINKY BULK 12"</b></p>	<p><b>GYPSY WAVE BULK 18", 24"</b></p>
<p>AVAILABLE COLORS NATURAL BLACK, NATURAL, 27, 30, 425, T1B/27, T1B/30, T1B/425</p>	<p>AVAILABLE COLORS NATURAL, NATURAL BLACK, 27, 30, 425, DEEP BLUE, DEEP PURPLE, HOT PINK</p>	<p>AVAILABLE LENGTHS 18", 24" AVAILABLE COLORS NATURAL, NATURAL BLACK</p>

**NATURAL DEEP BULK 10", 12", 14", 18", 24"**

AVAILABLE LENGTHS: 10", 12", 14", 18", 24"  
AVAILABLE COLORS: NATURAL BLACK, NATURAL, 27, 30, 425, T1B/27, T1B/30, T1B/425



**W&W SPLASH CORK BULK 14", 18", 24"**

AVAILABLE LENGTHS: 14", 18", 24"  
AVAILABLE COLORS: NATURAL, NATURAL BLACK



**W&W SPLASH DEEP BULK 18", 24"**

AVAILABLE LENGTHS: 18", 24"  
AVAILABLE COLORS: NATURAL, NATURAL BLACK



**NATURAL STRAIGHT BULK 14", 18", 24"**

AVAILABLE LENGTHS: 14", 18", 24"  
AVAILABLE COLORS: NATURAL, NATURAL BLACK



**NATURAL BODY BULK 18", 24"**

AVAILABLE LENGTHS: 18", 24"  
AVAILABLE COLORS: NATURAL, NATURAL BLACK