

JULY 2024

# Outre®

STYLE & COLOR SHOWN:  
X-PRESSION PRE-STRETCHED BRAID 52" | 1B + MULTI-COLORS

Outre®  
85 Oxford Drive,  
Moonachie, NJ 07074  
USA

ROCK THE  
RAINBOW WITH

**X-Pression®**



# IN THIS ISSUE

Summer's Calling for Color! Go Beyond Black with X-Pression's Endless Color Selections

X-Pression Pre-Stretched Braid has an unparalleled color selection. With a whopping range of over 60 shades, it caters to every woman's desire, from classic black to the ultra-bold.

The must-have colors include our newly introduced Aquamarine, Apple Red, and Warm Violet. But that's not all! X-Pression also boasts a stunning array of new mixes that combine classic colors in unexpected and exciting ways.

No matter your customer's preference, X-Pression offers the perfect shade to create their dream hair. So stock up on the colors of summer and make your customers' hair fantasies come to life with X-Pression.

<b>BRAID</b> <b>03</b> PRE-STRETCHED BRAID 42" 3X PRE-STRETCHED BRAID 52" 3X <i>X-Pression</i> <b>NEW COLORS</b>	<b>BRAID</b> <b>04</b> BOHO WET & WAVY VIBE BEACH BRAID 14" 3X BOHO WET & WAVY VIBE OCEAN BRAID 14" 3X <i>X-Pression</i> <b>Twisted Up</b>	<b>BRAID</b> <b>06</b> SPRINGY BOHEMIAN TWIST <i>X-Pression</i> <b>Twisted Up</b>	<b>BRAID</b> <b>08</b> PRE-STRETCHED BRAID ALL COLORS <i>X-Pression</i>
<b>HH-BLEND BULK</b> <b>10</b> DOMINICAN CURL BULK LOOSE DEEP BULK NATURAL FRENCH BULK STRAIGHT BULK <i>purple</i> <i>Bravilian</i> BUNDLE <b>PRE-STRETCHED</b>	<b>HH-WEAVE</b> <b>12</b> 4" X 4" LACE CLOSURE 10", 12", 14" 13" X 4" LACE FRONTAL 10", 12", 14" <i>Sugar</i> <i>Punch</i>	<b>LACE WIG</b> <b>14</b> CASELLA ADELINA <i>melted</i> HAIRLINE LACE FRONT WIG	<b>LACE WIG</b> <b>16</b> DANIELLA NAILANI <i>SleekLay</i> Part
<b>LACE WIG</b> <b>18</b> EVERY42 <i>EveryWear</i>	<b>LACE PART WIG</b> <b>19</b> PRIANNA <i>THE DAILY WIG</i> LACE PART WIG	<b>HH-FULL WIG</b> <b>20</b> HH-CELIA HH-CARLIE <i>Fab &amp; Fly</i> GRAY GLAMOUR	<b>HH-FULL WIG</b> <b>22</b> HH-PAMELA <i>premium</i> <i>DUBY</i> WIG 100% HUMAN HAIR
<b>FULL WIG</b> <b>23</b> ALICE <i>wigpop</i> SYNTHETIC FULL WIG <i>Style</i> SELECTS	<b>HALF WIG</b> <b>24</b> RYANNE SABLE FEBBIE KEONA <i>Quick</i> WEAVE	<b>HALF WIG</b> <b>26</b> LUMI CYPRESS HAZEL KIORA MISHA OLEANA SHANAY MIRIAM <i>Quick</i> WEAVE	<b>CONVERTI-CAP</b> <b>28</b> SPIRAL SYMPHONY <i>converti-cap</i>
<b>PONYTAIL</b> <b>29</b> KINA <i>Outre</i> <i>Pretty Quick</i> PREMIUM SYNTHETIC FIBER <b>PONY</b>	<b>PONYTAIL</b> <b>30</b> OLA JESS LYLA MAY CORRIE KINKY CURLY 12" MAVE <i>Outre</i> <i>Pretty Quick</i> PREMIUM SYNTHETIC FIBER <b>PONY</b>	<b>PONYTAIL</b> <b>31</b> BONE STRAIGHT 34" KINKY STRAIGHT 28" LOOSE BODY 28" <i>Outre</i> <i>Pretty Quick</i> PREMIUM SYNTHETIC FIBER <b>WRAP PONY</b>	

**NEW COLOR**

**42" 52"**

**X-Pression**

**PRE-STRETCHED**



Baby pink is the braid shade of the summer! Don't get caught without this NEW X-Pression color on your shelves.

- Pre-Stretched & Pre-Layered
- Quickest Install
- Easy to Braid
- Easy to Manage
- Ultra Lightweight
- Hot Water Set Friendly
- Tangle-Free

## PRE-STRETCHED BRAID 42" 3X & 52" 3X

### PRE-STRETCHED BRAID 42" 3X:

1, 130S, 1B, 2, 27, 30, 33, 34, 350, 4, 425, 44, 51, 60, 280, 613, 613A, 99J, 2T1B/130S, 2T1B/27, 2T1B/2730, 2T1B/27613, 2T1B/30, 2T1B/33, 2T1B/350, 2T1B/60, 2T1B/BLUE, 2T1B/BURGUNDY, 2T1B/FORSYTHIA, 2T1B/INDIGO, 2T1B/LUXE BLUE, 2T1B/MINT VIBES, 2T1B/OLIVE, 2T1B/SHOCKING PINK, AMBER, APPLE RED, APRICOT, AQUA MARINE, BABY PINK, BLUE, BURGUNDY, DRAGON FRUIT, FORSYTHIA, INDIGO, LUXE BLUE, MINT, MINT VIBES, OLIVE, PURPLE, SHOCKING PINK, VIOLET, WARM VIOLET, WILD CHERRY, M1B/30, M1B/350, M1B/425, M4/30, M4/27/30, M4/27/613, M4/27/30/613, M27/613, M27/30/613, M27/30, M950/425/350/130S

### PRE-STRETCHED BRAID 52" 3X:

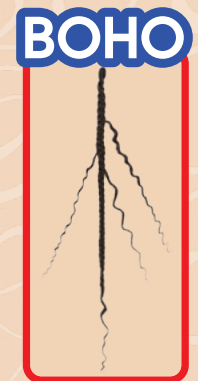
1, 1B, 2, 4, 27, 27+30+613, 30, 33, 34, 44, 51, 60, 99J, 130S, 280, 350, 425, 613, 613A, AMBER, APPLE RED, APRICOT, AQUA MARINE, BABY PINK, BLUE, BLUE RASPBERRY, BRIGHT RED, BURGUNDY, DRAGON FRUIT, FORSYTHIA, GLOW NEON HOTPINK, GLOW NEON LEMON YELLOW, GLOW NEON ORANGE, GLOW NEON PUMPKIN, GREEN SHAKE, HOT PINK, INDIGO, LUXE BLUE, MINT, MINT VIBES, MOODY SKY BLUE, OLIVE, PARTY PUNCH, PUMPKIN SPICE, PURPLE, PURPLE RAIN, RASTA, ROSE GOLD, SHOCKING PINK, SKY BREEZY, SILVER GRAY, SMOKEY LILAC, SUN FLOWER, SWEDISH BLONDE, UNICORN, VIOLET, WARM VIOLET, WILD CHERRY, 2T1B/130S, 2T1B/27, 2T1B/2730, 2T1B/27613, 2T1B/30, 2T1B/33, 2T1B/350, 2T1B/60, 2T1B/BLUE, 2T1B/BURGUNDY, 2T1B/FORSYTHIA, 2T1B/INDIGO, 2T1B/LUXE BLUE, 2T1B/MINT VIBES, 2T1B/OLIVE, 2T1B/PURPLE, 2T1B/ROSE GOLD, 2T1B/SHOCKING PINK, 2T1B/SILVER GRAY, M1B/27, M1B/30, M1B/350, M1B/425, M4/30, M4/27/30, M4/27/613, M4/27/30/613, M27/613, M27/30/613, M27/30, M950/425/350/130S





# X-Pression® Twisted Up®

Nothing says summer like waves and braids!  
Get both with the new 14" Boho W&W  
Vibe Beach Braid.



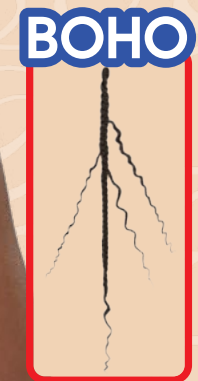
- Made with 100% Premium Synthetic Fiber
- Quick, Long Lasting Protective Style
- Soft texture
- Lightweight

COLOR SHOWN : CT/27



# X-Pression® Twisted Up®

Bohemian braids with beachy waves make  
the Boho W&W Vibe Ocean Braid the style  
of the season.



- Made with 100% Premium Synthetic Fiber
- Quick, Long Lasting Protective Style
- Soft texture
- Lightweight

COLOR SHOWN : CT/MACCHIATO

## BOHO WET & WAVY VIBE BEACH BRAID 14" 3X



AVAILABLE COLORS  
1, 1B, 2, 4, CT/27, CT/30, CT/425, CT/COPPER ORANGE, CT/DRAGON FRUIT, CT/MACCHIATO

SPECIAL COLORS

CROCHET LOOP LIGHTWEIGHT

## BOHO WET & WAVY VIBE OCEAN BRAID 14" 3X



AVAILABLE COLORS  
1, 1B, 2, 4, CT/27, CT/30, CT/425, CT/COPPER ORANGE, CT/DRAGON FRUIT, CT/MACCHIATO

SPECIAL COLORS

CROCHET LOOP LIGHTWEIGHT



3 SPRINGY TEXTURES, ENDLESS BRAID MAGIC.



SPRINGY AFRO TWIST



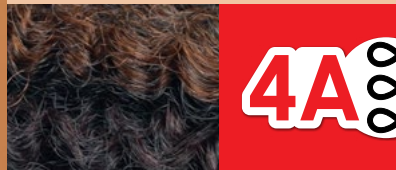
SPRINGY BOHEMIAN TWIST



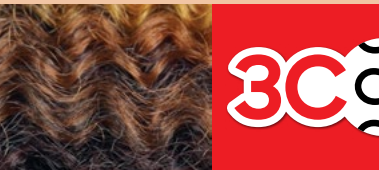
WATERWAVE FRO TWIST



4C



4A



3C

SMALLER CURL

MEDIUM

BIGGER CURL

BOHO STYLE

WITH WATERWAVE FRO TWIST +MYTRESSES GOLD BULK HAIR



Influencer, Hairscope, mixed and matched Outre products to create this hip-length, beautiful Boho style. But there's more than just one Boho look! With X-Pression, Twisted Up, and MyTresses Gold Bulk Hair, professional and DIY braiders can create them all.

X-Pression Twisted Up WATERWAVE FRO TWIST 22" 2X



My TRESSES 100% UNPROCESSED HUMAN HAIR GOLD LABEL BULK PRE-STRETCHED 100% UNPROCESSED HUMAN HAIR BULK



X-Pression Twisted Up 100% KANEKALON FIBER SPRINGY BOHEMIAN TWIST

WAVES WITH A HINT OF TEXTURE. IT'S BOHO BLISS IN A TWIST!



STYLE & COLOR SHOWN : SPRINGY BOHEMIAN TWIST 30" | 4 • MACCHIATO





**NEW COLORS** 42" 52"



# X-Pression®

## PRE-STRETCHED

Rock the Rainbow with X-Pression

- Pre-Stretched & Pre-Layered
- Quickest Install
- Easy to Braid
- Easy to Manage
- Ultra Lightweight
- Hot Water Set Friendly
- Tangle-Free



**PRE-STRETCHED BRAID 42" 3X:**

AVAILABLE COLORS:

1, 130S, 1B, 2, 27, 30, 33, 34, 350, 4, 425, 44, 51, 60, 280, 613, 613A, 99J, 2T1B/130S, 2T1B/27, 2T1B/2730, 2T1B/27613, 2T1B/30, 2T1B/33, 2T1B/350, 2T1B/60, 2T1B/BLUE, 2T1B/BURGUNDY, 2T1B/FORSYTHIA, 2T1B/INDIGO, 2T1B/LUXE BLUE, 2T1B/MINT VIBES, 2T1B/OLIVE, 2T1B/SHOCKING PINK, AMBER, APPLE RED, APRICOT, AQUA MARINE, BABY PINK, BLUE, BURGUNDY, DRAGON FRUIT, FORSYTHIA, INDIGO, LUXE BLUE, MINT VIBES, OLIVE, PURPLE, SHOCKING PINK, VIOLET, WARM VIOLET, WILD CHERRY, M1B/27, M1B/30, M1B/350, M1B/425, M4/30, M4/27/30, M4/27/613, M4/27/30/613, M27/613, M27/30/613, M27/30, M950/425/350/130S, MINT

**PRE-STRETCHED BRAID 52" 3X:**

AVAILABLE COLORS:

1, 1B, 2, 4, 27, 27+30+613, 30, 33, 34, 44, 51, 60, 99J, 130S, 280, 350, 425, 613, 613A, AMBER, APPLE RED, APRICOT, AQUA MARINE, BABY PINK, BLUE, BLUE RASPBERRY, BRIGHT RED, BURGUNDY, DRAGON FRUIT, FORSYTHIA, GLOW NEON HOTPINK, GLOW NEON LEMON YELLOW, GLOW NEON ORANGE, GLOW NEON PUMPKIN, GREEN SHAKE, HOT PINK, INDIGO, LUXE BLUE, MINT, MINT VIBES, MOODY SKY BLUE, OLIVE, PARTY PUNCH, PUMPKIN SPICE, PURPLE, PURPLE RAIN, RASTA, ROSE GOLD, SHOCKING PINK, SKY BREEZY, SILVER GRAY, SMOKEY LILAC, SUN FLOWER, SWEDISH BLONDE, UNICORN, VIOLET, WARM VIOLET, WILD CHERRY, 2T1B/130S, 2T1B/27, 2T1B/2730, 2T1B/27613, 2T1B/30, 2T1B/33, 2T1B/350, 2T1B/60, 2T1B/BLUE, 2T1B/BURGUNDY, 2T1B/FORSYTHIA, 2T1B/INDIGO, 2T1B/LUXE BLUE, 2T1B/MINT VIBES, 2T1B/OLIVE, 2T1B/PURPLE, 2T1B/ROSE GOLD, 2T1B/SHOCKING PINK, 2T1B/SILVER GRAY, M1B/27, M1B/30, M1B/350, M1B/425, M4/30, M4/27/30, M4/27/613, M4/27/30/613, M27/613, M27/30/613, M27/30, M950/425/350/130S





## DOMINICAN CURL BULK 18" / 24"

AVAILABLE LENGTHS : 18", 24"  
AVAILABLE COLORS :  
JET BLACK, NATURAL BLACK, NATURAL, 27, 30, 130S,  
425, 950, C1B/30, C1B/350, C1B/425, C4/27/30,  
C950/425/350, DR27, DR30, DR425, COPPER ORANGE



## LOOSE DEEP BULK 18" / 24"

AVAILABLE LENGTHS : 18", 24"  
AVAILABLE COLORS :  
JET BLACK, NATURAL BLACK, NATURAL, 27, 30, 130S,  
425, 950, C1B/30, C1B/350, C1B/425, C4/27/30,  
C950/425/350, DR27, DR30, DR425, COPPER ORANGE



## NATURAL FRENCH BULK 18" / 24"

AVAILABLE LENGTHS : 18", 24"  
AVAILABLE COLORS :  
JET BLACK, NATURAL BLACK, NATURAL,  
27, 30, 425, 950



## STRAIGHT BULK 18" / 24"

AVAILABLE LENGTHS : 18", 24"  
AVAILABLE COLORS :  
JET BLACK, NATURAL BLACK, NATURAL,  
27, 30, 425, 950

premium purple pack  
**BULK**  
*Brazilian*  
**BUNDLE**  
PRE-STRETCHED  
HUMAN HAIR BLEND BULK

Affordable, blendable, and designed for the newest bohemian looks.

- 100% Human Hair Premium Blend
- Pre-Stretched & Tangle Free
- Lightweight, Soft on Skin, Itch-Free Wear
- Curling Iron Safe
- Perfect for Boho Styles, Knotless Styles, Goddess Braids and More



### SPECIAL COLORS







**STRAIGHT**  
NATURAL



**BODY**  
NATURAL BLACK



**OCEAN**  
NATURAL



**BOHEMIAN**  
NATURAL



**DEEP**  
NATURAL BLACK



# Sugar Punch™

100% UNPROCESSED REMY HUMAN HAIR

**Remy**

**4"x4" 13"x4"**

**LACE CLOSURE**

**100% FULLY HAND-TIED**

**DOUBLE DRAWN**  
FOR FULL, THICK ENDS  
**Smooth, Resilient STRANDS**

SUGARPUNCH closures and bundles are the perfect pair of the highest quality hair! Closures now available in new lengths.

- 100% Unprocessed Remy Human Hair
- 4"x4" HD Transparent Lace Closure / 13"x4" HD Transparent Lace Frontal
- Thick, Lush, Tangle-Free Ends
- Smooth, Resilient Hair & Long-Lasting Bundles
- One Directional Strands for More Tangle Resistance
- Pre-Plucked Hairline & Natural-Looking Baby Hair
- Double Drawn Process with Cuticle Retained Strands
- Bleach / Dye / Customize
- No Shedding

**4"x4" LACE CLOSURE**



AVAILABLE COLORS : NATURAL BLACK, NATURAL  
AVAILABLE LENGTHS : 10", 12", 14"

**13"x4" LACE FRONTAL**



AVAILABLE COLORS : NATURAL BLACK, NATURAL  
AVAILABLE LENGTHS : 10", 12", 14"



# melted HAIRLINE®



LACE FRONT WIG

Casella's expertly placed highlights make every layer pop, and its long bangs swoop to the side.

- Soft HD Transparent Lace
- 5" Deep Parting
- Completely Pre-Plucked Hairline & Sideburns
- Pre-Attached Wide Elastic Band for Secure Fit
- Fast, Easy & Effortless Glueless Installs
- Natural Baby Hairs
- Redesigned ComfortFit Ear Contour
- Heat Resistant Fiber



COLOR SHOWN : DRFF2/FUDGE SUNDAE

# melted HAIRLINE®



LACE FRONT WIG

This short cut has spunk! Adelina's razor-cut, shaggy ends add a twist to this bob.

- Soft HD Transparent Lace
- 5" Deep Parting
- Completely Pre-Plucked Hairline & Sideburns
- Pre-Attached Wide Elastic Band for Secure Fit
- Fast, Easy & Effortless Glueless Installs
- Natural Baby Hairs
- Redesigned ComfortFit Ear Contour
- Heat Resistant Fiber



COLOR SHOWN : DR BROWN SUGAR SWIRL

## CASELLA 22"



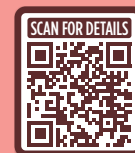
AVAILABLE COLORS

- 1, 1B, 2,  
430/PEEKA 3527,  
FLAMINGO PINK,  
RED VELVET,  
TIRAMISU,  
DRFF ORANGE FLAME,  
DRFF2/FUDGE SUNDAE,  
DRST2/CHOCOLATE CARAMEL



COLOR SHOWN : FLAMINGO PINK, 430/PEEKA 3527, DRFF2/FUDGE SUNDAE, DRFF2/FUDGE SUNDAE (LEFT TO RIGHT)

## ADELINA 14"



AVAILABLE COLORS

- 1, 1B, 2,  
STRAWBERRY GOLD,  
DR BROWN SUGAR SWIRL,  
DR MULLED WINE,  
DR2/GINGER BROWN,  
DR4/PEARL BLONDE,  
DRFF4/GOLDEN HONEY,  
DRFF4/HAZELNUT HONEY



COLOR SHOWN : DRFF4/GOLDEN HONEY, DR2/GINGER BROWN, DR BROWN SUGAR SWIRL, DR BROWN SUGAR SWIRL (LEFT TO RIGHT)





# SleekLay<sup>®</sup>

LACE FRONT WIG Part

PRE-STYLED BANGS



COLOR SHOWN : DRST BLACK PINK

Put down the scissors and flat iron, and grab the new Daniella wig with pre-styled bangs and deep-c side part.

- Wider Hand-Tied Lace Part
- Deep C-Shape Side Parting
- Extra Hand-Tied Lace Edges
- Hump-Less, Laid finish
- Pre-Plucked Hairline
- Natural Baby Hairs
- Pre-Attached Wide Elastic Band for Glueless Installs
- Heat-Friendly

## DANIELLA 28"

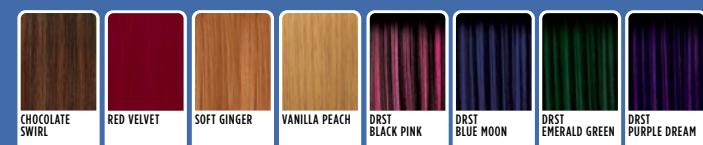


AVAILABLE COLORS

- 1, 1B, 2,  
CHOCOLATE SWIRL,  
RED VELVET,  
SOFT GINGER,  
VANILLA PEACH,  
DRST BLACK PINK,  
DRST BLUE MOON,  
DRST EMERALD GREEN,  
DRST PURPLE DREAM



COLOR SHOWN : DRST BLUE MOON, DRST BLACK PINK, DRST BLACK PINK (LEFT TO RIGHT)



PRE-STYLED BANGS



COLOR SHOWN : DRST EMERALD GREEN

# SleekLay<sup>®</sup>

LACE FRONT WIG Part

With Nailani you'll spend less time cutting bangs and more time living life.

- Wider Hand-Tied Lace Part
- Deep C-Shape Side Parting
- Extra Hand-Tied Lace Edges
- Hump-Less, Laid finish
- Pre-Plucked Hairline
- Natural Baby Hairs
- Pre-Attached Wide Elastic Band for Glueless Installs
- Heat-Friendly

## NAILANI 26"

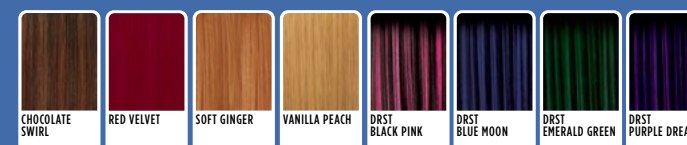


AVAILABLE COLORS

- 1, 1B, 2,  
CHOCOLATE SWIRL,  
RED VELVET,  
SOFT GINGER,  
VANILLA PEACH,  
DRST BLACK PINK,  
DRST BLUE MOON,  
DRST EMERALD GREEN,  
DRST PURPLE DREAM



COLOR SHOWN : DRST PURPLE DREAM, DRST EMERALD GREEN, DRST EMERALD GREEN (LEFT TO RIGHT)





# EveryWear™

LACE FRONT WIG

No matter where you go and what you do, Every42's lush curls will boost your mood.

- Ear-to-Ear HD Lace
- Easy, Goes-with-Everything Style
- Heat Resistant Fiber



COLOR SHOWN : GINGER AUBURN

## EVERY42 20"



COLOR SHOWN : DR4/CREAMY ASH BLONDE, GINGER AUBURN, GINGER AUBURN (LEFT TO RIGHT)

AVAILABLE COLORS  
 1, 1B, 2, BLUE STEEL, BURGUNDY,  
 GINGER AUBURN, GOLDEN AMBER,  
 SANDY BLONDE,  
 DR2/HAZELNUT BROWN,  
 DR4/CREAMY ASH BLONDE,  
 DRST VAMPIRE RED



# THE DAILY WIG™

PREMIUM SYNTHETIC FIBERS  
 LACE PART WIG

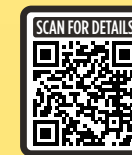


COLOR SHOWN : TD BLUE SEA

Prianna is for the vibrant, go-getter that wants to add spice to her workweek with waves and a touch of color in an easy to wear unit.

- Premium Synthetic Fibers
- Pre-Plucked & Hand-Tied Lace I-Part
- Breathable Mesh Cap
- Heat-Styling Friendly

## PRIANNA 20"



COLOR SHOWN : ST ORANGE CREAMSICLE, ST ORANGE CREAMSICLE, ST ORANGE CREAMSICLE (LEFT TO RIGHT)

AVAILABLE COLORS  
 1, 1B, 2, 1B/PEEKA 27613,  
 425/PEEKA RED99J, TIRAMISU,  
 DR CHOCOLATE CREAM,  
 DRFF4/VANILLA COFFEE MELT,  
 ST ORANGE CREAMSICLE,  
 TD BLUE SEA





**Fab & Fly™** **GRAY GLAMOUR**  
100% HUMAN HAIR

Sophistication meets speed with the HH-Celia unit.  
Easily add mature elegance to any look.

- 100% Human Hair
- Breathable Mesh Cap
- Comfortable & Secure Fit
- Voluminous & Full
- Easy-to-Wear & Style
- Also Available in Natural Colors (100% Unprocessed Human Hair)

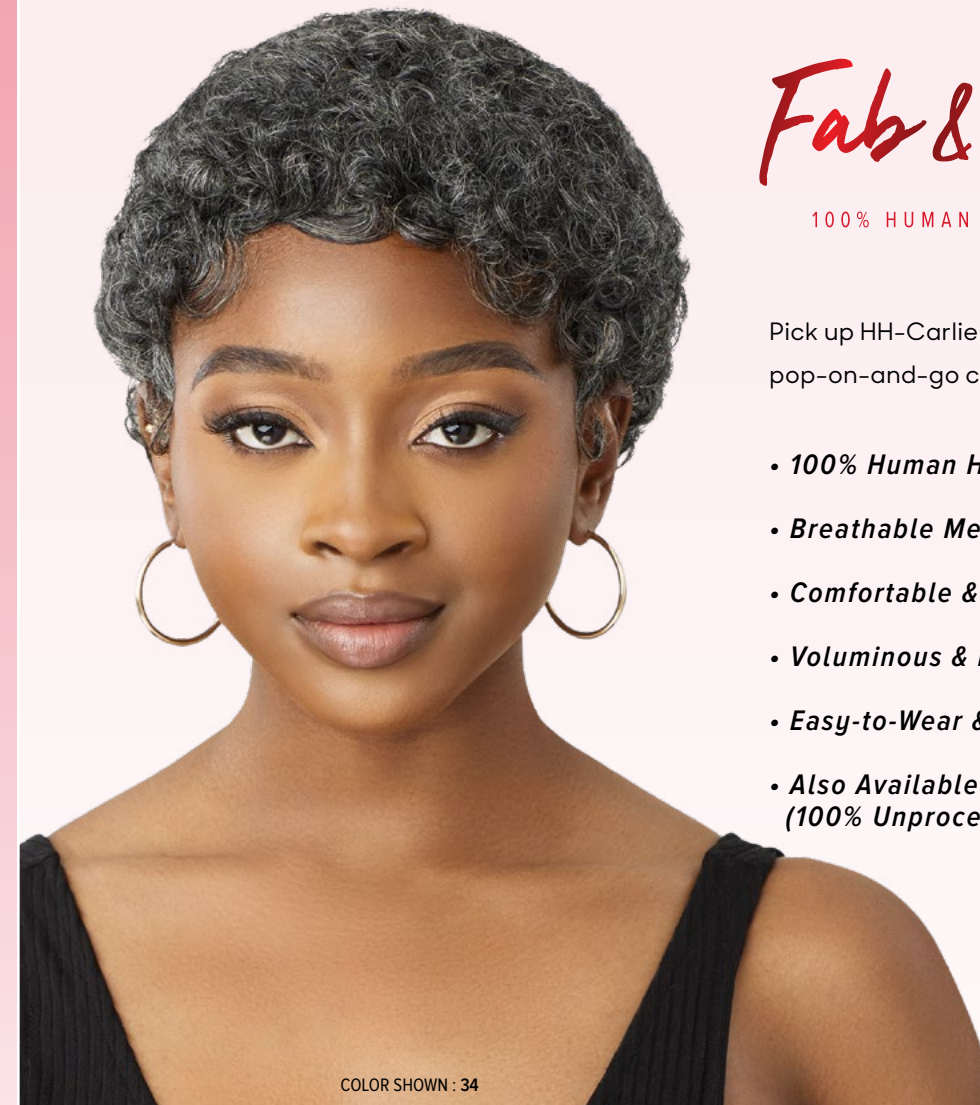


COLOR SHOWN : 34

**Fab & Fly™** **GRAY GLAMOUR**  
100% HUMAN HAIR

Pick up HH-Carlie for your older customers. It's our new pop-on-and-go curly cut available in gray.

- 100% Human Hair
- Breathable Mesh Cap
- Comfortable & Secure Fit
- Voluminous & Full
- Easy-to-Wear & Style
- Also Available in Natural Colors (100% Unprocessed Human Hair)



COLOR SHOWN : 34

**HH-CELIA**



COLOR SHOWN : OM280/44, 34, 34 (LEFT TO RIGHT)

AVAILABLE COLORS

- NATURAL BLACK,  
NATURAL BROWN,  
34, 44, 280,  
HL280/44,  
OM280/44



*Natural Brown is  
bleach & dye friendly.*

**HH-CARLIE**



COLOR SHOWN : 51, 34, 34 (LEFT TO RIGHT)

AVAILABLE COLORS

- NATURAL BLACK,  
NATURAL BROWN,  
34,  
44,  
51



*Natural Brown is  
bleach & dye friendly.*

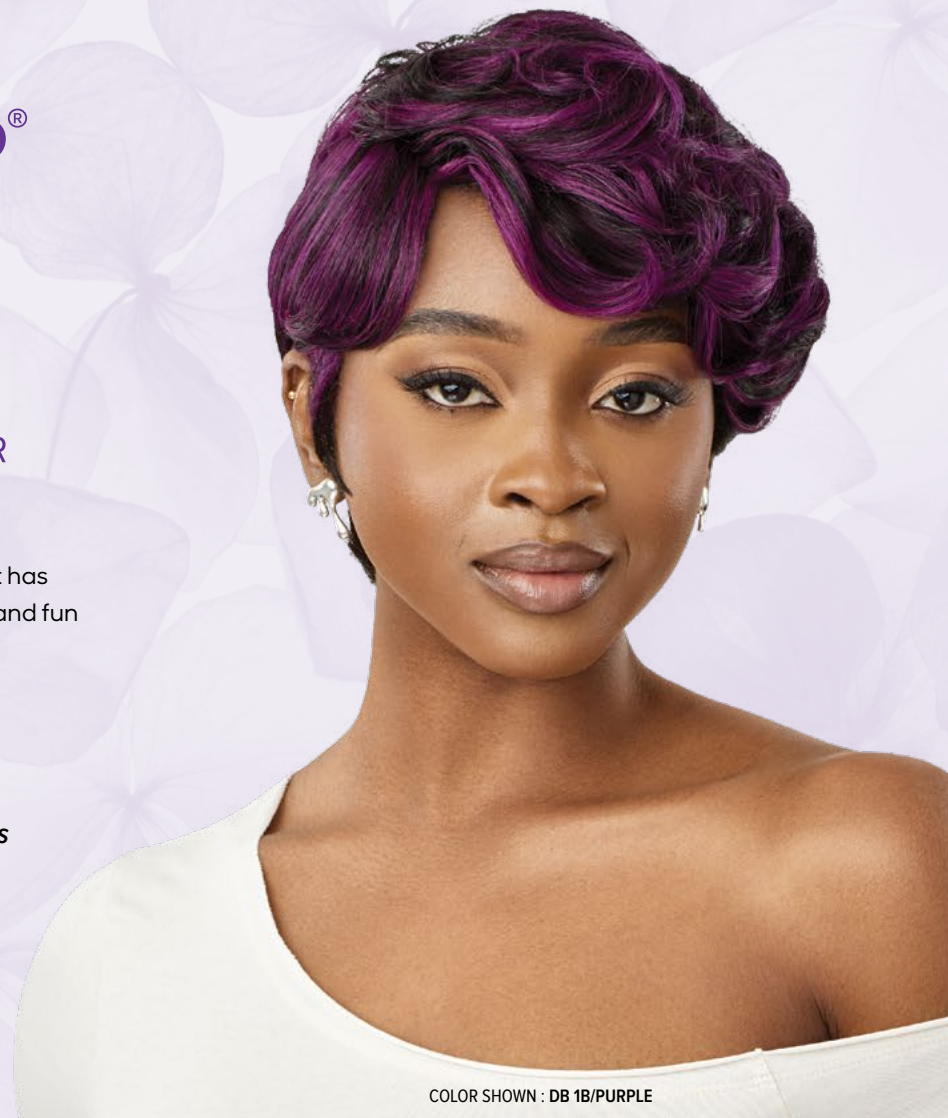


# premium DUBY WIG

100% HUMAN HAIR

HH-Pamela is no ordinary pixie! This pretty cut has curls at the crown and comes in both natural and fun colors like purple, blue, burgundy, and more!

- 100% Premium Human Hair
- A Variety of Classic Styles and Color Options
- Affordable
- Durable and Long Lasting



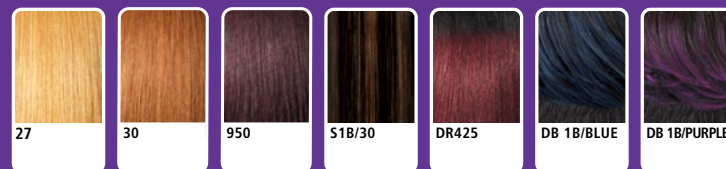
COLOR SHOWN : DB 1B/PURPLE

## HH-PAMELA



COLOR SHOWN : S1B/30, DB 1B/PURPLE, DB 1B/PURPLE (LEFT TO RIGHT)

AVAILABLE COLORS  
1, 1B, 2, 27,  
30, 950,  
S1B/30,  
DR425,  
DB 1B/BLUE,  
DB 1B/PURPLE



COLOR SHOWN : DRFF4/VANILLA ASH BLONDE

wigpop

SYNTHETIC FULL WIG



Alice has it all! Budget-friendly, beachy waves, and wispy bangs.

- Easy to Wear, Elevated Looks
- Special Styles: More curls, more textures, more length
- Ready to Wear & Go
- Heat-Styling Friendly

## ALICE 16"



COLOR SHOWN : DR99J/ROSY SPICE, DRFF4/VANILLA ASH BLONDE, DRFF4/VANILLA ASH BLONDE (LEFT TO RIGHT)

AVAILABLE COLORS  
1, 1B, 2,  
CHOCOLATE SWIRL,  
COPPER,  
GOLDEN AMBER,  
HAVANA BROWN,  
RED VELVET,  
DR99J/ROSY SPICE,  
DRFF4/VANILLA ASH BLONDE







COLOR SHOWN : DR2/LIGHT NATURAL BROWN

**FEBBIE 20"**



COLOR SHOWN : DR4/TIRAMISU, DR2/LIGHT NATURAL BROWN, DR2/LIGHT NATURAL BROWN (LEFT TO RIGHT)

AVAILABLE COLORS

- 1, 1B, 2, S1B/30, DR RED VELVET, DR2/CREAMY TOFFEE, DR2/GINGER BROWN, DR2/LIGHT NATURAL BROWN, DR4/ASH BROWN, DR4/TIRAMISU



COLOR SHOWN : DR2/CREAMY TOFFEE

**KEONA 14"**



COLOR SHOWN : 1B, DR2/CREAMY TOFFEE, DR2/CREAMY TOFFEE (LEFT TO RIGHT)

AVAILABLE COLORS

- 1, 1B, 2, S1B/30, DR CHOCOLATE SWIRL, DR RED VELVET, DR2/CREAMY TOFFEE, DR2/GINGER BROWN, DR4/ASH BROWN, DR4/TIRAMISU



COLOR SHOWN : DR DRAGON FRUIT

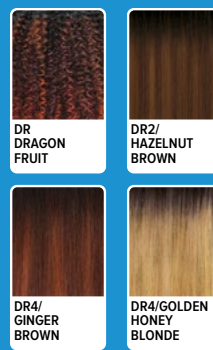
**RYANNE 28"**



COLOR SHOWN : DR4/GOLDEN HONEY BLONDE, DR DRAGON FRUIT, DR DRAGON FRUIT (LEFT TO RIGHT)

AVAILABLE COLORS

- 1, 1B, 2, DR DRAGON FRUIT, DR2/HAZELNUT BROWN, DR4/GINGER BROWN, DR4/GOLDEN HONEY BLONDE



COLOR SHOWN : DR CHAI LATTE

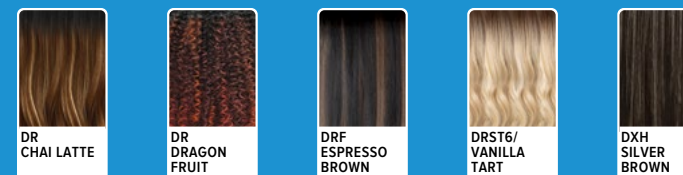
**SABLE 16"**



COLOR SHOWN : DXH SILVER BROWN, DR CHAI LATTE, DR CHAI LATTE (LEFT TO RIGHT)

AVAILABLE COLORS

- 1, 1B, 2, DR CHAI LATTE, DR DRAGON FRUIT, DRF ESPRESSO BROWN, DRST6/VANILLA TART, DXH SILVER BROWN



# Quick WEAVE®

Febbie is a sew-in, cut and color in a box! Add layers, bangs, and realistic body, fast!

Keona gives off natural with a hint of effortless glam! She adds subtle waves with believable length and density.

Turn your hair dreams into reality with Ryanne! Add romantic curls and 28 inches in an instant.

Sable's blendable curls and swirls will make your heart skip a beat! Create a million summer styles you'll love with this half-wig.

- Natural Texture & Volume
- New Cap Lays Flatter
- High Heat Resistant Fiber
- Easy-to-Wear Styles
- Less Leave Out Required







COLOR SHOWN : DR GINGER TOFFEE

**CYPRESS 14"**

AVAILABLE COLORS  
1, 1B, 2, DR GINGER TOFFEE, DR RED VELVET, DR2/GOLDEN AMBER, DR2/HAZELNUT BROWN, DR4/MUSHROOM BLONDE, DRF ESPRESSO BROWN



COLOR SHOWN : DR GINGER BROWN

**HAZEL 20"**

AVAILABLE COLORS  
1, 1B, 2, DR CHAI LATTE, DR GINGER BROWN, DR RED VELVET, DR2/CHOCOLATE SWIRL, DR4/BLONDE LATTE MELT, DR4/MUSHROOM BLONDE



COLOR SHOWN : 1B

**KIORA 14"**

AVAILABLE COLORS  
1, 1B, 2, 34, S1B/30, DR CHOCOLATE SWIRL, DR2/CINNAMON WINE, DR2/CREAMY TOFFEE, DR2/GINGER BROWN, DR4/TIRAMISU



COLOR SHOWN : DR CHOCOLATE CREAM

**OLEANA 24"**

AVAILABLE COLORS  
1, 1B, 2, DR CHOCOLATE CREAM, DR CHOCOLATE SWIRL, DR RED VELVET, DR2/GINGER BROWN, DR2/GOLDEN AMBER, DR4/TIRAMISU



COLOR SHOWN : DRF ESPRESSO BROWN

**LUMI 26"**

AVAILABLE COLORS  
1, 1B, 2, DR GINGER BROWN, DR RED VELVET, DR2/CHOCOLATE SWIRL, DR2/SUNSET COPPER, DR2/VANILLA COCOA, DRF ESPRESSO BROWN



COLOR SHOWN : 2

**MIRIAM 14"**

AVAILABLE COLORS  
1, 1B, 2, 34, S1B/30, DR GINGER TOFFEE, DR RED VELVET, DR2/CHOCOLATE SWIRL, DR4/MUSHROOM BLONDE, DRST2/CHOCOLATE CARAMEL



COLOR SHOWN : DR CHOCOLATE SWIRL

**MISHA 18"**

AVAILABLE COLORS  
1, 1B, 2, 34, S1B/30, DR CHOCOLATE SWIRL, DR2/CINNAMON WINE, DR2/CREAMY TOFFEE, DR2/GINGER BROWN, DR4/TIRAMISU



COLOR SHOWN : DR2/CREAMY TOFFEE

**SHANAY 24"**

AVAILABLE COLORS  
1, 1B, 2, S1B/30, DR CHOCOLATE SWIRL, DR RED VELVET, DR2/CREAMY TOFFEE, DR2/GINGER BROWN, DR2/GOLDEN AMBER, DR4/TIRAMISU

**Quick WEAVE®**



Skip the Salon Sew-Ins!

Create the latest trends in a snap with Quick Weave.

Our new Quick Weave styles will keep you effortlessly on-trend.

- Natural Texture & Volume
- New Cap Lays Flatter
- High Heat Resistant Fiber
- Easy-to-Wear Styles
- Less Leave Out Required





# converti-cap®

PREMIUM SYNTHETIC FIBERS

Let your creativity go crazy with our curly Converti-Cap wig, Spiral Symphony! Fluff it, bun it, bang it, or wear it however you like.

- Limitless styling possibilities
- Reveal your own hairline for a realistic look
- Breathable and flexible cap that lays flat
- Adjustable drawstring for a custom fit
- Premium Synthetic Fibers
- Bacteria-Resistant Cap



COLOR SHOWN : DR DRAGON FRUIT

## SPIRAL SYMPHONY 14"



COLOR SHOWN : DR DRAGON FRUIT, 1B, 1B, DR4/BROWN SUGAR MELT, 1B, 1B (LEFT TO RIGHT)

AVAILABLE COLORS

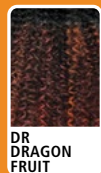
- 1, 1B, 2, 34,
- DR CHAI LATTE,
- DR DRAGON FRUIT,
- DR2/CHOCOLATE SWIRL,
- DR2/VANILLA COCOA,
- DR4/BROWN SUGAR MELT



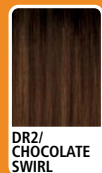
34



DR CHAI LATTE



DR DRAGON FRUIT



DR2/CHOCOLATE SWIRL



DR2/VANILLA COCOA



DR4/BROWN SUGAR MELT



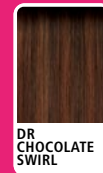
## KINA 22"



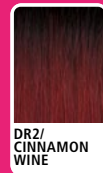
COLOR SHOWN : DR CHOCOLATE SWIRL, DR CHOCOLATE SWIRL (LEFT TO RIGHT)

AVAILABLE COLORS

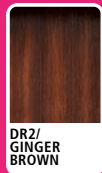
- 1, 1B, 2,
- DR CHOCOLATE SWIRL,
- DR2/CINNAMON WINE,
- DR2/GINGER BROWN,
- DR2/GOLDEN AMBER,
- DR2/TIRAMISU



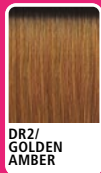
DR CHOCOLATE SWIRL



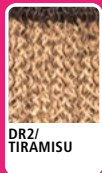
DR2/CINNAMON WINE



DR2/GINGER BROWN



DR2/GOLDEN AMBER



DR2/TIRAMISU



# Pretty Quick™

PREMIUM SYNTHETIC FIBER

## PONY

Short on time or can't decide? Grab your wavy Kina pony for a fast and easy style solution.

- Natural Look & Soft Texture
- Quick & Easy Styling
- Lightweight Drawstring Construction
- Premium Synthetic Fiber



# Pretty Quick™

PREMIUM SYNTHETIC FIBER

## PONY



COLOR SHOWN : 1B (LEFT), DR CHOCOLATE SWIRL (RIGHT)

### CORRIE 12"



AVAILABLE COLORS  
1, 1B, 2, DR CHOCOLATE SWIRL, DR2/CINNAMON WINE,  
DR2/GINGER BROWN, DR2/GOLDEN AMBER, DR2/TIRAMISU



COLOR SHOWN : 1B (LEFT), CHOCOLATE SWIRL (RIGHT)

### JESS 26"



AVAILABLE COLORS  
1, 1B, 2, CHOCOLATE SWIRL, DR2/CINNAMON WINE,  
DR2/GINGER BROWN, DR2/GOLDEN AMBER, DR2/TIRAMISU



COLOR SHOWN : DR DRAGON FRUIT (LEFT), 1B (RIGHT)

### KINKY CURLY 12"



AVAILABLE COLORS  
1, 1B, 2, DR DRAGON FRUIT, DR2/CHOCOLATE SWIRL,  
DR2/GINGER BROWN, DR4/MUSHROOM BLONDE, DRF ESPRESSO BROWN



COLOR SHOWN : DRST HONEY BROWN (LEFT), 1 (RIGHT)

### LYLA 30"



AVAILABLE COLORS  
1, 1B, 2, CHOCOLATE SWIRL, DR2/CINNAMON WINE,  
DR2/GINGER BROWN, DR2/GOLDEN AMBER, DR2/TIRAMISU, DRST HONEY BROWN



COLOR SHOWN : 1B (LEFT), DR2/GINGER BROWN (RIGHT)

### MAY 26"



AVAILABLE COLORS  
1, 1B, 2, DR CHOCOLATE SWIRL, DR2/CINNAMON WINE,  
DR2/GINGER BROWN, DR2/GOLDEN AMBER, DR2/TIRAMISU



COLOR SHOWN : 1B (LEFT), DR2/TIRAMISU

### OLA 20"



AVAILABLE COLORS  
1, 1B, 2, CHOCOLATE SWIRL, DR2/CINNAMON WINE,  
DR2/GINGER BROWN, DR2/GOLDEN AMBER, DR2/TIRAMISU, DRST HONEY BROWN



COLOR SHOWN : 1B (LEFT), DR2/TIRAMISU (RIGHT)

### MAVE 30"



AVAILABLE COLORS  
1, 1B, 2, DR CHOCOLATE SWIRL, DR2/CINNAMON WINE,  
DR2/GINGER BROWN, DR2/GOLDEN AMBER, DR2/TIRAMISU



COLOR SHOWN : 1B (LEFT), DR RED VELVET (RIGHT)

### BONE STRAIGHT 34"



AVAILABLE COLORS : 1, 1B, 2, DR RED VELVET, DR2/CHOCOLATE SWIRL,  
DR2/GINGER BROWN, DR4/HONEY GOLD



COLOR SHOWN : 1B (LEFT), 1B (RIGHT)

### KINKY STRAIGHT 28"



AVAILABLE COLORS : 1, 1B, 2, DR GINGER BROWN, DR HONEY AUBURN,  
DR RED VELVET, DR2/CHOCOLATE SWIRL, DRF ESPRESSO BROWN

# Pretty Quick™

PREMIUM SYNTHETIC FIBER

## WRAP PONY



Life's Too Short for Complicated Hair

This summer, get fast, polished ponytails in every curl, wave, and texture.



COLOR SHOWN : 1B

### LOOSE BODY 28"



AVAILABLE COLORS : 1, 1B, 2, PAPRIKA SPICE, DR2/SUNSET COPPER,  
DR4/BROWN SUGAR MELT, DR4/SANDY BLONDE MELT





# X-Pression<sup>®</sup>

## BEYOND BRAIDS THIS IS X-PRESSION.

100% Kanekalon

