

JULY 2023

Outree®



STYLE & COLOR SHOWN:
ORIGINAL BOX BRAID 18" 3X | 2T1B/27 (LEFT)
BOX BRAID FRENCH CURL 22" 3X | 2T1B/425 (RIGHT)

SUNSHINE & BRAIDS:

SUMMER'S PERFECT DUO!

IN THIS ISSUE

Spend time in the sun, not the salon! With our Original and French Curl Box Braids, DIYers can get professional-looking braids, quickly and easily.

HH-BULK 03 PRE-STRETCHED BULK NATURAL DEEP BULK 18"	BRAID 04 Twisted Up SPRINGY BOHEMIAN TWIST	BRAID 06 Twisted Up CURL PATTERN COMPARISON SPRINGY AFRO TWIST SPRINGY BOHEMIAN TWIST WATERWAVE FRO TWIST	HH-BLEND WEAVE 08 BRAZILIAN BOUTIQUE DOMINICAN CURL 18"/20"/22" VIRGIN LOOSE DEEP 18"/20"/22" VIRGIN DEEP 18"/20"/22" VIRGIN BODY 26"/28"/30" VIRGIN VOLUME PRESSED 26"/28"/30" VIRGIN SLEEK PRESSED 26"/28"/30"
HH-BLEND WEAVE 09 BRAZILIAN BOUTIQUE NATURAL FRENCH 18"/20"/22" VIRGIN SLEEK PRESSED 18"/20"/22" VIRGIN BODY 18"/20"/22"	MULTI BLEND BUNDLE 10 Batik PREMIUM MULTI BLEND STRAIGHT 18"/20"/22" BODY 18"/20"/22" DEEP 18"/20"/22"	MULTI BLEND BUNDLE 11 Batik PREMIUM MULTI BLEND ATTENTION WAVE 20"/22"/24" NEESHA NATURAL YAKI 18"/20"/22"	BRAID 12 Twisted Up ORIGINAL BOX BRAID 18" 3X ORIGINAL BOX BRAID 24" 3X ORIGINAL BOX BRAID 30" 3X
BRAID 14 Twisted Up BOX BRAID FRENCH CURL 22" 3X INFINITY LOCS 32"	LACE WIG 16 PERFECT HAIRLINE 13X4 IMANI	LACE WIG 17 melted HAIRLINE LACE FRONT WIG MARTISHA	LACE WIG 18 COLOR BOMB MIRAJ
LACE WIG 20 Lace front TEYONA EVALINA	LACE PART WIG 21 THE DAILY WIG LACE PART WIG JUSTINE	FULL WIG 22 wipop SYNTHETIC FULL WIG MADDOX CALI	FULL WIG 23 wipop SYNTHETIC FULL WIG Style SELECTS MARILEE
HALF WIG 24 Quick WEAVE LYRICA ALEENA	PONYTAIL 26 Pretty Quick PREMIUM SYNTHETIC FIBER PONY KAJO	CATALOG 27 PONYTAIL COLLECTION	

My
TRESSES
100% UNPROCESSED HUMAN HAIR

GOLD LABEL

PRE-STRETCHED

100% UNPROCESSED HUMAN HAIR BULK

9+ QUALITY GRADE BUNDLE HAIR
DYE & CUSTOMIZE

MyTresses Gold Label Pre-Stretched Bulk is back with a NEW Natural Deep style.

- 100% Unprocessed Human Hair
- 9+ Quality Grade Bundle Hair
- Comfortable, Itch-Free Wear
- Pre-Stretched & Gentle on Fingers
- Soft on Skin & Lightweight

PRE-STRETCHED NATURAL DEEP BULK 18"

AVAILABLE COLORS : NATURAL, NATURAL BLACK



X-Pression
Twisted Up[®]

100% KANEKALON FIBER

SPRINGY BOHEMIAN TWIST

A NEW TWIST FOR NEW STYLES

Springy Bohemian Twist has everything braiders love about Springy Afro Twist but with looser curls and a little less texture to unlock even more style options!

SPRINGY BOHEMIAN TWIST



STYLE & COLOR SHOWN:
SPRINGY BOHEMIAN TWIST 30" | DRAGON FRUIT

← SMALLER CURL

MEDIUM

→ BIGGER CURL

Never Pick the Wrong Hair Again



4C



4A



3C

SPRINGY AFRO TWIST

SPRINGY BOHEMIAN TWIST

WATERWAVE FRO TWIST

MIX & MATCH

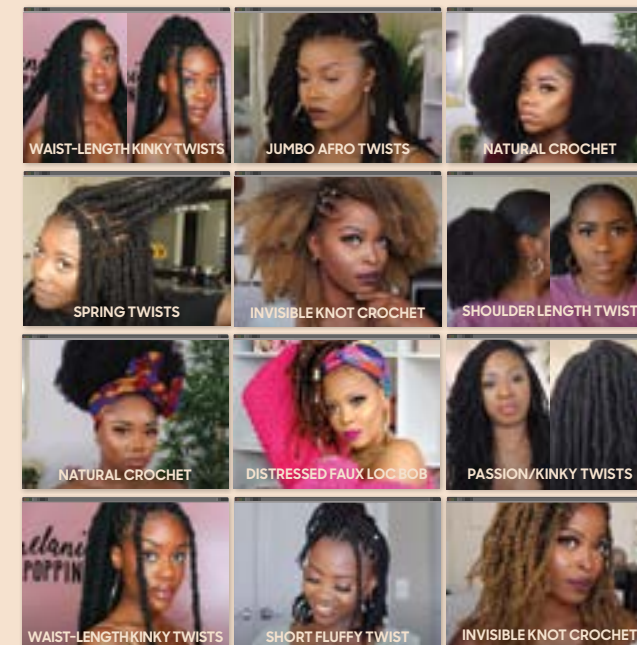
THE HAIR THAT DOES IT ALL
Crochet, ponytails, twists and more. It's up to you how you twist it up.



Made to mimic 4C tight curls. It has medium sheen, and lots of volume. Creates classic, spring twists; voluminous, kinky ponytails; highly-textured faux locs and more! 4c hair type.

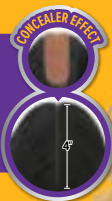
Springy Bohemian Twist has more texture than Waterwave Fro Twist, and looser curls than Springy Afro Twist. These 4A curls are voluminous and silky with a hint of texture. Creates slightly textured Passion Twist, locs with sheen and endless additional styles. 4A hair type.

For small, defined 3C waves with a natural sheen, select Waterwave Fro Twist. Like the classic waterwave style, but pre-fluffed, and with a touch of texture added. Creates passion locs with a bit more sheen, Passion Twists that features less springiness and less volume than Springy Afro Twist.



premium purple pack
BRAZILIAN BOUTIQUE
100% HUMAN HAIR PREMIUM BLEND

4" DEEP LACE PARTING PIECE



Slay and stay on budget all summer long with the various curly, wavy, textured and silky styles from Brazilian Boutique.

- 100% Human Hair Premium Blend
- 4" Deep Lace Closure
- Pre-Plucked Closure with Natural Baby Hair
- 3 Full Bundles
- Curling Iron Safe
- Tangle-Free & Shed-Free



New

COLOR SHOWN : DR27

DOMINICAN CURL
18"/ 20"/ 22"

AVAILABLE STYLES & LENGTHS :
DOMINICAN CURL 18"/ 20"/ 22", VIRGIN LOOSE DEEP 18"/ 20"/ 22", VIRGIN VOLUME PRESSED 18"/ 20"/ 22", 26"/ 28"/ 30"
VIRGIN SLEEK PRESSED 18"/ 20"/ 22", 26"/ 28"/ 30", VIRGIN BODY 18"/ 20"/ 22", 26"/ 28"/ 30", VIRGIN DEEP 18"/ 20"/ 22"

AVAILABLE COLORS :
DOMINICAN CURL, VIRGIN LOOSE DEEP, VIRGIN DEEP : JET BLACK, NATURAL BLACK, NATURAL BROWN, 950, DR27, DR30, DR425, DR27613, DRRED
VIRGIN VOLUME PRESSED, VIRGIN SLEEK PRESSED, VIRGIN BODY : JET BLACK, NATURAL BLACK, NATURAL BROWN, DR27, DR30, DR425, DR27613



COLOR SHOWN : DR425

COLOR SHOWN : DR30

VIRGIN LOOSE DEEP
18"/20"/22"

VIRGIN VOLUME PRESSED
26"/28"/30"



COLOR SHOWN : DR27

COLOR SHOWN : DR425

COLOR SHOWN : NATURAL BROWN

VIRGIN SLEEK PRESSED
26"/28"/30"

VIRGIN BODY
26"/28"/30"

VIRGIN DEEP
18"/20"/22"



COLOR SHOWN : DR27613

VIRGIN SLEEK PRESSED
18"/20"/22"



COLOR SHOWN : DR30

VIRGIN BODY
18"/20"/22"



COLOR SHOWN : DR425

NATURAL FRENCH
18"/ 20"/ 22"

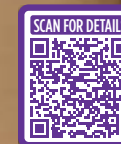
premium purple pack
BRAZILIAN BOUTIQUE
100% HUMAN HAIR PREMIUM BLEND

4"x4" HD HAND-TIED LACE CLOSURE



Turn heads while staying on budget with the new Natural French, Virgin Sleek Pressed and Virgin Body bundles that come with matching 4x4 closures!

- 100% Human Hair Premium Blend
- Free 4"x4" HD Hand-Tied Lace Closure
- Pre-Plucked Closure with Natural Baby Hair
- 3 Full Bundles
- Curling Iron Safe
- Tangle-Free & Shed-Free

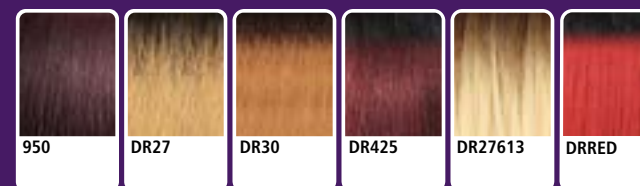


New

AVAILABLE STYLES :
NATURAL FRENCH 18"/ 20"/ 22",
VIRGIN BODY 18"/ 20"/ 22",
VIRGIN SLEEK PRESSED 18"/ 20"/ 22"

AVAILABLE COLORS :
JET BLACK, NATURAL BLACK,
DR27, DR30, DR425, DR27613, DRRED

SPECIAL COLORS





Batik®

PREMIUM MULTI BLEND

**3 pcs Multi Pack +
4X4 HD Lace Closure!**

Get Straight, Body and Deep for just the right price and with a free 4x4 HD Lace Closure.

Look your best with Batik! Choose from Attention Wave and Neesha Natural, both packaged with a versatile 4"x4" closure.



COLOR SHOWN : NATURAL BLACK

DEEP
18"/20"/22"



COLOR SHOWN : NATURAL BLACK

BODY
18"/20"/22"



COLOR SHOWN : DR27

STRAIGHT
18"/20"/22"



COLOR SHOWN : NATURAL BLACK

NEESHA NATURAL YAKI
18"/20"/22"



COLOR SHOWN : DR30

ATTENTION WAVE
20"/22"/24"

NEW

NEW

KEY FEATURES

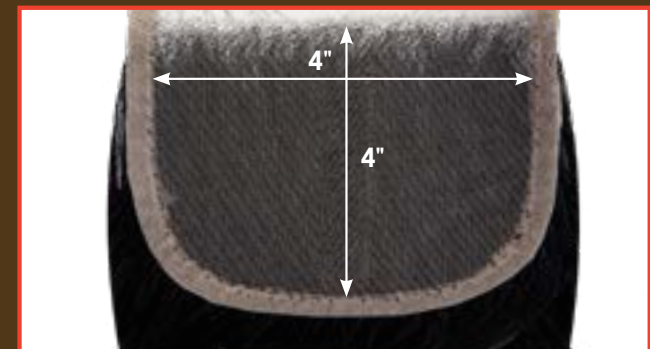
- Premium Multi-Blend
- Free 4"x4" HD Hand-Tied Lace Closure
- 3 Full Bundles
- Tangle-Free & Shed-Free
- Heat Styling Safe - Up to 400°

AVAILABLE COLORS

JET BLACK, NATURAL BLACK,
27, 30, 613, DR27, DR30

1 PACK SOLUTION

4" x 4" Free HD LACE CLOSURE





COLOR SHOWN : 2T1B/425



COLOR SHOWN : 2T1B/27



COLOR SHOWN : 2T1B/30

Twisted Up®

ORIGINAL BOX BRAID 18" / 24" / 30" 3X

Create fast, professional-looking Box Braids with a natural tapered end for the perfect finish.

- Premium Synthetic Fiber
- Quick, Long Lasting Protective Style
- Soft Texture
- Lightweight, Low Frizz
- 100% Handcrafted
- Non Flammable

30"

24"

18"



ORIGINAL BOX BRAID 18" 3X

ORIGINAL BOX BRAID 24" 3X

ORIGINAL BOX BRAID 30" 3X

AVAILABLE COLORS :

1, 1B, 2, 4, 613, 2T1B/27, 2T1B/30, 2T1B/425, MACCHIATO, DRAGON FRUIT

SPECIAL COLORS



2T1B/27

2T1B/30

2T1B/425

MACCHIATO

DRAGON FRUIT



LIGHTWEIGHT

Twisted Up®

BOX BRAID FRENCH CURL 22" 3X

Get Box Braids with French Curl ends for a feminine finish that's on-trend.

- Made with 100% Premium Synthetic Fiber
- Quick, Long-Lasting Protective Style
- Easy to Maintain & Manage
- Soft Texture & Lightweight



COLOR SHOWN : 2T1B/30



LIGHTWEIGHT

24 STRANDS



Twisted Up®

INFINITY LOCS 32"

Hip-Length Infinity Locs and Bonita Infinity Locs are fast to install and always stylish!

- Made with 100% Premium Synthetic Fiber
- Quick, Long-Lasting Protective Style
- Easy to Maintain & Manage
- Soft Texture & Lightweight



COLOR SHOWN : 2T1B/425

NEW 32"

40"

LIGHTWEIGHT



AVAILABLE COLORS

- 1, 1B, 2, 4, 2T1B/27,
2T1B/30, 2T1B/425,
MACCHIATO,
DRAGON FRUIT

SPECIAL COLORS



2T1B/27

2T1B/30

2T1B/425

MACCHIATO

DRAGON FRUIT

SPECIAL COLORS



2T1B/27

2T1B/30

2T1B/350

2T1B/425

AVAILABLE COLORS

- 1, 1B, 2, 613,
2T1B/27, 2T1B/30,
2T1B/350, 2T1B/425

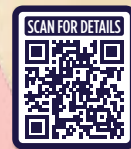


PERFECT HAIRLINE™

FULLY HAND-TIED 13"X4" LACE WIG

Volume, curls, layers and colors! Get more than you could dream up with the new Imani style.

- Fully Hand-Tied 13" x 4" Frontal
- Ear-to-Ear Soft HD Transparent Lace
- Natural Baby Hairs
- Comes With Pre-Attached Elastic Band
- Fast, Easy & Effortless Glueless Installs
- Pre-Plucked Hairline
- Heat-Styling Friendly



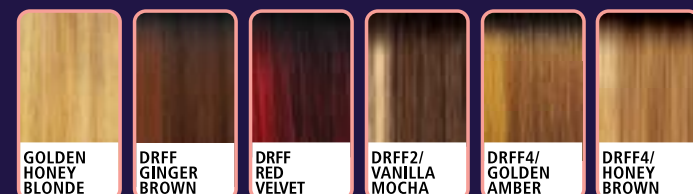
COLOR SHOWN : DRFF2/VANILLA MOCHA (TOP), DRFF4/HONEY BROWN, 1B (BOTTOM LEFT TO RIGHT)

IMANI 13" X 4" 16"

AVAILABLE COLORS

1, 1B, 2, GOLDEN HONEY BLONDE, DRFF GINGER BROWN, DRFF RED VELVET, DRFF2/VANILLA MOCHA, DRFF4/GOLDEN AMBER, DRFF4/HONEY BROWN

SPECIAL COLORS



melted HAIRLINE®

LACE FRONT WIG

Martisha matches bobs with curls to create the perfect style for the summer.

- Soft HD Transparent Lace
- 5" Deep Parting
- Completely Pre-Plucked Hairline & Sideburns
- Pre-Attached Wide Elastic Band for Secure Fit
- Fast, Easy & Effortless Glueless Installs
- Natural Baby Hairs
- Redesigned ComfortFit Ear Contour
- Heat Resistant Fiber



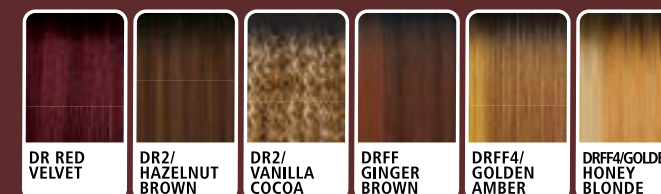
COLOR SHOWN : DR2/VANILLA COCOA (TOP), DRFF4/GOLDEN AMBER, 1B (BOTTOM LEFT TO RIGHT)

MARTISHA 14"

AVAILABLE COLORS

1, 1B, 2, DR RED VELVET, DR2/HAZELNUT BROWN, DR2/VANILLA COCOA, DRFF GINGER BROWN, DRFF4/GOLDEN AMBER, DRFF4/GOLDEN HONEY BLONDE

SPECIAL COLORS





UL1B/BLUE ANGEL



UL1B/TUSCAN SUN



UL1B/LEMON DROP



UL1B/ELECTRIC VIOLET



UL1B/CHILI RED

UL1B/RAINBOW

UL1B/PINK PUNCH

MIRAJ 42"



COLOR BOMB[®]

PREMIUM SYNTHETIC FIBERS

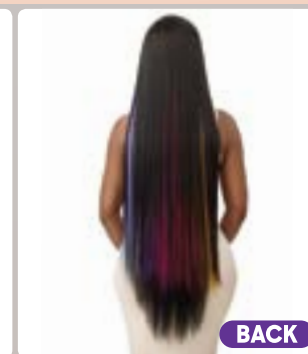
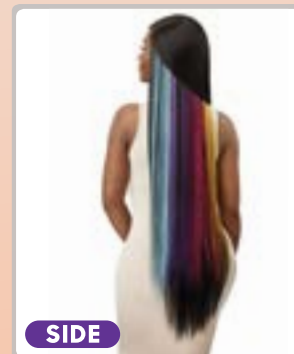
Bomb Color, #nofilter

Miraj features an unexpected blast of color with underlights in daring, yet wearable shades.

- Exclusive Salon-Inspired Underlight Colors
- Pre-Plucked HD Transparent Lace
- Natural Baby Hair
- Premium Synthetic Fibers
- Selfie-Worthy Styles
- 5" Deep Lace Parting

AVAILABLE COLORS

- 1, 1B, UL1B/BLUE ANGEL, UL1B/CHILI RED, UL1B/ELECTRIC VIOLET, UL1B/LEMON DROP, UL1B/PINK PUNCH, UL1B/RAINBOW, UL1B/TUSCAN SUN



Lace front[®]

LACE FRONT WIG

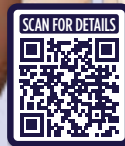
Evalina makes glamour easy with its big, soft waves in a variety of special colors.

Create a stunning impression with Teyona's sexy 26" layered look in salon-quality highlights.

- HD Transparent Lace
- Breathable, Comfortable Cap
- Natural Baby Hair
- Heat Resistant Fiber



COLOR SHOWN :
DRFF2/GINGER BROWN (TOP)
DRFF RUBY ROSE (BOTTOM)



COLOR SHOWN :
DRFF GINGER SPICE (TOP),
DRFF RED PLUM (BOTTOM)



EVALINA 20"



NATURAL BABY HAIRS

TEYONA 26"

NATURAL BABY HAIRS



AVAILABLE COLORS :

EVALINA:
1, 1B, 2, 613, DR CHOCOLATE SWIRL, DR4/TIRAMISU,
DRFF GOLDEN AMBER, DRFF RUBY ROSE, DRFF2/GINGER BROWN

TEYONA:
1, 1B, 2, 613, DR CHOCOLATE SWIRL, DRFF DUTCH COCOA,
DRFF GINGER SPICE, DRFF HONEY CREAM, DRFF RED PLUM

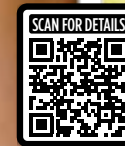


THE DAILY WIG[™]

PREMIUM SYNTHETIC FIBERS
LACE PART WIG

Justine has it all - texture, body, and a beginner-friendly lace part.

- Premium Synthetic Fibers
- Pre-Plucked & Hand-Tied Lace I-Part
- Breathable Mesh Cap
- Heat-Styling Friendly



COLOR SHOWN :
DR2/CHOCOLATE SWIRL (LEFT),
DR2/GOLDEN COPPER (RIGHT)



JUSTINE 16"



AVAILABLE COLORS :

1, 1B, 2, 613, DR2/CHOCOLATE SWIRL,
DR2/GOLDEN COPPER,
DR4/GOLDEN HONEY BLONDE,
DR4/HONEY BROWN, DRFF RED VELVET,
DRFF2/HONEY GINGER BROWN



wigpop®

SYNTHETIC FULL WIG

Maddox was made for the woman that wants a bold, budget-friendly pixie cut and color.

Chic meets convenience with Cali's pop-on-and-go, finger wave pixie style!

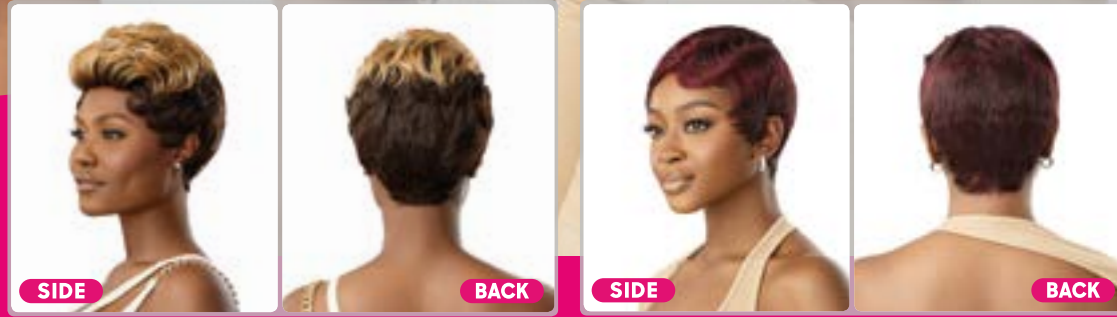
- Great Value
- Ready to Wear & Go
- Range of Trendy Colors & Styles
- Heat-Styling Friendly



COLOR SHOWN:
DRB4/HONEY AMBER (TOP)
DRB GINGER SPICE (BOTTOM)



BRUSHED OUT
COLOR SHOWN:
HT RED VELVET (TOP),
DBH SANDY BLONDE (BOTTOM)



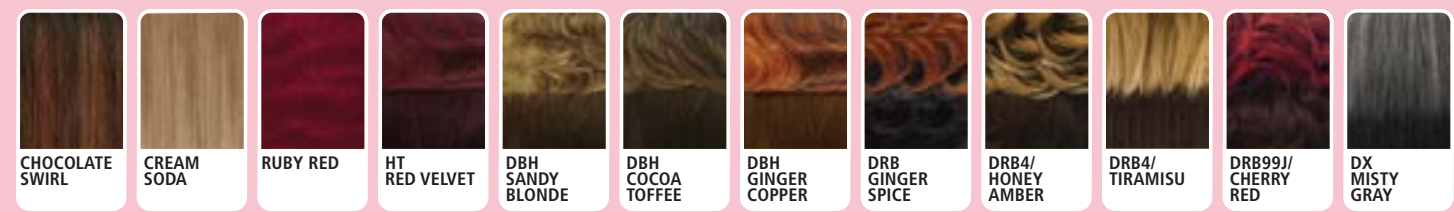
MADDOX

CALI

AVAILABLE COLORS : **MADDOX** : 1, 1B, 2, CHOCOLATE SWIRL, CREAM SODA, DRB GINGER SPICE, DRB4/HONEY AMBER, DRB4/TIRAMISU, DRB99J/CHERRY RED, DX MISTY GRAY

CALI : 1, 1B, 2, 4, 27, RUBY RED, HT RED VELVET, DBH SANDY BLONDE, DBH COCOA TOFFEE, DBH GINGER COPPER

SPECIAL COLORS



wigpop®

SYNTHETIC FULL WIG



Inspired by social media, Marilee's layered look with blunt bangs is sure to please your trendiest customers!

- Easy to Wear, Elevated Looks
- Special Styles: More Curls, More Textures, More Length
- Ready to Wear & Go
- Heat-Styling Friendly

COLOR SHOWN:
CR WINE COPPER (LEFT), DR HAZELNUT BLONDE (RIGHT)



MARILEE 28"



AVAILABLE COLORS

1, 1B, 2, 613, CR WINE COPPER, DR CHERRY RED, DR CHOCOLATE SWIRL, DR HAZELNUT BLONDE, DR HAZELNUT BROWN, DR2/BL SANDY BLONDE

SPECIAL COLORS



Quick WEAVE®

Install this summery look in a flash! With the Lyrica half wig, you can skip lace tinting, cutting and gluing completely!

Get the realest hairline with Aleena. Blend this half wig's curls with your leave out and go!

- Natural Texture & Volume
- New Cap Lays Flatter
- High Heat Resistant Fiber
- Easy to Wear Styles
- Less Leave Out Required



COLOR SHOWN :
1B (LEFT),
DR HONEY AUBURN (RIGHT)



COLOR SHOWN :
1B (TOP),
DRFF2/HONEY GINGER BROWN (BOTTOM)



LYRICA 12"

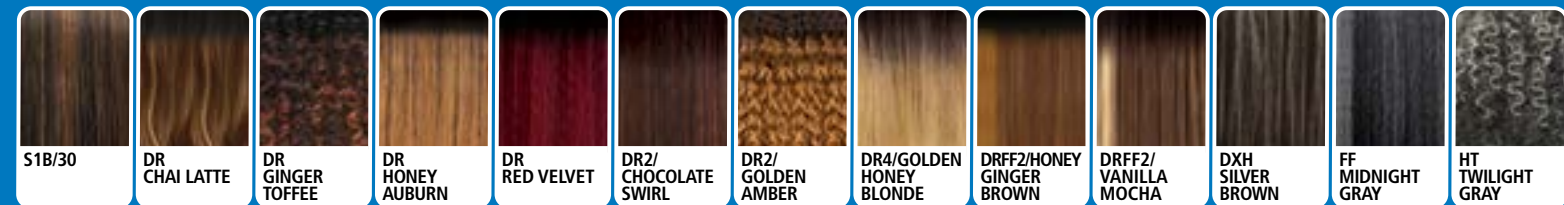
ALEENA 20"

AVAILABLE COLORS :

LYRICA : 1, 1B, 2, S1B/30, DR GINGER TOFFEE, DR HONEY AUBURN, DR RED VELVET, DR2/CHOCOLATE SWIRL, DXH SILVER BROWN, FF MIDNIGHT GRAY, HT TWILIGHT GRAY

ALEENA : 1, 1B, 2, 4, DR CHAI LATTE, DR RED VELVET, DR2/GOLDEN AMBER, DR4/GOLDEN HONEY BLONDE, DRFF2/HONEY GINGER BROWN, DRFF2/VANILLA MOCHA

SPECIAL COLORS



Pretty Quick™

PREMIUM SYNTHETIC FIBER

PONY

Kajo's drawstring construction makes this afro, coily style a snap! A perfect ponytail couldn't be easier to achieve.

- Natural Look & Soft Texture
- Quick & Easy Styling
- Lightweight Drawstring Construction
- Premium Synthetic Fiber



COLOR SHOWN:
1B (LEFT) & DR GINGER TOFFEE (RIGHT)



KAJO 10"

SPECIAL COLORS



AVAILABLE COLORS

- 1, 1B, 2, FT1B/30,
DR CHAI LATTE,
DR DRAGON FRUIT,
DR GINGER TOFFEE,
DR HONEY AUBURN,
DR2/GOLDEN AMBER

Outre®

PONYTAIL COLLECTION



Pretty Quick
PONY

Quick PONY

Pretty Quick
PREMIUM SYNTHETIC FIBER
BANG & PONY

Quick PONY
Bang xpony

Quick PONY
Bang xbur

Pretty Quick
PREMIUM SYNTHETIC FIBER
BUN & BANG

Pretty Quick
PREMIUM SYNTHETIC FIBER
BANG

Pretty Quick
PREMIUM SYNTHETIC FIBER
WRAP PONY

Lil LOOKS
100% PREMIUM SYNTHETIC FIBER
DRAWSTRING PONYTAIL

Lil LOOKS®

100% PREMIUM SYNTHETIC FIBER

DRAWSTRING PONYTAIL



- Kid-Friendly Styles, Lengths and Sizes
- Easy to Blend, Wear and Style
- Soft, Natural Textures & Lightweight
- Adjustable Drawstring
- Made with 100% Premium Synthetic Fiber



SPRINGY COILS 8"

COLOR SHOWN : 1B (LEFT), 2T1/30 (RIGHT)



COLOR SHOWN : 1B



COLOR SHOWN : 1B



COLOR SHOWN : 1B

BEADED BOX BRAIDS 12"

BRIA

BEADED TWISTS 12"



COLOR SHOWN : 1B



COLOR SHOWN : 2T1B/30



COLOR SHOWN : 1B

COILY PUFF

DUO PUFFS

GOLD ACCENTED NATURAL WAVE 12"



COLOR SHOWN : 1B



COLOR SHOWN : 1B



COLOR SHOWN : 1B

GOLD CUFFED BOMB TWISTS 12"

MINI COILY PUFF

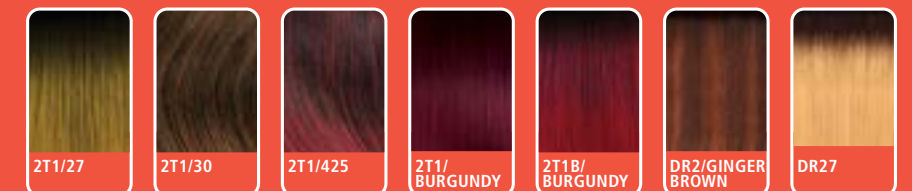
MINI DUO PUFFS

AVAILABLE COLORS :
 BEADED BOX BRAIDS 12", BEADED TWISTS 12", GOLD ACCENTED NATURAL WAVE 12", GOLD CUFFED BOMB TWISTS 12", SPRINGY COILS 8" :
 1, 1B, 2, 4, 2T1/27, 2T1/30, 2T1/BURGUNDY

BRIA : 1, 1B, 2, 4, 2T1/425, DR27, DR2/GINGER BROWN

COILY PUFF, DUO PUFFS, MINI COILY PUFF, MINI DUO PUFFS : 1, 1B, 2, 4, 2T1/27, 2T1/30, 2T1B/BURGUNDY

SPECIAL COLORS





SPECIAL COLORS



AVAILABLE COLORS :

AFRO SMALL : 1, 1B, 2, 4, 2T1/30, 2T1/60, 2T1/27613, 2T1/BURGUNDY
AFRO LARGE, AFRO MEDIUM : 1, 1B, 2, 4, 2T1/30, 2T1/27613, 2T1/BURGUNDY
ANI, MIMI 20" : 1, 1B, 2, 4, S1B/30, S1B/33, S4/27, S4/30, S6/27, S6/30, S16/22, S18/22, S22/27
CURLY PUFF : 1, 1B, 2, S1B/30, DR CHAI LATTE, DR GINGER TOFFEE, DR RED VELVET, DR2/CHOCOLATE SWIRL
ELU, ELVITA : 1, 1B, 2, DR RED VELVET, DR2/CHOCOLATE SWIRL, DR4/GINGER BROWN, DR4/HONEY BROWN, DR4/MUSHROOM BLONDE
GIA, MIRI : 1, 1B, 2, 4, 44, 280, 2T1/27, 2T1/30, 2T1B/350, 2T1B/BURGUNDY, S1B/30
INES, SAANA : 1, 1B, 2, DR CHAI LATTE, DR GINGER TOFFEE, DR RED VELVET, DR2/CHOCOLATE SWIRL, DR2/HONEY BROWN, DR4/GOLDEN HONEY BLONDE

KAJO : 1, 1B, 2, FT1B/30, DR CHAI LATTE, DR DRAGON FRUIT, DR GINGER TOFFEE, DR HONEY AUBURN, DR2/GOLDEN AMBER
MAHINA : 1, 1B, 2, 613, DR GINGER BROWN, DR RED VELVET, DR2/CHOCOLATE SWIRL, DR2/GOLDEN AMBER, DR4/GOLDEN HONEY BLONDE, DR4/HONEY BROWN
MIMI 20" : 1, 1B, 2, 4, S1B/30, S1B/33, S4/27, S4/30, S6/27, S6/30, S16/22, S18/22, S22/27
MIMI 24" : 1, 1B, 2, 4, LT1/30, LT1B/2730, LT1B/BURGUNDY, S1B/30, S4/30
MONET : 1, 1B, 2, 4, S1B/30, S1B/33, S4/27, S4/30
NENE : 1, 1B, 2, 4, S1B/30, S1B/33, S4/27, S4/30
NENE 18 : 1, 1B, 2, 4, S1B/30, S1B/33, S4/30
NADIRAH 32" : 1, 1B, 2, 2T1/27, 2T1/30, S1B/30, DR RED BURGUNDY, DR1B/DARK TEAL, DR1B/ROSE GOLD, DR1B/SMOKE GRAY

Pretty Quick
PREMIUM SYNTHETIC FIBER
PONY



SHAYLA 36"

COLOR SHOWN : 1B



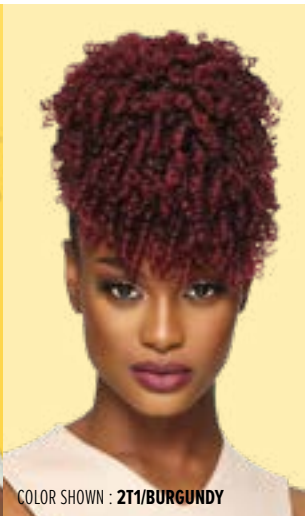
TAJO 16"

COLOR SHOWN : DR DRAGON FRUIT



CUTIE

COLOR SHOWN : 2T1/30



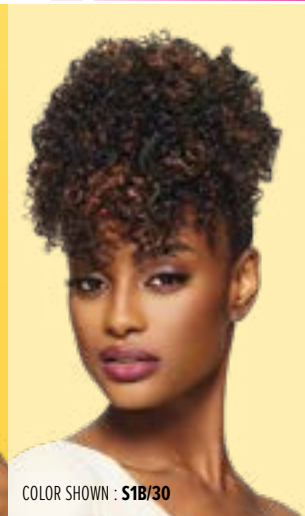
HOTTIE

COLOR SHOWN : 2T1/BURGUNDY



SOFTIE

COLOR SHOWN : 1B



SWEETIE

COLOR SHOWN : S1B/30

Pretty Quick

PREMIUM SYNTHETIC FIBER

PONY

PINEAPPLE ponytail



VANNA 20"

COLOR SHOWN : S1B/30



NEESHA BODY 16"

COLOR SHOWN : DR2/CINNAMON SPICE



NEESHA BODY WAVE 18"

COLOR SHOWN : DR2/HAZELNUT



BEACH WAVE 28"

COLOR SHOWN : DR HAZELNUT BROWN



AFRO PUFF DUO LARGE

COLOR SHOWN : 1B



AFRO PUFF DUO SMALL

COLOR SHOWN : 1B



AFRO PUFF XL

COLOR SHOWN : 1B

Quick PONY



DEEP CURL 24"

COLOR SHOWN : 1B



DEEP TWIST 22"

COLOR SHOWN : 1B



DEEP WAVE 20"

COLOR SHOWN : 1B



NATURAL WAVE 22"

COLOR SHOWN : 1B



KAY

COLOR SHOWN : 1B



NIKKA

COLOR SHOWN : 2T1/30



PALOMA

COLOR SHOWN : 2T1/30



TOYA

COLOR SHOWN : 2T1/30

AVAILABLE COLORS :

SHAYLA 36" : 1, 1B, 2, 613, S1B/30, DR2/CINNAMON WINE, DR2/GOLDEN AMBER, DR2/TIRAMISU
TAJO 16" : 1, 1B, 2, FT1B/30, DR CHAI LATTE, DR DRAGON FRUIT, DR GINGER TOFFEE, DR HONEY AUBURN, DR2/GOLDEN AMBER
VANNA 20" : 1, 1B, 2, 4, S1B/30, S1B/33, S4/27, S4/30
BEACH WAVE 28", **DEEP CURL 24"** : 1, 1B, 2, 4, F4/30, DR GINGER BROWN, DR HAZELNUT BROWN, DR HONEY BROWN, DR MULLED WINE
NEESHA BODY 16", **NEESHA BODY WAVE 18"** : 1, 1B, 2, DR BLACK CHERRY, DR SIENNA COPPER, DR2/CINNAMON SPICE, DR2/HAZELNUT, DR2/HONEY BROWN
DEEP TWIST 22", **DEEP WAVE 20"**, **NATURAL WAVE 22"** : 1, 1B, 2, CHOCOLATE SWIRL, DRST HONEY BROWN, DR2/CINNAMON WINE, DR2/GINGER BROWN, DR2/GOLDEN AMBER

AVAILABLE COLORS :

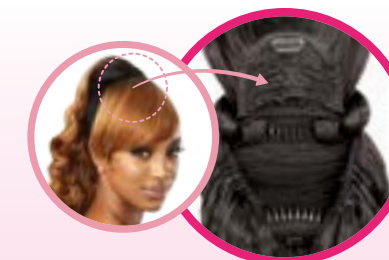
CUTIE, HOTTIE, SOFTIE : 1, 1B, 2, 4, 950, 2T1/30, 2T1/BURGUNDY, S1B/30, S4/30
SWEETIE : 1, 1B, 2, 4, 2T1/30, 2T1/BURGUNDY, S1B/30, S4/30
AFRO PUFF DUO LARGE, AFRO PUFF DUO SMALL, AFRO PUFF XL : 1, 1B, 2, 4, 2T1/30, 2T1/BURGUNDY, S1B/30, S4/27
KAY, NIKKA, PALOMA, TOYA : 1, 1B, 2, 4, 950, 2T1/30, 2T1/425, S1B/30, S4/30



Pretty Quick™

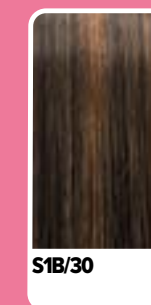
PREMIUM SYNTHETIC FIBER

BANG X PONY



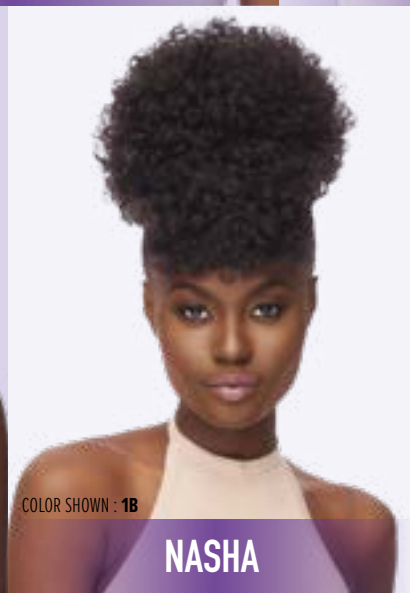
- *Clip-On Bangs + Drawstring Construction*
- *Combs for Secure Hold*
- *Made with 100% Heat Resistant Fiber*

SPECIAL COLORS

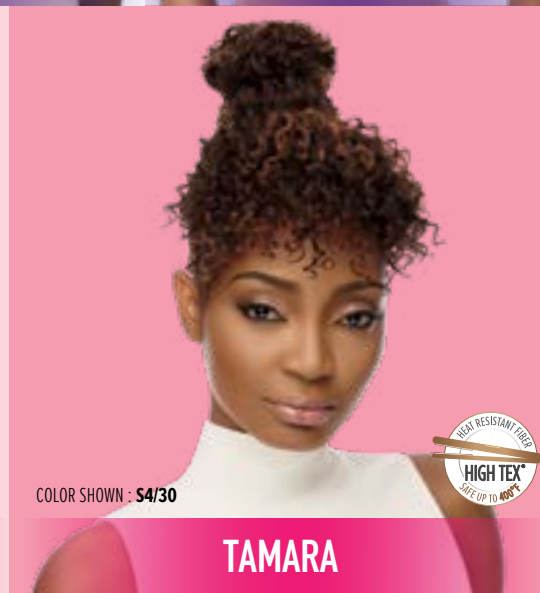


AVAILABLE COLORS :
1, 1B, 2, 613, 99J, 2T1/30, 2T1/425, DR425,
DR2730, S1B/30, S4/27

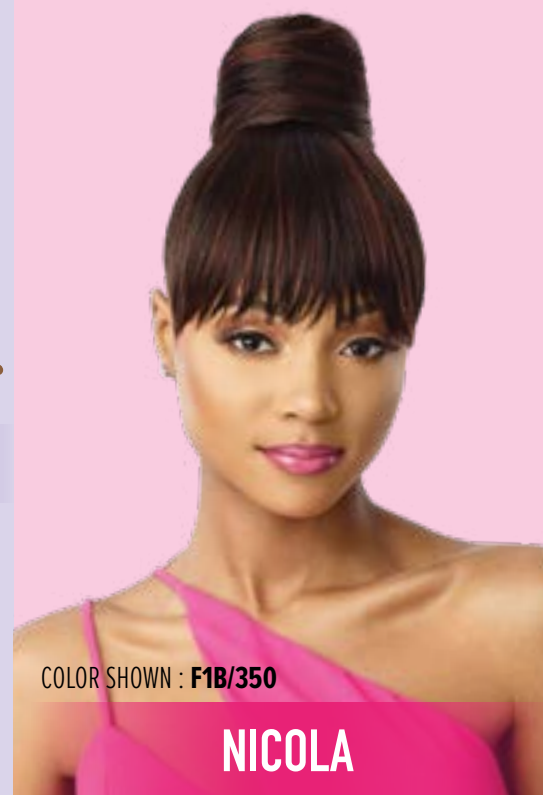
Quick PONY Bang xpony



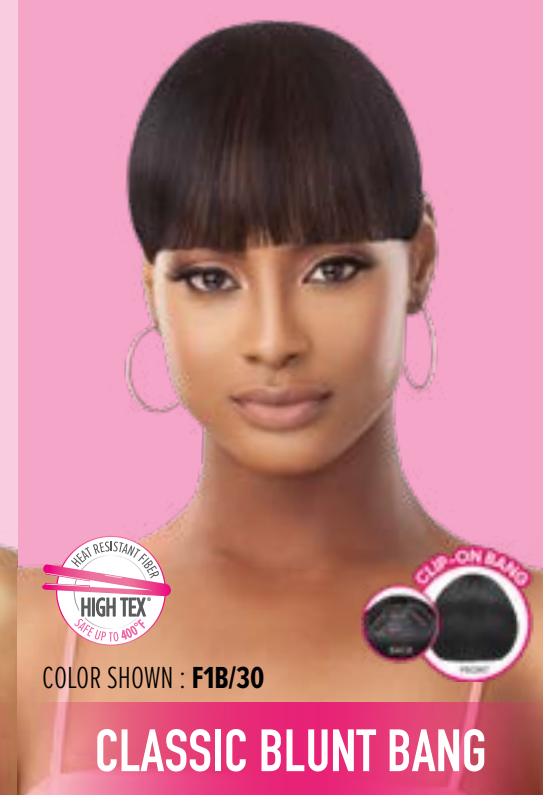
Quick PONY Bang x bun



BUN & BANG



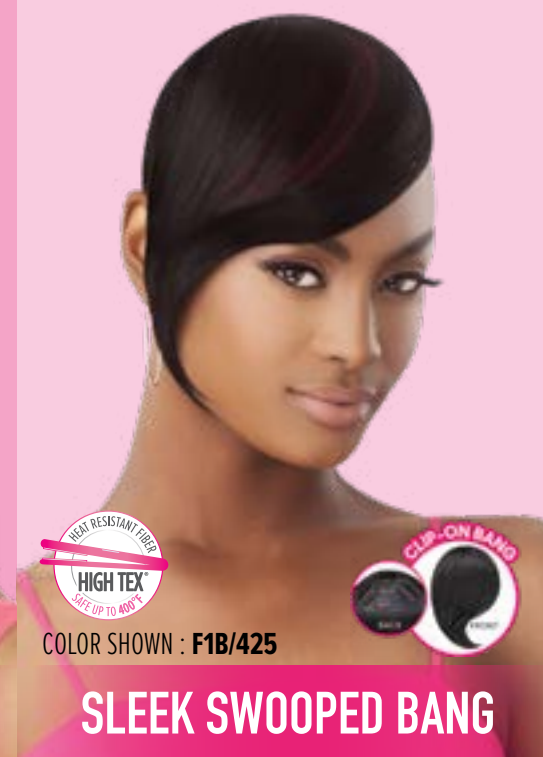
BANG



BANG



BANG



Pretty Quick™

PREMIUM SYNTHETIC FIBER

PONY

BUN & BANG



BANG



AVAILABLE COLORS :

ASTRID, INGRID : 1, 1B, 2, 613, 99J, 2T1/30, 2T1/425, DR425, DR2730, S1B/30, S4/27

CYNDI, KAYLA, NASHA, SOLANO, ESSIE, TAMARA : 1, 1B, 2, 4, 950, 2T1/27, 2T1/30, 2T1/BURGUNDY, S1B/30, S4/30

NICOLA : 1, 1B, 2, 4, 2T1/30, 2T1/BURGUNDY, F1B/30, F1B/350

CLASSIC BLUNT BANG, CRESCENT CHINA BANG, SLEEK SWOOPED BANG : 1, 1B, 2, F1B/27, F1B/30, F1B/350, F1B/425



BOHEMIAN COILS 18"



CRIMP WAVE 30"



DEEP WAVE 24"



FINGER WAVE 24"



JUMBO KINKY STRAIGHT 24"



JUMBO KINKY STRAIGHT 30"

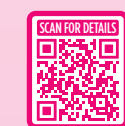


COLOR SHOWN : DR2T1B/30

Pretty Quick

PREMIUM SYNTHETIC FIBER

PONY



KINKY STRAIGHT 24"



LOOSE BODY 24"



LOOSE CURL 26"



MEDIUM BOX BRAID 26"



COLOR SHOWN : 1B

NATURAL BRAIDED PONYTAIL 32"



COLOR SHOWN : 1B

NATURAL BRAIDED PONYTAIL 42"



NATURAL WAVE 24"



SLEEK STRAIGHT 16"



SLEEK STRAIGHT 24"



SPRINGY AFRO

SPECIAL COLORS

CINNAMON WINE	DR30	DR BLUE	DR COPPER ORANGE	DR GALAXY	DR PINK	DR PURPLE	DR RAINBOW	DR2/ CINNAMON WINE	DR2/ GOLDEN AMBER	DR4/ ASH BLONDE	DR4/2730
DR2T1B/ 2730	DR2T1B/ 30	DR2T1B/ 350	S1B/30	ST HONEY BROWN	2T1/350	2T1/2730	2T1/30	2T1/ BURGUNDY	3DR COPPER GOLD	3DR FIRE SUNSET	3DR SALTED CARAMEL

AVAILABLE COLORS :

BOHEMIAN COILS 18" : 1, 1B, 2, 2T1/30, 2T1/350, 2T1/BURGUNDY, S1B/30
 CRIMP WAVE 30", DEEP WAVE 24" : 1, 1B, 613, DR COPPER ORANGE, DR4/ASH BLONDE, ST HONEY BROWN
 FINGER WAVE 24" : 1, 1B, 2, S1B/30
 JUMBO KINKY STRAIGHT 24", JUMBO KINKY STRAIGHT 30", SPRINGY AFRO : 1, 1B, 2
 KINKY STRAIGHT 24" : 3DR COPPER GOLD, 3DR FIRE SUNSET, 613L, CINNAMON WINE, DR GALAXY
 LOOSE BODY 24" : 1, 613L

LOOSE CURL 26" : 1, 1B, 613, DR4/2730, DR30, S1B/30
 MEDIUM BOX BRAID 26" : 1, 1B, 2, 2T1/30, 2T1/350, 2T1/2730, DR BLUE, DR PINK, DR PURPLE, DR RAINBOW
 NATURAL BRAIDED PONYTAIL 32" & 42", NATURAL BRAIDED FISHTAIL 42" : 1, 1B, DR2T1B/2730, DR2T1B/30, DR2T1B/350
 NATURAL WAVE 24" : 1, 613L
 SLEEK STRAIGHT 16", SLEEK STRAIGHT 24" : 1, 1B, 613, DR COPPER ORANGE, DR2/CINNAMON WINE, DR2/GOLDEN AMBER, DR4/ASH BLONDE

Outre® BULK HAIR

My®
TRESSES

100% UNPROCESSED HUMAN HAIR

GOLD LABEL

9+ QUALITY GRADE BUNDLE HAIR

PRE-STRETCHED
100% UNPROCESSED
HUMAN HAIR BULK



NATURAL
BODY BULK

NATURAL
DEEP BULK

NATURAL
STRAIGHT BULK

NATURAL 4C
KINKY BULK

W&W SPLASH CORK BULK
W&W SPLASH DEEP BULK

AVAILABLE STYLES :

NATURAL BODY BULK 18" / 24", NATURAL DEEP BULK 18", NATURAL STRAIGHT BULK 14" / 18" / 24",
NATURAL 4C KINKY BULK 12", W&W SPLASH CORK BULK 14" / 18" / 24", W&W SPLASH DEEP BULK 18" / 24"

AVAILABLE COLORS :

NATURAL BLACK, NATURAL
NATURAL BLACK, NATURAL, 27, 30, 425, DEEP PURPLE, DEEP BLUE, HOT PINK (ONLY FOR NATURAL 4C KINKY BULK)

premium
purple
pack

Brazilian
BUNDLE

100% HUMAN HAIR PREMIUM BLEND

PRE-STRETCHED
HUMAN HAIR BLEND BULK



DOMINICAN CURL BULK

LOOSE DEEP BULK

NATURAL FRENCH BULK

STRAIGHT BULK

AVAILABLE STYLES :

DOMINICAN CURL BULK 18" / 24", LOOSE DEEP BULK 18" / 24",
NATURAL FRENCH BULK 18" / 24", STRAIGHT BULK 18" / 24"

AVAILABLE COLORS :

JET BLACK, NATURAL BLACK, NATURAL, 27, 30, 425, 950