

JUNE 2024

®

Outre



STYLE & COLOR SHOWN:
SPRINGY BOHEMIAN TWIST 30" | DRAGON FRUIT

Outre
85 Oxford Drive,
Moonachie, NJ 07074
USA

**THE SECRET
TO SUMMER'S
HOTTEST STYLES:**
SPRINGY BOHEMIAN TWIST

IN THIS ISSUE

Ready to switch-up your style this summer?

Springy Bohemian Twist is must-have! It has a unique blend of features which combines the volume of Springy Afro Twist, the silkier feel of Waterwave Afro Twist with a hint of wavy texture. It transforms traditional natural styles, creating looser twists with more definition, locs with a polished but still kinky finish, and 4A crochet braids.

Take a break from your usual natural styles and shake things up with Springy Bohemian Twist.

BRAID 03 PRE-STRETCHED BRAID 52" 3X <i>X-Pression</i> NEW COLORS	BRAID 04 SPRINGY BOHEMIAN TWIST <i>X-Pression</i> Twisted Up	HH-BULK 06 ALL BULK ITEMS <i>My TRESSES</i> 100% UNPROCESSED HUMAN HAIR GOLD LABEL PRE-STRETCHED 100% UNPROCESSED HUMAN HAIR BULK	BRAID 08 BOX BRAID LOOSE WAVE 24" 3X BOHO ISLAND TWIST 22" 3X <i>X-Pression</i> Twisted Up
BRAID 10 ALL BOHO STYLES <i>X-Pression</i> Twisted Up	BRAID 12 TROPICAL BOUNCY LOCS 22" 3X <i>X-Pression</i> Twisted Up NEW COLORS	HH-WEAVE 13 PURPLE PACK YAKI 10", 12" premium purple pack 100% HUMAN HAIR NEW COLORS	HH-WEAVE 14 SINGLE PACK MULTIPACK LACE CLOSURE <i>Sugar Punch</i> 100% UNPROCESSED HUMAN HAIR
HH-FULL WIG 16 AYSEL premium DUBY WIG 100% HUMAN HAIR	HHB-LACE WIG 17 HHB-SLEEK YAKI 20" Airtied 100% FULLY HAND-TIED WIG	HHB-LACE WIG 18 HHB-GLAM CURLS 24" Outre 100% HUMAN HAIR BLEND 5x5 LACE CLOSURE WIG	LACE WIG 19 SWIRL 111 melted HAIRLINE SWIRLISTA LACE FRONT WIG
LACE WIG 20 MAXIE Lace front	LACE WIG 21 EVERY41 EveryWear LACE FRONT WIG	LACE PART WIG 22 LANIECE THE DAILY WIG LACE PART WIG	FULL WIG 23 NIECY CYRA wigpop SYNTHETIC FULL WIG
HALF WIG 24 RYANNE SABLE MIRIAM Quick WEAVE	PONYTAIL 26 BONE STRAIGHT 34" Outre Pretty Quick PREMIUM SYNTHETIC FIBER WRAP PONY	PONYTAIL 27 KINKY CURLY 12" MAVE Outre Pretty Quick PREMIUM SYNTHETIC FIBER PONY	

NEW COLORS

52"

X-Pression®

PRE-STRETCHED



Feel the icy heat of X-Pression Braid 52" in newly added colors. Mix and match our ultra-long warm blonde 27 and 1B/27, spicy brown 30, and chilly Platinum Blonde 613.

- Pre-Stretched & Pre-Layered
- Quickest Install
- Easy to Braid
- Easy to Manage
- Ultra Lightweight
- Hot Water Set Friendly
- Tangle-Free

PRE-STRETCHED BRAID 52" 3X

AVAILABLE COLORS:

1, 1B, 2, 4, 27, 30, 33, 34, 44, 51, 60, 99J, 130S, 280, 350, 425, 613, 613A, 27+30+613, AMBER, APPLE RED, BLUE, BLUE RASPBERRY, BRIGHT RED, BURGUNDY, DRAGON FRUIT, FORSYTHIA, GLOW NEON HOTPINK, GLOW NEON LEMON YELLOW, GLOW NEON ORANGE, GLOW NEON PUMPKIN, GREEN SHAKE, HOT PINK, INDIGO, LUXE BLUE, MINT VIBES, MOODY SKY BLUE, OLIVE, PARTY PUNCH, PUMPKIN SPICE, PURPLE, PURPLE RAIN, RASTA, ROSE GOLD, SHOCKING PINK, SKY BREEZY, SILVER GRAY, SMOKEY LILAC, SUN FLOWER, SWEDISH BLONDE, UNICORN, VIOLET, 2T1B/130S, 2T1B/27, 2T1B/2730, 2T1B/27613, 2T1B/30, 2T1B/33, 2T1B/350, 2T1B/60, 2T1B/BLUE, 2T1B/BURGUNDY, 2T1B/FORSYTHIA, 2T1B/INDIGO, 2T1B/LUXE BLUE, 2T1B/MINT VIBES, 2T1B/OLIVE, 2T1B/PURPLE, 2T1B/ROSE GOLD, 2T1B/SHOCKING PINK, 2T1B/SILVER GRAY, M1B/27, M1B/30, M1B/350, M1B/425, M4/30, M4/27/30, M4/27/613, M4/27/30/613, M27/613, M27/30/613, M27/30, M950/425/350/130S

TWISTED UP COMPARE & PICK THE RIGHT STYLE



SPRINGY AFRO TWIST



SPRINGY BOHEMIAN TWIST



WATERWAVE FRO TWIST



4C



4A



3C

SMALLER CURL

MEDIUM

BIGGER CURL

BOHO STYLE

WITH WATERWAVE FRO TWIST +MYTRESSES GOLD BULK HAIR



Influencer, Hairscope, mixed and matched Outre products to create this hip-length, beautiful Boho style. But there's more than just one Boho look! With X-Pression, Twisted Up, and MyTresses Gold Bulk Hair, professional and DIY braiders can create them all.

X-Pression Twisted Up WATERWAVE FRO TWIST 22" 2X



My TRESSES 100% UNPROCESSED HUMAN HAIR GOLD LABEL BULK PRE-STRETCHED 100% UNPROCESSED HUMAN HAIR BULK



SPRINGY BOHEMIAN TWIST

LOC IT. LOOP IT. TWIST IT. LOVE IT!

MEET THE NEW CURL FROM TWISTED UP



STYLE & COLOR SHOWN : SPRINGY BOHEMIAN TWIST 30" | 4 • MACCHIATO



COLOR SHOWN : T1B/30

NATURAL DEEP BULK
10", 12", 14", 18", 22", 24"

AVAILABLE LENGTHS
10", 12", 14", 18", 22", 24"
AVAILABLE COLORS
NATURAL BLACK, NATURAL, 27, 30, 425, T1B/27, T1B/30, T1B/425



LOOSE DEEP BULK 18"

AVAILABLE COLORS
NATURAL BLACK, NATURAL, 27, 30, 425, T1B/27, T1B/30, T1B/425



NATURAL 4C KINKY BULK 12"

AVAILABLE COLORS
NATURAL, NATURAL BLACK, 27, 30, 425, DEEP BLUE, DEEP PURPLE, HOT PINK



COLOR SHOWN : NATURAL BLACK

W&W SPLASH CORK BULK 14", 18", 24"

AVAILABLE LENGTHS
14", 18", 24"
AVAILABLE COLORS
NATURAL, NATURAL BLACK



NATURAL STRAIGHT BULK 14", 18", 24"

AVAILABLE LENGTHS
14", 18", 24"
AVAILABLE COLORS
NATURAL, NATURAL BLACK



NATURAL BODY BULK 18", 24"

AVAILABLE LENGTHS
18", 24"
AVAILABLE COLORS
NATURAL, NATURAL BLACK



GYPSY WAVE BULK 18", 24"

AVAILABLE LENGTHS
18", 24"
AVAILABLE COLORS
NATURAL, NATURAL BLACK



COLOR SHOWN : NATURAL BLACK

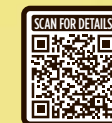
W&W SPLASH DEEP BULK 18", 24"

AVAILABLE LENGTHS
18", 24"
AVAILABLE COLORS
NATURAL, NATURAL BLACK

My TRESSES
100% UNPROCESSED HUMAN HAIR
GOLD LABEL

BULK
PRE-STRETCHED
100% UNPROCESSED HUMAN HAIR BULK

Unprocessed. Top Quality. Pre-Stretched. And the perfect pick for your next boho look.



- 100% Unprocessed Human Hair
- Pre-Stretched & Gentle on Fingers
- 9+ Quality Grade Bundle Hair
- Soft on Skin & Lightweight
- Comfortable, Itch-Free Wear
- Dye & Customize

AVAILABLE COLORS





X-Pression® Twisted Up®

Feel like a beauty queen in our Box Braid Loose Waves 24" style.

- Made with 100% Premium Synthetic Fiber
- Quick, Long Lasting Protective Style
- Soft texture
- Lightweight
- 100% Handcrafted
- Nonflammable

COLOR SHOWN : CT/COPPER ORANGE



BOX BRAID LOOSE WAVE 24" 3X

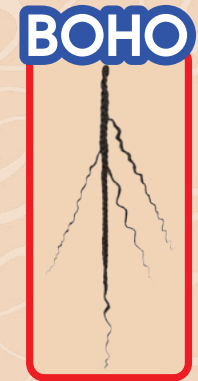


AVAILABLE COLORS
1, 1B, 2, 4, CT/27, CT/30, CT/425, CT/COPPER ORANGE, CT/DAGON FRUIT, CT/MACCHIATO



X-Pression® Twisted Up®

Did you book a last minute vacation? Boho Island Twist is the fast, DIY-style for your next getaway!



- Made with 100% Premium Synthetic Fiber
- Quick, Long Lasting Protective Style
- Soft texture
- Lightweight

COLOR SHOWN : CT/27



BOHO ISLAND TWIST 22" 3X



AVAILABLE COLORS
1, 1B, 2, 4, CT/27, CT/30, CT/425, CT/COPPER ORANGE, CT/DAGON FRUIT, CT/MACCHIATO



BOHO CRUSH LOCS 12"

AVAILABLE COLORS
1, 1B, 2, 4, 2T1B/27, 2T1B/30, 2T1B/425

SCAN FOR DETAILS

COLOR SHOWN : 2T1B/30

BOHO CRUSH LOCS 20"

AVAILABLE COLORS
1, 1B, 2, 4, 2T1B/27, 2T1B/30, 2T1B/425

SCAN FOR DETAILS

COLOR SHOWN : 2T1B/30

BOHO WAVY BOMB TWIST 10" 2X

AVAILABLE COLORS
1, 1B, 2, 4, 2T1B/27, 2T1B/30, DRAGON FRUIT, MACCHIATO

SCAN FOR DETAILS

COLOR SHOWN : DRAGON FRUIT

BOHO TROPICAL BOUNCY LOCS 20" 3X

AVAILABLE COLORS
1, 1B, 2, 4, 613, 350, DRAGON FRUIT, MACCHIATO, CT/27, CT/30, CT/350, CT/425

SCAN FOR DETAILS

COLOR SHOWN : CT/425

BOHO WAVY BOMB TWIST 20"

AVAILABLE COLORS
1, 1B, 2, 4, 51, 425, 613, 950, 2T1B/27, 2T1B/30, 2T1B/350, 2T1B/425

SCAN FOR DETAILS

COLOR SHOWN : 2T1B/30

BOHO KINKY PASSION WATERWAVE 24"

AVAILABLE COLORS
1, 1B, 2, 4, 2T1B/27, 2T1B/30, 2T1B/350, 2T1B/425, PEACH BLONDE, WHITE BLONDE

SCAN FOR DETAILS

COLOR SHOWN : 2T1B/30

BOHO PASSION WATERWAVE 24"

AVAILABLE COLORS
1, 1B, 2, 4, 2T1B/27, 2T1B/30, 2T1B/350, 2T1B/425, PEACH BLONDE, WHITE BLONDE

SCAN FOR DETAILS

COLOR SHOWN : 2T1B/425

BOHO TROPICAL ISLAND LOCS 20" 3X

AVAILABLE COLORS
1, 1B, 2, 4, 613, 350, DRAGON FRUIT, MACCHIATO, CT/27, CT/30, CT/350, CT/425

SCAN FOR DETAILS

COLOR SHOWN : CT/350

BOHO SPRING MERMAID LOCS 18" 3X

AVAILABLE COLORS
1, 1B, 2, 4, 2T1B/30, 2T1B/350, DRAGON FRUIT, MACCHIATO

SCAN FOR DETAILS

COLOR SHOWN : DRAGON FRUIT

BOHO PASSION SUMMER TWIST 10" 2X

AVAILABLE COLORS
1, 1B, 2, 4, 2T1B/27, 2T1B/30, DRAGON FRUIT, MACCHIATO

SCAN FOR DETAILS

COLOR SHOWN : MACCHIATO

ORIGINAL BOHO GODDESS LOCS 24" 3X

AVAILABLE COLORS
1, 1B, 2, 4, 2T1B/27, 2T1B/30, CT/27, CT/30, CT/350, CT/425, DRAGON FRUIT, MACCHIATO

SCAN FOR DETAILS

COLOR SHOWN : DRAGON FRUIT

ORIGINAL BOHO GODDESS LOCS 12" 3X

AVAILABLE COLORS
1, 1B, 2, 4, 2T1B/27, 2T1B/30, DRAGON FRUIT, MACCHIATO

SCAN FOR DETAILS

COLOR SHOWN : 2T1B/27

BOHO BOX BRAID 12" 3X

AVAILABLE COLORS
1, 1B, 2, 4, 613, 950, CT/BLUE, CT/DARK PURPLE, CT/DRAGON FRUIT, CT/HOT PINK, CT/MACCHIATO, CT/RED, CT/27, CT/30, CT/350, CT/425, CT/613

SCAN FOR DETAILS

COLOR SHOWN : CT/MACCHIATO

BOHO BOX BRAID 22" 3X

AVAILABLE COLORS
1, 1B, 2, 4, 613, 950, 3CT/1B3027, 3CT/1BR0B6, CT/27, CT/30, CT/350, CT/425, CT/42730, CT/43525, CT/613, CT/BLUE, CT/DARK PURPLE, CT/DRAGON FRUIT, CT/HOT PINK, CT/MACCHIATO, CT/RED

SCAN FOR DETAILS

COLOR SHOWN : CT/DRAGON FRUIT

BOHO BOX BRAID 32" 3X

AVAILABLE COLORS
1, 1B, 2, 4, 2T1B/27, 2T1B/30, CT/27, CT/30, CT/350, CT/425

SCAN FOR DETAILS

COLOR SHOWN : CT/350

X-Pression
Twisted Up®
100% PREMIUM SYNTHETIC FIBER

BOHO STYLES

Boho & Go! Outre's got every curl, color and texture to create turbo-speed, bohemian styles.

LIGHTWEIGHT

BOHO BOX BRAID LOOSE DEEP 28" 3X

AVAILABLE COLORS
1, 1B, 2, 4, CT/27, CT/30, CT/350, CT/425, CT/DRAGON FRUIT, CT/MACCHIATO

SCAN FOR DETAILS

COLOR SHOWN : CT/425

X-Pression[®] Twisted Up[®]

Introducing the new Tropical Bouncy Locs!
With Twisted Up, you'll never have to wear the
same look twice.

- Premium Synthetic Fiber
- Quick, Long Lasting Protective Style
- Soft Texture
- Lightweight
- 100% Handcrafted
- Nonflammable
- Mix and Match with other items
in the Twisted Up line



COLOR SHOWN : MACCHIATO

NEW COLORS



AVAILABLE COLORS
1, 1B, 2, 4, 613, 2T1B/27, 2T1B/30,
2T1B/425, CT/350, CT/613,
CT/DARK PURPLE, CT/HOTPINK,
MACCHIATO, DRAGON FRUIT

TROPICAL BOUNCY LOCS 22" 3X



premium purple pack[®]

100% HUMAN HAIR

If you love color and
texture then pick Purple
Pack Yaki! New shades
in 10" and 12" added
for a vibrant boost
to your next style.

- 100% Human Hair
- Natural Texture & Perfectly
Pairs with Purple Pack
Yaki Closures
- Tangle-Free & Shed-Free

NEW COLORS

10" 12"



3T1B/27/1B 3T1B/30/1B 3T1B/350/1B 3T1B/BU/1B 3T4/27/4 3T4/30/4

PURPLE PACK YAKI 10" | 12"

AVAILABLE COLORS
1, 130S, 1B, 2, 27, 280, 30, 33, 34, 350, 4, 44, 425, 613, 950, BURGUNDY,
C1B/30, C1B/33, C27/30, C27/30/33, C27/613, C4/27/30, C4/30, T1B/27,
T1B/2730, T1B/30, T1B/350, T1B/BURGUNDY, T1B/RED, 3T1B/27/1B,
3T1B/30/1B, 3T1B/350/1B, 3T1B/BU/1B, 3T4/27/4, 3T4/30/4



STYLE & COLOR SHOWN : PURPLE PACK YAKI 18" & 1B



MORE INFORMATION FOR OTHER BUNDLE HAIR PRODUCTS

Sugar Punch™

100% UNPROCESSED REMY HUMAN HAIR

DOUBLE DRAWN
FOR FULL, THICK ENDS
Smooth, Resilient STRANDS

KEY FEATURES

- 100% Unprocessed Remy Human Hair
- Double Drawn for Thick, Lush Ends
- One Directional Cuticles for Tangle Resistance
- Smooth, Resilient Hair & Long-Lasting Bundles
- Bleach & Dye, Wash & Reuse
- No Shedding

STRAIGHT
NATURAL

BODY
NATURAL BLACK

OCEAN
NATURAL

BOHEMIAN
NATURAL

DEEP
NATURAL BLACK

SINGLE PACK



STRAIGHT BODY DEEP OCEAN BOHEMIAN

MULTI PACK



STRAIGHT BODY

AVAILABLE LENGTHS : 10", 12", 14", 16", 18", 20", 22", 24" | AVAILABLE COLORS : NATURAL BLACK, NATURAL

4"x4" LACE CLOSURE



STRAIGHT BODY DEEP OCEAN BOHEMIAN

13"x4" LACE FRONTAL



STRAIGHT BODY

AVAILABLE LENGTHS : 10", 12", 14" | AVAILABLE COLORS : NATURAL BLACK, NATURAL



premium
DUBY[®]
WIG

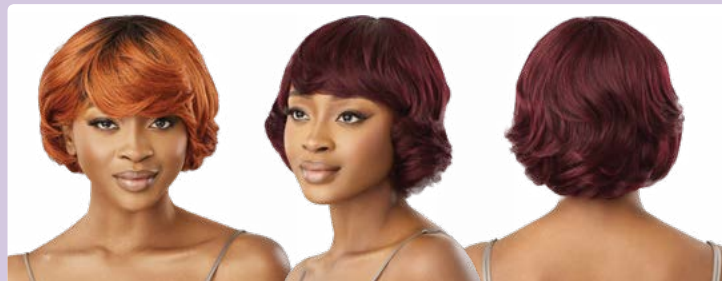
100% HUMAN HAIR

Mature women will swoon over HH-Aysel's bob featuring swooped bangs and subtle bumped volume.

- 100% Premium Human Hair
- A Variety of Classic Styles and Color Options
- Affordable
- Durable and Long Lasting

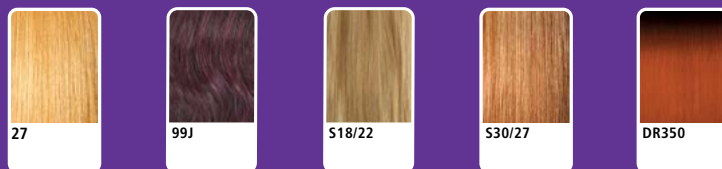
COLOR SHOWN : 99J

HH-AYSEL



COLOR SHOWN : DR350, 99J, 99J (LEFT TO RIGHT)

AVAILABLE COLORS
1, 1B, 2, 4,
27, 99J,
S18/22,
S30/27,
DR350



Airtied[™]
HUMAN HAIR BLEND

100% FULLY HAND-TIED WIG

Our Sleek Yaki unit is summer-approved. Women love the realistic texture and the airy, comfortable wig cap that keeps them feeling cool.

- Human Hair Blend
- 100% Fully Hand-Tied with Vanish HD+ Lace Frontal
- Track-Free, Lightweight & Breathable Mesh Cap
- Thinner & More Flexible for a Seamless Melt
- Pre-Plucked Hairline with Smaller Knots
- Contoured Lace Hairline
- Pre-attached Elastic Band for a Glueless Install

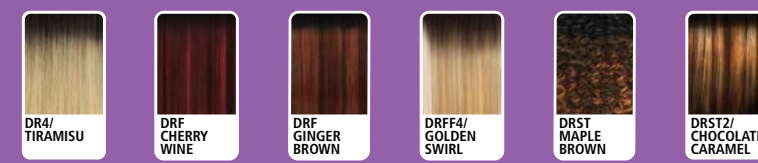
COLOR SHOWN : DRF GINGER BROWN

**HHB-SLEEK
YAKI 20"**



COLOR SHOWN : DRST/MAPLE BROWN, DRF CHERRY WINE, DR4/TIRAMISU, DRF GINGER BROWN, DRF GINGER BROWN (LEFT TO RIGHT)

AVAILABLE COLORS
1, 1B, 2, DR4/TIRAMISU, DRF CHERRY WINE, DRF GINGER BROWN, DRFF4/GOLDEN SWIRL,
DRST MAPLE BROWN, DRST2/CHOCOLATE CARAMEL



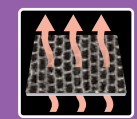
**VANISH
HD+ LACE**



SOFT & THIN MASTERFUL MELT



GLUELESS
ELASTIC BAND



BREATHABLE
MESH CAP



13"X6"
LACE AREA



COLOR SHOWN : GINGER COPPER KISS

Outre®

5"X5" LACE CLOSURE WIG

100% HUMAN HAIR BLEND

Glam Curls 24" is a celebrity hairstylist in a box! This DIY-friendly and beginner wig will have you looking your best in no time.

- 100% Human Hair Blend
- 5"x5" Lace Area
- Part Your Way - Left, Right, or Center
- Hand-Tied HD Lace
- Natural Pre-Plucked Hairline with Baby Hair
- Pre-Attached Elastic Band for a Flat Fit
- Fast, Easy & Effortless Glueless Installs

HHB-GLAM CURLS 24"



COLOR SHOWN : GOLDEN HONEY BLOND, GINGER COPPER KISS, GINGER COPPER KISS, GINGER COPPER KISS (LEFT TO RIGHT)

AVAILABLE COLORS
1, 1B, 2, BURGUNDY, GINGER COPPER KISS, GOLDEN AMBER, GOLDEN HONEY BLONDE, DR PAPIKA SPICE, DR2/HAZELNUT BROWN, DR2/VANILLA COCOA, DRFF2/VANILLA MOCHA



COLOR SHOWN : DR DRAGON FRUIT

melted HAIRLINE®

SWIRLISTA™

L A C E F R O N T W I G

Level up your baby hair styling this summer! With Swirlista 111 you get luscious waves and a wider lace area to swirl your edges.

PERFECTED HAND-TIED LACE PART, HAIRLINE & SIDEBURNS

- More Space to Finesse your Baby Hairs
- Pre-Plucked with Precision
- Super Natural Shape and Density
- 5" Deep C-Shape Parting

BEAUTIFUL BLENDING & EASY INSTALLS

- Pre-Attached Wide Elastic Band for Glueless Installs
- Redesigned ComfortFit Ear Contour
- Soft HD Transparent Lace

SWIRL 111 26"

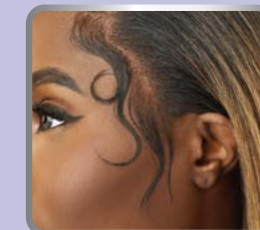


COLOR SHOWN : DR4/BROWN SUGAR MELT, 1B, DR DRAGON FRUIT, DR DRAGON FRUIT (LEFT TO RIGHT)

AVAILABLE COLORS
1, 1B, 2, 99J, CHOCOLATE CARAMEL, GINGER, GOLDEN AMBER, GOLDEN HONEY BLONDE, DR DRAGON FRUIT, DR4/BROWN SUGAR MELT



DEEPER, WIDER HAND-TIED LACE HAIRLINE



5" DEEP C-SHAPE PARTING





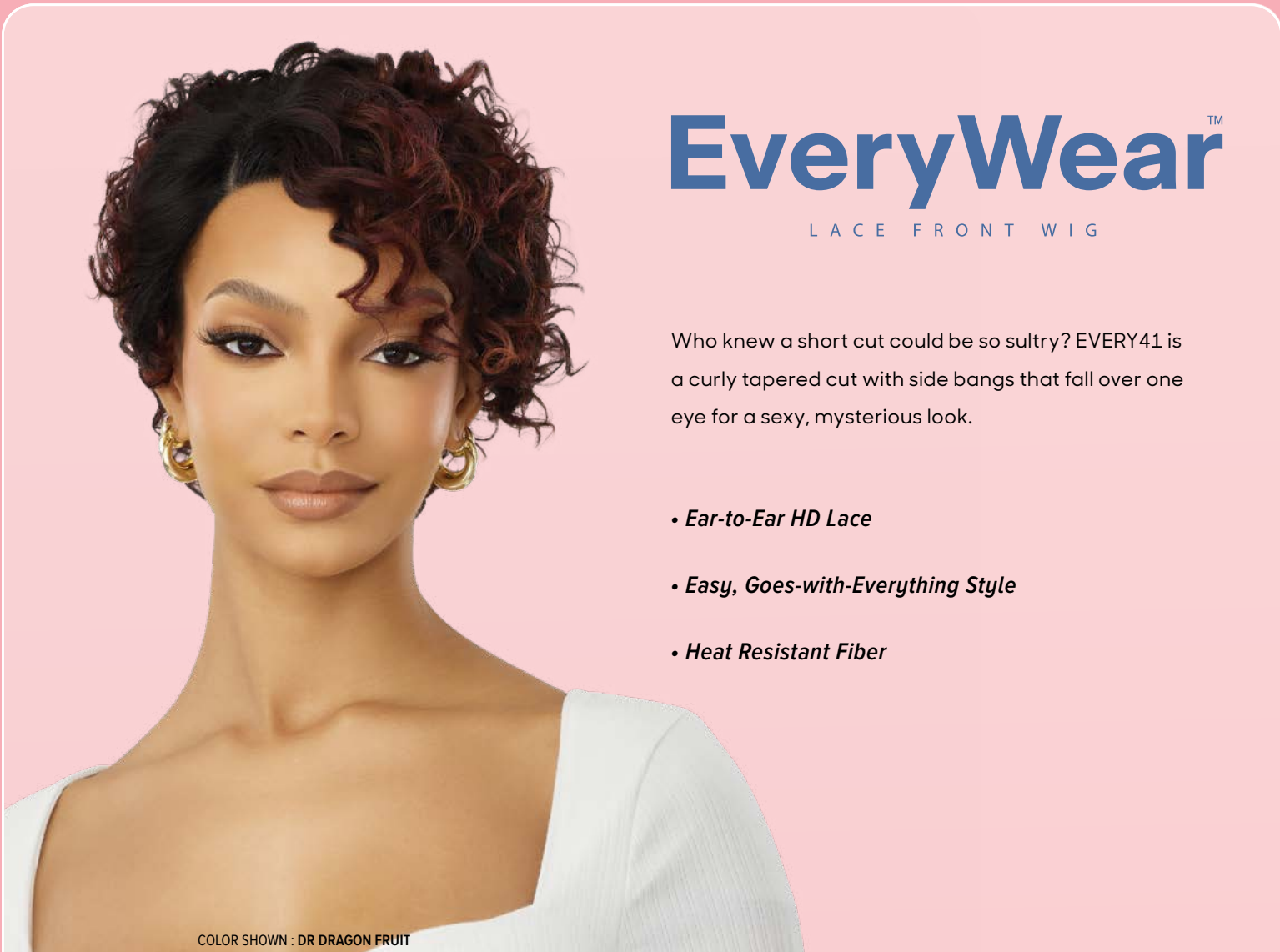
Lace front

LACE FRONT WIG

Make a lasting first impression with Maxie. Featuring a middle part and voluminous curls that start at the eyes for maximum impact.

- HD Transparent Lace
- Pre-Plucked Parting
- Breathable, Comfortable Cap
- Natural Baby Hairs
- Fast, Easy & Effortless Glueless Installs
- Heat Resistant Fiber

COLOR SHOWN : TIRAMISU



EveryWear

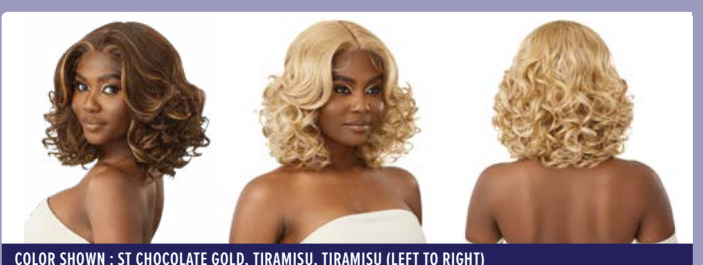
LACE FRONT WIG

Who knew a short cut could be so sultry? EVERY41 is a curly tapered cut with side bangs that fall over one eye for a sexy, mysterious look.

- Ear-to-Ear HD Lace
- Easy, Goes-with-Everything Style
- Heat Resistant Fiber

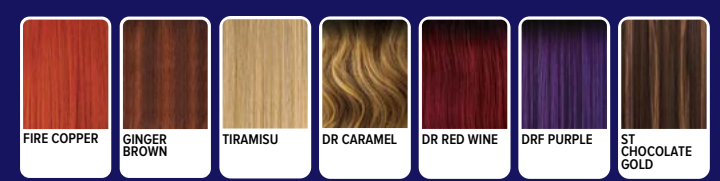
COLOR SHOWN : DR DRAGON FRUIT

MAXIE 12"

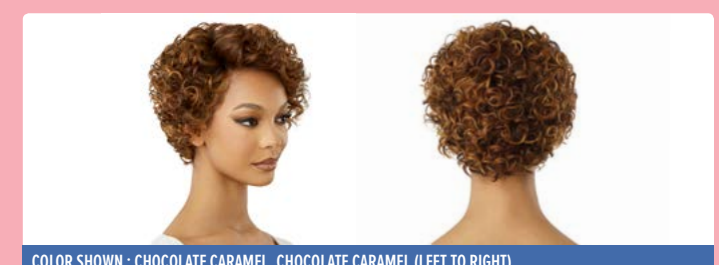


COLOR SHOWN : ST CHOCOLATE GOLD, TIRAMISU, TIRAMISU (LEFT TO RIGHT)

AVAILABLE COLORS
1, 1B, 2, FIRE COPPER, GINGER BROWN, TIRAMISU, DR CARAMEL, DR RED WINE, DRF PURPLE, ST CHOCOLATE GOLD

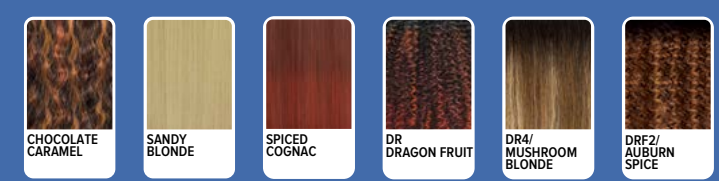


EVERY41



COLOR SHOWN : CHOCOLATE CARAMEL, CHOCOLATE CARAMEL (LEFT TO RIGHT)

AVAILABLE COLORS
1, 1B, 2, CHOCOLATE CARAMEL, SANDY BLONDE, SPICED COGNAC, DR DRAGON FRUIT, DR4/MUSHROOM BLONDE, DRF2/AUBURN SPICE





COLOR SHOWN : 3DR4/CREAM OMBRE

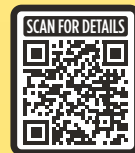
THE DAILY WIG™

PREMIUM SYNTHETIC FIBERS
LACE PART WIG

Curtain bangs, 24" layers and special colors makes Laniece an unforgettable look.

- Premium Synthetic Fibers
- Pre-Plucked & Hand-Tied Lace I-Part
- Breathable Mesh Cap
- Heat-Styling Friendly

LANIECE 24"



COLOR SHOWN : DR4/ASH BROWN, 3DR4/CREAM OMBRE, 3DR4/CREAM OMBRE (LEFT TO RIGHT)

AVAILABLE COLORS
1, 1B, 2, CHOCOLATE SWIRL, GINGER BROWN, RED VELVET, TIRAMISU, DR2/CREAMY TOFFEE, DR4/ASH BROWN, 3DR4/CREAM OMBRE



wigpop®

SYNTHETIC FULL WIG

Niecy's not for the shy. This fashion-forward pixie features tousled, razor-cut layers and is available in classic and adventurous colors.

- Great Value
- Ready to Wear & Go
- Range of Trendy Colors & Styles
- Heat-Styling Friendly

COLOR SHOWN : CHOCOLATE SWIRL

NIECY



COLOR SHOWN : SOFT BLONDE, CHOCOLATE SWIRL, CHOCOLATE SWIRL (LEFT TO RIGHT)

AVAILABLE COLORS
1, 1B, 2, CHOCOLATE SWIRL, COPPER, GOLDEN AMBER, HAVANA BROWN, MIDNIGHT BLUE, RED VELVET, SOFT BLONDE



wigpop®

SYNTHETIC FULL WIG



Sound the alarm! Cyra's layers and shaggy bangs are fiery hot. Get them in blazing colors like Rosy Ombre and Cherry Crush.

- Easy to Wear, Elevated Looks
- Special Styles: More curls, more textures, more length
- Ready to Wear & Go
- Heat-Styling Friendly

COLOR SHOWN : 3DR ROSY OMBRE

CYRA 26"



COLOR SHOWN : CREAM SODA, 3DR ROSY OMBRE, 3DR ROSY OMBRE (LEFT TO RIGHT)

AVAILABLE COLORS
1, 1B, 2, CHOCOLATE SWIRL, CREAM SODA, GINGER BROWN, 3DR ROSY OMBRE, DRFF CHERRY CRUSH, DRST HONEY BROWN





COLOR SHOWN : DR DRAGON FRUIT



COLOR SHOWN : DR CHAI LATTE



COLOR SHOWN : 2

Quick WEAVE®

You bought the sundress, now complete your summer look with Ryanne. This half-wig instantly adds 28" of beautifully styled curls.

Sable makes a statement with its gorgeous ringlets in array of colors from Silver Brown to Vanilla Tart.

Keep it short and sweet with Miriam. This bob features a fluffy blowout style with layers.

- Natural Texture & Volume
- New Cap Lays Flatter
- High Heat Resistant Fiber
- Easy-to-Wear Styles
- Less Leave Out Required

RYANNE 28"



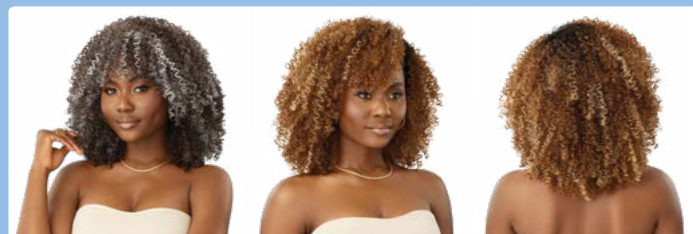
SABLE 16"



MIRIAM 14"



COLOR SHOWN : DR4/GOLDEN HONEY BLONDE, DR DRAGON FRUIT, DR DRAGON FRUIT (LEFT TO RIGHT)



COLOR SHOWN : DXH SILVER BROWN, DR CHAI LATTE, DR CHAI LATTE (LEFT TO RIGHT)



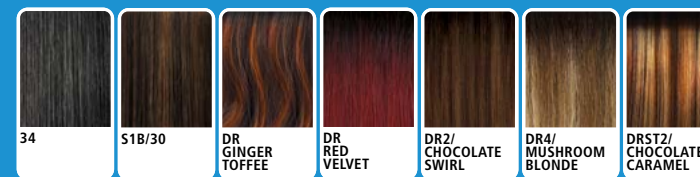
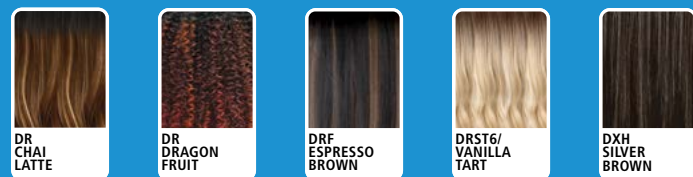
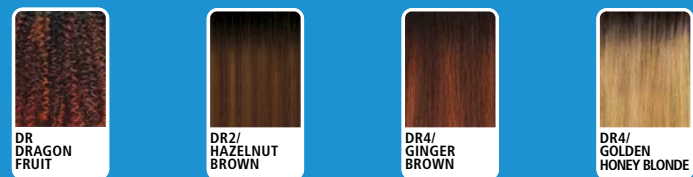
COLOR SHOWN : DR4 MUSHROOM BLONDE, 2, 2 (LEFT TO RIGHT)



AVAILABLE COLORS
1, 1B, 2, DR DRAGON FRUIT, DR2/HAZELNUT BROWN, DR4/GINGER BROWN, DR4/GOLDEN HONEY BLONDE

AVAILABLE COLORS
1, 1B, 2, DR CHAI LATTE, DR DRAGON FRUIT, DRF ESPRESSO BROWN, DRST6/VANILLA TART, DXH SILVER BROWN

AVAILABLE COLORS
1, 1B, 2, 34, S1B/30, DR GINGER TOFFEE, DR RED VELVET, DR2/CHOCOLATE SWIRL, DR4/MUSHROOM BLONDE, DRST2/CHOCOLATE CARAMEL



Pretty Quick™

PREMIUM SYNTHETIC FIBER

WRAP PONY

Be the center of attention in this extra long, wrap pony! Its dramatic length will have everyone looking at you.

- Made with Premium Synthetic Fiber
- Great for High & Low Ponytails
- Salon Style Wrap Ponytail
- Bulk-Free Ponytail Base
- Quick and Easy Styling
- Lightweight
- Soft Feel & Natural Luster



COLOR SHOWN : 1B (LEFT), DR RED VELVET (RIGHT)

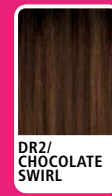
Velvety Soft

BONE STRAIGHT 34"



AVAILABLE COLORS

1, 1B, 2, DR RED VELVET, DR2/CHOCOLATE SWIRL, DR2/GINGER BROWN, DR4/HONEY GOLD



Pretty Quick™

PREMIUM SYNTHETIC FIBER

PONY

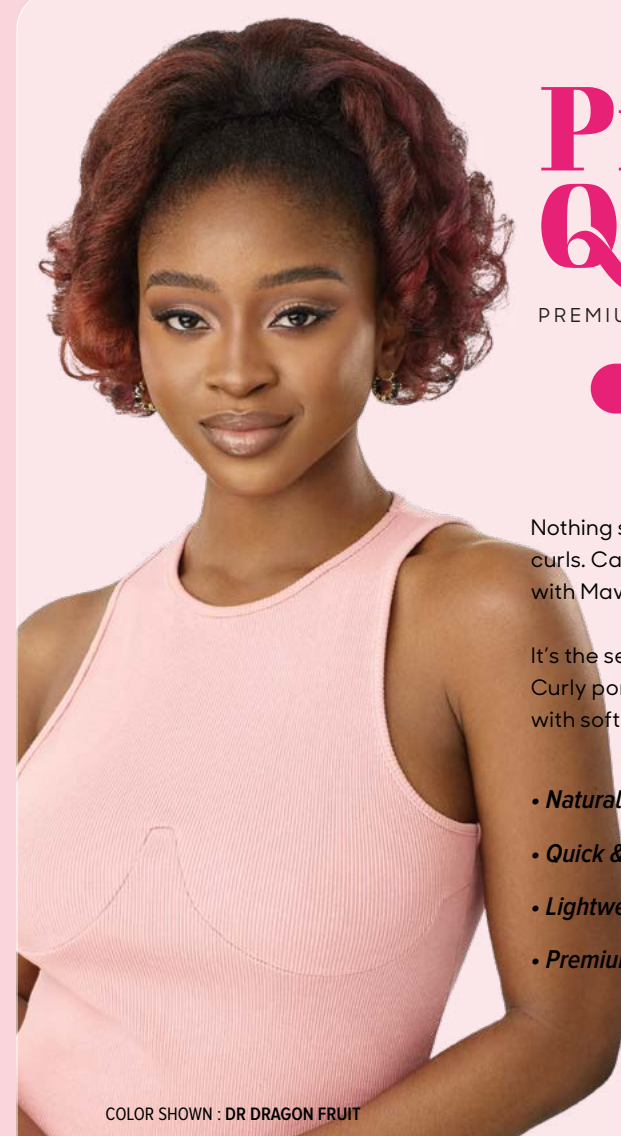
Nothing says "look at me" like 30" of curls. Capture everyone's attention with Mave's hip-grazing length.

It's the season for texture. This Kinky Curly ponytail has blowout volume with soft barrel curls.

- Natural Look & Soft Texture
- Quick & Easy Styling
- Lightweight Drawstring Construction
- Premium Synthetic Fiber

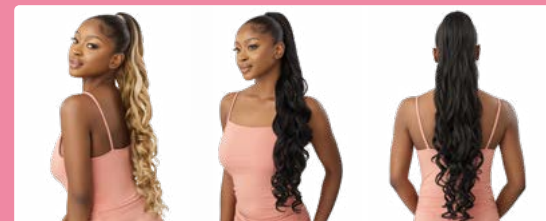


COLOR SHOWN : 1B



COLOR SHOWN : DR DRAGON FRUIT

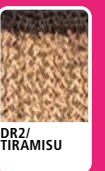
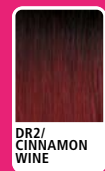
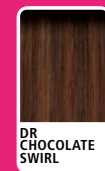
MAVE 30"



COLOR SHOWN : DR2/TIRAMISU, 1B, 1B (LEFT TO RIGHT)

AVAILABLE COLORS

1, 1B, 2, DR CHOCOLATE SWIRL, DR2/CINNAMON WINE, DR2/GINGER BROWN, DR2/GOLDEN AMBER, DR2/TIRAMISU



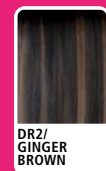
KINKY CURLY 12"



COLOR SHOWN : 1B, DR DRAGON FRUIT, DR DRAGON FRUIT (LEFT TO RIGHT)

AVAILABLE COLORS

1, 1B, 2, DR DRAGON FRUIT, DR2/CHOCOLATE SWIRL, DR2/GINGER BROWN, DR4/MUSHROOM BLONDE, DRF ESPRESSO BROWN





BONE STRAIGHT | DOUBLE DRAWN



VELVET Lush™

REMY

100% REMY HUMAN HAIR

VELVET LUSH
LUXURY MEETS RELIABILITY



MULTIPLE WASHES & WEARS

WORRY-FREE WASHING



AFTER WASHING



- MULTIPLE WEARS
- MULTIPLE WASHES
- MADE TO LAST

- NOT WASH & RE-WEAR FRIENDLY
- FRIZZY, DRY & HARD TO DETANGLE

STYLE & COLOR SHOWN :
VELVET LUSH | 1

AVAILABLE COLORS : 1, 1B, 2 AVAILABLE LENGTHS : 10", 12", 14", 16", 18", 20", 22", 24"