

Outre®

JUNE 2022



STYLE & COLOR SHOWN:
SPRINGY BOHEMIAN TWIST 24' 3X MACCHIATO (LEFT),
SPRINGY BOHEMIAN TWIST 30' 3X DRAGON FRUIT (CENTER),
SPRINGY BOHEMIAN TWIST 16' 3X HIB (RIGHT)

Outre®
85 Oxford Drive,
Moonachie, NJ 07074
USA



WHAT'S NEXT?

A NEW CURL FROM TWISTED UP

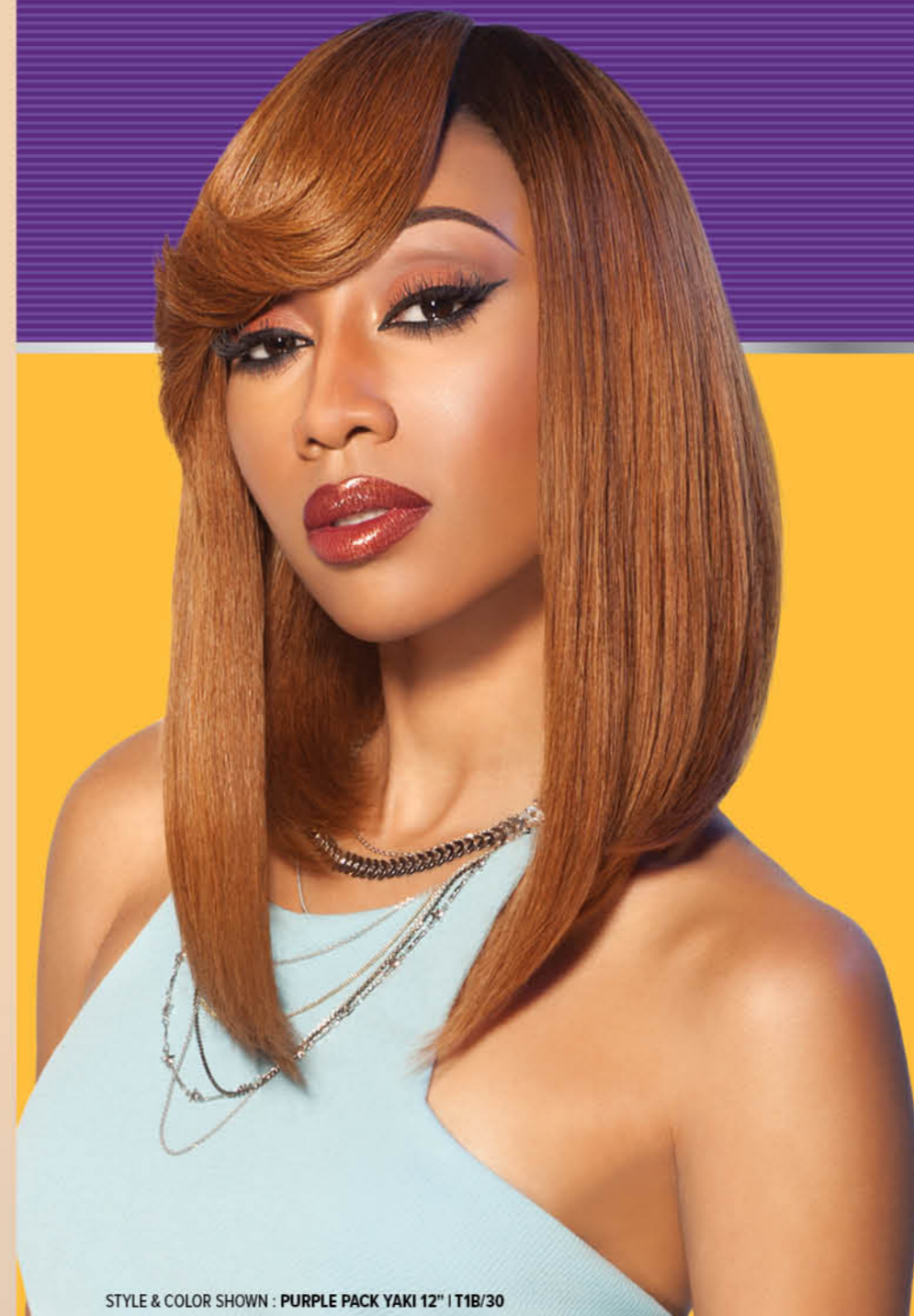
IN THIS ISSUE

X-Pression knows what braiders want - more curl options to make more styles! Springy Bohemian Twist has the same great benefits of Springy Afro Twist with a larger curl size that's perfect for butterfly loc loops and distressed styles.

HH-BLEND WEAVE 03 premium purple pack NEW COLOR PURPLE PACK YAKI 10", 12", 14", 16", 18"	BRAID 04 Twisted Up X-Pression SPRINGY BOHEMIAN TWIST 16" 3X SPRINGY BOHEMIAN TWIST 24" 3X SPRINGY BOHEMIAN TWIST 30" 3X	BRAID 06 Twisted Up X-Pression SPRINGY AFRO TWIST	BRAID 08 Twisted Up X-Pression WATERWAVE FRO TWIST 26" EXTRA SUPER LONG 3X
BRAID 10 Twisted Up X-Pression DEEP TWIST 26" SUPER LONG 3X SUMMER DEEP WAVE 26" SUPER LONG 3X	BRAID 12 X-Pression PRE-STRETCHED PRE-STRETCHED BRAID 32" 3X	BRAID 13 Lil Looks X-Pression BOX BRAID SWEET 8" 2X	BLEND LACE WIG 14 Outre 360 HARD-TEE LACE FRONT MARISA
LACE WIG 15 PERFECT HAIRLINE FABIENNE TATIENNE	LACE WIG 16 melted HAIRLINE LACE FRONT WIG KARMINA LUCIENNE	LACE WIG 18 SleekLay Part LAVETTE NELLA	LACE WIG 19 EveryWear LACE FRONT WIG EVERY22
LACE WIG 20 Lace front DENVER LESMA KASILDA	LACE WIG 22 Lace front W&W PRICILLA ALSHIRA CARMELLA LORETTA	LACE PART WIG 24 THE DAILY WIG LACE PART WIG HAYDEN CALLA LUNETTE	FULL WIG 26 wigpop SYNTHETIC FULL WIG COLTON CHANCE JOYANA
FULL WIG 28 wigpop SYNTHETIC FULL WIG JIA LAKISHA JOVI	CONVERTI-CAP 30 converti-cap SUPER NOVA	PONYTAIL 31 Outre Pretty Quick PREMIUM SYNTHETIC FIBER BANG X PONY NOVELIA	

premium purple pack

100% HUMAN HAIR PREMIUM BLEND



Designed to match natural hair textures, HH Purple Pack Yaki in 613 is the perfect canvas for creating any look. Available in a pre-bleached platinum color and a variety of lengths.

- 100% Human Hair
- Platinum Blonde
- Pre-Bleached
- Customize Effortlessly

NEW COLOR



613

STYLE & COLOR SHOWN : PURPLE PACK YAKI 12" | T1B/30

PURPLE PACK YAKI

AVAILABLE COLORS :

PURPLE PACK YAKI 10" | 12" | 14" :
 1, 130S, 1B, 2, 27, 30, 33, 350, 4, 425, 613, 950, BU, C1B/30, C1B/33, C27/30, C4/30, T1B/27, T1B/2730, T1B/30, T1B/350, T1B/BU, T1B/RED

PURPLE PACK YAKI 16" :
 1, 130S, 1B, 2, 27, 30, 33, 350, 4, 425, 613, 950, BU, C1B/30, C1B/33, C4/30, LT1B/427, T1B/27, T1B/2730, T1B/30, T1B/350, T1B/BU, T1B/RED

PURPLE PACK YAKI 18" :
 1, 130S, 1B, 2, 27, 30, 33, 350, 4, 425, 613, 950, BU, C1B/30, C1B/33, C4/30, LT1B/427, LT1B/433, T1B/27, T1B/2730, T1B/30, T1B/350, T1B/BU, T1B/RED

X-Pression
Twisted Up
SPRINGY BOHEMIAN TWIST

100% KANEKALON FIBER

The NEW Twisted Up Springy Bohemian Twist features a wavy style in the same lightweight, pre-stretched, 100% Kanekalon fiber that shoppers prefer.



COLOR SHOWN : 1B



COLOR SHOWN : MACCHIATO



COLOR SHOWN : DRAGON FRUIT



SPRINGY BOHEMIAN TWIST 16" 3X

SPRINGY BOHEMIAN TWIST 24" 3X

SPRING BOHEMIAN TWIST 30" 3X

SPECIAL COLORS



AVAILABLE COLORS :

SPRINGY BOHEMIAN TWIST

16" 3X | 24" 3X | 30" 3X :

1, 1B, 2, 4, 613, 2T1B/27, 2T1B/30, 2T1B/425, MACCHIATO, DRAGON FRUIT

- Made with 100% Kanekalon
- Ready to install - Pre-Fluffed and Pre-Separated
- Wavy Style in a Variety of Colors
- Creates Locs, Twists, Braids and Crochet Braids
- Soft Texture & Lightweight



100% Kanekalon®

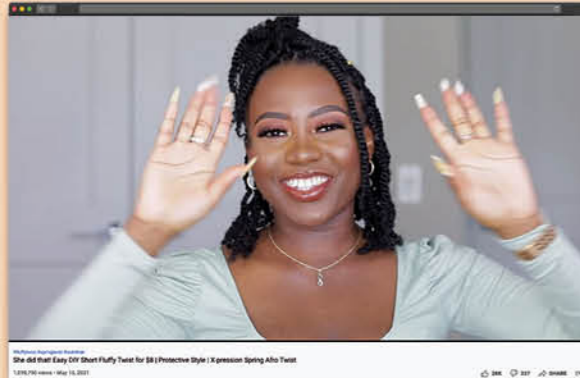
Flame Retardant Fiber



1 LOYAL FANS ARE CONSTANTLY FINDING NEW LOOKS TO TRY!



2 1M+ VIEWS AND STILL COUNTING, CHECK OUT THIS VIDEO!



X-Pression Twisted Up®

SCAN ME

3 PRE-SEPARATED & PRE-FLUFFED FOR EASY INSTALLATION



100% Kanekalon®
Flame Retardant Fiber



STYLE & COLOR SHOWN :
 STRINGY AFRO TWISTS 30" 3X / 1B

X-Pression®
Twisted Up®
SPRINGY AFRO TWIST

100% KANEKALON FIBER

Create any look with Springy Afro Twist. Whether the next style is a distressed locs hairdo, butterfly locs look, or hip-length twists, Springy Afro Twist is the perfect pick to make it.

- Made with 100% Kanekalon
- Ideal For Butterfly Locs, Distressed Locs, Knotless Styles, Crochet Styles, Kinky Curly Ponytails and more
- Soft on Skin & Ultra Lightweight
- Variety of Lengths & Colors
- Matches Kinky Curly Hair



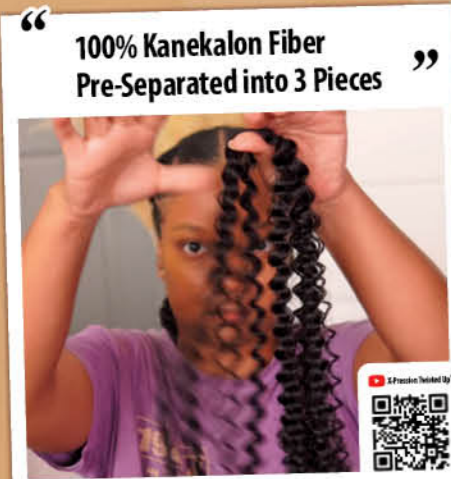
AVAILABLE LENGTH & COLORS

- SPRINGY AFRO TWIST 12" 3X** : 1, 1B, 2, 4, 27, 30, 2T1B/27, 2T1B/30, 2T1B/350, 2T1B/425
- SPRINGY AFRO TWIST 16" 3X** : 1, 1B, 2, 4, 27, 30, 350, 425, 950, 51, 613, 2T1B/27, 2T1B/30, 2T1B/350, 2T1B/425, 2T1B/BLOCK, 2T1B/PURPLE, 2T4/30, 2T99J/350, SUNKISS SHERBERT, MERMAID, LATTE, HOTPINK, STRIKE, CARNIVAL, CHAMPAGNE AMBER, ORANGE SODA, SNOW BISCUIT
- SPRINGY AFRO TWIST 24" 3X** : 1, 1B, 2, 4, 27, 30, 51, 350, 613, 2T1B/27, 2T1B/30, 2T1B/350, 2T1B/425, 2T1B/BLOCK, 2T1B/PURPLE, 2T4/30, 2T99J/350, HOT PINK
- SPRINGY AFRO TWIST 30" 3X** : 1, 1B, 2, 4, 613, 2T1B/27, 2T1B/30, 2T1B/350, 2T1B/425



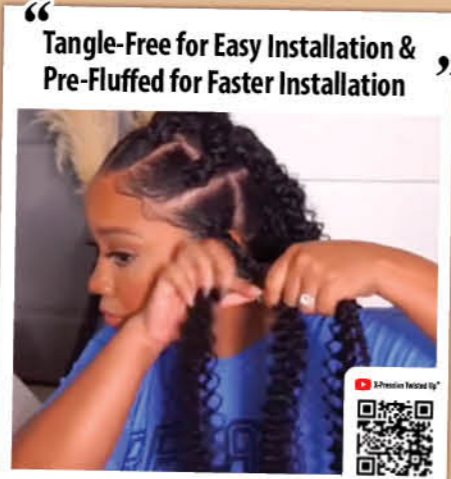
SPECIAL COLORS





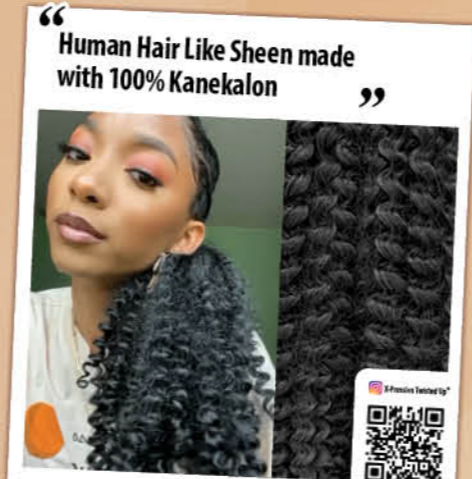
“ 100% Kanekalon Fiber Pre-Separated into 3 Pieces ”

1 THE MOST CONVENIENT BRAIDING HAIR



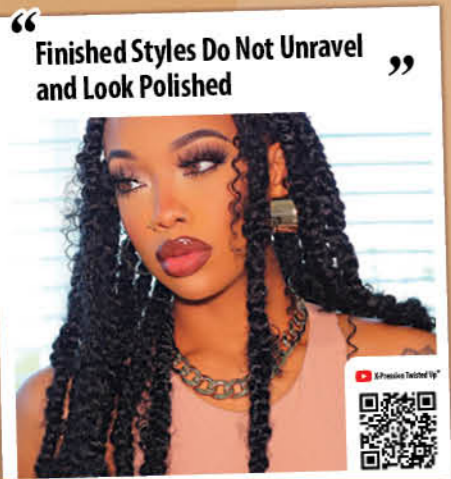
“ Tangle-Free for Easy Installation & Pre-Fluffed for Faster Installation ”

2 THE BEST VALUE BRAIDING HAIR



“ Human Hair Like Sheen made with 100% Kanekalon ”

3 THE MOST NATURAL LOOKING BRAIDING HAIR



“ Finished Styles Do Not Unravel and Look Polished ”

4 THE MOST STYLISH BRAIDING HAIR



“ Soft On Skin & Ultra Lightweight ”

5 THE SAFEST BRAIDING HAIR



WATERWAVE FRO TWIST 22" 2X

WATERWAVE FRO TWIST SUPER LONG 3X

COLOR SHOWN : 1B (LEFT), 2T1B/30 (RIGHT)



COLOR SHOWN : 2T1B/30

X-Pression
Twisted Up
WATERWAVE FRO TWIST

EXTRA SUPER LONG 3X

100% KANEKALON FIBER

Our lightweight, pre-fluffed Waterwave Fro Twist creates endless styles and now comes in an Extra Superlong 26" option. Create trendy styles faster and easier this summer!

- Made with the Popular Waterwave Fro Twist Synthetic Fiber
- Quick, Long Lasting Protective Style
- Soft Texture
- Lightweight
- 100% Handcrafted
- Nonflammable



AVAILABLE COLORS:
WATERWAVE FRO TWIST 22" 2X : 1, 1B, 2, 4, 51, 613, 2T1B/27, 2T1B/30, MACCHIATO, DRAGON FRUIT
WATERWAVE FRO TWIST SUPER LONG 3X : 1, 1B, 2, 4, 27, 30, 51, 425, 613, 2T1B/27, 2T1B/30, MACCHIATO, DRAGON FRUIT, BLUE, PURPLE, RED, HOT PINK
WATERWAVE FRO TWIST 26" EXTRA SUPER LONG 3X : 1, 1B, 2, 4, 2T1B/27, 2T1B/30, MACCHIATO, DRAGON FRUIT



LIGHTWEIGHT

SPECIAL COLORS



2T1B/27

2T1B/30

MACCHIATO

DRAGON FRUIT

BLUE

PURPLE

RED

HOT PINK

X-Pression
Twisted Up
DEEP TWIST 26"
SUPER LONG 3X

There's no such thing as too many wavy style options or inches of hair! Get more of both with the new ultra wavy Deep Twist 26" Super Long style.

X-Pression
Twisted Up
SUMMER DEEP WAVE 26"
SUPER LONG 3X

Summer Deep Wave 26" is the newest style with luscious waves in a Super Long option to make stunning, hip-length looks.



COLOR SHOWN : 2T1B/27

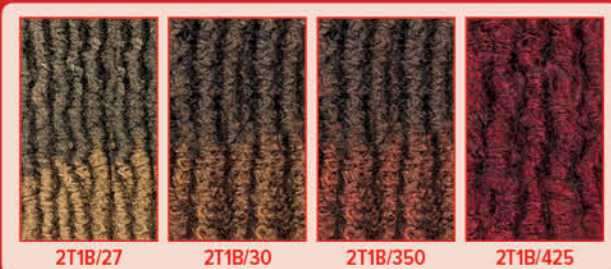


COLOR SHOWN : 2T1B/30 (LEFT), 1B (RIGHT)



DEEP TWIST 26" SUPER LONG 3X

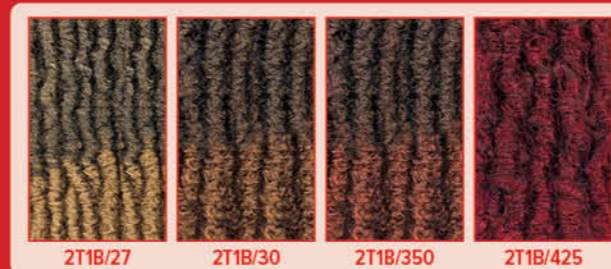
AVAILABLE COLORS : 1, 1B, 2, 4, 2T1B/27, 2T1B/30, 2T1B/350, 2T1B/425



- Premium Synthetic Fiber
- Creates countless locs, twist, braid, ponytail and crochet styles
- Soft Texture & Lightweight

SUMMER DEEP WAVE 26" SUPER LONG 3X

AVAILABLE COLORS : 1, 1B, 2, 4, 2T1B/27, 2T1B/30, 2T1B/350, 2T1B/425



- Premium Synthetic Fiber
- Creates countless locs, twist, braid, ponytail and crochet styles
- Soft Texture & Lightweight

NEW
3X 32"

X-Pression
PRE-STRETCHED



Outre 1B



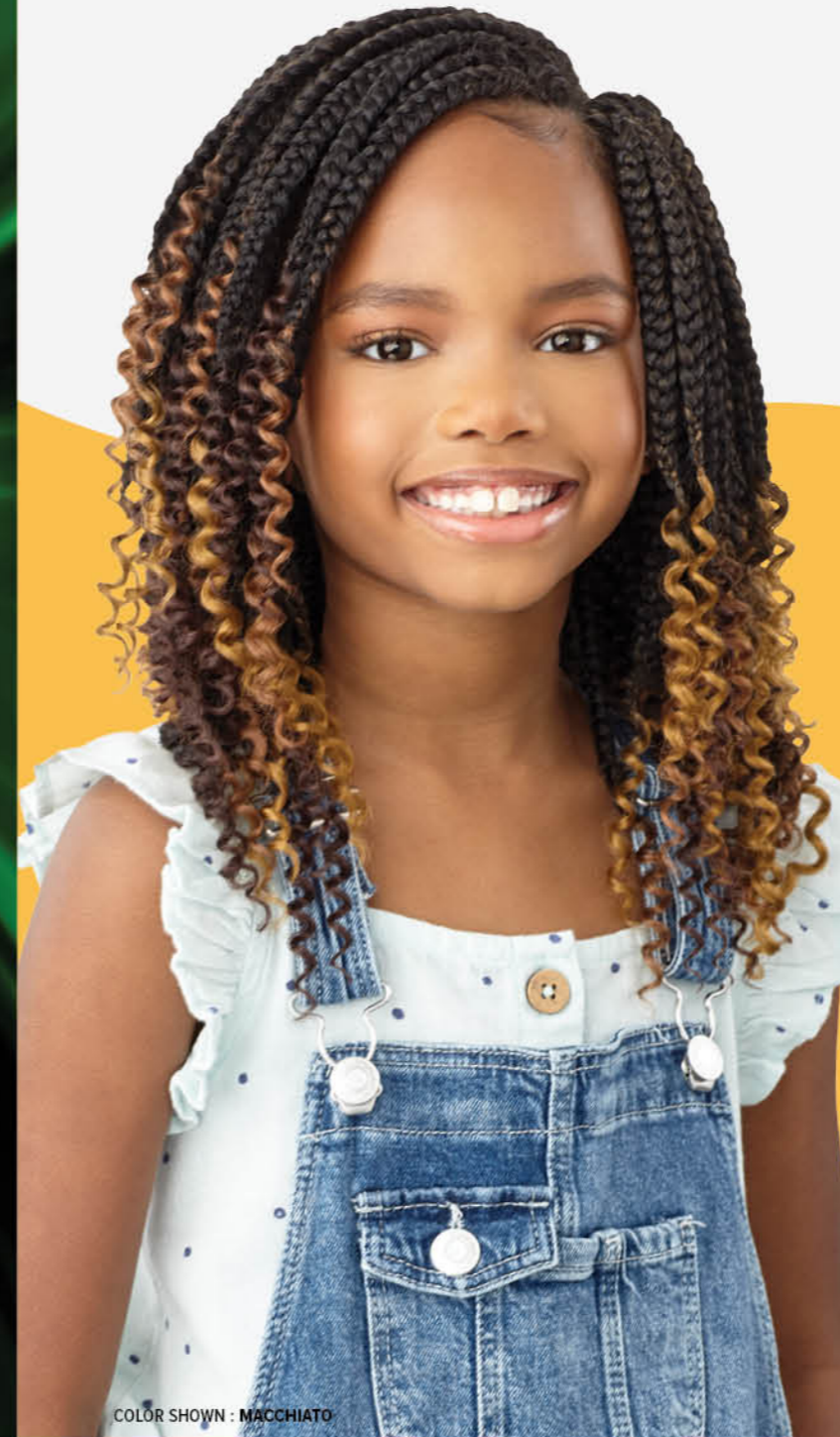
Superior braiding meets speed. Take the shortcut to creating braided styles with this pre-stretched 32" length braiding hair from X-Pression.



PRE-STRETCHED BRAID 32" 3X

AVAILABLE COLORS :
1, 1B, 2, 4, 2T1B/27,
2T1B/30, 2T1B/350,
2T1B/425

- Pre-Stretched & Pre-Layered
- Quickest Install
- Easy to Braid
- Easy to Manage
- Ultra Lightweight
- Hot Water Set Friendly
- Tangle-Free



COLOR SHOWN : MACCHIATO

X-Pression
LIL LOOKS

Made for kids, Box Braid Sweetie is in perfectly sized crochet pieces and a convenient 2X pack.



18
STRANDS



BOX BRAID SWEETY 8" 2X

- Trusted X-Pression Brand
- Small Sizes & Lengths
- Ready-to-Install, No Cutting Needed
- Easy to Maintain & Manage
- Soft Texture & Lightweight

AVAILABLE COLORS :
1, 1B, 2, 4, MACCHIATO, DRAGON FRUIT



Outre®

100% HUMAN HAIR BLEND

360 | **13" x 6"**
FRONTAL LACE WIG | HAND-TIED LACE FRONTAL



Delight customers with Marisa - a 360, frontal unit with endless styling options that's paired with a hairline and colors that look custom-made.

- Premium Human Hair Blend
- 360 All Around Hand-Tied Lace Edges
- 13" x 6" HD Lace Frontal
- Pre-Plucked Hairline with a Natural Shape
- Full Temple Coverage & Sideburn-to-Sideburn Hand-Tied Lace
- Pre-Attached Elastic Band for a Flat Fit



COLOR SHOWN:
DRFF2/VANILLA CHOCOLATE, DRFF2/GINGER BROWN,
CHOCOLATE SWIRL (LEFT TO RIGHT)



SIDE

BACK



MARISA 13" X 6" 24"

AVAILABLE COLORS :

- 1, 1B, 2, CHOCOLATE SWIRL,
HAVANA BROWN,
DR RED VELVET,
DR4/GOLDEN HONEY BLONDE,
DRFF GOLDEN AMBER,
DRFF2/GINGER BROWN,
DRFF2/VANILLA CHOCOLATE

SPECIAL COLORS



PERFECT HAIRLINE™

FULLY HAND-TIED 13"X6" LACE WIG

Fabienne is a fresh new style on a 13"x6" fully hand-tied wig! This unit features a picture perfect hairline, multiple parting options and pretty curls in premium colors.

Meet Tatiénne! This 13" x 6" unit has sleek, long layers that taper into a V-shape for a natural touch.

- Fully Hand-Tied 13" x 6" Frontal
- Ear-to-Ear Soft HD Transparent Lace
- Natural Baby Hairs
- Comes with Pre-Attached Elastic Band
- Pre-Plucked Hairline
- Heat Resistant Fibers



COLOR SHOWN:
CHOCOLATE SWIRL (MAIN)
DR4/SANDY BLONDE, DRFF RED VELVET
(BOTTOM LEFT TO RIGHT)

COLOR SHOWN:
DRF4/VANILLA CARAMEL (MAIN)
DRF GINGER BROWN, DRF CHERRY WINE
(BOTTOM LEFT TO RIGHT)



SIDE

BACK

SIDE

BACK



LACE FRONTAL

TRANSPARENT HD LACE
NO PLUCKING REQUIRED



FABIENNE 13" X 6" 18" **TATIENNE 13" X 6" 26"**

AVAILABLE COLORS :

- FABIENNE :** 1, 1B, 2, 613, CHOCOLATE SWIRL, DRST2/CHOCOLATE CARAMEL,
DR4/SANDY BLONDE, DR4/GOLDEN HONEY BLONDE, DRFF GOLDEN AMBER,
DRFF RED VELVET, DRFF2/GINGER BROWN
- TATIENNE :** 1, 1B, 2, 613, DR COPPER ORANGE, DR4/SANDY BLONDE,
DRF CHERRY WINE, DRF GINGER BROWN, DRF2/HAZELNUT BROWN,
DRF4/VANILLA CARAMEL

SPECIAL COLORS





- Soft HD Transparent Lace
- 5" Deep Parting
- Completely Pre-Plucked Hairline & Sideburns
- Pre-Attached Wide Elastic Band for a Secure Fit
- Natural Baby Hairs
- Redesigned ComfortFit Ear Contour

melted HAIRLINE®

LACE FRONT WIG

Deeper ear-to-ear HD lace allows Karmina's face-framing style to be smoothed back to show off the hairline. Get the unit made for fresh, slicked-back summer looks!

Lucienne is a sophisticated straight style with bumped ends paired with a hairline that melts onto the skin.



COLOR SHOWN :
DRFF2/BROWN SUGAR (LEFT)
DRFF CARAMEL MOCHA (CENTER)
DR4/COPPER GOLD (RIGHT)



COLOR SHOWN :
HAVANA BROWN (LEFT)
DR4/SANDY BLONDE (CENTER)
DR COPPER ORANGE (RIGHT)



KARMINA 20"

LUCIENNE 22"

SPECIAL COLORS



AVAILABLE COLORS :

KARMINA
1, 1B, 2, 613, DR RED VELVET, DR2/CINNAMON SPICE, DR4/COPPER GOLD, DRFF CARAMEL MOCHA, DRFF HAZELNUT, DRFF2/BROWN SUGAR, DRFF4/GOLDEN HONEY

LUCIENNE
1, 1B, 2, 613, HAVANA BROWN, STRAWBERRY BLONDE, DR CHOCOLATE SWIRL, DR COPPER ORANGE, DRST2/CHOCOLATE CAMEL, DR4/SANDY BLONDE, DRFF RED VELVET

SleekLay[®]

LACE FRONT WIG Part

Gorgeous styles and a realistic part are paired together with Lavette and Nella! These SleekLay Part units include a Deep C-Shape Side Parting with more lace area for a sleek, ultra flat look.

- Wider Hand-tied Lace Part
- Deep C-Shape Side Parting
- Extra Hand-tied Lace Edges
- Pre-plucked Hairline
- Hump-less, Laid finish
- Natural Baby Hairs
- Heat-Friendly



COLOR SHOWN :
DRFF4/CHAMPAGNE (TOP)
DRFF/BLACK CHERRY (BOTTOM)

COLOR SHOWN :
DR/CHOCOLATE SWIRL (TOP)
DR4/SUMMER BLONDE (BOTTOM)



LAVETTE 22"

NELLA 12"

AVAILABLE COLORS :

LAVETTE : 1, 1B, 2, 613, DR/CHOCOLATE SWIRL, DR4/GOLDEN AMBER, DRFF/BLACK CHERRY, DRFF/HONEY BROWN, DRFF2/GINGER COPPER, DRFF4/CHAMPAGNE

NELLA : 1, 1B, 2, 613, DR/CHOCOLATE SWIRL, DR4/HONEY GINGER, DR4/SUMMER BLONDE, DRFF/BLACK CHERRY, DRFF/HONEY BROWN, DRFF2/GINGER COPPER

SPECIAL COLORS



Lace[®] Front

EveryWear[™]

LACE FRONT WIG

Every22 is the ultimate goes-with-everything unit. This short, curly style has a fuss-free cap with enough HD lace for a natural finish.

- Ear-to-Ear HD Lace
- High Heat Resistant Fiber
- Easy, Goes-with-Everything Styles



COLOR SHOWN :
GINGER BROWN (LEFT)
DR/CARAMEL (RIGHT)

EVERY22 10"



SPECIAL COLORS



AVAILABLE COLORS :

1, 1B, 2, 613, CHOCOLATE SWIRL, GINGER BROWN, DR/CARAMEL, DR2/CINNAMON WINE, DR2/GOLDEN HONEY BLONDE, DRFF/GOLDEN AMBER

Lace front[®]

LACE FRONT WIG

Curls meet salon-quality colors on the new Denver unit from the fan-favorite, Lacefront brand.

Kasilda offers voluminous curls in a variety of colors. Choose from an assortment of flattering shades.

We've spiced up a classic mid-length style with crimps. Try something unexpected with Lesma.

- HD Transparent Lace
- Breathable, Comfortable Cap
- Natural Baby Hairs
- Heat Resistant Fiber



COLOR SHOWN:
DRFF2/GINGER COPPER (TOP)
DR4/HONEY BLONDE (BOTTOM)



COLOR SHOWN:
DR2/HAZELNUT (TOP)
DRFF2/CINNAMON SPICE (BOTTOM)



COLOR SHOWN:
CHOCOLATE COVERED HONEY (LEFT)
DRFF BLACK CHERRY (RIGHT)



DENVER 20" NATURAL BABY HAIRS

KASILDA 20" NATURAL BABY HAIRS

LESMA 18" NATURAL BABY HAIRS

AVAILABLE COLORS :

DENVER : 1, 1B, 2, 613, DR CHOCOLATE SWIRL, DR2/GOLDEN HONEY BLONDE, DR4/HONEY BLONDE, DRFF BLACK CHERRY, DRFF HONEY BROWN, DRFF2/CINNAMON SPICE, DRFF2/GINGER COPPER

KASILDA : 1, 1B, 2, 613, DR BLACK CHERRY, DR2/GOLDEN HONEY BLONDE, DR2/HAZELNUT, DRFF SUNKISS BROWN, DRFF2/CINNAMON SPICE, DRFF2/GINGER COPPER

LESMA : 1, 1B, 2, 613, CHOCOLATE COVERED HONEY, DR4/GOLDEN HONEY MELT, DRFF BLACK CHERRY, DRFF HONEY BROWN, DRFF2/CINNAMON SPICE, DRFF2/GINGER COPPER

SPECIAL COLORS



Lace front[®]

LACE FRONT WIG

Pricilla's wet & wavy inspired style is the go-to look for warm weather! And matched with gorgeously blended colors, these waves have been upgraded.

Get a high-quality lace front and a whole lotta curls and color options with Loretta!

Carmella has a deep middle part with body waves and colors that melt beautifully together. This unit is simple, yet stunning.

You can't go wrong with Alshira's soft, waist-length curls. Explore all the popular color options.

- Wet & Wavy Inspired Style (Pricilla)
- HD Transparent Lace
- Breathable, Comfortable Cap
- Natural Baby Hairs
- Heat Resistant Fiber



COLOR SHOWN :
DRFF2/CINNAMON SPICE (TOP)
CHOCOLATE SWIRL (BOTTOM)



COLOR SHOWN :
DR2/MAPLE BROWN (TOP)
99J (BOTTOM)



COLOR SHOWN :
DR2/HAZELNUT (TOP)
DR4/GOLDEN AMBER (BOTTOM)



COLOR SHOWN :
DRFF2/GINGER COPPER (LEFT)
DRFF HONEY BROWN (RIGHT)



PRICILLA 20" NATURAL BABY HAIRS

LORETTA 12" PRE-PLUCKED LACE PARTING NATURAL BABY HAIRS

CARMELLA 16" NATURAL BABY HAIRS

ALSHIRA 26" NATURAL BABY HAIRS

AVAILABLE COLORS :

PRICILLA : 1, 1B, 2, 613, CHOCOLATE SWIRL, DR2/GOLDEN HONEY BLONDE, DR4/STRAWBERRY BLONDE, DRFF BLACK CHERRY, DRFF HONEY BROWN, DRFF2/CINNAMON SPICE, DRFF2/GINGER COPPER

LORETTA : 1, 1B, 2, 613, 99J, DR JAVA FROST, DR2/CINNAMON WINE, DR2/GINGER BROWN, DR2/GOLDEN AMBER, DR2/MAPLE BROWN, DR4/GOLDEN HONEY BLONDE

CARMELLA : 1, 1B, 2, 613, DR4/GOLDEN AMBER, DR2/HAZELNUT, DRFF BLACK CHERRY, DRFF HONEY BROWN, DRFF2/GINGER COPPER, DRFF4/CHAMPAGNE

ALSHIRA : 1, 1B, 2, 613, DR CHOCOLATE SWIRL, DR4/HONEY BLONDE, DRFF BLACK CHERRY, DRFF HONEY BROWN, DRFF2/GINGER COPPER, DRFF4/FROSTED DARK BLONDE

SPECIAL COLORS





The Daily Wig has been paired with the prettiest new styles: chin-length bobs, tousled curls, and simply straight. Get these easy-to-wear styles on a cap designed to wear in a snap.

- Pre-Plucked & Hand-Tied Lace I-Part
- Breathable Mesh Cap
- Heat Resistant Fiber



COLOR SHOWN :
DRFF RED VELVET (TOP)
DR2/GOLDEN AMBER (BOTTOM)



HAYDEN 14"



COLOR SHOWN :
RED VELVET (TOP)
1B (BOTTOM)



CALLA



COLOR SHOWN :
DRST2/CHOCOLATE CARAMEL (LEFT)
DRFF RED VELVET (RIGHT)



LUNETTE 22"



AVAILABLE COLORS :

HAYDEN : 1, 1B, 2, 613, DR2/CHOCOLATE SWIRL, DR2/GOLDEN AMBER, DR2/GOLDEN COPPER, DR4/GOLDEN HONEY BLONDE, DR4/HONEY BROWN, DRFF RED VELVET

CALLA : 1, 1B, 2, 613, CHOCOLATE SWIRL, GINGER BROWN, RED VELVET, DR COPPER ORANGE, DR4/GOLDEN AMBER, DR4/SANDY BLONDE

LUNETTE : 1, 1B, 2, 613, GINGER BROWN, STRAWBERRY BLONDE, DR CHOCOLATE SWIRL, DR COPPER ORANGE, DR4/SANDY BLONDE, DRST2/CHOCOLATE CARAMEL, DRFF RED VELVET

SPECIAL COLORS



wigpop™

SYNTHETIC FULL WIG

WIGPOP is back with more new styles in more trendy colors. These ready-to-wear wigs are made for the woman that loves variety and good value.

- Custom Designed Colors
- Ready to Wear & Go
- Heat Resistant Fiber



COLOR SHOWN: DR2/CHOCOLATE SWIRL



COLOR SHOWN: DR2/GOLDEN HONEY BLONDE



COLOR SHOWN: DR CAMEL



COLTON

CHANCE

JOYANA 12"

COLTON : 1, 1B, 2, 613, DR GINGER BROWN, DR RED VELVET, DR2/CHOCOLATE SWIRL, DR2/HONEY BROWN, DR4/GOLDEN HONEY BLONDE

CHANCE : 1, 1B, 2, 613, 99J, HAVANA BROWN, DX CINNAMON WINE, DX CHOCOLATE SWIRL, DX GINGER BROWN, DX GOLDEN AMBER, DR2/GOLDEN HONEY BLONDE

JOYANA : 1, 1B, 2, 613, CHOCOLATE SWIRL, GINGER BROWN, DR CAMEL, DR COPPER ORANGE, DR RED VELVET, DR2/CREAMY TOFFEE, DR4/SANDY BLONDE

SPECIAL COLORS



wigpop™

SYNTHETIC FULL WIG

These new styles are the perfect grab-and-go wigs for every lifestyle and budget.

- Custom Designed Colors
- Ready to Wear & Go
- Heat Resistant Fiber



COLOR SHOWN: DR4/GOLDEN HONEY BLONDE



JIA



COLOR SHOWN: 1B (TOP), 2T GINGER SPICE (BOTTOM)



LAKISHA



COLOR SHOWN: DR4/GOLDEN HONEY BLONDE



JOVI 14"



JIA : 1, 1B, 2, 613, CHOCOLATE SWIRL, GINGER BROWN, DR COPPER ORANGE, DR RED VELVET, DR2/GOLDEN AMBER, DR4/GOLDEN HONEY BLONDE

LAKISHA : 1, 1B, 2, 99J, 2T GINGER SPICE, CHOCOLATE SWIRL, GOLDEN AMBER, DR RED VELVET, DR4/GOLDEN HONEY BLONDE

JOVI : 1, 1B, 2, 613, CHOCOLATE SWIRL, GINGER BROWN, DR COPPER ORANGE, DR RED VELVET, DR2/GOLDEN AMBER, DR4/GOLDEN HONEY BLONDE

SPECIAL COLORS



converti-cap™

PREMIUM SYNTHETIC FIBER

1 WIG, 1 MILLION WAYS.

Our versatile, blendable wig is back! Super Nova is a new textured style that features subtle crimps inspired by kinky straight human hair bundles.

- Limitless styling possibilities
- Reveal your own hairline for a realistic look
- Breathable and flexible cap that lays flat
- Adjustable drawstring for a custom fit
- Heat Resistant Fiber
- Bacteria-Resistant Net



COLOR SHOWN: 1B (TOP), DR HAZELNUT BROWN, 1B (BOTTOM LEFT TO RIGHT)



SUPER NOVA 24"

AVAILABLE COLORS
1, 1B, 2, S1B/30, DR GINGER BROWN, DR HAZELNUT BROWN, DR HONEY BROWN, DR MULLED WINE, DR2/CHOCOLATE SWIRL

SPECIAL COLORS



COLOR SHOWN: 1B (LEFT), S4/27 (RIGHT)

NOVELIA 16"

AVAILABLE COLORS

1, 1B, 2, 613, 99J, S1B/30, S4/27, 2T1/30, 2T1/425, DR2730, DR425

SPECIAL COLORS



Pretty Quick™

PREMIUM SYNTHETIC FIBER

BANG X PONY

Styling is simple with Quick Pony's trendy Novelia style. A sleek, swooped bang and flipped-out ponytail creates a look that's as stylish as it is fast.

- Clip-On Bangs + Drawstring Construction
- Combs for Secure Hold
- Made with 100% Heat Resistant Fiber

Pre-attached
BANG X PONY



X-Pression
Twisted Up

BORABORA LOCS 24" 3X & 40" 3X

Borabora locs are a new bold crochet braid style available in a variety of eye-catching colors, and waist-length and hip-length options.

- Quick, Long Lasting Protective Style
- Soft Texture & Lightweight
- 100% Handcrafted
- Nonflammable
- Mix & Match with Other Twisted Up Styles
- Premium Synthetic Fiber

FAST & EASY
HIP-LENGTH
LOOKS

COLOR SHOWN : OMBRE 613 (LEFT), 3T OMBRE BERRY (RIGHT)

30
STRANDS



LIGHTWEIGHT

40"

MIX & MATCH WITH
SPRINGY AFRO
TWIST



24"

30"

3X

40"

3X

FAST & EASY
HIP-LENGTH
LOOKS

BORABORA LOCS 40" 3X | BORABORA LOCS 24" 3X

AVAILABLE COLORS :

1, 1B, 2, 4, 613, 2T1B/27, 2T1B/30, MACCHIATO, DRAGON FRUIT, 3T OMBRE PRISM, 3T OMBRE BERRY, OMBRE 613, OMBRE PURPLE, OMBRE SILVER



2T1B/27



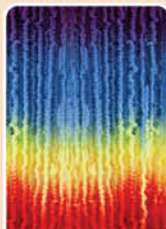
2T1B/30



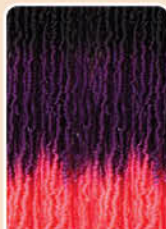
MACCHIATO



DRAGON
FRUIT



3T OMBRE
PRISM



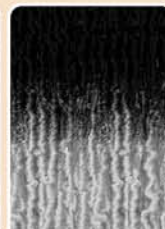
3T OMBRE
BERRY



OMBRE 613



OMBRE
PURPLE



OMBRE
SILVER