

MARCH 2024



Outre





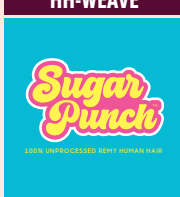


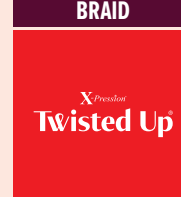



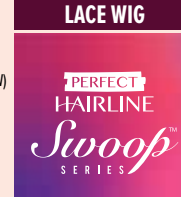






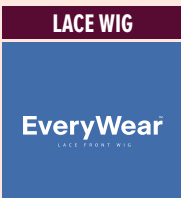


STYLE & COLOR SHOWN : VELVET LUSH_2 (LEFT), 1 (RIGHT)

Outre
85 Oxford Drive,
Moonachie, NJ 07074
USA

VELVET LUSH
LUXURY MEETS RELIABILITY

IN THIS ISSUE

From the makers of the classic Velvet, meet Velvet LUSH. Our smooth, hydrated hair features one-directional cuticles for fewer tangles, increased durability, and thick bundles from root to tip. Wear, shampoo, and re-install this gorgeous Remy hair that's made to last.

HH-WEAVE 03  PURPLE PACK YAKI 10", 12"	HH-WEAVE 04  VELVET LUSH 10", 12", 14", 16" 18", 20", 22", 24"	HH-WEAVE 06  SUGAR PUNCH SINGLES & MULTI BUNDLE STRAIGHT, BODY	BRAID 08  X-Pression Twisted Up SPRINGY AFRO TWIST 16" 3X, 24" 3X
BRAID 10  X-Pression PRE-STRETCHED BRAID 42" 3X PRE-STRETCHED BRAID 52" 3X	BRAID 12  X-Pression Twisted Up BOHO TROPICAL BOUNCY LOCS 20" 3X BOHO TROPICAL ISLAND LOCS 20" 3X BOHO WET&WAVY VIBE BOX BRAID 24" 3X	HH-YAKI 14  OUTRE'S HUMAN HAIR YAKI VELVET MYLK GEM PNY SASHA PREMIUM NEW YAKI PREMIUM PURPLE PACK	LACE WIG 15  Outre 100% FULLY HAND-TIED WHOLE LACE WIG KNOTLESS BOX BRAIDS 36"
LACE WIG 16  Airtied 100% FULLY HAND-TIED WIG HHB-NATURAL BODY WAVE 22" (NEW) HHB-DOMINICAN CURLY 22" HHB-GLAM WAVES 28" HHB-LOOSE BODY WAVE 18" HHB-NATURAL YAKI 12" HHB-PERM YAKI 26" HHB-SLEEK YAKI 28"	LACE WIG 18  PERFECT HAIRLINE Swoop SERIES SWOOP 1 SWOOP 2 SWOOP 3 SWOOP 4 (NEW) SWOOP 5 (NEW)	LACE WIG 20  PERFECT HAIRLINE JEANNIE KALIYA	LACE WIG 22  melted HAIRLINE SWIRLISTA LACE FRONT WIG SWIRL 101 SWIRL 102 SWIRL 103 SWIRL 104 SWIRL 105 SWIRL 106
LACE WIG 26  Outre 5"X5" LACE CLOSURE WIG HHB-BODY WAVE 16" HHB-NATURAL YAKI 14"	LACE WIG 27  SleekLay Part KIMARI	LACE WIG 28  Lace front HARLEY BRENAE DOVE ARDEN LENNOX KIYAH	LACE WIG 32  Lace front TYLER KIONE RITA TANISHA AVANI KAMARI DEANNA, NAYELLA
LACE WIG 36  EveryWear EVERY 34 EVERY 35 EVERY 36	FULL WIG 38  wigpop SYNTHETIC FULL WIG OLLIE RASHIDA	FULL WIG 39  wigpop SYNTHETIC FULL WIG Style SELECTS ROCKY FARRA	

premium purple pack

100% HUMAN HAIR

Purple Pack is back with yaki textures in all new colors.

NEW COLOR

10"

12"



12 280
YAKI

280



12 34
YAKI

34



12 44
YAKI

44

PURPLE PACK YAKI



AVAILABLE LENGTHS & COLORS

PURPLE PACK YAKI 8" :
 1, 130S, 1B, 2, 27, 30, 33, 350, 4, 425, 950, BURGUNDY, C1B/30, C1B/33, C27/30, C4/30
PURPLE PACK YAKI 10" | 12" | 14" :
 1, 130S, 1B, 2, 27, 280, 30, 33, 34, 350, 4, 44, 425, 613, 950, BURGUNDY, C1B/30, C1B/33, C27/30, C27/30/33, C27/613, C4/27/30, C4/30, T1B/27, T1B/2730, T1B/30, T1B/350, T1B/BURGUNDY, T1B/RED
PURPLE PACK YAKI 16" | 18" :
 1, 130S, 1B, 2, 27, 30, 33, 350, 4, 425, 613, 950, BURGUNDY, C1B/30, C1B/33, C27/30/33, C27/613, C4/27/30, C4/30, T1B/27, T1B/2730, T1B/30, T1B/350, T1B/BURGUNDY, T1B/RED
PURPLE PACK YAKI 20" : 1, 1B, 2, 4 - **PURPLE PACK YAKI 22" | 24" | 26" | 28" | 30"** : 1, 1B, 2



VELVET Lush™

REMY

100% REMY HUMAN HAIR

Velvet LUSH provides reliably long-lasting hair that's full from root to tip.



BONE STRAIGHT

DOUBLE DRAWN

REUSABLE

- 100% Remy Human Hair / One-Directional Cuticles
- Moisture-Rich
- Wear, Wash and Repeat
- Smooth, Soft, & Strong
- Healthy Natural Luster
- Full & Thick from Weft to Tip
- Bone Straight
- Double Drawn Hair

AVAILABLE COLORS : 1, 1B, 2

AVAILABLE LENGTHS : 10", 12", 14", 16", 18", 20", 22", 24"



MULTI PACK 3PCS

STRAIGHT



BODY



STRAIGHT

color shown
NATURAL BLACK



AVAILABLE COLORS : NATURAL BLACK, NATURAL
AVAILABLE LENGTHS : 10", 12", 14", 16", 18", 20", 22", 24"



BODY

color shown
NATURAL BLACK



AVAILABLE COLORS : NATURAL BLACK, NATURAL
AVAILABLE LENGTHS : 10", 12", 14", 16", 18", 20", 22", 24"

Sugar Punch™

100% UNPROCESSED REMY HUMAN HAIR

Remy

SUGARPUNCH is simple: gorgeous hair that's reusable, reliable, and thick from root to tip.

- 100% Unprocessed Remy Human Hair
- Double Drawn for Thick, Lush Ends
- One Directional Cuticles for Tangle Resistance
- Smooth, Resilient Hair & Long-Lasting Bundles
- Bleach & Dye, Wash & Reuse
- No Shedding

DOUBLE DRAWN

FOR FULL, THICK ENDS

Smooth, Resilient STRANDS

X-Pression
Twisted Up[®]
SPRINGY AFRO TWIST



NEW COLORS 16" 24"

AMBER APRICOT AQUA MARINE WARM VIOLET

Create natural styles with new color options in our Springy Afro Twist line.

- Made with 100% Kanekalon
- Ready to install-Pre-Fluffed and Pre-Separated
- Tight, springy curls
- Creates countless locs, twist, braid and crochet styles
- Soft Texture
- Lightweight



SPRINGY AFRO TWIST 16" 3X & 24" 3X

SPRINGY AFRO TWIST 16" 3X:

1, 1B, 2, 4, 27, 30, 350, 425, 950, 51, 613, 2T1B/27, 2T1B/30, 2T1B/350, 2T1B/425, 2T1B/BLUE, 2T1B/LIME GREEN, 2T1B/PURPLE, 2T4/30, 2T99J/350, AMBER, APPLE RED, APRICOT, AQUA MARINE, BRIGHT RED, CARNIVAL, CHAMPAGNE AMBER, DEEP BLUE, DEEP PURPLE, HOT PINK, LATTE, LIME GREEN, MERMAID, ORANGE SODA, SHERBET, SNOW BISCUIT, STRIKE, SUNKISS, WARM VIOLET

SPRINGY AFRO TWIST 24" 3X:

1, 1B, 2, 4, 27, 30, 51, 350, 613, 2T1B/27, 2T1B/30, 2T1B/350, 2T1B/425, 2T1B/BLUE, 2T1B/LIME GREEN, 2T1B/PURPLE, 2T4/30, 2T99J/350, AMBER, APPLE RED, APRICOT, AQUA MARINE, BRIGHT RED, DEEP BLUE, DEEP PURPLE, HOT PINK, LIME GREEN, WARM VIOLET





NEW COLORS 42" 52"



X-Pression®

PRE-STRETCHED

Create breathtaking braids with X-Pression's beautiful color options.



- Pre-Stretched & Pre-Layered
- Quickest Install
- Easy to Braid
- Easy to Manage
- Ultra Lightweight
- Hot Water Set Friendly
- Tangle-Free



PRE-STRETCHED BRAID 42" 3X

AVAILABLE COLORS :

1, 130S, 1B, 2, 27, 30, 33, 34, 350, 4, 425, 44, 51, 60, 280, 613, 613A, 99J, 2T1B/130S, 2T1B/27, 2T1B/2730, 2T1B/27613, 2T1B/30, 2T1B/33, 2T1B/350, 2T1B/60, 2T1B/BURGUNDY, 2T1B/FORSYTHIA, 2T1B/INDIGO, 2T1B/LUXE BLUE, 2T1B/MINT VIBES, 2T1B/OLIVE, 2T1B/SHOCKING PINK, AMBER, APPLE RED, APRICOT, AQUA MARINE, BLUE, BURGUNDY, DRAGON FRUIT, FORSYTHIA, INDIGO, LUXE BLUE, MINT VIBES, OLIVE, PURPLE, SHOCKING PINK, VIOLET, WARM VIOLET, M1B/30, M1B/350, M1B/425, M4/30, M4/27/30, M4/27/613, M4/27/30/613, M27/613, M27/30/613, M27/30, M950/425/350/130S

PRE-STRETCHED BRAID 52" 3X

AVAILABLE COLORS :

1, 1B, 2, 4, 27, 30, 33, 34, 44, 51, 60, 99J, 130S, 280, 350, 425, 613, 613A, AMBER, APPLE RED, APRICOT, AQUA MARINE, BLUE, BLUE RASPBERRY, BRIGHT RED, BURGUNDY, DRAGON FRUIT, FORSYTHIA, GLOW NEON HOTPINK, GLOW NEON LEMON YELLOW, GLOW NEON ORANGE, GLOW NEON PUMPKIN, GREEN SHAKE, HOT PINK, INDIGO, LUXE BLUE, MINT VIBES, MOODY SKY BLUE, OLIVE, PARTY PUNCH, PUMPKIN SPICE, PURPLE, PURPLE RAIN, RASTA, ROSE GOLD, SHOCKING PINK, SKY BREEZY, SILVER GRAY, SMOKEY LILAC, SUN FLOWER, SWEDISH BLONDE, UNICORN, VIOLET, WARM VIOLET, 2T1B/130S, 2T1B/27, 2T1B/2730, 2T1B/27613, 2T1B/30, 2T1B/33, 2T1B/350, 2T1B/60, 2T1B/BURGUNDY, 2T1B/FORSYTHIA, 2T1B/INDIGO, 2T1B/LUXE BLUE, 2T1B/MINT VIBES, 2T1B/OLIVE, 2T1B/PURPLE, 2T1B/ROSE GOLD, 2T1B/SHOCKING PINK, 2T1B/SILVER GRAY, M1B/30, M1B/350, M1B/425, M4/30, M4/27/30, M4/27/613, M4/27/30/613, M27/613, M27/30/613, M27/30, M950/425/350/130S



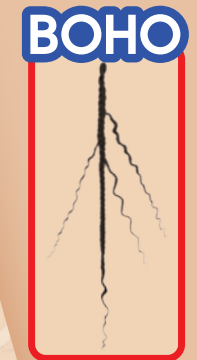
COLOR SHOWN : CT/425

COLOR SHOWN : CT/350

COLOR SHOWN : 2T1B/425

X-Pression
Twisted Up[®]

Get an easy, beachy look with the Boho Tropical Bouncy Locs.
Boho braids are blended with a wet & wavy style for a whole new vibe!



- Premium Synthetic Fiber
- Quick, Long Lasting Protective Style
- Soft Texture
- Lightweight
- 100% Handcrafted
- Nonflammable
- Mix and Match with other items in the Twisted Up line

BOHO TROPICAL BOUNCY LOCS 20" 3X | **BOHO TROPICAL ISLAND LOCS 20" 3X** | **BOHO WET & WAVY VIBE BOX BRAID 24" 3X**

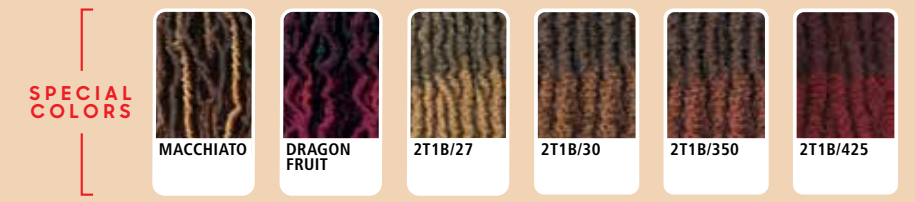
AVAILABLE COLORS
1, 1B, 2, 4, 613, 350, MACCHIATO, DRAGON FRUIT, CT/27, CT/30, CT/350, CT/425

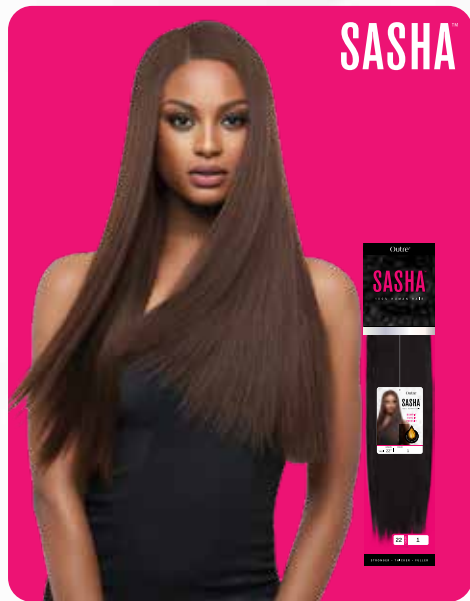
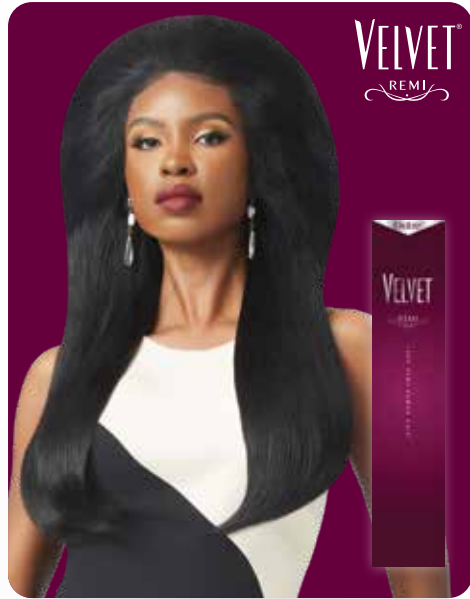


AVAILABLE COLORS
1, 1B, 2, 4, 613, 350, MACCHIATO, DRAGON FRUIT, CT/27, CT/30, CT/350, CT/425



AVAILABLE COLORS
1, 1B, 2, 350, MACCHIATO, DRAGON FRUIT, 2T1B/27, 2T1B/30, 2T1B/350, 2T1B/425

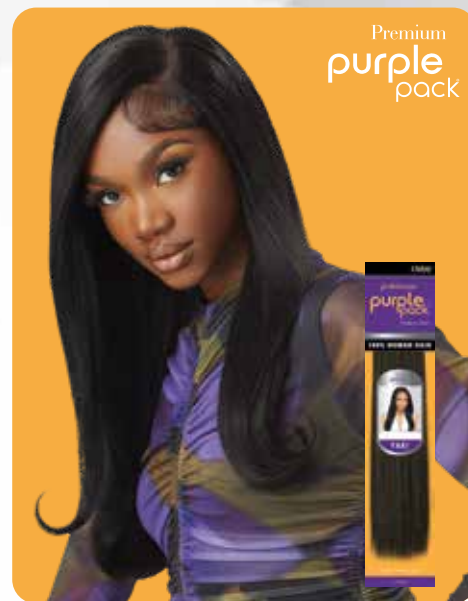




HUMAN HAIR YAKI

MADE TO BLEND EFFORTLESSLY & BEAUTIFULLY.

VELVET
DUVESSA
MYLK
GEM
PREMIUM NEW YAKI
PNY
SASHA
PREMIUM PURPLE PACK



Outre®

100% FULLY HAND-TIED WHOLE LACE WIG

Outre's whole lace, Knotless Box Braid wig parts anywhere and has a breathable cap that's track-free and lays comfortably flat!

- 100% Fully Hand-Tied Whole Lace Wig
- Individually Knotted Strands
- Track-Free / Breathable / Lightweight
- Breathable, Lightweight Cap
- Stretchy, One-Size Fits All Cap
- Freestyle Parting & Styling Versatility
- Soft, Flexible Braids & Baby Hair Included
- Fast, Easy & Effortless Glueless Installs

COLOR SHOWN : 1 (LEFT), DR4/CHOCOLATE CARAMEL (RIGHT)

KNOTLESS BOX BRAIDS 36"



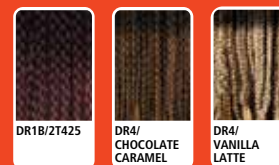
COLOR SHOWN : DR4/CHOCOLATE CARAMEL

AVAILABLE COLORS

- 1,
- 1B,
- 2,
- DR1B/2T425,
- DR4/CHOCOLATE CARAMEL,
- DR4/VANILLA LATTE



100% FULLY HAND-TIED WHOLE LACE WIG





COLOR SHOWN : DR4/CALIFORNIA BLONDE

HHB-NATURAL YAKI 12"

AVAILABLE COLORS

1, 1B, 2, CHOCOLATE SWIRL, NATURAL HONEY, DR2/CREAMY TOFFEE, DR4/CALIFORNIA BLONDE, DRST HONEY BROWN, DRF CHERRY WINE, DRFF2/GINGER BROWN



COLOR SHOWN : DR4/TIRAMISU

HHB-DOMINICAN CURLY 22"

AVAILABLE COLORS

1, 1B, 2, DR CHERRY CRUSH, DR4/TIRAMISU, DRST2/CHOCOLATE CARAMEL, DRST MAPLE BROWN, DRF GINGER BROWN, DRFF4/GOLDEN SWIRL



COLOR SHOWN : DRF GINGER BROWN

HHB-GLAM WAVES 28"

AVAILABLE COLORS

1, 1B, 2, DR4/TIRAMISU, DRST2/CHOCOLATE CARAMEL, DRST MAPLE BROWN, DRF CHERRY WINE, DRF GINGER BROWN, DRFF4/GOLDEN SWIRL



COLOR SHOWN : DR2/CREAMY TOFFEE

HHB-LOOSE BODY WAVE 18"

AVAILABLE COLORS

1, 1B, 2, DEEP BURGUNDY, GINGER BROWN, NATURAL HONEY, DR2/CREAMY TOFFEE, DR4/CALIFORNIA BLONDE, DRST HONEY BROWN, DRFF CHOCOLATE TOFFEE



COLOR SHOWN : DRF GINGER BROWN

HHB-PERM YAKI 26"

AVAILABLE COLORS

1, 1B, 2, DR4/TIRAMISU, DRST2/CHOCOLATE CARAMEL, DRST MAPLE BROWN, DRF CHERRY WINE, DRF GINGER BROWN, DRFF4/GOLDEN SWIRL



COLOR SHOWN : DRFF4/GOLDEN SWIRL

HHB-SLEEK YAKI 28"

AVAILABLE COLORS

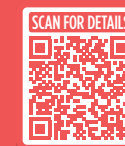
1, 1B, 2, DR4/TIRAMISU, DRST2/CHOCOLATE CARAMEL, DRST MAPLE BROWN, DRF CHERRY WINE, DRF GINGER BROWN, DRFF4/GOLDEN SWIRL



NEW STYLE

COLOR SHOWN : NATURAL HONEY

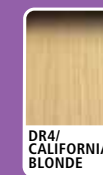
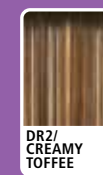
HHB-NATURAL BODY WAVE 22"



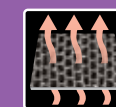
COLOR SHOWN : GINGER BROWN, DR CHOCOLATE TOFFEE, DRF CHERRY WINE, NATURAL HONEY (LEFT TO RIGHT)

AVAILABLE COLORS

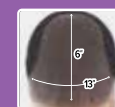
1, 1B, 2, NATURAL HONEY, GINGER BROWN, DR CHOCOLATE TOFFEE, DRF CHERRY WINE, DR2/CREAMY TOFFEE, DR4/CALIFORNIA BLONDE



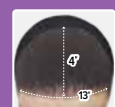
GLUELESS ELASTIC BAND



BREATHABLE MESH CAP



13"X6" LACE AREA



13"X4" LACE AREA

Airtied™

HUMAN HAIR BLEND

100% FULLY HAND-TIED WIG

In-demand styles on a redesigned wig. Airtied is comfortable, lightweight, and track-free!

Comfortably wear the natural body wave style with Airtied's lightweight, vented cap.

- Human Hair Blend
- 100% Fully Hand-Tied with Vanish HD+ Lace Frontal
- Track-Free, Lightweight & Breathable Mesh Cap
- Thinner & More Flexible for a Seamless Melt
- Pre-Plucked Hairline with Smaller Knots
- Contoured Lace Hairline
- Pre-attached Elastic Band for a Glueless Install



VANISH HD+ LACE



SOFT & THIN MASTERFUL MELT



COLOR SHOWN : SWEDISH BLONDE



COLOR SHOWN : BURGUNDY FLAME

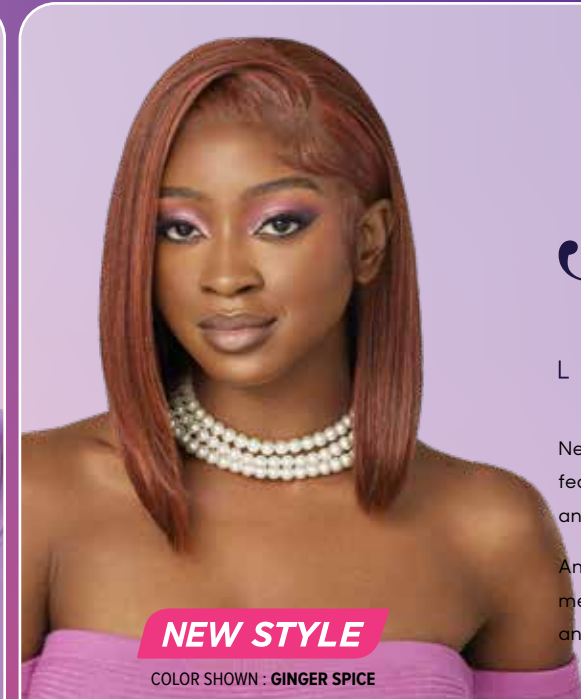


COLOR SHOWN : GINGER SPICE



NEW STYLE

COLOR SHOWN : SWEDISH BLONDE



NEW STYLE

COLOR SHOWN : GINGER SPICE

PERFECT HAIRLINE Swoop SERIES

LACE FRONTAL WIG

New Perfect Hairline - Swoop Series styles feature deeper, wider lace to design your hairline and baby hair swoops YOUR way.

And featuring a specially designed handtie method that will create an effortless lift without any dense teasing for effortless styling!

SWOOP 1 24"



COLOR SHOWN : SWISS BROWN (LEFT), DRFF AMBER SUNSET (RIGHT)



COLOR SHOWN : SWEDISH BLONDE (LEFT & RIGHT)

AVAILABLE COLORS
1, 1B, 2, BURGUNDY FLAME, BUTTERSCOTCH BLONDE, GINGER SPICE, HAZELNUT HONEY, SWEDISH BLONDE, SWISS BROWN, DRFF AMBER SUNSET, DRFF CARAMEL MOCHA



SWOOP 2 22"



COLOR SHOWN : HAZELNUT HONEY (LEFT), 1B (RIGHT)



COLOR SHOWN : BURGUNDY FLAME (LEFT & RIGHT)

AVAILABLE COLORS
1, 1B, 2, BURGUNDY FLAME, BUTTERSCOTCH BLONDE, GINGER SPICE, HAZELNUT HONEY, SWEDISH BLONDE, SWISS BROWN, DRFF AMBER SUNSET, DRFF CARAMEL MOCHA



SWOOP 3 26"



COLOR SHOWN : BUTTERSCOTCH BLONDE (LEFT), GINGER SPICE (RIGHT)



COLOR SHOWN : GINGER SPICE (LEFT & RIGHT)

AVAILABLE COLORS
1, 1B, 2, BURGUNDY FLAME, BUTTERSCOTCH BLONDE, GINGER SPICE, HAZELNUT HONEY, SWEDISH BLONDE, SWISS BROWN, DRFF AMBER SUNSET, DRFF CARAMEL MOCHA



SWOOP 4 18"



COLOR SHOWN : SWISS BROWN (LEFT), DRFF AMBER SUNSET (RIGHT)



COLOR SHOWN : SWEDISH BLONDE (LEFT & RIGHT)

AVAILABLE COLORS
1, 1B, 2, BURGUNDY FLAME, BUTTERSCOTCH BLONDE, GINGER SPICE, HAZELNUT HONEY, SWEDISH BLONDE, SWISS BROWN, DRFF AMBER SUNSET, DRFF CARAMEL MOCHA



SWOOP 5 14"



COLOR SHOWN : 2 (LEFT), HAZELNUT HONEY (RIGHT)



COLOR SHOWN : GINGER SPICE (LEFT & RIGHT)

AVAILABLE COLORS
1, 1B, 2, BURGUNDY FLAME, BUTTERSCOTCH BLONDE, GINGER SPICE, HAZELNUT HONEY, SWEDISH BLONDE, SWISS BROWN, DRFF AMBER SUNSET, DRFF CARAMEL MOCHA



PERFECTED HAND-TIED LACE FRONTAL, HAIRLINE & SIDEBURNS

- Fully Hand-Tied 13" x 4" Frontal
- Deeper, Wider, Ear-to-Ear Soft HD Lace
- Pre-Plucked with Precision
- Super Natural Shape and Density

EASY STYLING & SIMPLE INSTALLS

- More HD Lace Space to Swoop your Baby Hairs
- Pre-Styled Volume Lift at Lace Area
- Pre-Attached Wide Elastic Band for Glueless Installs
- Heat-Styling Friendly



MORE LACE SPACE FOR SWOOPS

DEEPER, MORE HAND-TIED LACE AREA & BABY HAIRS STYLING SPACE





COLOR SHOWN : DRST CHOCOLATE SWIRL (LEFT), DRFF4/COPPER BALAYAGE (RIGHT)



COLOR SHOWN : BLUE ANGEL



PERFECT HAIRLINE™

FULLY HAND-TIED 13"X6" LACE WIG

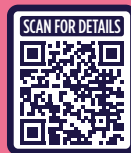
Jeannie and Kaliya are flattering styles with perfect hairlines women will want to show off.

- Fully Hand-Tied 13" x 6" and 13" x 4" Frontals
- Ear-to-Ear Soft HD Transparent Lace
- Natural Baby Hairs
- Comes With a Pre-Attached Elastic Band
- Fast, Easy & Effortless Glueless Installs
- Pre-Plucked Hairline
- Heat-Styling Friendly

13" X 4"

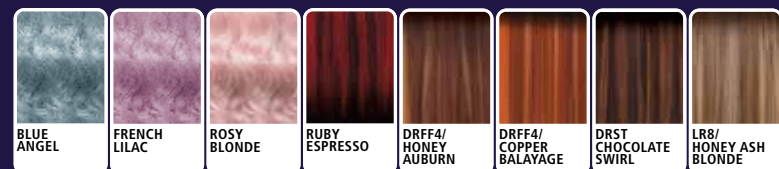


JEANNIE 14"



COLOR SHOWN : 1B , DRFF4/COPPER BALAYAGE, DRFF4/COPPER BALAYAGE (LEFT TO RIGHT)

AVAILABLE COLORS
1, 1B, 2, BLUE ANGEL, FRENCH LILAC, ROSY BLONDE, RUBY ESPRESSO, DRFF4/HONEY AUBURN, DRFF4/COPPER BALAYAGE, DRST CHOCOLATE SWIRL, LR8/HONEY ASH BLONDE

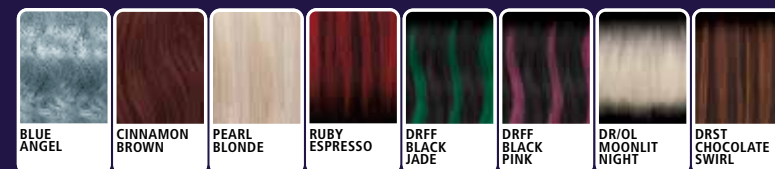


KALIYA 22"



COLOR SHOWN : DRST CHOCOLATE SWIRL, DR/OL MOONLIT NIGHT, DR/OL MOONLIT NIGHT (LEFT TO RIGHT)

AVAILABLE COLORS
1, 1B, 2, BLUE ANGEL, CINNAMON BROWN, PEARL BLONDE, RUBY ESPRESSO, DRFF BLACK JADE, DRFF BLACK PINK, DR/OL MOONLIT NIGHT, DRST CHOCOLATE SWIRL



13" X 6"





COLOR SHOWN : SPICED COGNAC



COLOR SHOWN : GINGER AUBURN



COLOR SHOWN : DR GINGER TOFFEE

melted
HAIRLINE®
SWIRLISTA™
L A C E F R O N T W I G

We perfected the deeper side hairline.
You perfect your baby hairs swirls.

PERFECTED HAND-TIED LACE PART, HAIRLINE & SIDEBURNS

- More Space to Finesse your Baby Hairs
- Pre-Plucked with Precision
- Super Natural Shape and Density
- 5" Deep C-Shape Parting

BEAUTIFUL BLENDING & EASY INSTALLS

- Pre-Attached Wide Elastic Band for Glueless Installs
- Redesigned ComfortFit Ear Contour
- Soft HD Transparent Lace

SWIRL 101 26"



SWIRL 102 28"



SWIRL 103 22"



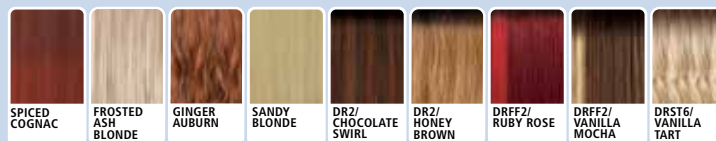
COLOR SHOWN : FROSTED ASH BLONDE, DR2/HONEY BROWN, SPICED COGNAC (LEFT TO RIGHT)

AVAILABLE COLORS
1, 1B, 2, SPICED COGNAC, FROSTED ASH BLONDE, GINGER AUBURN, SANDY BLONDE, DR2/CHOCOLATE SWIRL, DR2/HONEY BROWN, DRFF2/RUBY ROSE, DRFF2/VANILLA MOCHA, DRST6/VANILLA TART



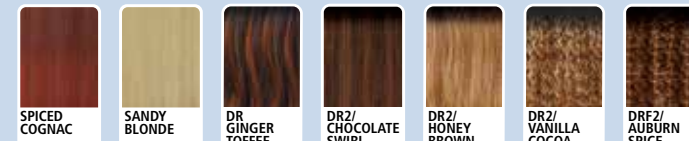
COLOR SHOWN : DRST6/VANILLA TART, DR2/CHOCOLATE SWIRL, GINGER AUBURN (LEFT TO RIGHT)

AVAILABLE COLORS
1, 1B, 2, SPICED COGNAC, FROSTED ASH BLONDE, GINGER AUBURN, SANDY BLONDE, DR2/CHOCOLATE SWIRL, DR2/HONEY BROWN, DRFF2/RUBY ROSE, DRFF2/VANILLA MOCHA, DRST6/VANILLA TART

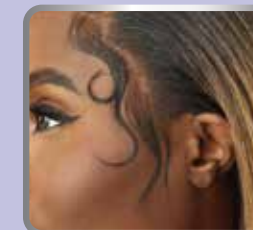


COLOR SHOWN : DR2/VANILLA COCOA, 1B, DR GINGER TOFFEE (LEFT TO RIGHT)

AVAILABLE COLORS
1, 1B, 2, SPICED COGNAC, SANDY BLONDE, DR GINGER TOFFEE, DR2/CHOCOLATE SWIRL, DR2/HONEY BROWN, DR2/VANILLA COCOA, DR2/AUBURN SPICE



DEEPER, WIDER
HAND-TIED
LACE HAIRLINE



5" DEEP
C-SHAPE
PARTING

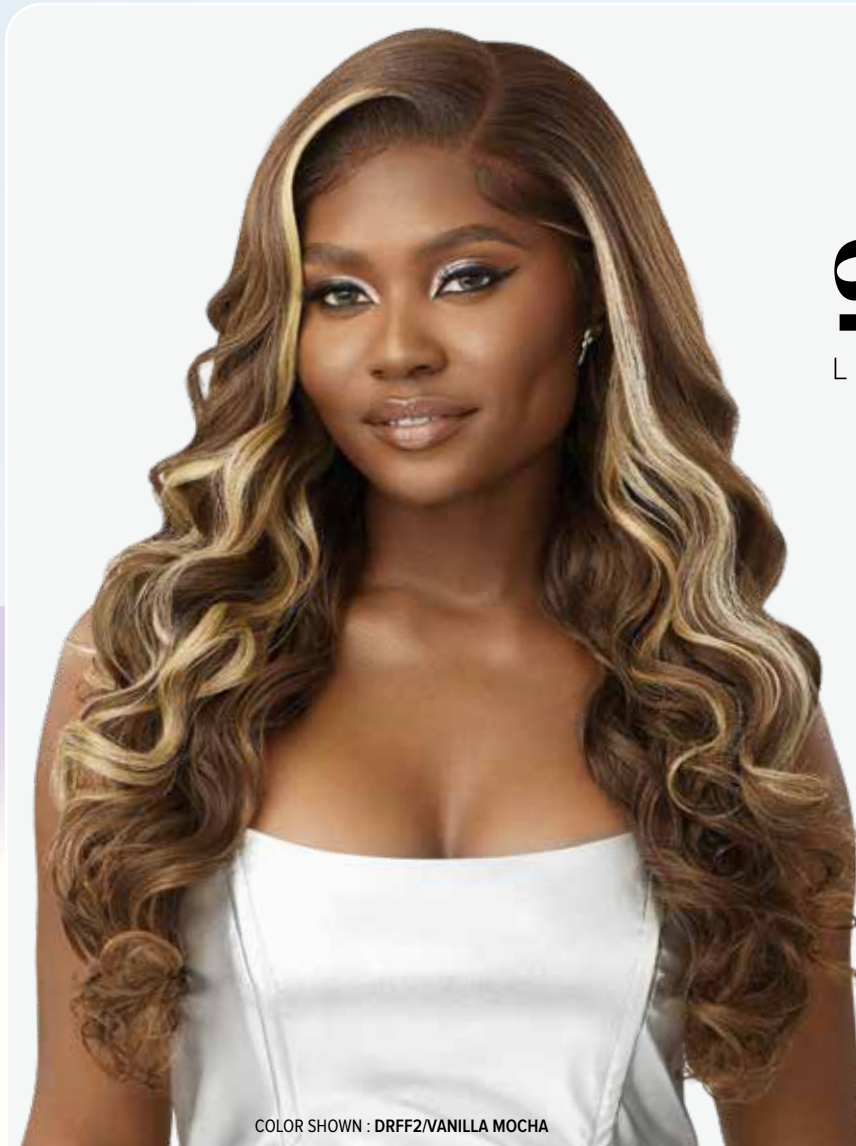




COLOR SHOWN : GOLDEN AMBER



COLOR SHOWN : DRFF2/RUBY ROSE



COLOR SHOWN : DRFF2/VANILLA MOCHA

melted HAIRLINE[®]
SWIRLISTA™
 L A C E F R O N T W I G

Swirlista has ready-to-slay styles with an upgraded hairline made to swirl your baby hairs.

PERFECTED HAND-TIED LACE PART, HAIRLINE & SIDEBURNS

- More Space to Finesse your Baby Hairs
- Pre-Plucked with Precision
- Super Natural Shape and Density
- 5" Deep C-Shape Parting

BEAUTIFUL BLENDING & EASY INSTALLS

- Pre-Attached Wide Elastic Band for Glueless Installs
- Redesigned ComfortFit Ear Contour
- Soft HD Transparent Lace

SWIRL 104 20"



COLOR SHOWN : DR2/CHOCOLATE SWIRL, FROSTED ASH BLONDE, GOLDEN AMBER (LEFT TO RIGHT)

AVAILABLE COLORS
 1, 1B, 2, FROSTED ASH BLONDE, GOLDEN AMBER, SANDY BLONDE, SPICED COGNAC, DR2/CHOCOLATE SWIRL, DR2/HONEY BROWN, DRFF2/RUBY ROSE, DRFF2/VANILLA MOCHA, DRST6/VANILLA TART



SWIRL 105 14"



COLOR SHOWN : SANDY BLONDE, 1B, SANDY BLONDE (LEFT TO RIGHT)

AVAILABLE COLORS
 1, 1B, 2, FROSTED ASH BLONDE, GOLDEN AMBER, SANDY BLONDE, SPICED COGNAC, DR2/CHOCOLATE SWIRL, DR2/HONEY BROWN, DRFF2/RUBY ROSE, DRFF2/VANILLA MOCHA, DRST6/VANILLA TART

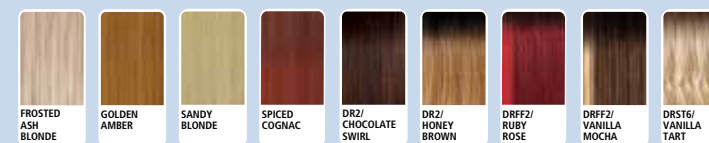


SWIRL 106 24"

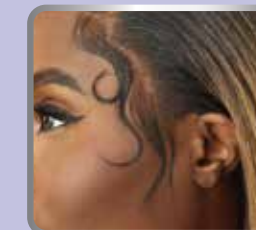


COLOR SHOWN : DRST6/VANILLA TART, SPICED COGNAC, DRFF2/VANILLA MOCHA (LEFT TO RIGHT)

AVAILABLE COLORS
 1, 1B, 2, FROSTED ASH BLONDE, GOLDEN AMBER, SANDY BLONDE, SPICED COGNAC, DR2/CHOCOLATE SWIRL, DR2/HONEY BROWN, DRFF2/RUBY ROSE, DRFF2/VANILLA MOCHA, DRST6/VANILLA TART



DEEPER, WIDER
 HAND-TIED
 LACE HAIRLINE



5" DEEP
 C-SHAPE
 PARTING



Outre®

100% HUMAN HAIR BLEND

5"x5" LACE CLOSURE WIG



COLOR SHOWN : DRFF2/RUBY ROSE

Go glueless and freely part our NEW Body Wave and Natural Yaki 5" x 5" closure wigs.

- 100% Human Hair Blend
- 5"x5" Lace Area
- Part Your Way - Left, Right, or Center
- Hand-Tied HD Lace
- Natural Pre-Plucked Hairline with Baby Hair
- Pre-Attached Elastic Band for a Flat Fit
- Fast, Easy & Effortless Glueless Installs



HHB-BODY WAVE 16"



COLOR SHOWN : DRFF2/VANILLA MOCHA, 1B (LEFT TO RIGHT)



COLOR SHOWN : DRFF2/RUBY ROSE, DRFF2/RUBY ROSE (LEFT TO RIGHT)

AVAILABLE COLORS

1, 1B, 2, SANDY BLONDE, GINGER AUBURN, DR2/CHOCOLATE SWIRL, DRFF2/HONEY GINGER BROWN, DRFF2/RUBY ROSE, DRFF2/VANILLA MOCHA



COLOR SHOWN : 1B

HHB-NATURAL YAKI 14"



COLOR SHOWN : GINGER AUBURN, SANDY BLONDE (LEFT TO RIGHT)



COLOR SHOWN : 1B, 1B (LEFT TO RIGHT)

AVAILABLE COLORS

1, 1B, 2, SANDY BLONDE, GINGER AUBURN, DR2/CHOCOLATE SWIRL, DRFF2/HONEY GINGER BROWN, DRFF2/RUBY ROSE, DRFF2/VANILLA MOCHA



SleekLay®

LACE FRONT WIG Part

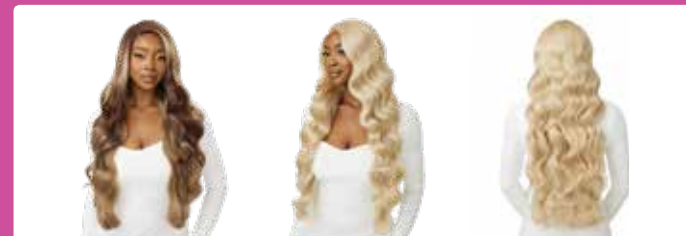


COLOR SHOWN : SOFT BLONDE

Kimari comes with a specially designed Deep-C parting space and 7 gorgeous blonde shades.

- Wider Hand-Tied Lace Part
- Deep C-Shape Side Parting
- Extra Hand-Tied Lace Edges
- Hump-Less, Laid finish
- Pre-Plucked Hairline
- Natural Baby Hairs
- Pre-Attached Wide Elastic Band for Glueless Installs
- Heat-Friendly

KIMARI 32"



COLOR SHOWN : 3DRFF WHEAT BLONDE, SOFT BLONDE, SOFT BLONDE (LEFT TO RIGHT)

AVAILABLE COLORS

1, 1B, 2, SOFT BLONDE, DR4/CREAM BLONDE, 3DRFF AMBER BLONDE, 3DRFF BUTTERY BLONDE, 3DRFF IVORY BLONDE, 3DRFF SANDSTONE BLONDE, 3DRFF WHEAT BLONDE



—THE— BLONDE COLLECTION





COLOR SHOWN : FIRE COPPER



COLOR SHOWN : DR CHESTNUT DIP



COLOR SHOWN : DRFF4/HONEY AUBURN



Lace front
LACE FRONT WIG

Harley features edgy layers and exciting colors from the iconic Lace Front Brand.

Brenae's airy curls are paired with fresh new colors and a trendy butterfly cut.

Dove has cascading curls in special, salon-inspired colors like Chocolate Honey and Red Velvet.

- HD Transparent Lace
- Breathable, Comfortable Cap
- Natural Baby Hairs
- Pre-Plucked Parting
- Fast, Easy & Effortless Glueless Installs
- Heat Resistant Fiber

HARLEY 18"



COLOR SHOWN : PEARLY PINK, FIRE COPPER, FIRE COPPER (LEFT TO RIGHT)

AVAILABLE COLORS
1, 1B, 2, BLUE ANGEL, COPPER BLONDE, CREAM SODA, FIRE COPPER, PEARLY PINK, RED VELVET, DRST2/CHOCOLATE CARAMEL



BRENAE 20"



COLOR SHOWN : DR4/HONEY DIP, DR CHESTNUT DIP, DR CHESTNUT DIP (LEFT TO RIGHT)

AVAILABLE COLORS
1, 1B, 2, COPPER BROWN, PEARL BLONDE, RED VELVET, DR CHESTNUT DIP, DR4/HONEY DIP, DRFF BLACK JADE, DRFF BLACK PINK, DRFF4/ROSE BROWN

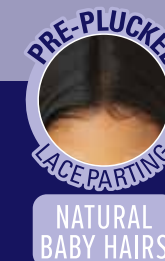
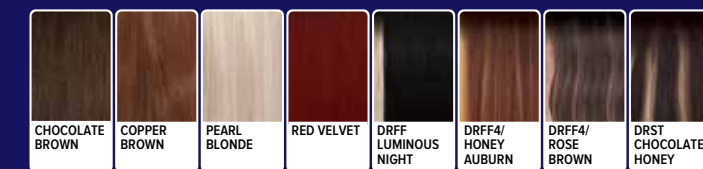


DOVE 26"



COLOR SHOWN : CHOCOLATE BROWN, CHOCOLATE BROWN, CHOCOLATE BROWN (LEFT TO RIGHT)

AVAILABLE COLORS
1, 1B, 2, CHOCOLATE BROWN, COPPER BROWN, PEARL BLONDE, RED VELVET, DRFF LUMINOUS NIGHT, DRFF4/HONEY AUBURN, DRFF4/ROSE BROWN, DRST CHOCOLATE HONEY





COLOR SHOWN : DR HAZELNUT BROWN



COLOR SHOWN : DRFF RED VELVET



COLOR SHOWN : ROSY BLONDE



Lace front[®]
LACE FRONT WIG

Arden is a simple yet sexy style that can be worn anywhere!

Lennox combines curtain bangs with captivating colors.

Kiyah's style is hot! Featuring waves, a blunt bob, and sizzling shades.

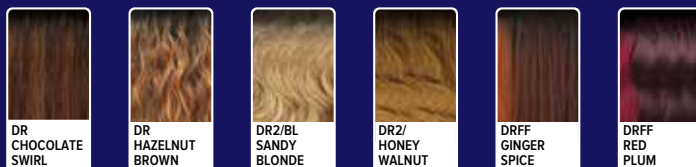
- HD Transparent Lace
- Breathable, Comfortable Cap
- Natural Baby Hairs
- Pre-Plucked Parting
- Fast, Easy & Effortless Glueless Installs
- Heat Resistant Fiber

ARDEN 20"



COLOR SHOWN : DRFF GINGER SPICE, DR HAZELNUT BROWN, DR HAZELNUT BROWN (LEFT TO RIGHT)

AVAILABLE COLORS
1, 1B, 2, DR CHOCOLATE SWIRL, DR HAZELNUT BROWN, DR2/BL SANDY BLONDE, DR2/HONEY WALNUT, DRFF GINGER SPICE, DRFF RED PLUM

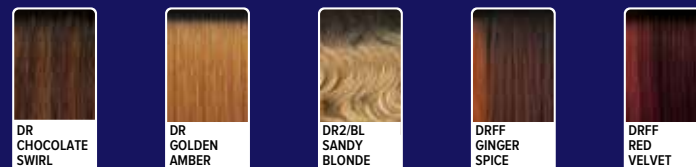


LENNOX 26"



COLOR SHOWN : DR2/BL SANDY BLONDE, DRFF RED VELVET, DRFF RED VELVET (LEFT TO RIGHT)

AVAILABLE COLORS
1, 1B, 2, 613, DR CHOCOLATE SWIRL, DR GOLDEN AMBER, DR2/BL SANDY BLONDE, DRFF GINGER SPICE, DRFF RED VELVET



KIYAH 12"



COLOR SHOWN : COPPER BROWN, DRFF BLACK JADE, ROSY BLONDE, ROSY BLONDE (LEFT TO RIGHT)

AVAILABLE COLORS
1, 1B, 2, BLUE ANGEL, COPPER BROWN, ICE BLONDE, RED VELVET, ROSY BLONDE, DRFF BLACK JADE, DRFF BLACK PINK, DRST CHOCOLATE SWIRL



NATURAL BABY HAIRS





COLOR SHOWN : ICE BLONDE



COLOR SHOWN : FIRE COPPER



COLOR SHOWN : DR2/CREAMY TOFFEE



Lace front[®]
LACE FRONT WIG

Tyler is a sleek style in the trendy butterfly cut. Colors like cream soda and fire copper make Kione's curls even more dazzling. Rita and Tanisha have lush layers that create movement, volume, and glamour.

- HD Transparent Lace
- Breathable, Comfortable Cap
- Natural Baby Hairs
- Pre-Plucked Parting
- Fast, Easy & Effortless Glueless Installs
- Heat Resistant Fiber

TYLER 18"



COLOR SHOWN : RUBY ESPRESSO, ICE BLONDE, ICE BLONDE (LEFT TO RIGHT)

KIONE 14"



COLOR SHOWN : S4/30, FIRE COPPER, FIRE COPPER (LEFT TO RIGHT)

RITA 16"



COLOR SHOWN : FIRE COPPER, DR2/CREAMY TOFFEE, DR2/CREAMY TOFFEE (LEFT TO RIGHT)

TANISHA 26"



COLOR SHOWN : DRF PURPLE, DRFF ORANGE FLAME, DRFF ORANGE FLAME (LEFT TO RIGHT)

AVAILABLE COLORS
1, 1B, 2, RED VELVET, TIRAMISU, DR4/ASH BROWN, DRF HOT PINK, DRF PURPLE, DRFF GOLDEN GINGER, DRFF MOONLIT NIGHT, DRFF ORANGE FLAME, DRST2/CHOCOLATE CARAMEL



AVAILABLE COLORS
1, 1B, 2, COPPER BROWN, HONEY BUTTER, ICE BLONDE, RUBY ESPRESSO, DRFF BLACK JADE, DRFF BLACK PINK, DRFF LUMINOUS NIGHT, DRST CHOCOLATE SWIRL



AVAILABLE COLORS
1, 1B, 2, 34, S4/30, CREAM SODA, FIRE COPPER, GINGER SWIRL, DR RED WINE, DR2/CREAMY TOFFEE



AVAILABLE COLORS
1, 1B, 2, CHOCOLATE SWIRL, CREAM SODA, FIRE COPPER, GINGER BROWN, DR RED VELVET, DR2/CREAMY TOFFEE, ST BROWN GRAY



NATURAL BABY HAIRS





COLOR SHOWN : DRFF MIDNIGHT FROST



COLOR SHOWN : CREAM SODA



COLOR SHOWN : DR2/CHOCOLATE SWIRL



COLOR SHOWN : CALIFORNIA BLONDE



Lace front[®]
LACE FRONT WIG

Avani includes tousled, medium-large curls that frame the face.

Take the multi-length look to the next level with Deanna.

Try Kamari's gently curled, mid-length look with a side part.

Nayella is sleek, chic and coupled with feathered curtain bangs.

- HD Transparent Lace
- Breathable, Comfortable Cap
- Natural Baby Hairs
- Pre-Plucked Parting
- Fast, Easy & Effortless Glueless Installs
- Heat Resistant Fiber

AVANI 22"



COLOR SHOWN : DRFF CHOCOLATE KISS, DRFF MIDNIGHT FROST, DRFF MIDNIGHT FROST (LEFT TO RIGHT)

DEANNA 22"



COLOR SHOWN : DRST HONEY BROWN, CREAM SODA, CREAM SODA (LEFT TO RIGHT)

KAMARI 20"



COLOR SHOWN : TIRAMISU, TIRAMISU, TIRAMISU (LEFT TO RIGHT)

NAYELLA 16"



COLOR SHOWN : RED VELVET, CALIFORNIA BLONDE, CALIFORNIA BLONDE (LEFT TO RIGHT)

AVAILABLE COLORS
1, 1B, 2, CALIFORNIA BLONDE, CHOCOLATE SWIRL, GINGER BROWN, PEARLY PINK, RED VELVET, DR2/CREAMY TOFFEE, DRFF ORANGE FLAME, DRST HONEY BROWN



AVAILABLE COLORS

1, 1B, 2,
COSMO RED,
GINGER COPPER,
GOLDEN AMBER,
TIRAMISU,
DR4/BL SOFT BLONDE,
DRFF CHOCOLATE KISS,
DRFF MIDNIGHT FROST,
DRFF2/BRONDE BALAYAGE



AVAILABLE COLORS

1, 1B, 2,
COPPER BLONDE,
CREAM SODA,
GINGER BROWN,
PEARLY PINK,
RED VELVET,
DR JADE BLUE,
DRF PURPLE,
DRST HONEY BROWN



AVAILABLE COLORS

1, 1B, 2,
GOLDEN AMBER,
HAVANA BROWN,
TIRAMISU,
DR PINK BLUSH,
DR2/CHOCOLATE SWIRL,
DR4/2T PUMPKIN SPICE,
DR4/BL SOFT BLONDE,
DRFF2/CHERRY RED



NATURAL BABY HAIRS





COLOR SHOWN : SPICED COGNAC



COLOR SHOWN : GOLDEN AMBER



COLOR SHOWN : 1B

EveryWear™

LACE FRONT WIG

Go anywhere with these new EveryWear styles!

- Ear-to-Ear HD Lace
- Easy, Goes-with-Everything Style
- Heat Resistant Fiber



EVERY34 24"



EVERY35 22"



EVERY36 32"



COLOR SHOWN : DR4/BLONDE LATTE MELT, SPICED COGNAC, SPICED COGNAC (LEFT TO RIGHT)



COLOR SHOWN : DR4/BLONDE LATTE MELT, GOLDEN AMBER, GOLDEN AMBER (LEFT TO RIGHT)



COLOR SHOWN : 1B, 1B, 1B (LEFT TO RIGHT)

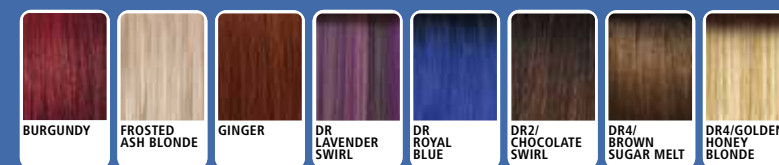
AVAILABLE COLORS
1, 1B, 2, FROSTED ASH BLONDE, GINGER AUBURN, SPICED COGNAC, DR2/HAZELNUT BROWN, DR2/SUNSET COPPER, DRFF2/RUBY ROSE, DR4/BLONDE LATTE MELT



AVAILABLE COLORS
1, 1B, 2, 99J, GOLDEN AMBER, DR GINGER BROWN, DR PAPRIKA SPICE, DR2/CHOCOLATE SWIRL, DR4/BLONDE LATTE MELT



AVAILABLE COLORS
1, 1B, 2, BURGUNDY, FROSTED ASH BLONDE, GINGER, DR LAVENDER SWIRL, DR ROYAL BLUE, DR2/CHOCOLATE SWIRL, DR4/BROWN SUGAR MELT, DR4/GOLDEN HONEY BLONDE



wigpop®

SYNTHETIC FULL WIG

Get the super on-trend shaggy look with the new Ollie and Rashida wigs.

- Great Value
- Ready to Wear & Go
- Range of Trendy Colors & Styles
- Heat-Styling Friendly



COLOR SHOWN : SOFT BLONDE



COLOR SHOWN : COPPER



COLOR SHOWN : DRF PURPLE



COLOR SHOWN : MILK CHOCOLATE

wigpop®

Style SELECTS

SYNTHETIC FULL WIG

Rocky and Farra have razor cut bangs, extra layers and waves + a naturally parted look!

- Easy to Wear, Elevated Looks
- Special Styles: More curls, more textures, more length
- Ready to Wear & Go
- Heat-Styling Friendly

OLLIE 12"



COLOR SHOWN : SOFT BROWN, SOFT BLONDE, SOFT BLONDE (LEFT TO RIGHT)

AVAILABLE COLORS
1, 1B, 2, BURNT COPPER, SOFT BLONDE, SOFT BROWN, DR RED BURGUNDY, DRP BLUE DIAMOND, DRP VIOLET DREAM

RASHIDA 12"



COLOR SHOWN : 2, COPPER, COPPER (LEFT TO RIGHT)

AVAILABLE COLORS
1, 1B, 2, BLUE MOON, CHOCOLATE SWIRL, COPPER, PURPLE DREAM, RED VELVET, SOFT BLONDE

ROCKY 18"



COLOR SHOWN : FIRE COPPER, DRF PURPLE, DRF PURPLE (LEFT TO RIGHT)

AVAILABLE COLORS
1, 1B, 2, CHOCOLATE SWIRL, COPPER BLONDE, CREAM SODA, FIRE COPPER, GINGER BROWN, RED VELVET, DR JADE GREEN, DRF PURPLE

FARRA 20"



COLOR SHOWN : PEARLY PINK, MILK CHOCOLATE, MILK CHOCOLATE (LEFT TO RIGHT)

AVAILABLE COLORS
1, 1B, 2, BLUE ANGEL, COPPER BLONDE, CREAM SODA, FIRE COPPER, GINGER BROWN, MILK CHOCOLATE, PEARLY PINK, RED VELVET



BODY
NATURAL BLACK

STRAIGHT
NATURAL

Sugar Punch™

100% UNPROCESSED REMY HUMAN HAIR

Remy

The Search Ends Here For Lusciously Full Hair.

- Thick from Root to Tip.
- Reusable & Reliable.

DOUBLE DRAWN

FOR FULL, THICK ENDS

Smooth, Resilient STRANDS



SINGLE PACK

AVAILABLE COLORS : NATURAL BLACK, NATURAL
AVAILABLE LENGTHS : 10", 12", 14", 16", 18", 20", 22", 24"

MULTI PACK 3PCS

AVAILABLE COLORS : NATURAL BLACK, NATURAL
AVAILABLE LENGTHS : 10", 12", 14" / 12", 14", 16" / 14", 16", 18" / 16", 18", 20" / 18", 20", 22" / 20", 22", 24"