

Outre®

MAY 2024



STYLE & COLOR SHOWN:
QUICK WEAVE KIORA | 1B (LEFT)
QUICK WEAVE MISHA | DR CHOCOLATE SWIRL (CENTER)
QUICK WEAVE SHANAY | DR2/ CREAMY TOFFEE (RIGHT)

Outre
85 Oxford Drive,
Moonachie, NJ 07074
USA

SUMMER 2024 The Leave-Out Comeback

IN THIS ISSUE

Leave-outs are back this season!

Sew-ins and glued-in tracks are trending on TikTok and Instagram, giving women realistic styles that showcase their hairline. With leave-out's popularity rising this spring and summer, it's time to re-introduce Quick Weave. This iconic brand is known for its 60-second, sew-in look and endless styling options.

With a collection developed over decades, and new styles, textures, and curls constantly added - it's the perfect line for those who want natural-looking styles that blend beautifully.

BRAID 03 TROPICAL BOUNCY LOCS 22" 3X NEW COLORS	BRAID 04 SPRINGY AFRO TWIST 16" 3X, 24" 3X NEW COLORS	BRAID 05 PRE-STRETCHED BRAID 42" 3X PRE-STRETCHED BRAID 52" 3X NEW COLORS	BRAID 06 BOX BRAID LOOSE WAVE 24" 3X BOHO ISLAND TWIST 22" 3X
BRAID 08 BOHO WET & WAVY VIBE BEACH BRAID 30" 3X BOHO WET & WAVY VIBE OCEAN BRAID 24" 3X	HH-BULK 10 ALL BULK ITEMS My TRESSSES 100% UNPROCESSED HUMAN HAIR GOLD LABEL PRE-STRETCHED THIS UNPROCESSED HUMAN HAIR BULK	HH-WEAVE 12 4" X 4" LACE CLOSURE 10", 12", 14" 13" X 4" LACE FRONTAL 10", 12", 14" Sugar Punch	HH-FULL WIG 14 HH-AYSEL premium DUBY WIG 100% HUMAN HAIR
LACE WIG 15 BOHO BOX BRAIDS 28" 100% FULLY HAND-TIED WHOLE LACE WIG Outre	HH-LACE WIG 16 HHB-DREAM CURLS 20" HHB-NATURAL YAKI 22" 5" X 5" LACE CLOSURE WIG Outre	LACE WIG 18 REEVA LENAJ MAILAH PERFECT HAIRLINE	LACE WIG 20 HALI melted HAIRLINE LACE FRONT WIG
LACE WIG 21 SWIRL 110 melted HAIRLINE SWIRLISTA LACE FRONT WIG	LACE WIG 22 HASEENA LEXA CARMEL Lace front	LACE WIG 24 EVERY38 EVERY39 EVERY40 EveryWear LACE FRONT WIG	FULL WIG 26 IVAN PAGE wigpop SYNTHETIC FULL WIG
CONVERTI-CAP 28 CURLY BLISS CURLS ALLURE converti-cap	HALF WIG 30 CYPRESS HAZEL KIORA MISHA OLEANA SHAMAY Quick WEAVE	PONYTAIL 34 JESS LYLA MAY CORRIE Outre Pretty Quick PREMIUM SYNTHETIC FIBER PONY	PONYTAIL 38 KINKY STRAIGHT 28" LOOSE BODY 28" Outre Pretty Quick PREMIUM SYNTHETIC FIBER WRAPPONY



COLOR SHOWN : MACCHIATO

X-Pression Twisted Up®

Refresh your look with Boho Tropical Bouncy Locs in brand new colors.

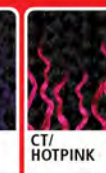
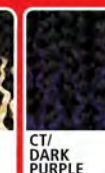
- Premium Synthetic Fiber
- Quick, Long Lasting Protective Style
- Soft Texture
- Lightweight
- 100% Handcrafted
- Nonflammable
- Mix and Match with other items in the Twisted Up line

NEW COLORS



TROPICAL BOUNCY LOCS 22" 3X

AVAILABLE COLORS
1, 1B, 2, 4, 613, 2T1B/27, 2T1B/30, 2T1B/425, CT/350, CT/613, CT/DARK PURPLE, CT/HOTPINK, MACCHIATO, DRAGON FRUIT



X-Pression® Twisted Up® SPRINGY AFRO TWIST



Take your twists and locs to the next level with the new thrilling colors from Springy Afro Twist.

- Made with 100% Kanekalon
- Tight, springy curls
- Soft Texture
- Ready to install-Pre-Fluffed and Pre-Separated
- Creates countless locs, twist, braid and crochet styles
- Lightweight

NEW COLORS 16" 24"



SPRINGY AFRO TWIST 16" 3X & 24" 3X

SPRINGY AFRO TWIST 16" 3X:

1, 1B, 2, 4, 27, 30, 350, 425, 950, 51, 613, 2T1B/27, 2T1B/30, 2T1B/350, 2T1B/425, 2T1B/BLUE, 2T1B/LIME GREEN, 2T1B/PURPLE, 2T4/30, 2T99J/350, AMBER, APPLE RED, APRICOT, AQUA MARINE, BRIGHT RED, CARNIVAL, CHAMPAGNE AMBER, DEEP BLUE, DEEP PURPLE, HOT PINK, LATTE, LIME GREEN, MERMAID, ORANGE SODA, SHERBERT, SNOW BISCUIT, STRIKE, SUNKISS, WARM VIOLET, WILD CHERRY

SPRINGY AFRO TWIST 24" 3X:

1, 1B, 2, 4, 27, 30, 51, 350, 613, 2T1B/27, 2T1B/30, 2T1B/350, 2T1B/425, 2T1B/BLUE, 2T1B/LIME GREEN, 2T1B/PURPLE, 2T4/30, 2T99J/350, AMBER, APPLE RED, APRICOT, AQUA MARINE, BRIGHT RED, DEEP BLUE, DEEP PURPLE, HOT PINK, LIME GREEN, WARM VIOLET, WILD CHERRY

X-Pression® PRE-STRETCHED



Express yourself in a vibrant new way with these electric colors from X-Pression.

- Pre-Stretched & Pre-Layered
- Quickest Install
- Easy to Braid
- Easy to Manage
- Ultra Lightweight
- Hot Water Set Friendly
- Tangle-Free

NEW COLORS 42" 52"



PRE-STRETCHED BRAID 42" 3X & 52" 3X

PRE-STRETCHED BRAID 42" 3X:

1, 130S, 1B, 2, 27, 30, 33, 34, 350, 4, 425, 44, 51, 60, 280, 613, 613A, 99J, 2T1B/130S, 2T1B/27, 2T1B/2730, 2T1B/27613, 2T1B/30, 2T1B/33, 2T1B/350, 2T1B/60, 2T1B/BLUE, 2T1B/BURGUNDY, 2T1B/FORSYTHIA, 2T1B/INDIGO, 2T1B/LUXE BLUE, 2T1B/MINT VIBES, 2T1B/OLIVE, 2T1B/SHOCKING PINK, AMBER, APPLE RED, APRICOT, AQUA MARINE, BLUE, BURGUNDY, DRAGON FRUIT, FORSYTHIA, INDIGO, LUXE BLUE, MINT, MINT VIBES, OLIVE, PURPLE, SHOCKING PINK, VIOLET, WARM VIOLET, WILD CHERRY, M1B/30, M1B/350, M1B/425, M4/30, M4/27/30, M4/27/613, M4/27/30/613, M27/613, M27/30/613, M27/30, M950/425/350/130S

PRE-STRETCHED BRAID 52" 3X:

1, 1B, 2, 4, 27, 30, 33, 34, 44, 51, 60, 99J, 130S, 280, 350, 425, 613, 613A, AMBER, APPLE RED, APRICOT, AQUA MARINE, BLUE, BLUE RASPBERRY, BRIGHT RED, BURGUNDY, DRAGON FRUIT, FORSYTHIA, GLOW NEON HOTPINK, GLOW NEON LEMON YELLOW, GLOW NEON ORANGE, GLOW NEON PUMPKIN, GREEN SHAKE, HOT PINK, INDIGO, LUXE BLUE, MINT, MINT VIBES, MOODY SKY BLUE, OLIVE, PARTY PUNCH, PUMPKIN SPICE, PURPLE, PURPLE RAIN, RASTA, ROSE GOLD, SHOCKING PINK, SKY BREEZY, SILVER GRAY, SMOKEY LILAC, SUN FLOWER, SWEDISH BLONDE, UNICORN, VIOLET, WARM VIOLET, WILD CHERRY, 2T1B/130S, 2T1B/27, 2T1B/2730, 2T1B/27613, 2T1B/30, 2T1B/33, 2T1B/350, 2T1B/60, 2T1B/BLUE, 2T1B/BURGUNDY, 2T1B/FORSYTHIA, 2T1B/INDIGO, 2T1B/LUXE BLUE, 2T1B/MINT VIBES, 2T1B/OLIVE, 2T1B/PURPLE, 2T1B/ROSE GOLD, 2T1B/SHOCKING PINK, 2T1B/SILVER GRAY, M1B/30, M1B/350, M1B/425, M4/30, M4/27/30, M4/27/613, M4/27/30/613, M27/613, M27/30/613, M27/30, M950/425/350/130S



COLOR SHOWN - CT/COPPER ORANGE

X-Pression Twisted Up®

Box Braid Loose Wave is the new easy style with plenty of waves for beach babes.

- Made with 100% Premium Synthetic Fiber
- Quick, Long Lasting Protective Style
- Soft texture
- Lightweight
- 100% Handcrafted
- Nonflammable



BOX BRAID LOOSE WAVE 24" 3X



AVAILABLE COLORS
1, 1B, 2, 4, CT/27, CT/30, CT/425, CT/COPPER ORANGE, CT/DAGON FRUIT, CT/MACCHIATO

SPECIAL COLORS



LIGHTWEIGHT



COLOR SHOWN - CT/27

X-Pression Twisted Up®

Our new curly, boho twists are infused with the beauty and carefree energy of the Islands.



- Made with 100% Premium Synthetic Fiber
- Quick, Long Lasting Protective Style
- Soft texture
- Lightweight



BOHO ISLAND TWIST 22" 3X



AVAILABLE COLORS
1, 1B, 2, 4, CT/27, CT/30, CT/425, CT/COPPER ORANGE, CT/DAGON FRUIT, CT/MACCHIATO

SPECIAL COLORS



LIGHTWEIGHT



X-Pression
Twisted Up®

Ready, set, boho, and go! We've added a 30" length option for our DIY-friendly, Wet and Wavy Vibe Beach Braids.



- Made with 100% Premium Synthetic Fiber
- Quick, Long Lasting Protective Style
- Soft texture
- Lightweight

COLOR SHOWN : CT/MACCHIATO

BOHO WET & WAVY VIBE BEACH BRAID 30" 3X



AVAILABLE COLORS
1, 1B, 2, 4, CT/27, CT/30, CT/425, CT/COPPER ORANGE, CT/Dragon Fruit, CT/MACCHIATO

SPECIAL COLORS



LIGHTWEIGHT



X-Pression
Twisted Up®

Bring the beach with you wherever you go with these new vacation-ready Boho Braids.



- Made with 100% Premium Synthetic Fiber
- Quick, Long Lasting Protective Style
- Soft texture
- Lightweight

COLOR SHOWN : CT/27

BOHO WET & WAVY VIBE OCEAN BRAID 24" 3X



AVAILABLE COLORS
1, 1B, 2, 4, CT/27, CT/30, CT/425, CT/COPPER ORANGE, CT/Dragon Fruit, CT/MACCHIATO

SPECIAL COLORS



LIGHTWEIGHT





COLOR SHOWN - T1B/30

NATURAL DEEP BULK
10", 12", 14", 18", 22", 24"

AVAILABLE LENGTHS
10", 12", 14", 18", 22", 24"
AVAILABLE COLORS
NATURAL BLACK, NATURAL, 27, 30, 425, T1B/27, T1B/30, T1B/425



LOOSE DEEP BULK 18"

AVAILABLE COLORS
NATURAL BLACK, NATURAL, 27, 30, 425, T1B/27, T1B/30, T1B/425



NATURAL 4C KINKY BULK 12"

AVAILABLE COLORS
NATURAL, NATURAL BLACK, 27, 30, 425, DEEP BLUE, DEEP PURPLE, HOT PINK



W&W SPLASH CORK BULK 14", 18", 24"

AVAILABLE LENGTHS
14", 18", 24"
AVAILABLE COLORS
NATURAL, NATURAL BLACK



NATURAL STRAIGHT BULK 14", 18", 24"

AVAILABLE LENGTHS
14", 18", 24"
AVAILABLE COLORS
NATURAL, NATURAL BLACK



NATURAL BODY BULK 18", 24"

AVAILABLE LENGTHS
18", 24"
AVAILABLE COLORS
NATURAL, NATURAL BLACK



GYPSY WAVE BULK 18", 24"

AVAILABLE LENGTHS
18", 24"
AVAILABLE COLORS
NATURAL, NATURAL BLACK



W&W SPLASH DEEP BULK 18", 24"

AVAILABLE LENGTHS
18", 24"
AVAILABLE COLORS
NATURAL, NATURAL BLACK

My TRESSES
100% UNPROCESSED HUMAN HAIR
GOLD LABEL

BULK
PRE-STRETCHED
100% UNPROCESSED HUMAN HAIR BULK

Unprocessed. Top Quality. Pre-Stretched. And the perfect pick for your next boho look.



- 100% Unprocessed Human Hair
- Pre-Stretched & Gentle on Fingers
- 9+ Quality Grade Bundle Hair
- Soft on Skin & Lightweight
- Comfortable, Itch-Free Wear
- Dye & Customize

AVAILABLE COLORS





STRAIGHT
NATURAL

BODY
NATURAL BLACK

OCEAN
NATURAL

BOHEMIAN
NATURAL

DEEP
NATURAL BLACK

Sugar Punch™

100% UNPROCESSED REMY HUMAN HAIR

Remy

DOUBLE DRAWN
FOR FULL, THICK ENDS
Smooth, Resilient STRANDS

Feel the Sugar Rush of Re-Wearable Closures.

- 100% Unprocessed Remy Human Hair
- 4"x4" / 13"x4" HD Transparent Lace Frontal
- Thick, Lush, Tangle-Free Ends
- Smooth, Resilient Hair & Long-Lasting Bundles
- One Directional Strands for More Tangle Resistance
- Pre-Plucked Hairline & Natural-Looking Baby Hair
- Double Drawn Process with Cuticle Retained Strands
- Bleach / Dye / Customize • No Shedding

4"X4" LACE CLOSURE



AVAILABLE COLORS: NATURAL BLACK, NATURAL
AVAILABLE LENGTHS: 10", 12", 14"

13"X4" LACE FRONTAL



AVAILABLE COLORS: NATURAL BLACK, NATURAL
AVAILABLE LENGTHS: 10", 12", 14"



COLOR SHOWN : 99J

premium
DUBY[®]
WIG

100% HUMAN HAIR

HH-Aysel's light layers highlight the wearer's cheekbones and make their eyes sparkle with its side-swept bangs.

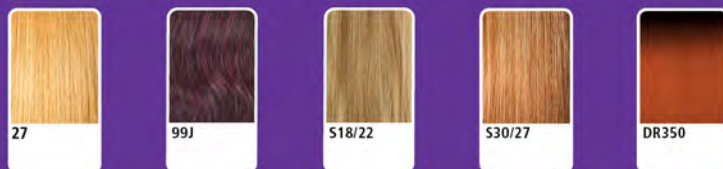
- 100% Premium Human Hair
- A Variety of Classic Styles and Color Options
- Affordable
- Durable and Long Lasting

HH-AYSEL



COLOR SHOWN : DR350, 99J, 99J (LEFT TO RIGHT)

AVAILABLE COLORS
1, 1B, 2, 4,
27, 99J,
S18/22,
S30/27,
DR350



COLOR SHOWN : DR1B/2T425

Outre[®]

100% FULLY HAND-TIED
WHOLE LACE WIG

Why book a salon appointment when you can wear a 100% Fully Hand-Tied Whole Lace Wig with Boho Box Braids?

- 100% Fully Hand-Tied Whole Lace Wig
- Individually Knotted Strands
- Track-Free / Breathable / Lightweight
- Breathable, Lightweight Cap
- Stretchy, One-Size Fits All Cap
- Freestyle Parting & Styling Versatility
- Soft, Flexible Braids & Baby Hair Included
- Fast, Easy & Effortless Glueless Installs

BOHO BOX BRAIDS 28"



COLOR SHOWN : 1B, DR1B/2T425, DR1B/2T425 (LEFT TO RIGHT)

AVAILABLE COLORS
1, 1B, 2,
CT/Dragon Fruit,
CT/Macchiato,
DR1B/2T425,
DR4/Chocolate Caramel,
DR4/Vanilla Latte



100% FULLY HAND-TIED
WHOLE LACE WIG





COLOR SHOWN : BURGUNDY



COLOR SHOWN : COCOA CARAMEL



COLOR SHOWN : GINGER

Outre®

5"x5" LACE CLOSURE WIG

100% HUMAN HAIR BLEND

Do you fantasize about an easy-to-wear wig with just enough lace and soft curls? Then get the new Outre 5"x5" Lace Closure Wig in the style Dream Curls.

Say yes to Outre's Natural Yaki 5"x5" lace closure unit featuring the perfect amount of lace and a touch of texture.

- 100% Human Hair Blend
- 5"x5" Lace Area
- Part Your Way - Left, Right, or Center
- Hand-Tied HD Lace
- Natural Pre-Plucked Hairline with Baby Hair
- Pre-Attached Elastic Band for a Flat Fit
- Fast, Easy & Effortless Glueless Installs

HHB-DREAM CURLS 20"



COLOR SHOWN : DR4/MUSHROOM BLONDE, COCOA CARAMEL, COCOA CARAMEL (LEFT TO RIGHT)

AVAILABLE COLORS
1, 1B, 2, BURGUNDY, COCOA CARAMEL, FROSTED ASH BLONDE, GOLDEN AMBER, SPICED COGNAC, DR4/MUSHROOM BLONDE, DRFF4/NEAPOLITAN SWIRL



HHB-NATURAL YAKI 22"



COLOR SHOWN : STRAWBERRY GOLD, COCOA CARAMEL, GINGER, GINGER (LEFT TO RIGHT)

AVAILABLE COLORS
1, 1B, 2, COCOA CARAMEL, FROSTED ASH BLONDE, GINGER, STRAWBERRY GOLD, DR2/HONEY BROWN, DRFF2/RUBY ROSE





COLOR SHOWN : 1B



COLOR SHOWN : STRAWBERRY GOLD



COLOR SHOWN : MC DIPPED CHERRY

Lace Front
PERFECT HAIRLINE™

FULLY HAND-TIED 13"x6" LACE WIG

Try a different look every day with Lenaj! Featuring a versatile 13"x6" frontal and waves for days!

Make a style statement with Mailah! This layered look frames the face and comes in colors like Cherry Dipped and Strawberry Gold.

Get ready to rev up your style with Reeve! Available in several special colors, this shoulder-length unit includes large curls that start mid-length.

- Fully Hand-Tied 13" x 6" Frontals
- Ear-to-Ear Soft HD Transparent Lace
- Natural Baby Hairs
- Comes With a Pre-Attached Elastic Band
- Fast, Easy & Effortless Glueless Installs
- Pre-Plucked Hairline
- Heat-Styling Friendly

LENAJ 26"



COLOR SHOWN : DR2/GINGER BROWN, TIRAMISU, 1B, 1B (LEFT TO RIGHT)

AVAILABLE COLORS
1, 1B, 2, TIRAMISU, DR2/GINGER BROWN, DRFF MIDNIGHT SUNSET, DRFF2/CHERRY RED, DRFF2/VANILLA MOCHACCINO, DRST HAZELNUT MOCHA, DRST SILVER NOIR, DRST4/WILD HONEY SWIRL



MAILAH 24"



COLOR SHOWN : DRMC2/GINGER TOFFEE, ASH BROWN, STRAWBERRY GOLD, STRAWBERRY GOLD (LEFT TO RIGHT)

AVAILABLE COLORS
1, 1B, 2, ASH BROWN, STRAWBERRY GOLD, TIRAMISU, DRFF2/DARK HONEY MELT, DRFF2/HONEY AMBER BROWN, DRMC2/GINGER TOFFEE, DRMC4/SMORES DIP, MC DIPPED CHERRY



REEVA 16"



COLOR SHOWN : TIRAMISU, DRFF MIDNIGHT SUNSET, MC DIPPED CHERRY, MC DIPPED CHERRY (LEFT TO RIGHT)

AVAILABLE COLORS
1, 1B, 2, TIRAMISU, DR BROWN SUGAR SWIRL, DRFF MIDNIGHT SUNSET, DRMC2/GINGER TOFFEE, DRMC4/SMORES DIP, DRST SILVER NOIR, DRST4/VANILLA COCOA MELT, MC DIPPED CHERRY



13 X 6



melted HAIRLINE



LACE FRONT WIG



COLOR SHOWN : BLUE STEEL

Swooped bangs, special colors, and a realistic density make Hali a standout style.

- Soft HD Transparent Lace
- 5" Deep Parting
- Completely Pre-Plucked Hairline & Sideburns
- Pre-Attached Wide Elastic Band for Secure Fit
- Fast, Easy & Effortless Glueless Installs
- Natural Baby Hairs
- Redesigned ComfortFit Ear Contour
- Heat Resistant Fiber

HALI 18"



AVAILABLE COLORS

- 1, 1B, 2,
- BLUE STEEL,
- BURGUNDY,
- GINGER COPPER KISS,
- GOLDEN AMBER,
- SANDY BLONDE,
- SPICED COGNAC,
- DR2/CHOCOLATE SWIRL



COLOR SHOWN : BURGUNDY, 1B, BLUE STEEL, BLUE STEEL (LEFT TO RIGHT)



SWIRL 110 12"



DEEPER, WIDER HAND-TIED LACE HAIRLINE

5" DEEP C-SHAPE PARTING



COLOR SHOWN : 1B, DR CHAI LATTE, DRST VAMPIRE RED, DRST VAMPIRE RED (LEFT TO RIGHT)

- AVAILABLE COLORS
- 1, 1B, 2, COCOA CARAMEL, FROSTED ASH BLONDE, DR CHAI LATTE, DR GINGER TOFFEE, DR2/VANILLA COCOA, DRF ESPRESSO BROWN, DRST VAMPIRE RED



melted HAIRLINE SWIRLISTA™

LACE FRONT WIG



COLOR SHOWN : DRST VAMPIRE RED

Swirl 110 has an explosion of spirals and more lace space for swirly baby hairs.

PERFECTED HAND-TIED LACE PART, HAIRLINE & SIDEBURNS

- More Space to Finesse your Baby Hairs
- Pre-Plucked with Precision
- Super Natural Shape and Density
- 5" Deep C-Shape Parting

BEAUTIFUL BLENDING & EASY INSTALLS

- Pre-Attached Wide Elastic Band for Glueless Installs
- Redesigned ComfortFit Ear Contour
- Soft HD Transparent Lace



COLOR SHOWN : DRFF2/DARK HONEY MELT



COLOR SHOWN : SOFT BLONDE



COLOR SHOWN : RED DESIRE



Lace front[®]
LACE FRONT WIG

Carmel is a new Y2K-inspired style that's on-trend and teen-approved!

All eyes will be on you when you wear Haseena, a sophisticated style in surprising new colors.

Hot style alert! Lexa has 24" loose waves in fiery colors like Red Desire.

- HD Transparent Lace
- Breathable, Comfortable Cap
- Natural Baby Hairs
- Pre-Plucked Parting
- Fast, Easy & Effortless Glueless Installs
- Heat Resistant Fiber

CARMEL 12"



COLOR SHOWN : GINGER COPPER, DRFF2/DARK HONEY MELT, DRFF2/DARK HONEY MELT (LEFT TO RIGHT)

AVAILABLE COLORS
1, 1B, 2, COSMO RED, GINGER COPPER, GOLDEN AMBER, TIRAMISU, DR BROWN SUGAR SWIRL, DR PINK BLUSH, DRFF2/DARK HONEY MELT



HASEENA 22"



COLOR SHOWN : DR4/FROSTED ALMOND, SOFT BLONDE, SOFT BLONDE (LEFT TO RIGHT)

AVAILABLE COLORS
1, 1B, 2, RED VELVET, ROUGE PINK, SOFT BLONDE, DR4/FROSTED ALMOND, DRST CHOCOLATE HONEY, DRST4/HONEY WALNUT, FF APRICOT GINGER, LR8/HONEY ASH BLONDE



LEXA 24"



COLOR SHOWN : DR2/CHESTNUT BROWN, RED DESIRE, RED DESIRE (LEFT TO RIGHT)

AVAILABLE COLORS
1, 1B, 2, HONEY BUTTER, RED DESIRE, DR2/CHESTNUT BROWN, DRFF BLACK JADE, DRFF BLACK PINK, DRST4/HONEY WALNUT, FF APRICOT GINGER



NATURAL BABY HAIRS





COLOR SHOWN : DRFF4/NEAPOLITAN SWIRL



COLOR SHOWN : GINGER AUBURN



COLOR SHOWN : GOLDEN AMBER

EveryWear™

LACE FRONT WIG

Every38's simple style is made for every type of girl! It's available in a range of colors, from tame to bold!

Every39 has a wet & wavy style without the mess of gels and sprays! Wear this youthful style at the club, the beach or anywhere else.

No one can tell that this short, curly cut isn't your own hair! Fool everyone in the new Every40 unit.

- Ear-to-Ear HD Lace
- Easy, Goes-with-Everything Style
- Heat Resistant Fiber

EVERY38 24"



EVERY39 28"



EVERY40



COLOR SHOWN : DR RED VELVET, DRFF4/NEAPOLITAN SWIRL, DRFF4/NEAPOLITAN SWIRL (LEFT TO RIGHT)



COLOR SHOWN : DR4/SANDY BLONDE MELT, GINGER AUBURN, GINGER AUBURN (LEFT TO RIGHT)



COLOR SHOWN : DRF ESPRESSO BROWN, GOLDEN AMBER, GOLDEN AMBER (LEFT TO RIGHT)

AVAILABLE COLORS
1, 1B, 2, COCOA CARAMEL, GOLDEN AMBER, GOLDEN HONEY BLONDE, SPICED COGNAC, DR LAVENDER SWIRL, DR RED VELVET, DR4/SANDY BLONDE MELT, DRFF4/NEAPOLITAN SWIRL



AVAILABLE COLORS
1, 1B, 2, CHOCOLATE CARAMEL, FROSTED ASH BLONDE, GINGER AUBURN, STRAWBERRY GOLD, DR RED VELVET, DR2/CHOCOLATE SWIRL, DR4/SANDY BLONDE MELT



AVAILABLE COLORS
1, 1B, 2, GOLDEN AMBER, GOLDEN HONEY BLONDE, SPICED COGNAC, DR RED VELVET, DR2/VANILLA COCOA, DRF ESPRESSO BROWN





COLOR SHOWN : TIRAMISU (LEFT), DRB GINGER (RIGHT)



COLOR SHOWN : CREAM SODA

wigpop[®]

SYNTHETIC FULL WIG

Look stylin' in Ivan! This pixie is ready to pair with your spring and summer wardrobe.

Feel playful and look stylish in Page! This cropped cut features a flirty side bang and special shades like Cream Soda.

- Great Value
- Ready to Wear & Go
- Range of Trendy Colors & Styles
- Heat-Styling Friendly



AVAILABLE COLORS

- 1, 1B, 2,
- CHOCOLATE SWIRL,
- RED VELVET,
- TIRAMISU,
- DRB AQUA BLUE,
- DRB BUTTERED TOAST,
- DRB GINGER,
- DRB HOT PINK

IVAN



COLOR SHOWN : DRB GINGER, DRB GINGER (LEFT TO RIGHT)



PAGE



AVAILABLE COLORS

- 1 1B, 2,
- BLUE ANGEL,
- CHOCOLATE SWIRL,
- COPPER BLONDE,
- CREAM SODA,
- FIRE COPPER,
- GINGER BROWN,
- PEARLY PINK,
- RED VELVET



COLOR SHOWN : PEARLY PINK, CREAM SODA, CREAM SODA (LEFT TO RIGHT)





COLOR SHOWN : DR GINGER BROWN (LEFT & RIGHT)



COLOR SHOWN : 1B

converti-cap®

PREMIUM SYNTHETIC FIBERS

Curls Allure and Curly Bliss are the key to spring and summer styles. They're made to blend with your own ringlets and transform into a variety of looks.

- Limitless styling possibilities
- Reveal your own hairline for a realistic look
- Breathable and flexible cap that lays flat
- Adjustable drawstring for a custom fit
- Premium Synthetic Fibers
- Bacteria-Resistant Cap



AVAILABLE COLORS
1, 1B, 2,
S1B/30,
DR GINGER BROWN,
DR HONEY BROWN,
DR MULLED WINE,
DR2/CHOCOLATE SWIRL,
DR2/GOLDEN HONEY

CURLS ALLURE 18"



COLOR SHOWN : DR GINGER BROWN, 1B, 1B, DR GINGER BROWN, DR GINGER BROWN (LEFT TO RIGHT)

CURLY BLISS 24"



AVAILABLE COLORS
1, 1B, 2,
S1B/30,
DR GINGER BROWN,
DR HONEY BROWN,
DR MULLED WINE,
DR2/CHOCOLATE SWIRL,
DR2/GOLDEN HONEY



COLOR SHOWN : 1B, 1B, DR2/CHOCOLATE SWIRL, DR2/CHOCOLATE SWIRL, 1B, 1B (LEFT TO RIGHT)





COLOR SHOWN : DR GINGER TOFFEE



COLOR SHOWN : DR GINGER BROWN



COLOR SHOWN : 1B

Quick WEAVE.

Rock Cypress's easy-to-blend, bouncy curls! This 14" look will add volume and beauty to your next style.

Add length and body in a hurry with Hazel. This simple, beautiful style can be done in 60 seconds.

Coils are the star of the new Kiora unit. Choose how you wear it - try a bang, a low bun, and much more!

- Natural Texture & Volume
- New Cap Lays Flatter
- High Heat Resistant Fiber
- Easy-to-Wear Styles
- Less Leave Out Required

CYPRESS 14"



COLOR SHOWN : 1B, DR GINGER TOFFEE, DR GINGER TOFFEE (LEFT TO RIGHT)

AVAILABLE COLORS
1, 1B, 2, DR GINGER TOFFEE, DR RED VELVET, DR2/GOLDEN AMBER, DR2/HAZELNUT BROWN, DR4/MUSHROOM BLONDE, DRF ESPRESSO BROWN



HAZEL 20"



COLOR SHOWN : 1B, DR GINGER BROWN, DR GINGER BROWN (LEFT TO RIGHT)

AVAILABLE COLORS
1, 1B, 2, DR CHAI LATTE, DR GINGER BROWN, DR RED VELVET, DR2/CHOCOLATE SWIRL, DR4/BLONDE LATTE MELT, DR4/MUSHROOM BLONDE



KIORA 14"



COLOR SHOWN : DR2/CREAMY TOFFEE, 1B, 1B (LEFT TO RIGHT)

AVAILABLE COLORS
1, 1B, 2, 34, 51B/30, DR CHOCOLATE SWIRL, DR2/CINNAMON WINE, DR2/CREAMY TOFFEE, DR2/GINGER BROWN, DR4/TIRAMISU





COLOR SHOWN : DR CHOCOLATE SWIRL



COLOR SHOWN : DR CHOCOLATE CREAM



COLOR SHOWN : DR2/CREAMY TOFFEE

Quick WEAVE.

Get more styles with Misha! These tousled 18" curls are made to be altered in any style you please. Oleana and Shanay are the glamour queens of Quick Weave! These styles have graceful waves and a versatile construction.

- Natural Texture & Volume
- New Cap Lays Flatter
- High Heat Resistant Fiber
- Easy-to-Wear Styles
- Less Leave Out Required

MISHA 18"



COLOR SHOWN : 1B, DR CHOCOLATE SWIRL, DR CHOCOLATE SWIRL (LEFT TO RIGHT)

AVAILABLE COLORS
1, 1B, 2, 34, S1B/30, DR CHOCOLATE SWIRL, DR2/CINNAMON WINE, DR2/CREAMY TOFFEE, DR2/GINGER BROWN, DR4/TIRAMISU

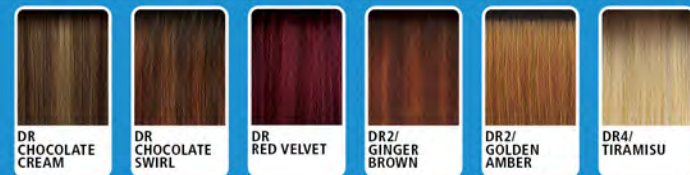


OLEANA 24"



COLOR SHOWN : DR4/TIRAMISU, DR CHOCOLATE CREAM, DR CHOCOLATE CREAM (LEFT TO RIGHT)

AVAILABLE COLORS
1, 1B, 2, DR CHOCOLATE CREAM, DR CHOCOLATE SWIRL, DR RED VELVET, DR2/GINGER BROWN, DR2/GOLDEN AMBER, DR4/TIRAMISU



SHANAY 24"



COLOR SHOWN : DR2/GINGER BROWN, DR2/CREAMY TOFFEE, DR2/CREAMY TOFFEE (LEFT TO RIGHT)

AVAILABLE COLORS
1, 1B, 2, S1B/30, DR CHOCOLATE SWIRL, DR RED VELVET, DR2/CREAMY TOFFEE, DR2/GINGER BROWN, DR2/GOLDEN AMBER, DR4/TIRAMISU





COLOR SHOWN : CHOCOLATE SWIRL

COLOR SHOWN : 1B



COLOR SHOWN : DRST HONEY BROWN

Pretty Quick™

PREMIUM SYNTHETIC FIBER

PONY

Impress everyone with Jess! This ponytail's spirally strands are ready to swish and sway.

The Lyla ponytail is an elegant style that will elevate any look.

- Natural Look & Soft Texture
- Quick & Easy Styling
- Lightweight Drawstring Construction
- Premium Synthetic Fiber



AVAILABLE COLORS

- 1, 1B, 2,
 CHOCOLATE SWIRL,
 DR2/CINNAMON WINE,
 DR2/GINGER BROWN,
 DR2/GOLDEN AMBER,
 DR2/TIRAMISU

JESS 26"



COLOR SHOWN : 1B, 1B (LEFT TO RIGHT)



CHOCOLATE SWIRL



DR2/CINNAMON WINE



DR2/GINGER BROWN



DR2/GOLDEN AMBER



DR2/TIRAMISU



COLOR SHOWN : 1, DRST HONEY BROWN, DRST HONEY BROWN (LEFT TO RIGHT)



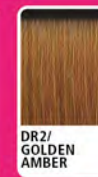
CHOCOLATE SWIRL



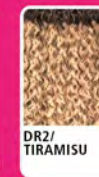
DR2/CINNAMON WINE



DR2/GINGER BROWN



DR2/GOLDEN AMBER



DR2/TIRAMISU



DRST HONEY BROWN

AVAILABLE COLORS

- 1, 1B, 2,
 CHOCOLATE SWIRL,
 DR2/CINNAMON WINE,
 DR2/GINGER BROWN,
 DR2/GOLDEN AMBER,
 DR2/TIRAMISU,
 DRST HONEY BROWN

LYLA 30"





COLOR SHOWN : DR2/GINGER BROWN



COLOR SHOWN : 1B



COLOR SHOWN : 1B

Pretty Quick™

PREMIUM SYNTHETIC FIBER

PONY

Dive into the rippling waves of the new May ponytail.

Corrie's curls are popping! This drawstring pony is the perfect staple style for spring and summer.

- Natural Look & Soft Texture
- Quick & Easy Styling
- Lightweight Drawstring Construction
- Premium Synthetic Fiber



AVAILABLE COLORS

1, 1B, 2,

- DR CHOCOLATE SWIRL,
- DR2/CINNAMON WINE,
- DR2/GINGER BROWN,
- DR2/GOLDEN AMBER,
- DR2/TIRAMISU

MAY 26"



COLOR SHOWN : 1B, 1B (LEFT TO RIGHT)



DR CHOCOLATE SWIRL



DR2/CINNAMON WINE



DR2/GINGER BROWN



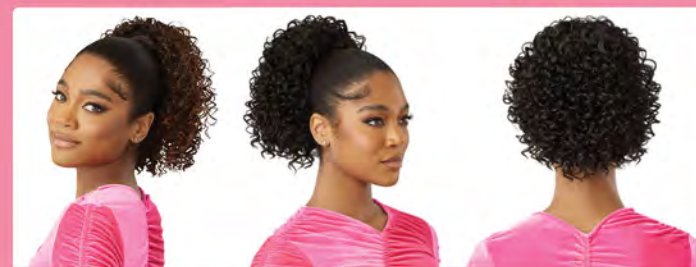
DR2/GOLDEN AMBER



DR2/TIRAMISU



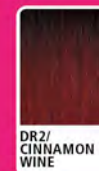
CORRIE 12"



COLOR SHOWN : DR CHOCOLATE SWIRL, 1B, 1B (LEFT TO RIGHT)



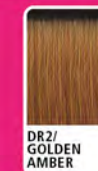
DR CHOCOLATE SWIRL



DR2/CINNAMON WINE



DR2/GINGER BROWN



DR2/GOLDEN AMBER



DR2/TIRAMISU

AVAILABLE COLORS

1, 1B, 2,

- DR CHOCOLATE SWIRL,
- DR2/CINNAMON WINE,
- DR2/GINGER BROWN,
- DR2/GOLDEN AMBER,
- DR2/TIRAMISU



Pretty Quick™

PREMIUM SYNTHETIC FIBER

WRAP PONY

Pretty Quick's classic Kinky Straight style is back! This is a salon-inspired style that's easy to blend, and simple to put-on.

- Made with Premium Synthetic Fiber
- Great for High & Low Ponytails
- Salon Style Wrap Ponytail
- Bulk-Free Ponytail Base
- Quick and Easy Styling
- Lightweight
- Soft Feel & Natural Luster



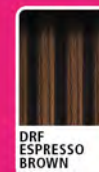
COLOR SHOWN : 1B

KINKY STRAIGHT 28"



AVAILABLE COLORS

1, 1B, 2, DR GINGER BROWN, DR HONEY AUBURN, DR RED VELVET, DR2/CHOCOLATE SWIRL, DRF ESPRESSO BROWN



Pretty Quick™

PREMIUM SYNTHETIC FIBER

WRAP PONY

Wear this Loose Body ponytail style to a party, to class, or to your 9-5.

- Made with Premium Synthetic Fiber
- Great for High & Low Ponytails
- Salon Style Wrap Ponytail
- Bulk-Free Ponytail Base
- Quick and Easy Styling
- Lightweight
- Soft Feel & Natural Luster



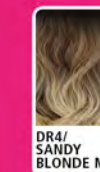
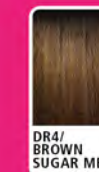
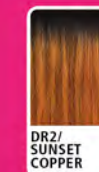
COLOR SHOWN : 1B

LOOSE BODY 28"



AVAILABLE COLORS

1, 1B, 2, DR PAPRIKA SPICE, DR2/SUNSET COPPER, DR4/BROWN SUGAR MELT, DR4/SANDY BLONDE MELT





BONE STRAIGHT



DOUBLE DRAWN



VELVET Lush™

REMY

100% REMY HUMAN HAIR

VELVET LUSH

LUXURY MEETS RELIABILITY



MULTIPLE WASHES & WEARS

WORRY-FREE WASHING



AFTER WASHING



- MULTIPLE WEARS
- MULTIPLE WASHES
- MADE TO LAST

- NOT WASH & RE-WEAR FRIENDLY
- FRIZZY, DRY & HARD TO DETANGLE

STYLE & COLOR SHOWN :
VELVET LUSH | 1

AVAILABLE COLORS : 1, 1B, 2 AVAILABLE LENGTHS : 10", 12", 14", 16", 18", 20", 22", 24"