

MAY 2023

# Outre®



**STYLE & COLOR SHOWN:**  
HH-VERONICA | OM34/44/51 (LEFT)  
HH-MARINETTE | OM280/34/44 (RIGHT)

**MAKE MOM'S DAY  
FABULOUS.**

FAB & FLY\_GRAY GLAMOUR



# IN THIS ISSUE

Whether she's a grandma, glam mom or simply a mature woman - she's looking for classy styles in a wide range of gray and natural colors. Made with 100% Human Hair, Fab & Fly is perfect for her.

<b>BRAID</b> <b>03</b> PRE-STRETCHED BRAID 52" 3X <i>X-Pression</i> NEW COLORS	<b>HH-BLEND WEAVE</b> <b>04</b> PRE-STRETCHED DOMINICAN CURL BULK 18" / 24" LOOSE DEEP BULK 18" / 24" NATURAL FRENCH BULK 18" / 24" STRAIGHT BULK 18" / 24" <i>Brazilian BUNDLE</i> PRE-STRETCHED HUMAN HAIR BLEND BULK	<b>HH-BLEND WEAVE</b> <b>05</b> DOMINICAN CURL 18" / 24" LOOSE DEEP 18" / 24" NATURAL FRENCH 18" / 24" <i>Brazilian BUNDLE</i> 100% HUMAN HAIR PREMIUM BLEND	<b>HH-BLEND WEAVE</b> <b>06</b> VIRGIN LOOSE DEEP 18"20"22" SLEEK PRESSED 18"20"22" VIRGIN BODY 18" 20" 22"
<b>HH-BLEND CLIP-INS</b> <b>08</b> SPRINGY AFRO 10" BOHEMIAN CURL 14" <i>Big Beautiful Hair</i> CLIP-IN	<b>HH-FULL WIG</b> <b>09</b> ALL FAB & FLY ITEMS <i>Fab &amp; Fly</i>	<b>LACE WIG</b> <b>14</b> PASCALE <i>melted HAIRLINE</i> LACE FRONT WIG	<b>LACE WIG</b> <b>15</b> DILAN <i>Outre</i> LACE FRONT DELUXE PREMIUM SYNTHETIC FIBRE
<b>LACE WIG</b> <b>16</b> KAYCEE <i>COLOR BOMB</i> PREMIUM SYNTHETIC FIBRES	<b>LACE WIG</b> <b>17</b> DINELLA <i>Lace front</i> LACE FRONT WIG	<b>FULL WIG</b> <b>18</b> TRIXIE <i>wigpop</i> SYNTHETIC FULL WIG <i>colorplay</i>	<b>FULL WIG</b> <b>19</b> AMOYA <i>wigpop</i> SYNTHETIC FULL WIG <i>Style SELECTS</i>
<b>OUTRE'S FAVORITES</b> <b>20</b> MYTRESSES BLACK CUSTOM COLORED HH-CASSINA, HH-LETISHA <i>My TRESSES</i> Custom Colored Lace Front Wig	<b>OUTRE'S FAVORITES</b> <b>21</b> MYTRESSES PURPLE COLORMORE FULL WIG HH-BLONDE BOB 10"/12"/14" <i>My TRESSES</i> COLORMORE LACE WIG <i>THE DAILY WIG</i> 100% UNPROCESSED HUMAN HAIR LACE PART WIG	<b>OUTRE'S FAVORITES</b> <b>22</b> LAURENCE KALLARA MIABELLA <i>melted HAIRLINE</i> LACE FRONT WIG	<b>OUTRE'S FAVORITES</b> <b>23</b> 13X4 LISSIE 13X6 EVERETTE, BEXLEY, FREYA <i>PERFECT HAIRLINE</i>
<b>OUTRE'S FAVORITES</b> <b>24</b> PERLA ASMARA GEOVANNA LAVETTE NELLA <i>SleekLay</i> Part	<b>OUTRE'S FAVORITES</b> <b>25</b> OUTRE LACE FRONT DELUXE SILVANA COLLINA LACE FRONT COLORBOMB TAYTEN LEVANA <i>Outre</i> LACE FRONT DELUXE <i>COLOR BOMB</i>	<b>OUTRE'S FAVORITES</b> <b>26</b> AMADIO CAPRICE CHRISTA EDWINA SEPHINA <i>Lace front</i> LACE FRONT WIG	<b>OUTRE'S FAVORITES</b> <b>27</b> EVERY17 EVERY19 EVERY20 <i>EveryWear</i> LACE FRONT WIG
<b>OUTRE'S FAVORITES</b> <b>28</b> ADALIA BECCA ADANA JAMELIA <i>THE DAILY WIG</i> LACE PART WIG	<b>OUTRE'S FAVORITES</b> <b>29</b> MIKI RIMA AGATHA HONEY BRETT MERIDA <i>wigpop</i> SYNTHETIC FULL WIG	<b>OUTRE'S FAVORITES</b> <b>30</b> TWIST & TURN CHARMING WAVES SASSY BELLE LUSCIOUS ANGEL <i>converti-cap</i>	<b>OUTRE'S FAVORITES</b> <b>31</b> QUICK WEAVE NEESHA H303, NEESHA H305 BIG BEAUTIFUL HAIR LEAVE OUT WIG CURLY TWIST 14" PASSION COILS 20" <i>Quick WEAVE</i> <i>Big Beautiful Hair</i> LEAVE OUT WIG

# X-Pression®

## PRE-STRETCHED

Kick up spring and summer braids with pre-stretched hair in new colors.

## NEW COLORS



## PRE-STRETCHED BRAID 52" 3X

### AVAILABLE COLORS :

1, 1B, 2, 4, 27, 30, 33, 34, 44, 51, 60, 99J, 130S, 280, 350, 425, 613, 613A, BLUE, BLUE RASPBERRY, BRIGHT RED, BURGUNDY, DRAGON FRUIT, FORSYTHIA, GLOW NEON HOTPINK, GLOW NEON LEMON YELLOW, GLOW NEON ORANGE, GLOW NEON PUMPKIN, GREEN SHAKE, HOT PINK, INDIGO, LUXE BLUE, MINT VIBES, MOODY SKY BLUE, OLIVE, PARTY PUNCH, PUMPKIN SPICE, PURPLE, PURPLE RAIN, RASTA, ROSE GOLD, SHOCKING PINK, SKY BREEZY, SILVER GRAY, SMOKEY LILAC, SUN FLOWER, SWEDISH BLONDE, UNICORN, VIOLET, 2T1B/130S, 2T1B/27, 2T1B/2730, 2T1B/27613, 2T1B/30, 2T1B/33, 2T1B/350, 2T1B/60, 2T1B/BLUE, 2T1B/BURGUNDY, 2T1B/FORSYTHIA, 2T1B/INDIGO, 2T1B/LUXE BLUE, 2T1B/MINT VIBES, 2T1B/OLIVE, 2T1B/PURPLE, 2T1B/ROSE GOLD, 2T1B/SHOCKING PINK, 2T1B/SILVER GRAY, M27/30, M27/613, M27/30/613, M4/27/30, M4/27/613

- Pre-Stretched & Pre-Layered
- Quickest Install
- Easy to Braid
- Easy to Manage
- Ultra Lightweight
- Hot Water Set Friendly
- Tangle-Free





premium  
**purple pack**  
*Brazilian*  
**BUNDLE**  
100% HUMAN HAIR PREMIUM BLEND

**PRE-STRETCHED**  
HUMAN HAIR BLEND BULK

Purple Pack is back with bulk hair in new colors for natural goddess locs, knotless braids and more.

- 100% Human Hair Premium Blend
- Pre-Stretched & Tangle Free
- Lightweight, Soft on Skin, Itch-Free Wear
- Curling Iron Safe
- Perfect for Knotless Styles, Goddess Braids and More



DOMINICAN CURL BULK | NATURAL FRENCH BULK | LOOSE DEEP BULK | STRAIGHT BULK



NATURAL FRENCH | DOMINICAN CURL | LOOSE DEEP

premium  
**purple pack**  
*Brazilian*  
**BUNDLE**  
100% HUMAN HAIR PREMIUM BLEND

With our Single Bundle Collection, create spring styles, like ponytails, that pop with color.

- 100% Human Hair Premium Blend
- Bundle-Inspired Textures
- Easy to Maintain
- Tangle-Free & Shed-Free

DOMINICAN CURL BULK 18" & 24" | NATURAL FRENCH BULK 18" & 24" **NEW**

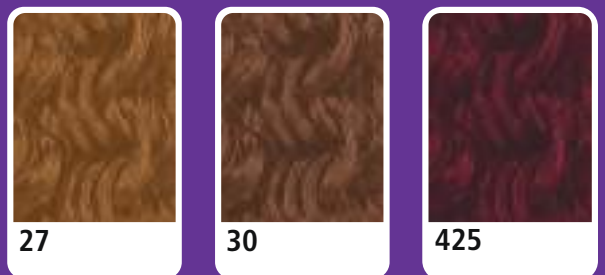
NATURAL FRENCH 18" & 24" **NEW**

LOOSE DEEP BULK 18" & 24" | STRAIGHT BULK 18" & 24" **NEW COLOR**

DOMINICAN CURL 18" & 24" | LOOSE DEEP 18" & 24" **NEW COLOR**

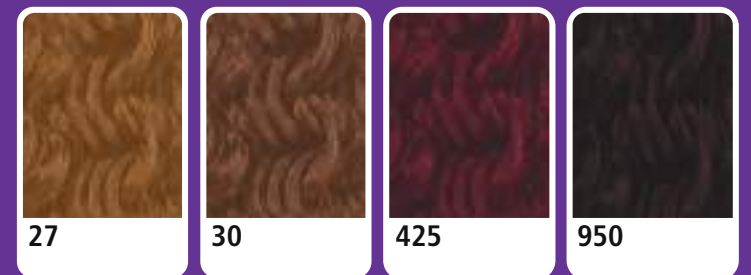
AVAILABLE COLORS :  
JET BLACK, NATURAL BLACK, NATURAL, 27, 30, 425, 950

**NEW COLORS**



AVAILABLE COLORS :  
JET BLACK, NATURAL BLACK, NATURAL, 27, 30, 425, 613, 950

**NEW COLORS**





premium  
**purple pack**  
**BRAZILIAN**  
BOUTIQUE

100% HUMAN HAIR PREMIUM BLEND

Nothing says summer like the beachy waves of the new Virgin Loose Deep style that comes with a naturally parted closure.

- 100% Human Hair Premium Blend
- Free 4" Deep Lace Parting Piece
- Pre-Plucked Closure with Natural Baby Hair
- 3 Full Bundles
- Curling Iron Safe
- Tangle-Free & Shed-Free



**New**

COLOR SHOWN : DR425

**VIRGIN LOOSE DEEP**  
18"/ 20"/ 22"



COLOR SHOWN : DR30

COLOR SHOWN : DR27

**VIRGIN VOLUME PRESSED**  
26"/28"/30"

**VIRGIN SLEEK PRESSED**  
26"/28"/30"



COLOR SHOWN : DR425

COLOR SHOWN : NATURAL BROWN

**VIRGIN BODY**  
26"/28"/30"

**VIRGIN DEEP**  
18"/20"/22"



**New**

COLOR SHOWN : DR7613

**VIRGIN SLEEK PRESSED**  
18"/20"/22"



**New**

COLOR SHOWN : DR30

**VIRGIN BODY**  
18"/20"/22"

**AVAILABLE STYLES & LENGTHS :**

VIRGIN LOOSE DEEP 18"/ 20"/ 22", VIRGIN VOLUME PRESSED 18"/ 20"/ 22", 26"/ 28"/ 30"  
VIRGIN SLEEK PRESSED 18"/ 20"/ 22", 26"/ 28"/ 30", VIRGIN BODY 18"/ 20"/ 22", 26"/ 28"/ 30", VIRGIN DEEP 18"/ 20"/ 22"

**AVAILABLE COLORS :**

VIRGIN LOOSE DEEP, VIRGIN DEEP : JET BLACK, NATURAL BLACK, NATURAL BROWN, 950, DR27, DR30, DR425, DR27613, DRRED  
VIRGIN VOLUME PRESSED, VIRGIN SLEEK PRESSED, VIRGIN BODY : JET BLACK, NATURAL BLACK, NATURAL BROWN, DR27, DR30, DR425, DR27613

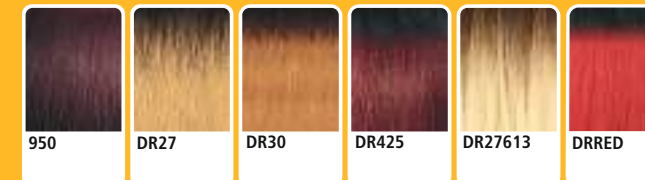
**AVAILABLE STYLES :**

VIRGIN BODY 18"/ 20"/ 22",  
VIRGIN SLEEK PRESSED 18"/ 20"/ 22"

**AVAILABLE COLORS :**

JET BLACK, NATURAL BLACK,  
DR27, DR30, DR425, DR27613, DRRED

**SPECIAL COLORS**



premium  
**purple pack**  
**BRAZILIAN**  
BOUTIQUE

100% HUMAN HAIR PREMIUM BLEND

Turn heads while staying on budget with the new Sleek Pressed and Virgin Body bundles and 4x4 closures.

- 100% Human Hair Premium Blend
- Free 4"x4" HD Hand-Tied Lace Closure
- Pre-Plucked Closure with Natural Baby Hair
- 3 Full Bundles
- Curling Iron Safe
- Tangle-Free & Shed-Free





*Big Beautiful Hair*

**CLIP-IN 9**  
100% HUMAN HAIR PREMIUM BLEND

Add length and volume with clip-ins that blend beautifully in new Springy Afro and Bohemian Curl styles.

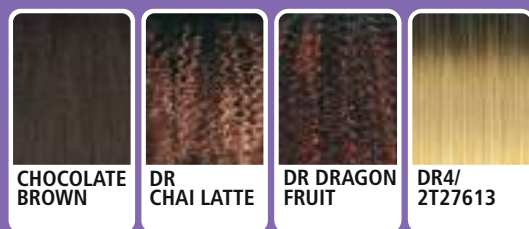
- 100% Human Hair Blend
- 9 Clip-In Pieces
- Blends Perfectly with Curly and Textured Hair
- Creates Longer, Fuller Looks
- Limitless Quick Styling Possibilities
- Available in a Variety of Colors



**SPRINGY AFRO 10" | BOHEMIAN CURL 14"**

AVAILABLE COLORS :  
JET BLACK, NATURAL BLACK, NATURAL BROWN,  
CHOCOLATE BROWN, DR CHAI LATTE,  
DR DRAGON FRUIT, DR4/2T27613

SPECIAL COLORS



*Fab & Fly*™

MAKE  
MOM'S DAY  
FABULOUS!

*Fab meets fly.*

You've never settled for anything less than fabulous, and won't start now! Fab & Fly™ is made with 100% Human Hair, so it's long-lasting. Curl it and straighten it anyway you like. Available in a wide range of gray colors and cuts, so you'll find the perfect finishing touch to step out in style.

- 100% Human Hair
- Breathable Mesh Cap
- Comfortable & Secure Fit
- Voluminous & Full
- Easy-to-Wear & Style
- Bleach & Dye Friendly

✓ Bleach ✓ Dye ✓ Customize



STYLE / COLOR SHOWN : HH-VERONICA / OM34/44/51



GRAY  
GLAMOUR



COLOR SHOWN : OM34/44/51 (LEFT), 34 (RIGHT)

HH-ADDISON

GRAY  
GLAMOUR



COLOR SHOWN : 34 (LEFT), OM280/34/44 (RIGHT)

HH-ASHA

GRAY  
GLAMOUR



COLOR SHOWN : OM33/44/51 (LEFT), HL34/51 (RIGHT)

HH-DINA

GRAY  
GLAMOUR



COLOR SHOWN : 34 (LEFT), OM280/34/44 (RIGHT)

HH-EDEN

GRAY  
GLAMOUR



COLOR SHOWN : FF34/51 (LEFT), 34 (RIGHT)

HH-HARRIET

GRAY  
GLAMOUR



COLOR SHOWN : OM280/34/44 (LEFT), HL34/51 (RIGHT)

HH-MARINETTE

GRAY  
GLAMOUR



COLOR SHOWN : 34 (LEFT), OM34/44/51 (RIGHT)

HH-THEODORA

GRAY  
GLAMOUR



COLOR SHOWN : 56 (LEFT), OM34/44/51 (RIGHT)

HH-VERONICA

AVAILABLE COLORS :

HH-ADDISON, HH-ASHA, HH-DINA, HH-EDEN, HH-MARINETTE, HH-THEODORA :  
NATURAL BLACK, NATURAL BROWN, 34, OM280/34/44, OM34/44/51, HL34/51

HH-HARRIET : NATURAL BLACK, NATURAL BROWN, 34, OM280/34/44, OM34/44/51, FF34/51  
HH-VERONICA : NATURAL BLACK, NATURAL BROWN, 34, 56, OM280/34/44, OM34/44/51

SPECIAL  
COLORS



\*NATURAL BROWN IS BLEACH & DYE FRIENDLY.



**Fab & Fly**<sup>TM</sup>  
100% UNPROCESSED HUMAN HAIR



COLOR SHOWN : NATURAL BROWN

**HH-ADHARA**



COLOR SHOWN : NATURAL BROWN

**HH-BLOOM**



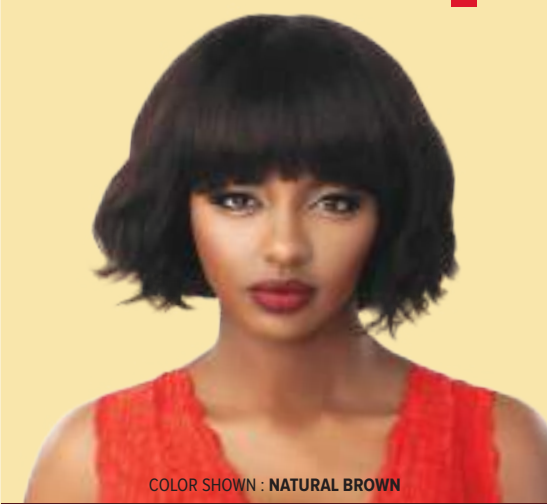
COLOR SHOWN : NATURAL BROWN

**HH-BLOSSOM**



COLOR SHOWN : NATURAL BROWN

**HH-CLOVER**



COLOR SHOWN : NATURAL BROWN

**HH - EVELYN**



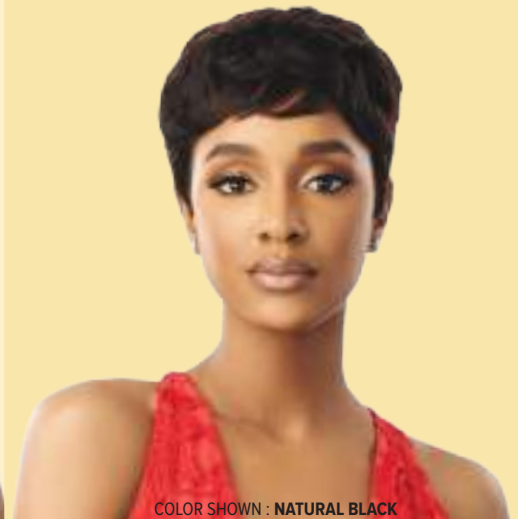
COLOR SHOWN : NATURAL BROWN

**HH-JUDE**



COLOR SHOWN : NATURAL BROWN

**HH-LYRA**



COLOR SHOWN : NATURAL BLACK

**HH-MABEL**



COLOR SHOWN : NATURAL BROWN

**HH-MAYSIE**



COLOR SHOWN : NATURAL BROWN

**HH-MISTY**



COLOR SHOWN : NATURAL BLACK

**HH-SELMA**



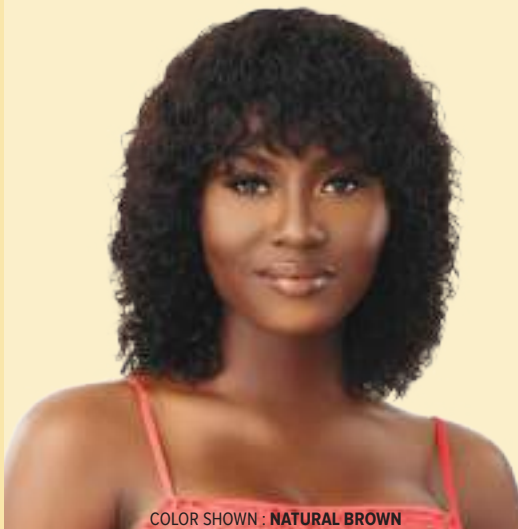
COLOR SHOWN : NATURAL BROWN

**HH-TULIA**



COLOR SHOWN : NATURAL BROWN

**HH-VENUS**



COLOR SHOWN : NATURAL BROWN

**HH-VIVIA**



**color queen**

COLOR SHOWN : DX MIDNIGHT BLUE,DX CHERRY ROUGE (LEFT TO RIGHT)

**HH-BEVERLY**



**color queen**

COLOR SHOWN : DR GOLD RUSH, DX MIDNIGHT PURPLE (LEFT TO RIGHT)

**HH-ESME**



**color queen**

COLOR SHOWN : DX NATURAL BROWN, DX GOLD RUSH (LEFT TO RIGHT)

**HH-SOFINA**

AVAILABLE COLORS :  
NATURAL BLACK, NATURAL BROWN

HH-BEVERLY, HH-ESME : NATURAL BLACK, NATURAL BROWN, DR GOLD RUSH, DR SANDY BLONDE, DX CHERRY ROUGE, DX MIDNIGHT BLUE, DX MIDNIGHT PURPLE, DX STONE GRAY

HH-SOFINA : NATURAL BLACK, NATURAL BROWN, DX GOLD RUSH, DR SANDY BLONDE, DX CHERRY ROUGE, DX MIDNIGHT BLUE, DX MIDNIGHT PURPLE, DX STONE GRAY

SPECIAL COLORS





# melted HAIRLINE

LACE FRONT WIG

Feel pretty in Pascale this spring with its shoulder-length bob in romantic curls.

- Soft HD Transparent Lace
- 5" Deep Parting
- Completely Pre-Plucked Hairline & Sideburns
- Pre-Attached Wide Elastic Band for Secure Fit
- Natural Baby Hairs
- Redesigned ComfortFit Ear Contour
- Heat Resistant Fiber



COLOR SHOWN :  
DRFF CAJUN SPICE (RIGHT)  
DRFF2/TOASTED ALMOND (LEFT)  
DRFF4/STRAWBERRY GOLD (BOTTOM)

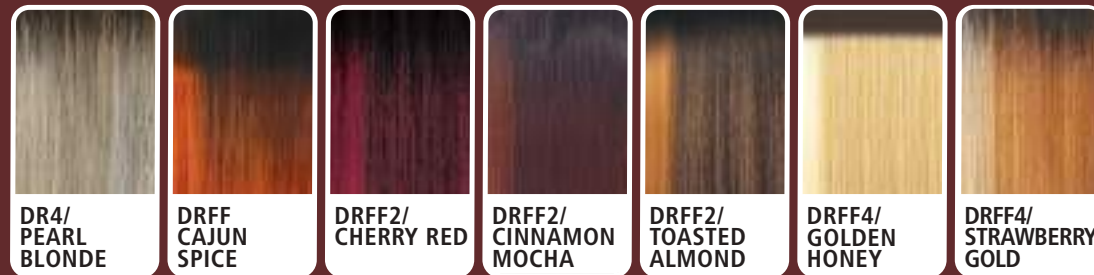


## PASCALE 16"

AVAILABLE COLORS :

- 1, 1B, 2, 613,
- DR4/PEARL BLONDE,
- DRFF CAJUN SPICE,
- DRFF2/CHERRY RED,
- DRFF2/CINNAMON MOCHA,
- DRFF2/TOASTED ALMOND,
- DRFF4/GOLDEN HONEY,
- DRFF4/STRAWBERRY GOLD

### SPECIAL COLORS



# Outre<sup>®</sup> LACE FRONT DELUXE

PREMIUM SYNTHETIC FIBER

Dive in with soft ripple waves with our new Dilan wig, featuring a deeper and deluxe hand-tied lace area.

- Ear-to-Ear HD Transparent Lace
- Deeper Pre-Plucked, Hand-Tied Lace Edges
- 5" Deep Parting
- Natural Baby Hairs
- Heat Resistant Fiber



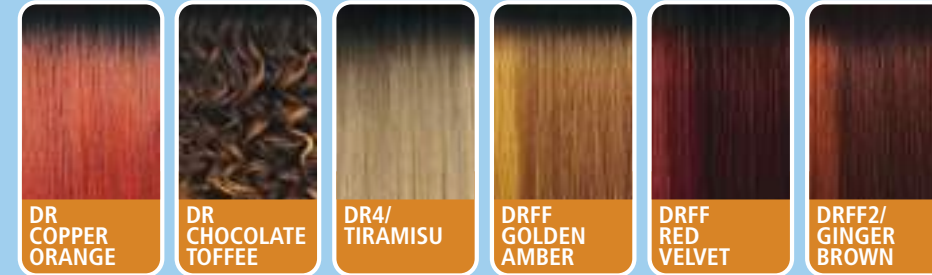
COLOR SHOWN:  
DR CHOCOLATE TOFFEE (LEFT)  
DR4/TIRAMISU (RIGHT)



## DILAN 16"



### SPECIAL COLORS



AVAILABLE COLORS :

- 1, 1B, 2, 613,
- DR COPPER ORANGE,
- DR CHOCOLATE TOFFEE,
- DR4/TIRAMISU,
- DRFF GOLDEN AMBER,
- DRFF RED VELVET,
- DRFF2/GINGER BROWN





# COLOR BOMB®

PREMIUM SYNTHETIC FIBERS

You can't cool down the heat of Kaycee, available in 24" and seven fiery colors.

- Stunning, Salon-Inspired Colors
- Pre-Plucked HD Transparent Lace
- Natural Baby Hair
- Premium Synthetic Fibers
- Selfie-Worthy Styles



- ✓ 5" DEEP LACE PARTING
- ✓ NATURAL BABY HAIRS
- ✓ PRE-PLUCKED HD LACE



**KAYCEE 24"**

COLOR SHOWN:  
HOT RED (LEFT)  
FLAMINGO PINK (RIGHT)



EMERALD GREEN    PURPLE DREAM    BURNT COPPER    VANILLA BLONDE    BLUE MOON

AVAILABLE COLORS :  
1, 1B, BLUE MOON, BURNT COPPER, EMERALD GREEN, FLAMINGO PINK, HOT RED, PURPLE DREAM, VANILLA BLONDE



# Lace front®

LACE FRONT WIG

Dinella is an elegant bob with delicate, layered side bangs.

- HD Transparent Lace
- 5" Deep Parting
- Breathable, Comfortable Cap
- Natural Baby Hair
- Pre-Plucked Lace Parting
- Heat Resistant Fiber



COLOR SHOWN :  
DRST2/CHOCOLATE CARAMEL (LEFT),  
DR COPPER ORANGE (RIGHT)



**DINELLA 12"**    PRE-PLUCKED LACE PARTING    NATURAL BABY HAIRS    5" DEEP PARTING

AVAILABLE COLORS :

1, 1B, 2, 613,  
DR ALMOND SPICE,  
DR COPPER ORANGE,  
DRST2/CHOCOLATE CARAMEL,  
DR4/GOLDEN HONEY BLONDE,  
DRFF RED VELVET,  
DRFF2/GINGER BROWN

SPECIAL COLORS





# wigpop®

SYNTHETIC FULL WIG

# colorplay

Trixie's tips are dipped in electric color blends and styled in a classic bob with bangs.

- 100% Synthetic Fibers
- Custom Designed Multi-Tone Colors
- Great Value
- Ready to Wear & Go
- Heat-Styling Friendly



COLOR SHOWN  
TD WILD RAINBOW (RIGHT)  
TD COSMIC MAGENTA (LEFT)

**TRIXIE**

**12"**



TD MIDNIGHT BLAZE    TD CREME BRULEE    TD AURORA GREEN    TD SMOKEY LAVENDER    TD VAMPIRE NIGHT

AVAILABLE COLORS :  
1, 1B, TD AURORA GREEN, TD COSMIC MAGENTA, TD CREME BRULEE, TD MIDNIGHT BLAZE, TD SMOKEY LAVENDER,  
TD VAMPIRE NIGHT, TD WILD RAINBOW

# wigpop®

SYNTHETIC FULL WIG



COLOR SHOWN:  
DR2/GOLDEN BALAYAGE (LEFT) ,  
DR GINGER COPPER BALAYAGE (RIGHT)



Long, gorgeous waves; easy to wear; and budget-friendly. Amoya is everything you want in a wig and more!

- Easy to Wear, Elevated Looks
- Special Styles: More curls, more textures, more length
- Special Colors
- Ready to Wear & Go
- Heat-Styling Friendly

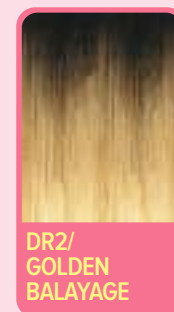
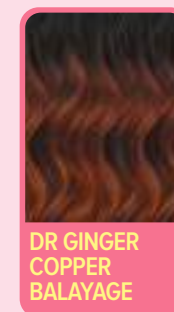
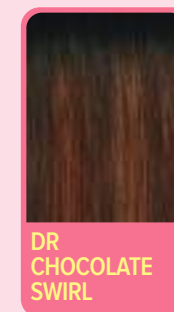
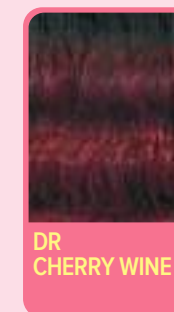


**AMOYA** **30"**

**SPECIAL COLORS**

AVAILABLE COLORS :

- 1, 1B, 2,
- DR CHERRY WINE,
- DR CHOCOLATE SWIRL,
- DR GINGER COPPER BALAYAGE,
- DR HAZELNUT BROWN,
- DR2/GOLDEN BALAYAGE





# Outre® FEATURED FAVORITES

**My TRESSES**  
PREMIUM 100% HUMAN HAIR  
**BLACK LABEL**

HD TRANSPARENT LACE  
**Custom Colored**  
LACE FRONT WIG

HAND-TIED HAIRLINE  
LACE FRONT

COLOR SHOWN : OMFF HONEY CREAM (LEFT), OMFF BERRY BURGUNDY (RIGHT)      COLOR SHOWN : OMFF GOLDEN BRONZE (LEFT), OMFF BERRY BURGUNDY (RIGHT)

**HH-CASSINA 22"**      **HH-LETISHA 12"**

AVAILABLE COLORS: NATURAL BLACK, NATURAL BROWN, OMFF BERRY BURGUNDY, OMFF GOLDEN BRONZE, OMFF HONEY CREAM

**My TRESSES**  
100% HUMAN HAIR  
**PURPLE LABEL**

**COLORMORE**  
FULL WIG

PRE-BLEACHED  
READY TO COLOR

**HH-BLONDE BOB 10"**      **HH-BLONDE BOB 12"**      **HH-BLONDE BOB 14"**

AVAILABLE COLORS: 613      AVAILABLE COLORS: 613      AVAILABLE COLORS: 613

**My TRESSES**  
100% UNPROCESSED HUMAN HAIR  
**GOLD LABEL**

Lace Front Wig

HD TRANSPARENT LACE

HAND-TIED HAIRLINE  
LACE FRONT

9+ QUALITY GRADE BUNDLE HAIR  
BLEACH / DYE / CUSTOMIZE

COLOR SHOWN : NATURAL BROWN      COLOR SHOWN : NATURAL BROWN

**HH-KRISTABEL 22"**      **HH-NASHIRA 12"**

AVAILABLE COLORS: NATURAL BLACK, NATURAL BROWN

**THE DAILY WIG**  
100% UNPROCESSED HUMAN HAIR  
LACE PART WIG

WET & WAVY

HAND-TIED DEEP LACE PART

WEAR ME ON THE DAILY.

**HH-W&W NATURAL DEEP 12"**      **HH-W&W NATURAL DEEP 14"**      **HH-NATURAL AFRO**

AVAILABLE COLORS: NATURAL BLACK, NATURAL BROWN      AVAILABLE COLORS: NATURAL BLACK, NATURAL BROWN      AVAILABLE COLORS: NATURAL BLACK, NATURAL BROWN



# melted HAIRLINE

LACE FRONT WIG



COLOR SHOWN : DR4/FROSTED HONEY BROWN (LEFT), DR2/CINNAMON WINE (RIGHT)

## LAURENCE 14"

AVAILABLE COLORS:  
1, 1B, 2, 613, DR CHOCOLATE SWIRL, DR2/CINNAMON WINE, DR4/FROSTED HONEY BROWN, DR4/GOLDEN HONEY BLONDE, DRFF GOLDEN AMBER, DRFF2/GINGER BROWN



# PERFECT HAIRLINE



COLOR SHOWN : DR CHERRY CRUSH (LEFT), DR JAVA FROST (RIGHT)

## LISSIE 13X4 12"

AVAILABLE COLORS:  
1, 1B, 2, 613, DR CHERRY CRUSH, DR CHOCOLATE SWIRL, DR JAVA FROST, DR4/GOLDEN HONEY BLONDE, 3DRFF CAJUN SPICE



COLOR SHOWN : DRFF2/GINGER BROWN (LEFT), CAMEL (RIGHT)

## KALLARA 34"

AVAILABLE COLORS:  
1, 1B, 2, 613, CAMEL, DR CHOCOLATE SWIRL, DR JAVA FROST, DR4/GOLDEN HONEY BLONDE, DRFF GOLDEN AMBER, DRFF RED VELVET, DRFF2/GINGER BROWN



COLOR SHOWN : DR CHOCOLATE SWIRL (LEFT), DR2/CREAMY TOFFEE (RIGHT)

## MIABELLA 22"

AVAILABLE COLORS:  
1, 1B, 2, 613, DR CHOCOLATE SWIRL, DR COPPER BROWN, DR JAVA FROST, DR2/CREAMY TOFFEE, DR4/GOLDEN HONEY BLONDE, DRFF GOLDEN AMBER, DRFF RED VELVET



COLOR SHOWN : DR2/BUTTERED PECAN

## EVERETTE 13X6 26"

AVAILABLE COLORS:  
1, 1B, 2, 613, DR CHOCOLATE SWIRL, DR2/BUTTERED PECAN, DR4/SANDY BLONDE, DR4/GOLDEN HONEY BLONDE, DRFF RED VELVET, DRFF2/GINGER BROWN, DRFF4/BUTTERED TOAST



COLOR SHOWN : DRFF2/GINGER BROWN

## BEXLEY 13X6 28"

AVAILABLE COLORS:  
1, 1B, 2, 27, 613, CHOCOLATE SWIRL, CINNAMON WINE, DR RED VELVET, DR4/GOLDEN HONEY BLONDE, DRFF GOLDEN AMBER, DRFF2/GINGER BROWN, DRFF4/BUTTERED TOAST



COLOR SHOWN : DRFF6/HONEY OVER CHOCOLATE

## FREYA 13X6 22"

AVAILABLE COLORS:  
1, 1B, 2, 613, DR4/GOLDEN HONEY BLONDE, DRST MAPLE BROWN, DRFF GOLDEN AMBER, DRFF RED VELVET, DRFF6/HONEY OVER CHOCOLATE, 3DRFF CAJUN SPICE



# SleekLay<sup>®</sup>

LACE FRONT WIG Part



COLOR SHOWN : BLACK CHERRY MOUSSE

COLOR SHOWN : DR4/HONEY BLONDE

## PERLA 22"

AVAILABLE COLORS:  
1, 1B, 2, 613, CHOCOLATE COVERED HONEY, BLACK CHERRY MOUSSE, DR2/HAZELNUT, DR4/GOLDEN HONEY MELT, DR4/HONEY GINGER, DRFF2/CINNAMON SPICE

## ASMARA 26"

AVAILABLE COLORS:  
1, 1B, 2, 613, CHOCOLATE FROST, DR2/CINNAMON SPICE, DR2/HAZELNUT, DR4/HONEY BLONDE, DRFF BLACK CHERRY, 3DRFF AMBER BLONDE



COLOR SHOWN : DRFF4/FROSTED DARK BLONDE

## GEOVANNA 22"

AVAILABLE COLORS:  
1, 1B, 2, 613, DR CHOCOLATE SWIRL, DR4/HONEY GINGER, DR4/SUMMER BLONDE, DRFF BLACK CHERRY, DRFF HONEY BROWN, DRFF2/CINNAMON SPICE, DRFF4/FROSTED DARK BLONDE



COLOR SHOWN : DRFF4/CHAMPAGNE

## LAVETTE 22"

AVAILABLE COLORS:  
1, 1B, 2, 613, DR CHOCOLATE SWIRL, DR4/GOLDEN AMBER, DRFF BLACK CHERRY, DRFF HONEY BROWN, DRFF2/GINGER COPPER, DRFF4/CHAMPAGNE



COLOR SHOWN : DR CHOCOLATE SWIRL

## NELLA 12"

AVAILABLE COLORS:  
1, 1B, 2, 613, DR CHOCOLATE SWIRL, DR4/HONEY GINGER, DR4/SUMMER BLONDE, DRFF BLACK CHERRY, DRFF HONEY BROWN, DRFF2/GINGER COPPER

# Outre<sup>®</sup>

## LACE FRONT DELUXE

PREMIUM SYNTHETIC FIBER



COLOR SHOWN : DRFF CHOCOLATE TRUFFLE (LEFT), DRFF CARAMEL MOCHA (RIGHT)

COLOR SHOWN : DRFF GINGER COCO BROWN (LEFT), DRP PASSION ROSE (RIGHT)

## COLLINA 12"

AVAILABLE COLORS:  
1, 1B, 2, 613, DR RED VELVET, DR2/CINNAMON SPICE, DR4/BL GOLDEN HONEY, DRFF CARAMEL MOCHA, DRFF CHOCOLATE TRUFFLE, DRFF HAZELNUT

## SILVANA 12"

AVAILABLE COLORS:  
1, 1B, 2, 613, CHOCOLATE SWIRL, DR2/GOLDEN HONEY BLONDE, DRFF GINGER COCO BROWN, DRFF HONEY BROWN, DRFF2/CINNAMON SPICE, DRP PASSION ROSE

# Lace Front

## COLOR BOMB

PREMIUM SYNTHETIC FIBERS



## LEVANA 22"

DRSD CHOCOLATE CARAMEL DRSD SIENNA COPPER DRSD CHERRY BOMB DRSD SUNFIRE NIGHT DRSD IVORY BLONDE

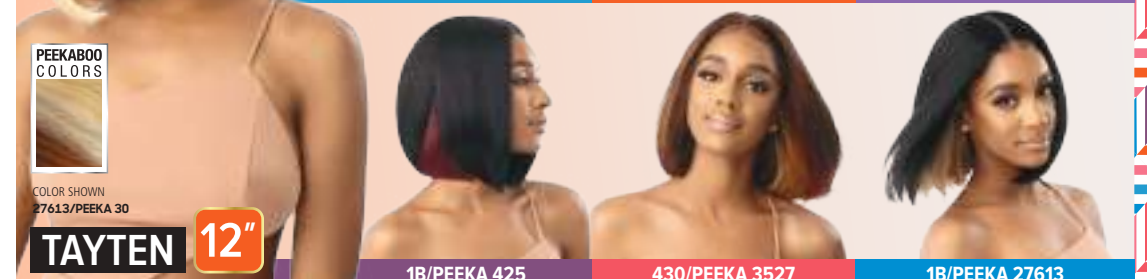
AVAILABLE COLORS :  
1, 1B, DRSD CHERRY BOMB, DRSD CHOCOLATE CARAMEL, DRSD IVORY BLONDE, DRSD SIENNA COPPER, DRSD SUNFIRE NIGHT



35/PEEKA 27613

425/PEEKA RED99J

4/PEEKA 2730



COLOR SHOWN 27613/PEEKA 30

## TAYTEN 12"

1B/PEEKA 425

430/PEEKA 3527

1B/PEEKA 27613

AVAILABLE COLORS :  
1, 1B, 1B/PEEKA 425, 1B/PEEKA 27613, 4/PEEKA 2730, 430/PEEKA 3527, 425/PEEKA RED99J, 35/PEEKA 27613, 27613/PEEKA 30



# Lace front

LACE FRONT WIG



NATURAL BABY HAIRS

COLOR SHOWN : DRFF HONEY BROWN

**AMADIO 20"**

AVAILABLE COLORS:  
1, 1B, 2, CHOCOLATE, GOLDEN AMBER, DRFF BLACK CHERRY, DRFF HONEY BROWN, DRFF GINGER COCO BROWN, DRFF2/BUTTERSCOTCH, DRFF2/CINNAMON SPICE



NATURAL BABY HAIRS

COLOR SHOWN : DRFF HONEY BROWN

**CAPRICE 16"**

AVAILABLE COLORS:  
1, 1B, 2, CHOCOLATE FROST, DR BLACK CHERRY, DR2/CINNAMON SPICE, DR2/GOLDEN HONEY BLONDE, DR2/HAZELNUT, DRFF HONEY BROWN

# EveryWear

LACE FRONT WIG



COLOR SHOWN : DRFF2/VANILLA CHOCOLATE (LEFT), DRFF2/GINGER BROWN (RIGHT)

**EVERY17 20"**

AVAILABLE COLORS:  
1, 1B, 2, 613, CHOCOLATE SWIRL, HAVANA BROWN, DRST2/CHOCOLATE CARAMEL, DR4/GOLDEN HONEY BLONDE, DRFF RED VELVET, DRFF2/GINGER BROWN, DRFF2/VANILLA CHOCOLATE



5" DEEP PARTING

PRE-PLUCKED LACE PARTING

NATURAL BABY HAIRS

COLOR SHOWN : DRFF4/BUTTERED TOAST

**CHRISTA 18"**

AVAILABLE COLORS:  
1, 1B, 2, 613, DR CHOCOLATE SWIRL, DR4/GOLDEN HONEY BLONDE, DRFF GOLDEN AMBER, DRFF RED VELVET, DRFF2/GINGER BROWN, DRFF4/BUTTERED TOAST



PRE-PLUCKED LACE PARTING

NATURAL BABY HAIRS

COLOR SHOWN : DR CHOCOLATE TOFFEE

**EDWINA 12"**

AVAILABLE COLORS:  
1, 1B, 2, 613, DR CHERRY CRUSH, DR CHOCOLATE TOFFEE, DR4/GOLDEN HONEY BLONDE, DRST DRAGON FRUIT, DRST GINGER PLUM, DRFF GOLDEN AMBER, DRFF2/GINGER BROWN



NATURAL BABY HAIRS

COLOR SHOWN : 3DRFF VANILLA CAPPUCCINO

**SEPHINA 28"**

AVAILABLE COLORS:  
1, 1B, 2, 613, CHOCOLATE, DR2/CINNAMON SPICE, DR4/FAIRY BLONDE, DR4/HONEY GINGER, DRFF BLACK CHERRY, DRFF GINGER COCO BROWN, 3DRFF VANILLA CAPPUCCINO



COLOR SHOWN : DR2/CINNAMON WINE (LEFT), DRST2/CHOCOLATE CARAMEL (RIGHT)

**EVERY19 10"**

AVAILABLE COLORS:  
1, 1B, 2, 613, CHOCOLATE SWIRL, DR2/CINNAMON WINE, DR2/GINGER BROWN, DR2/GOLDEN AMBER, DRST2/CHOCOLATE CARAMEL, DR4/GOLDEN HONEY BLONDE, DR4/SANDY BLONDE



COLOR SHOWN : DR CHOCOLATE SWIRL (LEFT), STRAWBERRY BLONDE (RIGHT)

**EVERY20 16"**

AVAILABLE COLORS:  
1, 1B, 2, 613, HAVANA BROWN, STRAWBERRY BLONDE, DR CHOCOLATE SWIRL, DRST2/CHOCOLATE CARAMEL, DR4/GOLDEN HONEY BLONDE, DRFF RED VELVET, DRFF2/GINGER BROWN



**THE DAILY WIG™**  
PREMIUM SYNTHETIC FIBERS  
**LACE PART WIG**



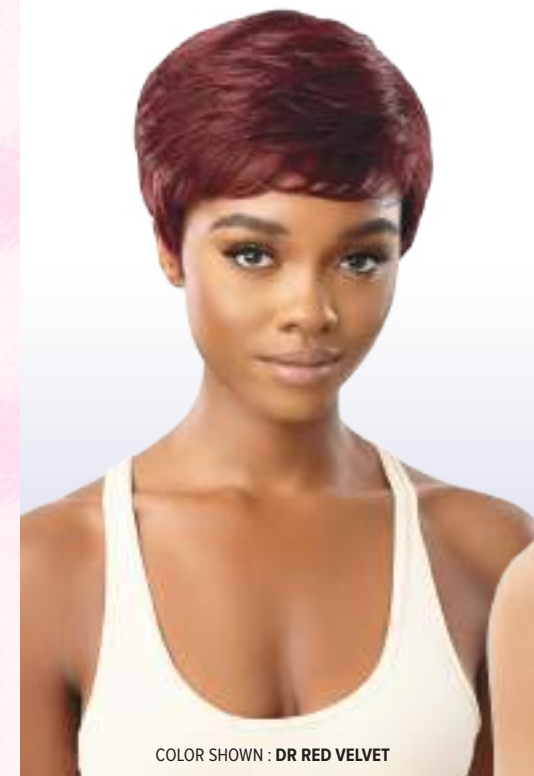
COLOR SHOWN : DRFF RED VELVET

**ADALIA 22"**

AVAILABLE COLORS:  
1, 1B, 2, 613, DR GINGER BROWN, DR2/CHOCOLATE SWIRL, DR4/GOLDEN HONEY BLONDE,  
DR4/HONEY BROWN, DRFF RED VELVET

**wigpop®**

**SYNTHETIC FULL WIG**



COLOR SHOWN : DR RED VELVET

**MIKI**

AVAILABLE COLORS:  
1, 1B, 2, 613, S1B/30, DR CHAI LATTE, DR RED VELVET,  
DR2/CHOCOLATE SWIRL, DR2/HONEY BROWN, DR4/HONEY GOLD



COLOR SHOWN : DR4/GOLDEN HONEY BLONDE

**RIMA**

AVAILABLE COLORS:  
1, 1B, 2, 613, DR CHAI LATTE, DR GINGER TOFFEE, DR RED VELVET,  
DR2/CHOCOLATE SWIRL, DR4/GOLDEN HONEY BLONDE



COLOR SHOWN : DR4/GOLDEN HONEY BLONDE

**ADANA 16"**

AVAILABLE COLORS:  
1, 1B, 2, 613, DR GINGER BROWN, DR2/CHOCOLATE SWIRL,  
DR4/GOLDEN HONEY BLONDE, DR4/HONEY BROWN, DRFF RED VELVET



COLOR SHOWN : 1B

**BECCA 12"**

AVAILABLE COLORS:  
1, 1B, 2, DR2/CHOCOLATE SWIRL, DR2/GOLDEN COPPER,  
DR4/GINGER BROWN, DR4/HONEY BROWN, DR4/MUSHROOM BLONDE,  
DRFF RED VELVET



COLOR SHOWN : DR2/GOLDEN COPPER

**JAMELIA 26"**

AVAILABLE COLORS:  
1, 1B, 2, DR2/CHOCOLATE SWIRL, DR2/GOLDEN COPPER,  
DR4/GINGER BROWN, DR4/HONEY BROWN, DR4/MUSHROOM BLONDE,  
DRFF RED VELVET



COLOR SHOWN : CHOCOLATE COVERED HONEY

**AGATHA 12"**

AVAILABLE COLORS:  
1, 1B, 2, 613, BLACK CHERRY MOUSSE, CHOCOLATE COVERED HONEY,  
GINGER BROWN, STRAWBERRY BLONDE, DR HONEY AUBURN,  
DR4/SUMMER BLONDE



COLOR SHOWN : 425/PEEKA RED99J

**HONEY**

AVAILABLE COLORS:  
1, 1B, 2, 613, 425/PEEKA RED99J, 430/PEEKA 3527,  
GINGER BROWN, STRAWBERRY BLONDE, DR HONEY AUBURN,  
DR COPPER ORANGE, DR4/SANDY BLONDE



COLOR SHOWN : DR RED VELVET

**BRETT**

AVAILABLE COLORS:  
1, 1B, 2, 613, DR GINGER BROWN, DR RED VELVET,  
DR2/CHOCOLATE SWIRL, DR2/HONEY BROWN,  
DR4/GOLDEN HONEY BLONDE



COLOR SHOWN : DR4/STRAWBERRY GOLD

**MERIDA 14"**

AVAILABLE COLORS:  
1, 1B, 2, 613, DR GINGER TOFFEE, DR RED VELVET,  
DR2/HONEY BROWN, DR2/CHOCOLATE SWIRL,  
DR4/STRAWBERRY GOLD



**converti-cap**  
PREMIUM SYNTHETIC FIBERS

DELUXE CAP LAYS FLAT

BACTERIA-RESISTANT  
TESTED & APPROVED BY FDA

HEAT RESISTANT FIBER  
SAFE UP TO 400°F  
HIGH TEX



COLOR SHOWN : DRTD WALNUT TOFFEE

COLOR SHOWN : DR JAVA FROST

**TWIST & TURN 14"**

**CHARMING WAVES 14"**

AVAILABLE COLORS:  
1, 1B, 2, DR CHERRY CRUSH, DR2/GINGER BROWN, DR2/GOLDEN AMBER, DRST DRAGON FRUIT, DRST GINGER PLUM, DRST MAPLE BROWN, DRTD WALNUT TOFFEE

AVAILABLE COLORS:  
1, 1B, 2, DR CHOCOLATE CREAM, DR CHOCOLATE SWIRL, DR JAVA FROST, DR RED VELVET, DR2/GINGER BROWN, DR2/GOLDEN AMBER, DR2/GOLDEN HONEY BLONDE

**Quick WEAVE.**

**NEESHA**  
SOFT & NATURAL

HEAT RESISTANT FIBER  
SAFE UP TO 400°F  
HIGH TEX

NEW! HALF WIG CAP  
REQUIRES LESS LEAVE-OUT  
LAYS FLAT



COLOR SHOWN : DR GINGER BROWN

COLOR SHOWN : 1B

**NEESHA H303 28"**

**NEESHA H305 18"**

AVAILABLE COLORS:  
1, 1B, 2, DR GINGER BROWN, DR RED VELVET, DR2/CHOCOLATE SWIRL, DR2/HONEY BROWN, DR4/GOLDEN HONEY BLONDE

AVAILABLE COLORS:  
1, 1B, 2, DR GINGER BROWN, DR RED VELVET, DR2/CHOCOLATE SWIRL, DR2/HONEY BROWN, DR4/GOLDEN HONEY BLONDE



COLOR SHOWN : DR2/HONEY BROWN (LEFT), DR GINGER TOFFEE (RIGHT)

COLOR SHOWN : DR PAPRIKA SPICE (LEFT), DR HONEY AUBURN (RIGHT)

**SASSY BELLE 14"**

**LUSCIOUS ANGEL 24"**

AVAILABLE COLORS:  
1, 1B, 2, DR CHAI LATTE, DR GINGER TOFFEE, DR RED VELVET, DR2/CHOCOLATE SWIRL, DR2/HONEY BROWN, DR4/GOLDEN HONEY BLONDE

AVAILABLE COLORS:  
1, 1B, 2, DR GINGER TOFFEE, DR HONEY AUBURN, DR PAPRIKA SPICE, DR RED VELVET, DR2/CHOCOLATE SWIRL, DR2/HONEY BROWN, DR4/GOLDEN HONEY BLONDE

**Big Beautiful Hair**

**LEAVE OUT WIG**  
100% HUMAN HAIR PREMIUM BLEND

U-PART CAP  
FOR LEAVE OUT



COLOR SHOWN : NATURAL BLACK

COLOR SHOWN : NATURAL BLACK

**CURLY TWIST 14"**

**PASSION COILS 20"**

AVAILABLE COLORS:  
JET BLACK, NATURAL BLACK, NATURAL BROWN, CHOCOLATE BROWN, DR CHAI LATTE, DR DRAGON FRUIT, DR1B/2T3027, DR4/2T27613

AVAILABLE COLORS:  
JET BLACK, NATURAL BLACK, NATURAL BROWN, CHOCOLATE BROWN, DR CHAI LATTE, DR DRAGON FRUIT, DR1B/2T3027, DR4/2T27613



X-Pression  
**Twisted Up®**

SMALLER CURL

MEDIUM

BIGGER CURL

**4C**

**SPRINGY AFRO TWIST**



STYLE & COLOR SHOWN :  
SPRINGY AFRO TWIST 24" | 2T99J/350 + 1B



**4A**

**SPRINGY BOHEMIAN TWIST**



STYLE & COLOR SHOWN :  
SPRINGY BOHEMIAN TWIST 30" | DRAGON FRUIT



**3C**

**WATERWAVE FRO TWIST**



STYLE & COLOR SHOWN :  
WATERWAVE FRO TWIST SUPER LONG 3X / 1B



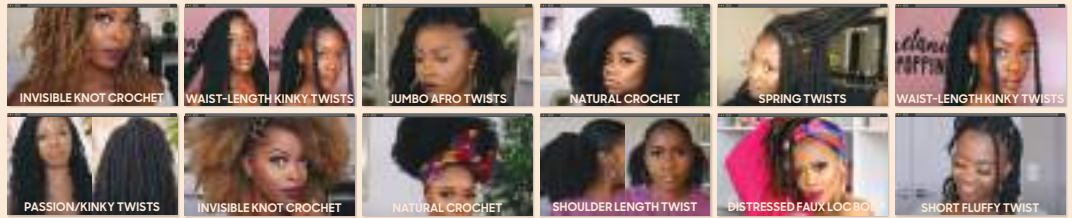
**MIX & MATCH**

**THE HAIR THAT DOES IT ALL**

Crochet, ponytails, twists and more. It's up to you how you twist it up.



STYLE & COLOR SHOWN :  
SPRINGY AFRO TWIST 16" 3X + X-PRESSION PRE-STRETCHED / 1B



AVAILABLE LENGTHS & COLORS :

**SPRINGY AFRO TWIST 12" 2X** : 1, 1B, 2, 4, 27, 30, 2T1B/27, 2T1B/30, 2T1B/350, 2T1B/425

**SPRINGY AFRO TWIST 16" 3X** : 1, 1B, 2, 4, 27, 30, 51, 350, 425, 613, 950, 2T1B/27, 2T1B/30, 2T1B/350, 2T1B/425, 2T1B/BLUE, 2T1B/LIME GREEN, 2T1B/PURPLE, 2T4/30, 2T99J/350, BRIGHT RED, CARNIVAL, CHAMPAGNE AMBER, DEEP BLUE, DEEP PURPLE, HOT PINK, LATTE, LIME GREEN, MERMAID, ORANGE SODA, SHERBERT, SNOW BISCUIT, STRIKE, SUNKISS

**SPRINGY AFRO TWIST 24" 3X** : 1, 1B, 2, 4, 27, 30, 51, 350, 613, 2T1B/27, 2T1B/30, 2T1B/350, 2T1B/425, 2T1B/BLUE, 2T1B/LIME GREEN, 2T1B/PURPLE, 2T4/30, 2T99J/350, BRIGHT RED, DEEP BLUE, DEEP PURPLE, HOT PINK, LIME GREEN

**SPRINGY AFRO TWIST 30" 3X** : 1, 1B, 2, 4, 613, 2T1B/27, 2T1B/30, 2T1B/350, 2T1B/425

**SPRINGY BOHEMIAN TWIST 16" / 24" / 30" 3X** : 1, 1B, 2, 4, 613, 2T1B/27, 2T1B/30, 2T1B/425, MACCHIATO, DRAGON FRUIT

**WATERWAVE FRO TWIST 22" 2X** : 1, 1B, 2, 4, 51, 613, 2T1B/27, 2T1B/30, MACCHIATO, DRAGON FRUIT

**WATERWAVE FRO TWIST SUPER LONG 3X** : 1, 1B, 2, 4, 27, 30, 51, 425, 613, 2T1B/27, 2T1B/30, MACCHIATO, DRAGON FRUIT, BLUE, PURPLE, RED, HOT PINK

**WATERWAVE FRO TWIST 26" EXTRA SUPER LONG 3X** : 1, 1B, 2, 4, 2T1B/27, 2T1B/30, MACCHIATO, DRAGON FRUIT