

NOVEMBER 2024

®

Ouvre



STYLE & COLOR SHOWN:
PERFECT HAIRLINE TRUE FRONTAL PEAK 703 | DRFF2/VANILLA MOCHACCINO (LEFT)
PERFECT HAIRLINE TRUE FRONTAL PEAK 701 | GINGER (RIGHT)

Ouvre
85 Oxford Drive,
Moonachie, NJ 07074
USA

PERFECT HAIRLINE
TRUE FRONTAL:



THE WIG REDEFINING
HOLIDAY HAIR 🍂🍁🍊🍋

IN THIS ISSUE


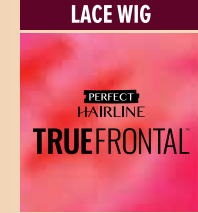











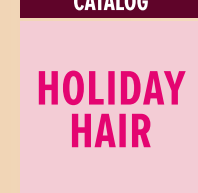
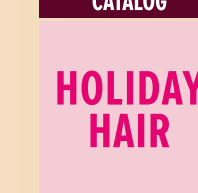
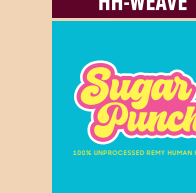
Prepare for your most glamorous Thanksgiving yet.

Outre's Perfect Hairline - True Frontal is serving up something new this year: a pre-plucked widow's peak hairline with 13"x6" temple-to-temple lace.

To add some spice, we included a new v-shaped hairline. This viral widow's peak is ready to wear, so you can try the trend this holiday without the high cost of a customized wig.

Mix in your own flavor with Perfect Hairline — True Frontal! Its extra lace space offers unrestricted parting for more styling options. Try half-up looks, keep it sleek and simple, create a cool updo, and more!

Who says family time can't be glam time too? Redefine holiday hair with Perfect Hairline — True Frontal.

<p>HH-LACE WIG 03 HH-NATURAL PIXIE</p> 	<p>LACE WIG 04 PERFECT HAIRLINE TRUEFRONTAL PEAK 701 PEAK 702 PEAK 703</p> 	<p>LACE WIG 06 PERFECT HAIRLINE MIKARA ARNELL JAYLIN</p> 	<p>LACE WIG 08 <i>SleekLay</i> Part DANIKA</p> 
<p>LACE WIG 09 TASMIN</p> 	<p>BRAID 10 X-PRESSION</p> 	<p>HH-FULL WIG 12 premium DUBY WIG 100% HUMAN HAIR HH-ALLEN HH-DAFNE</p> 	<p>HH-FULL WIG 14 <i>Fab & Fly</i> GRAY GLAMOUR HH-ARLETTE HH-RANDY</p> 
<p>HH-FULL WIG 15 HH-CEREN</p> 	<p>FULL WIG 16 wigpop SYNTHETIC FULL WIG Style SELECTS KERANA MALINA</p> 	<p>FULL WIG 18 wigpop SYNTHETIC FULL WIG TANDI HADIA</p> 	<p>HALF WIG 20 <i>Quick</i> WEAVE CAMIE WINNIE KEMI</p> 
<p>PONYTAIL 22 BELISSE DORY</p> 	<p>CATALOG 24 HOLIDAY HAIR AIRTIED SWIRLISTA SWOOP SERIES</p> 	<p>CATALOG 26 HOLIDAY HAIR MYLK VELVET LUSH</p> 	<p>HH-WEAVE 28 <i>Sugar Punch</i> SINGLE PACK MULTI PACK LACE CLOSURE 100% UNPROCESSED BODY HUMAN HAIR</p> 



My[®] TRESSES

PREMIUM 100% UNPROCESSED HUMAN HAIR

BLACK LABEL


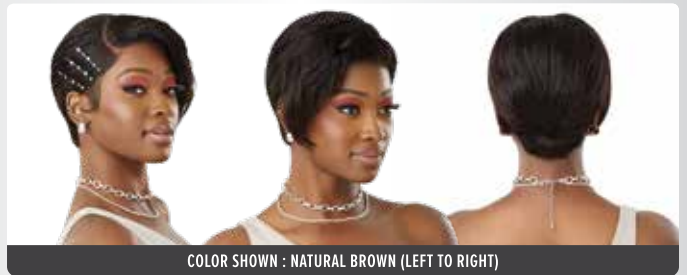
13" x 4"
LACE FRONTAL WIG

If you're looking for something sleek, slicked back, and sexy, then search no more. This human-hair pixie comes with a 13"x4" lace area that lets you pick your part and reveal your hairline.

- 100% Premium Unprocessed Human Hair
- Hand-Tied 13" x 4" Lace Frontal
- HD+ Transparent Lace
- Bleach/Dye/Customize
- Pre-Attached Elastic Band for Glueless Installs
- 3 Pre-Attached Combs for a Secure Fit



COLOR SHOWN : NATURAL BROWN

HH-NATURAL PIXIE

COLOR SHOWN : NATURAL BROWN (LEFT TO RIGHT)

AVAILABLE COLORS : NATURAL BLACK, NATURAL BROWN



COLOR SHOWN : GINGER



COLOR SHOWN : DR2/CREAMY TOFFEE



COLOR SHOWN : DRFF2/VANILLA MOCHACCINO

PERFECT HAIRLINE
TRUEFRONTAL™

FULLY HAND-TIED 13" X 6" LACE FRONTAL WIG

True Frontal Peak 701, Peak 702, and Peak 703 are 13"x6" lace frontal wigs with a twist! These textured, wavy, and layered looks feature an on-trend widow's peak and extra wide lace at the temples for more styles.

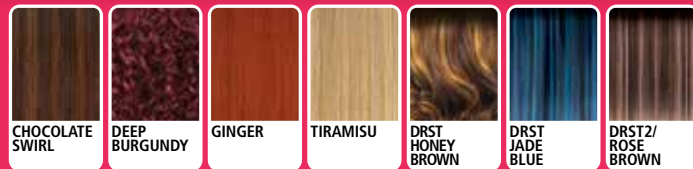
- Fully Hand-Tied 13" x 6" Lace Frontal
- Extends Deeper and Wider at the Temples
- Widow's Peak Hairline / Pre-Shaped & Pre-Plucked
- Ear-to-Ear Soft Vanish HD+ Transparent Lace
- Pre-Styled Baby Hairs
- Comes With Pre-Attached Elastic Band
- Fast, Easy & Effortless Glueless Installs
- Pre-Plucked Hairline
- Heat-Styling Friendly

PEAK 701 26"



COLOR SHOWN : DEEP BURGUNDY, DRST2/ROSE BROWN, GINGER (LEFT TO RIGHT)

AVAILABLE COLORS
1, 1B, 2,
CHOCOLATE SWIRL,
DEEP BURGUNDY,
GINGER,
TIRAMISU,
DRST HONEY BROWN,
DRST JADE BLUE,
DRST2/ROSE BROWN



PEAK 702 26"



COLOR SHOWN : DRFF PLUM WINE, DRST JADE BLUE, DR2/CREAMY TOFFEE (LEFT TO RIGHT)

AVAILABLE COLORS
1, 1B, 2,
CHOCOLATE SWIRL,
GINGER,
TIRAMISU,
DR2/CREAMY TOFFEE,
DRF HOT PINK,
DRFF PLUM WINE,
DRST JADE BLUE



PEAK 703 28"



COLOR SHOWN : ST CHERRY CRUSH, ASH BROWN, DRFF2/VANILLA MOCHACCINO (LEFT TO RIGHT)

AVAILABLE COLORS
1, 1B, 2,
ASH BROWN,
CHOCOLATE SWIRL,
ST CHERRY CRUSH,
STRAWBERRY GOLD,
TIRAMISU,
DRFF2/BRONDE BALAYAGE,
DRFF2/VANILLA MOCHACCINO,
DRST4/GINGER SPICE



PRE-SHAPED WIDOW'S PEAK



VANISH HD+ TRANSPARENT LACE

DEEPER, WIDER 13" X 6" LACE FRONTAL





13" X 4"

COLOR SHOWN : 1B



13" X 6"

COLOR SHOWN : BURGUNDY



COLOR SHOWN : 1B/DRFF TURQUOISE FROST



FROSTED HIGHLIGHTS



PERFECT HAIRLINE™

FULLY HAND-TIED 13"X6" & 13"X4" LACE WIG

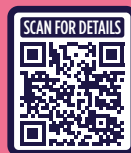
Mikara is a mid-length bob that you can rock all holiday season. Try a half-up hairdo or a flipped-up look for Thanksgiving dinner.

Walk around town with confidence and flawless, flowing waves in the new 32" Arnell unit.

Jaylin is a gorgeous layered unit with a jolt of colorful, frosted highlights.

- Fully Hand-Tied 13" x 6" and 13" x 4" Frontals
- Ear-to-Ear Soft HD Transparent Lace
- Natural Baby Hairs
- Comes With a Pre-Attached Elastic Band
- Fast, Easy & Effortless Glueless Installs
- Pre-Plucked Hairline
- Heat-Styling Friendly

MIKARA 16"



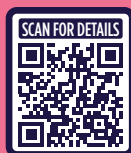
COLOR SHOWN : ASH BROWN MELT, GOLDEN HONEY BLONDE, 1B (LEFT TO RIGHT)

AVAILABLE COLORS

1, 1B, 2, ASH BROWN MELT, BURGUNDY, COCOA CARAMEL, GINGER COPPER KISS, GOLDEN AMBER, GOLDEN HONEY BLONDE, DR4/CARAMEL FUDGE, DRFF2/VANILLA MOCHA



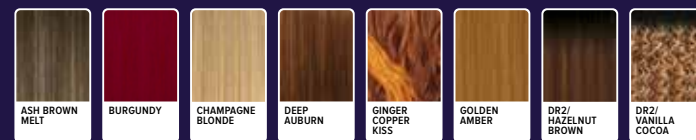
ARNELL 32"



COLOR SHOWN : CHAMPAGNE BLONDE, ASH BROWN MELT, BURGUNDY (LEFT TO RIGHT)

AVAILABLE COLORS

1, 1B, 2, ASH BROWN MELT, BURGUNDY, CHAMPAGNE BLONDE, DEEP AUBURN, GINGER COPPER KISS, GOLDEN AMBER, DR2/HAZELNUT BROWN, DR2/VANILLA COCOA



JAYLIN 26"



COLOR SHOWN : 1B/DRFF SCARLET RED FROST, 1B/DRFF SAPPHIRE FROST, 1B/DRFF COPPER FROST, 2/DRFF2 HONEY FROST, 1B/DRFF TURQUOISE FROST (LEFT TO RIGHT)

AVAILABLE COLORS

1, 1B, 2, BURGUNDY FLAME, CARAMEL BROWN, LIGHT HONEY, 1B/DRFF COPPER FROST, 1B/DRFF SAPPHIRE FROST, 1B/DRFF SCARLET RED FROST, 1B/DRFF TURQUOISE FROST, 2/DRFF2 HONEY FROST



13" X 6"



SleekLay[®]

LACE FRONT WIG Part



COLOR SHOWN : DRFF4/COCOA VANILLA SWIRL

Don't overlook Danika! This short cut comes with more lace space at the part, perfect layers at the chin, and stunning special shades.

- Wider Hand-Tied Lace Part
- Deep C-Shape Side Parting
- Extra Hand-Tied Lace Edges
- Hump-Less, Laid finish
- Pre-Plucked Hairline
- Natural Baby Hairs
- Pre-Attached Wide Elastic Band for Glueless Installs
- Heat-Friendly

Lace front[®]

LACE FRONT WIG



COLOR SHOWN : ST CHOCOLATE GOLD

We made Tasmin for women with taste and class! This wig's curls start just beneath the eyes for a face-framing effect.

- HD Transparent Lace
- Pre-Plucked Parting
- Breathable, Comfortable Cap
- Natural Baby Hairs
- Fast, Easy & Effortless Glueless Installs
- Pre-Attached Wide Elastic Band for a secure fit
- Heat Resistant Fiber



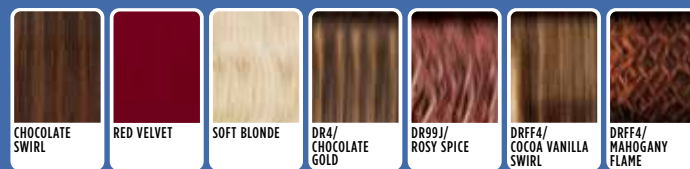
AVAILABLE COLORS

- 1, 1B, 2,
CHOCOLATE SWIRL,
RED VELVET,
SOFT BLONDE,
DR4/CHOCOLATE GOLD,
DR99J/ROSY SPICE,
DRFF4/COCOA VANILLA SWIRL,
DRFF4/UC MAHOGANY FLAME

DANIKA 10"



COLOR SHOWN : DRFF4/UC MAHOGANY FLAME, DRFF4/COCOA VANILLA SWIRL (LEFT TO RIGHT)



TASMIN 16"



COLOR SHOWN : DEEP BURGUNDY, ST CHOCOLATE GOLD (LEFT TO RIGHT)



AVAILABLE COLORS

- 1, 1B, 2,
DEEP BURGUNDY,
GINGER BROWN,
ST CHOCOLATE GOLD,
TIRAMISU, WARM APRICOT,
DR JADE BLUE,
DR LILAC PINK,
DR4/ASH BROWN



NATURAL BABY HAIRS





X-*Pression*[®]

BEYOND BRAIDS THIS IS X-PRESSION.



AVAILABLE LENGTHS :
PRE-STRETCHED BRAID 72" 3X, PRE-STRETCHED BRAID 52" 6X, PRE-STRETCHED BRAID 52" 3X, PRE-STRETCHED BRAID 42" 3X, PRE-STRETCHED BRAID 32" 3X



premium DUBY[®] WIG



COLOR SHOWN : NATURAL HONEY

100% HUMAN HAIR

The star of HH-Allen is its feathered-cut, side-swept bangs and 100% human hair that comes in various color options.

- 100% Premium Human Hair
- A Variety of Classic Styles and Color Options
- Affordable
- Durable and Long Lasting

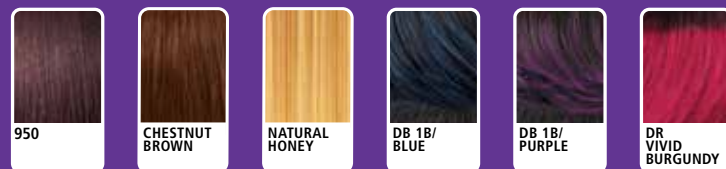
HH-ALLEN



COLOR SHOWN : 950, NATURAL HONEY (LEFT TO RIGHT)

AVAILABLE COLORS

- 1, 1B, 2,
950,
CHESTNUT BROWN,
NATURAL HONEY,
DB 1B/BLUE,
DB 1B/PURPLE,
DR VIVID BURGUNDY



premium DUBY[®] WIG



COLOR SHOWN : DR GINGER

100% HUMAN HAIR

HH-Dafne is pre-bumped and expertly cut. Smooth, tousle, or curl this pixie for additional looks!

- 100% Premium Human Hair
- A Variety of Classic Styles and Color Options
- Affordable
- Durable and Long Lasting

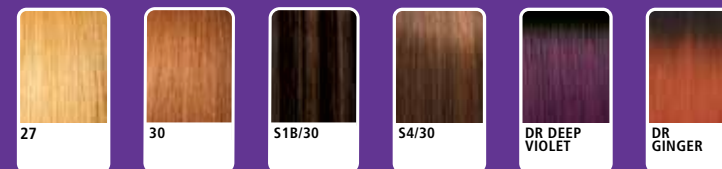
HH-DAFNE



COLOR SHOWN : 1B, DR GINGER (LEFT TO RIGHT)

AVAILABLE COLORS

- 1, 1B, 2,
27, 30,
S1B/30,
S4/30,
DR DEEP VIOLET,
DR GINGER



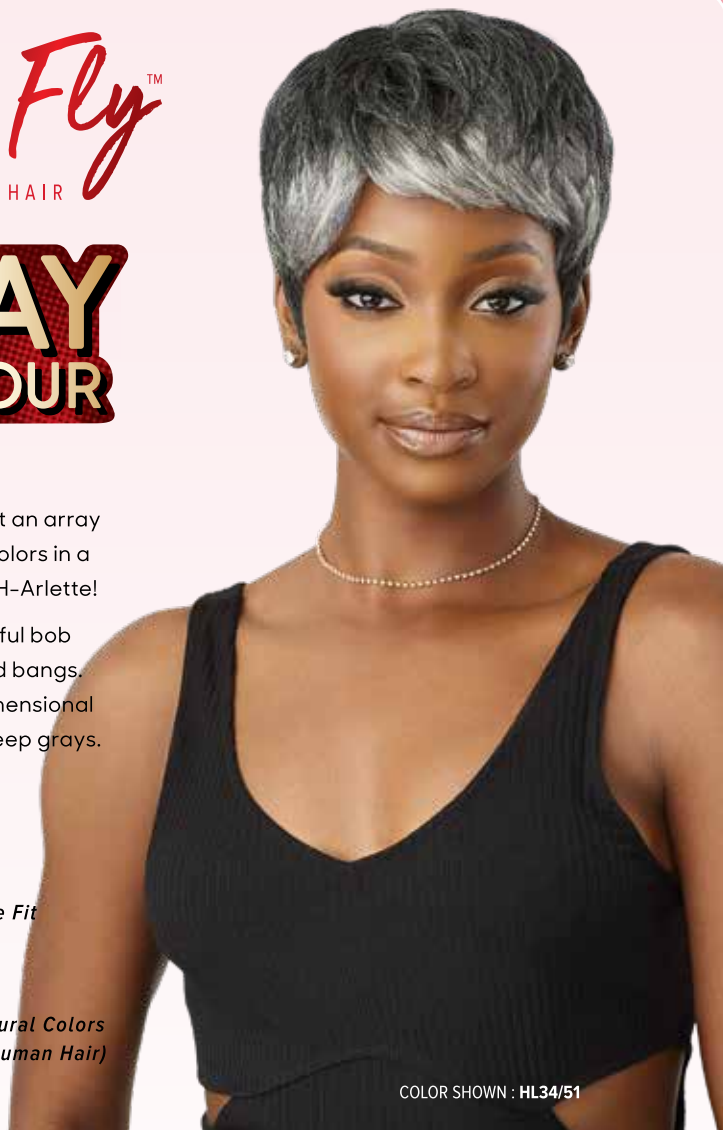
Fab & Fly™
100% HUMAN HAIR

**GRAY
GLAMOUR**

For women who want an array of human hair gray colors in a classy pixie — pick HH-Arlette!

HH-Randy is a beautiful bob with gray ringlets and bangs. Available in multi-dimensional light, medium, and deep grays.

- 100% Human Hair
- Breathable Mesh Cap
- Comfortable & Secure Fit
- Voluminous & Full
- Easy-to-Wear & Style
- Also Available in Natural Colors (100% Unprocessed Human Hair)



COLOR SHOWN : HL34/51



COLOR SHOWN : 51

Fab & Fly™
100% UNPROCESSED HUMAN HAIR

HH-Ceren is the new grab-n-go, holiday-party pixie! Featuring pre-curved layers and a bit of volume for an elegant look.

- 100% Unprocessed Human Hair
- Breathable Mesh Cap
- Comfortable & Secure Fit
- Voluminous & Full
- Easy-to-Wear & Style
- Bleach & Dye Friendly



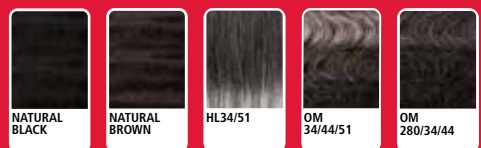
COLOR SHOWN : NATURAL BLACK

HH-ARLETTE



COLOR SHOWN : OM280/34/44, HL34/51 (LEFT TO RIGHT)

AVAILABLE COLORS
NATURAL BLACK, NATURAL BROWN,
HL34/51, OM34/44/51, OM280/34/44



HH-RANDY



COLOR SHOWN : 44, 51 (LEFT TO RIGHT)

AVAILABLE COLORS
NATURAL BLACK, NATURAL,
34, 44, 51, 280



HH-CEREN



COLOR SHOWN : NATURAL BLACK (LEFT TO RIGHT)

AVAILABLE COLORS
NATURAL BLACK,
NATURAL BROWN



✓ Bleach ✓ Dye ✓ Customize

Natural Brown is
bleach & dye friendly.

wigpop®

SYNTHETIC FULL WIG

Style
SELECTS



COLOR SHOWN : DARK VIOLET

Crisp, blunt-cut China bangs and loose curls make Kerana a knockout style. This naturally parted wig is available in Warm Apricot, Hot Pink, and more!

- Easy to Wear, Elevated Looks
- Special Styles: More curls, more textures, more length
- Ready to Wear & Go
- Heat-Styling Friendly

wigpop®

SYNTHETIC FULL WIG

Style
SELECTS

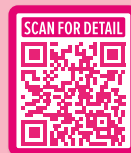


COLOR SHOWN : DR RED WINE

Meet Malina, a baby-doll-inspired look for the young and trendy.

- Easy to Wear, Elevated Looks
- Special Styles: More curls, more textures, more length
- Ready to Wear & Go
- Heat-Styling Friendly

KERANA 22"

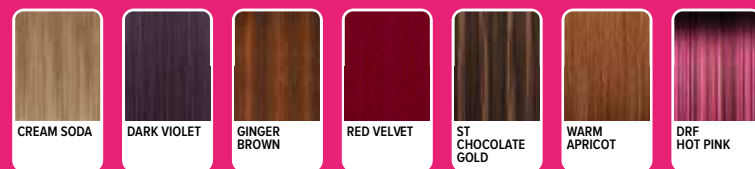


AVAILABLE COLORS

- 1, 1B, 2, CREAM SODA, DARK VIOLET, GINGER BROWN, RED VELVET, ST CHOCOLATE GOLD, WARM APRICOT, DRF HOT PINK



COLOR SHOWN : DRF HOT PINK, DARK VIOLET (LEFT TO RIGHT)



MALINA 18"



AVAILABLE COLORS

- 1, 1B, 2, CHOCOLATE SWIRL, CREAM SODA, DARK VIOLET, GINGER BROWN, WARM APRICOT, DR RED WINE, DR2/CREAMY TOFFEE



COLOR SHOWN : WARM APRICOT, DR RED WINE (LEFT TO RIGHT)



wigpop®

SYNTHETIC FULL WIG

Tandi's coils and tapered cut is a timeless look that's budget-friendly.

- Great Value
- Ready to Wear & Go
- Range of Trendy Colors & Styles
- Heat-Styling Friendly



COLOR SHOWN : DRAGON FRUIT

wigpop®

SYNTHETIC FULL WIG

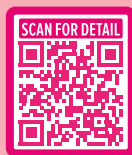
Hadia has it all - softly swept side bangs and pretty layers for texture!

- Great Value
- Ready to Wear & Go
- Range of Trendy Colors & Styles
- Heat-Styling Friendly



COLOR SHOWN : FROSTED ASH BLONDE

TANDI

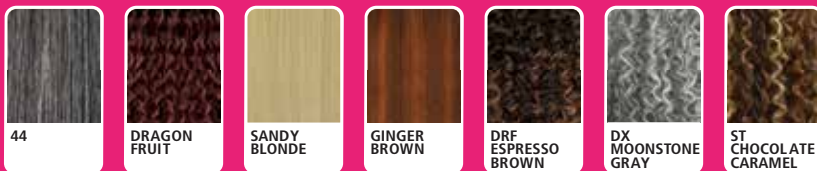


AVAILABLE COLORS

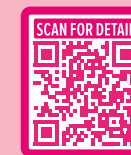
- 1, 1B, 2, 44,
 DRAGON FRUIT,
 SANDY BLONDE,
 GINGER BROWN,
 DRF ESPRESSO BROWN,
 DX MOONSTONE GRAY,
 ST CHOCOLATE CARAMEL



COLOR SHOWN : 1B, DRAGON FRUIT (LEFT TO RIGHT)



HADIA

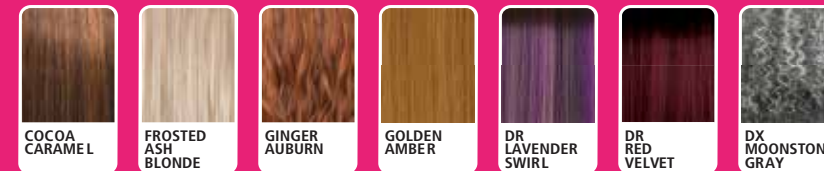


AVAILABLE COLORS

- 1, 1B, 2,
 COCOA CARAMEL,
 FROSTED ASH BLONDE,
 GINGER AUBURN,
 GOLDEN AMBER,
 DR LAVENDER SWIRL,
 DR RED VELVET,
 DX MOONSTONE GRAY



COLOR SHOWN : DR RED VELVET, FROSTED ASH BLONDE (LEFT TO RIGHT)

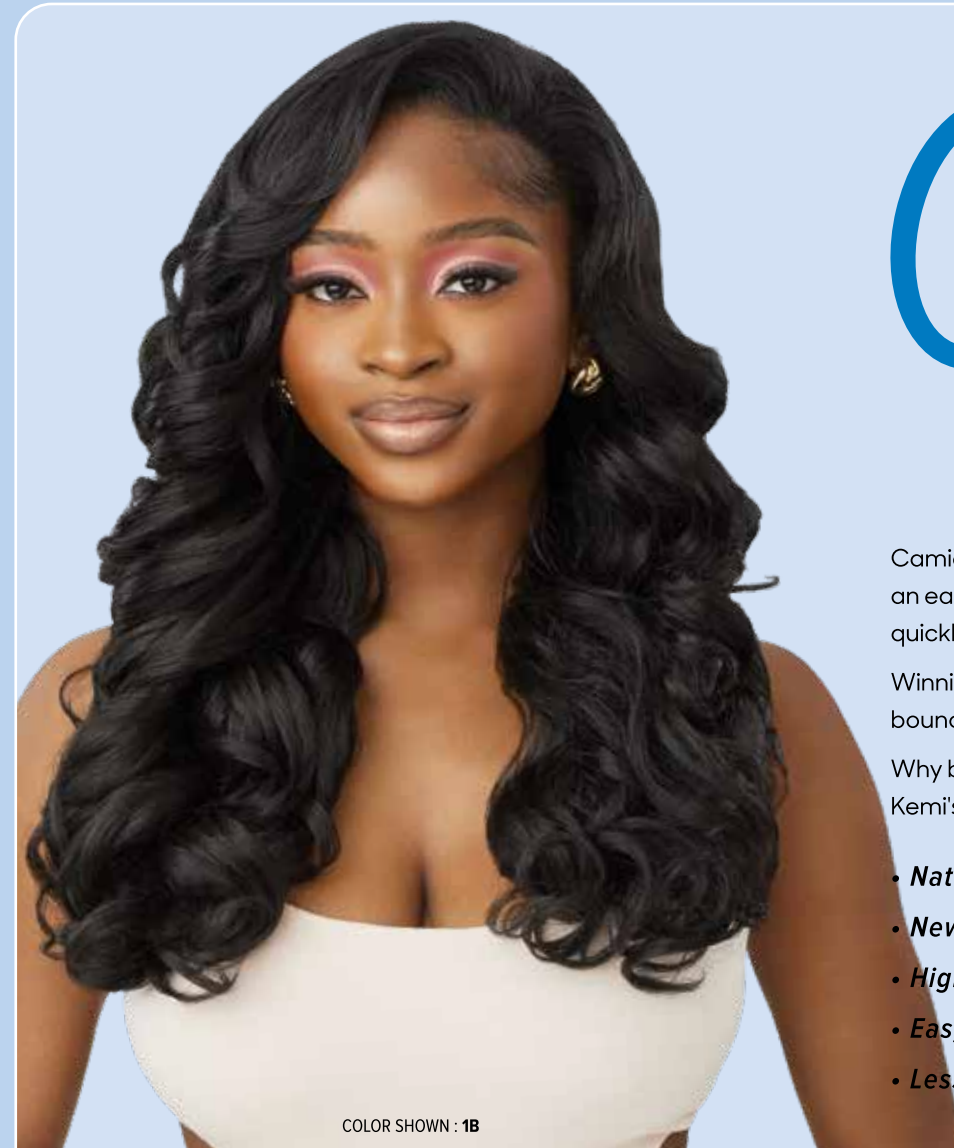




COLOR SHOWN : DR CHOCOLATE SWIRL



COLOR SHOWN : 1B



COLOR SHOWN : 1B

Quick WEAVE®

Camie is perfect for the days you wake up wanting an easy, natural look! Achieve coils, and fullness quickly with this half wig.

Winnie is an easy-to-blend bob featuring full, bouncy curls.

Why book a hairstylist when you can quickly blend Kemi's cascading curls yourself? Get the look fast!

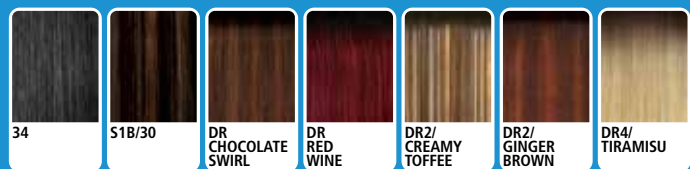
- Natural Texture & Volume
- New Cap Lays Flatter
- High Heat Resistant Fiber
- Easy-to-Wear Styles
- Less Leave Out Required

CAMIE 12"



COLOR SHOWN : 1B, DR CHOCOLATE SWIRL (LEFT TO RIGHT)

AVAILABLE COLORS
1, 1B, 2, 34, S1B/30, DR CHOCOLATE SWIRL, DR RED WINE, DR2/CREAMY TOFFEE, DR2/GINGER BROWN, DR4/TIRAMISU

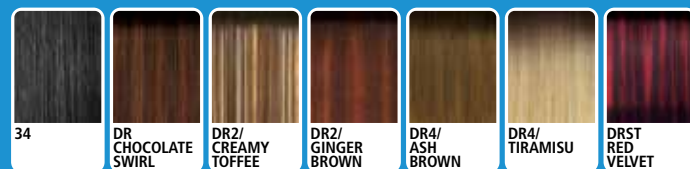


WINNIE 14"

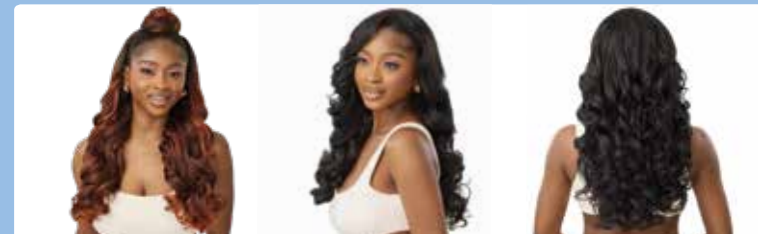


COLOR SHOWN : DRST RED VELVET, 1B (LEFT TO RIGHT)

AVAILABLE COLORS
1, 1B, 2, 34, DR CHOCOLATE SWIRL, DR2/CREAMY TOFFEE, DR2/GINGER BROWN, DR4/ASH BROWN, DR4/TIRAMISU, DRST RED VELVET

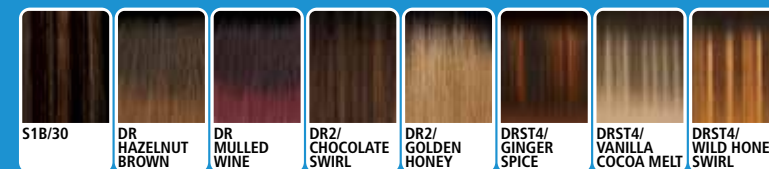


KEMI 22"



COLOR SHOWN : DRST4/GINGER SPICE, 1B (LEFT TO RIGHT)

AVAILABLE COLORS
1, 1B, 2, S1B/30, DR HAZELNUT BROWN, DR MULLED WINE, DR2/CHOCOLATE SWIRL, DR2/GOLDEN HONEY, DRST4/GINGER SPICE, DRST4/VANILLA COCOA MELT, DRST4/WILD HONEY SWIRL



Pretty Quick™

PREMIUM SYNTHETIC FIBER

PONY

No time? No problem. Belisse's waves are a breeze to style.

- Natural Look & Soft Texture
- Quick & Easy Styling
- Lightweight Drawstring Construction
- Premium Synthetic Fiber



COLOR SHOWN : DR CHOCOLATE SWIRL

Pretty Quick™

PREMIUM SYNTHETIC FIBER

PONY

Pop on Dory and dash! This drawstring pony will make you look like a princess in a flash.

- Natural Look & Soft Texture
- Quick & Easy Styling
- Lightweight Drawstring Construction
- Premium Synthetic Fiber



COLOR SHOWN : DRST HONEY BROWN



AVAILABLE COLORS

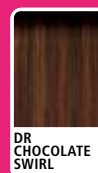
1, 1B, 2,

- DR CHOCOLATE SWIRL,
- DR2/GINGER BROWN,
- DR2/TIRAMISU,
- DRST HONEY BROWN,
- DRST RED VELVET

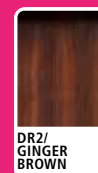
BELISSE 26"



COLOR SHOWN : 1B (LEFT TO RIGHT)



DR CHOCOLATE SWIRL



DR2/GINGER BROWN



DR2/TIRAMISU



DRST HONEY BROWN



DRST RED VELVET



DORY 16"



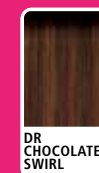
AVAILABLE COLORS

1, 1B, 2,

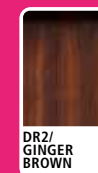
- DR CHOCOLATE SWIRL,
- DR2/GINGER BROWN,
- DR2/TIRAMISU,
- DRST HONEY BROWN,
- DRST RED VELVET



COLOR SHOWN : 1, DRST HONEY BROWN (LEFT TO RIGHT)



DR CHOCOLATE SWIRL



DR2/GINGER BROWN



DR2/TIRAMISU



DRST HONEY BROWN



DRST RED VELVET





Airtied
HUMAN HAIR BLEND
100% FULLY HAND-TIED WIG



LIGHTWEIGHT REDEFINED.
LACE REDESIGNED.





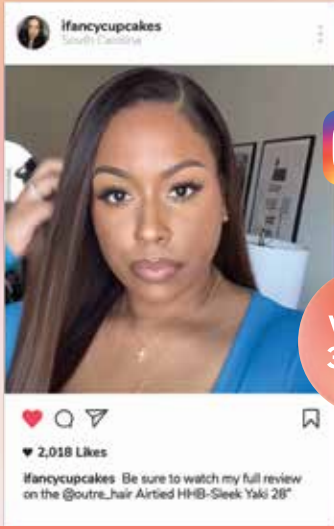

LIKES
789

VIEWS
22,000



LIKES
5,775

VIEWS
141,000



LIKES
2,018

VIEWS
37,300

HHB-NATURAL YAKI 12"

AVAILABLE COLORS
1, 1B, 2, CHOCOLATE SWIRL, NATURAL HONEY, DR2/CREAMY TOFFEE, DR4/CALIFORNIA BLONDE, DRF CHERRY WINE, DRFF2/GINGER BROWN, DRST HONEY BROWN

HHB-DOMINICAN CURLY 22"

AVAILABLE COLORS
1, 1B, 2, DR CHERRY CRUSH, DR4/TIRAMISU, DRST2/CHOCOLATE CARAMEL, DRST MAPLE BROWN, DRF GINGER BROWN, DRFF4/GOLDEN SWIRL

HHB-SLEEK YAKI 28"


AVAILABLE COLORS
1, 1B, 2, DR4/TIRAMISU, DRST2/CHOCOLATE CARAMEL, DRST MAPLE BROWN, DRF CHERRY WINE, DRF GINGER BROWN, DRFF4/GOLDEN SWIRL




WHAT
Holiday
SHOPPERS are
WATCHING

Many holiday hair purchases start with online discovery! Here's a snapshot of social media content customers have seen, liked, saved, and shared.








SWIRLISTA
LACE FRONT WIG




PRETTY GIRLS SWIRL



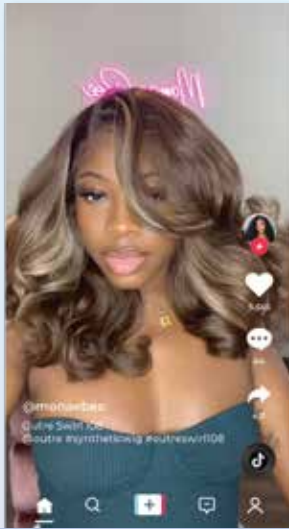
LIKES
933

VIEWS
31,900



LIKES
3,872

VIEWS
48,200



LIKES
5,565

VIEWS
50,100

SWIRL 101


AVAILABLE COLORS
1, 1B, 2, SPICED COGNAC, FROSTED ASH BLONDE, GINGER AUBURN, SANDY BLONDE, DR2/CHOCOLATE SWIRL, DR2/HONEY BROWN, DRFF2/RUBY ROSE, DRFF2/VANILLA MOCHA, DRST6/VANILLA TART

SWIRL 102


AVAILABLE COLORS
1, 1B, 2, SPICED COGNAC, FROSTED ASH BLONDE, GINGER AUBURN, SANDY BLONDE, DR2/CHOCOLATE SWIRL, DR2/HONEY BROWN, DRFF2/RUBY ROSE, DRFF2/VANILLA MOCHA, DRST6/VANILLA TART

SWIRL 108



AVAILABLE COLORS
1, 1B, 2, COCOA CARAMEL, FROSTED ASH BLONDE, GOLDEN AMBER, SPICED COGNAC, DR2/HONEY BROWN, DRFF2/RUBY ROSE, DRFF2/VANILLA MOCHA, DRST6/VANILLA TART




Swoop
SERIES
LACE FRONTAL WIG



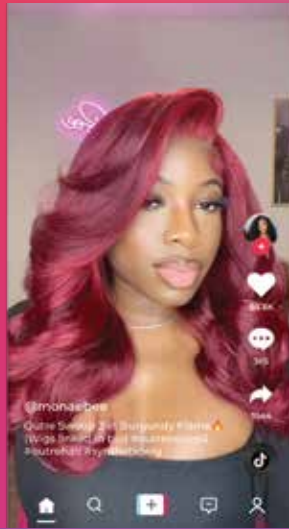
SLICK SWOOP DEFINE



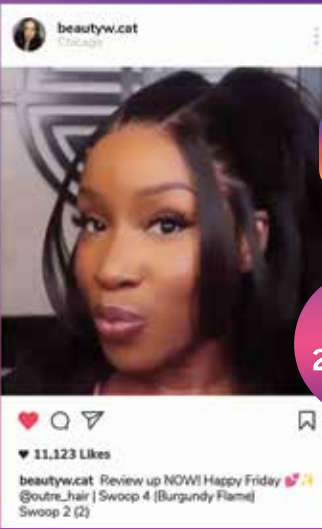
LIKES
5,381

VIEWS
59,700



LIKES
84,600

VIEWS
670,400



LIKES
11,123

VIEWS
211,000

SWOOP 1

AVAILABLE COLORS
1, 1B, 2, BURGUNDY FLAME, BUTTERSCOTCH BLONDE, GINGER SPICE, HAZELNUT HONEY, SWEDISH BLONDE, SWISS BROWN, DRFF AMBER SUNSET, DRFF CARAMEL MOCHA

SWOOP 2

AVAILABLE COLORS
1, 1B, 2, BURGUNDY FLAME, BUTTERSCOTCH BLONDE, GINGER SPICE, HAZELNUT HONEY, SWEDISH BLONDE, SWISS BROWN, DRFF AMBER SUNSET, DRFF CARAMEL MOCHA

SWOOP 4

AVAILABLE COLORS
1, 1B, 2, BURGUNDY FLAME, BUTTERSCOTCH BLONDE, GINGER SPICE, HAZELNUT HONEY, SWEDISH BLONDE, SWISS BROWN, DRFF AMBER SUNSET, DRFF CARAMEL MOCHA

mylk™

100% REMI HUMAN HAIR

Remi

HEALTHY HAIR IS A HOLIDAY MUST-HAVE

NATURAL PERM YAKI

4" x 4" HD LACE CLOSURE



MYLK YAKI



MYLK YAKI

AVAILABLE COLORS :

8" : 1, 1B, 2, 27, 30, 33, 350, 4, 425, 950, BURGUNDY
10", 12", 14" : 1, 130S, 1B, 2, 27, 30, 33, 350, 4, 425, 613, 950, BURGUNDY, C1B/30, C1B/33, C4/27, C4/30, T1B/27, T1B/30, T1B/425, T1B/BURGUNDY, T1B/RED

16", 18" : 1, 130S, 1B, 2, 27, 30, 33, 350, 4, 425, 613, 950, BURGUNDY

20", 22" : 1, 1B, 2, 4

MYLK PERM YAKI

AVAILABLE LENGTHS : 10", 12", 14"

AVAILABLE COLORS : 1, 1B, 2, 4

MYLK CLOSURE

AVAILABLE LENGTHS : 10", 12", 14"

AVAILABLE COLORS : 1, 1B, 2

STYLE & COLOR SHOWN: MYLK YAKI 18" 1B



BONE STRAIGHT | DOUBLE DRAWN

VELVET Lush™

REMY

100% REMY HUMAN HAIR

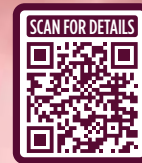
VELVET LUSH

THIS THANKSGIVING, SERVE FULL, LUSH LOOKS



MULTIPLE WASHES & WEARS

WORRY-FREE WASHING	AFTER WASHING	
	<ul style="list-style-type: none"> • MULTIPLE WEARS • MULTIPLE WASHES • MADE TO LAST 	<ul style="list-style-type: none"> • NOT WASH & RE-WEAR FRIENDLY • FRIZZY, DRY & HARD TO DETANGLE



AVAILABLE COLORS : 1, 1B, 2 AVAILABLE LENGTHS : 10", 12", 14", 16", 18", 20", 22", 24"

STYLE & COLOR SHOWN : VELVET LUSH _ 1



Remy

Sugar Punch™

100% UNPROCESSED REMY HUMAN HAIR

DOUBLE DRAWN
FOR FULL, THICK ENDS
SMOOTH, RESILIENT STRANDS



BOHEMIAN
NATURAL



W&W GYPSY DEEP
NATURAL BLACK



W&W SPANISH CURL
NATURAL



BODY
NATURAL BLACK



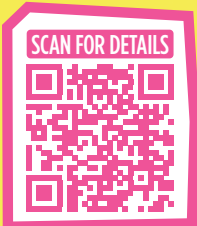
STRAIGHT
NATURAL



OCEAN
NATURAL



DEEP
NATURAL BLACK



SINGLE PACK

AVAILABLE STYLES : STRAIGHT, BODY, BOHEMIAN, DEEP, OCEAN
AVAILABLE COLORS : NATURAL BLACK, NATURAL
AVAILABLE LENGTHS : 10", 12", 14", 16", 18", 20", 22", 24"

MULTI PACK 3PCS

AVAILABLE STYLES : STRAIGHT, BODY
AVAILABLE COLORS : NATURAL BLACK, NATURAL
AVAILABLE LENGTHS : 10", 12", 14" / 12", 14", 16" / 14", 16", 18" / 16", 18", 20"
18", 20", 22" / 20", 22", 24" / 22", 24", 26" / 26", 28", 30"

WET & WAVY MULTI PACK 3PCS

AVAILABLE STYLES : W&W GYPSY DEEP, W&W SPANISH CURL
AVAILABLE COLORS : NATURAL BLACK, NATURAL
AVAILABLE LENGTHS : 10", 12", 14" / 14", 16", 18" / 18", 20", 22" / 22", 24", 26" / 26", 28", 30"

LACE CLOSURE

AVAILABLE STYLES :
4"x4" : STRAIGHT, BODY, BOHEMIAN, DEEP, OCEAN / 13"x4" : STRAIGHT, BODY
AVAILABLE COLORS : NATURAL BLACK, NATURAL
AVAILABLE LENGTHS : 10", 12", 14"