

OCTOBER 2024

®

Outre

STYLE & COLOR SHOWN:

MELTED HAIRLINE | PRESLEY | FF 1B/DIPPED BLONDE (LEFT)
COLORBOMB | HONOR | DRFF 1B/ATOMIC BLUE (RIGHT)



Styles to Haunt and Flaunt



Outre
85 Oxford Drive,
Moonachie, NJ 07074
USA

IN THIS ISSUE

Spooky, stylish, and versatile. Our wigs are the perfect accessory for Halloween parties and fall festivities. With a variety of cuts and special Halloween colors, you'll find the perfect wig to complete your costume.

100% UNPROCESSED HUMAN HAIR BULK // MYTRESSES GOLD LABEL PRE-STRETCHED HUMAN HAIR BULK

My TRESSES
100% UNPROCESSED HUMAN HAIR

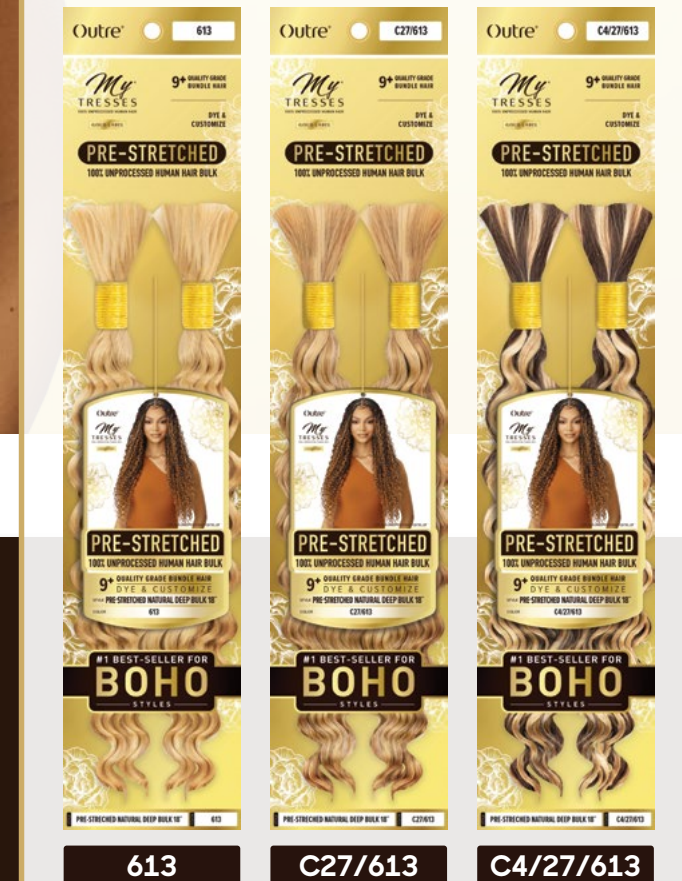
GOLD LABEL

BULK
PRE-STRETCHED
100% UNPROCESSED HUMAN HAIR BULK

Get 613 and blended 613 colors for blonde, wavy, braided looks without the bleaching and dyeing hassle.

- 100% Unprocessed Human Hair
- 9+ Quality Grade Bundle Hair
- Comfortable, Itch-Free Wear
- Pre-Stretched & Gentle on Fingers
- Soft on Skin & Lightweight
- Dye & Customize

NEW COLORS



NATURAL DEEP BULK 18"



AVAILABLE COLORS
NATURAL BLACK, NATURAL,
27, 30, 425, 613, 130S,
C27/613, C4/27/613, T1B/27,
T1B/30, T1B/425, COPPER ORANGE



My[®] TRESSES

PREMIUM 100% UNPROCESSED HUMAN HAIR

BLACK LABEL

13" x 4"

LACE FRONTAL WIG

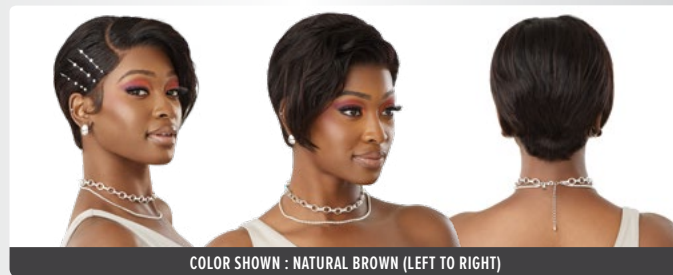
If you're looking for something sleek, slicked back, and sexy, then search no more. This human-hair pixie comes with a 13"x4" lace area that lets you pick your part and reveal your hairline.

- 100% Premium Unprocessed Human Hair
- Hand-Tied 13" x 4" Lace Frontal
- HD+ Transparent Lace
- Bleach/Dye/Customize
- Pre-Attached Elastic Band for Glueless Installs
- 3 Pre-Attached Combs for a Secure Fit



COLOR SHOWN : NATURAL BROWN

HH-NATURAL PIXIE



COLOR SHOWN : NATURAL BROWN (LEFT TO RIGHT)

AVAILABLE COLORS : NATURAL BLACK, NATURAL BROWN



COLOR SHOWN : WARM APRICOT

Airtied[™]

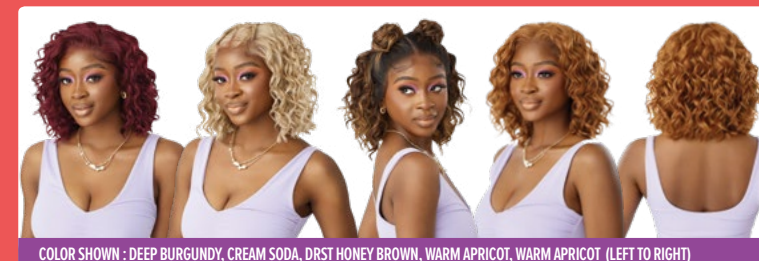
HUMAN HAIR BLEND

100% FULLY HAND-TIED WIG

Get curls and comfort with Airtied's new Loose Deep 12" bob featuring a breathable, lightweight, fully hand-tied cap.

- Human Hair Blend
- 100% Fully Hand-Tied with Vanish HD+ Lace Frontal
- Track-Free, Lightweight & Breathable Mesh Cap
- Thinner & More Flexible for a Seamless Melt
- Pre-Plucked Hairline with Smaller Knots
- Contoured Lace Hairline
- Pre-attached Elastic Band for a Glueless Install

HHB - LOOSE DEEP 12"



COLOR SHOWN : DEEP BURGUNDY, CREAM SODA, DRST HONEY BROWN, WARM APRICOT, WARM APRICOT (LEFT TO RIGHT)

AVAILABLE COLORS
1, 1B, 2, CHOCOLATE SWIRL, CREAM SODA, DEEP BURGUNDY, GINGER BROWN, WARM APRICOT, DR4/CALIFORNIA BLONDE, DRST HONEY BROWN



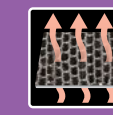
VANISH HD+ LACE



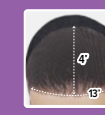
SOFT & THIN MASTERFUL MELT



GLUELESS ELASTIC BAND



BREATHABLE MESH CAP



13"X4" LACE AREA

PERFECT HAIRLINE
*Swoop*TM
SERIES
LACE FRONTAL WIG

The hot-selling Swoop Series has a new 24" style. Swoop 8 has soft, cascading curls in subtle and saucy color options.

PERFECTED HAND-TIED LACE PART, HAIRLINE & SIDEBURNS

- Fully Hand-Tied 13" x 4" Frontal
- Deeper, Wider, Ear-to-Ear Soft HD Lace
- Pre-Plucked with Precision
- Super Natural Shape and Density

EASY STYLING & SIMPLE INSTALLS

- More HD Lace Space to Swoop your Baby Hairs
- Pre-Styled Volume Lift at Lace Area
- Pre-Attached Wide Elastic Band for Glueless Installs
- Heat-Styling Friendly



COLOR SHOWN : 1B/DRFF SAPHIRE FROST

Lace Front
PERFECT HAIRLINETM

FULLY HAND-TIED 13"x6" LACE WIG

Your favorite hairstylist could never cut layers as beautiful as Laysha's! This unit has perfectly placed highlights paired with flattering layers.

- Fully Hand-Tied 13" x 6" Frontal
- Ear-to-Ear Soft HD Transparent Lace
- Natural Baby Hairs
- Comes With a Pre-Attached Elastic Band
- Fast, Easy & Effortless Glueless Installs
- Pre-Plucked Hairline
- Heat-Styling Friendly



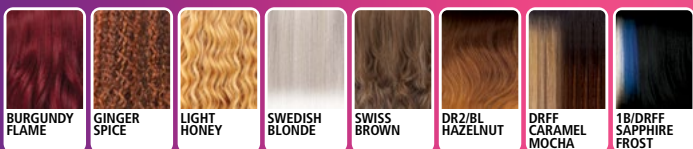
COLOR SHOWN : DRST PURPLE DREAM

SWOOP 8 24"

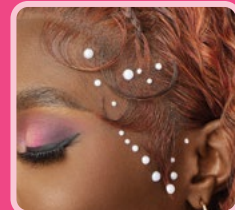


COLOR SHOWN : DRFF CARAMEL MOCHA, BURGUNDY FLAME, 1B/DRFF SAPHIRE FROST (LEFT TO RIGHT)

AVAILABLE COLORS
1, 1B, 2, BURGUNDY FLAME, GINGER SPICE, LIGHT HONEY, SWEDISH BLONDE, SWISS BROWN, DR2/BL HAZELNUT, DRFF CARAMEL MOCHA, 1B/DRFF SAPHIRE FROST



MORE LACE SPACE FOR SWOOPS



DEEPER, MORE HAND-TIED LACE AREA & BABY HAIRS STYLING SPACE

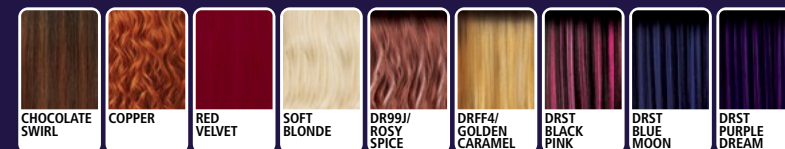


LAYSHA 20"



COLOR SHOWN : DRFF4/GOLDEN CARAMEL, DR99J/ROSY SPICE, DRST PURPLE DREAM, DRST PURPLE DREAM (LEFT TO RIGHT)

AVAILABLE COLORS
1, 1B, 2, CHOCOLATE SWIRL, COPPER, RED VELVET, SOFT BLONDE, DR99J/ROSY SPICE, DRFF4/GOLDEN CARAMEL, DRST BLACK PINK, DRST BLUE MOON, DRST PURPLE DREAM



13 X 6





COLOR SHOWN : ASH BROWN



COLOR SHOWN : TIRAMISU



COLOR SHOWN : GOLDEN AMBER

melted HAIRLINE®

LACE FRONT WIG

Kaymore was made for ladies who want ultra-long options! Wear this thigh-length look with Halloween costumes, at holiday parties, or on a night out.

They won't stop staring when you walk in wearing Lorenza! This attention-grabbing 40" style is as stunning as you are.

Take the layered look to the next level with Kass. This dramatic feathered look is a hot trend that won't cool down this fall and winter.

- Soft HD Transparent Lace
- 5" Deep Parting
- Completely Pre-Plucked Hairline & Sideburns
- Pre-Attached Wide Elastic Band for Secure Fit
- Fast, Easy & Effortless Glueless Installs
- Natural Baby Hairs
- Redesigned ComfortFit Ear Contour
- Heat Resistant Fiber

KAYMORE 42"



COLOR SHOWN : 1B, DRFF2/CINNAMON MOCHA, ASH BROWN (LEFT TO RIGHT)

AVAILABLE COLORS
1, 1B, 2,
ASH BROWN,
TIRAMISU,
DR RAGING RED,
DRFF2/CINNAMON MOCHA,
DRFF2/HONEY AMBER BROWN,
DRST4/GINGER SPICE,
DRST4/WILD HONEY SWIRL

LORENZA 40"



COLOR SHOWN : DRFF2/HONEY AMBER BROWN, DR RAGING RED, DRFF2/HONEY AMBER BROWN, DRFF2/HONEY AMBER BROWN (LEFT TO RIGHT)

AVAILABLE COLORS
1, 1B, 2,
ASH BROWN,
TIRAMISU,
DR RAGING RED,
DRFF2/CINNAMON MOCHA,
DRFF2/HONEY AMBER BROWN,
DRST4/GINGER SPICE,
DRST4/WILD HONEY SWIRL

KASS 22"



COLOR SHOWN : GOLDEN AMBER, BROWN COPPER SWIRL, SANDY BLONDE, SANDY BLONDE (LEFT TO RIGHT)

AVAILABLE COLORS

1, 1B, 2,
99J,
BLUE STEEL,
BROWN COPPER SWIRL,
GOLDEN AMBER,
SANDY BLONDE,
DR GINGER BROWN,
DR2/HAZELNUT BROWN,
DRST VAMPIRE RED,
DRST2/AUBURN HONEY





COLOR SHOWN : DRFF PLUM WINE



COLOR SHOWN : DR99J/ROSY SPICE



COLOR SHOWN : DRST4/PINK PLUM

melted HAIRLINE®

LACE FRONT WIG

With Adela, you can choose looks with or without bangs. This classy, mid-length style was made for women wanting a flawless hairline and various color + styling options!

The differences are subtle but significant! Wear Elara's soft, feathery layered look with or without bangs. Or get Ellington's trendy, teen-approved style with loose curls.

- Soft HD Transparent Lace
- 5" Deep Parting
- Completely Pre-Plucked Hairline & Sideburns
- Pre-Attached Wide Elastic Band for Secure Fit
- Fast, Easy & Effortless Glueless Installs
- Natural Baby Hairs
- Redesigned ComfortFit Ear Contour
- Heat Resistant Fiber

ADELA 20"



COLOR SHOWN : DR4/BLONDE LATTE MELT, DR HICKORY BROWN, DRFF PLUM WINE, DRFF PLUM WINE (LEFT TO RIGHT)

AVAILABLE COLORS
1, 1B, 2, GINGER, NATURAL HONEY, DR HICKORY BROWN, DR2/CREAMY TOFFEE, DR4/BLONDE LATTE MELT, DRFF PLUM WINE, DRST2/ROSE BROWN



ELARA 24"



COLOR SHOWN : DRFF4/UC AMBER SUNRISE, DRFF4/COCOA VANILLA SWIRL, DR99J/ROSY SPICE, DR99J/ROSY SPICE (LEFT TO RIGHT)

AVAILABLE COLORS
1, 1B, 2, CHOCOLATE SWIRL, RED VELVET, SOFT BLONDE, DR99J/ROSY SPICE, DRST BLUE MOON, DRST PURPLE DREAM, DRFF4/COCOA VANILLA SWIRL, DRFF4/UC AMBER SUNRISE, DRFF4/UC MAHOGANY FLAME



ELLINGTON 22"



COLOR SHOWN : DRFF4/UC AUBURN BLONDE, DRST BLUE MOON, DRST4/PINK PLUM, DRST4/PINK PLUM (LEFT TO RIGHT)

AVAILABLE COLORS
1, 1B, 2, CHOCOLATE SWIRL, RED VELVET, SOFT BLONDE, DRST BLUE MOON, DRST4/PINK PLUM, DRFF4/COCOA VANILLA SWIRL, DRFF4/UC AUBURN BLONDE, DRFF4/UC MAHOGANY FLAME



Lace front
LACE FRONT WIG



Give your next look some punch with Eastlyn and Kadacia. These wigs have softly brushed-out waves with the perfect pop of vibrant, fall-friendly shades.



COLOR SHOWN : 2/JADE KISS



COLOR SHOWN : OCEAN BLUE

- HD Transparent Lace
- Pre-Plucked Parting
- Breathable, Comfortable Cap
- Natural Baby Hairs
- Fast, Easy & Effortless Glueless Installs
- Heat Resistant Fiber
- Pre-attached Wide Elastic Band for a Secure Fit

EASTLYN 16"



COLOR SHOWN : PAPRIKA SPICE, 2/JADE KISS (LEFT TO RIGHT)

AVAILABLE COLORS

- 1, 1B, 2,
PAPRIKA SPICE,
ROUGE PINK,
SOFT BLONDE,
2/JADE KISS,
2/RED KISS,
4/SAPPHIRE KISS,
DRFF4/GINGER COPPER,
DRST CHOCOLATE SWIRL



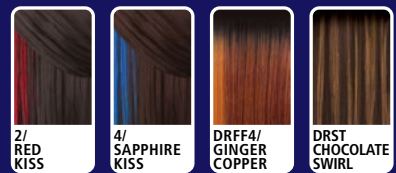
KADACIA 22"



COLOR SHOWN : LILAC BLOSSOM, OCEAN BLUE (LEFT TO RIGHT)

AVAILABLE COLORS

- 1, 1B, 2,
CINNAMON BROWN,
LILAC BLOSSOM,
OCEAN BLUE,
ROUGE PINK,
SOFT BLONDE,
DR RED VELVET,
DR4/CHOCOLATE GOLD,
DR4/FROSTED ASH BROWN,
LR8/HONEY ASH BLONDE



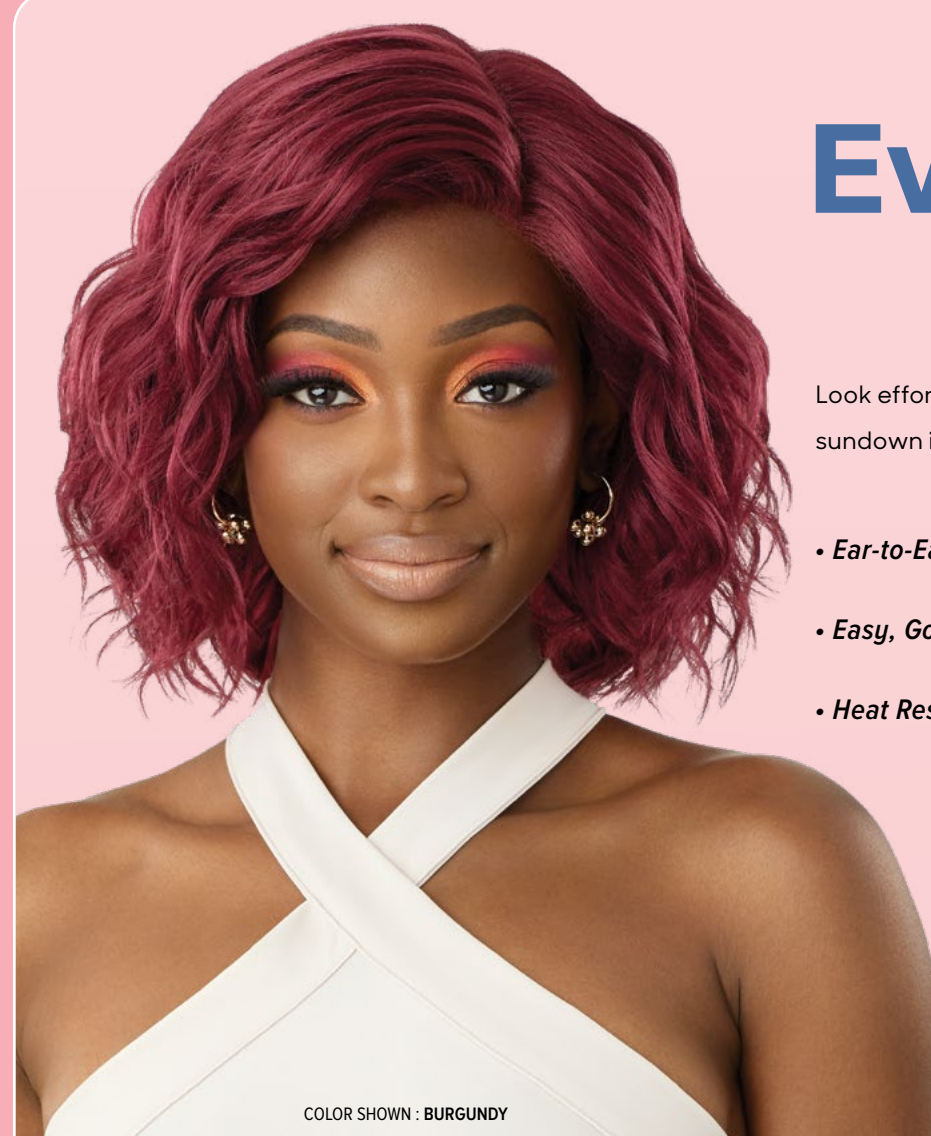
NATURAL BABY HAIRS

EveryWearTM

LACE FRONT WIG

Look effortlessly stylish on a budget from sunup to sundown in Every43's cool, tousled waves.

- Ear-to-Ear HD Lace
- Easy, Goes-with-Everything Style
- Heat Resistant Fiber



COLOR SHOWN : BURGUNDY

EVERY43 12"



COLOR SHOWN : SANDY BLONDE, BURGUNDY, BURGUNDY (LEFT TO RIGHT)

- AVAILABLE COLORS
1, 1B, 2, BURGUNDY, GINGER AUBURN, SANDY BLONDE, DR2/CHOCOLATE SWIRL,
DR2/SUNSET COPPER, DRST VAMPIRE RED, DRST2/CHOCOLATE CARAMEL





LACE PART
— WITH —
BANG STYLE



COLOR SHOWN : DR MIDNIGHT PURPLE

Eloise is a waist-long wig with a twist!
We've elevated this wig with pre-cut bangs
by adding a lace part for an ultra-realistic look!

- Premium Synthetic Fibers
- Pre-Plucked & Hand-Tied Lace I-Part
- Pre-Attached Wide Elastic Band for a Secure Fit
- Breathable Mesh Cap
- Heat-Styling Friendly

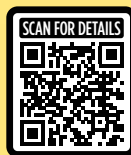


COLOR SHOWN : 2T/SANGRIA

Aldina has everything you want in an easy,
stylish wig: a glueless fit, natural lace part,
and long butterfly layers.

- Premium Synthetic Fibers
- Pre-Plucked & Hand-Tied Lace I-Part
- Pre-Attached Wide Elastic Band for a Secure Fit
- Breathable Mesh Cap
- Heat-Styling Friendly

ELOISE 28"



COLOR SHOWN : CHAMPAGNE BLONDE, DR MIDNIGHT PURPLE, DR MIDNIGHT PURPLE (LEFT TO RIGHT)

AVAILABLE COLORS

- 1, 1B, 2, BURGUNDY,
- CHAMPAGNE BLONDE, DEEP AUBURN,
- DR MIDNIGHT PURPLE,
- DR HONEY AUBURN, DR4/ROSE GOLD,
- DR2/CHOCOLATE SWIRL,
- DRST VAMPIRE RED



ALDINA 24"



COLOR SHOWN : HAVANA BROWN, 2T/SANGRIA, 2T/SANGRIA (LEFT TO RIGHT)

AVAILABLE COLORS

- 1, 1B, 2, 2T/SANGRIA, ASH BROWN,
- COSMO RED, GOLDEN AMBER,
- HAVANA BROWN, TIRAMISU,
- DR BROWN SUGAR SWIRL,
- DR4/BL SOFT BLONDE,
- DRST4/GINGER SPICE



premium DUBY[®] WIG

100% HUMAN HAIR

The star of HH-Allen is its side-swept bangs and 100% human hair that comes in various color options.

- 100% Premium Human Hair
- A Variety of Classic Styles and Color Options
- Affordable
- Durable and Long Lasting



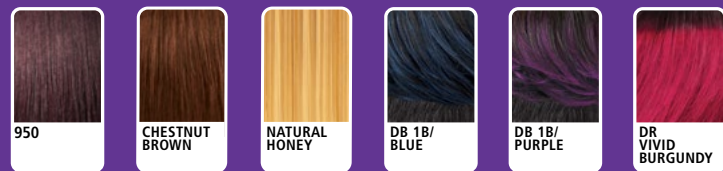
COLOR SHOWN : NATURAL HONEY

HH-ALLEN



COLOR SHOWN : 950, NATURAL HONEY, NATURAL HONEY (LEFT TO RIGHT)

AVAILABLE COLORS
1, 1B, 2, 950,
CHESTNUT BROWN,
NATURAL HONEY,
DB 1B/BLUE,
DB 1B/PURPLE,
DR VIVID BURGUNDY



Fab & Fly[™] GRAY GLAMOUR

100% HUMAN HAIR



COLOR SHOWN : HL34/51

For women who want an array of human hair gray colors in a classy pixie — pick HH-Arlette!

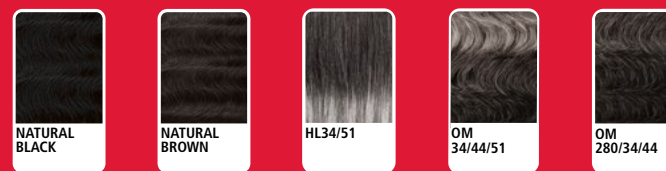
- 100% Human Hair
- Breathable Mesh Cap
- Comfortable & Secure Fit
- Voluminous & Full
- Easy-to-Wear & Style
- Also Available in Natural Colors (100% Unprocessed Human Hair)

HH-ARLETTE



COLOR SHOWN : OM280/34/44, HL34/51, HL34/51 (LEFT TO RIGHT)

AVAILABLE COLORS
NATURAL BLACK,
NATURAL BROWN,
HL34/51,
OM33/44/51,
OM280/34/44



Natural Brown is bleach & dye friendly.

wigpop®

SYNTHETIC FULL WIG

Wigpop's new styles won't stop coming in! Stand out in the short French bobs, Emma and Essy, or Tandi's coily, tapered look.

- Great Value
- Ready to Wear & Go
- Range of Trendy Colors & Styles
- Heat-Styling Friendly



COLOR SHOWN : CHOCOLATE SWIRL



COLOR SHOWN : DR MULBERRY



COLOR SHOWN : DRAGON FRUIT



COLOR SHOWN : GINGER AUBURN

wigpop®

SYNTHETIC FULL WIG

Style SELECTS

Nafessa is your new favorite fall wig with texture! She has large, loose curls with a crescent bang in colors like ginger auburn, golden amber, burgundy, and more.

- Easy to Wear, Elevated Looks
- Special Styles: More curls, more textures, more length
- Ready to Wear & Go
- Heat-Styling Friendly

EMMA 10"



COLOR SHOWN : DR99J/ROSY SPICE, CHOCOLATE SWIRL, CHOCOLATES SWIRL (LEFT TO RIGHT)

AVAILABLE COLORS

1, 1B, 2, CHOCOLATE SWIRL, HAVANA BROWN, MIDNIGHT BLUE, SOFT BLONDE, SOFT GINGER, DR MULBERRY, DR99J/ROSY SPICE

ESSY 10"



COLOR SHOWN : SOFT GINGER, DR MULBERRY, DR MULBERRY (LEFT TO RIGHT)

AVAILABLE COLORS

1, 1B, 2, CHOCOLATE SWIRL, HAVANA BROWN, MIDNIGHT BLUE, SOFT BLONDE, SOFT GINGER, DR MULBERRY, DR99J/ROSY SPICE

TANDI



COLOR SHOWN : 1B, DRAGON FRUIT, DRAGON FRUIT (LEFT TO RIGHT)

AVAILABLE COLORS

1, 1B, 2, 44, DRAGON FRUIT, SANDY BLONDE, GINGER BROWN, DRF ESPRESSO BROWN, DX MOONSTONE GRAY, ST CHOCOLATE CARAMEL

NAFESSA 22"



COLOR SHOWN : 1B, GINGER AUBURN, GINGER AUBURN (LEFT TO RIGHT)

AVAILABLE COLORS

1, 1B, 2, 34, ASH BROWN MELT, BURGUNDY, GINGER AUBURN, GOLDEN AMBER, GOLDEN HONEY BLONDE, DR2/HAZELNUT BROWN, DR2/VANILLA COCOA



converti-cap®

PREMIUM SYNTHETIC FIBERS

How many styles can you create with Mermaid's Kiss's waves? Remix it to create a style that fits your daily mood.

Your styling wish has come true with the new Blush & Bloom Converti-Cap! This sophisticated style looks good on everyone, blends well, and can be worn in multiple ways.

- Limitless styling possibilities
- Reveal your own hairline for a realistic look
- Breathable and flexible cap that lays flat
- Adjustable drawstring for a custom fit
- Premium Synthetic Fibers
- Bacteria-Resistant Cap

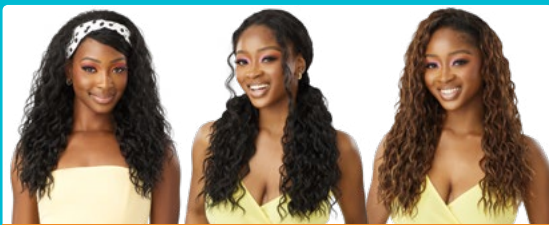


COLOR SHOWN : 1B



COLOR SHOWN : 1B

MERMAID'S KISS 22"



COLOR SHOWN : 1B, 1B, DR2/CHOCOLATE SWIRL (LEFT TO RIGHT)



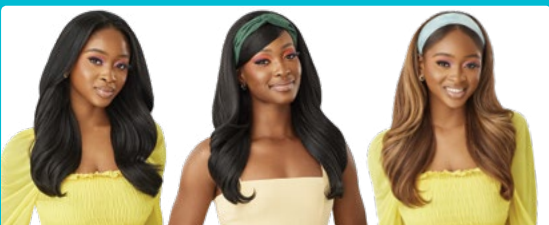
COLOR SHOWN : DR2/CHOCOLATE SWIRL (LEFT TO RIGHT)

AVAILABLE COLORS

1, 1B, 2, S1B/30, DR GINGER BROWN, DR HAZELNUT BROWN, DR HONEY BROWN, DR MULLED WINE, DR2/CHOCOLATE SWIRL, DR2/GOLDEN HONEY



BLUSH & BLOOM 24"



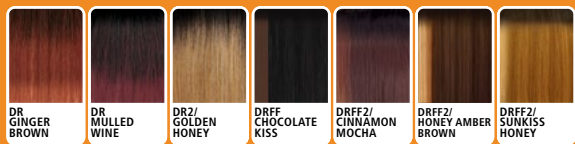
COLOR SHOWN : 1B, 1B, DRFF2/HONEY AMBER BROWN (LEFT TO RIGHT)



COLOR SHOWN : DRFF2/HONEY AMBER BROWN, 1B, 1B (LEFT TO RIGHT)

AVAILABLE COLORS

1, 1B, 2, DR GINGER BROWN, DR MULLED WINE, DR2/GOLDEN HONEY, DRFF CHOCOLATE KISS, DRFF2/CINNAMON MOCHA, DRFF2/HONEY AMBER BROWN, DRFF2/SUNKISS HONEY



Pretty Quick™

PREMIUM SYNTHETIC FIBER

WRAP PONY

Your go-to, grab-n-go holiday look is here! The new Water Wave 28" wrap pony creates a sleek, salon-quality ponytail in minutes!

- Made with Premium Synthetic Fiber
- Great for High & Low Ponytails
- Salon Style Wrap Ponytail
- Bulk-Free Ponytail Base
- Quick and Easy Styling
- Lightweight
- Soft Feel & Natural Luster



COLOR SHOWN : DR2/CHOCOLATE SWIRL

COLOR SHOWN : 1B

WATER WAVE 28"



AVAILABLE COLORS

1, 1B, 2, DR GINGER BROWN, DR HAZELNUT BROWN, DR HONEY BROWN, DR MULLED WINE, DR2/CHOCOLATE SWIRL, DR2/GOLDEN HONEY





WET & WAVY

COLOR SHOWN : NATURAL BLACK

W&W GYPSY DEEP

MULTI PACK

AVAILABLE COLOR
NATURAL BLACK, NATURAL



WET & WAVY

COLOR SHOWN : NATURAL

W&W SPANISH CURL

MULTI PACK

AVAILABLE COLOR
NATURAL BLACK, NATURAL



COLOR SHOWN : NATURAL

STRAIGHT

SINGLE PACK, MULTI PACK,
4"X4" & 13"X4" CLOSURE
AVAILABLE COLOR
NATURAL BLACK, NATURAL

Sugar Punch™

100% UNPROCESSED REMY HUMAN HAIR

DOUBLE DRAWN
FOR FULL, THICK ENDS
Smooth, Resilient STRANDS

KEY FEATURES

- 100% Unprocessed Remy Human Hair
- HD Transparent Lace Closure Options
- Pre-Plucked Hairline & Natural-Looking Baby Hair
- Double Drawn Process with Cuticle Retained Strands
- Thick, Lush, Tangle-Free Ends
- Smooth, Resilient Hair & Long-Lasting Bundles
- One Directional Strands for More Tangle Resistance
- Bleach / Dye / Customize
- No Shedding

SINGLE PACK



STRAIGHT BODY DEEP OCEAN BOHEMIAN

AVAILABLE LENGTHS :
10", 12", 14", 16", 18", 20", 22", 24"

AVAILABLE COLORS :
NATURAL BLACK, NATURAL

MULTI PACK



STRAIGHT BODY

AVAILABLE LENGTHS :
10", 12", 14" / 12", 14", 16" / 14", 16", 18" / 16", 18", 20" / 18", 20", 22" / 20", 22", 24" / 22", 24", 26" / 26", 28", 30"

AVAILABLE COLORS :
NATURAL BLACK, NATURAL

MULTI PACK

WET & WAVY



W&W GYPSY DEEP W&W SPANISH CURL

AVAILABLE LENGTHS :
10", 12", 14" / 14", 16", 18" / 18", 20", 22" / 22", 24", 26" / 26", 28", 30"

AVAILABLE COLORS :
NATURAL BLACK, NATURAL



COLOR SHOWN : NATURAL BLACK

BODY

SINGLE PACK, MULTI PACK,
4"X4" & 13"X4" CLOSURE
AVAILABLE COLOR
NATURAL BLACK, NATURAL



COLOR SHOWN : NATURAL

OCEAN

SINGLE PACK, 4"X4" CLOSURE
AVAILABLE COLOR
NATURAL BLACK, NATURAL



COLOR SHOWN : NATURAL

BOHEMIAN

SINGLE PACK, 4"X4" CLOSURE
AVAILABLE COLOR
NATURAL BLACK, NATURAL



COLOR SHOWN : NATURAL BLACK

DEEP

SINGLE PACK, 4"X4" CLOSURE
AVAILABLE COLOR
NATURAL BLACK, NATURAL

4"X4" LACE CLOSURE



STRAIGHT BODY DEEP OCEAN BOHEMIAN

AVAILABLE LENGTHS : 10", 12", 14" | AVAILABLE COLORS : NATURAL BLACK, NATURAL

13"X4" LACE FRONTAL



STRAIGHT BODY



COLOR SHOWN : NATURAL BROWN

HH-ALARA

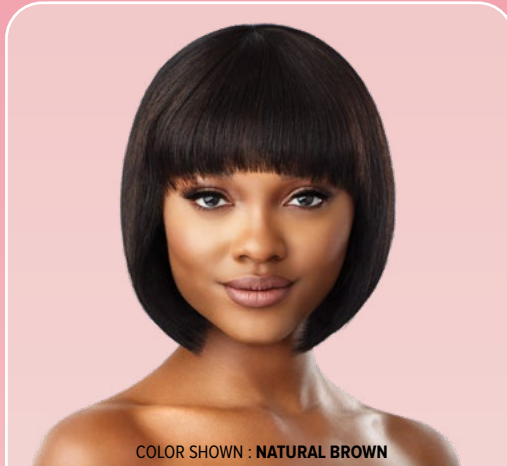
AVAILABLE COLORS
NATURAL BLACK, NATURAL BROWN



COLOR SHOWN : NATURAL BROWN

HH-BLOOM

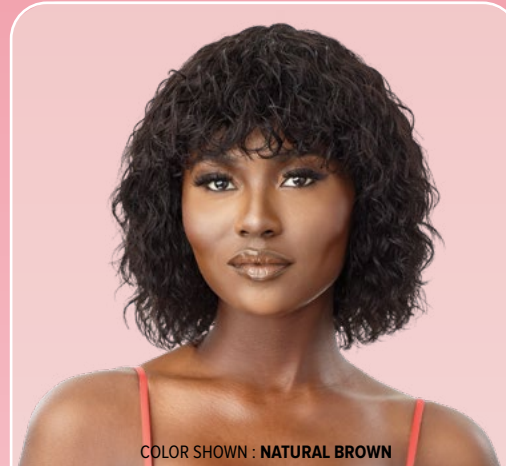
AVAILABLE COLORS
NATURAL BLACK, NATURAL BROWN



COLOR SHOWN : NATURAL BROWN

HH-BLOSSOM

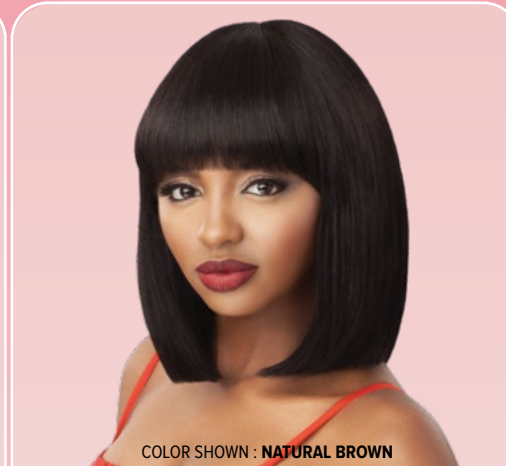
AVAILABLE COLORS
NATURAL BLACK, NATURAL BROWN



COLOR SHOWN : NATURAL BROWN

HH-MAYSIE

AVAILABLE COLORS
NATURAL BLACK, NATURAL BROWN



COLOR SHOWN : NATURAL BROWN

HH-MISTY

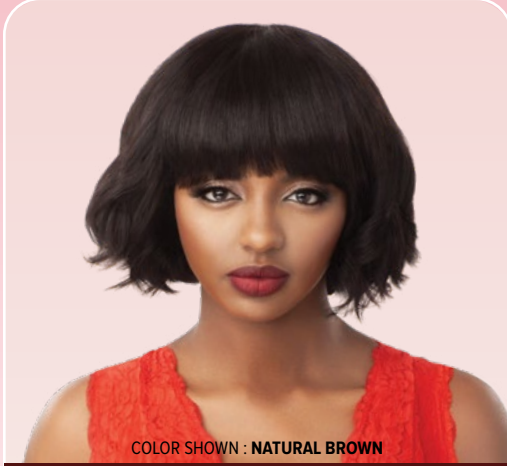
AVAILABLE COLORS
NATURAL BLACK, NATURAL BROWN



COLOR SHOWN : NATURAL BROWN

HH-CLOVER

AVAILABLE COLORS
NATURAL BLACK, NATURAL BROWN



COLOR SHOWN : NATURAL BROWN

HH-EVELYN

AVAILABLE COLORS
NATURAL BLACK, NATURAL BROWN



COLOR SHOWN : NATURAL BROWN

HH-JUDE

AVAILABLE COLORS
NATURAL BLACK, NATURAL BROWN



COLOR SHOWN : NATURAL BROWN

HH-RIRI

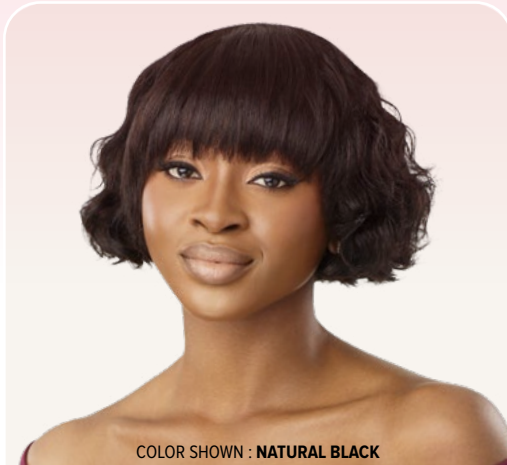
AVAILABLE COLORS
NATURAL BLACK, NATURAL BROWN



COLOR SHOWN : NATURAL BROWN

HH-TULIA

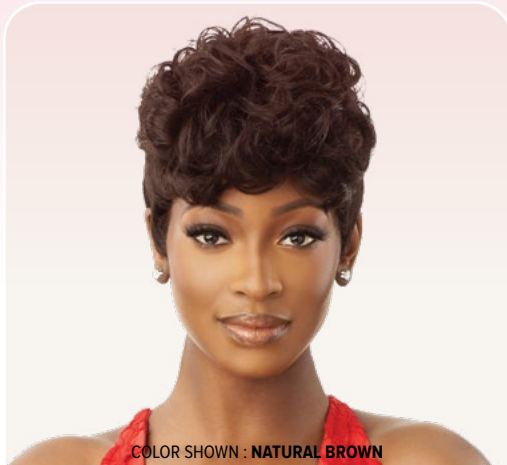
AVAILABLE COLORS
NATURAL BLACK, NATURAL BROWN



COLOR SHOWN : NATURAL BLACK

HH-LAVINA

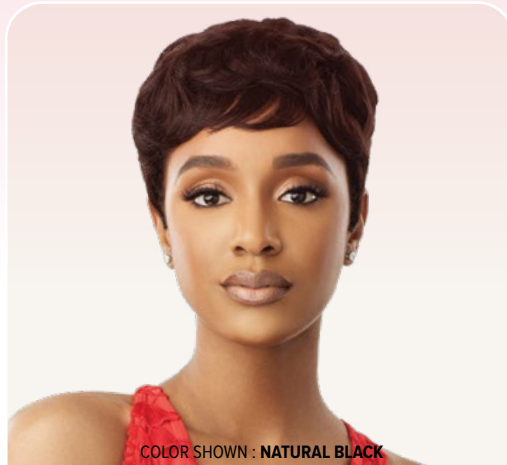
AVAILABLE COLORS
NATURAL BLACK, NATURAL BROWN



COLOR SHOWN : NATURAL BROWN

HH-LYRA

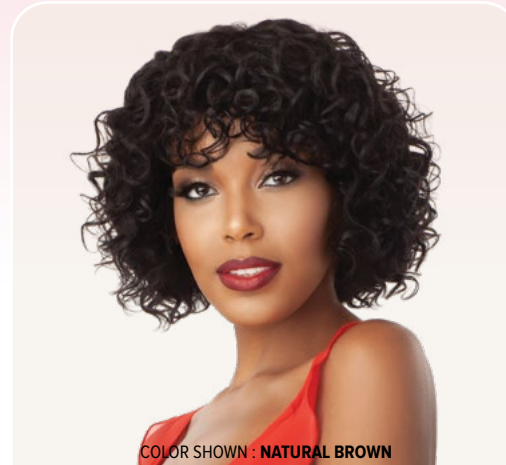
AVAILABLE COLORS
NATURAL BLACK, NATURAL BROWN



COLOR SHOWN : NATURAL BLACK

HH-MABEL

AVAILABLE COLORS
NATURAL BLACK, NATURAL BROWN



COLOR SHOWN : NATURAL BROWN

HH-VENUS

AVAILABLE COLORS
NATURAL BLACK, NATURAL BROWN



COLOR SHOWN : NATURAL BROWN

HH-VIVIA

AVAILABLE COLORS
NATURAL BLACK, NATURAL BROWN

Fab & Fly™

100% UNPROCESSED HUMAN HAIR

Never settle for less than fab! Your hair should be as fabulous and versatile as you are. With a range of 100% Unprocessed Human Hair wigs in customizable styles, this collection gives you endless looks to make your own on the fly.

- 100% Unprocessed Human Hair
- Breathable Mesh Cap
- Comfortable & Secure Fit
- Voluminous & Full
- Easy-to-Wear & Style
- Bleach & Dye Friendly

Bleach Dye Customize



Fab & Fly™
100% HUMAN HAIR

**GRAY
GLAMOUR**

You've never settled for anything less than fabulous, and won't start now! Fab & Fly™ is made with 100% Human Hair, so it's long-lasting. Curl it and straighten it anyway you like. Available in a wide range of gray colors and cuts, so you'll find the perfect finishing touch to step out in style.

- 100% Human Hair
- Breathable Mesh Cap
- Comfortable & Secure Fit
- Voluminous & Full
- Easy-to-Wear & Style
- Also Available in Natural Colors (100% UNPROCESSED HUMAN HAIR)



HH-ADDISON

AVAILABLE COLORS
NATURAL BLACK,
NATURAL BROWN,
34, HL34/51,
OM280/34/44,
OM34/44/51

COLOR SHOWN : 34



HH-ARLETTE

AVAILABLE COLORS
NATURAL BLACK,
NATURAL BROWN,
HL34/51,
OM280/34/44,
OM34/44/51

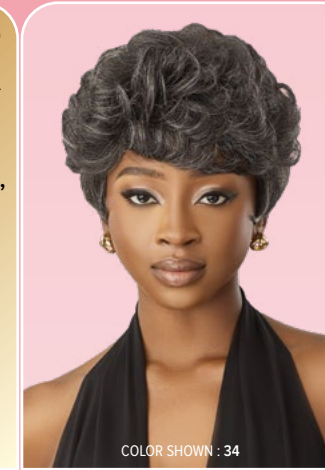
COLOR SHOWN : HL34/51



HH-HARRIET

AVAILABLE COLORS
NATURAL BLACK,
NATURAL BROWN,
34, FF34/51,
OM280/34/44,
OM34/44/51

COLOR SHOWN : 34



HH-JOAN

AVAILABLE COLORS
NATURAL BLACK,
NATURAL BROWN,
34, HL34/51,
OM280/34/44,
OM34/44/51

COLOR SHOWN : 34



HH-MARINETTE

AVAILABLE COLORS
NATURAL BLACK,
NATURAL BROWN,
34, HL34/51,
OM280/34/44,
OM34/44/51

COLOR SHOWN : HL34/51



HH-ASHA

AVAILABLE COLORS
NATURAL BLACK,
NATURAL BROWN,
34, HL34/51,
OM280/34/44,
OM34/44/51

COLOR SHOWN : OM280/34/44



HH-CARLIE

AVAILABLE COLORS
NATURAL BLACK,
NATURAL BROWN,
34, 44, 51

COLOR SHOWN : 34



HH-THEODORA

AVAILABLE COLORS
NATURAL BLACK,
NATURAL BROWN,
34, HL34/51,
OM280/34/44,
OM34/44/51

COLOR SHOWN : OM34/44/51



HH-VERONICA

AVAILABLE COLORS
NATURAL BLACK,
NATURAL BROWN,
34, 56,
OM280/34/44,
OM34/44/51

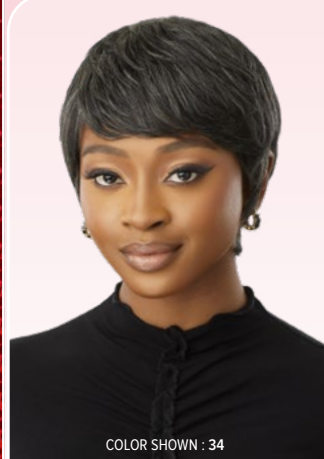
COLOR SHOWN : OM34/44/51



HH-ZAIDA

AVAILABLE COLORS
NATURAL BLACK,
NATURAL BROWN,
34, HL34/51,
OM280/34/44,
OM34/44/51

COLOR SHOWN : HL34/51



HH-CELIA

AVAILABLE COLORS
NATURAL BLACK,
NATURAL BROWN,
34, 44, 280,
HL280/44,
OM280/44

COLOR SHOWN : 34



HH-DERIA

AVAILABLE COLORS
NATURAL BLACK,
NATURAL BROWN,
34, 51, FF34/51,
OM280/34/44,
OM34/44/51

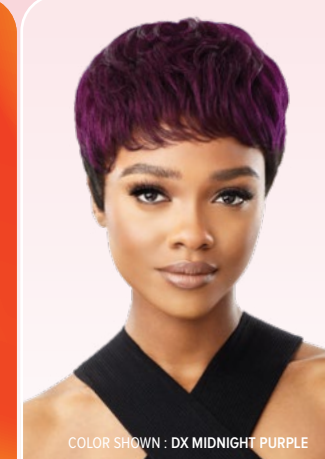
COLOR SHOWN : 34



HH-BEVERLY

AVAILABLE COLORS
NATURAL BLACK,
NATURAL BROWN,
DR GOLD RUSH,
DR SANDY BLONDE,
DX CHERRY ROUGE,
DX MIDNIGHT BLUE,
DX MIDNIGHT PURPLE,
DX STONE GRAY

COLOR SHOWN : DX CHERRY ROUGE



HH-ESME

AVAILABLE COLORS
NATURAL BLACK,
NATURAL BROWN,
DR GOLD RUSH,
DX CHERRY ROUGE,
DX MIDNIGHT BLUE,
DX MIDNIGHT PURPLE,
DX STONE GRAY

COLOR SHOWN : DX MIDNIGHT PURPLE



HH-DINA

AVAILABLE COLORS
NATURAL BLACK,
NATURAL BROWN,
34, HL34/51,
OM280/34/44,
OM34/44/51

COLOR SHOWN : HL34/51



HH-EDEN

AVAILABLE COLORS
NATURAL BLACK,
NATURAL BROWN,
34, HL34/51,
OM280/34/44,
OM34/44/51

COLOR SHOWN : OM280/34/44



HH-SOFINA

AVAILABLE COLORS
NATURAL BLACK,
NATURAL BROWN,
DR SANDY BLONDE,
DX CHERRY ROUGE,
DX GOLD RUSH,
DX MIDNIGHT BLUE,
DX MIDNIGHT PURPLE,
DX STONE GRAY

COLOR SHOWN : DX GOLD RUSH



HH-ZAYNA

AVAILABLE COLORS
NATURAL BLACK,
NATURAL BROWN,
613, DB 1B/350,
DB 1B/BURGUNDY,
DB 1B/VIOLET,
DB4/2730,
DR27, DR30

COLOR SHOWN : DB 1B/BURGUNDY

Fab & Fly™
100% HUMAN HAIR

**color
queen**



Styles to Haunt & Flaunt

Outre makes Halloween hair easy. Our wigs offer a wide range of colors, lengths, and styles to suit every costume and holiday occasion! From spooky to stylish, our fall-inspired selections will help you make a statement this season!



COLOR SHOWN : BLUE ANGEL



KALIYA 22"



AVAILABLE COLORS
1, 1B, 2, BLUE ANGEL, CINNAMON BROWN, PEARL BLONDE, RUBY ESPRESSO, DRFF BLACK JADE, DRFF BLACK PINK, DR/OL MOONLIT NIGHT, DRST CHOCOLATE SWIRL



COLOR SHOWN : SWEDISH BLONDE



SWOOP 1 24"



AVAILABLE COLORS
1, 1B, 2, BURGUNDY FLAME, BUTTERSCOTCH BLONDE, GINGER SPICE, HAZELNUT HONEY, SWEDISH BLONDE, SWISS BROWN, DRFF AMBER SUNSET, DRFF CARAMEL MOCHA



COLOR SHOWN : 3DRST APRICOT PLUM



KRISTYN 22"



AVAILABLE COLORS
1, 1B, 2, NATURAL HONEY, RED VELVET, DR CHOCOLATE SWIRL, DR COPPER ORANGE, DR4/CALIFORNIA BLONDE, 3DRST APRICOT PLUM, 3DRST COCOA CREAM



COLOR SHOWN : DRFF MIDNIGHT SUNSET



MAKEIDA 34"



AVAILABLE COLORS
1, 1B, 2, 613, DRST HONEY BROWN, DRFF MIDNIGHT SUNSET, DRFF MIDNIGHT RUBY ROSE, DRF4/VANILLA CARAMEL



COLOR SHOWN : FF 1B/DIPPED BLONDE



PRESLEY 24"



AVAILABLE COLORS
1, 1B, 2, DARK VIOLET, GINGER BROWN, TIRAMISU, WARM APRICOT, DRST JADE BLUE, DRST RED VELVET, DRST2/CHOCOLATE CARAMEL, DRST2/ROSE BROWN, FF 1B/DIPPED BLONDE



COLOR SHOWN : DR/UL FAIRY FLOSS

KIMISHA 36"



AVAILABLE COLORS
 1, 1B, DR/UL FAIRY FLOSS,
 DR/UL PHOENIX SUN, DR/UL PINK UNICORN,
 DR4/UL ORANGE SHERBET, 3DR4/UL FROSTED PASTEL,
 MC/UL MIDNIGHT PARADISE

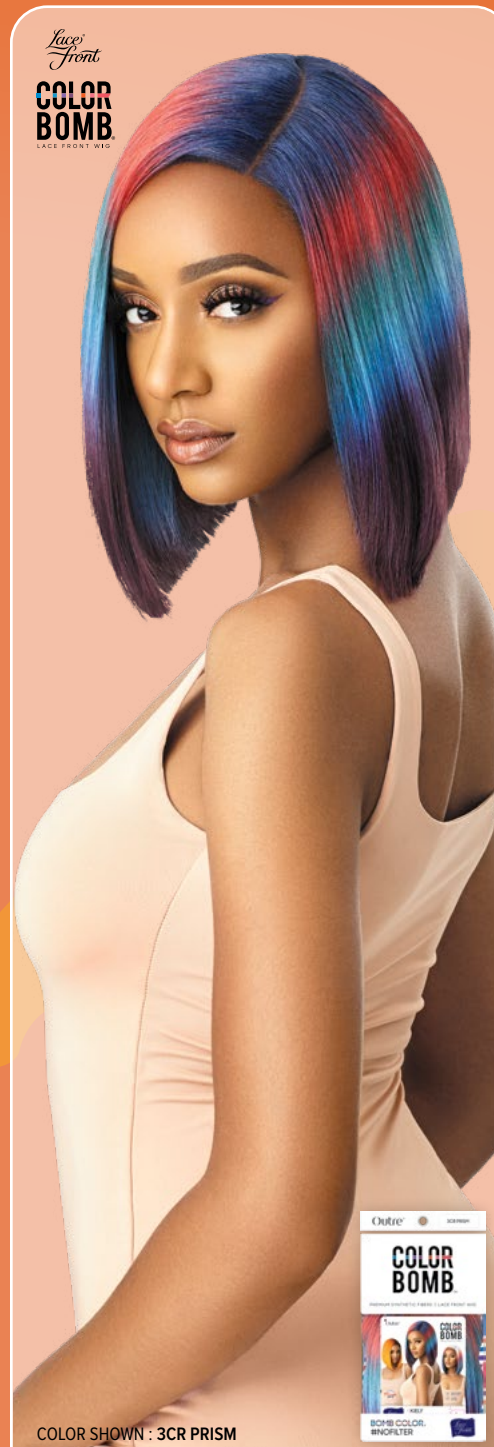


COLOR SHOWN : EMERALD GREEN

KAYCEE 24"



AVAILABLE COLORS
 1, 1B, BLUE MOON, BURNT COPPER,
 EMERALD GREEN, FLAMINGO PINK, HOT RED,
 PURPLE DREAM, VANILLA BLONDE



COLOR SHOWN : 3CR PRISM

KIELY 12"



AVAILABLE COLORS
 1, 1B, 613, DR RUBY PINK,
 3DR OCEAN BLUE,
 3DR VIOLET ORCHID,
 3CR ALASKAN SUNSET,
 3CR PINK/BABY PINK,
 3CR PRISM,
 3CR PURPLE PEACH MELT,
 3CR SUNFLOWER



COLOR SHOWN : DRFF 1B/ATOMIC BLUE

HONOR 24"



AVAILABLE COLORS
 DRFF 1B/ATOMIC BLUE,
 DRFF 1B/CALIFORNIA BLONDE,
 DRFF 1B/FUCHSIA,
 DRFF 1B/PLATINUM SILVER,
 DRFF 1B/PURPLE VIOLET,
 DRFF 1B/RICH BURGUNDY



COLOR SHOWN : RICH FUCHSIA

AKARI 24"



AVAILABLE COLORS
 1, 1B,
 RICH FUCHSIA,
 RICH GINGER,
 RICH GREEN,
 RICH ICY BLONDE,
 RICH PURPLE,
 RICH RED,
 RICH SAPPHIRE BLUE



SWOOP 6

CARAMEL BROWN



SWOOP 8

1B/DRFF SAPPHIRE FROST



SWOOP 7

HONEYCOMB BLONDE

PERFECT
HAIRLINE
*Swoop*TM
SERIES

LACE FRONTAL WIG

MORE LACE SPACE FOR SWOOPS

DEEPER, MORE HAND-TIED LACE AREA & BABY HAIRS STYLING SPACE

13" x 4" LACE FRONTAL

GLUELESS PRE-ATTACHED ELASTIC BAND



SWOOP 1

SWEDISH BLONDE



SWOOP 2

BURGUNDY FLAME



SWOOP 3

GINGER SPICE



SWOOP 4

SWEDISH BLONDE



SWOOP 5

GINGER SPICE

AVAILABLE COLORS :

SWOOP 1-5: 1, 1B, 2, BURGUNDY FLAME, BUTTERSCOTCH BLONDE, GINGER SPICE, HAZELNUT HONEY, SWEDISH BLONDE, SWISS BROWN, DRFF AMBER SUNSET, DRFF CARAMEL MOCHA

SWOOP 6-7: 1, 1B, 2, BURGUNDY FLAME, HONEYCOMB BLONDE, GINGER SPICE, HAZELNUT HONEY, SWEDISH BLONDE, CARAMEL BROWN, DRFF AMBER SUNSET, DRFF CARAMEL MOCHA

SWOOP 8: 1, 1B, 2, BURGUNDY FLAME, GINGER SPICE, LIGHT HONEY, SWEDISH BLONDE, SWISS BROWN, DR2/BL HAZELNUT, DRFF CARAMEL MOCHA, 1B/DRFF SAPPHIRE FROST

