

OCTOBER 2023

®

Outre



STYLE & COLOR SHOWN:
COLORBOMB_CELINA_DR/OL SNOW WHITE (LEFT)
WIGPOP COLORPLAY_TRIXIE_TD VAMPIRE NIGHT (RIGHT)

WIGS TO HAUNT
AND FLAUNT 

Outre
85 Oxford Drive,
Moonachie, NJ 07074
USA

IN THIS ISSUE

From the changing leaves to the spooky Halloween nights, our wigs suit every fall occasion. Stock our fall-inspired selections in cuts and cool-weather colors that captures your customers' seasonal style and Halloween imagination.

<p>BRAID 03 ORIGINAL BOHO GODDESS LOCS 24" 3X NEW COLORS</p>	<p>BRAID 04 PRE-STRETCHED BRAID 42" 3X PRE-STRETCHED BRAID 52" 3X NEW COLORS</p>	<p>BRAID 06 OUTRE BOHO STYLE ITEMS</p>	<p>BRAID 08 OUTRE BOHO STYLE ITEMS</p>
<p>BRAID 10 OUTRE ALL BOX BRAIDS</p>	<p>LACE WIG 12 PERFECT HAIRLINE FARIS KEESHON MONIECE</p>	<p>LACE WIG 14 melted HAIRLINE LACE FRONT WIG RUBINA</p>	<p>LACE WIG 15 EVERY27 EVERY28</p>
<p>U-PART WIG 16 Big Beautiful Hair LEAVE OUT WIG LATE HARPER HAIR PREMIUM BLEND</p>	<p>FULL WIG 17 wigpop SYNTHETIC FULL WIG Style SELECTS POLARIS</p>	<p>CATALOG 18 OUTRE HALLOWEEN WIGS</p>	



COLOR SHOWN : DRAGON FRUIT

X-Pression® Twisted Up®

100% PREMIUM SYNTHETIC FIBER

Get Boho Goddess Locs 24" in new fall-favorite colors!

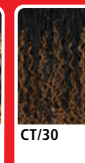
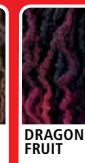
- Premium Synthetic Fiber
- Quick, Long Lasting Protective Style
- Soft Texture
- Lightweight
- Flame Retardant

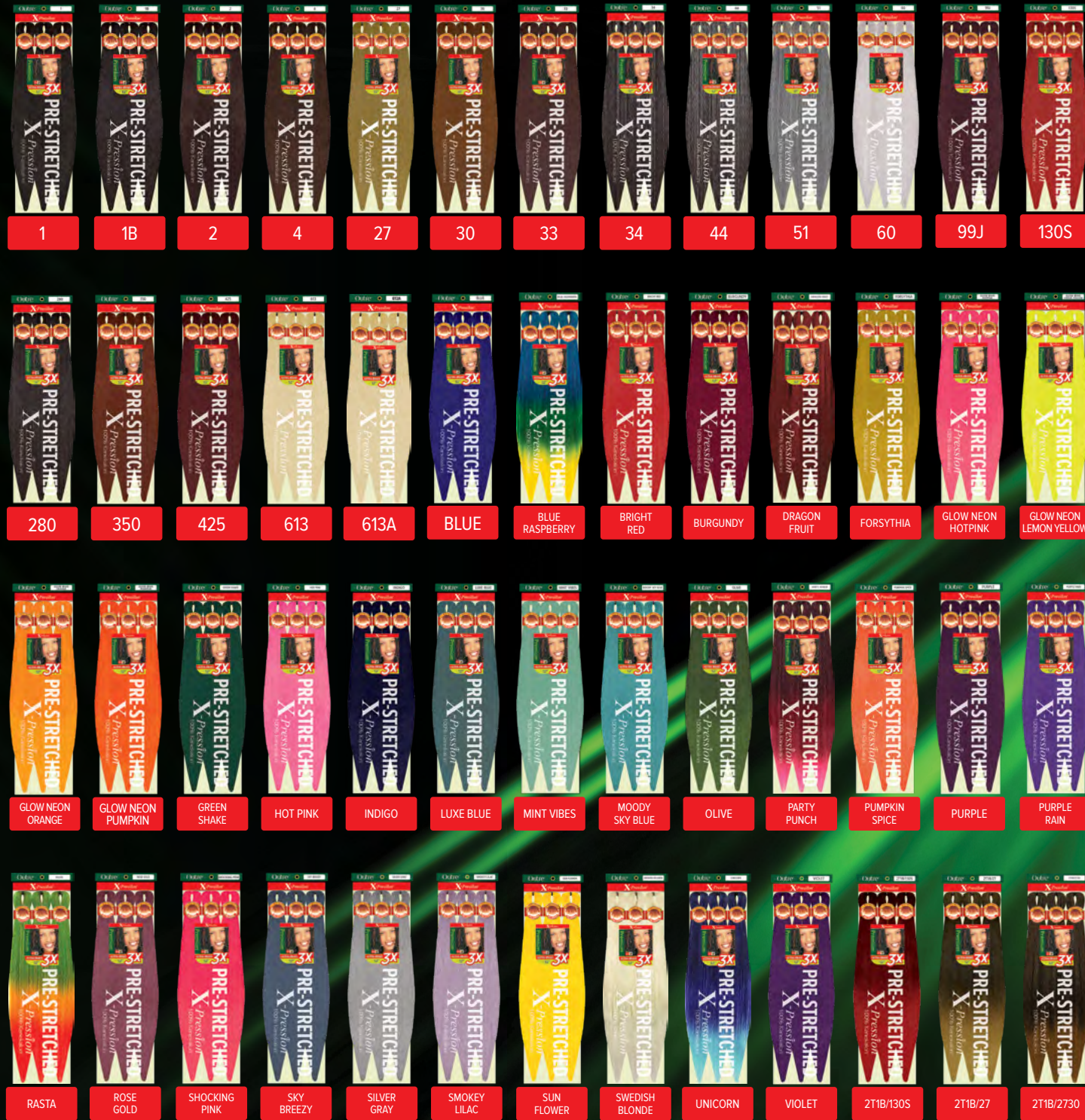
NEW COLORS



ORIGINAL BOHO GODDESS LOCS 24" 3X

AVAILABLE COLORS
1, 1B, 2, 4,
2T1B/27, 2T1B/30, CT/27,
CT/30, CT/350, CT/425,
MACCHIATO, DRAGON FRUIT





NEW COLORS



X-PreSSION®
PRE-STRETCHED



Kick up the color this fall with 42" and 52" lengths in new mixed shades featuring ginger, plum, and auburn tones.

- Pre-Stretched & Pre-Layered
- Ultra Lightweight
- Quickest Install
- Hot Water Set Friendly
- Easy to Braid
- Tangle-Free
- Easy to Manage

PRE-STRETCHED BRAID 42" 3X

AVAILABLE COLORS :
1, 130S, 1B, 2, 27, 30, 33, 34, 350, 4, 425, 44, 51, 60, 280, 613, 613A, 99J, 2T1B/130S, 2T1B/27, 2T1B/2730, 2T1B/27613, 2T1B/30, 2T1B/33, 2T1B/350, 2T1B/60, 2T1B/BLUE, 2T1B/BURGUNDY, 2T1B/FORSYTHIA, 2T1B/INDIGO, 2T1B/LUXE BLUE, 2T1B/MINT VIBES, 2T1B/OLIVE, 2T1B/SHOCKING PINK, BLUE, BURGUNDY, DRAGON FRUIT, FORSYTHIA, INDIGO, LUXE BLUE, M1B/30, M1B/350, M1B/425, M4/30, M4/27/30, M4/27/613, M27/613, M27/30/613, M27/30, MINT VIBES, OLIVE, PURPLE, SHOCKING PINK, VIOLET

PRE-STRETCHED BRAID 52" 3X

AVAILABLE COLORS :
1, 1B, 2, 4, 27, 30, 33, 34, 44, 51, 60, 99J, 130S, 280, 350, 425, 613, 613A, BLUE, BLUE RASPBERRY, BRIGHT RED, BURGUNDY, DRAGON FRUIT, FORSYTHIA, GLOW NEON HOTPINK, GLOW NEON LEMON YELLOW, GLOW NEON ORANGE, GLOW NEON PUMPKIN, GREEN SHAKE, HOT PINK, INDIGO, LUXE BLUE, MINT VIBES, MOODY SKY BLUE, OLIVE, PARTY PUNCH, PUMPKIN SPICE, PURPLE, PURPLE RAIN, RASTA, ROSE GOLD, SHOCKING PINK, SKY BREEZY, SILVER GRAY, SMOKEY LILAC, SUN FLOWER, SWEDISH BLONDE, UNICORN, VIOLET, 2T1B/130S, 2T1B/27, 2T1B/2730, 2T1B/27613, 2T1B/30, 2T1B/33, 2T1B/350, 2T1B/60, 2T1B/BLUE, 2T1B/BURGUNDY, 2T1B/FORSYTHIA, 2T1B/INDIGO, 2T1B/LUXE BLUE, 2T1B/MINT VIBES, 2T1B/OLIVE, 2T1B/PURPLE, 2T1B/ROSE GOLD, 2T1B/SHOCKING PINK, 2T1B/SILVER GRAY, M1B/30, M1B/350, M1B/425, M4/30, M27/30, M27/613, M27/30/613, M4/27/30, M4/27/613

HOW TO MAKE BOHO STYLE

WITH WATERWAVE FRO TWIST + MYTRESSES GOLD BULK HAIR



PRODUCTS HAIRSCOPE USED:
- Twisted Up Waterwave Fro Twist 22" 2X
- MyTresses Gold Label Pre-Stretched 100% Unprocessed Human Hair Bulk_Natural Deep 18"



Influencer, Hairiscope, mixed and matched Outre products to create this hip-length, beautiful **Boho style**.

But there's more than just one Boho look! With **X-Pression, Twisted Up, and MyTresses Gold Bulk Hair**, professional and DIY braiders can create them all.

1 SECTION IT

“Section hair and secure with small hair ties.”

2 CROCHET IT

“Crochet a piece of **Twisted Up Waterwave Fro Twist** into base of section.”

3 TWIST IT

“Blend and twist natural hair with **Twisted Up Waterwave Fro Twist** piece.”

4 MAKE IT CURLY

“Add and blend the twist with 1 piece of curly, **MyTresses Gold Label Bulk Hair**. Leave some of the curly hair out.”

5 FINISH IT

“Continue twisting to ends. Finish by knotting a loose piece of **Twisted Up** hair Waterwave Fro Twist. Use nail glue to seal ends.”



COLOR SHOWN : 2T1B/30

BONITA BOHO CRUSH LOCS 12"

AVAILABLE COLORS
1, 1B, 2, 4, 2T1B/27, 2T1B/30, 2T1B/425



COLOR SHOWN : 2T1B/30

BONITA BOHO CRUSH LOCS 20"

AVAILABLE COLORS
1, 1B, 2, 4, 2T1B/27, 2T1B/30, 2T1B/425



COLOR SHOWN : DRAGON FRUIT

BOHO WAVY BOMB TWIST 10" 2X

AVAILABLE COLORS
1, 1B, 2, 4, 2T1B/27, 2T1B/30, MACCHIATO, DRAGON FRUIT



COLOR SHOWN : 2T1B/30

BOHO WAVY BOMB TWIST 20"

AVAILABLE COLORS
1, 1B, 2, 4, 425, 51, 613, 950, 2T1B/27, 2T1B/30, 2T1B/350, 2T1B/425



COLOR SHOWN : DRAGON FRUIT

ORIGINAL BOHO GODDESS LOCS 24" 3X

AVAILABLE COLORS
1, 1B, 2, 4, 2T1B/27, 2T1B/30, CT/27, CT/30, CT/350, CT/425, MACCHIATO, DRAGON FRUIT



COLOR SHOWN : CT/MACCHIATO

BOHO BOX BRAID 12" 3X

AVAILABLE COLORS
1, 1B, 2, 4, 613, 950, CT/BLUE, CT/DARK PURPLE, CT/DRAGON FRUIT, CT/HOT PINK, CT/MACCHIATO, CT/RED, CT/27, CT/30, CT/350, CT/425, CT/613



COLOR SHOWN : 2T1B/30

BOHO KINKY PASSION WATERWAVE 24"

AVAILABLE COLORS
1, 1B, 2, 4, 2T1B/27, 2T1B/30, 2T1B/350, 2T1B/425, WHITE BLONDE, PEACH BLONDE



COLOR SHOWN : 2T1B/425

BOHO PASSION WATERWAVE 24"

AVAILABLE COLORS
1, 1B, 2, 4, 2T1B/27, 2T1B/30, 2T1B/350, 2T1B/425, WHITE BLONDE, PEACH BLONDE



COLOR SHOWN : DRAGON FRUIT

BOHO SPRING MERMAID LOCS 18" 3X

AVAILABLE COLORS
1, 1B, 2, 4, 2T1B/30, 2T1B/350, DRAGON FRUIT, MACCHIATO



COLOR SHOWN : MACCHIATO

BOHO PASSION SUMMER TWIST 10" 2X

AVAILABLE COLORS
1, 1B, 2, 4, 2T1B/27, 2T1B/30, MACCHIATO, DRAGON FRUIT



COLOR SHOWN : CT/DRAGON FRUIT

BOHO BOX BRAID 22" 3X

AVAILABLE COLORS
1, 1B, 2, 4, 613, 950, CT/BLUE, CT/DARK PURPLE, CT/DRAGON FRUIT, CT/HOT PINK, CT/MACCHIATO, CT/RED, CT/27, CT/30, CT/350, CT/425, CT/613



COLOR SHOWN : CT/350

BOHO BOX BRAID 32" 3X

AVAILABLE COLORS
1, 1B, 2, 4, 2T1B/27, 2T1B/30, CT/27, CT/30, CT/350, CT/425

X-Pression
Twisted Up
100% PREMIUM SYNTHETIC FIBER

BOHO STYLES

Available in various lengths and varieties, Outre's style-in-a-pack options makes Boho braids and locs DIY-friendly. No expensive salon appointments needed; simply cornrow, crochet, and go!

CROCHET LOOP

LIGHTWEIGHT

ORIGINAL BOX BRAID

18"/24"/30" 3X

BOX BRAID FRENCH CURL

22" 3X

BOHO BOX BRAID

12"/22"/32" 3X

X-Pression®

Twisted Up®

OUTRE BOX BRAIDS: SLAY THE DIY WAY

- Made with 100% Premium Synthetic Fiber
- Quick, Long-Lasting Protective Style
- Easy to Maintain & Manage
- Soft Texture & Lightweight



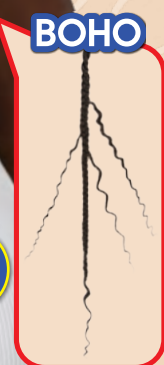
18" COLOR SHOWN: 2T1B/425
30" COLOR SHOWN: 2T1B/30
24" COLOR SHOWN: 2T1B/27



22" COLOR SHOWN: 2T1B/30



12" COLOR SHOWN: CT/MACCHIATO
32" COLOR SHOWN: CT/350
22" COLOR SHOWN: CT/DAGON FRUIT



SPECIAL COLORS



LIGHTWEIGHT

AVAILABLE COLORS

ORIGINAL BOX BRAID : 1, 1B, 2, 4, 613, 2T1B/27, 2T1B/30, 2T1B/425, MACCHIATO, DRAGON FRUIT

BOX BRAID FRENCH CURL : 1, 1B, 2, 4, 2T1B/27, 2T1B/30, 2T1B/425, MACCHIATO, DRAGON FRUIT

SPECIAL COLORS



AVAILABLE COLORS : 1, 1B, 2, 4, 613, 950, CT/BLUE, CT/DARK PURPLE, CT/DAGON FRUIT, CT/HOTPINK, CT/MACCHIATO, CT/RED, CT/27, CT/30, CT/350, CT/425, CT/613



COLOR SHOWN : DRST4/GINGER SPICE



COLOR SHOWN : DRFF2/BRONDE BALAYAGE



COLOR SHOWN : DRFF2/DARK HONEY MELT



PERFECT HAIRLINE™

FULLY HAND-TIED 13"X6" LACE WIG

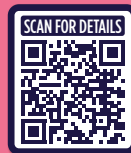
Faris offers face framing layers, flattering fall colors and the ability to part freely.

With Keeshon, get parting freedom, styling options and the perfect amount of texture.

Moniece features gorgeous, 24" wand curls and multi-faceted colors.

- Fully Hand-Tied 13" x 6" Frontal
- Ear-to-Ear Soft HD Transparent Lace
- Natural Baby Hairs
- Comes With Pre-Attached Elastic Band
- Fast, Easy & Effortless Glueless Installs
- Pre-Plucked Hairline
- Heat-Styling Friendly

FARIS 22"

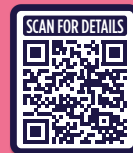


COLOR SHOWN : DRST4/VANILLA COCOA MELT, DRST HAZELNUT MOCHA, DRST4/GINGER SPICE (LEFT TO RIGHT)

AVAILABLE COLORS
1, 1B, 2, STRAWBERRY GOLD, DR4/BL SOFT BLONDE, DRST HAZELNUT MOCHA, DRST SILVER NOIR, DRST4/GINGER SPICE, DRST4/VANILLA COCOA MELT, DRFF2/CHERRY RED



KEESHON 22"



COLOR SHOWN : DRST HAZELNUT MOCHA, DRST SILVER NOIR, DRFF2/BRONDE BALAYAGE (LEFT TO RIGHT)

AVAILABLE COLORS
1, 1B, 2, STRAWBERRY GOLD, DR4/BL SOFT BLONDE, DRST HAZELNUT MOCHA, DRST SILVER NOIR, DRST4/GINGER SPICE, DRFF2/BRONDE BALAYAGE, DRFF2/CHERRY RED



MONIECE 24"



COLOR SHOWN : DRST4/CHOCOLATE GOLD, DRFF2/CHERRY RED, DRFF2/DARK HONEY MELT (LEFT TO RIGHT)

AVAILABLE COLORS
1, 1B, 2, STRAWBERRY GOLD, DR2/CHOCOLATE SWIRL, DR4/BL SOFT BLONDE, DRST4/CHOCOLATE GOLD, DRST4/GINGER SPICE, DRFF2/CHERRY RED, DRFF2/DARK HONEY MELT





COLOR SHOWN : SPICY RED



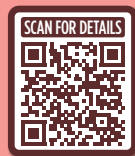
melted HAIRLINE

LACE FRONT WIG

Available in hot colors like Spicy Red, Rubina's big, defined, mid-length curls are this season's must-have.

- Soft HD Transparent Lace
- 5" Deep Parting
- Completely Pre-Plucked Hairline & Sideburns
- Pre-Attached Wide Elastic Band for Secure Fit
- Fast, Easy & Effortless Glueless Installs
- Natural Baby Hairs
- Redesigned ComfortFit Ear Contour
- High Heat Resistant Fiber

RUBINA 18"



COLOR SHOWN : DRFF AMBER SUNSET, DRFF CARAMEL MOCHA, SPICY RED, SPICY RED (LEFT TO RIGHT)

- AVAILABLE COLORS
- 1, 1B, 2,
 - SPICY RED,
 - DR2/GINGER COPPER,
 - DR4/SANDY BLONDE,
 - DRFF AMBER SUNSET,
 - DRFF CARAMEL MOCHA,
 - DRFF4/GOLDEN HONEY



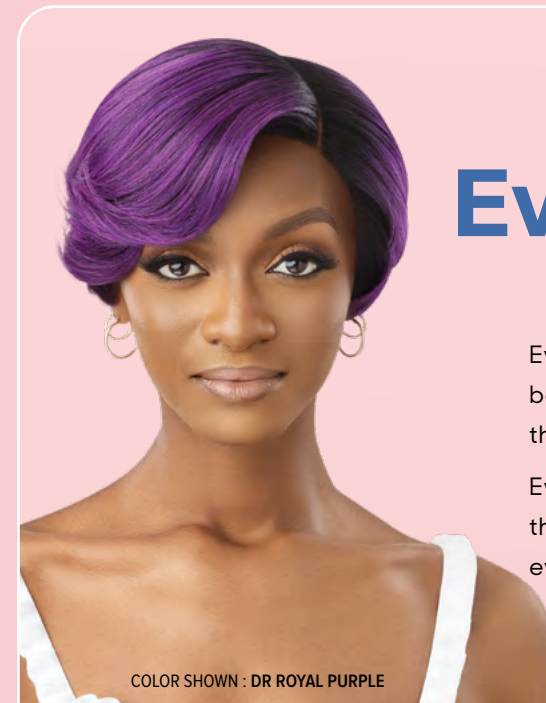
COLOR SHOWN : DR DRAGON FRUIT

EVERY27 16"



COLOR SHOWN : DRF2/AUBURN SPICE, DR DRAGON FRUIT, DR DRAGON FRUIT (LEFT TO RIGHT)

- AVAILABLE COLORS
- 1, 1B, 2,
 - GOLDEN HONEY BLONDE,
 - DR DRAGON FRUIT,
 - DR GINGER TOFFEE,
 - DR2/VANILLA COCOA,
 - DRF ESPRESSO BROWN,
 - DRF2/AUBURN SPICE



COLOR SHOWN : DR ROYAL PURPLE

EveryWear

LACE FRONT WIG

Every27's spirally bob in gingers and beautiful browns is just in time for the big, curly hair season.

Every28 is a polished pixie that's perfect for the office and everywhere else.

EVERY28



COLOR SHOWN : DR4/STRAWBERRY GOLD, DR ROYAL PURPLE, DR ROYAL PURPLE (LEFT TO RIGHT)

- AVAILABLE COLORS
- 1, 1B, 2, 99J,
 - GOLDEN HONEY BLONDE,
 - DR GINGER BROWN,
 - DR ROYAL BLUE,
 - DR ROYAL PURPLE,
 - DR2/CHOCOLATE SWIRL,
 - DR4/STRAWBERRY GOLD,
 - DRF2/WILD RED



- Ear-to-Ear HD Lace
- Easy, Goes-with-Everything Styles
- High Heat Resistant Fiber





LEAVE OUT WIG
100% HUMAN HAIR PREMIUM BLEND

Dominican Body Curl's textured, salon-blowout style makes this u-part wig both beautiful and effortlessly blendable.

- Human Hair Blend with Natural Luster
- Thin, Hidden Weft with Hand-Tied Edges
- Narrower U-Part Opening for Less Leave Out
- Reveals Your Own Part for a Natural Look
- Shiftable - Place the Part Anywhere
- Clips & Combs for Security
- Heat-Styling Friendly
- Bacteria-Resistant Cap



COLOR SHOWN : NATURAL BLACK



AVAILABLE COLORS

- JET BLACK,
NATURAL BLACK,
NATURAL BROWN,
CHOCOLATE BROWN,
DR DRAGON FRUIT,
DR GINGER TOFFEE
DR1B/2T3027

DOMINICAN BODY CURL 20"



COLOR SHOWN : DR DRAGON FRUIT, NATURAL BLACK, NATURAL BLACK (LEFT TO RIGHT)



CHOCOLATE BROWN

DR DRAGON FRUIT

DR GINGER TOFFEE

DR1B/2T3027



COLOR SHOWN : DRFF CHERRY CRUSH



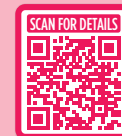
SYNTHETIC FULL WIG



Create a look fit for a princess with Polaris's feathered bangs, and curls!

- Easy to Wear, Elevated Looks
- Special Styles:
More Curls, More Textures, More Length
- Ready to Wear & Go
- Heat-Styling Friendly

POLARIS 22"



AVAILABLE COLORS

- 1, 1B, 2,
DRST2/CHOCOLATE
CAMEL,
DR4/TIRAMISU,
DRF4/VANILLA CAMEL,
DRFF CHERRY CRUSH,
DRFF2/GINGER BROWN



COLOR SHOWN : DRST2/CHOCOLATE CAMEL, DRFF CHERRY CRUSH (LEFT TO RIGHT)



DRST2/CHOCOLATE CAMEL

DR4/TIRAMISU

DRF4/VANILLA CAMEL

DRFF CHERRY CRUSH

DRFF2/GINGER BROWN





Lace front
COLOR BOMB
PREMIUM SYNTHETIC FIBERS

WIGS TO HAUNT AND FLAUNT 🎃

Our curated selection of Halloween wigs will elevate your customers' spooky looks. From wicked witches to alluring vampires, these units will complete their transformation!

COLOR SHOWN : UL1B/LEMON DROP

MIRAJ 🎃

AVAILABLE COLORS
1, 1B, UL1B/BLUE ANGEL, UL1B/CHILI RED, UL1B/ELECTRIC VIOLET, UL1B/LEMON DROP, UL1B/PINK PUNCH, UL1B/RAINBOW, UL1B/TUSCAN SUN

SCAN FOR DETAILS



Lace front
COLOR BOMB
PREMIUM SYNTHETIC FIBERS

COLOR SHOWN : DR/OL SNOW WHITE

CELINA 🎃

AVAILABLE COLORS
1, 1B, DR/OL MERLOT, DR/OL ORANGE FUSION, DR/OL PETAL PINK, DR/OL SNOW WHITE, 3DR/OL AQUA BLUE, 3DR/OL TEAL

SCAN FOR DETAILS



wigpop
SYNTHETIC FULL WIG
colorplay

COLOR SHOWN : TD VAMPIRE NIGHT

TRIXIE 🎃

AVAILABLE COLORS
1, 1B, TD AURORA GREEN, TD COSMIC MAGENTA, TD CREME BRULEE, TD MIDNIGHT BLAZE, TD SMOKEY LAVENDER, TD VAMPIRE NIGHT, TD WILD RAINBOW

SCAN FOR DETAILS



Lace front
COLOR BOMB
PREMIUM SYNTHETIC FIBERS

COLOR SHOWN : EMERALD GREEN

KAYCEE 🎃

AVAILABLE COLORS
1, 1B, BLUE MOON, BURNT COPPER, EMERALD GREEN, FLAMINGO PINK, HOT RED, PURPLE DREAM, VANILLA BLONDE

SCAN FOR DETAILS



melted HAIRLINE
LACE FRONT WIG

COLOR SHOWN : DRFF MIDNIGHT RUBY ROSE

MAKEIDA 🎃

AVAILABLE COLORS
1, 1B, 2, 613, DRST HONEY BROWN, DRFF MIDNIGHT SUNSET, DRFF MIDNIGHT RUBY ROSE, DRF4/VANILLA CARAMEL

SCAN FOR DETAILS



Lace front
COLOR BOMB
PREMIUM SYNTHETIC FIBERS

COLOR SHOWN : 1B/DRFF ORANGE BLAZE

CHANDICE 🎃

AVAILABLE COLORS
1, 1B, 613, 1B/DRFF COTTON CANDY PINK, 1B/DRFF DEEP VIOLET, 1B/DRFF DIAMOND BLONDE, 1B/DRFF ELECTRIC BLUE, 1B/DRFF EMERALD GREEN, 1B/DRFF ORANGE BLAZE, 1B/DRFF VIVID RED

SCAN FOR DETAILS



Lace front
COLOR BOMB
PREMIUM SYNTHETIC FIBERS

COLOR SHOWN : DR/UL PHOENIX SUN

MARINA 🎃

AVAILABLE COLORS
1, 1B, 613, DR/UL AQUAMARINE, DR/UL FAIRY FLOSS, DR/UL PHOENIX SUN, DR/UL PINK UNICORN, DR/UL ORANGE SHERBET, 3DR4/UL FROSTED PASTEL, MC/UL MIDNIGHT PARADISE

SCAN FOR DETAILS

X-Pression
Twisted Up®

Never Pick the
Wrong Hair Again



SMALLER CURL

MEDIUM

BIGGER CURL



4C

SPRINGY AFRO
TWIST



Made to mimic 4C tight curls. It has medium sheen, and lots of volume. Creates classic, spring twists; voluminous, kinky ponytails; highly-textured faux locs and more! 4c hair type.



4A

SPRINGY
BOHEMIAN TWIST



Springy Bohemian Twist has more texture than Waterwave Fro Twist, and looser curls than Springy Afro Twist. These 4A curls are voluminous and silky with a hint of texture. Creates slightly textured Passion Twist, locs with sheen and endless additional styles. 4A hair type.



3C

WATERWAVE
FRO TWIST



For small, defined 3C waves with a natural sheen, select Waterwave Fro Twist. Like the classic waterwave style, but pre-fluffed, and with a touch of texture added. Creates passion locs with a bit more sheen, Passion Twists that features less springiness and less volume than Springy Afro Twist.



MIX & MATCH

THE HAIR THAT DOES IT ALL
Crochet, ponytails, twists and more. It's up to you how you twist it up.

