

SEPTEMBER 2024

Outre®



STYLE & COLOR SHOWN:

MELTED HAIRLINE MADELYN | DRST RED VELVET (LEFT)

MELTED HAIRLINE IVARA | DRFF2/HONEY AMBER BROWN (RIGHT)

Outre®
85 Oxford Drive,
Moonachie, NJ 07074
USA




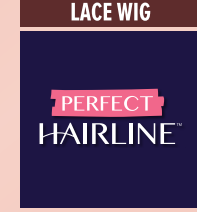




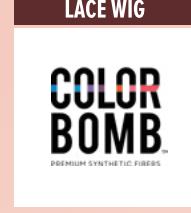




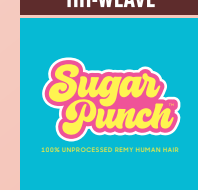
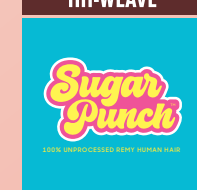
WIG SEASON 2024
MORE COLORS, NEW TRENDS

IN THIS ISSUE

Leaves won't be the only thing changing color this fall. Melted Hairline has new hairstyles in new hues!

Our bangs, bobs, feathered layers, and long lengths come in classic and electric colors. Try Primrose in Chocolate Swirl, Matilda in Warm Apricot, or Mandisa in Dark Violet.

So get ready for wig season and dig into our new units from Melted Hairline. Your favorite brand has fall looks waiting for you.

<p>HH-LACE WIG 03 HH-NATURAL PIXIE</p> 	<p>BRAID 04 X-PRESSION</p> 	<p>HHB-LACE WIG 06 ALL AIRTIED ITEMS</p> 	<p>LACE WIG 08 LORI FIORINA KIHARA</p> 
<p>LACE WIG 10 KASHIA WESLYN ANYCIA</p> 	<p>LACE WIG 12 LAILA MANDISA MATILDA</p> 	<p>LACE WIG 14 ELIANNE MADINA IVARA</p> 	<p>LACE WIG 16 MADELYN PRIMROSE PRESLEY</p> 
<p>LACE WIG 18 GALA</p> 	<p>LACE PART WIG 19 VALE</p> 	<p>HH-FULL WIG 20 HH-ALARA HH-RIRI</p> 	<p>FULL WIG 22 DALE JO</p> 
<p>FULL WIG 23 LUIZA</p> 	<p>HH-WEAVE 24 WET & WAVY GYPSY DEEP WET & WAVY SPANISH CURL</p> 	<p>HH-WEAVE 26 SINGLE PACK MULTI PACK LACE CLOSURE</p> 	



My
TRESSES
PREMIUM 100% UNPROCESSED HUMAN HAIR

BLACK LABEL

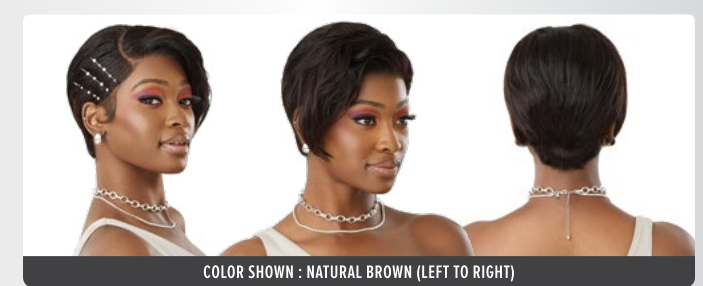
13" x 4"
LACE FRONTAL WIG

If you're looking for something sleek, slicked back, and sexy, then search no more. This human-hair pixie comes with a 13"x4" lace area that lets you pick your part and reveal your hairline.

- 100% Premium Unprocessed Human Hair
- Hand-Tied 13" x 4" Lace Frontal
- HD+ Transparent Lace
- Bleach/Dye/Customize
- Pre-Attached Elastic Band for Glueless Installs
- 3 Pre-Attached Combs for a Secure Fit

COLOR SHOWN : NATURAL BROWN

HH-NATURAL PIXIE



COLOR SHOWN : NATURAL BROWN (LEFT TO RIGHT)

AVAILABLE COLORS : NATURAL BLACK, NATURAL BROWN





X-Pression®

BEYOND BRAIDS THIS IS X-PRESSION.



AVAILABLE LENGTHS :
PRE-STRETCHED BRAID 72" 3X, PRE-STRETCHED BRAID 52" 6X, PRE-STRETCHED BRAID 52" 3X, PRE-STRETCHED BRAID 42" 3X, PRE-STRETCHED BRAID 42" 2X, PRE-STRETCHED BRAID 32" 3X





COLOR SHOWN : DRF GINGER BROWN

HHB-SLEEK YAKI 20"

AVAILABLE COLORS

1, 1B, 2, DR4/TIRAMISU, DRF CHERRY WINE, DRF GINGER BROWN, DRFF4/GOLDEN SWIRL, DRST MAPLE BROWN, DRST2/CHOCOLATE CARAMEL



COLOR SHOWN : DRFF4/GOLDEN SWIRL

HHB-SLEEK YAKI 28"

AVAILABLE COLORS

1, 1B, 2, DR4/TIRAMISU, DRST2/CHOCOLATE CARAMEL, DRST MAPLE BROWN, DRF CHERRY WINE, DRF GINGER BROWN, DRFF4/GOLDEN SWIRL



COLOR SHOWN : DR4/CALIFORNIA BLONDE

HHB-NATURAL YAKI 12"

AVAILABLE COLORS

1, 1B, 2, CHOCOLATE SWIRL, NATURAL HONEY, DR2/CREAMY TOFFEE, DR4/CALIFORNIA BLONDE, DRST HONEY BROWN, DRF CHERRY WINE, DRFF2/GINGER BROWN



COLOR SHOWN : DRF GINGER BROWN

HHB-GLAM WAVES 28"

AVAILABLE COLORS

1, 1B, 2, DR4/TIRAMISU, DRST2/CHOCOLATE CARAMEL, DRST MAPLE BROWN, DRF CHERRY WINE, DRF GINGER BROWN, DRFF4/GOLDEN SWIRL



NEW STYLE
COLOR SHOWN : DRST2/ROSE BROWN

HHB-NATURAL WAVE 20"



COLOR SHOWN : WARM APRICOT, DR4/CALIFORNIA BLONDE, DEEP BURGUNDY (LEFT & RIGHT)



COLOR SHOWN : DRST2/ROSE BROWN (LEFT & RIGHT)

AVAILABLE COLORS

1, 1B, 2, CHOCOLATE SWIRL, CREAM SODA, DEEP BURGUNDY, WARM APRICOT, DR COPPER BROWN, DR2/CREAMY TOFFEE, DR4/CALIFORNIA BLONDE, DRST2/ROSE BROWN

Airtied™

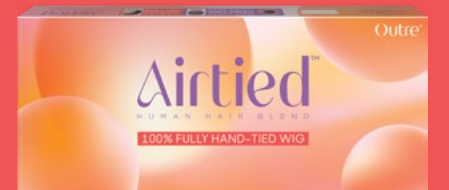
HUMAN HAIR BLEND

100% FULLY HAND-TIED WIG

Get the style of your dreams and a 100% hand-tied cap that's light as a feather and cool as a breeze! See for yourself how cooling and lightweight Airtied is in our new Natural Wave style.

Whoosh! Feel the cool airflow when you wear Airtied's lightweight, 100% hand-tied wig in our new Natural Wave style.

- Human Hair Blend
- 100% Fully Hand-Tied with Vanish HD+ Lace Frontal
- Track-Free, Lightweight & Breathable Mesh Cap
- Thinner & More Flexible for a Seamless Melt
- Pre-Plucked Hairline with Smaller Knots
- Contoured Lace Hairline
- Pre-attached Elastic Band for a Glueless Install



VANISH HD+ LACE

SOFT & THIN MASTERFUL MELT



COLOR SHOWN : DRF GINGER BROWN

HHB-PERM YAKI 26"

AVAILABLE COLORS

1, 1B, 2, DR4/TIRAMISU, DRST2/CHOCOLATE CARAMEL, DRST MAPLE BROWN, DRF CHERRY WINE, DRF GINGER BROWN, DRFF4/GOLDEN SWIRL



COLOR SHOWN : NATURAL HONEY

HHB-NATURAL BODY WAVE 22"

AVAILABLE COLORS

1, 1B, 2, NATURAL HONEY, GINGER BROWN, DR CHOCOLATE TOFFEE, DRF CHERRY WINE, DR2/CREAMY TOFFEE, DR4/CALIFORNIA BLONDE



COLOR SHOWN : DR2/CREAMY TOFFEE

HHB-LOOSE BODY WAVE 18"

AVAILABLE COLORS

1, 1B, 2, DEEP BURGUNDY, GINGER BROWN, NATURAL HONEY, DR2/CREAMY TOFFEE, DR4/CALIFORNIA BLONDE, DRST HONEY BROWN, DRFF CHOCOLATE TOFFEE



COLOR SHOWN : DR CHERRY CRUSH

HHB-DOMINICAN CURLY 22"

AVAILABLE COLORS

1, 1B, 2, DR CHERRY CRUSH, DR4/TIRAMISU, DRST2/CHOCOLATE CARAMEL, DRST MAPLE BROWN, DRF GINGER BROWN, DRFF4/GOLDEN SWIRL



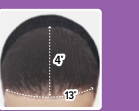
GLUELESS ELASTIC BAND



13''x6'' LACE AREA



BREATHABLE MESH CAP



13''x4'' LACE AREA



13" X 4"

COLOR SHOWN : DEEP BURGUNDY



13" X 6"

COLOR SHOWN : DR4/FROSTED ASH BROWN



COLOR SHOWN : DRFF4/ROSE BROWN

Lace Front
PERFECT HAIRLINE™

FULLY HAND-TIED 13"X6" & 13"X4" LACE WIG

Make the sparkle of your eyes the center of attention with the pixie style, Lori. It's a tapered cut with curls that stop beneath the brows.

Remix the Fiorina wig! This classic style can be worn half up/half down, parted anywhere, and comes in colors like Ocean Blue and Ginger Copper.

Kihara's mid-length layers and special colors will have you collecting compliments all summer long.

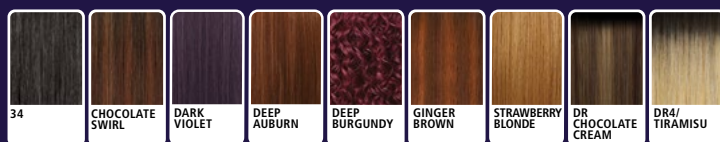
- Fully Hand-Tied 13" x 4" & 13" x 6" Frontals
- Ear-to-Ear Soft HD Transparent Lace
- Natural Baby Hairs
- Comes With a Pre-Attached Elastic Band
- Fast, Easy & Effortless Glueless Installs
- Pre-Plucked Hairline
- Heat-Styling Friendly

LORI



COLOR SHOWN : 1B, DR4/TIRAMISU, DEEP BURGUNDY, DEEP BURGUNDY (LEFT TO RIGHT)

AVAILABLE COLORS
1, 1B, 2, 34, CHOCOLATE SWIRL, DARK VIOLET, DEEP AUBURN, DEEP BURGUNDY, GINGER BROWN, STRAWBERRY BLONDE, DR CHOCOLATE CREAM, DR4/TIRAMISU



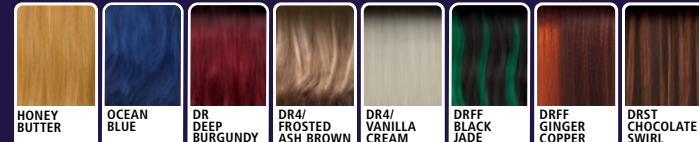
FIORINA

22"



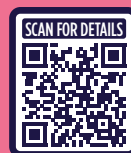
COLOR SHOWN : OCEAN BLUE, DR DEEP BURGUNDY, DR4/FROSTED ASH BROWN, DR4/FROSTED ASH BROWN (LEFT TO RIGHT)

AVAILABLE COLORS
1, 1B, 2, HONEY BUTTER, OCEAN BLUE, DR DEEP BURGUNDY, DR4/FROSTED ASH BROWN, DR4/VANILLA CREAM, DRFF BLACK JADE, DRFF GINGER COPPER, DRST CHOCOLATE SWIRL



KIHARA

22"



COLOR SHOWN : LR613/HEAVENLY PINK, DRFF4/HONEY AUBURN, DRFF4/ROSE BROWN, DRFF4/ROSE BROWN (LEFT TO RIGHT)

AVAILABLE COLORS
1, 1B, 2, BLUE ANGEL, DR CHESTNUT DIP, DR DEEP BURGUNDY, DRFF4/COPPER BALAYAGE, DRFF4/HONEY AUBURN, DRFF4/ROSE BROWN, LR8/HONEY ASH BLONDE, LR613/HEAVENLY PINK



13" X 6"





COLOR SHOWN : 1B



COLOR SHOWN : SAKURA BLOSSOM



COLOR SHOWN : DRST RED VELVET

Lace Front
PERFECT HAIRLINE™

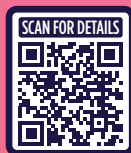
FULLY HAND-TIED 13"X6" LACE WIG

Captivate everyone's attention when you wear the new Kashia wig. This unit has 22" curls and 13" x 6" lace area!

Reinvent yourself this fall with Weslyn and Anycia. These styles feature loose curls and waves that are available in a variety of shades from basic to bold.

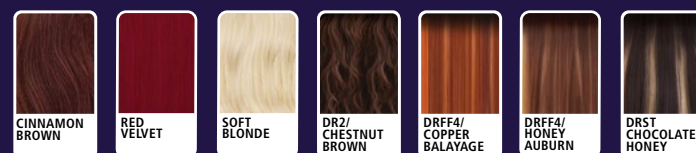
- Fully Hand-Tied 13" x 6" Frontal
- Ear-to-Ear Soft HD Transparent Lace
- Natural Baby Hairs
- Comes With a Pre-Attached Elastic Band
- Fast, Easy & Effortless Glueless Installs
- Pre-Plucked Hairline
- Heat-Styling Friendly

KASHIA 22"



COLOR SHOWN : DR2/CHESTNUT BROWN, RED VELVET, 1B, 1B (LEFT TO RIGHT)

AVAILABLE COLORS
1, 1B, 2, CINNAMON BROWN, RED VELVET, SOFT BLONDE, DR2/CHESTNUT BROWN, DRFF4/COPPER BALAYAGE, DRFF4/HONEY AUBURN, DRST CHOCOLATE HONEY

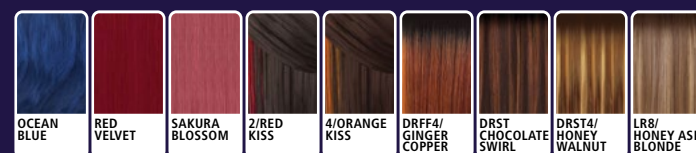


WESLYN 22"

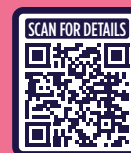


COLOR SHOWN : 2/RED KISS, DRST CHOCOLATE SWIRL, SAKURA BLOSSOM, SAKURA BLOSSOM (LEFT TO RIGHT)

AVAILABLE COLORS
1, 1B, 2, OCEAN BLUE, RED VELVET, SAKURA BLOSSOM, 2/RED KISS, 4/ORANGE KISS, DRFF4/GINGER COPPER, DRST CHOCOLATE SWIRL, DRST4/HONEY WALNUT, LR8/HONEY ASH BLONDE



ANYCIA 26"



COLOR SHOWN : WARM APRICOT, DRST2/ROSE BROWN, DRST RED VELVET, DRST RED VELVET (LEFT TO RIGHT)

AVAILABLE COLORS
1, 1B, 2, CHOCOLATE SWIRL, DARK VIOLET, TIRAMISU, WARM APRICOT, DR COPPER BROWN, DR2/CREAMY TOFFEE, DRST JADE BLUE, DRST RED VELVET, DRST2/ROSE BROWN



13" X 6"





COLOR SHOWN : DR2/CHERRY SUNRISE



COLOR SHOWN : DRF GINGER VANILLA KISS



COLOR SHOWN : DARK VIOLET

melted HAIRLINE®

LACE FRONT WIG

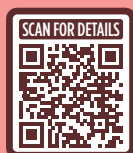
Laila is a long look with an extra kick! This bone-straight 28" style is finished with razor-cut layers and features pre-styled, half-moon bangs.

In the mood to add some trendy 70's flair to your style? Then Mandisa's feathered layers were made just for you

You can change your mind all the time with Matilda! Wear it with pre-styled bangs or without, half up/half down, or try the fun, and daring color options.

- Soft HD Transparent Lace
- 5" Deep Parting
- Completely Pre-Plucked Hairline & Sideburns
- Pre-Attached Wide Elastic Band for Secure Fit
- Fast, Easy & Effortless Glueless Installs
- Natural Baby Hairs
- Redesigned ComfortFit Ear Contour
- Heat Resistant Fiber

LAILA 28"



COLOR SHOWN : CREAM SODA, DRF HOT PINK, DR2/CHERRY SUNRISE, DR2/CHERRY SUNRISE (LEFT TO RIGHT)

AVAILABLE COLORS
1, 1B, 2, CHOCOLATE SWIRL, CREAM SODA, DARK VIOLET, DEEP BURGUNDY, JADE BLUE, WARM APRICOT, DR2/CHERRY SUNRISE, DR2/CREAMY TOFFEE, DRF HOT PINK



MANDISA 24"



COLOR SHOWN : DR2/CREAMY TOFFEE, DRST2/ROSE BROWN, DRF GINGER VANILLA KISS, DRF GINGER VANILLA KISS (LEFT TO RIGHT)

AVAILABLE COLORS
1, 1B, 2, 4/PEEKA 2730, CHOCOLATE SWIRL, DARK VIOLET, TIRAMISU, WARM APRICOT, DR2/CREAMY TOFFEE, DRF GINGER VANILLA KISS, DRST RED VELVET, DRST2/ROSE BROWN



MATILDA 26"



COLOR SHOWN : DEEP BURGUNDY, DR4/ASH BROWN, DARK VIOLET, DARK VIOLET (LEFT TO RIGHT)

AVAILABLE COLORS
1, 1B, 2, CHOCOLATE SWIRL, DARK VIOLET, DEEP BURGUNDY, GINGER BROWN, TIRAMISU, WARM APRICOT, DR2/CREAMY TOFFEE, DR4/ASH BROWN, DRF HOT PINK





COLOR SHOWN : DR4/BL SOFT BLONDE



COLOR SHOWN : DRFF CHERRY CRUSH



COLOR SHOWN : DRFF2/HONEY AMBER BROWN

melted HAIRLINE®

LACE FRONT WIG

Leave the hot tools in the drawer! Elianne's wand curls are gorgeous and ready-to-wear.

When we made Madina, we had 3 things in mind: a flawless hairline, on-trend curtain bangs, and luscious length.

If you've ever envied girls with perfect salon-styled curls and pricey highlights, then get Ivara!

- Soft HD Transparent Lace
- 5" Deep Parting
- Completely Pre-Plucked Hairline & Sideburns
- Pre-Attached Wide Elastic Band for Secure Fit
- Fast, Easy & Effortless Glueless Installs
- Natural Baby Hairs
- Redesigned ComfortFit Ear Contour
- Heat Resistant Fiber

ELIANNE 22"



COLOR SHOWN : DRST4/GINGER SPICE, ASH BROWN, DRST4/GINGER SPICE, DRST4/GINGER SPICE (LEFT TO RIGHT)

AVAILABLE COLORS
1, 1B, 2, ASH BROWN, GOLDEN AMBER, TIRAMISU, DR BROWN SUGAR SWIRL, DR RAGING RED, DR4/BL SOFT BLONDE, DRST4/GINGER SPICE



MADINA 32"



COLOR SHOWN : COPPER BLONDE, DRFF2 /FUDGE SUNDAE, DRFF CHERRY CRUSH, DRFF CHERRY CRUSH (LEFT TO RIGHT)

AVAILABLE COLORS
1, 1B, 2, COPPER BLONDE, DARK VIOLET, GINGER BROWN, TIRAMISU, DRFF CHERRY CRUSH, DRF HOT PINK, DRFF2/FUDGE SUNDAE, DRST2/CHOCOLATE CARAMEL

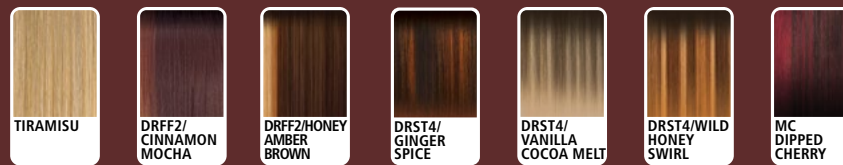


IVARA 24"



COLOR SHOWN : DRST4/VANILLA COCOA MELT, MC DIPPED CHERRY, DRFF2/HONEY AMBER BROWN, DRFF2/HONEY AMBER BROWN (LEFT TO RIGHT)

AVAILABLE COLORS
1, 1B, 2, TIRAMISU, DRFF2/CINNAMON MOCHA, DRFF2/HONEY AMBER BROWN, DRST4/GINGER SPICE, DRST4/VANILLA COCOA MELT, DRST4/WILD HONEY SWIRL, MC DIPPED CHERRY





COLOR SHOWN : WARM APRICOT



COLOR SHOWN : FROSTED ASH BLONDE



COLOR SHOWN : FF 1B/DIPPED BLONDE

melted HAIRLINE®

LACE FRONT WIG

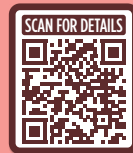
Update your office style with Madelyn - featuring a sassy but classy flipped, face-framing fringe and multiple layers.

Primrose is a new flirty bob featuring flipped, face-framing layers.

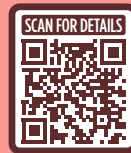
Calling all color fanatics! Presley's side-swept bangs and long layered cut include creative color combos like Warm Apricot, Jade Blue, and Dipped Blonde.

- Soft HD Transparent Lace
- 5" Deep Parting
- Completely Pre-Plucked Hairline & Sideburns
- Pre-Attached Wide Elastic Band for Secure Fit
- Fast, Easy & Effortless Glueless Installs
- Natural Baby Hairs
- Redesigned ComfortFit Ear Contour
- Heat Resistant Fiber

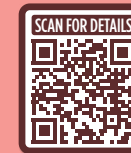
MADELYN 20"



PRIMROSE 12"



PRESLEY 24"



COLOR SHOWN : DRST RED VELVET, DRST2/ROSE BROWN, WARM APRICOT, WARM APRICOT (LEFT TO RIGHT)



COLOR SHOWN : DR2/CHOCOLATE SWIRL, GINGER AUBURN, FROSTED ASH BLONDE, FROSTED ASH BLONDE (LEFT TO RIGHT)



COLOR SHOWN : FF 1B/DIPPED BLONDE, DRST JADE BLUE, DRST2/ROSE BROWN, DRST2/ROSE BROWN (LEFT TO RIGHT)

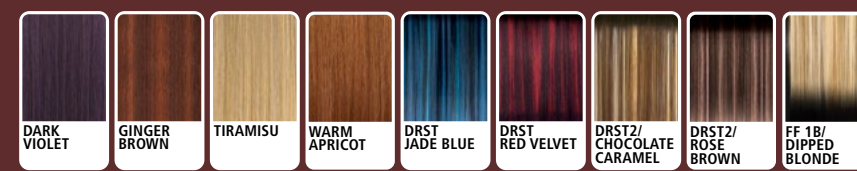
AVAILABLE COLORS
1, 1B, 2, CHOCOLATE SWIRL, DARK VIOLET, GINGER BROWN, TIRAMISU, WARM APRICOT, DR2/CREAMY TOFFEE, DRST JADE BLUE, DRST RED VELVET, DRST2/ROSE BROWN



AVAILABLE COLORS
1, 1B, 2, BURGUNDY, FROSTED ASH BLONDE, GINGER AUBURN, GOLDEN AMBER, DR GINGER TOFFEE, DR2/CHOCOLATE SWIRL, DR4/GOLDEN HONEY BLONDE



AVAILABLE COLORS
1, 1B, 2, DARK VIOLET, GINGER BROWN, TIRAMISU, WARM APRICOT, DRST JADE BLUE, DRST RED VELVET, DRST2/CHOCOLATE CARAMEL, DRST2/ROSE BROWN, FF 1B/DIPPED BLONDE





COLOR BOMB®

PREMIUM SYNTHETIC FIBERS

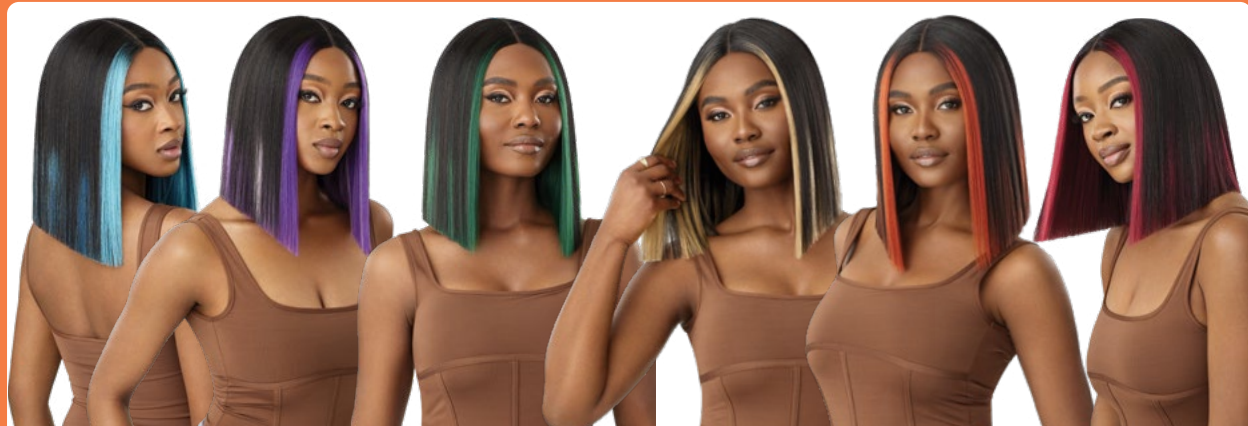
If you prefer bold colors over 1B, then you've gotta get Gala! This sharp-cut bob comes in a variety of dazzling shades.

- Face-Framing Highlights with Peekaboo Colored Tips
- Pre-Plucked HD Transparent Lace
- Natural Baby Hair
- Selfie-Worthy Styles
- Pre-Attached Wide Elastic Band for Secure Fit
- Fast, Easy & Effortless Glueless Installs
- Premium Synthetic Fibers



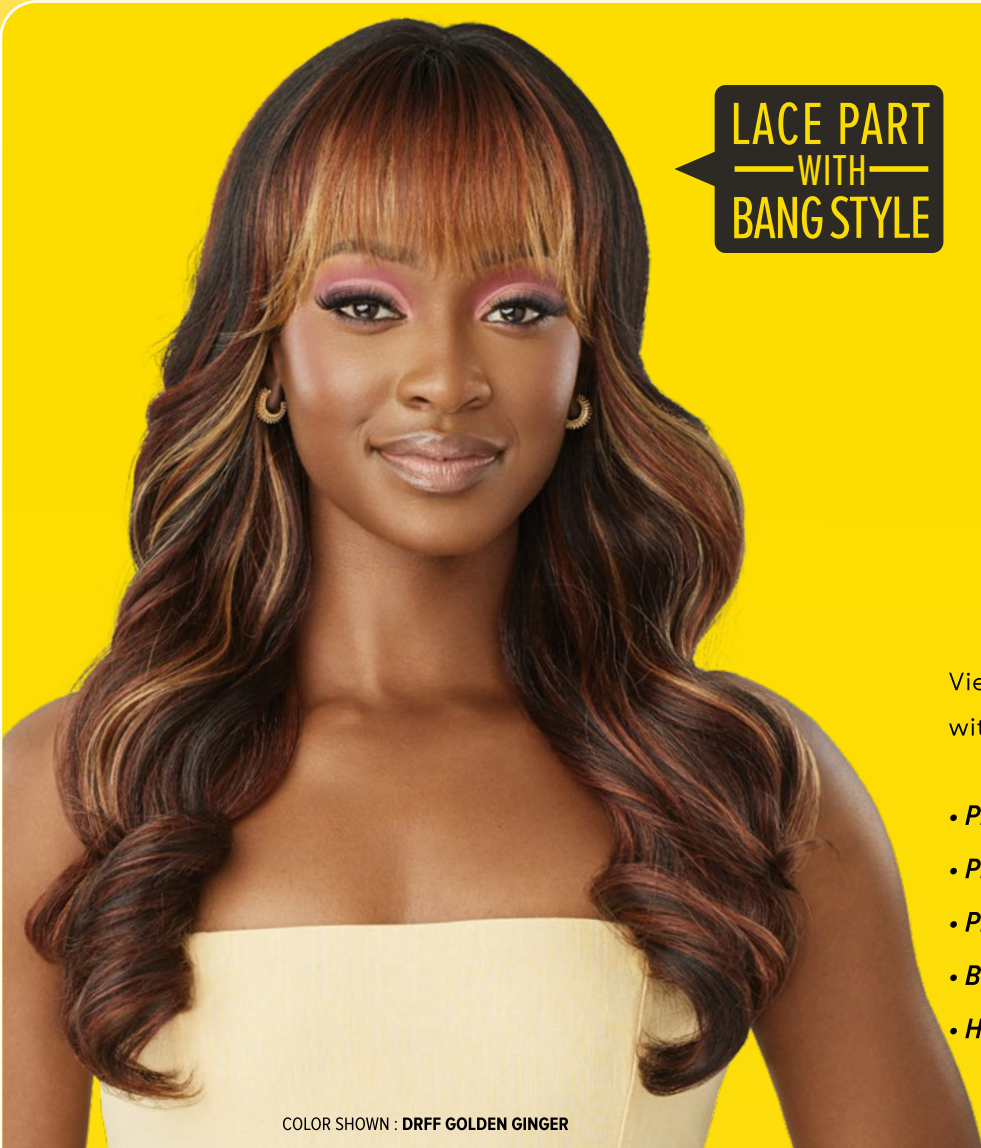
COLOR SHOWN : DRFF ELECTRIC PINK

GALA 12"



COLOR SHOWN : DRFF AQUA BLUE, DRFF VIOLET, DRFF FOREST GREEN, DRFF HONEYCOMB, DRFF FIRE ORANGE, DRFF BERRY RED (LEFT TO RIGHT)

AVAILABLE COLORS
1, 1B, DRFF AQUA BLUE, DRFF BERRY RED, DRFF ELECTRIC PINK, DRFF FIRE ORANGE, DRFF FOREST GREEN, DRFF HONEYCOMB, DRFF VIOLET



LACE PART WITH BANG STYLE



View Vale at any angle! This lace-part wig with bangs will still look realistic.

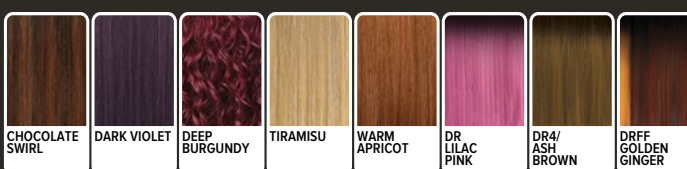
- Premium Synthetic Fibers
- Pre-Plucked & Hand-Tied Lace I-Part
- Pre-Attached Wide Elastic Band for a Secure Fit
- Breathable Mesh Cap
- Heat-Styling Friendly

VALE 22"



COLOR SHOWN : DR LILAC PINK, DRFF GOLDEN GINGER, DRFF GOLDEN GINGER (LEFT TO RIGHT)

AVAILABLE COLORS
1, 1B, 2, CHOCOLATE SWIRL, DARK VIOLET, DEEP BURGUNDY, TIRAMISU, WARM APRICOT, DR LILAC PINK, DR4/ASH BROWN, DRFF GOLDEN GINGER



Fab & Fly™

100% UNPROCESSED HUMAN HAIR

Radiate effortless elegance in the HH-Alara, jaw-length curly bob with bangs.

- 100% Unprocessed Human Hair
- Breathable Mesh Cap
- Comfortable & Secure Fit
- Voluminous & Full
- Easy-to-Wear & Style
- Bleach & Dye Friendly



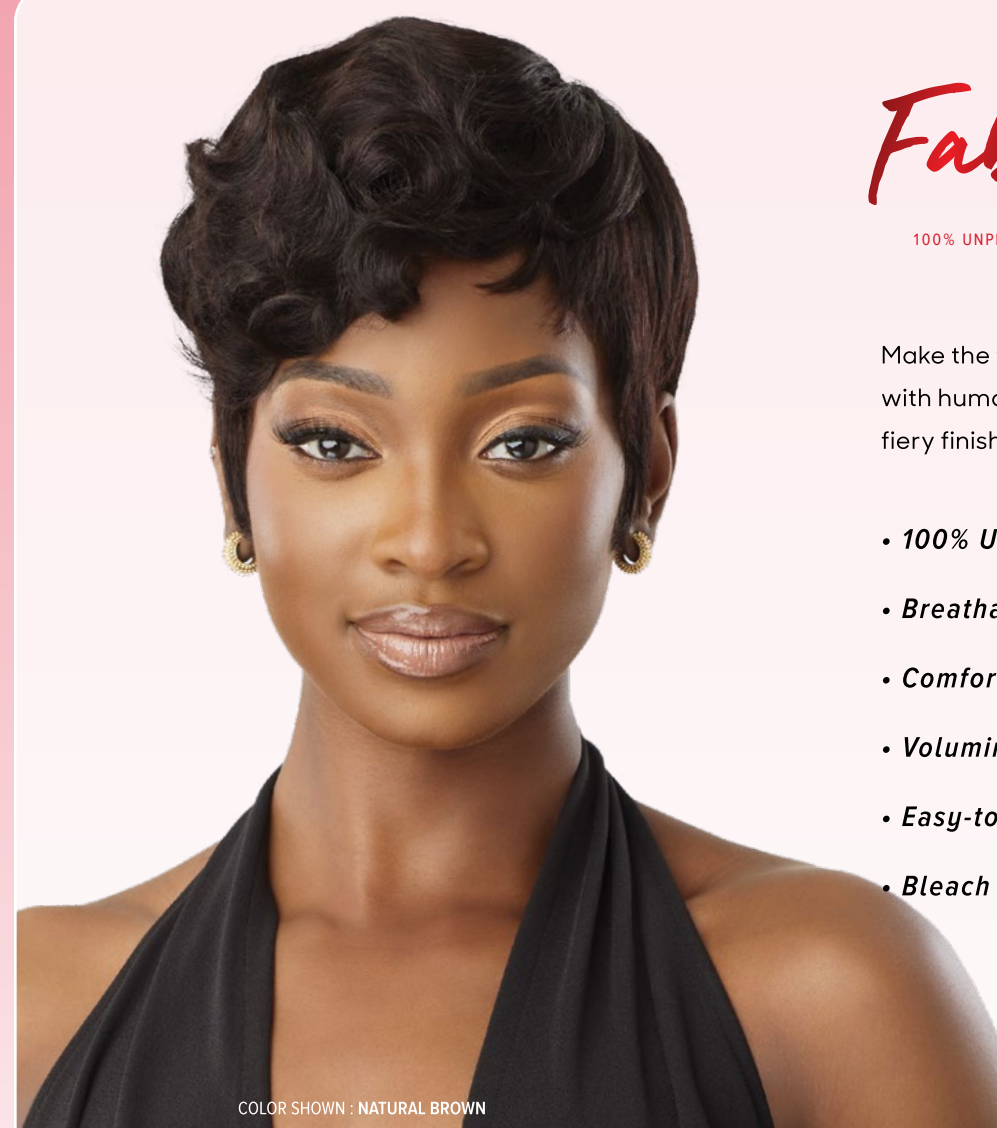
COLOR SHOWN : NATURAL BROWN

Fab & Fly™

100% UNPROCESSED HUMAN HAIR

Make the temperature rise in any room you enter with human hair, Riri. This pixie cut is the perfect fiery finish to any look.

- 100% Unprocessed Human Hair
- Breathable Mesh Cap
- Comfortable & Secure Fit
- Voluminous & Full
- Easy-to-Wear & Style
- Bleach & Dye Friendly



COLOR SHOWN : NATURAL BROWN

HH-ALARA



COLOR SHOWN : NATURAL BROWN, NATURAL BROWN, NATURAL BROWN (LEFT TO RIGHT)

AVAILABLE COLORS
NATURAL BLACK,
NATURAL BROWN



HH-RIRI



COLOR SHOWN : NATURAL BROWN, NATURAL BROWN, NATURAL BROWN (LEFT TO RIGHT)

AVAILABLE COLORS
NATURAL BLACK,
NATURAL BROWN



✓ Bleach ✓ Dye ✓ Customize

✓ Bleach ✓ Dye ✓ Customize

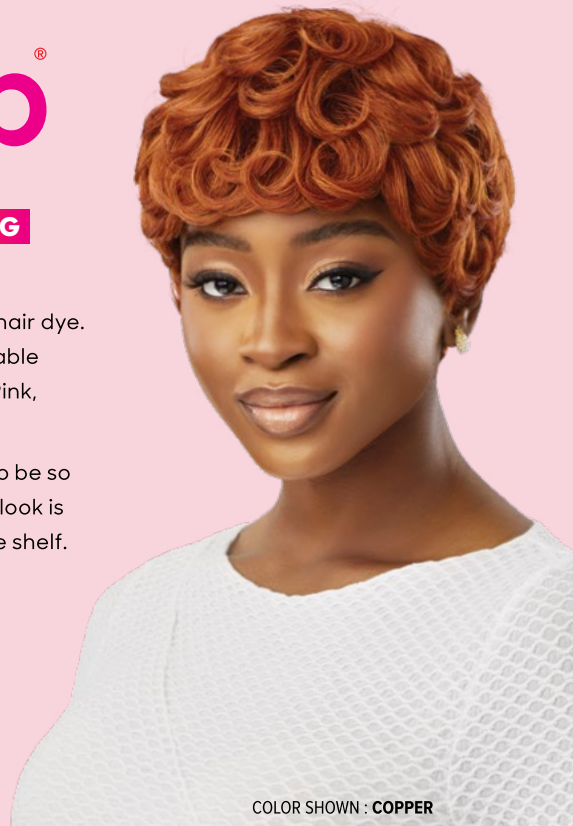
wigpop®

SYNTHETIC FULL WIG

Skip the big chop, curling iron, and hair dye. Dale is a ready-to-wear pixie available in colors like Midnight Blue, Rouge Pink, Copper, and more

The new Jo style seems too sultry to be so easy to wear. This pop-on-and-go look is the fastest, sassiest short cut on the shelf.

- Great Value
- Ready to Wear & Go
- Range of Trendy Colors & Styles
- Heat-Styling Friendly



COLOR SHOWN : COPPER



COLOR SHOWN : MIDNIGHT BLUE



COLOR SHOWN : ROUGE PINK, COPPER, COPPER (LEFT TO RIGHT)

AVAILABLE COLORS

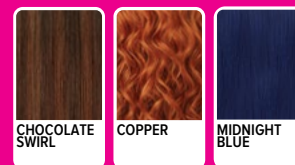
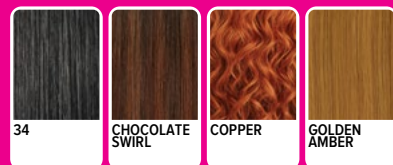
1, 1B, 2, 34, CHOCOLATE SWIRL, COPPER, GOLDEN AMBER, HAVANA BROWN, MIDNIGHT BLUE, RED VELVET, ROUGE PINK, SOFT BLONDE



COLOR SHOWN : DR4/CREAMY TOFFEE, MIDNIGHT BLUE, MIDNIGHT BLUE (LEFT TO RIGHT)

AVAILABLE COLORS

1, 1B, 2, CHOCOLATE SWIRL, COPPER, MIDNIGHT BLUE, RED VELVET, SOFT BLONDE, DR4/CREAMY TOFFEE, DR99J/ROSY SPICE



COLOR SHOWN : DEEP AUBURN

wigpop®

SYNTHETIC FULL WIG



Luiza is our new leveled-up style. The special parting space feature adds a boost to this softly curled bob with wispy bangs.

- Easy to Wear, Elevated Looks
- Special Styles: More curls, more textures, more length
- Ready to Wear & Go
- Heat-Styling Friendly

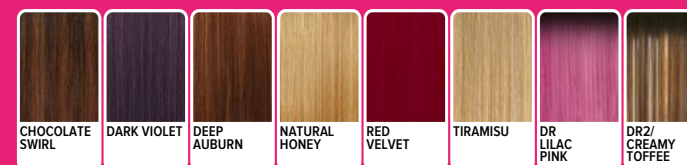
LUIZA 12"



COLOR SHOWN : DR LILAC PINK, DEEP AUBURN, DEEP AUBURN (LEFT TO RIGHT)

AVAILABLE COLORS

1, 1B, 2, CHOCOLATE SWIRL, DARK VIOLET, DEEP AUBURN, NATURAL HONEY, RED VELVET, TIRAMISU, DR LILAC PINK, DR2/CREAMY TOFFEE



WET & WAVY MULTI PACK



W&W SPANISH CURL
NATURAL

AVAILABLE COLORS **NATURAL BLACK, NATURAL**

AVAILABLE LENGTHS
10", 12", 14" | 14", 16", 18" | 18", 20", 22"
22", 24", 26" | 26", 28", 30"



W&W GYPSY DEEP
NATURAL BLACK

AVAILABLE COLORS **NATURAL BLACK, NATURAL**

AVAILABLE LENGTHS
10", 12", 14" | 14", 16", 18" | 18", 20", 22"
22", 24", 26" | 26", 28", 30"

Sugar Punch™



100% UNPROCESSED REMY HUMAN HAIR

Keep your curls fresh and poppin' with SUGARPUNCH! These full packs of top-quality, wet & wavy curly styles will look flawless through multiple wears and washes.

- 100% Unprocessed Remy Human Hair
- Double Drawn for Thick, Lush Ends
- One Directional Cuticles for Tangle Resistance
- Smooth, Resilient Hair & Long-Lasting Bundles
- Bleach & Dye, Wash & Reuse
- No Shedding



Remy

DOUBLE DRAWN
FOR FULL, THICK ENDS
Smooth, Resilient STRANDS

WET & WAVY MULTI PACK 3PCS

AVAILABLE STYLES :
W&W GYPSY DEEP, W&W SPANISH CURL
AVAILABLE COLORS :
NATURAL BLACK, NATURAL
AVAILABLE LENGTHS :
10", 12", 14" / 14", 16", 18" / 18", 20", 22"
22", 24", 26" / 26", 28", 30"



WET & WAVY

COLOR SHOWN : NATURAL BLACK

W&W GYPSY DEEP

MULTI PACK

AVAILABLE COLOR
NATURAL BLACK, NATURAL



WET & WAVY

COLOR SHOWN : NATURAL

W&W SPANISH CURL

MULTI PACK

AVAILABLE COLOR
NATURAL BLACK, NATURAL



COLOR SHOWN : NATURAL

STRAIGHT

SINGLE PACK, MULTI PACK,
4"X4" & 13"X4" CLOSURE
AVAILABLE COLOR
NATURAL BLACK, NATURAL

Sugar Punch™

100% UNPROCESSED REMY HUMAN HAIR

DOUBLE DRAWN
FOR FULL, THICK ENDS
Smooth, Resilient STRANDS

KEY FEATURES

- 100% Unprocessed Remy Human Hair
- 4"x4" HD Transparent Lace Closure
- Double Drawn Process with Cuticle Retained Strands
- Thick, Lush, Tangle-Free Ends
- Smooth, Resilient Hair & Long-Lasting Bundles
- One Directional Strands for More Tangle Resistance
- Pre-Plucked Hairline & Natural-Looking Baby Hair
- Bleach / Dye / Customize
- No Shedding

SINGLE PACK



STRAIGHT BODY DEEP OCEAN BOHEMIAN

AVAILABLE LENGTHS :
10", 12", 14", 16", 18", 20", 22", 24"

AVAILABLE COLORS :
NATURAL BLACK, NATURAL

MULTI PACK



STRAIGHT BODY

AVAILABLE LENGTHS :
10", 12", 14" / 12", 14", 16", 18" / 14", 16", 18" / 16", 18", 20" / 18", 20", 22" / 20", 22", 24" / 22", 24", 26" / 26", 28", 30"

AVAILABLE COLORS :
NATURAL BLACK, NATURAL

MULTI PACK **WET & WAVY**



W&W GYPSY DEEP W&W SPANISH CURL

AVAILABLE LENGTHS :
10", 12", 14" / 14", 16", 18" / 18", 20", 22" / 22", 24", 26" / 26", 28", 30"

AVAILABLE COLORS :
NATURAL BLACK, NATURAL



COLOR SHOWN : NATURAL BLACK

BODY

SINGLE PACK, MULTI PACK,
4"X4" & 13"X4" CLOSURE
AVAILABLE COLOR
NATURAL BLACK, NATURAL



COLOR SHOWN : NATURAL

OCEAN

SINGLE PACK, 4"X4" CLOSURE
AVAILABLE COLOR
NATURAL BLACK, NATURAL



COLOR SHOWN : NATURAL

BOHEMIAN

SINGLE PACK, 4"X4" CLOSURE
AVAILABLE COLOR
NATURAL BLACK, NATURAL



COLOR SHOWN : NATURAL BLACK

DEEP

SINGLE PACK, 4"X4" CLOSURE
AVAILABLE COLOR
NATURAL BLACK, NATURAL

4"X4" LACE CLOSURE



STRAIGHT BODY DEEP OCEAN BOHEMIAN

AVAILABLE LENGTHS : 10", 12", 14" | AVAILABLE COLORS : NATURAL BLACK, NATURAL

13"X4" LACE FRONTAL



STRAIGHT BODY

Best COMBINATION FOR

HOW TO
CREATE
BOHO BOX
BRAIDS



BOHO BRAIDS



X-Pression®



My TRESSES
100% UNPROCESSED HUMAN HAIR
GOLD LABEL

BULK
PRE-STRETCHED
100% UNPROCESSED HUMAN HAIR BULK



MYTRESSES GOLD BULK_AVAILABLE STYLES
NATURAL DEEP BULK, LOOSE DEEP BULK,
NATURAL STRAIGHT BULK, NATURAL BODY BULK,
GYPSY WAVE BULK, NATURAL 4C KINKY BULK 12",
W&W SPLASH DEEP BULK, W&W SPLASH CORK BULK

