

NOVEMBER 2022

Outre®



STYLE & COLOR SHOWN:

PERFECT HAIRLINE 13X4_BLAZE | 3DRB COFFEE CREAM (LEFT)
PERFECT HAIRLINE 13X4_LUXY | DR4/GOLDEN HONEY BLONDE (RIGHT)

**FRESH STYLES FOR FALL
FROM FAN-FAVORITE BRANDS**

*CHECK OUT OUTRE 360 LACE FRONTAL, PERFECT HAIRLINE, OUTRE
LACEFRONT DELUXE & BRAID LACE WIG INSIDE!*

IN THIS ISSUE

Lacefront Perfect Hairline is your most natural-looking wig yet. Featuring a fully hand-tied 13" x 6" frontal and pre-plucked strands, this unit offers a picture perfect hairline and the parting versatility customers have been looking for.

Designed to be ready-to-wear and easy-to-style, all they have to do is cut the lace.

DRAWSTRING PONY Lil Looks DRAWSTRING PONYTAIL	03 BEADED TWISTS 12"	YAKI OUTRE YAKI	04 YAKI ITEMS	HH-BUNDLE My TRESSES 100% UNPROCESSED HUMAN HAIR	06 MYTRESSES BUNDLE ITEMS	MULTI BLEND BUNDLE Batik PREMIUM MULTI BLEND	08 BODY 18"20"22" DEEP 18"20"22" STRAIGHT 18"20"22" + 4X4 HD LACE CLOSURE
LACE WIG PERFECT HAIRLINE	10 13X4 BLAZE 13X4 LUXY	LACE WIG SleekLay Part	12 SHALINI ZAYLEE JOANNA LARISSA	LACE WIG SleekLay Part	14 FLARA OSIANNA EMERALDA	LACE WIG Outre LACE FRONT DELUXE	16 AVALON ELYA
LACE WIG Lace front	18 KAYA TALULA	LACE WIG EveryWear	19 EVERY23	LACE PART WIG THE DAILY WIG LACE PART WIG	20 DAZZLIN FLORIS WAVERLY STERLING	FULL WIG wigpop SYNTHETIC FULL WIG	22 BRYNLEE
CONVERTI CAP converticap	23 KISSED BY MIST	CATALOG Outre 360 13x6	24	CATALOG PERFECT HAIRLINE	28	CATALOG Outre LACE FRONT DELUXE	38
CATALOG BRAID LACE WIG	40						

Lil LOOKS®

100% PREMIUM SYNTHETIC FIBER

DRAWSTRING PONYTAIL

Styling is simple with Lil Looks with its pre-customized lengths for kids. Try the new and easy Beaded Twists 12" with accessories included!



COLOR SHOWN : 1B, 2T1/30 (LEFT & RIGHT)

✓ ACCESSORIES INCLUDED



BEADED TWISTS 12"

AVAILABLE COLORS

1, 1B, 2, 4, 2T1/27, 2T1/30, 2T1/BURGUNDY

KEY FEATURES

- Pre-Attached Accessories Included
- Kid-Friendly Styles, Lengths and Sizes
- Easy to Blend, Wear and Style
- Soft, Natural Textures & Lightweight
- Adjustable Drawstring
- Premium Synthetic Fiber

SPECIAL COLORS



Outre®

100% HUMAN HAIR YAKI

Say yes to the legendary Outre's human hair yaki line up ranging from Velvet Remi, Duversa, Mylk, Gem, Sasha, PNY, Premium New Yaki to Premium Purple Pack, the reliable texture that blends better without compromising quality. Boost your sales with Outre human hair yaki items.



My TRESSES

100% UNPROCESSED HUMAN HAIR

GOLD LABEL

9+ QUALITY GRADE BUNDLE HAIR



MULTI PACK



MULTI PACK

AVAILABLE STYLES : NATURAL BODY, NATURAL STRAIGHT, OCEAN BODY, BOHO DEEP

AVAILABLE COLORS: NATURAL BLACK, NATURAL BROWN

AVAILABLE LENGTH: 10", 12", 14" / 12", 14", 16" / 14", 16", 18" / 16", 18", 20" / 18", 20", 22"

SINGLE PACK



SINGLE PACK

AVAILABLE STYLES : NATURAL BODY, NATURAL STRAIGHT, OCEAN BODY, BOHO DEEP

AVAILABLE COLORS:

NATURAL BODY 10"-18": NATURAL BLACK, NATURAL BROWN, 613 / NATURAL BODY 20"-28": NATURAL BLACK, NATURAL BROWN

NATURAL STRAIGHT 10": NATURAL BLACK, NATURAL BROWN, 613, LAVENDER GRAY, SILVER GRAY

NATURAL STRAIGHT 12", 14": NATURAL BLACK, NATURAL BROWN, 613, LAVENDER GRAY, SILVER GRAY, HONEY BLONDE

NATURAL STRAIGHT 16", 18": NATURAL BLACK, NATURAL BROWN, LAVENDER GRAY, SILVER GRAY

NATURAL STRAIGHT 20"-28": NATURAL BLACK, NATURAL BROWN

BOHO DEEP 10"-22" / OCEAN BODY 10"-22": NATURAL BLACK, NATURAL BROWN

AVAILABLE LENGTH : 10", 12", 14", 16", 18", 20", 22", 24", 26", 28" / * 24", 26", 28": NATURAL BODY & NATURAL STRAIGHT ONLY

4"x4" HD LACE CLOSURE + MULTI PACK

ALL-IN-ONE BUNDLE DEAL

4"x4" HD LACE CLOSURE
USE TINT OR CONCEALER FOR A PERFECT MATCH
100% Fully HAND-TIED



AVAILABLE STYLES : NATURAL STRAIGHT, NATURAL BODY

AVAILABLE COLORS : NATURAL BLACK, NATURAL

AVAILABLE LENGTH : 10", 12", 14" / 12", 14", 16" / 14", 16", 18" / 16", 18", 20" / 18", 20", 22"

PRE-STRETCHED HUMAN HAIR BULK



AVAILABLE STYLES : NATURAL STRAIGHT BULK 18" / 24"
W&W SPLASH CORK BULK 18" / 24"
AVAILABLE COLORS : NATURAL BLACK, NATURAL
AVAILABLE LENGTHS : 18", 24"

4"x4" HD LACE CLOSURE + MULTI PACK



BEFORE WET

BEFORE WET

STYLE & COLOR SHOWN : W&W SPLASH DEEP, W&W SPLASH CORK / NATURAL BLACK (LEFT TO RIGHT)



ALL-IN-ONE BUNDLE DEAL

4"x4" HD LACE CLOSURE
USE TINT OR CONCEALER FOR A PERFECT MATCH
100% Fully HAND-TIED



AVAILABLE STYLES : W&W SPLASH DEEP, W&W SPLASH CORK
AVAILABLE COLORS : NATURAL BLACK, NATURAL
AVAILABLE LENGTH : 10", 12", 14" / 14", 16", 18" / 18", 20", 22"

My TRESSES

100% VIRGIN HUMAN HAIR

BLACK LABEL



SINGLE BUNDLE

NATURAL BODY



AVAILABLE LENGTHS:
10"-38"

NATURAL STRAIGHT



AVAILABLE LENGTHS:
10"-38"

10+ QUALITY GRADE | BLEACH / DYE / CUSTOMIZE

AVAILABLE STYLES : NATURAL STRAIGHT, NATURAL BODY

AVAILABLE COLORS : NATURAL BROWN

AVAILABLE LENGTHS : 10", 12", 14", 16", 18", 20", 22", 24", 26", 28", 30", 32", 34", 36", 38"

My TRESSES

100% UNPROCESSED HUMAN HAIR

PURPLE LABEL



NATURAL STRAIGHT

10" 12" 14", 12" 14" 16", 14" 16" 18", 18" 20" 22"

NATURAL BODY

10" 12" 14", 12" 14" 16", 14" 16" 18", 18" 20" 22"

NATURAL CRYSTAL DEEP

10" 12" 14", 14" 16" 18"

NATURAL PASSION WAVE

10" 12" 14", 14" 16" 18"

NATURAL ROYAL JERRY

10" 12" 14", 14" 16" 18"



BLEACH / DYE / CUSTOMIZE
ALL-IN-ONE BUNDLE DEAL

AVAILABLE STYLES : NATURAL STRAIGHT, NATURAL BODY, NATURAL CRYSTAL DEEP, NATURAL PASSION WAVE, NATURAL ROYAL JERRY

AVAILABLE COLORS : NATURAL BLACK, NATURAL, NATURAL BROWN

AVAILABLE LENGTHS : 10", 12", 14" / 12", 14", 16" / 14", 16", 18" / 18", 20", 22" (NATURAL STRAIGHT, NATURAL BODY)
10", 12", 14" / 14", 16", 18" (NATURAL CRYSTAL DEEP, NATURAL PASSION WAVE, NATURAL ROYAL JERRY)

My TRESSES

100% UNPROCESSED HUMAN HAIR

GOLD LABEL

BLOWOUT collection



BLOWOUT RELAXED

AVAILABLE LENGTH : 22"
AVAILABLE COLORS : NATURAL BROWN

BLOWOUT STRAIGHT

AVAILABLE LENGTH : 10", 12"
AVAILABLE COLORS : NATURAL BLACK, NATURAL BROWN (10")
NATURAL BROWN (12")

FLEXI ROD-LARGE

AVAILABLE LENGTH : 18", 20"
AVAILABLE COLORS : NATURAL BLACK (18")
NATURAL BROWN (20")

FLEXI ROD-MEDIUM

AVAILABLE LENGTH : 18", 20", 22"
AVAILABLE COLORS : NATURAL BLACK, NATURAL BROWN

FLEXI ROD-SMALL

AVAILABLE LENGTH : 18", 20", 22"
AVAILABLE COLORS : NATURAL BLACK, NATURAL BROWN



COLOR SHOWN : NATURAL BLACK



COLOR SHOWN : NATURAL BLACK



COLOR SHOWN : DR27

Batik®

PREMIUM MULTI BLEND

**3 pcs Multi Pack +
4X4 HD Lace Closure!**

Batik now has an one-pack solution! Get a 4"x4" HD closure and 3 bundles of multi-blend fiber that's luscious, resilient, and tangle-free.

- Premium Multi-Blend
- Free 4"x4" HD Hand-Tied Lace Closure
- 3 Full Bundles
- Tangle-Free & Shed-Free
- Heat Styling Safe - Up to 400°



DEEP 18"/20"/22"

BODY 18"/20"/22"

STRAIGHT 18"/20"/22"

KEY FEATURES

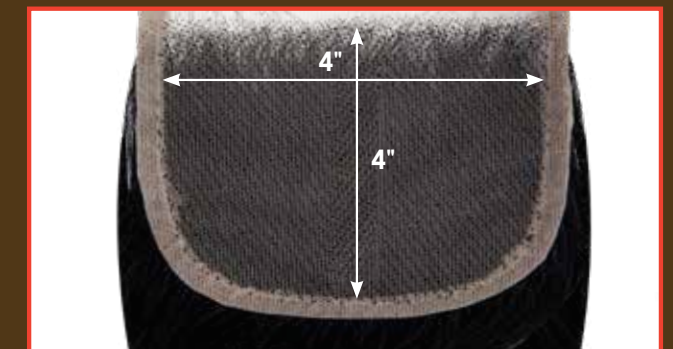
- Premium Multi-Blend
- Free 4"x4" HD Hand-Tied Lace Closure
- 3 Full Bundles
- Tangle-Free & Shed-Free
- Heat Styling Safe - Up to 400°

AVAILABLE COLORS

JET BLACK, NATURAL BLACK,
27, 30, 613, DR27, DR30

1 PACK SOLUTION

4" x 4" Free HD LACE CLOSURE





PERFECT HAIRLINE™

FULLY HAND-TIED LACE WIG

Blaze, a new head-turning pixie style, features a 13"x4" HD lace frontal for a natural finish and plenty of parting versatility!

Luxy is a pixie with elegance! This chic short cut has long swooped bangs with a 13"x4" HD lace frontal for multiple parting options.

- Fully Hand-Tied 13" x 4" Frontal
- Ear-to-Ear Soft HD Transparent Lace
- Natural Baby Hairs
- Comes With A Pre-Attached Elastic Band
- Pre-Plucked Hairline
- Heat-Styling Friendly



BLAZE 13" X 4"

LUXY 13" X 4"

AVAILABLE COLORS : **BLAZE & LUXY** : 1, 1B, 2, 613, RED VELVET, DR4/GOLDEN HONEY BLONDE, DRB GOLDEN GINGER, 3DRB COFFEE CREAM

COLOR SHOWN : DRB GOLDEN GINGER (MAIN), 3DRB COFFEE CREAM, RED VELVET (BOTTOM LEFT TO RIGHT)

COLOR SHOWN : DR4/GOLDEN HONEY BLONDE (MAIN), 1B, DRB GOLDEN GINGER (BOTTOM LEFT TO RIGHT)

SPECIAL COLORS



SleekLay[®] LACE FRONT WIG Part

Shake things up with Shalini's pretty curls paired with custom colors and the signature Sleeklay part.

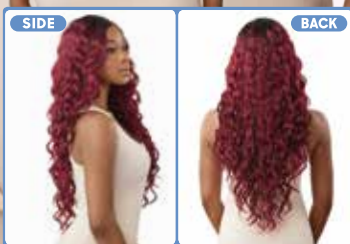
For the girls that want plenty of curls in special colors, get Zaylee! It's a style that pops with a part that lays flat.

Joanna and Larissa have it all -- trendy soft wave styles, so many colors options, and a hump-less, sleek part!

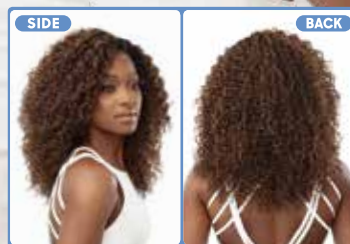
- Wider Hand-Tied Lace Part
- Extra Hand-Tied Lace Edges
- Pre-Plucked Hairline
- Natural Baby Hairs
- Hump-less, Laid finish
- Heat-Friendly



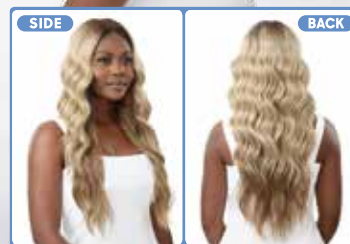
COLOR SHOWN :
DR RED VELVET (TOP)
DRFF CHOCOLATE TRUFFLE (BOTTOM)



COLOR SHOWN :
DR CHOCOLATE SWIRL (TOP)
DRFF GOLDEN AMBER (BOTTOM)



COLOR SHOWN :
DR4/BL SANDY BLONDE (TOP)
DRFF2/GINGER COPPER (BOTTOM)



COLOR SHOWN :
DRFF CHOCOLATE TOFFEE (LEFT)
DRFF GOLDEN AMBER (RIGHT)



SHALINI 28"

ZAYLEE 16"

JOANNA 26"

LARISSA 28"

AVAILABLE COLORS :

SHALINI : 1, 1B, 2, 613, DR RED VELVET, DR2/CINNAMON SPICE, DR4/BL GOLDEN HONEY, DR4/COPPER GOLD, DRFF CARAMEL MOCHA, DRFF CHOCOLATE TRUFFLE

ZAYLEE : 1, 1B, 2, 4, 613, DR CHOCOLATE SWIRL, DR2/CINNAMON WINE, DR2/GINGER BROWN, DR4/GOLDEN HONEY BLONDE, DRFF GOLDEN AMBER

JOANNA : 1, 1B, 2, 613, DR CHOCOLATE SWIRL, DR4/BL SANDY BLONDE, DR4/GOLDEN AMBER, DRFF BLACK CHERRY, DRFF HONEY BROWN, DRFF2/GINGER COPPER

LARISSA : 1, 1B, 2, 613, DR4/GOLDEN HONEY BLONDE, DRFF CHOCOLATE TOFFEE, DRFF GOLDEN AMBER, DRFF RED VELVET, DRFF2/GINGER BROWN

SPECIAL COLORS



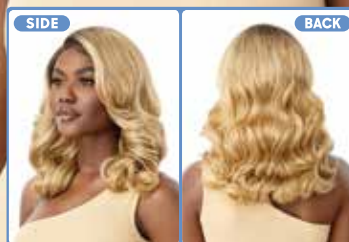
SleekLay[®] LACE FRONT WIG Part

Get curls, waves and a deep-c lace part that lays with the new Flara, Osianna, and Emeraldalda styles.

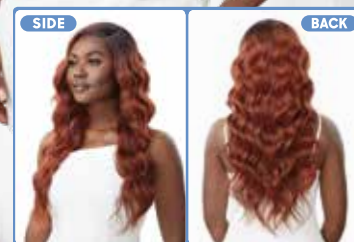
- Wider Hand-Tied Lace Part
- Deep C-Shape Side Parting
- Extra Hand-Tied Lace Edges
- Hump-Less, Laid finish
- Pre-Plucked Hairline
- Natural Baby Hairs
- Heat-Friendly



COLOR SHOWN :
DRFF4/CHAMPAGNE (TOP)
DRFF SUNKISS BROWN (BOTTOM)



COLOR SHOWN :
DR2/CINNAMON SPICE (TOP)
DR4/CREAM BLONDE (BOTTOM)



COLOR SHOWN :
DRFF SUNKISS BROWN (LEFT)
DRFF2/GINGER COPPER (RIGHT)



FLARA 16"

OSIANNA 26"

EMERALDALDA 18"

AVAILABLE COLORS :

FLARA : 1, 1B, 2, DR CHOCOLATE SWIRL, DR4/STRAWBERRY BLONDE, DRFF BLACK CHERRY, DRFF SUNKISS BROWN, DRFF2/GINGER COPPER, DRFF4/CHAMPAGNE

OSIANNA : 1, 1B, 2, 613, DR CHOCOLATE SWIRL, DR2/CINNAMON SPICE, DR4/CREAM BLONDE, DRFF BLACK CHERRY, DRFF HONEY BROWN

EMERALDALDA : 1, 1B, 2, DR CHOCOLATE SWIRL, DR2/GOLDEN HONEY BLONDE, DR4/STRAWBERRY BLONDE, DRFF BLACK CHERRY, DRFF SUNKISS BROWN, DRFF2/GINGER COPPER

SPECIAL COLORS



DR CHOCOLATE SWIRL | DR2/CINNAMON SPICE | DR2/GOLDEN HONEY BLONDE | DR4/CREAM BLONDE | DR4/STRAWBERRY BLONDE | DRFF BLACK CHERRY | DRFF HONEY BROWN | DRFF SUNKISS BROWN | DRFF2/GINGER COPPER | DRFF4/CHAMPAGNE

Outre®

LACE FRONT DELUXE

PREMIUM SYNTHETIC FIBER

Everyone's looking for the perfect fall unit! Avalon has gorgeous, autumn colors like Cinnamon Spice paired with pretty wand curls and deeper hand-tied edges.

Get extra-natural edges, salon-quality highlights, and a sexy sleek style. Elya has it all, including a little more lace at the front hairline and part for a more realistic look.

- Ear-to-Ear HD Transparent Lace
- Deeper Pre-Plucked, Hand-Tied Lace Edges
- 5" Deep Lace Parting
- Natural Baby Hairs
- Heat Resistant



COLOR SHOWN :
DRFF CHOCOLATE TRUFFLE (LEFT),
DR2/CINNAMON SPICE (RIGHT)



AVALON 26"



AVAILABLE COLORS :

AVALON: 1, 1B, 2, 613, DR RED VELVET, DR2/CINNAMON SPICE, DR4/BL GOLDEN HONEY, DR4/SANDY BLONDE, DRFF CHOCOLATE TRUFFLE, DRFF HAZELNUT

ELYA: 1, 1B, 2, 613, DR4/GOLDEN HONEY BLONDE, DRST2/CHOCOLATE CARAMEL, DRFF GOLDEN AMBER, DRFF RED VELVET, DRFF2/GINGER BROWN



COLOR SHOWN :
DRST2/CHOCOLATE CARAMEL (LEFT),
DR4/GOLDEN HONEY BLONDE (RIGHT)



ELYA 24"



SPECIAL COLORS



DR RED VELVET, DR2/CINNAMON SPICE, DR4/GOLDEN HONEY BLONDE, DR4/SANDY BLONDE, DR4/BL GOLDEN HONEY, DRFF CHOCOLATE TRUFFLE, DRFF GOLDEN AMBER, DRFF HAZELNUT, DRFF RED VELVET, DRFF2/GINGER BROWN, DRST2/CHOCOLATE CARAMEL



Lace front

LACE FRONT WIG

You can't get a better look than Kaya's hip-length, soft waves in gorgeous, easy-to-wear colors.

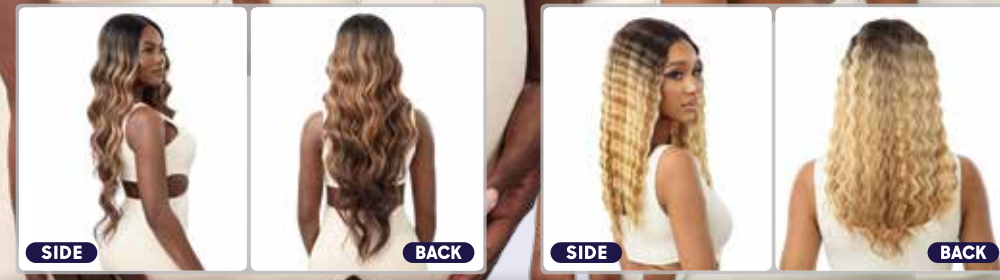
Try the trendy crimped style from the trusted Lacefront brand! Talula waves come in a variety of colors fit for fall from DRFF Dutch Cocoa to DRFF Honey Chestnut.

- HD Transparent Lace
- Pre-Plucked Hairline
- Breathable, Comfortable Cap
- Natural Baby Hairs
- Heat Resistant Fiber



COLOR SHOWN :
DR MOCHA BRONDE BALAYAGE (TOP)
DR GINGER COPPER BALAYAGE (BOTTOM)

COLOR SHOWN :
DR HAZELNUT BLONDE (TOP)
DR GINGER COPPER BALAYAGE (BOTTOM)



KAYA 32"

TALULA 20"

AVAILABLE COLORS :

KAYA & TALULA : 1, 1B, 2, 613, DR CHERRY RED, DR GINGER COPPER BALAYAGE, DR HAZELNUT BLONDE, DR MOCHA BRONDE BALAYAGE, DRFF DUTCH COCOA, DRFF HONEY CHESTNUT

SPECIAL COLORS



Lace front

EveryWear

LACE FRONT WIG

Every23 is for the woman who wants to go from a busy workday to a spontaneous night out. Go anywhere with EveryWear!

- Ear-to-Ear HD Lace
- Easy, Goes-with-Everything Styles
- High Heat Resistant Fiber



COLOR SHOWN :
DR CHOCOLATE CREAM (LEFT)
DRFF GOLDEN AMBER (RIGHT)



EVERY23 14"

SPECIAL COLORS



AVAILABLE COLORS :

1, 1B, 2, 613, DR CHOCOLATE CREAM, DR CHOCOLATE SWIRL, DR4/GOLDEN HONEY BLONDE, DR4/SANDY BLONDE, DRFF GOLDEN AMBER, DRFF RED VELVET, DRFF2/GINGER BROWN



Fool everyone with Floris! This natural-looking, lace part unit featuring bangs and subtle curls!

The Daily Wig's Dazzlin makes the wet-curlly style quick n' easy.

If your customer wants easy waves, they need the new Waverly wig!

A layered bob and pop-on-and-go unit come together with Sterling. Women low on time will love this office-friendly style and easy-to-wear construction.

- Premium Synthetic Fibers
- Pre-Plucked & Hand-Tied Lace Part
- Breathable Mesh Cap
- Heat-Styling Friendly



FLORIS 22"

DAZZLIN 12"

WAVERLY 24"

STERLING 14"

AVAILABLE COLORS :

FLORIS : 1, 1B, 2, 613, HAVANA BROWN, UC BRUNETTE HONEY MELT, DR COPPER ORANGE, DR CAMEL, DR4/GOLDEN HONEY BLONDE, DR RED VELVET

DAZZLIN : 1, 1B, 2, 613, 99J, CHOCOLATE SWIRL, DR COPPER ORANGE, DR2/GINGER BROWN, DRFF GOLDEN AMBER, DRFF RED VELVET

WAVERLY : 1, 1B, 2, 613, DR CHOCOLATE SWIRL, DR4/TIRAMISU, DRST2/CHOCOLATE CAMEL, DRFF2/GINGER BROWN, DRFF GOLDEN AMBER, DRFF RED VELVET

STERLING : 1, 1B, 2, 613, DR COPPER ORANGE, DR CHOCOLATE SWIRL, DR4/SANDY BLONDE, DRST2/CHOCOLATE CAMEL, DRFF2/GINGER BROWN, DRFF GOLDEN AMBER, DRFF RED VELVET

SPECIAL COLORS



wigpop®

SYNTHETIC FULL WIG

Brynlee brings bangs, color and length to the Wigpop lineup.

- Great Value
- Ready to Wear & Go
- Range of Trendy Colors & Styles
- Heat-Styling Friendly



COLOR SHOWN: DR GINGER COPPER BALAYAGE



converti-cap®

PREMIUM SYNTHETIC FIBERS



Kissed by Mist offers a million ways to wear curls this fall.

- Limitless styling possibilities
- Reveal your own hairline for a realistic look
- Breathable And Flexible Cap That Lays Flat
- Adjustable Drawstring For A Custom Fit
- Premium Synthetic Fibers



COLOR SHOWN: DR GINGER BROWN (TOP), 1B, DR GINGER BROWN (BOTTOM LEFT & RIGHT)



BRYNLEE 24"

KISSED BY MIST 26"

AVAILABLE COLORS :

- BRYNLEE :** 1, 1B, 2, 613,
DR CHERRY RED,
DR CHOCOLATE SWIRL,
DR GINGER COPPER BALAYAGE,
DR HAZELNUT BLONDE,
DR HAZELNUT BROWN,
DR2/BL SANDY BLONDE

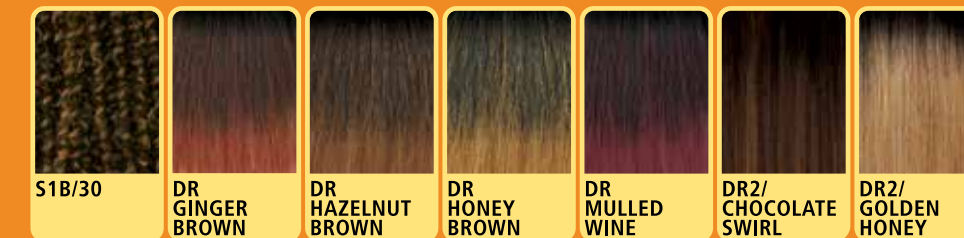
SPECIAL COLORS



AVAILABLE COLORS :

- KISSED BY MIST :** 1, 1B, 2,
S1B/30, DR GINGER BROWN,
DR HAZELNUT BROWN,
DR HONEY BROWN,
DR MULLED WINE,
DR2/CHOCOLATE SWIRL,
DR2/GOLDEN HONEY

SPECIAL COLORS



Outre[®]
100% HUMAN HAIR BLEND

Outre[®]
100% HUMAN HAIR BLEND

360 | **13"x4"**
FRONTAL LACE WIG | HAND-TIED LACE FRONTAL

360 | **13"x6"**
FRONTAL LACE WIG | HAND-TIED LACE FRONTAL

13"x4" HAND-TIED LACE FRONTAL for styling versatility



360 HAND-TIED LACE EDGES for a natural look

13"x6" HAND-TIED LACE FRONTAL for styling versatility



360 HAND-TIED LACE EDGES for a natural look



If you're looking for a wig that feels custom made, then this wig was made to be yours. Outre 360 Frontal Lace Wig hairline isn't straight, instead it follows the natural curvy shape of your own. And this lace will fully conceal all of your hair with its complete temple and sideburn-to-sideburn coverage. Try the wig that was created to fit you flawlessly.



- PREMIUM HUMAN HAIR BLEND
- 360 ALL AROUND HAND-TIED LACE EDGES
- 13" X 4" HD LACE FRONTAL
- 13" X 6" HD LACE FRONTAL
- PRE-PLUCKED HAIRLINE WITH A NATURAL SHAPE
- FULL TEMPLE COVERAGE & SIDEBURN-TO-SIDEBURN HAND-TIED LACE
- PRE-ATTACHED ELASTIC BAND FOR A FLAT FIT



COLOR SHOWN : HAVANA BROWN



COLOR SHOWN : DRST2/CHOCOLATE CARAMEL

NORVINA 13X4 16"

ANDREINA 13X6 24"

AVAILABLE COLORS

1, 1B, 2, 613, CHOCOLATE SWIRL, CINNAMON WINE, HAVANA BROWN, DR4/GOLDEN HONEY BLONDE, DRST2/CHOCOLATE CARAMEL, DRFF GOLDEN AMBER, DRFF2/GINGER BROWN

AVAILABLE COLORS

1, 1B, 2, HAVANA BROWN, DR4/GOLDEN HONEY BLONDE, DRST MAPLE BROWN, DRST2/CHOCOLATE CARAMEL, DRFF RED VELVET, DRFF2/GINGER BROWN, DRFF4/BUTTERED TOAST



KALINDA 13X6 24"

KAYREENA 13X6 28"

ROSHAN 13X6 24"

SUNNIVA 13X6 28"



MARISA 13X6 24"

MAXIMINA 13X6 22"

TASIRA 13X6 24"

VELORA 13X6 22"

AVAILABLE COLORS

KALINDA : 1, 1B, 2, 613, DR GINGER BROWN, DR RED VELVET, DR2/CHOCOLATE SWIRL, DR2/HONEY BROWN, DR4/GOLDEN HONEY BLONDE

KAYREENA : 1, 1B, 2, CHOCOLATE SWIRL, HAVANA BROWN, DR2/CINNAMON WINE, DR2/GINGER BROWN, DR4/GOLDEN AMBER, DR4/GOLDEN HONEY BLONDE, DRST2/CHOCOLATE CARAMEL

MARISA : 1, 1B, 2, CHOCOLATE SWIRL, HAVANA BROWN, DR RED VELVET, DR4/GOLDEN HONEY BLONDE, DRFF GOLDEN AMBER, DRFF2/GINGER BROWN, DRFF2/VANILLA CHOCOLATE

MAXIMINA : 1, 1B, 2, 613, HAVANA BROWN, DR4/GOLDEN HONEY BLONDE, DRST MAPLE BROWN, DRST2/CHOCOLATE CARAMEL, DRFF RED VELVET, DRFF GOLDEN AMBER, DRFF2/GINGER BROWN

AVAILABLE COLORS

ROSHAN : 1, 1B, 2, 613, DR GINGER BROWN, DR RED VELVET, DR2/CHOCOLATE SWIRL, DR2/HONEY BROWN, DR4/GOLDEN HONEY BLONDE

SUNNIVA : 1, 1B, 2, 613, DR GINGER BROWN, DR RED VELVET, DR2/CHOCOLATE SWIRL, DR2/HONEY BROWN, DR4/GOLDEN HONEY BLONDE

TASIRA : 1, 1B, 2, 613, DR GINGER BROWN, DR RED VELVET, DR2/CHOCOLATE SWIRL, DR2/HONEY BROWN, DR4/GOLDEN HONEY BLONDE

VELORA : 1, 1B, 2, 613, DR GINGER BROWN, DR RED VELVET, DR2/CHOCOLATE SWIRL, DR2/HONEY BROWN, DR4/GOLDEN HONEY BLONDE



PERFECT HAIRLINE™

LIFE ISN'T PERFECT, BUT YOUR HAIR CAN BE.

- Fully hand-tied 13" x 6", 13" x 5", 13" x 4" frontal
- Ear-to-ear soft HD Transparent Lace
- Natural baby hairs
- Comes with pre-attached elastic band
- Pre-plucked hairline
- Heat-styling friendly



COLOR SHOWN : DR4/GOLDEN HONEY BLONDE

LUXY 13X4

AVAILABLE COLORS

1, 1B, 2, 613, RED VELVET, DR4/GOLDEN HONEY BLONDE, DRB GOLDEN GINGER, 3DRB COFFEE CREAM



COLOR SHOWN : DRFF RED VELVET

DECLAN 13X5 28"

AVAILABLE COLORS

1, 1B, 2, 613, DR GINGER BROWN, DR2/CHOCOLATE SWIRL, DR2/GOLDEN AMBER, DR4/GOLDEN HONEY BLONDE, DR4/HONEY BROWN, DRFF RED VELVET



COLOR SHOWN : CHOCOLATE SWIRL

FABIENNE 13X6 18"

AVAILABLE COLORS

1, 1B, 2, 613, CHOCOLATE SWIRL, DRST2/CHOCOLATE CARAMEL, DR4/SANDY BLONDE, DR4/GOLDEN HONEY BLONDE, DRFF GOLDEN AMBER, DRFF RED VELVET, DRFF2/GINGER BROWN



COLOR SHOWN : DRB GOLDEN GINGER (LEFT),
3DRB COFFEE CREAM (RIGHT)

BLAZE 13X4



COLOR SHOWN : DRST2/CHOCOLATE CARAMEL (LEFT),
3DRFF CAJUN SPICE (RIGHT)

GELORA 13X4 18"



COLOR SHOWN : DR2/CREAMY TOFFEE (LEFT),
3DRFF CAJUN SPICE (RIGHT)

LINETTE 13X4 18"



COLOR SHOWN : 613 (LEFT & RIGHT)

TIANNA 13X4 16"



COLOR SHOWN : DR CHERRY CRUSH (LEFT),
DR JAVA FROST (RIGHT)

LISSIE 13X4 12"



COLOR SHOWN : DR4/MALIBU BLONDE (LEFT), 1B (RIGHT)

JENISSE 13X4 12"



COLOR SHOWN : DR4/BROWN SUGAR MELT (LEFT & RIGHT)

DORELIA 13X5 22"



COLOR SHOWN : DR GINGER BROWN (LEFT),
DR4/BROWN SUGAR MELT (RIGHT)

KLAIR 13X5 24"

AVAILABLE COLORS

BLAZE : 1, 1B, 2, 613, RED VELVET, DR4/GOLDEN HONEY BLONDE, DRB GOLDEN GINGER, 3DRB COFFEE CREAM

GELORA : 1, 1B, 2, 613, DRST2/CHOCOLATE CARAMEL, DR4/TIRAMISU, DRFF GOLDEN AMBER, DRFF RED VELVET, DRFF2/GINGER BROWN, 3DRFF CAJUN SPICE

LISSIE : 1, 1B, 2, 613, DR CHERRY CRUSH, DR CHOCOLATE SWIRL, DR JAVA FROST, DR4/GOLDEN HONEY BLONDE, 3DRFF CAJUN SPICE

JENISSE : 1, 1B, 2, DR CHOCOLATE CREAM, DR2/CINNAMON WINE, DR2/GINGER BROWN, DR4/CREAMY MOCHA, DR4/GOLDEN AMBER, DR4/MALIBU BLONDE

AVAILABLE COLORS

LINETTE : 1, 1B, 2, 613, CHOCOLATE SWIRL, DR ALMOND SPICE, DR2/BUTTERED PECAN, DR2/CINNAMON WINE, DR2/CREAMY TOFFEE, DR6/CHAMPAGNE FIZZ, 3DRFF CAJUN SPICE

TIANNA : 1, 1B, 613, DR2/CINNAMON WINE, DR4/GOLDEN AMBER, DR4/TIRAMISU

DORELIA : 1, 1B, 2, 613, DR GINGER BROWN, DR PAPRIKA SPICE, DR2/CHOCOLATE SWIRL, DR4/BROWN SUGAR MELT, DR4/GOLDEN HONEY BLONDE, DRFF RED VELVET

KLAIR : 1, 1B, 2, 613, DR GINGER BROWN, DR PAPRIKA SPICE, DR2/CHOCOLATE SWIRL, DR4/BROWN SUGAR MELT, DR4/GOLDEN HONEY BLONDE, DRFF RED VELVET



COLOR SHOWN : DR2/CINNAMON WINE (LEFT), DRFF GINGER MAHOGANY (RIGHT)

ANNALISE 13X6 26"



COLOR SHOWN : STRAWBERRY GOLD (LEFT & RIGHT)

ARIELLA 13X6 28"



COLOR SHOWN : 1 (LEFT), HAVANA BROWN (RIGHT)

DOMINICA 13X6 22"



COLOR SHOWN : DRFF4/BUTTERED TOAST (LEFT), DRFF RED VELVET (RIGHT)

ETIENNE 13X6 26"



COLOR SHOWN : DRFF2/GINGER BROWN (LEFT), 27 (RIGHT)

BEXLEY 13X6 28"



COLOR SHOWN : DR4/SANDY BLONDE (LEFT), DRFF CAJUN SPICE (RIGHT)

CHARISMA 13X6 26"



COLOR SHOWN : DR2/BUTTERED PECAN (LEFT), DRFF2/GINGER BROWN (RIGHT)

EVERETTE 13X6 26"



COLOR SHOWN : DRFF GOLDEN AMBER (LEFT), CREAM SODA (RIGHT)

EVONA 13X6 22"

AVAILABLE COLORS

ANNALISE : 1, 1B, 2, 613, DR CHOCOLATE SWIRL, DR2/CINNAMON WINE, DR2/GOLDEN AMBER, DR4/SANDY BLONDE, DRFF CAJUN SPICE, DRFF GINGER MAHOGANY

ARIELLA : 1, 1B, 2, 613, STRAWBERRY GOLD, 2T/30, DR2/CHOCOLATE SWIRL, DR4/T27613, DRFF2/CINNAMON MOCHA

BEXLEY : 1, 1B, 2, 27, 613, CHOCOLATE SWIRL, CINNAMON WINE, DR RED VELVET, DR4/GOLDEN HONEY BLONDE, DRFF GOLDEN AMBER, DRFF2/GINGER BROWN, DRFF4/BUTTERED TOAST

CHARISMA : 1, 1B, 2, 613, DR CHOCOLATE SWIRL, DR2/CINNAMON WINE, DR2/GOLDEN AMBER, DR4/SANDY BLONDE, DRFF CAJUN SPICE, DRFF GINGER MAHOGANY

AVAILABLE COLORS

DOMINICA : 1, 1B, 2, CREAM SODA, HAVANA BROWN, DR CHOCOLATE CREAM, DR2/CINNAMON WINE, DR2/GOLDEN AMBER, DRFF CAJUN SPICE, DRFF GINGER MAHOGANY

ETIENNE : 1, 1B, 2, 613, DR CHOCOLATE SWIRL, DR2/2/CHOCOLATE CARAMEL, DR4/SANDY BLONDE, DRFF GOLDEN AMBER, DRFF RED VELVET, DRFF2/GINGER BROWN, DRFF4/BUTTERED TOAST

EVERETTE : 1, 1B, 2, 613, DR CHOCOLATE SWIRL, DR2/BUTTERED PECAN, DR4/SANDY BLONDE, DR4/GOLDEN HONEY BLONDE, DRFF RED VELVET, DRFF2/GINGER BROWN, DRFF4/BUTTERED TOAST

EVONA : 1, 1B, 2, 613, CREAM SODA, HAVANA BROWN, DR CHOCOLATE CREAM, DR2/CINNAMON WINE, DRFF CAJUN SPICE, DRFF GINGER MAHOGANY, DRFF GOLDEN AMBER



COLOR SHOWN : DRFF6/HONEY OVER CHOCOLATE (LEFT), 3DRFF CAJUN SPICE (RIGHT)

FREYA 13X6 22"



COLOR SHOWN : DR4/T27613 (LEFT), DR4/PEARL BLONDE (RIGHT)

GENEVA 13X6 24"



COLOR SHOWN : DR JAVA FROST (LEFT), DR2/GOLDEN AMBER (RIGHT)

MAILYN 13X6 18"



COLOR SHOWN : DRFF2/GINGER BROWN (LEFT), DR2/CREAMY TOFFEE (RIGHT)

PROMISE 13X6 26"



COLOR SHOWN : DR2/CHOCOLATE SWIRL (LEFT & RIGHT)

JULIANNE 13X6 20"



COLOR SHOWN : DR4/HONEY BLONDE (LEFT), 2 (RIGHT)

JULIANNE 24" 13X6



COLOR SHOWN : 1B (LEFT & RIGHT)

SHADAY 32" 13X6



COLOR SHOWN : DRF4/VANILLA CARAMEL (LEFT), DRF GINGER BROWN (RIGHT)

TATIENNE 13X6 26"

AVAILABLE COLORS

FREYA : 1, 1B, 2, 613, DR4/GOLDEN HONEY BLONDE, DRST MAPLE BROWN, DRFF GOLDEN AMBER, DRFF RED VELVET, DRFF6/HONEY OVER CHOCOLATE, 3DRFF CAJUN SPICE

GENEVA : 1, 1B, 2, 613, DR4/T27613, DR4/PEARL BLONDE, DR2/CHOCOLATE SWIRL, DRFF2/CHERRY RED, DRFF4/HAZELNUT HONEY, DRFF4/STRAWBERRY GOLD

JULIANNE : 1, 1B, 2, 613, DR2/CHOCOLATE SWIRL, DR4/GOLDEN HONEY BLONDE, DR4/HONEY BROWN, DR GINGER BROWN, DRFF RED VELVET

JULIANNE 24" : 1, 1B, 2, 613, DR GINGER BROWN, DR2/CHOCOLATE SWIRL, DR4/GOLDEN HONEY BLONDE, DR4/HONEY BROWN, DRFF RED VELVET

AVAILABLE COLORS

MAILYN : 1, 1B, 2, 613, DR JAVA FROST, DR2/CINNAMON WINE, DR2/CREAMY TOFFEE, DR2/GOLDEN AMBER, DR4/SANDY BLONDE, 3DRFF CAJUN SPICE

PROMISE : 1, 1B, 2, 613, DR JAVA FROST, DR2/CREAMY TOFFEE, DR4/SANDY BLONDE, DRFF GOLDEN AMBER, DRFF RED VELVET, DRFF2/GINGER BROWN, 3DRFF CAJUN SPICE

SHADAY 32" : 1, 1B, 2, 613, DR4/ASH BLONDE, DR4/TIRAMISU, DR MARBLE GRAY, DRFF GOLDEN AMBER, DRFF RED VELVET

TATIENNE : 1, 1B, 2, 613, DR COPPER ORANGE, DR4/SANDY BLONDE, DRF CHERRY WINE, DRF GINGER BROWN, DRFF2/HAZELNUT BROWN, DRF4/VANILLA CARAMEL



COLOR SHOWN : S1B/30 (LFET & RIGHT)

YVETTE 13X6 26"



COLOR SHOWN : DR CHOCOLATE CREAM (LEFT), DR6/CHAMPAGNE FIZZ (RIGHT)

DANNITA 13X4 14"



COLOR SHOWN : DRFF GINGER MAHOAGANY (LEFT), 1B (RIGHT)

CHEYENNE 13X6 28"



COLOR SHOWN : DR6/CHAMPAGNE FIZZ (LEFT), 1B (RIGHT)

JAYLANI 13X6 26"



COLOR SHOWN : DR2/AUTUMN BROWN (LEFT), DR4/CREAMY MOCHA (RIGHT)

ELLA 13X4 18"



COLOR SHOWN : DR2/GINGER BROWN (LEFT), CREAM SODA (RIGHT)

PATRICE 13X4 12"



COLOR SHOWN : HAVANA BROWN (LEFT), DRFF CAJUN SPICE (RIGHT)

KATYA 13X6 28"



COLOR SHOWN : DRFF CAJUN SPICE (LEFT), DR6/CHAMPAGNE FIZZ (RIGHT)

LAUREL 13X6 26"

AVAILABLE COLORS

YVETTE : 1, 1B, 2, 613, S1B/30, DR27613, DR4/GINGER BROWN, DR4/HONEY BROWN, DR2/CHOCOLATE SWIRL, DRFF RED VELVET

ELLA : 1, 1B, 2, CREAM SODA, DR CHOCOLATE SWIRL, DR RED VELVET, DR2/AUTUMN BROWN, DR4/CREAMY MOCHA, DRFF GOLDEN AMBER, DRFF CAJUN SPICE

DANNITA : 1, 1B, 2, DR CHOCOLATE CREAM, DR2/GINGER BROWN, DR6/CHAMPAGNE FIZZ, DRFF GOLDEN AMBER, DRFF RED VELVET

PATRICE : 1, 1B, 2, CREAM SODA, DR CHOCOLATE SWIRL, DR RED VELVET, DR2/GINGER BROWN, DR4/CREAMY MOCHA, DRFF CAJUN SPICE, DRFF GOLDEN AMBER

AVAILABLE COLORS

CHEYENNE : 1, 1B, 2, 613, CREAM SODA, HAVANA BROWN, DR CHOCOLATE CREAM, DR2/CINNAMON WINE, DRFF CAJUN SPICE, DRFF GINGER MAHOAGANY, DRFF GOLDEN AMBER

JAYLANI : 1, 1B, 2, 613, CINNAMON WINE, DR CHOCOLATE CREAM, DR2/GINGER BROWN, DR4/CREAMY MOCHA, DR6/CHAMPAGNE FIZZ, DRFF GOLDEN AMBER, DRFF CAJUN SPICE

KATYA : 1, 1B, 2, 613, HAVANA BROWN, DR CHOCOLATE CREAM, DR2/GINGER BROWN, DR4/CREAMY MOCHA, DR6/CHAMPAGNE FIZZ, DRFF GOLDEN AMBER, DRFF RED VELVET, DRFF CAJUN SPICE

LAUREL : 1, 1B, 2, 613, DR CHOCOLATE CREAM, DR2/GINGER BROWN, DR4/CREAMY MOCHA, DR6/CHAMPAGNE FIZZ, DRFF GOLDEN AMBER, DRFF RED VELVET, DRFF CAJUN SPICE

Outre®

LACE FRONT DELUXE

PREMIUM SYNTHETIC FIBER

The new Outre® Lacefront Deluxe features deeper lace edges for an upgraded hairline, and more hand-tied lace at the part. The additional lace creates a flatter finish where it matters most, and the ear-to-ear HD lace will melt beautifully onto your skin. Experience the benefits of extra lace with Lacefront Deluxe.

- Ear-to-Ear HD Transparent Lace
- Deeper Pre-Plucked, Hand-Tied Lace Edges
- 5" Deep Parting
- Natural Baby Hairs
- Heat Resistant



STYLE & COLOR SHOWN :
AVALON : DRFF CHOCOLATE TRUFFLE (TOP) | DR2/CINNAMON SPICE (BOTTOM)

AVALON 26"

AVAILABLE COLORS

1, 1B, 2, 613, DR RED VELVET, DR2/CINNAMON SPICE, DR4/BL GOLDEN HONEY, DR4/SANDY BLONDE, DRFF CHOCOLATE TRUFFLE, DRFF HAZELNUT



STYLE & COLOR SHOWN :
COLLINA : DRFF CHOCOLATE TRUFFLE (TOP) | DRFF CARAMEL MOCHA (BOTTOM)

COLLINA 12"

AVAILABLE COLORS

1, 1B, 2, 613, DR RED VELVET, DR2/CINNAMON SPICE, DR4/BL GOLDEN HONEY, DRFF CARAMEL MOCHA, DRFF CHOCOLATE TRUFFLE, DRFF HAZELNUT



STYLE & COLOR SHOWN :
ELYA : DRST2/CHOCOLATE CARAMEL (TOP) | DR4/GOLDEN HONEY BLONDE (BOTTOM)

ELYA 24"

AVAILABLE COLORS

1, 1B, 2, 613, DR4/GOLDEN HONEY BLONDE, DRST2/CHOCOLATE CARAMEL, DRFF GOLDEN AMBER, DRFF RED VELVET, DRFF2/GINGER BROWN



STYLE & COLOR SHOWN :
NORIA : DR2/CREAMY TOFFEE (TOP) | DRFF2/GINGER BROWN (BOTTOM)

NORIA 12"

AVAILABLE COLORS

1, 1B, 2, 613, DRST MAPLE BROWN, DR2/CINNAMON WINE, DR2/CREAMY TOFFEE, DR4/SANDY BLONDE, DRFF GOLDEN AMBER, DRFF2/GINGER BROWN



STYLE & COLOR SHOWN :
SILVANA : DRFF GINGER COCO BROWN (TOP) | DRP PASSION ROSE (BOTTOM)

SILVANA 12"

AVAILABLE COLORS

1, 1B, 2, 613, CHOCOLATE SWIRL, DR2/GOLDEN HONEY BLONDE, DRFF GINGER COCO BROWN, DRFF HONEY BROWN, DRFF2/CINNAMON SPICE, DRP PASSION ROSE

PRE-BRAIDED PRE-STYLED

Outre®

13" x 4" LACE FRONTAL WIG

13" x 2" LACE FRONTAL WIG

Outre®

4" x 4" LACE FRONT WIG



COLOR SHOWN : 1B

FULANI MICRO CORNBOW BRAIDS 28"

AVAILABLE COLORS
1, 1B, 2, DR BURGUNDY, DR1B/2T3027, DR4/2T27613



COLOR SHOWN : 1B

HALO STITCH BRAID 14"

AVAILABLE COLORS
1, 1B, DRAGON FRUIT, DR CHAI LATTE, DR2/CHOCOLATE SWIRL, DR2/GINGER BROWN, DR2/GOLDEN AMBER, DR4/GOLDEN HONEY BLONDE



COLOR SHOWN : 1B

MIDDLE PART FEED-IN BOX BRAIDS 36"

AVAILABLE COLORS
1, B, 2, DR BURGUNDY, DR1B/2T3027, DR4/2T27613



Outre®
13"x2" LACE FRONTAL WIG

HD
TRANSPARENT LACE

PRE-STYLED
WITH BRAIDED HEADBAND INCLUDED

13"x2" LACE FRONTAL
EAR-TO-EAR LACE

COLOR SHOWN : 1B (TOP), DR2/CHOCOLATE SWIRL (BOTTOM)

HALO STITCH BRAID 26"

AVAILABLE COLORS
1, 1B, DRAGON FRUIT, DR CHAI LATTE, DR2/CHOCOLATE SWIRL, DR2/GINGER BROWN, DR2/GOLDEN AMBER, DR4/GOLDEN HONEY BLONDE



Outre®
4"x4" LACE FRONT WIG

HD
TRANSPARENT LACE

PRE-BRAIDED
BOX BRAID BOB

4"x4" EAR-TO-EAR LACE
HAND-TIED HD LACE

COLOR SHOWN : 1B (TOP), DR1B/2T425 (BOTTOM)

BOX BRAID BOB 12"

AVAILABLE COLORS
1, 1B, 2, DR1B/2T425, DR1B/2T3027, DR4/2T27613



Outre®
13"x4" LACE FRONTAL WIG

13"x4" LACE FRONTAL
HAND-TIED HD LACE

HD
TRANSPARENT LACE

PRE-BRAIDED
KNOTLESS BOX BRAIDS

COLOR SHOWN : DR4/2T27613 (LEFT & RIGHT)

KNOTLESS SQUARE PART BRAIDS 32"



Outre®
13"x4" LACE FRONTAL WIG

13"x4" LACE FRONTAL
HAND-TIED HD LACE

HD
TRANSPARENT LACE

PRE-BRAIDED
KNOTLESS BOX BRAIDS

COLOR SHOWN : DR1B/2T3027 (LEFT & RIGHT)

KNOTLESS TRIANGLE PART BRAIDS 30"

AVAILABLE COLORS
KNOTLESS SQUARE PART BRAIDS : 1, 1B, 2, 2T/3027, DR BURGUNDY, DR1B/2T3027, DR4/2T27613
KNOTLESS SQUARE PART BRAIDS 26" : 1, 1B, 2T/3027, DR BURGUNDY, DR1B/2T3027, DR4/2T27613



Outre®
13"x4" LACE FRONTAL WIG

13"x4" LACE FRONTAL
HAND-TIED HD LACE

HD
TRANSPARENT LACE

PRE-BRAIDED
KNOTLESS BOX BRAIDS

COLOR SHOWN : 1B (LEFT), 2T/3027 (RIGHT)

KNOTLESS SQUARE PART BRAIDS 26"



Outre®
13"x4" LACE FRONTAL WIG

13"x4" LACE FRONTAL
HAND-TIED HD LACE

HD
TRANSPARENT LACE

PRE-BRAIDED
KNOTLESS BOX BRAIDS

COLOR SHOWN : 1B (LEFT), DR BURGUNDY (RIGHT)

KNOTLESS TRIANGLE PART BRAIDS 26"

AVAILABLE COLORS
KNOTLESS TRIANGLE PART BRAIDS : 1, 1B, 2, 2T/3027, DR BURGUNDY, DR1B/2T3027, DR4/2T27613
KNOTLESS TRIANGLE PART BRAIDS 26" : 1, 1B, 2T/3027, DR BURGUNDY, DR1B/2T3027, DR4/2T27613

X-Pression
Twisted Up[®]
 100% PREMIUM SYNTHETIC FIBER

LACE FRONT BRAID WIG

Skip the trip to the braiding salon and try the new X-Pression Twisted Up[®] wig in beautiful braids and trendy twists. Middle part or side part, top knots or half up half down – pick how you part it and style it with the 4x4 hand-tied lace front feature. Baby hair and pre-plucked ear-to-ear lace gives you a natural look that might even fool the best hair braiders. It's never been easier or quicker to wear your favorite look!

KEY FEATURES

- 100% Premium Synthetic Fiber
- Pre-Plucked Ear-to-Ear Lace
- 4x4 Hand-Tied Lace Front
- Natural Baby Hair



COLOR SHOWN : 1B

BUTTERFLY BOMB TWIST 14"

AVAILABLE COLORS

1, 1B, 2, 2T1B/30, DR BURGUNDY, DR1B/2T3027, DR4/2T27613



COLOR SHOWN : 1B

BUTTERFLY BOMB TWIST 24"

AVAILABLE COLORS

1, 1B, 2, 2T1B/30, DR BURGUNDY, DR1B/2T3027, DR4/2T27613



COLOR SHOWN : 1

BUTTERFLY LOCS 22"

AVAILABLE COLORS

1, 1B, 2, 613, 2T1B/30, 2T4/27, 2T99J/350



BUTTERFLY PASSION TWIST 26"



STRAIGHT BOMB TWIST 14"



PASSION TWIST 28"



BOHO PASSION WATERWAVE 22"



WAVY BOMB TWIST 18"



ISLAND SUMMER LOCS 24"



KINKY BOHO PASSION WATERWAVE 18"



BOHO PASSION SUMMER TWIST 12"

*NOT 4X4 HAND-TIED LACE FRONT

AVAILABLE COLORS

BUTTERFLY PASSION TWIST 26" : 1, 1B, 2, 2T1B/30, DR BURGUNDY, DR1B/2T3027, DR4/2T27613
STRAIGHT BOMB TWIST 14" : 1, 1B, 613, M1B/30, M1B/425

WAVY BOMB TWIST 18" : 1, 1B, 613, M1B/30, M1B/425
ISLAND SUMMER LOCS 24" : 1, 1B, 2, 613, DRAGON FRUIT, 2T1B/30, 2T4/2730

AVAILABLE COLORS

PASSION TWIST 28" : 1, 1B, 613
BOHO PASSION WATERWAVE 22" : 1, 1B, 613, DRAGON FRUIT, MACCHIATO

KINKY BOHO PASSION WATERWAVE 18" : 1, 1B, 613, DRAGON FRUIT, MACCHIATO
BOHO PASSION SUMMER TWIST 12" : 1, 1B, 2, DRAGON FRUIT, 2T1B/30



X-Pression®

Twisted Up®

100% KANEKALON FIBER

SPRINGY BOHEMIAN TWIST

LOC IT. LOOP IT.
TWIST IT. LOVE IT!

MEET THE NEW CURL
FROM TWISTED UP



STYLE & COLOR SHOWN : SPRINGY BOHEMIAN TWIST 30" | DRAGON FRUIT

Outre® BEAUTIFUL HAIR FOR ALL

800.874.8804 OUTRE.COM
Copyright © 2022 Sun Taiyang Co., Ltd. All rights reserved.

